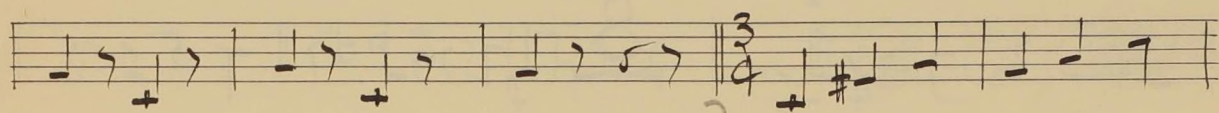
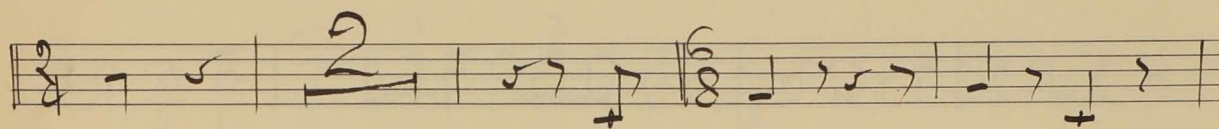
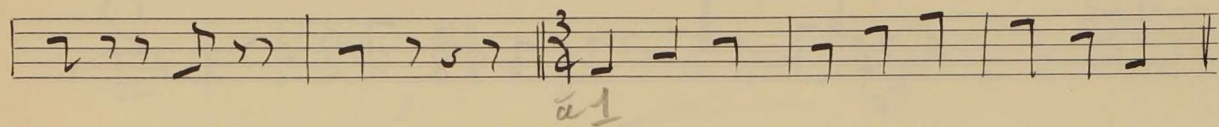
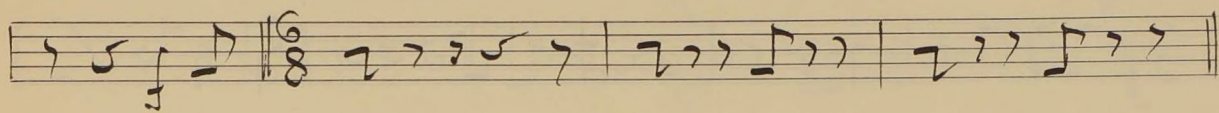
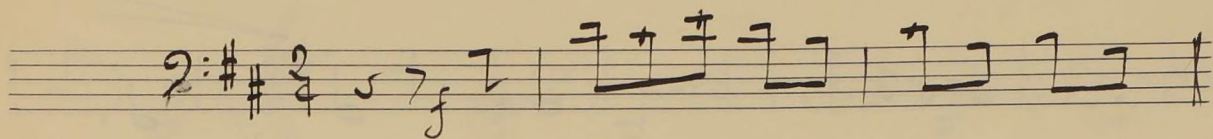


EL BATEO

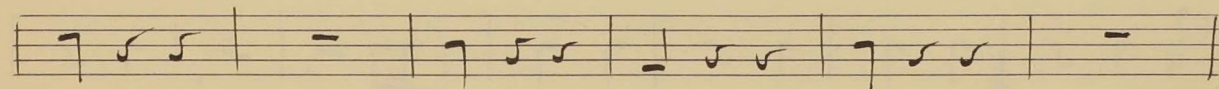
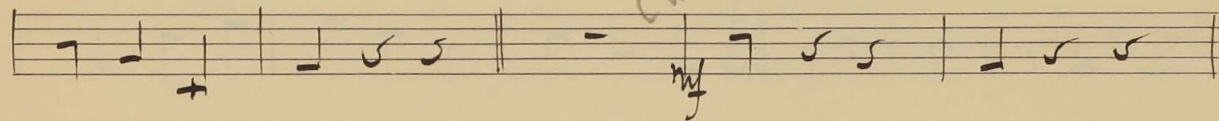
J. Chueca

Preludio

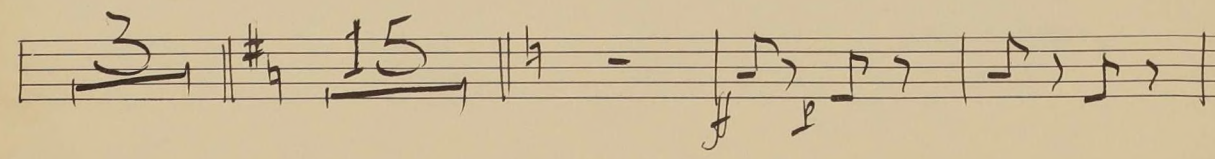
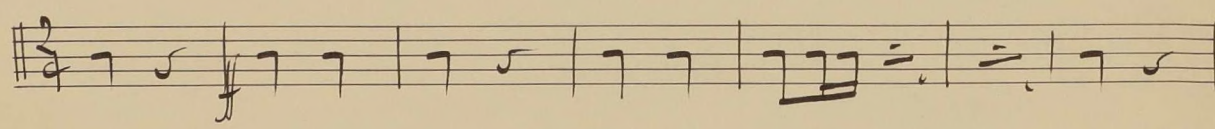
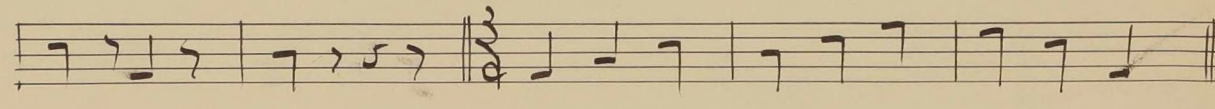
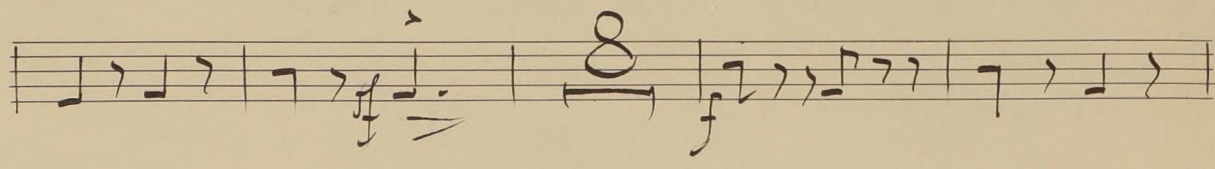
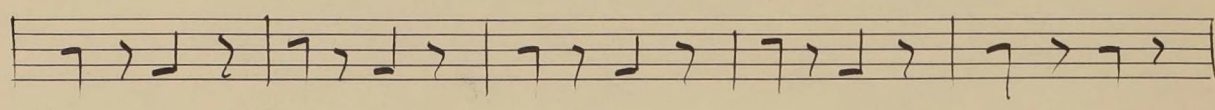
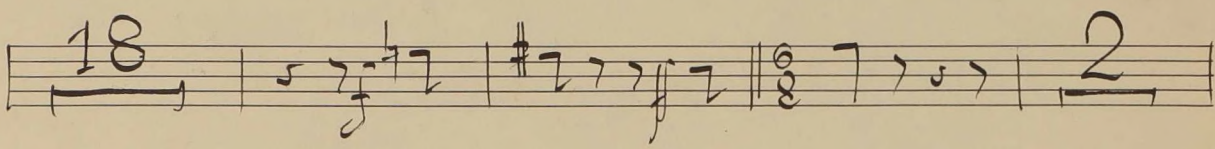
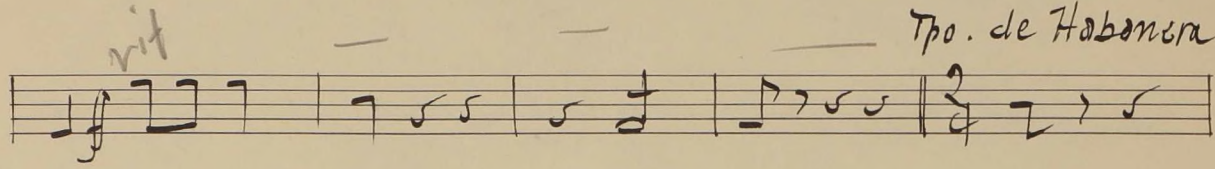
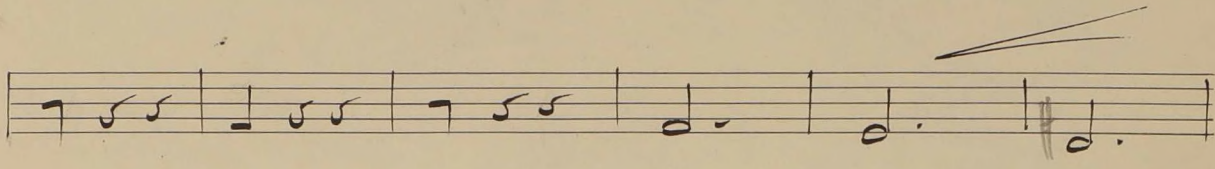
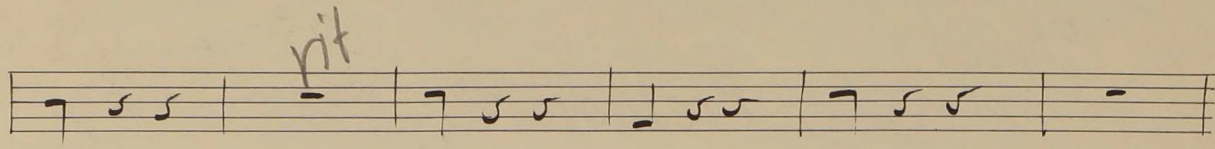
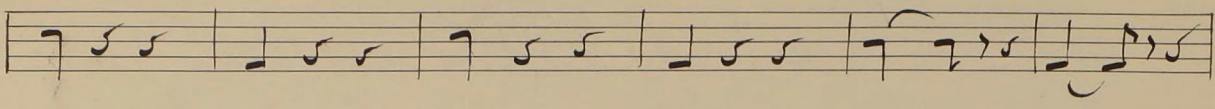
Trombón 3º



Tpo. de Valz



##



Handwritten musical notation on a single staff. It begins with a treble clef and a key signature of one sharp (F#). The notation includes several measures with notes and rests. A dynamic marking of *p* (piano) is present, along with the word *cresc.* (crescendo).

Handwritten musical notation on a single staff, continuing the piece with notes and rests.

Handwritten musical notation on a single staff, featuring a double bar line with repeat dots and a key signature change to two sharps (F# and C#).

Handwritten musical notation on a single staff, including a double bar line with repeat dots.

Handwritten musical notation on a single staff, showing dynamic markings of *p* and *f* (forte).

Handwritten musical notation on a single staff, featuring triplet markings (indicated by the number 3) over groups of notes.

Handwritten musical notation on a single staff, concluding with a double bar line and a final note.

Four empty musical staves.

Four empty musical staves.

Four empty musical staves.