

xrite

colorchecker CLASSIC

C 236-28

JEWELRY BRAZALERAS LA ALBERCA, SALAMANCA

FROM PHOTOGRAPHS
IN THE COLLECTION OF
THE HISPANIC SOCIETY
OF AMERICA

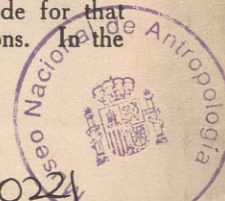


P(12611)

In addition to the necklaces of the wedding costume, *brazaleras* are hung beside the arms at either side of the *vuelta grande*. The *brazaleras, del derecho y del izquierdo*, are composed of silver chains laden with medallions, reliquaries, miscellaneous silver and glass ornaments, and a jet amulet. Fastened to the front of the bodice at the shoulders, they are tied with green and yellow silk ribbons which are passed through eyelets made for that purpose. Details of the pieces follow the full length illustrations. In the original photographs, these details are shown to actual size.

Donación
De Hoyos

COPYRIGHT, 1931, BY
THE HISPANIC SOCIETY OF AMERICA



R. 20224

100mm

C 236-28

JEWELRY BRAZALERAS LA ALBERCA, SALAMANCA

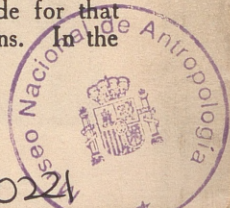
FROM PHOTOGRAPHS
IN THE COLLECTION OF
THE HISPANIC SOCIETY OF
AMERICA



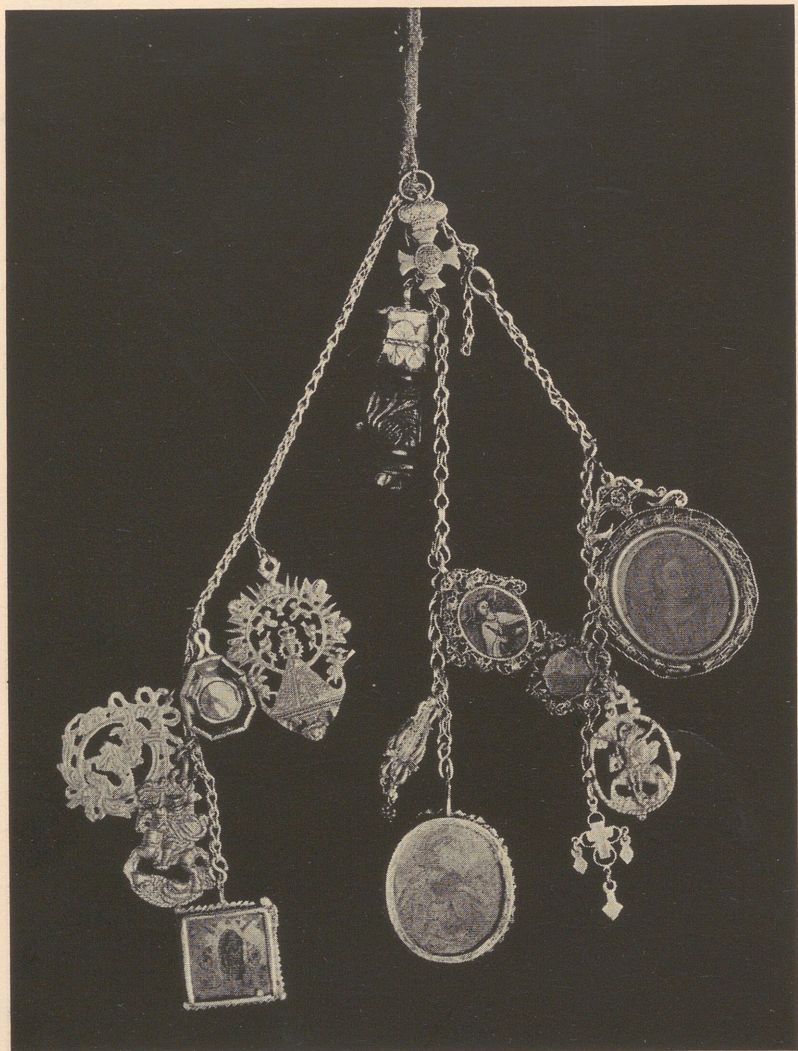
P(12611)

In addition to the necklaces of the wedding costume, *brazaleras* are hung beside the arms at either side of the *vuelta grande*. The *brazaleras, del derecho y del izquierdo*, are composed of silver chains laden with medallions, reliquaries, miscellaneous silver and glass ornaments, and a jet amulet. Fastened to the front of the bodice at the shoulders, they are tied with green and yellow silk ribbons which are passed through eyelets made for that purpose. Details of the pieces follow the full length illustrations. In the original photographs, these details are shown to actual size.

COPYRIGHT, 1931, BY
THE HISPANIC SOCIETY OF AMERICA



A. 20224



P(12641)

BRAZALERA DEL DERECHO.



P(12642)



P(12646)



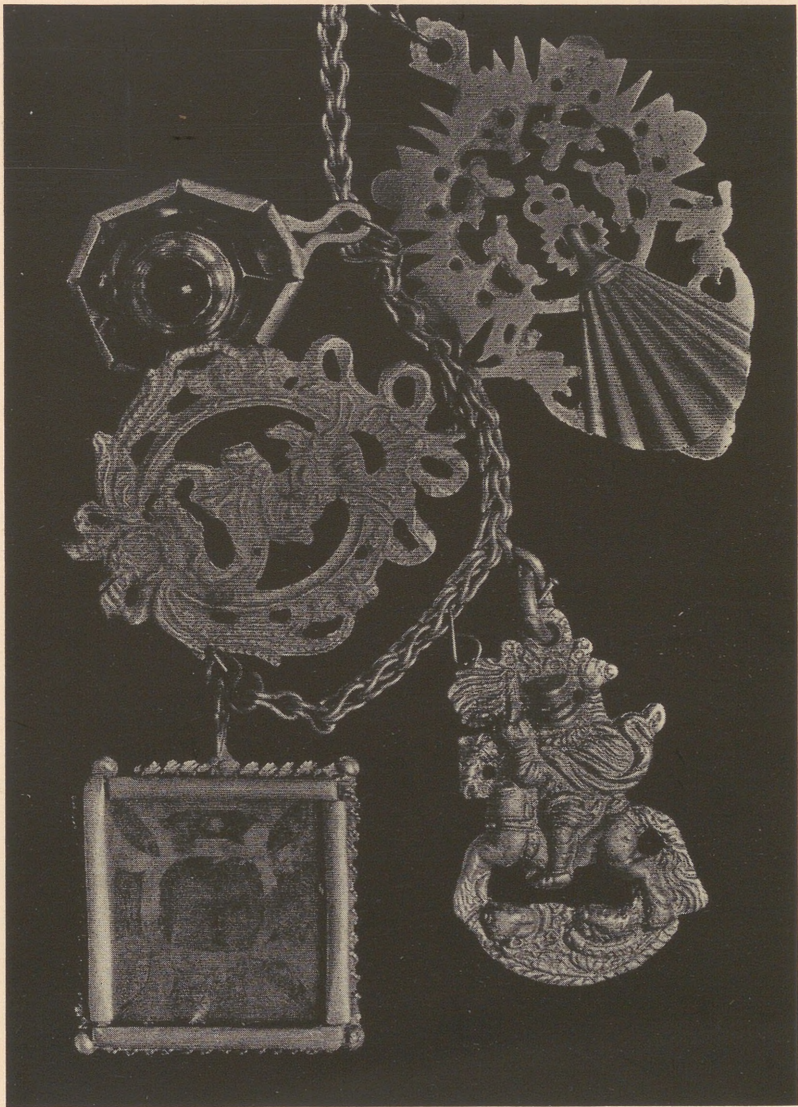
P(12647)



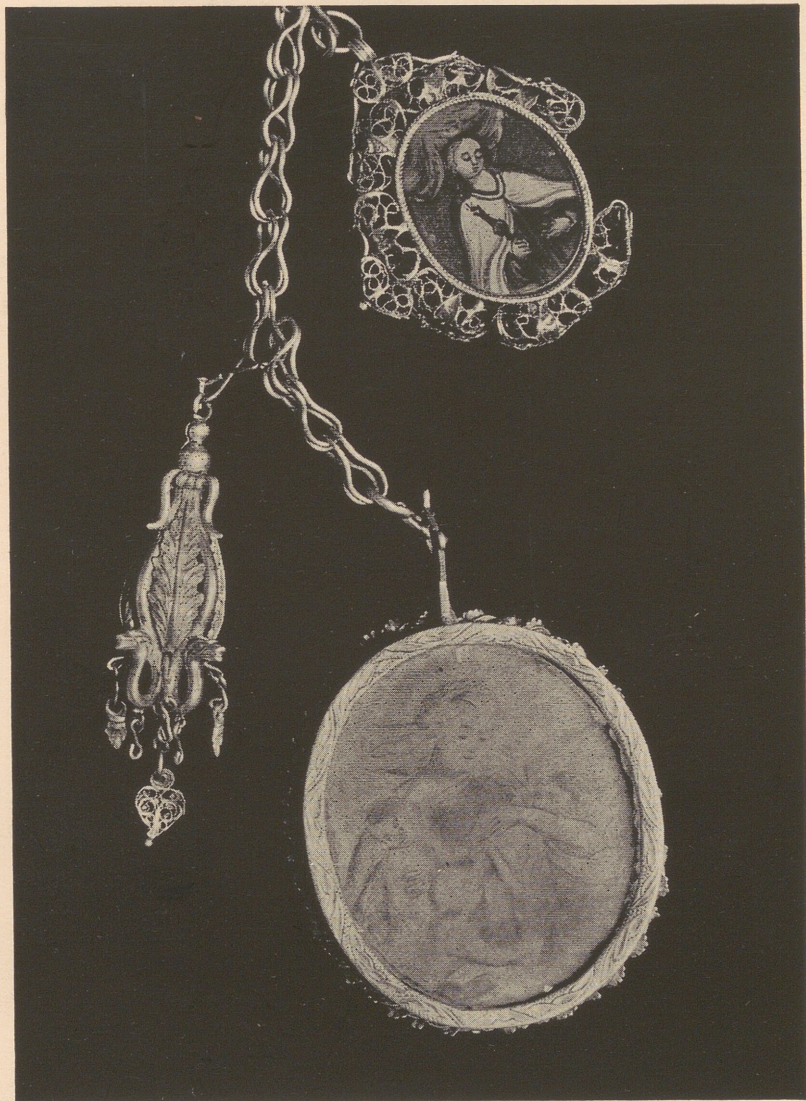
P(12655)



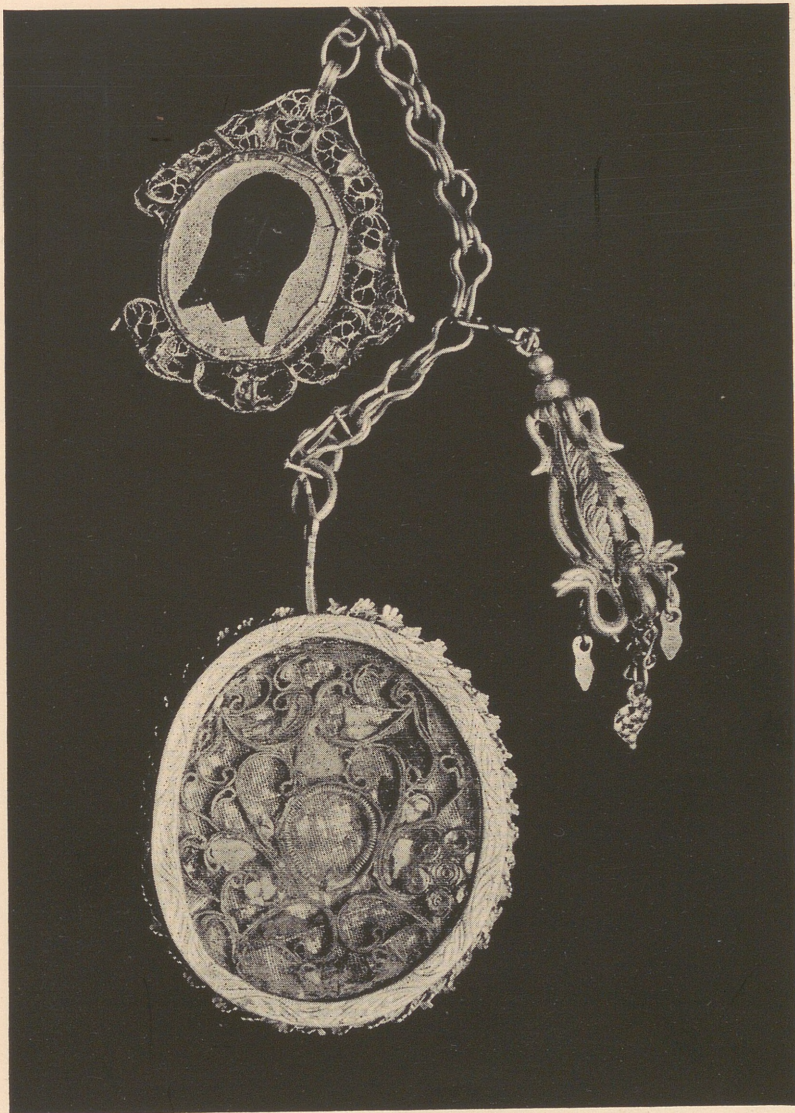
P(12654)



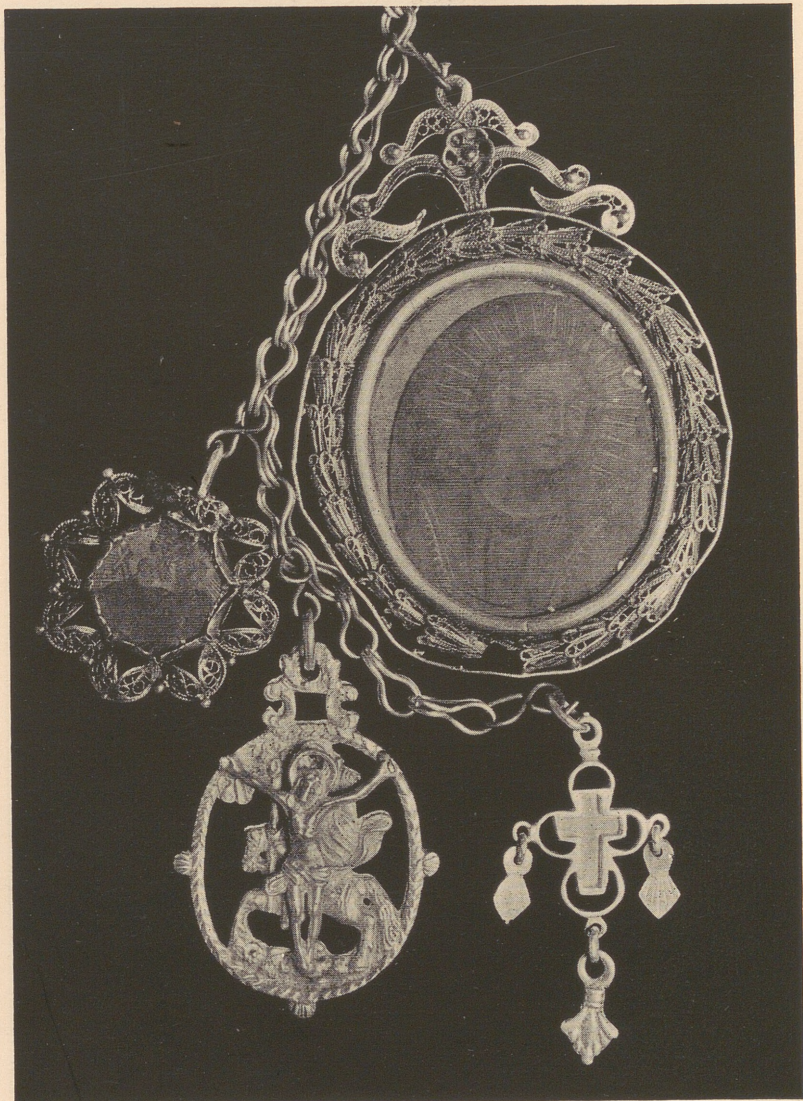
P(12644)



P(12648)



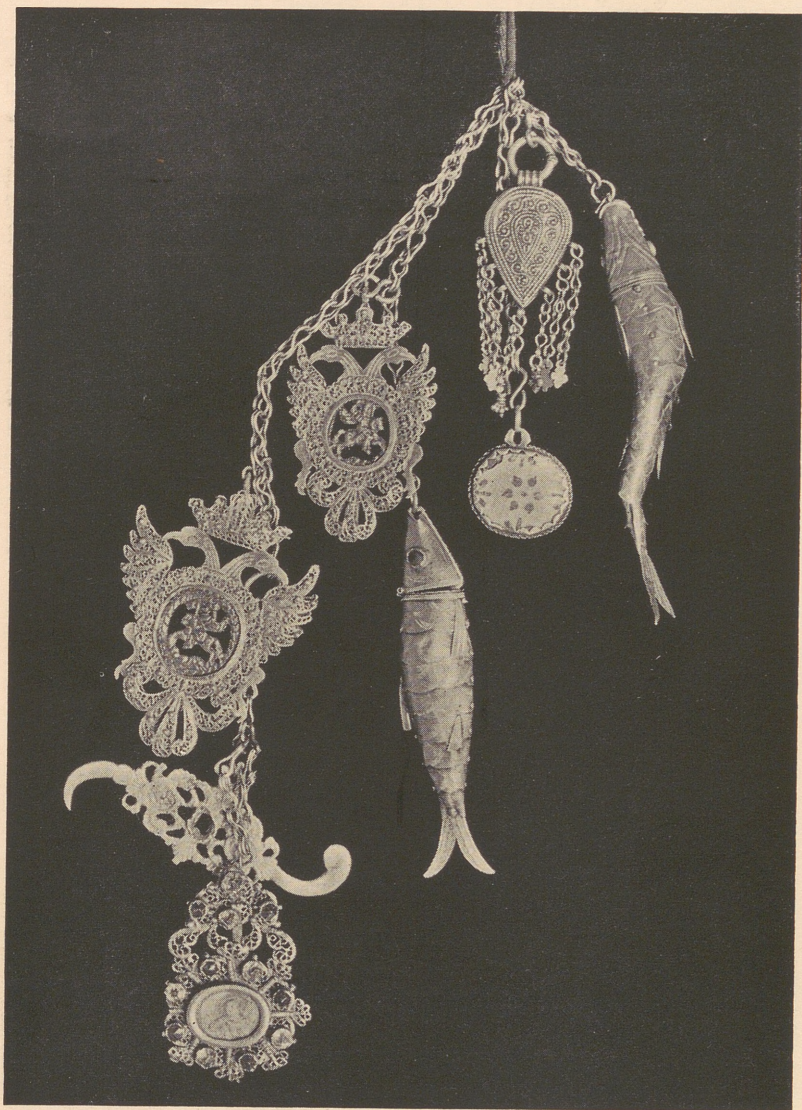
P(12649)



P(12650)



P(12651)



P(12652)

BRAZALERA DEL IZQUIERDO.



P(12653)



P(12658)



P(12656)



P(12657)



117