

7

VIOLIN 2

Orquesta Sinfónica de Madrid

Núm. --75

EL JARDIN ENCANTADO DE

KLINGSOR'S ( PARSIFAL )

WAGNER



# Klingsor's Zaubergarten und die Blumenmädchen aus Parsifal

von

RICHARD WAGNER

ORFÈDRE DE MADRID  
DEPOSITARIA  
1  
--75

E. STEINBACH.

## VIOLINO II.

Heftig, doch nie übereilt.

The musical score for Violino II consists of ten staves. The first staff is for Bassi, followed by Viol. II., Viol. I., and Timp. (Tympani). The score includes various dynamics such as *p*, *cresc.*, *f*, *ff*, *piu f*, *mf*, *p*, *p poco cresc.*, *sf*, and *piu f*. Performance instructions include *pizz.* (pizzicato) and *arco* (arco). The score is marked with rehearsal letters A, B, and C, and includes first, second, and third endings. The key signature is one sharp (F#) and the time signature is 2/4.

Stich u. Druck von B. SCHOTT'S SÖHNE in MAINZ.

24267

VIOLINO II.

First staff of music, treble clef, key signature of two flats. It begins with a forte (*f*) dynamic and a triplet of eighth notes. The dynamics fluctuate, including piano (*p*) and another forte (*f*).

Second staff of music, treble clef, continuing the melodic line with various articulations and dynamics, including piano (*p*).

Third staff of music, treble clef, featuring a *(zart.)* marking and a first ending bracket labeled '1'.

Fourth staff of music, treble clef, containing several triplet markings over eighth notes.

Fifth staff of music, treble clef, featuring trills (*tr*) and a piano (*p*) dynamic.

Sixth staff of music, treble clef, marked with a **D** (Dolce) and includes *cresc.* (crescendo) markings and a piano (*p*) dynamic.

Seventh staff of music, treble clef, featuring *piu f* (pizzicato forte), *ff* (fortissimo), and *pizz.* (pizzicato) markings.

Eighth staff of music, treble clef, marked *arco* and *ff* (fortissimo), showing a dense texture of notes.

Ninth staff of music, treble clef, featuring *pizz.* (pizzicato) and *dim.* (diminuendo) markings.

VIOLINO II.



arco *p* *piu p* *pp* **E** *pizz.* *p*

arco *pizz.*

*poco f* *stacc.* *piu f*

*f* *ff* *dim.*

*dim.* *dim.* (mit Dämpfer.) *p*

Das Zeitmaas' sanft belebend bis zu = **F** Leicht bewegt.

*1* *5*

*4*

**G** *piu p* *p*

*p dolce* *2*

VIOLINO II.

The musical score for Violino II consists of ten staves of music. The key signature has two flats (B-flat and E-flat), and the time signature is 4/4. The score includes various musical notations such as trills (tr), triplets (3), and dynamic markings (p, piu p, pp, f, cresc., dim., pizz.).

- Staff 1:** Starts with a rest, followed by a triplet of eighth notes. Includes trills and a dynamic marking of *p*. A hairpin indicates a crescendo from *p* to *f*, marked *ausdrucksvoll*, followed by a decrescendo to *dim.*. A section marker **II** is placed above the staff.
- Staff 2:** Features a triplet of eighth notes and a dynamic marking of *piu p*.
- Staff 3:** Features a triplet of eighth notes and dynamic markings of *piu p*, *pp*, and *pp*.
- Staff 4:** Features a dynamic marking of *pp*.
- Staff 5:** Features a dynamic marking of *p* and a section marker **I** above the staff.
- Staff 6:** Features a dynamic marking of *p*, trills, and triplets.
- Staff 7:** Features a triplet, a dynamic marking of *dim.*, a *geth.* (grace note) marking, a dynamic marking of *p*, a *pizz.* (pizzicato) marking, and a dynamic marking of *p*. A note is marked *(ohne Dämpfer.)* (without damper). A triplet is also present.
- Staff 8:** Features a section marker **K** above the staff, a dynamic marking of *p*, a *cresc.* marking, a dynamic marking of *f*, and a *dim.* marking.
- Staff 9:** Features a section marker **L** above the staff, a dynamic marking of *p*, a *cresc.* marking, a dynamic marking of *poco f*, a *dim.* marking, and a dynamic marking of *p*.

VIOLINO II.



*cresc.* *f* 4

*poco f* *p* *cresc.* *f* *dim.* *p* **M** *trem.*

*p* *tr* *p* *poco cresc.*

*f* *piu f* *p stacc.*

*poco cresc.*

*fp* *fp* *p poco cresc.* **N**

*tr* *f* *p stacc.* *poco cresc.*

*piu f* *f* *trem.*

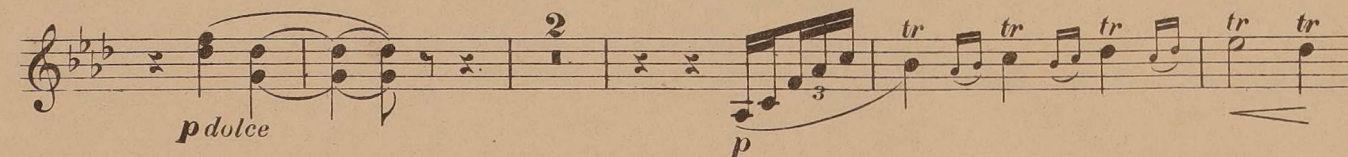
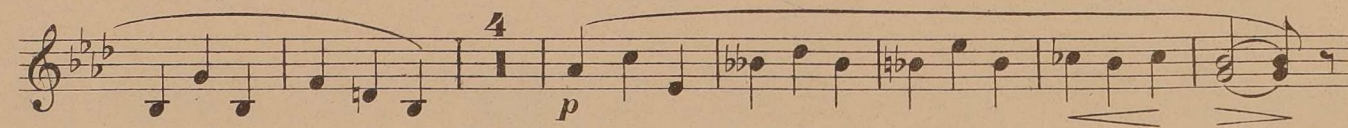
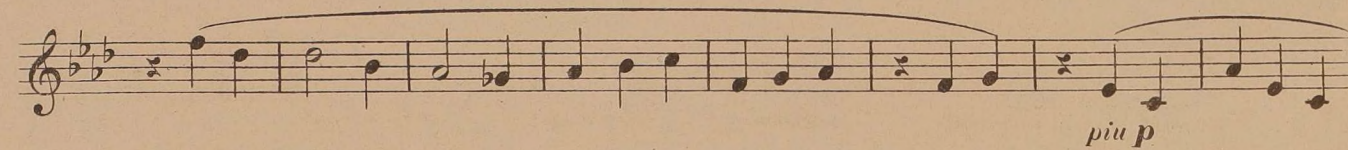
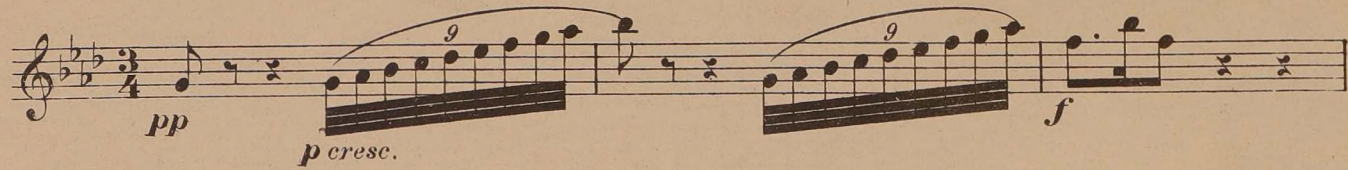
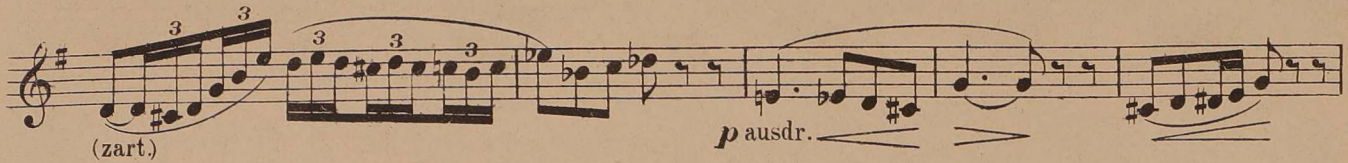
**O** Sehr zurückhaltend.

*ff dim.* *p* Immer etwas langsamer werdend *pp* *piu p*

1 2 3 4 5 6

# VIOLINO II.

**P** Sehr ruhig, (im Charakter d.v. Zeitmaasses.)





VIOLINO II.

**S**

*p cresc. poco f dim. p*

*cresc. f ohne Dämpfer*

**4**

*poco f p cresc. fp*

**T**

*fp p poco cresc. f*

**U**

*p stacc.*

*poco cresc. p*

**V**

*cresc. poco rit.*

*p getheilt dim. pp*