

Coronpa  $\text{d}^{\text{ta}}$  //



344

Fantasia Morisca //

// Chari //



# A Granada

-La-

And<sup>te</sup> cantabili  $\text{3/4}$   $\text{F#}$   $\text{7}$  |  $\text{5}$   $\text{3}$   $\text{4}$  |  $\text{8}$  |  $\text{8}$

$\text{5}$   $\text{4}$   $\text{3}$   $\text{2}$   $\text{1}$   $\text{2}$   $\text{3}$   $\text{4}$  |  $\text{5}$   $\text{4}$   $\text{3}$   $\text{2}$   $\text{1}$  |  $\text{8}$  |  $\text{8}$

$\text{5}$   $\text{4}$   $\text{3}$   $\text{2}$   $\text{1}$   $\text{2}$   $\text{3}$   $\text{4}$  |  $\text{5}$   $\text{4}$   $\text{3}$   $\text{2}$   $\text{1}$  |  $\text{8}$  |  $\text{8}$

$\text{5}$   $\text{4}$   $\text{3}$   $\text{2}$   $\text{1}$   $\text{2}$   $\text{3}$   $\text{4}$  |  $\text{5}$   $\text{4}$   $\text{3}$   $\text{2}$   $\text{1}$  |  $\text{8}$  |  $\text{8}$

$\text{5}$   $\text{4}$   $\text{3}$   $\text{2}$   $\text{1}$   $\text{2}$   $\text{3}$   $\text{4}$  |  $\text{5}$   $\text{4}$   $\text{3}$   $\text{2}$   $\text{1}$  |  $\text{8}$  |  $\text{8}$

$\text{5}$   $\text{4}$   $\text{3}$   $\text{2}$   $\text{1}$   $\text{2}$   $\text{3}$   $\text{4}$  |  $\text{5}$   $\text{4}$   $\text{3}$   $\text{2}$   $\text{1}$  |  $\text{8}$  |  $\text{8}$

$\text{5}$   $\text{4}$   $\text{3}$   $\text{2}$   $\text{1}$   $\text{2}$   $\text{3}$   $\text{4}$  |  $\text{5}$   $\text{4}$   $\text{3}$   $\text{2}$   $\text{1}$  |  $\text{8}$  |  $\text{8}$

$\text{5}$   $\text{4}$   $\text{3}$   $\text{2}$   $\text{1}$   $\text{2}$   $\text{3}$   $\text{4}$  |  $\text{5}$   $\text{4}$   $\text{3}$   $\text{2}$   $\text{1}$  |  $\text{8}$  |  $\text{8}$

$\text{5}$   $\text{4}$   $\text{3}$   $\text{2}$   $\text{1}$   $\text{2}$   $\text{3}$   $\text{4}$  |  $\text{5}$   $\text{4}$   $\text{3}$   $\text{2}$   $\text{1}$  |  $\text{8}$  |  $\text{8}$

All<sup>o</sup> mod<sup>to</sup>  $\text{2/4}$   $\text{F#}$   $\text{7}$  |  $\text{5}$   $\text{4}$   $\text{3}$   $\text{2}$   $\text{1}$  |  $\text{8}$  |  $\text{8}$

$\text{5}$   $\text{4}$   $\text{3}$   $\text{2}$   $\text{1}$   $\text{2}$   $\text{3}$   $\text{4}$  |  $\text{5}$   $\text{4}$   $\text{3}$   $\text{2}$   $\text{1}$  |  $\text{8}$  |  $\text{8}$

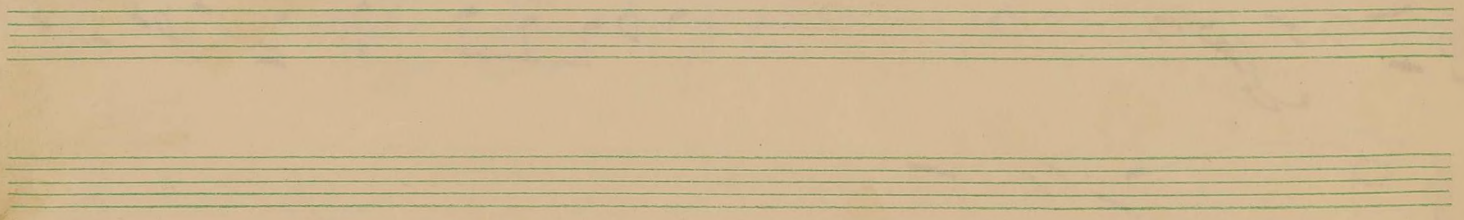
$\text{5}$   $\text{4}$   $\text{3}$   $\text{2}$   $\text{1}$   $\text{2}$   $\text{3}$   $\text{4}$  |  $\text{5}$   $\text{4}$   $\text{3}$   $\text{2}$   $\text{1}$  |  $\text{8}$  |  $\text{8}$



Handwritten musical score consisting of 12 staves. The notation includes various musical symbols such as notes, rests, and clefs. There are several circled numbers (7, 8, 9, 10) and other markings (like '4', '2.5', 'pp', 'f') scattered throughout the score. The score appears to be a mix of vocal lines and piano accompaniment, with some staves containing figured bass notation.



Handwritten musical score for voice and piano. The score consists of ten staves. The first staff is for the voice, starting with a treble clef, a key signature of one flat (B-flat), and a common time signature. The notes are mostly half notes and quarter notes, with some accidentals. A circled number '11' is written in the left margin next to the first measure. The second staff is for the piano accompaniment, starting with a treble clef and a common time signature. It features a variety of rhythmic patterns, including eighth and sixteenth notes, and rests. A circled number '12' is written in the right margin above the fourth measure. The third staff continues the piano accompaniment with similar rhythmic patterns. The fourth staff shows a change in the piano accompaniment, with a circled number '13' in the right margin above the fifth measure. The fifth staff continues the piano accompaniment. The sixth staff shows a change in the piano accompaniment, with a circled number '14' in the right margin above the seventh measure. The seventh staff continues the piano accompaniment. The eighth staff shows a change in the piano accompaniment, with a circled number '14' in the right margin above the seventh measure. The ninth staff continues the piano accompaniment. The tenth staff shows a change in the piano accompaniment, with a circled number '14' in the right margin above the seventh measure. The score ends with a double bar line.





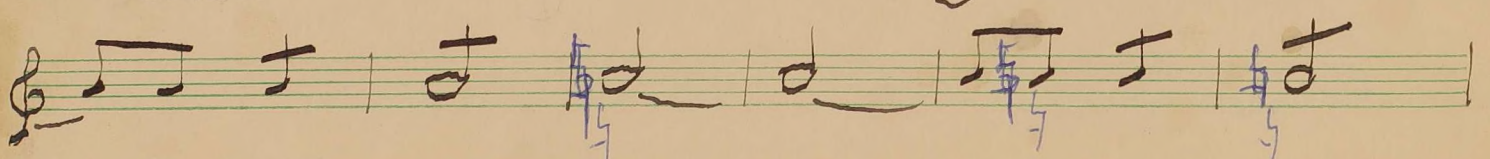
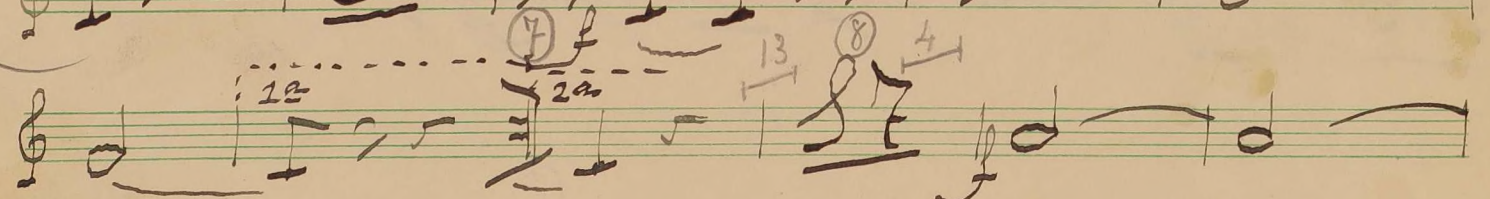
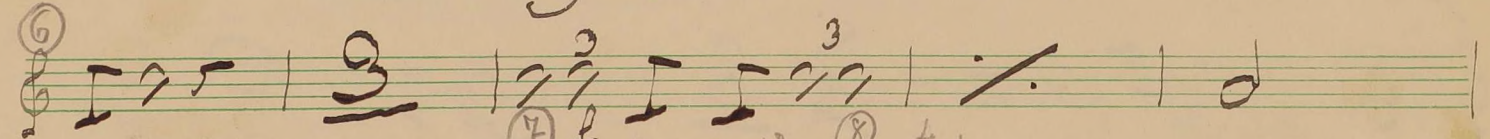
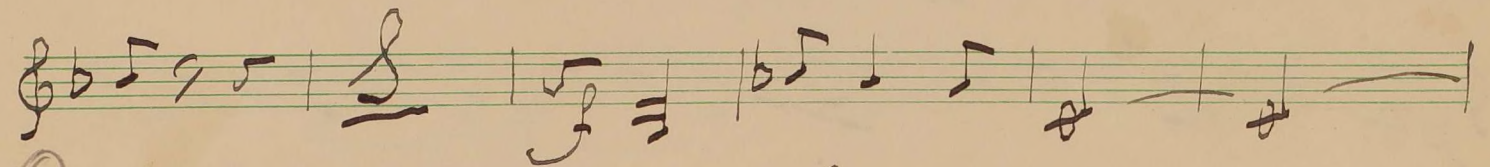
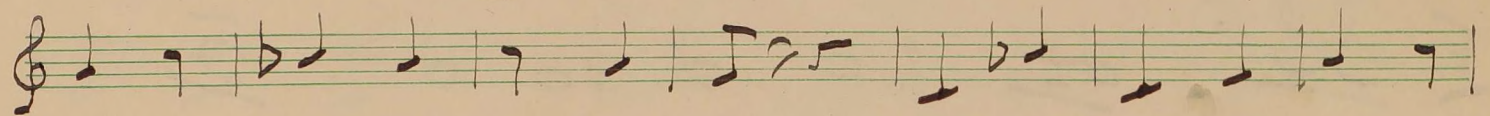
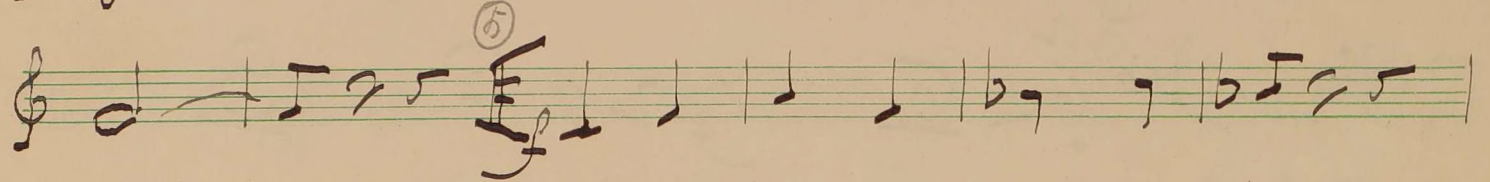
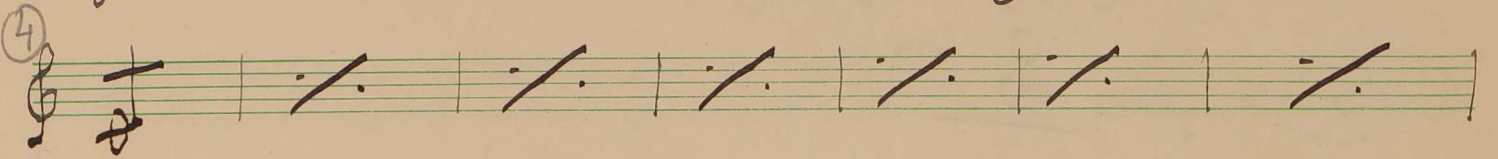
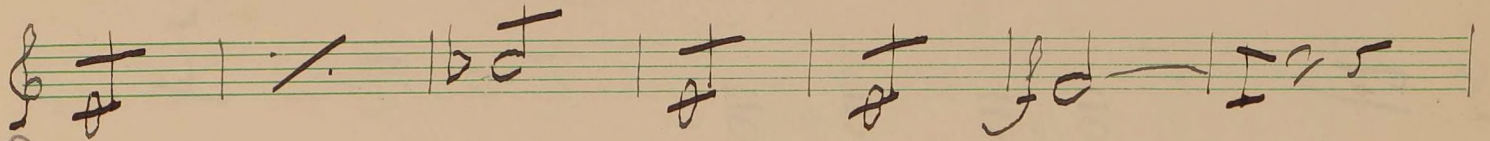
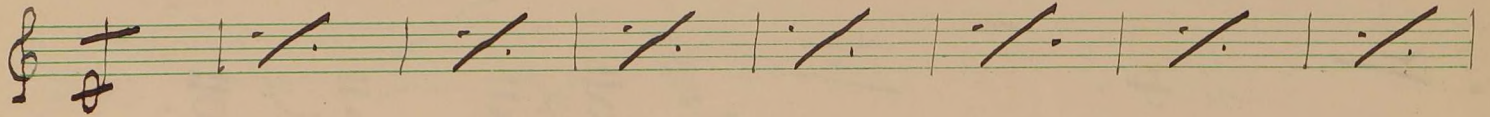




# Final =

-La-

mod<sup>to</sup>  $\text{♩} \text{e}$  2.0 || All<sup>o</sup> mod<sup>to</sup>  $\text{♩} \text{e}$  2.9  $\flat \sharp$





Handwritten musical score on ten staves. The first staff has a treble clef and a key signature of one sharp (F#). It contains several measures with notes and rests, some marked with blue '5' and '7'. The second staff has a treble clef and contains measures with notes and rests, some marked with a circled '9'. The third staff has a treble clef and contains measures with notes and rests, some marked with a circled '10'. The fourth staff has a treble clef and contains the word "Presto" in a large, stylized font, followed by notes and rests. The fifth staff has a treble clef and contains notes and rests. The sixth staff has a treble clef and contains notes and rests. The seventh staff has a treble clef and contains notes and rests. The eighth staff has a treble clef and contains notes and rests. The ninth staff has a treble clef and contains notes and rests. The tenth staff has a treble clef and contains notes and rests. The score ends with a double bar line and a fermata.

