

Flauta Sa

237

Overtura  
de la Opera  
Chowantchina  
de  
Moussorgski

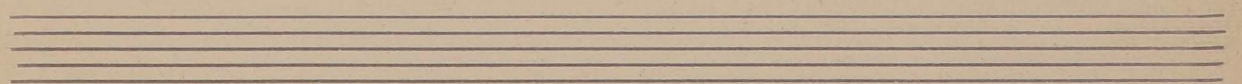
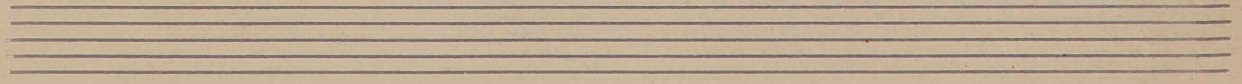
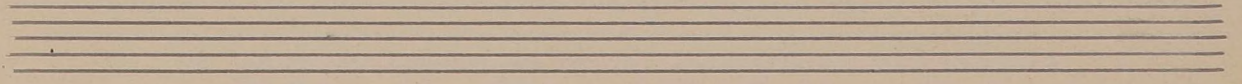
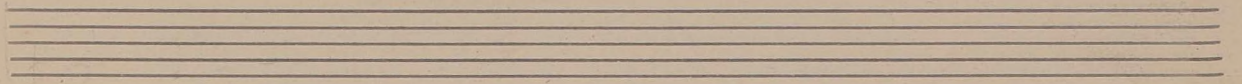
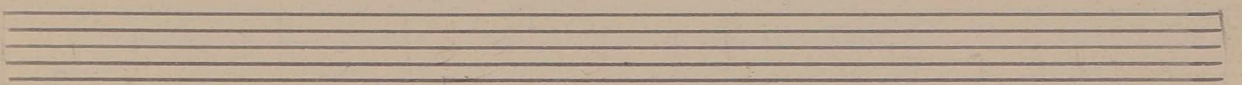
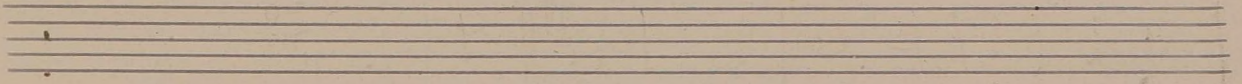
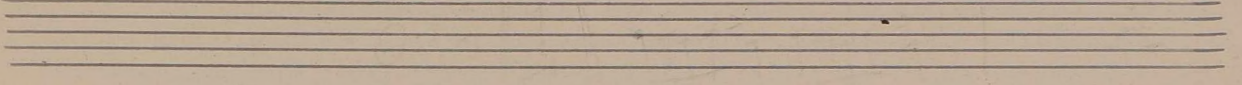
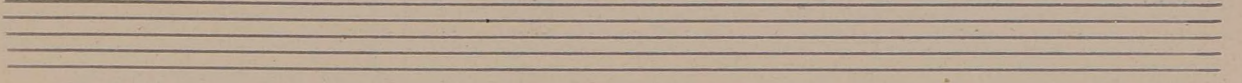
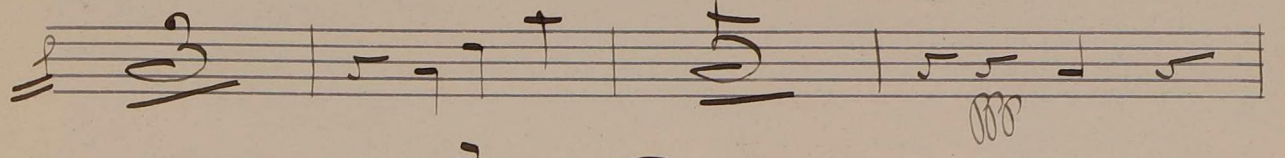
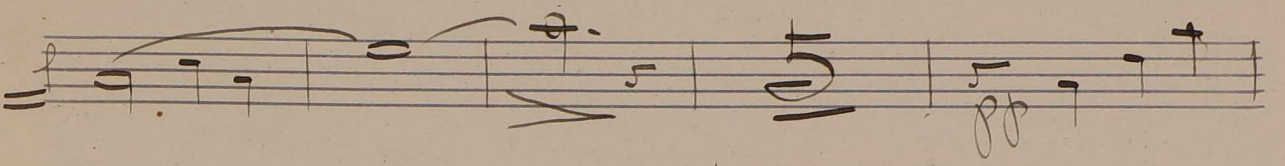
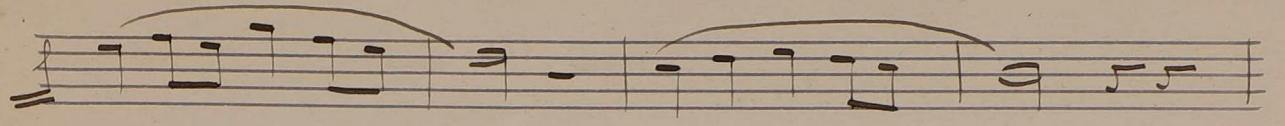


~~9772  
9006~~

*Andante Tranquilo.*

Handwritten musical score for the first section, *Andante Tranquilo*. The score is written on five staves. The first staff begins with a treble clef, a key signature of three sharps (F#, C#, G#), and a 2/4 time signature. The tempo is *Andante Tranquilo*. The music features a melodic line with a *solo* marking and a dynamic of *pp*. The second staff has a bass clef and a dynamic of *pp*. The third staff has a bass clef and a dynamic of *pp*. The fourth staff has a bass clef and a dynamic of *pp*. The fifth staff has a bass clef and a dynamic of *pp*. The section ends with a *dim.* marking.

Handwritten musical score for the second section, *Mosso* and *Moderato alla breve*. The score is written on five staves. The first staff begins with a treble clef, a key signature of three sharps (F#, C#, G#), and a 5/4 time signature. The tempo is *Mosso*. The music features a melodic line with a *solo* marking and a dynamic of *pp*. The second staff has a bass clef and a dynamic of *pp*. The third staff has a bass clef and a dynamic of *pp*. The fourth staff has a bass clef and a dynamic of *pp*. The fifth staff has a bass clef and a dynamic of *pp*. The section ends with a *dim.* marking.



Flauta So

Marcha.

de

Moussoreski.



