

TIMBAL

Orquesta Sinfónica de Madrid.

Número 189

VARIACIONES SINFONICAS



ELGAR

TIMBAL

Orquesta Sinfónica de Madrid.

Número 189

VARIACIONES SINFONICAS



ELGAR

6.011.
35

VARIATIONS

TIMPANI.

Composed by

EDWARD ELGAR, Op. 36.

London: NOVELLO & COMPANY, LIMITED.

189

Enigma.

Price 1/-

in G-B^b-F

Andante. 6 4 1 5 1 rit. attacca

I.

(C. A. E.)

2 *L'istesso tempo.*
a tempo

VI. I. ppp ppp

3 4 trill trill trill 4 1 trill 2 2 rit. (F to D, B^b to C#)

al 8

II.

(H. D. S-P.)

5 *Allegro.*

VI. I. p pp

al 1

SOLO. pp

4

10989

The right of Public Representation and Performance is reserved.
The purchase of Scores and Parts carries with it the right of Public Performance. If it is desired to use hired or borrowed copies of Scores or Parts, the permission of the Publishers must be first obtained.

III.

TIMPANI.

(R. B. T.)

8 Allegretto.

1 3 6 9

Ob. Cl.

mf *p* *p cresc.*

10 (after repeating) 7

C# to C#
6 7 1. 2.

p *p*

IV.

(W. M. B.)

11 Allegro di molto.

2 12 *tr* 1

f

1 1 1 13 6 *tr*

tr *tr* *tr* *tr* *sf* *p cresc.*

14

fff simile

V.

(R. P. A.)

15 Moderato.

3

mf VI. *pp* *dim.*

3 17 *tr* *tr* *tr*

p *p* *dim.*

4 18 2 *tr* *tr* *tr*

D to G^{high} *pp* *p* *dim.* *attacca*

al 19

VI.

TIMPANI.

(Ysobel.)

19 *Andantino.*
Viola

VII.

(Troyte.)

23 *presto.*
SOLO.

G to E^b
C to B^b
G to F

al 33

VIII.

TIMPANI.

(W. N.)

30 Allegretto.

7 31 10 32 7 1

Cl. I. rit. attacca

IX.

(Nimrod.)

33 Adagio.
VI. I.

6 34 Fl. e Cl. 6 VI. I.

ppp

35 1 trm 1 trm 2

pp

trm 36 trm trm 1 trm 3 trm

mf f dim.

trm tr trm 37 trm

cresc. rit. ff pp

E^b to D.
F to G.

X.

(Dorabella.)

38 Allegretto.

7 39 10 40

VI. I. Cl.

41 11 42

p dim. VI. I.

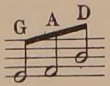
2 43 4 44 11 45

p P B^b to A.

VI. I. dim. 4 46 4

pp

al 52



XI.

(G. R. S.)

TIMPANI.

47 *Allegro di molto.*

ff Strings Fag. pp

5 48 1 2 3 4

Wood ff sf sf sf sf

5 49 1 1 1

sf sf p p

1 50

p cresc. ff

2 1 2 3 4 5 51 *tr*

sf sf sf sf sf p cresc.

f p cresc. molto ff sf

A to C.
G to F.

XII.

(B. G. N.)

52 *Andante.*

Solo Cello Tutti

3 53 *tr* 7 54 8 rit. 1 *

p pp attacca

* This bar should be omitted except when Var. XII is played separately.

XIII.

(* * *)

55 Moderato.

Cl.

7 56 poco rall.

VI. I.

SOLO.
tranquillo

PPP (with Side drum sticks)

dim. dim. > PPP

58 Naturale
cresc. p ma marcato cresc. mf dim. molto PPP

59 Come prima.

9 60 poco rall.

molto tranquillo

F to G. C to A. VI. I.

ppp (Side drum sticks)

dim. erit.

XIV.

E. D. U.

Finale.

61 Allegro. Naturale
stacc. 1

pp cresc.

cresc.

62 largamente a tempo
ff

3 63 1 animato p P P

64 *largamente* *a tempo*
 fff *trm trm* 2 *trm trm* 1 *dim.*

65 *Poco più tranquillo.* 66 4 67 1
 p 7 Corni f

1 68 *trm* 2
 f *CRESC.* *CRESC.* f

trm 1 *trm trm* 69 *stringendo*
 ff *dim.* fff

6 70 *TEMPO Iº*
 fffz pp *CRESC.*

71 *largamente* *a tempo* 2 *trm trm* 1 72 4
 fff

73 4 SOLO. P
 pp *dim.*

2 *trm* 74 11 75 1
 ppp *animando*

1
pp ma marcato *cresc.*

76 *ff* *tr* *ff* *5* *accel. poco a poco* *tr* 77 *mf* *f*
 VI.I. (a 2)

tr tr *2* *tr* *1* *tr* 78 *sempre accel.*
mf *f* *mf* *ff* *p cresc.* *sf* *sf*

-1 -1 -1 *Presto.* 79 *p*
sf *sf* (a 1)

8 80 *tr* *1* *tr* 8 *tr* *2* *tr*
sf *D to E^b* *f* *sf* *p*

5 81 *f* *1* *1*

1 82 *tr* *fff* *mi*

1 *tr* 83 *tr* *1* *2* *3*
mi *mi* *p* *ff*

4 5 *tr* *rit. tr* *sf* *sf* *p* *molto cresc.* *ffz*