

Fagot. 2º

(= 142)

Overture in D. dur.

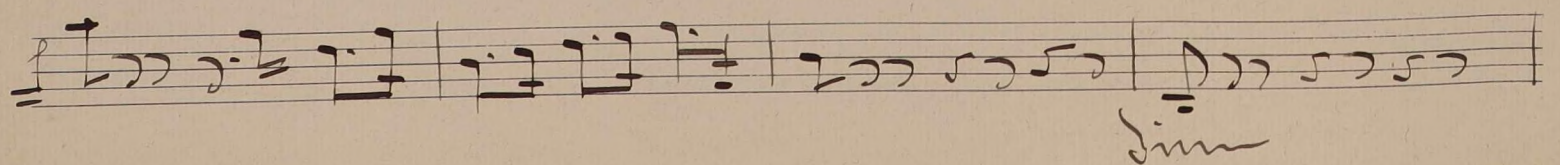
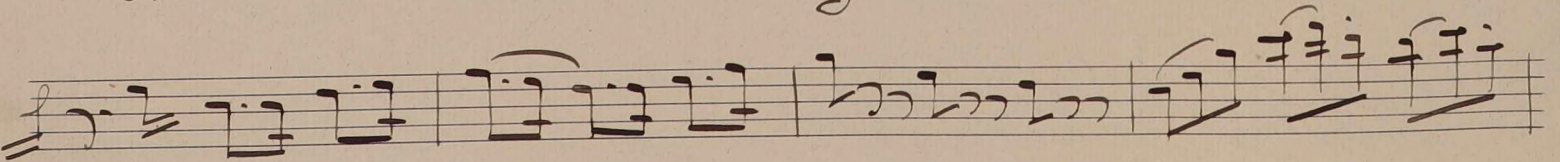
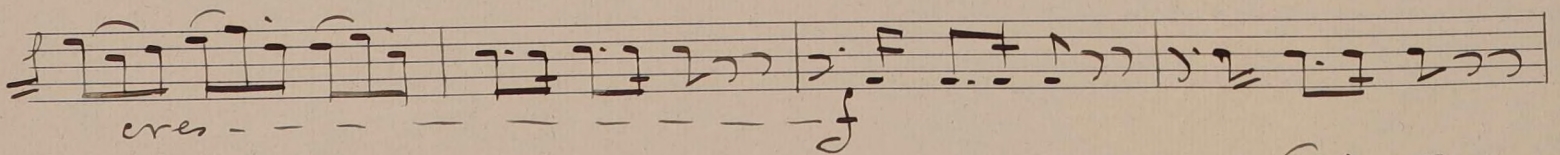
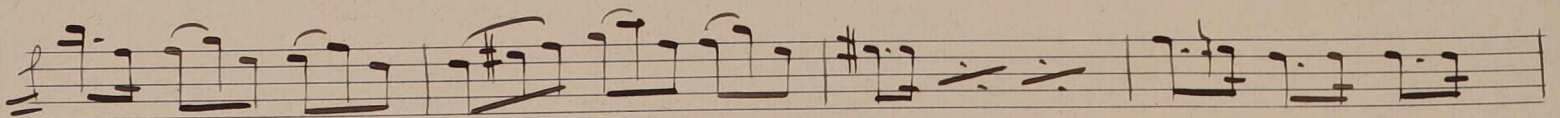
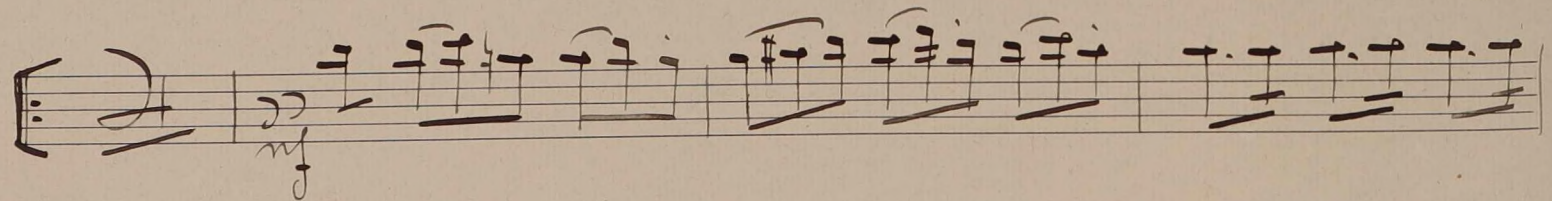
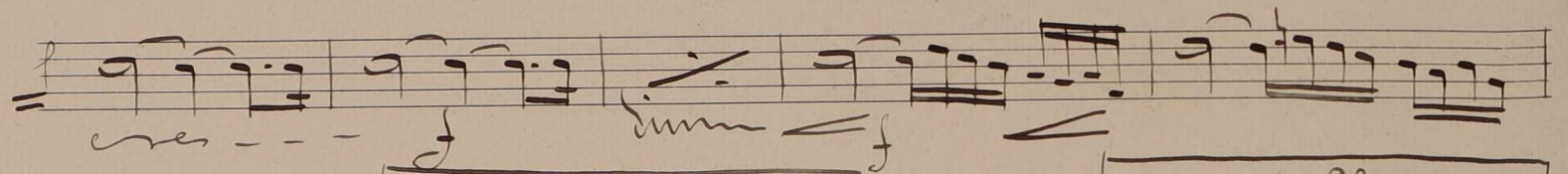
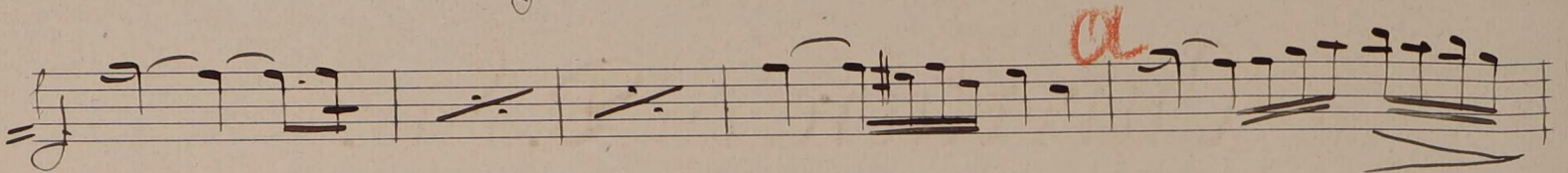
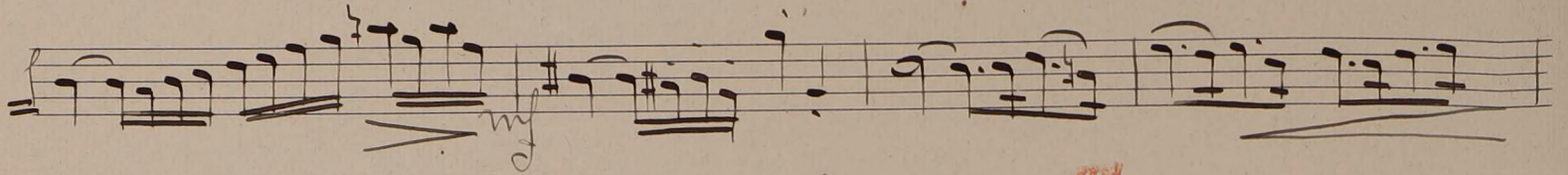
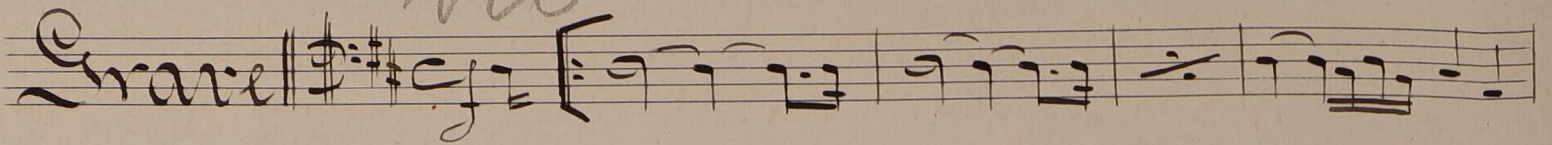
Suit para Orquesta

de

Sach

Overture in D. Dur.

no



Handwritten musical notation on a single staff, featuring a treble clef and a key signature of one sharp (F#). The notes are mostly quarter notes with stems pointing down. A red '33' is written in the top left corner. Below the staff, the word 'cres' is written with a dashed line underneath.

Handwritten musical notation on a single staff, featuring a treble clef and a key signature of one sharp (F#). The notes are mostly quarter notes with stems pointing down. A red '33' is written in the top left corner. Below the staff, the word 'sim' is written with a wavy line underneath. A 'p' dynamic marking is present at the end of the staff.

Handwritten musical notation on a single staff, featuring a treble clef and a key signature of one sharp (F#). The notes are mostly quarter notes with stems pointing down. Below the staff, the words 'cres' and 'cres' are written with dashed lines underneath.

Handwritten musical notation on a single staff, featuring a treble clef and a key signature of one sharp (F#). The notes are mostly quarter notes with stems pointing down. Below the staff, the words 'cres' and 'ma' are written with dashed lines underneath. A red '33' is written above the staff.

Handwritten musical notation on a single staff, featuring a treble clef and a key signature of one sharp (F#). The notes are mostly quarter notes with stems pointing down.

Handwritten musical notation on a single staff, featuring a treble clef and a key signature of one sharp (F#). The notes are mostly quarter notes with stems pointing down.

Handwritten musical notation on a single staff, featuring a treble clef and a key signature of one sharp (F#). The notes are mostly quarter notes with stems pointing down.

Handwritten musical notation on a single staff, featuring a treble clef and a key signature of one sharp (F#). The notes are mostly quarter notes with stems pointing down.

Handwritten musical notation on a single staff, featuring a treble clef and a key signature of one sharp (F#). The notes are mostly quarter notes with stems pointing down. A red '33' is written above the staff.

Four empty musical staves at the bottom of the page, with a large, decorative, swirling signature or flourish written across them in the bottom right corner.

A handwritten musical score consisting of ten staves. The notation includes various rhythmic values, slurs, and dynamic markings. The dynamics used are *f*, *mf*, *cres*, *dim*, and *mf*. There are several red markings: a red '8' on the fifth staff, a red 'F' on the eighth staff, and a red '8' on the ninth staff. The score concludes with a double bar line and a repeat sign on the tenth staff.

Handwritten musical notation on a single staff, featuring rhythmic patterns and a dynamic marking of *mf*.

Handwritten musical notation on a single staff, continuing the rhythmic patterns from the previous staff.

Handwritten musical notation on a single staff, continuing the rhythmic patterns from the previous staff.

Handwritten musical notation on a single staff, starting with the word *Grave* and including dynamic markings of *f* and *mf*.

Handwritten musical notation on a single staff, featuring rhythmic patterns and dynamic markings of *f* and *mf*.

Handwritten musical notation on a single staff, featuring rhythmic patterns and dynamic markings of *f* and *mf*.

Handwritten musical notation on a single staff, featuring rhythmic patterns and dynamic markings of *f* and *mf*.

Handwritten musical notation on a single staff, featuring rhythmic patterns and dynamic markings of *f* and *mf*.

Handwritten musical notation on a single staff, starting with the word *Piu Vivace* and including a time signature of $\frac{9}{8}$ with a $\frac{3}{2}$ alteration.

Handwritten musical notation on a single staff, featuring a large slur and dynamic markings of *ver* and *2^o*.

Four empty musical staves at the bottom of the page, with a large, decorative flourish or signature written across them.

Bourrée 1^o

Handwritten musical score for Bourrée 1^o. The score is written on four staves in G major (one sharp) and 2/4 time. The tempo is marked 'allegro'. The notation includes various dynamics such as *mf*, *ppp*, *p*, and *f*, along with performance instructions like *maiolato*, *cres*, *dim*, and *rit*. The piece concludes with a double bar line and the word *rit* written below the staff.

Bourrée 2^o

Handwritten musical score for Bourrée 2^o. The score is written on six staves in G major (one sharp) and 2/4 time. The tempo is marked 'allegro'. The notation features a consistent rhythmic pattern of eighth notes and includes dynamics such as *mf*, *cres*, *dim*, and *for*. The piece concludes with a double bar line and the word *dim* written below the staff.

sin *p* D. C. Bourrée 2^o

Savota.

no
Con moto gracioso *mf*

sin *mf* *p*

cres *p* *mf*

cres - *p* *cres -*

cres -

f *mf*

f

Menuet 1^o alternativament.

Handwritten musical score for Minuet No. 1, marked "alternativament". The score is written on six staves. The first staff begins with the tempo marking "all^o" and the key signature of two sharps (F# and C#). The time signature is 3/4. The music features a variety of rhythmic patterns, including eighth and sixteenth notes, and rests. Performance markings include "cres" (crescendo), "mf" (mezzo-forte), and a red "H" above a fermata. The piece concludes with a double bar line and a repeat sign.

Menuet 2^o

Handwritten musical notation for Minuet No. 2, consisting of a treble clef, a key signature of two sharps (F# and C#), and a time signature of 3/4. The notation includes a series of rhythmic symbols: a quarter note, a half note, a quarter note, a half note, and a quarter note, followed by a double bar line and the text "D.B. menuet. 1^o".

Rejouissance

Handwritten musical score for "Rejouissance", marked "vivo". The score is written on two staves. The first staff begins with the tempo marking "vivo." and the key signature of two sharps (F# and C#). The time signature is 3/4. The music is characterized by a lively, rhythmic pattern of eighth and sixteenth notes. Performance markings include "trm" (trill) and "mf" (mezzo-forte). The piece concludes with a double bar line.

Handwritten musical score on ten staves. The notation includes treble clefs, a key signature of one sharp (F#), and various musical notations such as notes, rests, and dynamic markings. The score concludes with a double bar line and a fermata on the final staff.

Dynamic markings: *tr*, *p*, *mf*, *f*, *tr*, *tr*, *mf*, *p*, *cer*, *tr*, *f*.

Other markings: A red vertical bar is present on the fifth staff. The word "cer" appears below the first staff of the lower section. The word "eres" appears below the sixth staff.

Four empty musical staves at the bottom of the page.