

2<sup>a</sup> - 1<sup>a</sup>

Grampa Sa

- 108



Polonesa

de  
A. Brill.

(on La 4)

Introd.<sup>no</sup> Mod.<sup>to</sup> || G: = H p e e f b a p

H p e e f b a p

Dim- pp

Piu<sup>mo</sup> || 3 poco rit- rit- || 2/4

L: 2/4 po. || C 2 pp

pp

Alleg<sup>to</sup> meno || 3 seco

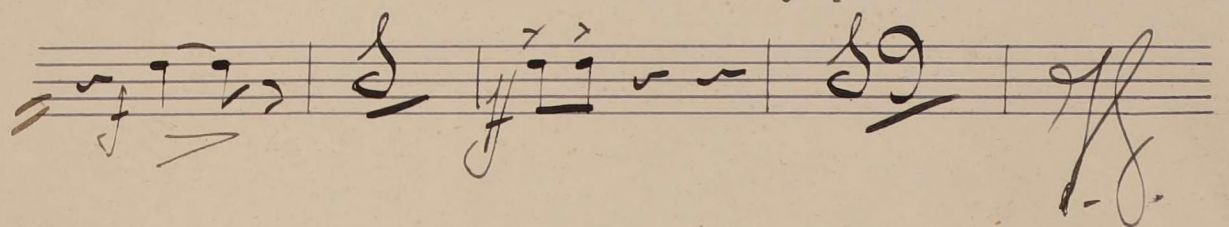
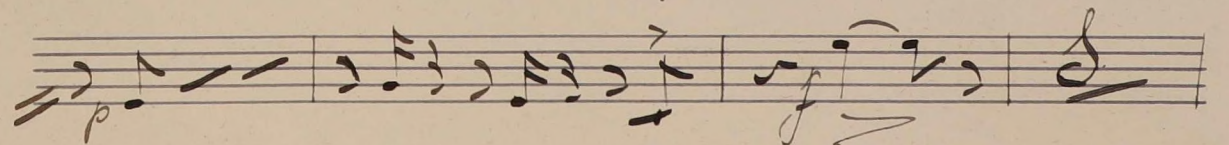
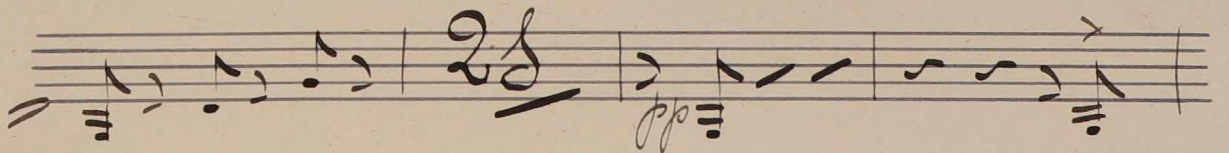
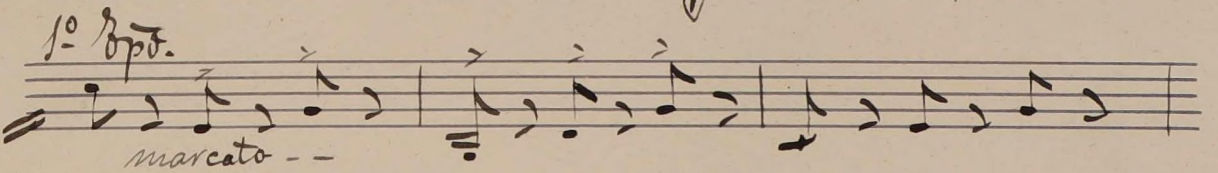
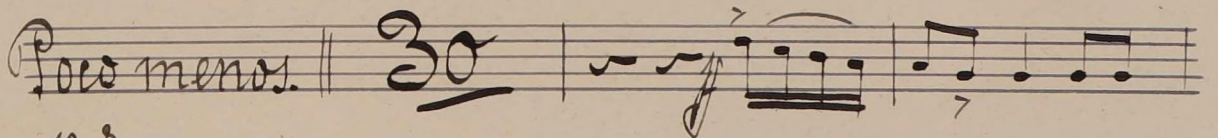
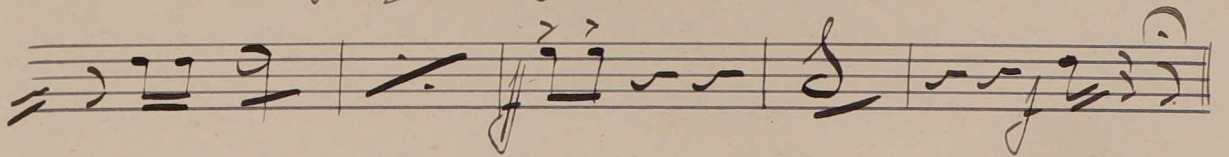
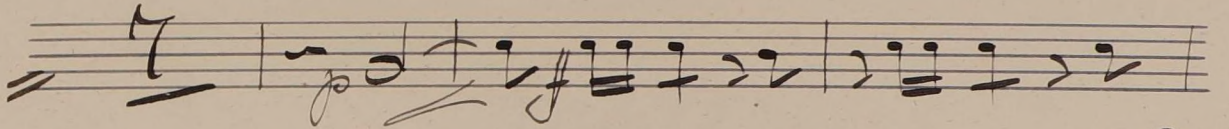
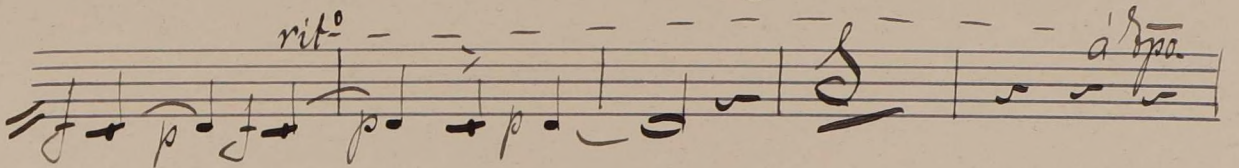
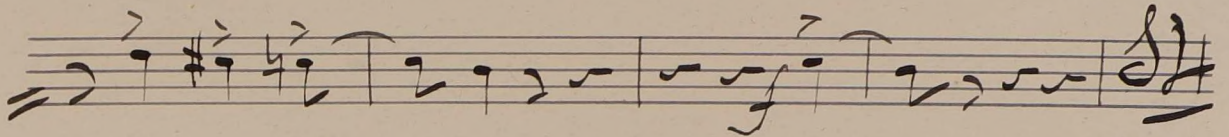
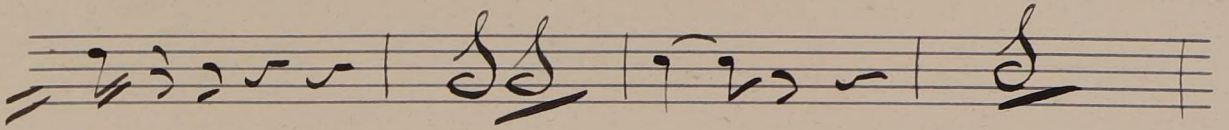
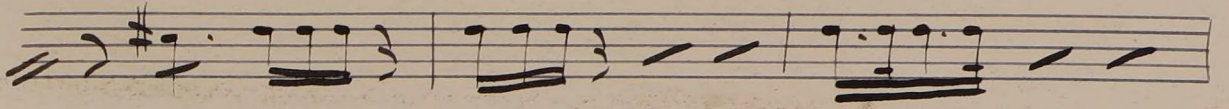
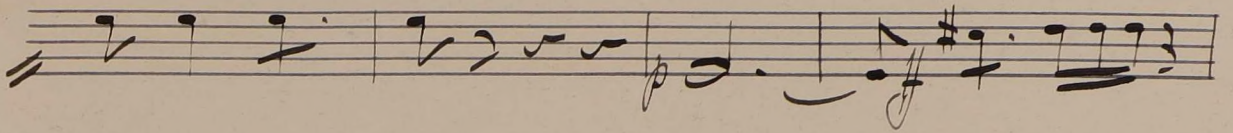
Polonesa. 6

Polonesa. 6

Polonesa. 6

Polonesa. 6

Polonesa. 6



*poco rit: a 2/8.*

*crece hasta dar  
toda la fuerza*

*f seco*

*Vivo*

*molto rit:*

*crec - - -*

*10 8 opo. Brill<sup>te</sup>*

*seco*

*accel<sup>do</sup> - - -*