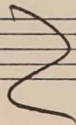


VIOLA

TRUMPET CONCERTO

J. HAYDN



~~Forisc~~

~~Torisco~~

Viola

Allegro

Handwritten musical score for Viola, featuring ten staves of music. The score is written in a key signature of three flats (B-flat, E-flat, A-flat) and a common time signature (C). The tempo is marked *Allegro*. The music includes various dynamics such as *p* (piano) and *f* (forte), and includes measure numbers 5, 10, 15, 20, 25, 30, 35, 40, and 45. The notation includes eighth notes, quarter notes, and rests, with some passages featuring sixteenth-note patterns. The score is written on ten staves, with the first staff starting with a treble clef and a common time signature. The music concludes with a final cadence on the tenth staff.

Handwritten musical score consisting of ten staves. The music is written in a key signature of three flats (B-flat, E-flat, A-flat) and a common time signature (C). The staves are numbered 50 through 105. The notation includes various note values (quarter, eighth, sixteenth notes), rests, and dynamic markings such as *f* (forte), *p* (piano), and *ff* (fortissimo). There are also slurs, accents, and a checkmark above a note on staff 3. The score concludes with the initials "V.F." at the end of the final staff.

110

Handwritten musical notation for measures 110-114. Treble clef, key signature of two flats, 4/4 time. Measures 110-114 contain quarter notes and eighth notes. A dynamic marking 'p' is present above the first measure.

115

Handwritten musical notation for measures 115-119. Treble clef, key signature of two flats, 4/4 time. Measures 115-119 contain quarter notes and eighth notes. A dynamic marking 'p' is present above the first measure. There are also some handwritten markings above the staff.

120

Handwritten musical notation for measures 120-124. Treble clef, key signature of two flats, 4/4 time. Measures 120-124 contain quarter notes and eighth notes. A dynamic marking 'p' is present above the first measure.

130

Handwritten musical notation for measures 130-134. Treble clef, key signature of two flats, 4/4 time. Measures 130-134 contain quarter notes and eighth notes. A dynamic marking 'p' is present above the first measure. A '2' is written above the second measure.

135

Handwritten musical notation for measures 135-139. Treble clef, key signature of two flats, 4/4 time. Measures 135-139 contain quarter notes and eighth notes. A dynamic marking 'p' is present above the first measure.

140

Handwritten musical notation for measures 140-144. Treble clef, key signature of two flats, 4/4 time. Measures 140-144 contain quarter notes and eighth notes. A dynamic marking 'p' is present above the first measure.

145

Handwritten musical notation for measures 145-149. Treble clef, key signature of two flats, 4/4 time. Measures 145-149 contain quarter notes and eighth notes. A dynamic marking 'p' is present above the first measure.

150

Handwritten musical notation for measures 150-154. Treble clef, key signature of two flats, 4/4 time. Measures 150-154 contain quarter notes and eighth notes. A dynamic marking 'p' is present above the first measure.

155

Handwritten musical notation for measures 155-159. Treble clef, key signature of two flats, 4/4 time. Measures 155-159 contain quarter notes and eighth notes. A dynamic marking 'p' is present above the first measure.

160

Handwritten musical notation for measures 160-164. Treble clef, key signature of two flats, 4/4 time. Measures 160-164 contain quarter notes and eighth notes. A dynamic marking 'p' is present above the first measure.

165

Handwritten musical notation for measures 165-169. Treble clef, key signature of two flats, 4/4 time. Measures 165-169 contain quarter notes and eighth notes. A dynamic marking 'p' is present above the first measure.

170

Handwritten musical notation for measures 170-174. Treble clef, key signature of two flats, 4/4 time. Measures 170-174 contain quarter notes and eighth notes. A dynamic marking 'p' is present above the first measure.

I I

And^{te}

6/8

p stacc

leg.

mf

p

5

10

15

20 ✓

25

30

35

40

45

50

III

Allegro

2
4 *p*

5

10

15

20

25

30 *fz*

35

40

45 *p*

50

55

60

65

Handwritten musical notation on a five-line staff. The key signature has two flats (B-flat and E-flat). The music consists of eighth and sixteenth notes. A measure number '70' is written above the staff.

Handwritten musical notation on a five-line staff. It begins with a large '2' indicating a second ending. The music features half notes and quarter notes. A measure number '75' is written above the staff.

Handwritten musical notation on a five-line staff. It features eighth notes and quarter notes. A measure number '85' is written above the staff.

Handwritten musical notation on a five-line staff. It features quarter notes and rests. A measure number '90' is written above the staff.

Handwritten musical notation on a five-line staff. It features eighth notes and quarter notes. Measure numbers '95' and '100' are written above the staff.

Handwritten musical notation on a five-line staff. It begins with a large '2' indicating a second ending. The music features half notes and quarter notes. A measure number '105' is written above the staff.

Handwritten musical notation on a five-line staff. It features quarter notes and eighth notes. Measure numbers '110' and '115' are written above the staff.

Handwritten musical notation on a five-line staff. It begins with a large '3' indicating a third ending. The music features quarter notes and eighth notes. A measure number '120' is written above the staff.

Handwritten musical notation on a five-line staff. It features eighth notes and quarter notes. Measure numbers '125' and '130' are written above the staff.

Handwritten musical notation on a five-line staff. It features eighth notes and quarter notes. Measure numbers '135' and '140' are written above the staff.

Handwritten musical notation on a five-line staff. It features quarter notes and eighth notes. A measure number '145' is written above the staff.

Handwritten musical notation on a five-line staff. It features eighth notes and quarter notes. Measure numbers '150' and '155' are written above the staff.

165

170 175

180

185

190 195

200

205

210 215

220

225 230 235 240

245

250

255

260

270

275

280

285

290

295