



Siebente Symphonie.

E dur.

Posaune III.

I. Satz.

Allegro moderato. (M. $\text{♩} = 58$.)

Anton Bruckner.



Viol. I. 24 A 1 2 3 mf f cresc. ff

7 B Ruhig. (M. $\text{♩} = 108$.) 13 14 15 16 pp

25 C D 7 Fl. I. poco a poco cresc. 8 9 10 11 p poco

etwas belebend a poco cresc. ff

riten. E Ruhig. a tempo 12 1 F 3 f cresc. sempre

f cresc. ff

16 H Ruhig. 2 pp a 4 3 a 2

a 2 1 1 2 J 8 K 1 2 pp ritard a tempo 1 2

3 4 p mf cresc. f dim. p 15

L Ruhig. (M. $\text{♩} = 96$.) M Tempo I. 14 2 ff

N 32 O 22 P 16 ff

Posaune III.

Q 16 R 4 Fl. I u. II. *poco a poco cresc.* S *f*

etwas gedehnt a tempo
dim. 3 *p poco a poco cresc.*

T *ruhig* *ff* dim. 8 *f* U *ff*

V 4 *f* *ff*

W *Sehr feierlich.* X *pp*

Y *poco a poco cresc.* *marc.* *cresc. sempre cresc.* Z *ff*

II. Satz. Adagio.

Sehr feierlich und langsam. (M. ♩ = 63.)

Vol. *mf* *dim.* 4 A 10 B *p* *Basso.*

3 4 *cresc.* 5 6 *ff* 1 C 6

p cresc. *ff*

D Moderato. (M. ♩ = 92.) Tempo I. 8 E 8 F 24 G 1 2 3 4 2 *p* *dim.* H 8 J 8 K 4

Tuba. *p* *cresc.* *dim.*

L 10 M *Basso.* 1 *f* N 1 *mf*

Posaune III.

cresc. *ff* *ritard.* **0** **1**

P Moderato. **R** 8 **S** Tempo I. **U**
Sehr langsam. *p dim.* *p* *cresc.*

mf *cresc.* *ff* *cresc.* *ff* **V** **W**

3 **X** 8 **Y** 14 **Z** 13

III. Satz. Scherzo.

al repetir 2 a vez 4 y Salta a **G**
 Sehr schnell. (M. $\text{♩} = 80$.)

28 **A** 1 2 3 4 6 **B** 8
p Vcl. e Basso *f*

f *cresc. sempre* *ff* *ff* **8**

C 7 *ff*

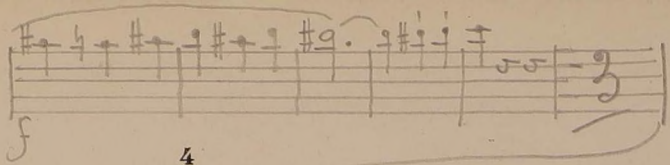
3 **D** 32

E *Etwas ruhiger.* **10** **11** **12** **1** **2** **3** **16** **F** 16 **17**
 Tromp. I. *f* *p* *cresc.* Tromp. I.

18 **19** **20** *ff* **1** **2** **3** **4** **4** **G** 24 **H** 8

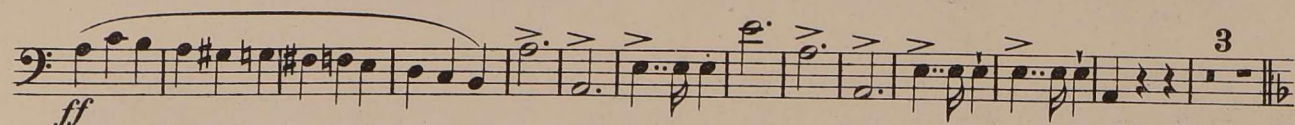
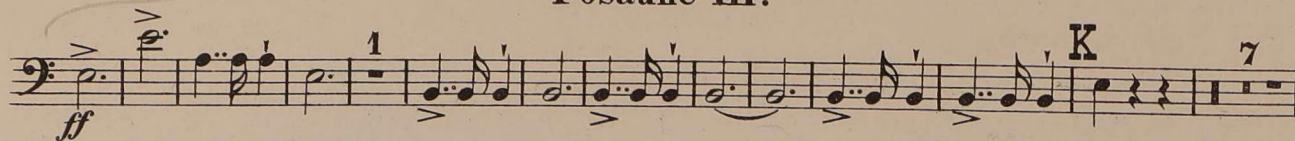
J 8 **9** **10** *f* **3**

V. T. Rapido

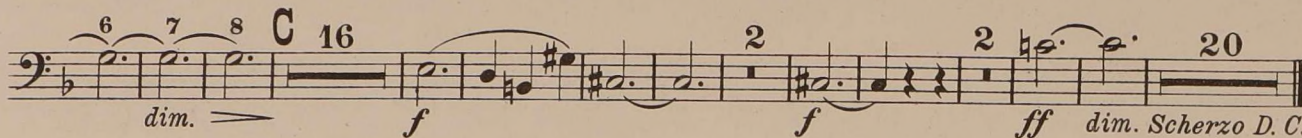
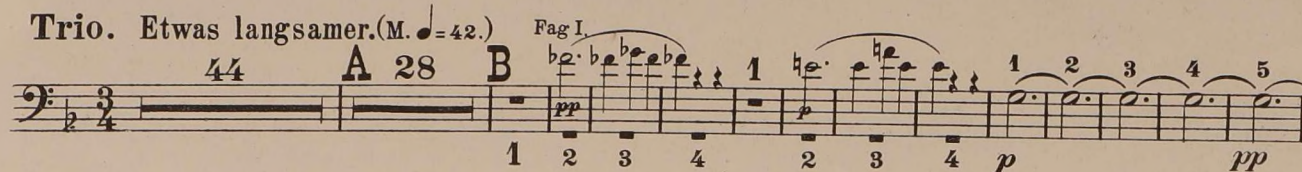


4

Posaune III.



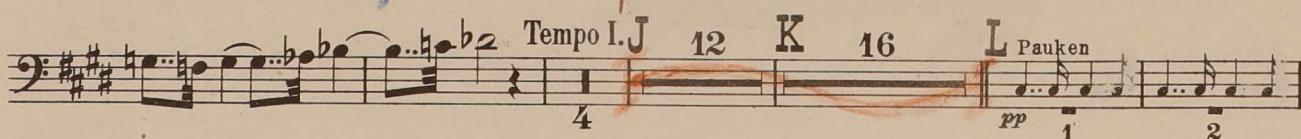
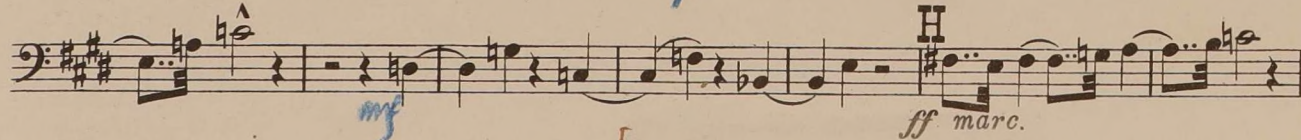
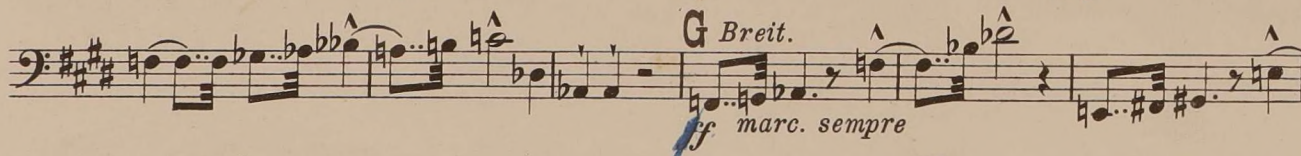
Trio. Etwas langsamer. (M. ♩ = 42.)



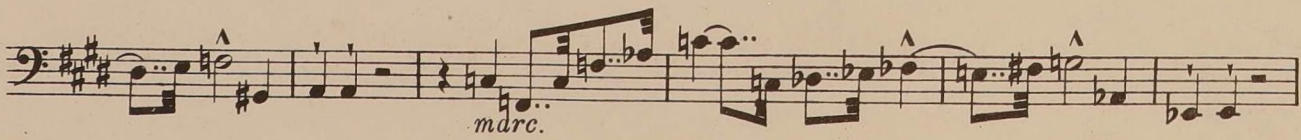
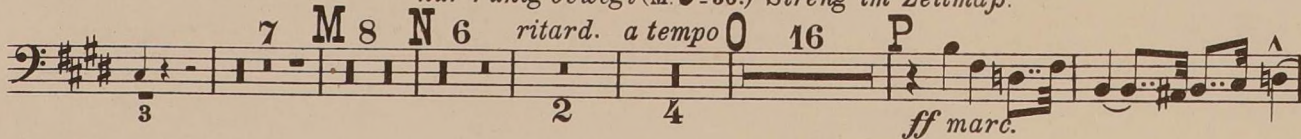
los 4 primeros y salta a la 6

IV. Satz. Finale.

Bewegt doch nicht schnell. (M. ♩ = 63.)



nur ruhig bewegt (M. ♩ = 56.) Streng im Zeitmaß.



Posaune III.

Breit und wichtig.

ff

ff

immer breiter

ff

R

Tempo I. (M. ♩ = 52.)

16

18

U

Tempo I.

poco a poco cresc.

1

2

3

ritard.

Solo

ff marc.

a tempo

4

ff marc. sempre

V

Tempo I. *riten.*

6

ff marc.

a tempo

6

dim.

6

W

ritard.

ff

X

a tempo

Y

7

f marc. sempre

8

cresc.

ff

Sehr breit.

11

ff marc.

Z

Tempo I. (anfangs noch sehr ruhig)