

Fagot IV.

BENVENUTO CELLINI -

(Overtura)

Berlioz //

All^o deciso con impeto

Larghetto

9: #

9: #

9: #

9: #

⑤ 9: #

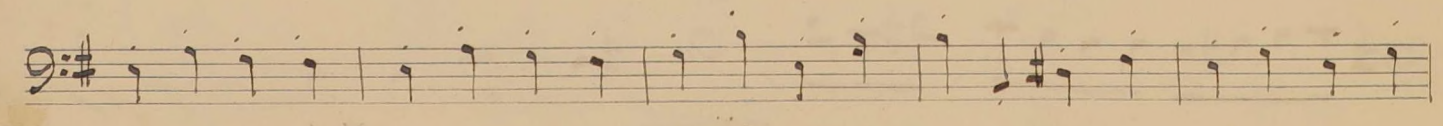
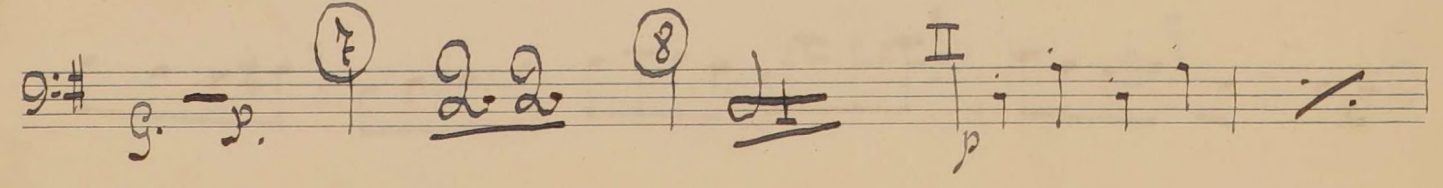
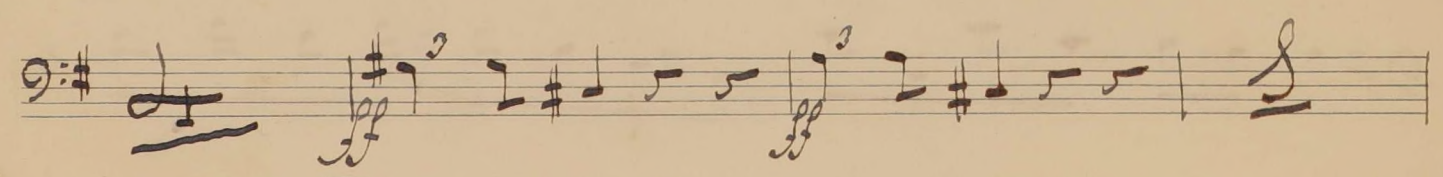
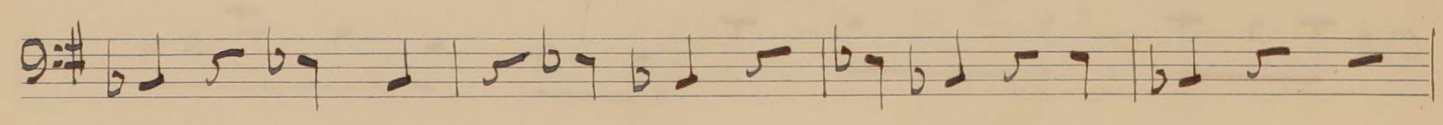
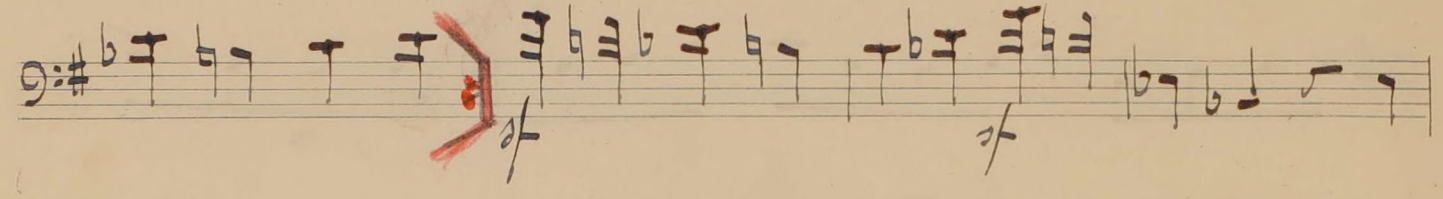
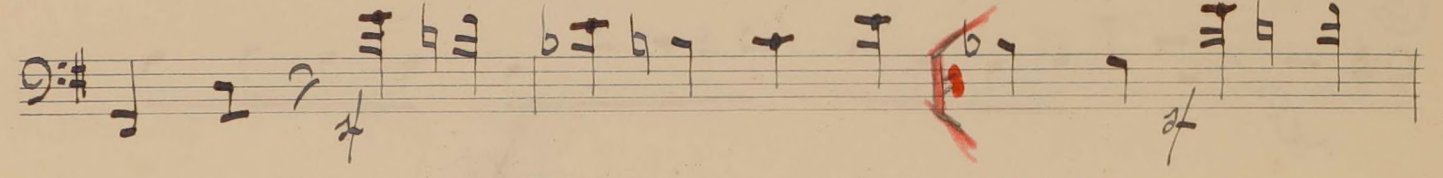
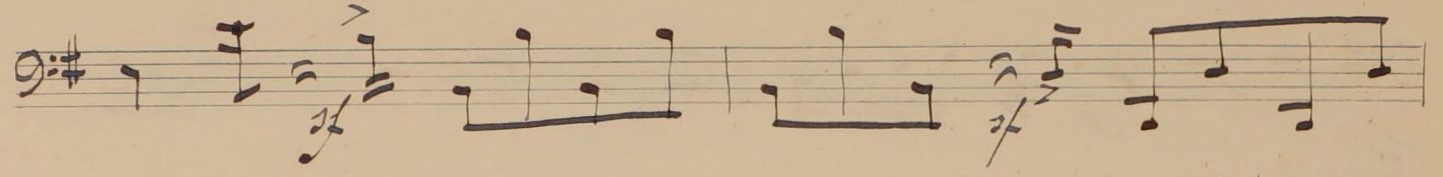
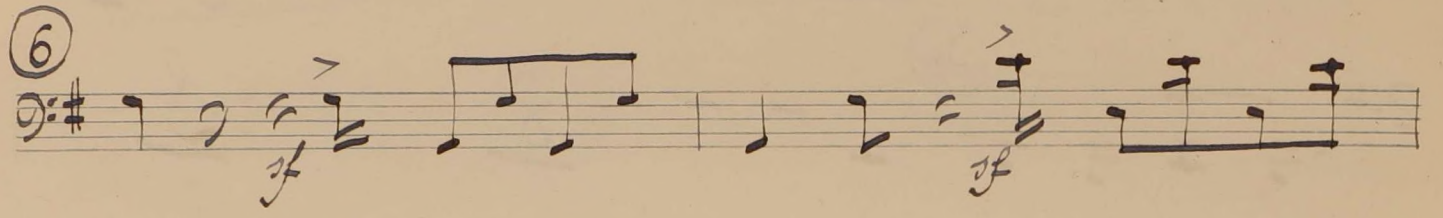
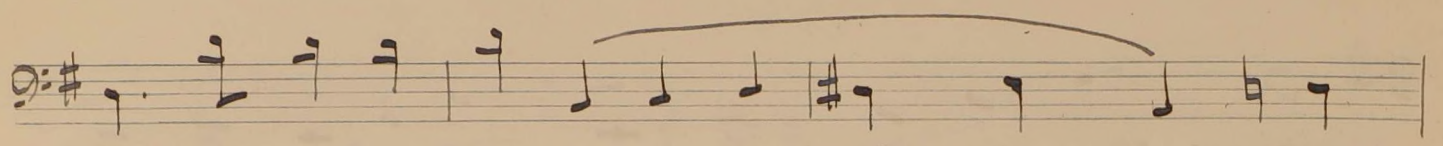
9: #

9: #

9: #

9: #

9: #



Handwritten musical notation on a single staff, featuring a treble clef, a key signature of one sharp (F#), and a series of eighth and sixteenth notes.

Handwritten musical notation on a single staff, featuring a treble clef, a key signature of one sharp (F#), and a circled measure number '9'.

Handwritten musical notation on a single staff, featuring a treble clef, a key signature of one sharp (F#), and a triplet of eighth notes.

Handwritten musical notation on a single staff, featuring a treble clef, a key signature of one sharp (F#), and a triplet of eighth notes.

Handwritten musical notation on a single staff, featuring a treble clef, a key signature of one sharp (F#), and a circled measure number '10'.

Handwritten musical notation on a single staff, featuring a treble clef, a key signature of one sharp (F#), and a circled measure number '10'.

Handwritten musical notation on a single staff, featuring a treble clef, a key signature of one sharp (F#), and a circled measure number '10'.

Handwritten musical notation on a single staff, featuring a treble clef, a key signature of one sharp (F#), and a circled measure number '11'.

Handwritten musical notation on a single staff, featuring a treble clef, a key signature of one sharp (F#), and a circled measure number '12'.

Handwritten musical notation on a single staff, featuring a treble clef, a key signature of one sharp (F#), and a circled measure number '12'.

Handwritten musical notation on a single staff, featuring a treble clef, a key signature of one sharp (F#), and a circled measure number '12'.

9: # 5 II *Solo* *cris*

13 IV *f*

14 *f*

15 *dim* *ff*

9: # *animato* 16

9: # *ff*

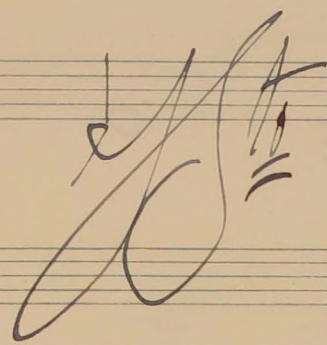
9: # *f*

9: # *f*

9: # *f*

9: # 17 *ff*

9: # *f*



Handwritten musical notation on a single staff, G major key signature, featuring a sequence of notes and rests.

Handwritten musical notation on a single staff, G major key signature, featuring a sequence of notes and rests.

Handwritten musical notation on a single staff, G major key signature, featuring a sequence of notes and rests, including a circled measure number '20' and a dynamic marking 'ff'.

Handwritten musical notation on a single staff, G major key signature, labeled 'Cello', featuring a sequence of notes and rests.

Handwritten musical notation on a single staff, G major key signature, labeled 'Basson' and 'eres molto', featuring a sequence of notes and rests.

Handwritten musical notation on a single staff, G major key signature, featuring a sequence of notes and rests, ending with a large scribble.

Empty musical staff.

Empty musical staff.

Empty musical staff.

Empty musical staff.