

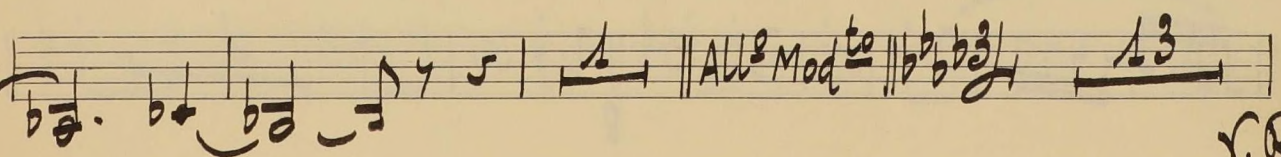
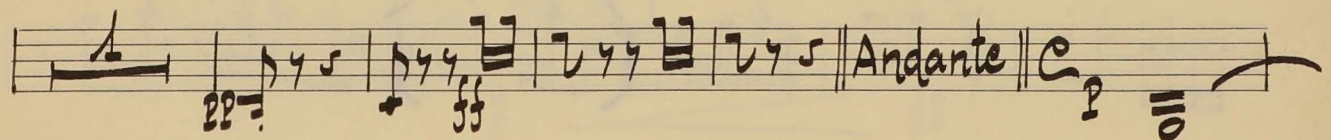
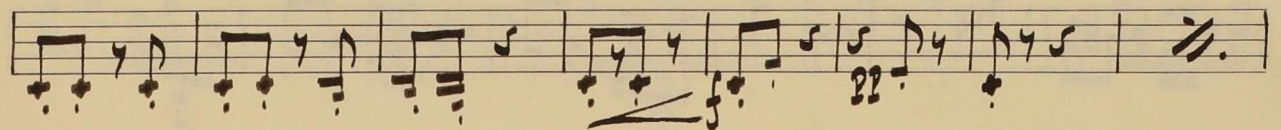
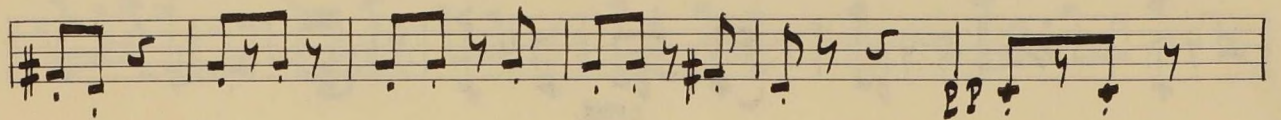
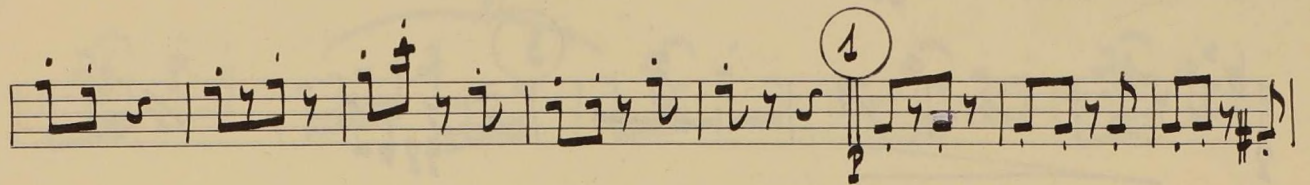
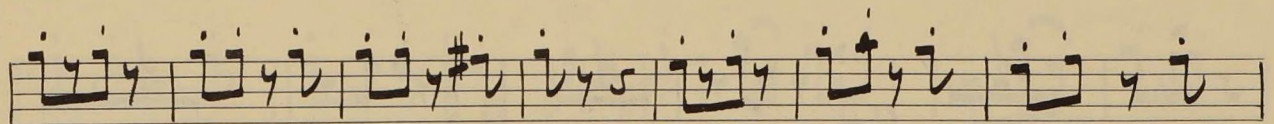
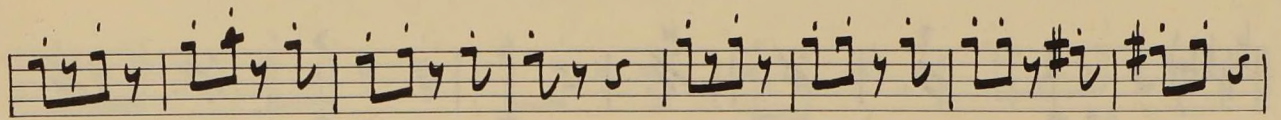
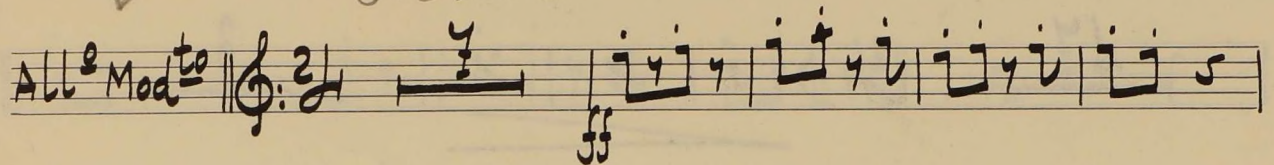
# EL TAMBOR DE GRANADEROS

"PRELUDIO"

R. CHAPI

CLARINETE-2<sup>o</sup> en La

EN LA  
en La



r.R.

Musical staff with treble clef, key signature of two flats, and a 6-measure rest.

Musical staff with a 6-measure rest, a circled '2' above a note, and a 10-measure rest.

Musical staff with a 14-measure rest, a 2-measure rest, and a 3-measure rest.

Musical staff with a key signature change to two sharps, a *pp* dynamic marking, and various rests.

Musical staff with a *ff* dynamic marking and a 1-measure rest.

Musical staff with a 3-measure rest, a circled '3' above a note, and a *pp* dynamic marking.

Musical staff with a *cresc.* marking and various notes.

Musical staff with a *ff* dynamic marking and various notes.

Musical staff with various notes and rests.

Musical staff with a *p* dynamic marking and a 1-measure rest.

Handwritten musical notation on a five-line staff, starting with a treble clef, a key signature of two flats (B-flat and E-flat), and a common time signature (C). The notation consists of eighth and sixteenth notes with stems.

Handwritten musical notation on a five-line staff, continuing the piece with various rhythmic values and stems.

Handwritten musical notation on a five-line staff, featuring a series of rhythmic patterns.

Handwritten musical notation on a five-line staff, showing a continuation of the melodic and rhythmic lines.

Handwritten musical notation on a five-line staff, including a key signature change to three flats (B-flat, E-flat, and A-flat) indicated by a double bar line and a new key signature.

Handwritten musical notation on a five-line staff, featuring a large slur over a group of notes and a key signature change to one flat (F major or D minor).

Handwritten musical notation on a five-line staff, including a 3/4 time signature change and a key signature change to two flats (B-flat and E-flat).

Handwritten musical notation on a five-line staff, featuring a repeat sign (double bar line with dots) and various rhythmic patterns.

Handwritten musical notation on a five-line staff, including a key signature change to one flat (F major or D minor) and a 2/4 time signature change.

Handwritten musical notation on a five-line staff, ending with a repeat sign and the letters 'F. R.' at the end of the line.

A handwritten musical score consisting of ten staves. The notation includes various rhythmic values such as eighth and sixteenth notes, rests, and beams. There are several dynamic markings: 'ff' (fortissimo) appears at the beginning of the fifth and eighth staves, and 'p' (piano) appears at the beginning of the sixth and ninth staves. A circled '4' is written above the second staff. A double bar line with repeat dots is used in the fourth and ninth staves. The manuscript is written in black ink on aged, yellowish paper.

p

