

4

VIOLA

Orquesta Sinfónica de Madrid

Núm - - 12

LA DAMNATION DE FAUST

BERLIOZ





ALTO.

Pizz. Follets ca pri ci eux vos lueurs malfai san tes vont char
 Aus sempf und moor schaff irr lich ter euch hier zu san men

mf Pizz.

mer une enfant et l'amener à nous au nom du diable en danse
 luck is ches licht ver blende dieses kind! Ins? Ten fel nam en hup fet!

Pizz. *f > p*

Et vous marquez bien la ca den ce ménétriers d'en fer ou je vous éteins tous
 wein eins nur dem krei se ent schlup fet, nicht tanz um dieses Haus, blas ich euch al te aus!

f ff

Allto 14 *Filt.*

Muet
des follets.

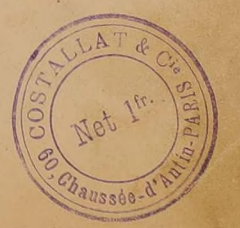
14 *p*

mf *mf > p*

p sf p *Pico. f* *Pizz.*

f sf *mf Arco.*

p sf *mf* *p*



ALTO.

Handwritten numbers in blue boxes: 5, 6, 7, 8, 9.

ff *p* Soli.

f *mf* *sf* *p* *sf* *p* *sf* *p* *sf* *p* *sf* *p*

sf *p* *Dim.* *p* *Cresc.* *ff* *pp* *pp*

pp *Cresc.* *f* *ff*

2 *pp* *Pizz.* *Arco.* *pp* *Pizz.* *Arco.* *ff* *Pizz.*

mf *Arco.* *Pizz.* *f* *p*

Mod^{to} *Arco.* *Presto.*

Mod^{to} *Presto.* *ff* *pp* *ff*

pp *ff* *f* *ff*

Fine

main - te - nant chan - tons a cet - te bel - le u -
 Ietzt hier wir las sen ein mo - ra - lisch

f

- ne chan - son mo - ra - le pour la per - plus sù - re - ment
 lied um ho - ren fur wir wir be tho

All^o moderato.

All^o Mour^t de valse. Arpege en glissant le pouce sur les 4^e Cordes.

Sérénade de Méphis:
 et chœur
 de follets.

Pizz. p *f* *p* *f* *f* *p* *f*

ff *p*

Cresc. *f* *p* *f* *p* *f*

p *f* *p* *f* *p* *f*

Cresc. *ff* *ff*

2

Viola

--12

VALE DES SYLPHES.

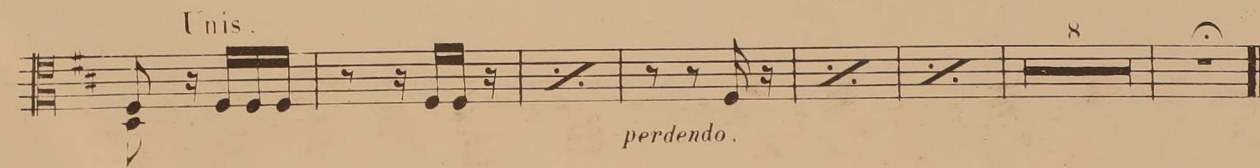
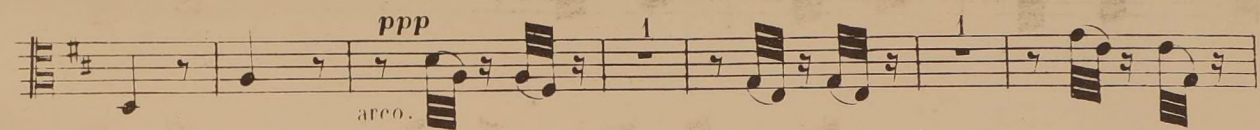
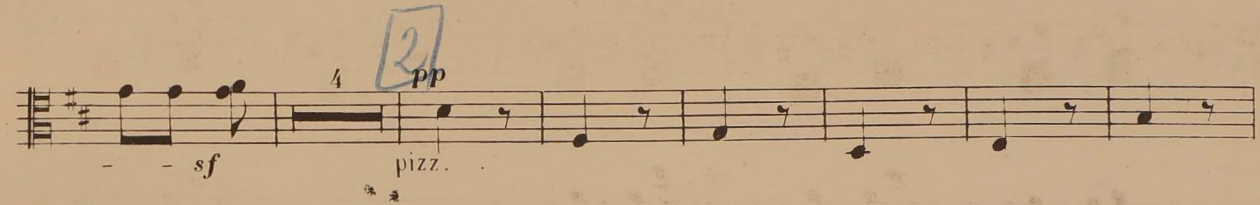
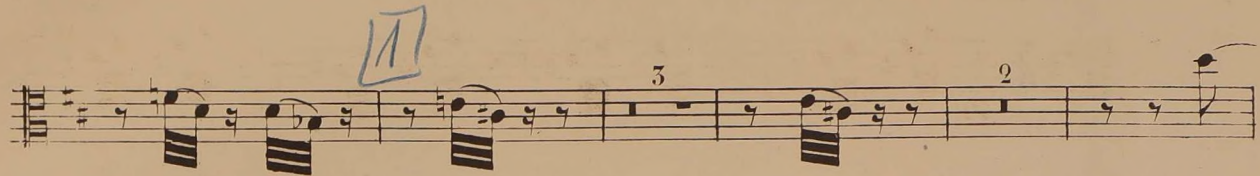
BERLIOZ.

Sourdines .

ALTO.

All^o mouv^t de Valse.

pp



Viola

--12



All^o marcato.
Marche hongroise.

6 1 2

mf *Pizz.* *mf* *f* *Arco.*

Pizz. *Sempre pizz.*

p *f* *Arco.*

p *f* *Arco.*

1^o 2^o 6

p *f*

Handwritten number 20 in a blue box.

Musical notation for measures 19 and 20. Measure 19 is marked with a first ending bracket and measure 20 with a second ending bracket. Dynamics include *p* and *f*.

Handwritten number 21 in a blue box.

F

Musical notation for measures 21 and 22. Measure 21 starts with a first ending bracket. Dynamics include *p* and *f*.

Handwritten number 22 in a blue box.

G

Musical notation for measures 23 and 24. Measure 23 starts with a first ending bracket. Dynamics include *p*, *f*, and *sf*.

Handwritten number 23 in a blue box.

accelerando

Musical notation for measures 25 and 26. Measure 25 starts with a first ending bracket. Dynamics include *p* and *f*.

Handwritten number 24 in a blue box.

Divisi.

Musical notation for measures 27 and 28. Measure 27 starts with a first ending bracket. Dynamics include *p* and *f*.

Handwritten number 25 in a blue box.

Divisi.

Musical notation for measures 29 and 30. Measure 29 starts with a first ending bracket. Dynamics include *p* and *f*.

Divisi.

4606 R