

"SLEEPING BEAUTY"

Suite

P. Tschaikowsky, Op. 66a

№ 1. INTRODUCTION. LA FÉE DES LILAS.

Corno I in F.

Allegro vivace.

fff

fff

fff

Andantino.

12 Ob. I.

13 14

3 1 1

pp p mf mf

Più mosso.

mf cresc. f ff cresc. ffff

fff rit. molto p

Andante sostenuto.

19 Viol. I, II, III. Sons Bouches

20 p pp

6

EDWIN F. KALMUS
PUBLISHER OF MUSIC
SCARSDALE, N. Y.

No 2. Adagio. Pas d'action.

Corno I in F.

Andante.

pp p mp mf f di - mi - nu -

Adagio maestoso.

- en - do pp f cresc.

ff f cresc. ff f

1

poco stringendo

p cre - - -

- scen - do f

Tempo I.

ff riten. f

f mp

mf mf fff

Corno I in F.



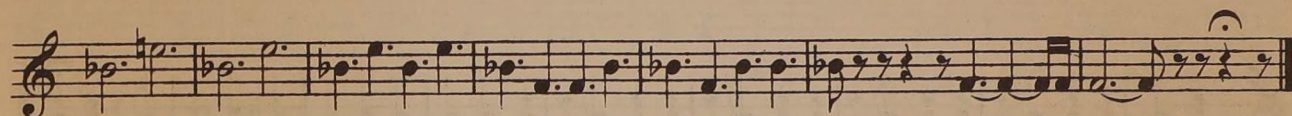
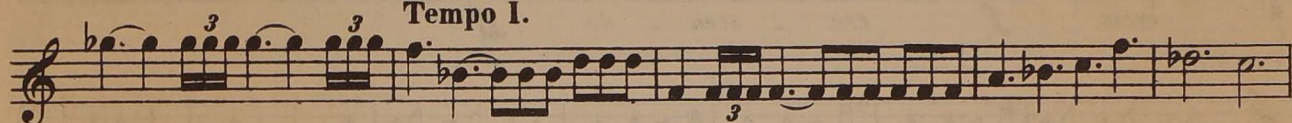
Molto sostenuto, quasi più Andante.

poco stringendo



fff

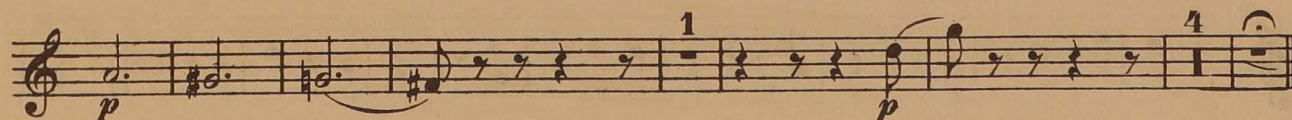
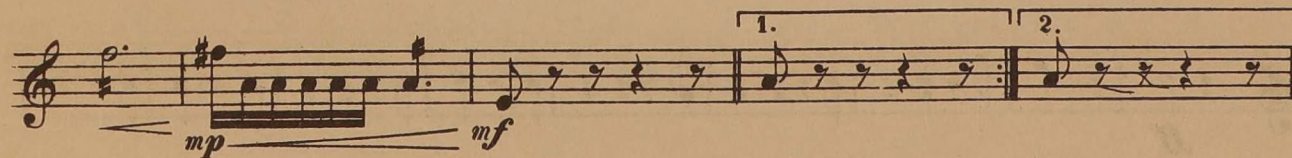
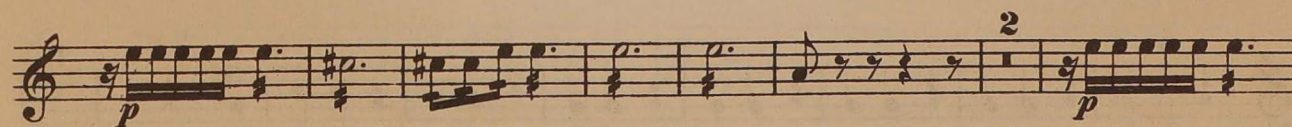
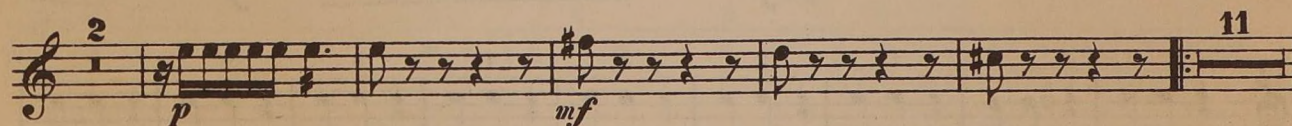
Tempo I.



Nº 3. Pas de caractère. *TACET.*

Nº 4. Panorama.

Andantino.



No 5. Valse.

Corno I in F.

Allegro. (Tempo di Valse.)

ff *p* cre - scen - do *mp* cre - scen - do *mf*

cresc. *f* cre - scen - do *ff*

1 2 3 4 5 6 7 8 9
p

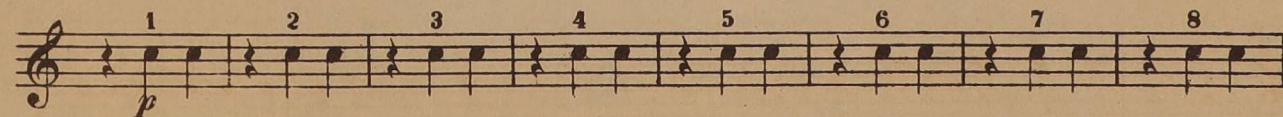
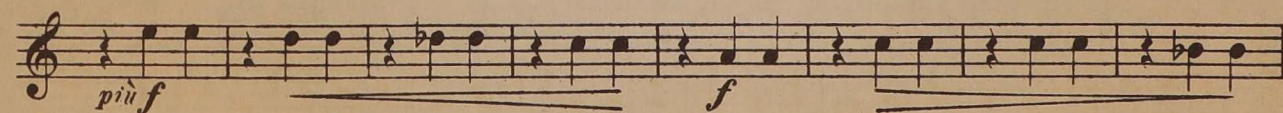
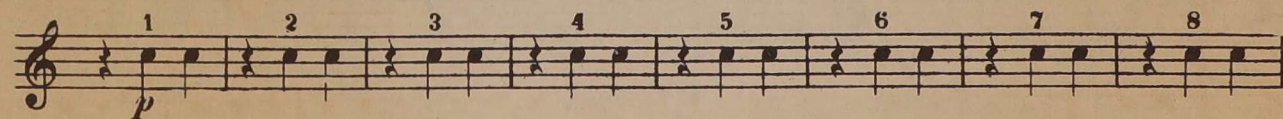
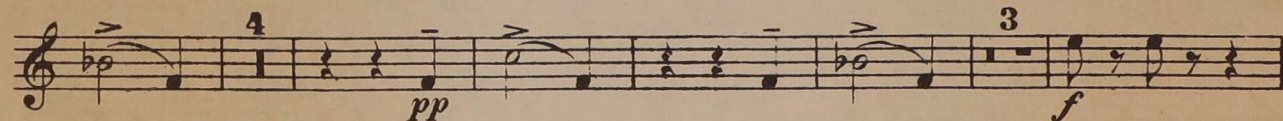
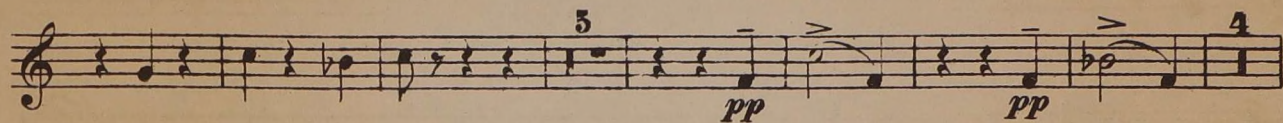
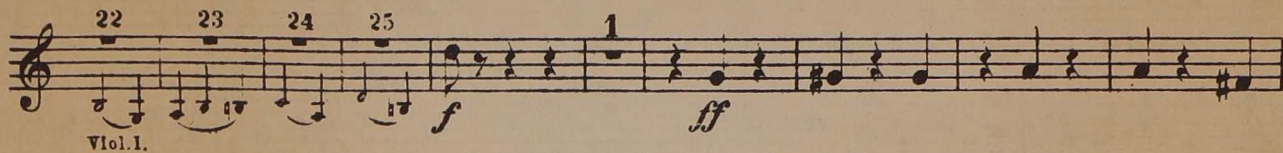
10 11 12
più f *f*

1 2 3 4 5 6 7
p

8 1
f *ff*

ff

Corno I in F



Corno I in F.

