

TROMBON

Orquesta Sinfónica de Madrid

Núm. ---2

PARSIFAL PRELUDIO Y FINAL

WAGNER

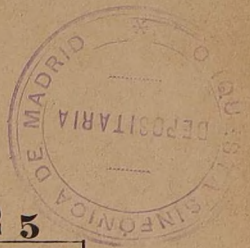


PARSIFAL

Vorspiel (mit angefügtem Schluss des III. Aufzuges.)

BASS = POSAUNE.

R. WAGNER.



1 Sehr langsam.

5 8 2 5

pp pp a6

8 pp p

1 2 ff ff

sehr gehalten. ritard. dimin.

4 4 6

9 ff ff ff ff ff ff ff ff ff dim. p

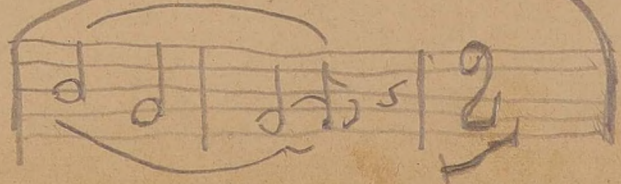
ten. 4 ten. 6 4 1 p

pp pp pp p

piu p piu p pp

7 A. Schluss für Aufführungen des Vorspiels allein.

1 3 pp pp



Parsifal

Schluss des III Aufzuges

B. Bühnenschluss des Vorspiels

Handwritten musical score for Parsifal, Act III, Stage Closing of the Prelude. The score consists of seven staves of music. The first staff begins with a treble clef, a key signature of one flat, and a common time signature. It features a *pp* dynamic marking. The second staff continues the melody with a *pp* marking. The third staff includes a *pp* marking and a *p* marking. The fourth staff has a *p* marking and a *pp* marking. The fifth staff features a *pp* marking and a *pp* marking. The sixth staff has a *p* marking. The seventh staff concludes with a *dim* marking and a *p* marking. Measure numbers 290 through 295 are indicated above the staves.