

TROMPA 4^{ta}

Orquesta Sinfónica de Madrid

Número 235

UNE NUIT SUR LE MONT CHAUVÉ

MOUSSORGSKY



Trompa $\text{J}^{\#}$ ta

Une Nuit sur le Mont

Chauvi //

// Moussorasku //

Handwritten musical notation on a single staff, featuring eighth and sixteenth notes with accents and a sharp sign.

Handwritten musical notation on a single staff, including a 6/8 time signature and the instruction *mf cres*.

Handwritten musical notation on a single staff, showing a series of notes with plus signs above them.

Handwritten musical notation on a single staff, featuring notes with plus signs and a fermata.

Handwritten musical notation on a single staff, including a treble clef, a sharp sign, and some crossed-out notes.

Handwritten musical notation on a single staff, showing a series of notes with a fermata at the end.

Handwritten musical notation on a single staff, featuring a series of notes with the instruction *cres* above.

Handwritten musical notation on a single staff, showing a series of notes with the instruction *cres* above.

Handwritten musical notation on a single staff, including a treble clef, a sharp sign, and a "G" chord symbol.

Handwritten musical notation on a single staff, featuring notes with accents and the instruction *marcato*.

Handwritten musical notation on a five-line staff. It begins with a treble clef and a key signature of one sharp (F#). The melody consists of eighth and quarter notes, with a fermata over a quarter note. A circled 'o' is written above the first measure.

Handwritten musical notation on a five-line staff, continuing the melody from the previous staff. It includes a fermata and a circled 'o' above the first measure. The staff ends with a double bar line and the number '11' written below it.

Handwritten musical notation on a five-line staff. It starts with the instruction "piu sostenuto" and a double bar line. The tempo is marked with a '2' in a circle. The notation includes a half note with a sharp sign and a quarter note with a sharp sign.

Handwritten musical notation on a five-line staff. It features a double bar line with the number '10' below it, followed by a measure with a sharp sign and a quarter note. The staff continues with a fermata and a circled 'o' above a measure.

Handwritten musical notation on a five-line staff. It includes a fermata and a circled 'o' above a measure. The notation consists of quarter and eighth notes with various accidentals.

Handwritten musical notation on a five-line staff. It begins with a key signature change to one flat (Bb) and a double bar line with the number '1' below it. The notation includes a fermata and a circled 'o' above a measure.

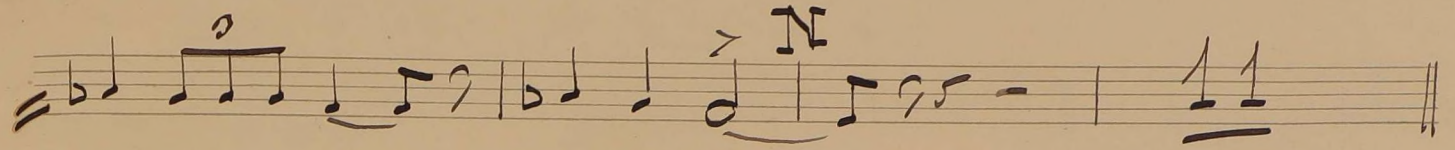
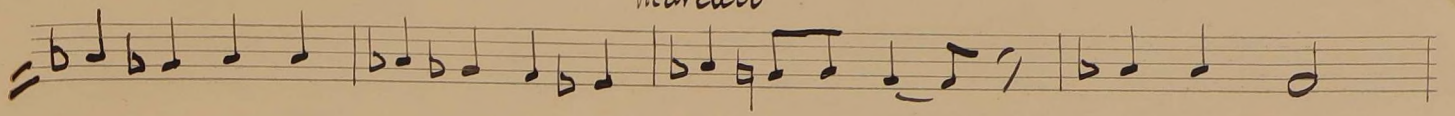
Handwritten musical notation on a five-line staff. It includes a double bar line with the number '1' below it. The tempo instruction "L Tempo! All' fuoco" is written above the staff. The notation consists of quarter and eighth notes.

Handwritten musical notation on a five-line staff. It begins with a treble clef and a key signature of one flat. The notation includes a fermata and a circled 'o' above a measure. The dynamic marking "mf" is written below the staff.

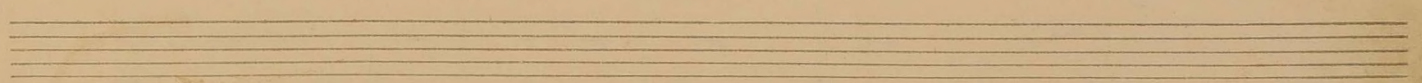
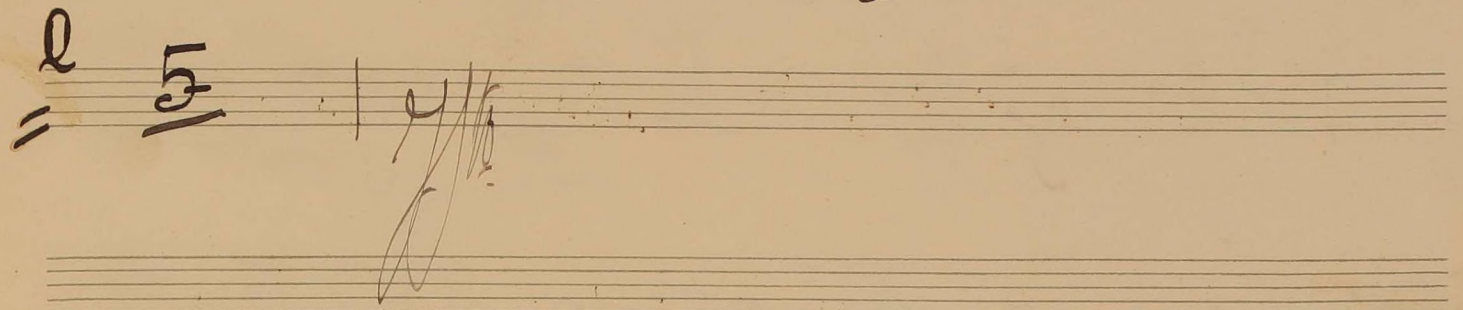
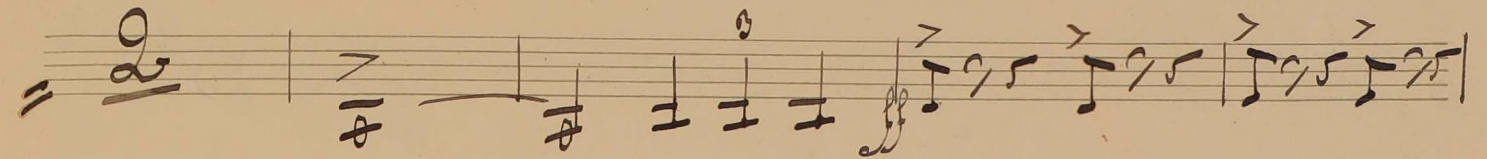
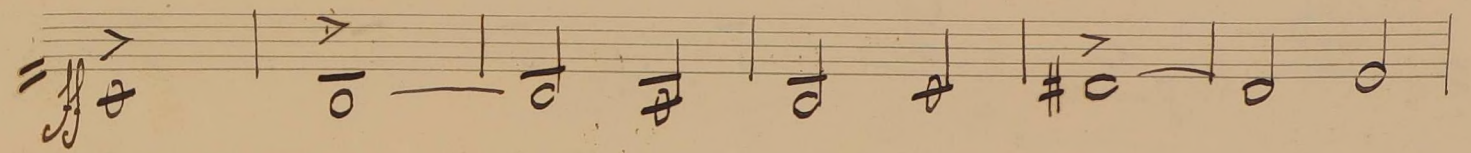
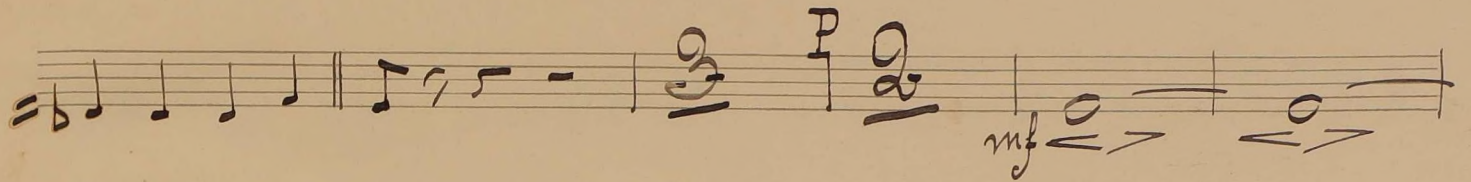
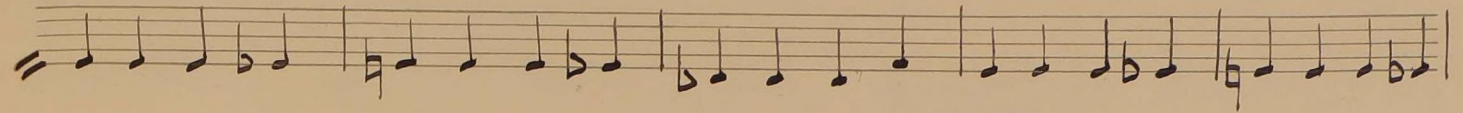
Handwritten musical notation on a five-line staff. It includes a double bar line with the number '1' below it. The notation consists of quarter and eighth notes with various accidentals.

Handwritten musical notation on a five-line staff. It begins with a treble clef and a key signature of one flat. The notation includes a double bar line with the letter 'M' above it. The dynamic marking "ff" is written below the staff.

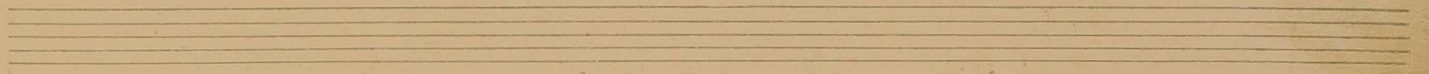
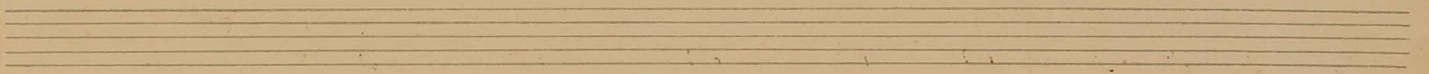
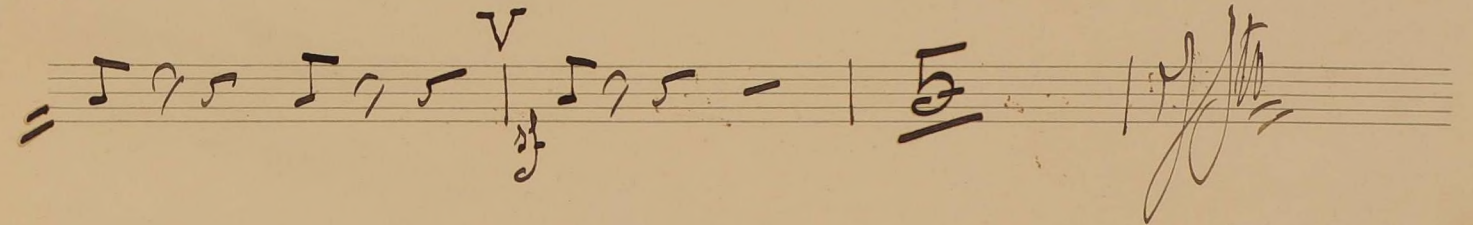
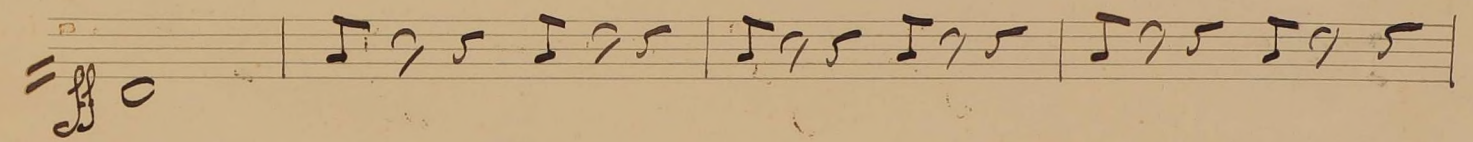
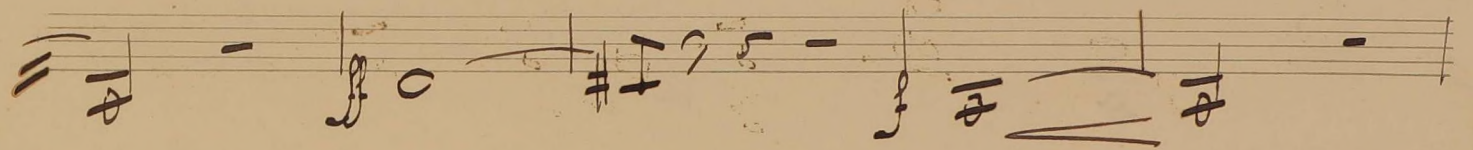
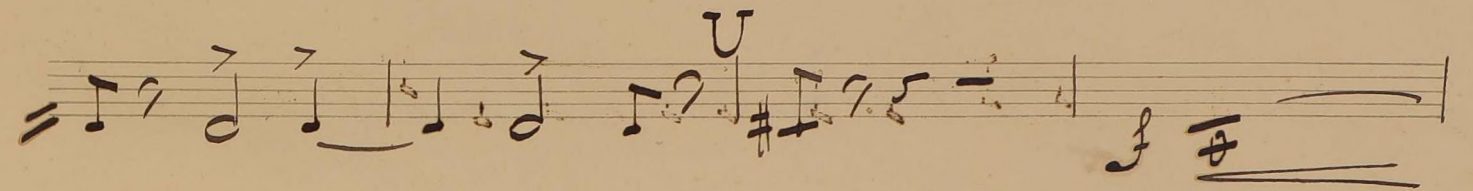
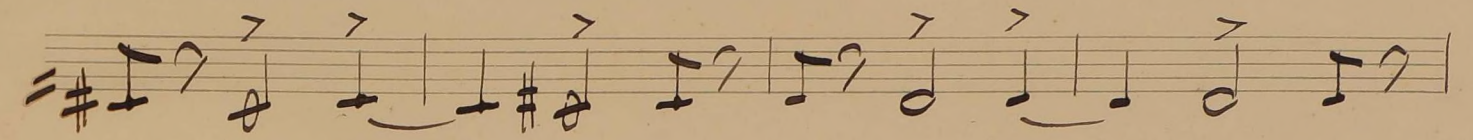
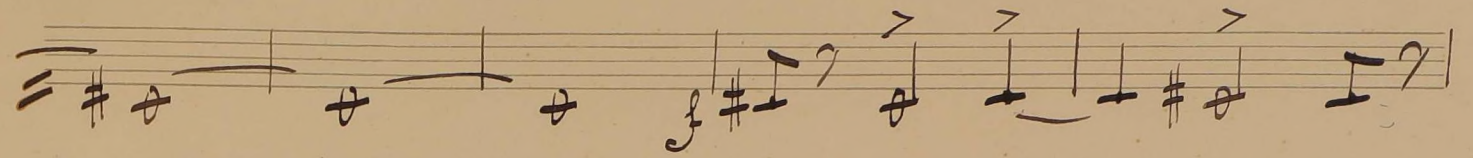
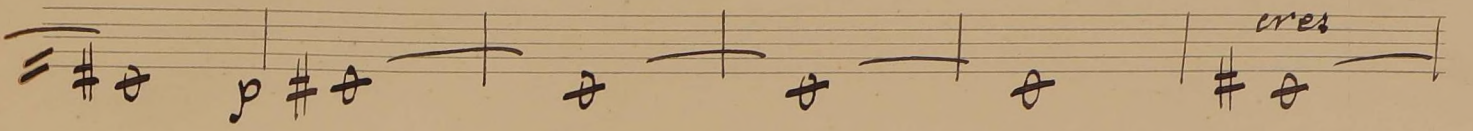
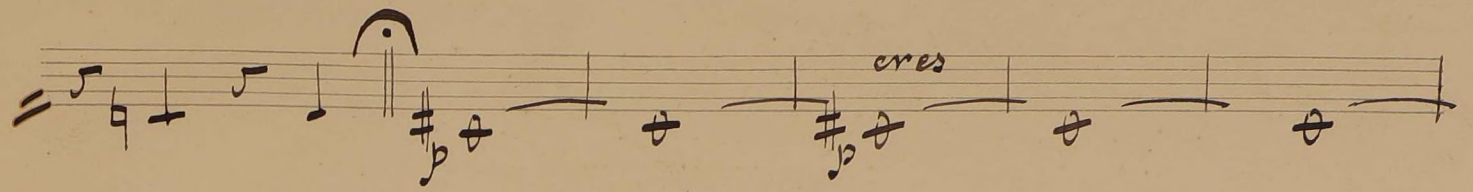
marcato



O pesante



This image shows a page of handwritten musical notation on ten staves. The notation includes various rhythmic values, accidentals, and dynamic markings. The first staff begins with a treble clef, a key signature of one sharp (F#), and a common time signature (C). It features several measures with notes, rests, and accents. The second staff continues the melody with similar notation. The third staff includes a dynamic marking of *ff* (fortissimo) and a marking *R₇* above a note. The fourth and fifth staves continue the melodic line with various rhythmic patterns and accidentals. The sixth staff features a dynamic marking of *mf* (mezzo-forte) and the word *cres* (crescendo) written below the notes. The seventh staff begins with a dynamic marking of *ff* and includes some rests. The eighth staff continues with notes and rests. The ninth and tenth staves conclude the page with notes, rests, and a final dynamic marking of *ff*. The handwriting is in dark ink on aged, slightly yellowed paper.



W Poco meno mosso //

Handwritten musical notation on a single staff, featuring a treble clef, a key signature of one sharp (F#), and a 2/4 time signature. The notation includes a whole note, a half note, and a quarter note, followed by a double bar line and a repeat sign.

Handwritten musical notation for a violin part, labeled "Violin". It features a treble clef, a key signature of one sharp (F#), and a 2/4 time signature. The notation includes a series of eighth notes and quarter notes.

Handwritten musical notation on a single staff, featuring a treble clef, a key signature of one sharp (F#), and a 2/4 time signature. The notation includes a series of quarter notes, with a measure marked "16" and a measure marked "X".

Handwritten musical notation on a single staff, featuring a treble clef, a key signature of one sharp (F#), and a 2/4 time signature. The notation includes a series of quarter notes, with a measure marked "Meno mosso //".

Handwritten musical notation on a single staff, featuring a treble clef, a key signature of one sharp (F#), and a 2/4 time signature. The notation includes a series of quarter notes, with a measure marked "pp" and a measure marked "ah".

Handwritten musical notation on a single staff, featuring a treble clef, a key signature of one sharp (F#), and a 2/4 time signature. The notation includes a series of quarter notes, with a measure marked "pp" and a measure marked "ah".

Four empty musical staves at the bottom of the page, with some faint handwritten markings.