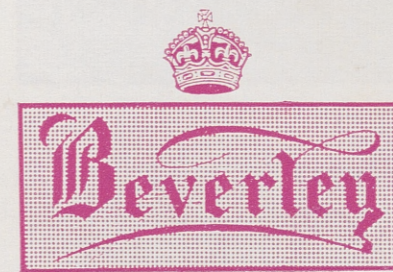


FA-C26-7



BEVERLEY HALL LTD

MANUFACTURERS OF GOOD QUALITY
ELECTRO-PLATE

Catalogue

Regent Parade
BIRMINGHAM



P. 42801

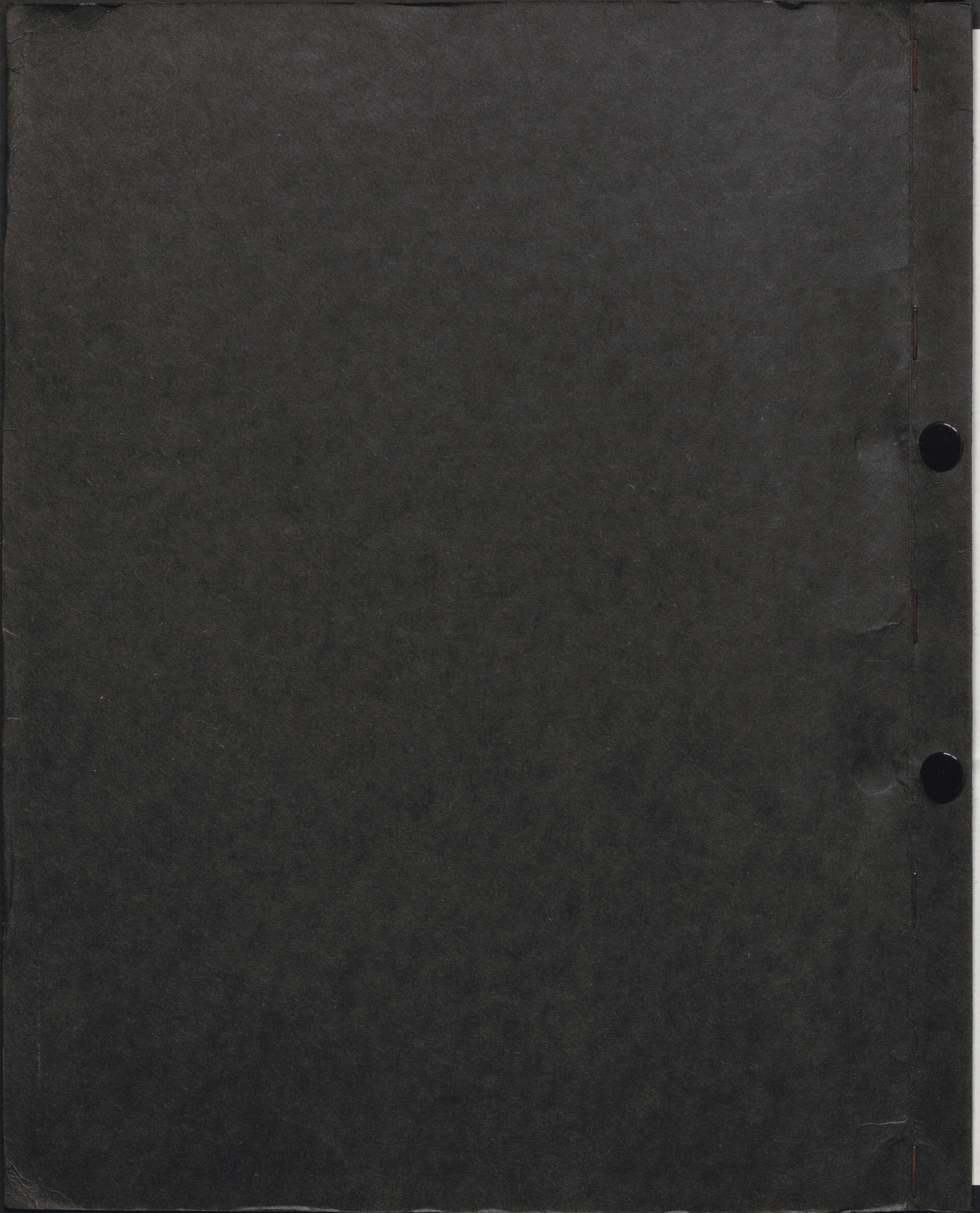


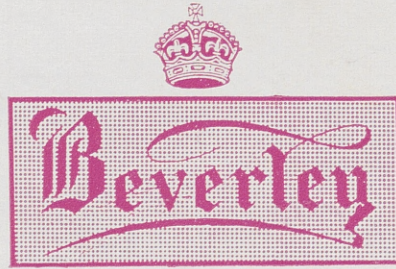
LF



LF

Beverley
Plate





BEVERLEY HALL LTD

MANUFACTURERS OF GOOD QUALITY
ELECTRO-PLATE

Catalogue

Regent Parade
BIRMINGHAM



P. 42801



It is our pleasure and privilege to place before you a new edition of our catalogue of Silver-Plated Ware.

All the patterns illustrated are well tried and popular lines, and whilst it is a very comprehensive list, it by no means represents all the many designs we make.

New numbers in a wide range of goods are constantly evolved, and samples of these are carried by our Representatives and Overseas Agents.

By maintaining a high standard of efficiency in every department of our Works we are able to produce our goods at keenly competitive prices to meet the popular demand. At the same time we achieve a quality and "finish" usually associated only with the highest grade and most expensive articles.

A heavy deposit of silver on all our productions enables us to sell to you, and you to your customer, with the utmost confidence that after many years' wear they will still be in good condition.

Our business has been built up on this reputation for quality and value over a period of half a century.

It is with confidence that we place before you our catalogue of Silver-Plated Ware, and we ask you to give it your consideration, and keep it by you for reference.

H. A. Smart
... —

Managing Director.



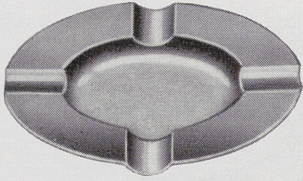
INDEX TO CATALOGUE

A		
Ash Trays	...	1
B		
Biscuit, Butter and Cheese Dishes	...	3
Bread Dishes	...	14
Bread Platters	...	1
Butter Dishes	...	2
C		
Cake Baskets	...	4
Cake Stands	...	13
Casseroles	...	5
Child's Cups	...	8
Cheese Dishes	...	1
Coffee Sets	...	7
Coffee Strainers	...	26
Cocktail Shakers	...	1
Comports	...	3
Condiment Sets	...	6, 7
D		
Dredgers	...	18
E		
Egg Stands	...	9
Entree Dishes	...	10
F		
Flower Vase	...	11
Fruit Dish	...	9
G		
Glass Holders	...	11
H		
Honies	...	11
Hors d'œuvres	...	12
I		
Ice Pail	...	14
J		
Jam Jars	...	11
L		
Leaf Dish	...	11
N		
Napkin Rings	...	15
P		
Plate Stands	...	13
R		
Roll Trays	...	14
Racks and Butters	...	15
S		
Salad Bowls	...	14
Salvers	...	15
Sauce Boats and Trays	...	19
Sauce Bottle Holders	...	16
Serviette Rings	...	15
Sugar Bowls	...	17
Sugar Dredgers	...	18
Sugars and Creams	...	17
Sweet Dish	...	18
Syphon Holder	...	14
T		
Tankards	...	20
Tea and Coffee Sets	...	21, 22, 23, 24, 25
Tea and Coffee Strainers	...	25
Teapot Stands	...	16
Toast Racks	...	18
V		
Vases	...	11

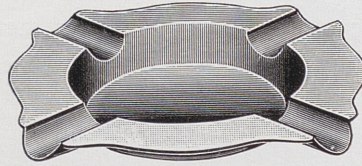


Beverley

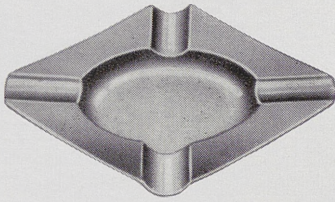
ASH TRAYS



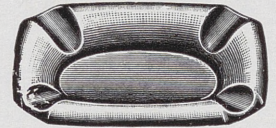
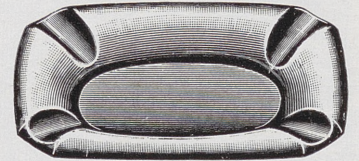
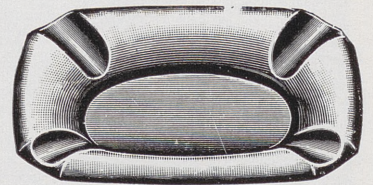
6086



6452 5 in. diameter

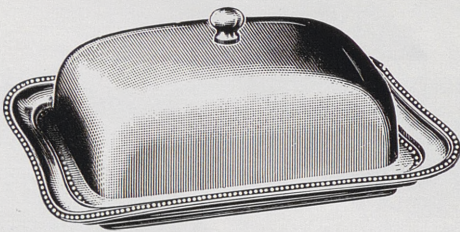


6085



6881 3 in. 4 in. 4½ in.

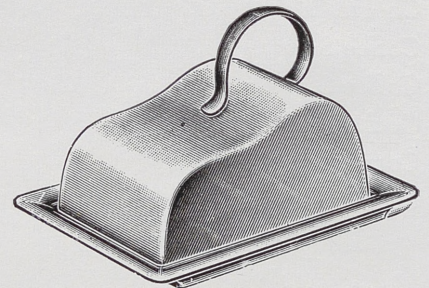
BREAD PLATTERS - CHEESE DISHES



6072
CHEESE DISH



6428 Octagonal
6144 Round. 11 in. diameter,
with wood linings



6637
CHEESE DISH

COCKTAIL SHAKERS



6987 1 pint
Engine turned



6571 1 pint
6571 1½ pints
Engine turned

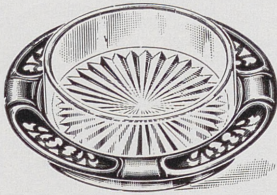


6827 1 pint
6827 1½ pints
Engine turned
or Plain (6826)

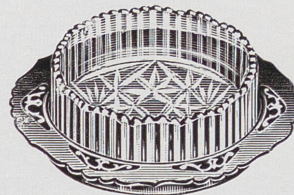


Beverley

BUTTER DISHES



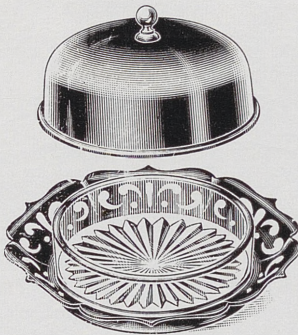
6940 Round



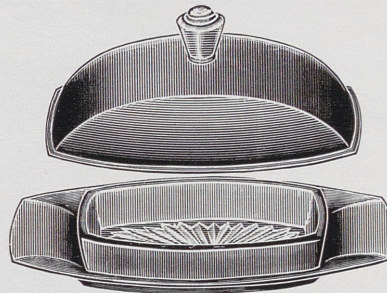
6967 Round



6942 Oval



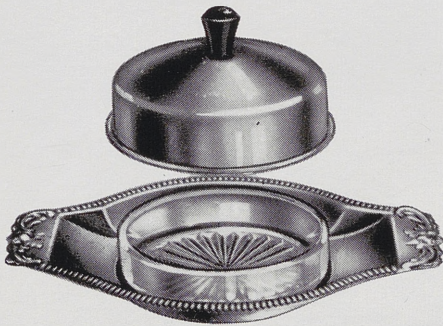
6939C With Cover
6939 Without Cover



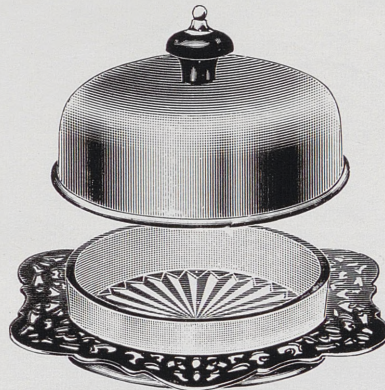
5514 With Cover
5515 Without Cover



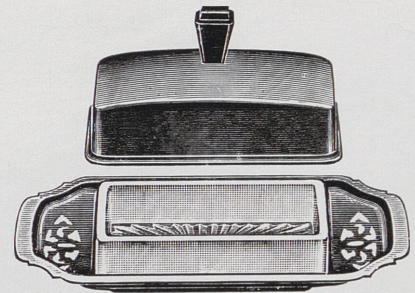
6346C With Cover
6346 Without Cover



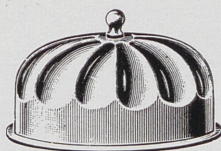
6917C With Cover
6917 Without Cover



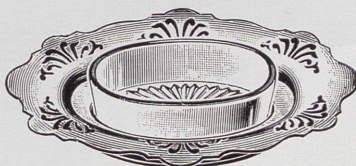
6544 With Cover
6545 Without Cover



4746 With Cover
4748 Without Cover



6434 With Cover
6435 Without Cover



6966 With Engine turned Cover

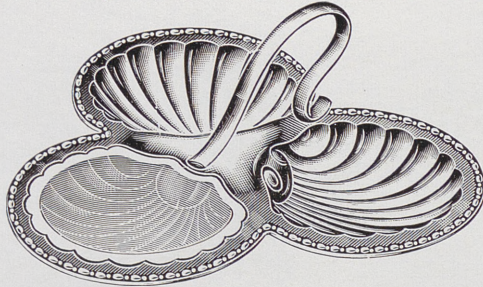


Butter Knife included if Without Cover

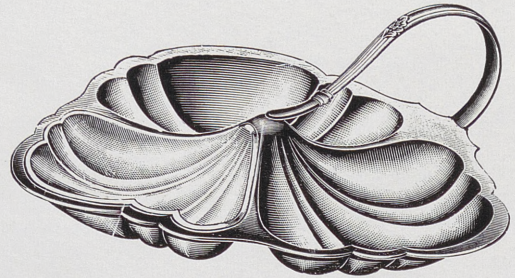


Beverley

BISCUIT, BUTTER AND CHEESE DISHES

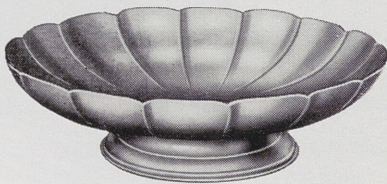


6375



6395

COMPORTS



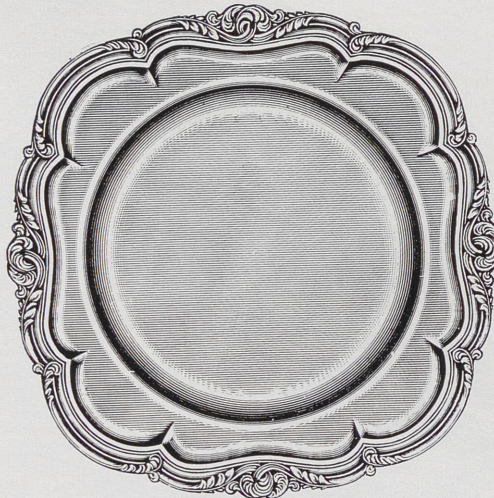
8025 8 in. diameter
8025 9 in. diameter



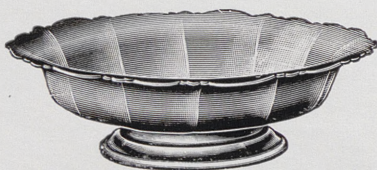
6976



6996 8 in. diameter
6996 10 in. diameter
Engine turned



8024 8 in. diameter



6118



6849

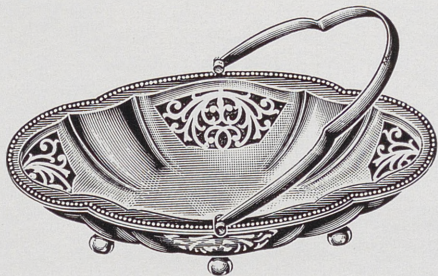


6289

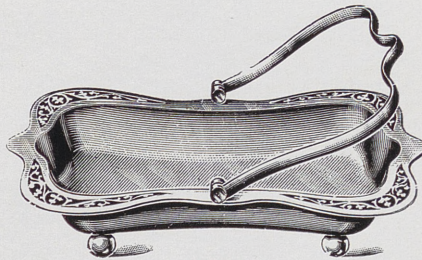


Beverley

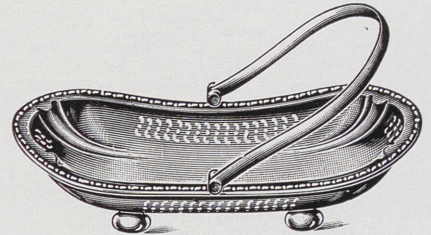
CAKE BASKETS



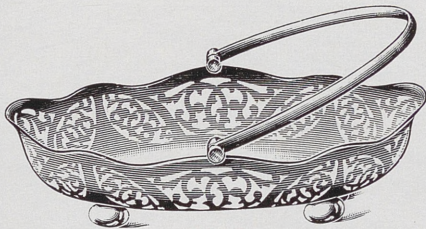
7015



6943



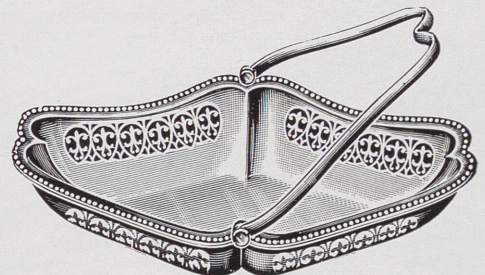
5900



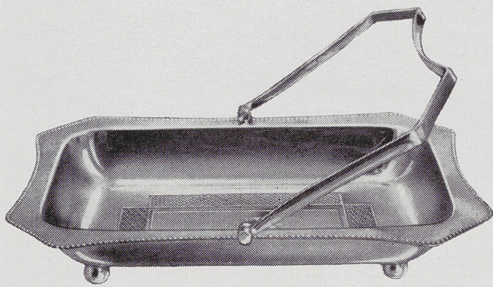
6257



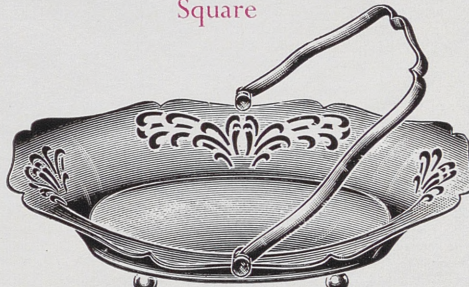
6314
Square



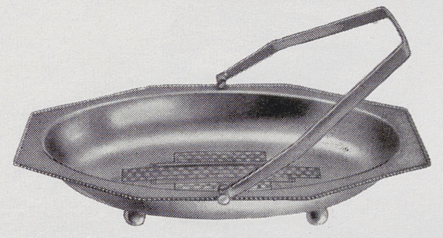
6978



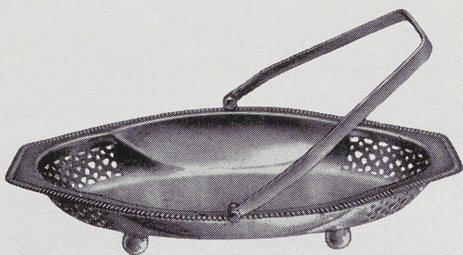
6866



6134



6865



6893



6888



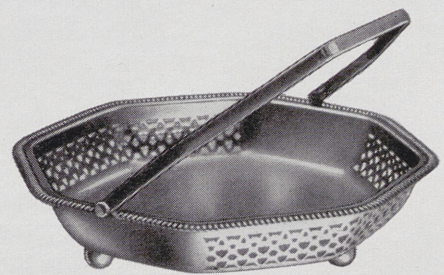
6644



6861



6983



6892



Beverley

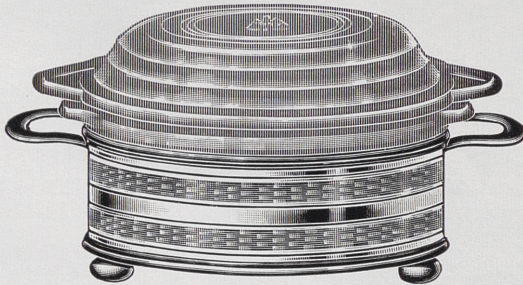
CASSEROLES



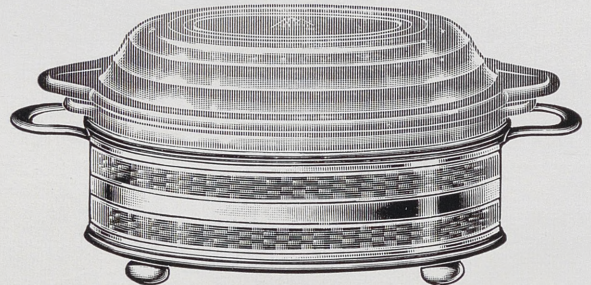
6349 7½ in. diameter
6349 8½ in. diameter
Round



6348 9½ in.
Oval



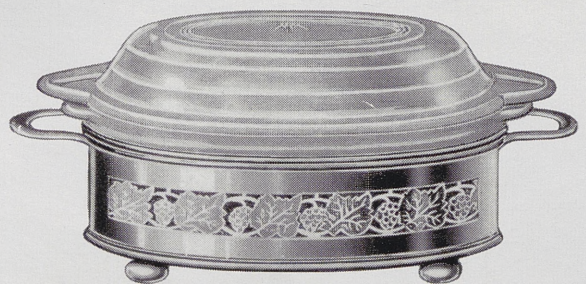
6481 7½ in. diameter
6481 8½ in. diameter
Round



6482 9½ in.
Oval



6680 7½ in. diameter
6680 8½ in. diameter
Round

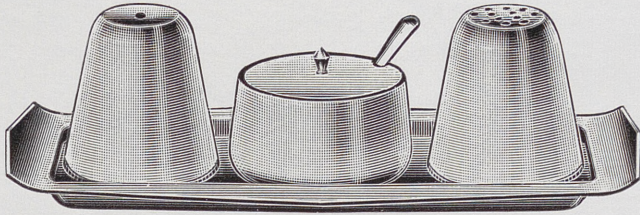


6681 9½ in.
Oval

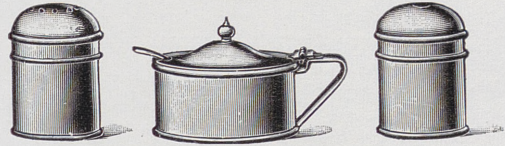


Beverley

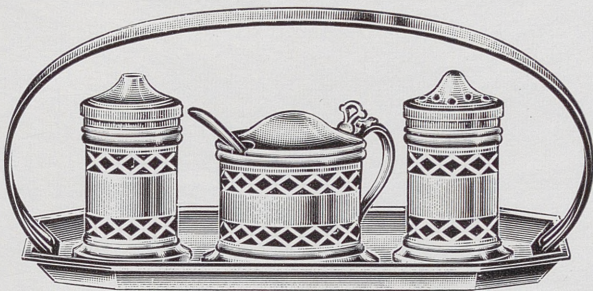
CONDIMENT SETS



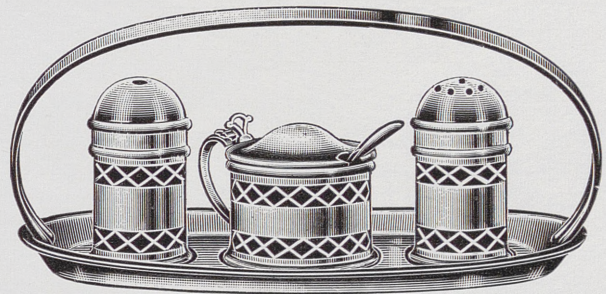
8034



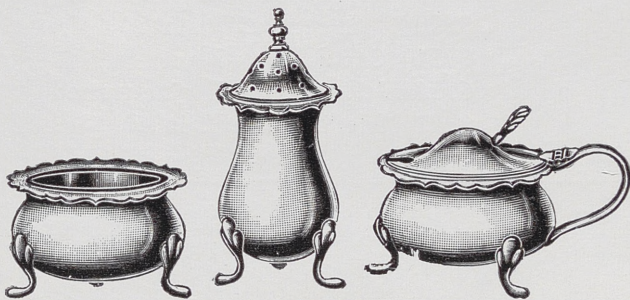
6316
On Oval Tray



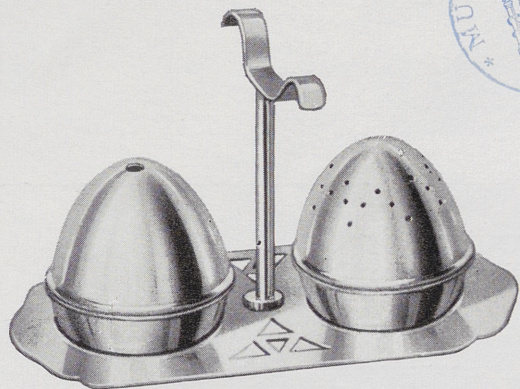
5355H With Handle
5355 Without Handle



6176H With Handle
6176 Without Handle



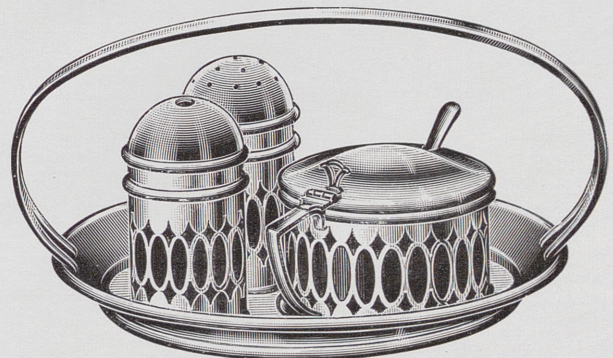
6730
On Oval Tray



8009



6631

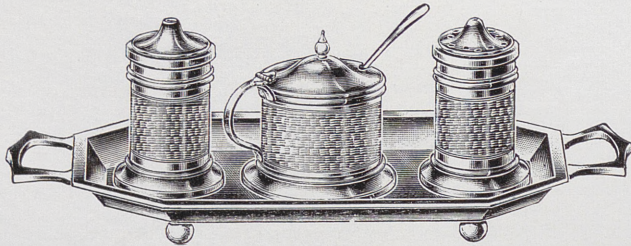


6216H With Handle
6216 Without Handle

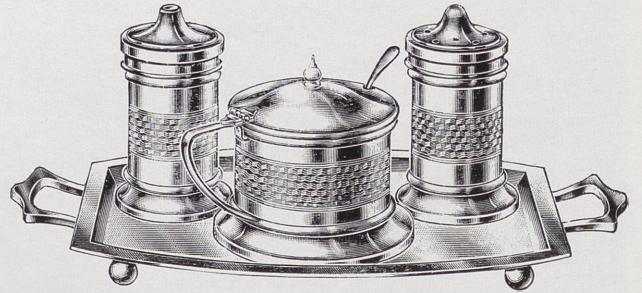


Beverley

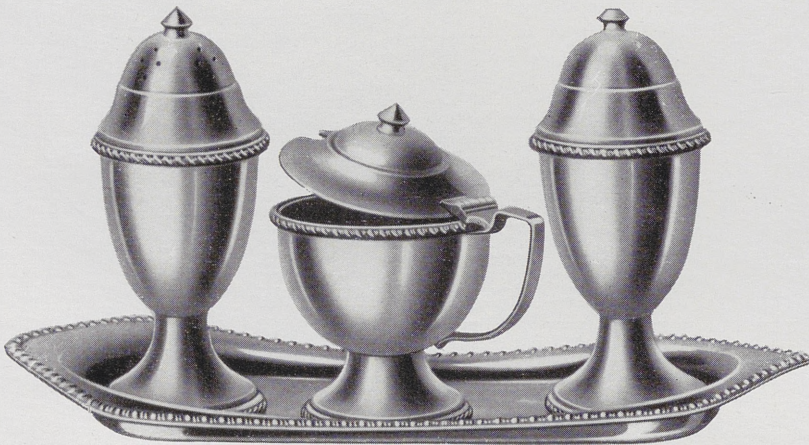
CONDIMENT SETS



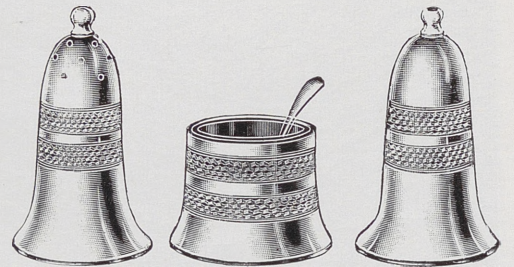
6718
Engine turned Set on Tray



6719
Engine turned Set on Tray

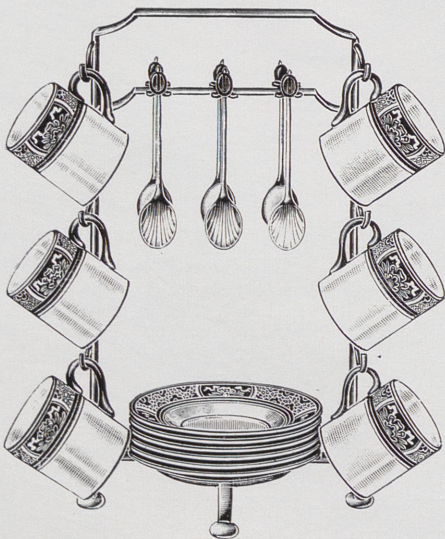


6645



- 6720 Large size Engine turned
- 6750 " " Plain
- 6751 Small Plain
- 6751ET " " Engine turned
- 6991 Medium size Plain

COFFEE SETS



VARIOUS PATTERNS OF CHINA



Beverley

CHILD'S CUPS



6279



6279ET



8030



6417



6417ET



7007ET



6596ET



6416



6416ET



6844ET



6993



6596



Beverley

EGG STANDS



6629



6628

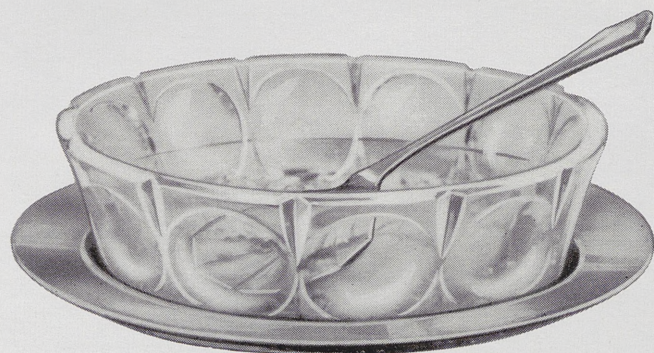


6717 With Spoon



6630

FRUIT DISH



8035S
with Fluted Serving Spoon

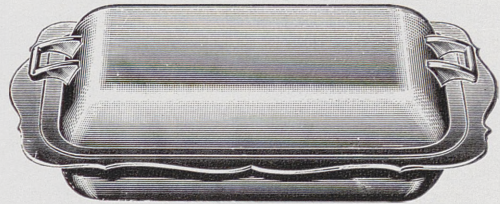


Beverley

ENTRÉE DISHES



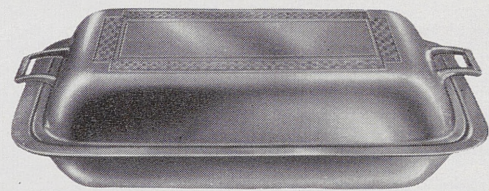
6812
Oval with Engine turned Cover



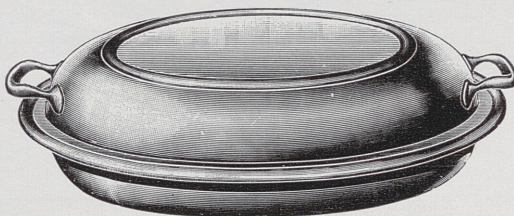
6813
Oblong with Engine turned Cover



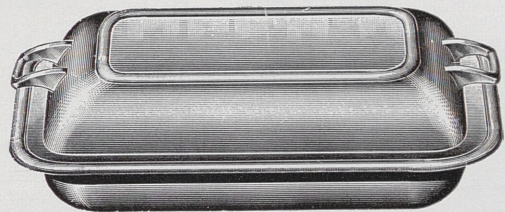
6617
Oval with Engine turned Cover



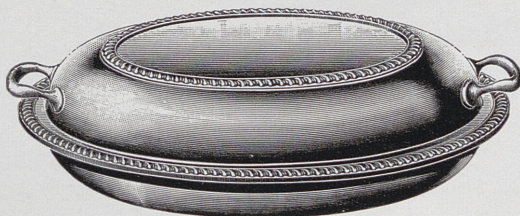
6583
Oblong with Engine turned Cover



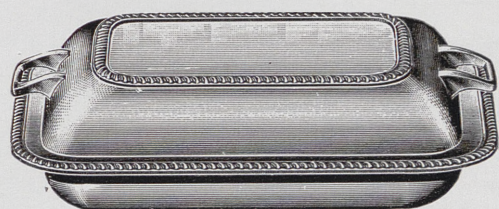
6458
Oval, Solid Mounted



6459
Oblong, Solid Mounted



6406
Oval, Solid Mounted



6269
Oblong, Solid Mounted



Beverley

GLASS HOLDERS



6890



6498

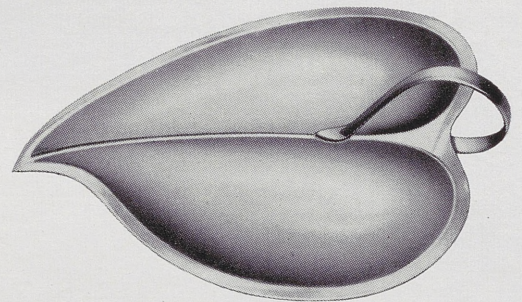
FLOWER VASE



6351

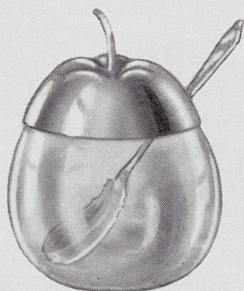
3½ in.	4¼ in.	5 in.	6 in.	7 in.
8 in.	9 in.	10½ in.	12 in.	

LEAF DISH



8039

HONEY JARS



6746



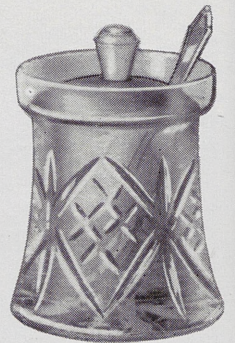
6901



6947



6949



6950

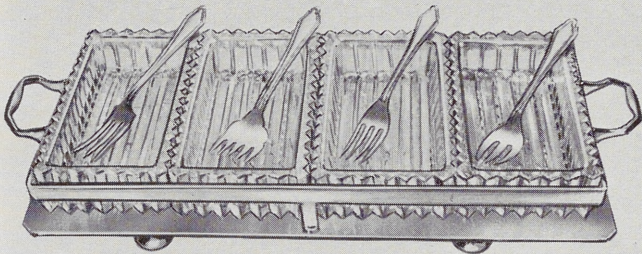


Beverley

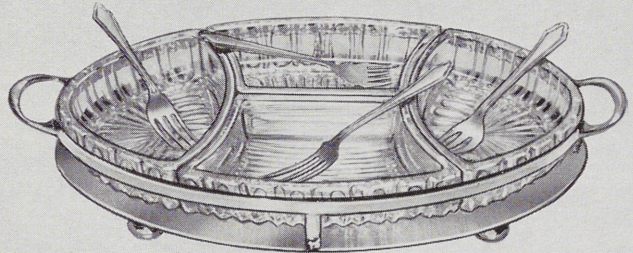
HORS D'ŒUVRE DISHES



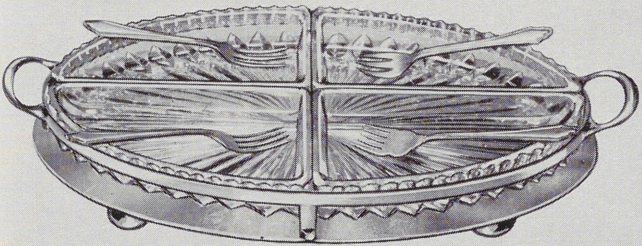
7010 ROUND



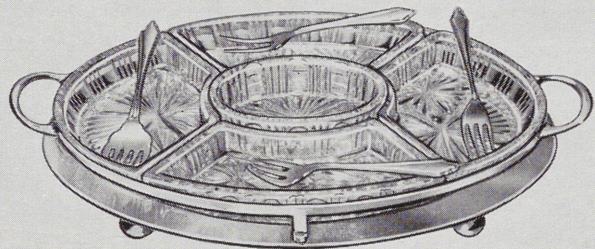
6835



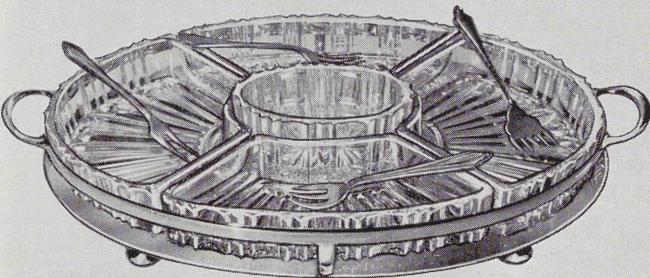
6833 OVAL



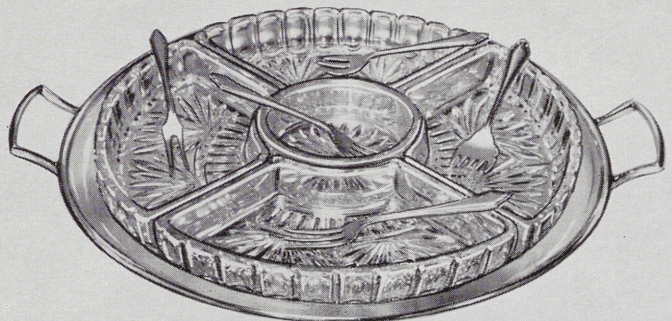
8028 OVAL



6932 OVAL



6834 OVAL

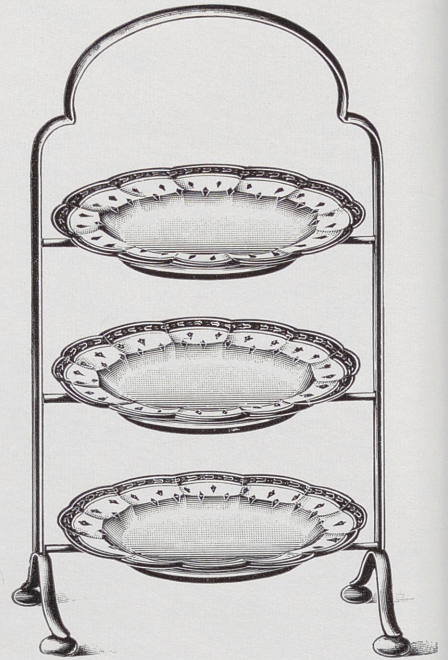
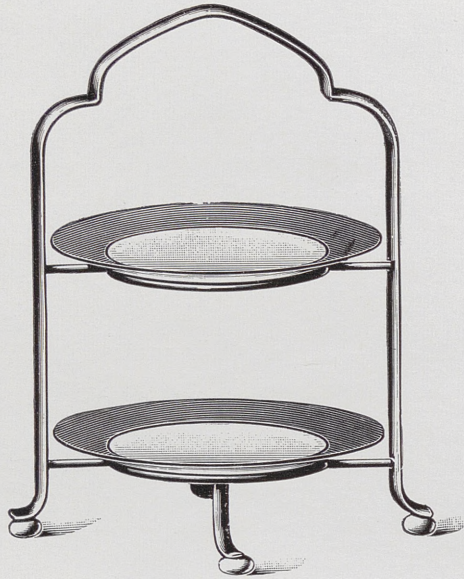
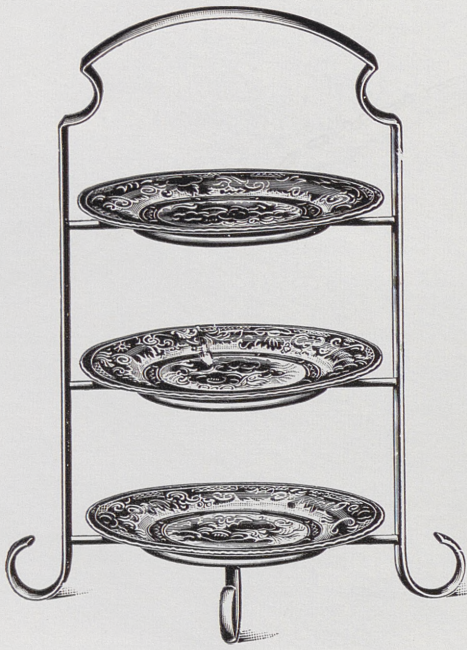


6768 ROUND

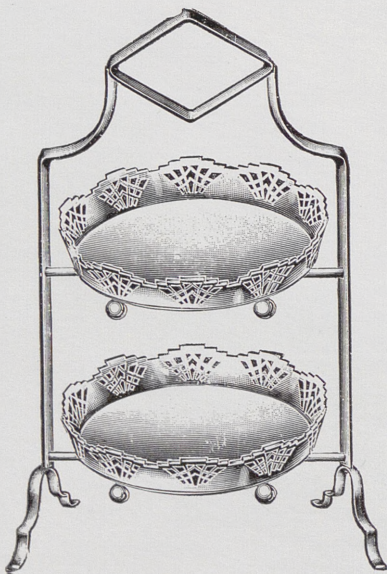


Beverley

PLATE STANDS



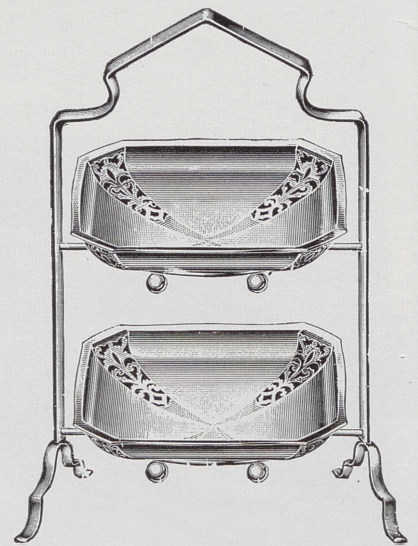
VARIOUS PATTERNS OF CHINA



7095
E.P.N.S. Plates on
Two or Three Tier Stands



7246
E.P.N.S. Plates on
Two or Three Tier Stands

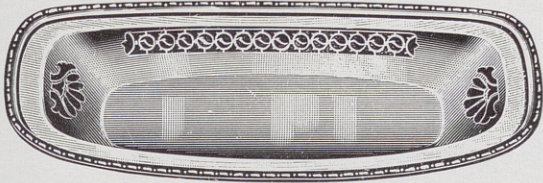


7144
E.P.N.S. Plates on
Two or Three Tier Stands



Beverley

ROLL TRAYS



6100



6971



7019

SALAD BOWLS



6879



8023

SYPHON HOLDER



4039

ICE PAIL

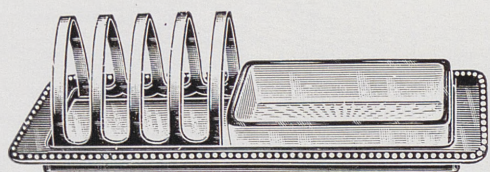


6558
6 $\frac{1}{4}$ in. 8 $\frac{1}{4}$ in.
With Loose Drainer

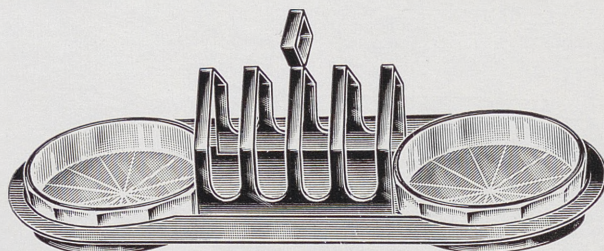


Beverley

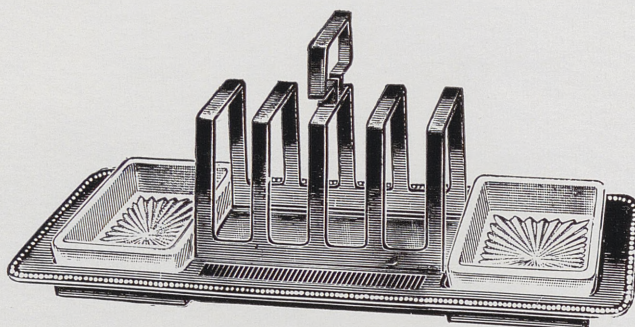
TOAST-RACKS AND BUTTERS



4230



6253



6442

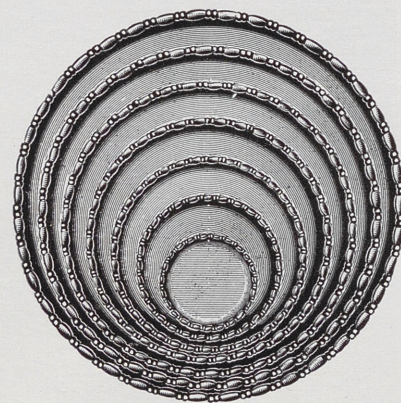
SALVERS



6643
16 in. Oval



6910
6 in. 8 in. 10 in. 12 in. 14 in.



6611
3 in. 5 in. 6 in. 8 in.
10 in. 12 in. 14 in.

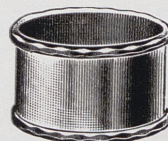
SERVIETTE RINGS



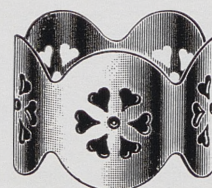
6205



6206



6115



6921



Beverley

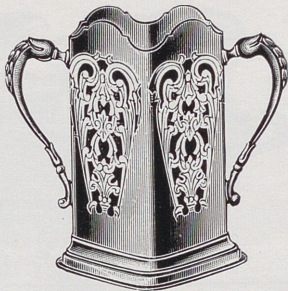
SAUCE BOTTLE HOLDERS



6476
Pierced



6485
Pierced

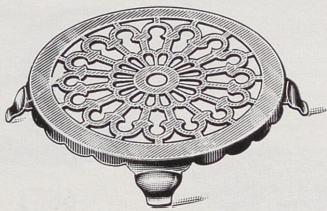


4116
Pierced

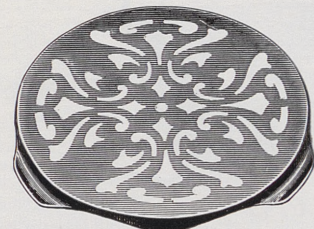


4117
Pierced

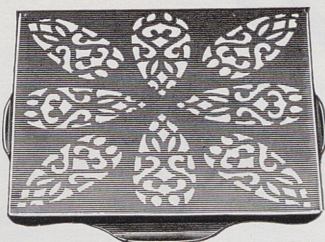
TEAPOT STANDS



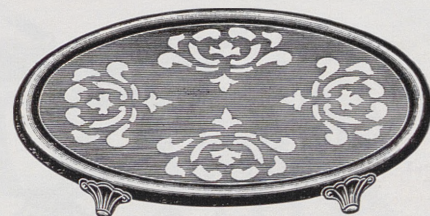
6095
Round



6150 Pierced
6707ET Round, Engine turned



6106
Square



4057
Oval

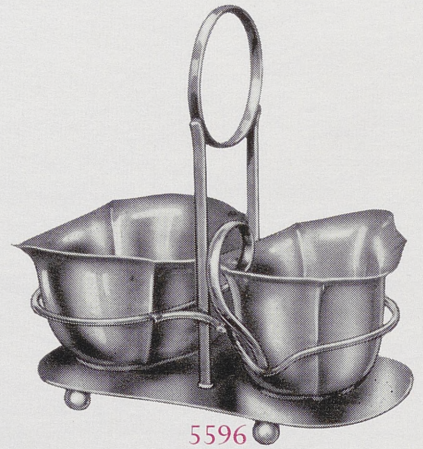


Beverley

SUGARS AND CREAMS



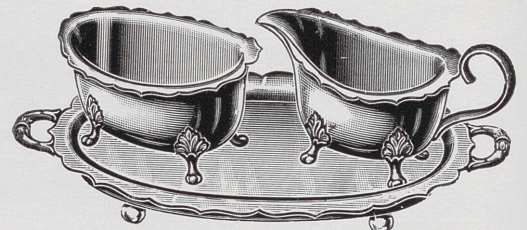
6190



5596



6005



4095

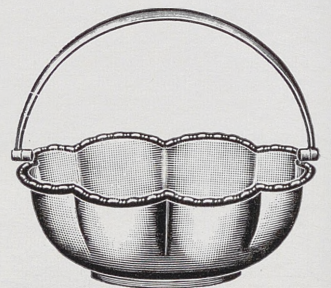
SUGAR BOWLS



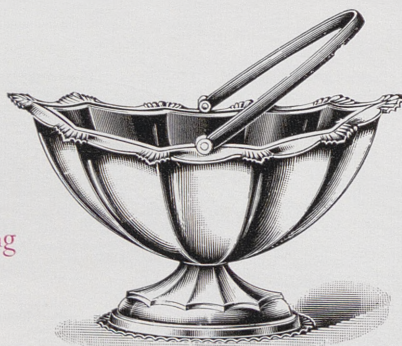
6735
Bright Inside



6609
With Glass Lining and
Swing Handle



6683
Bright Inside



6692
With Glass Lining

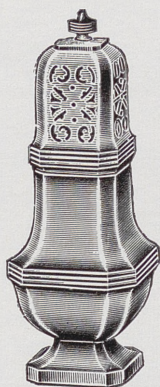


6693
With Glass Lining

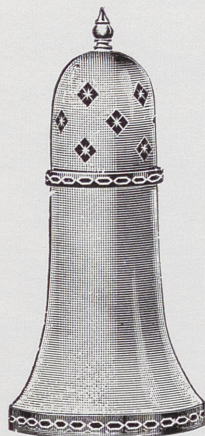


Beverley

SUGAR DREDGERS



6424



7004



6464



6944
Cut Crystal



6868
Pressed Lead Crystal



6945
Cut Crystal

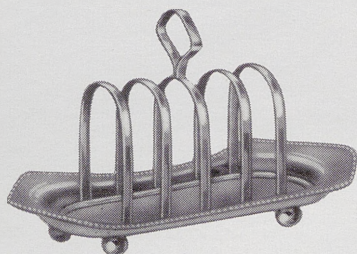
SWEET DISH



6171

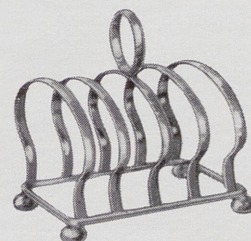
MANY OTHER PATTERNS

TOAST RACKS



6137

ALSO
OTHER PATTERNS
WITH OR WITHOUT
TRAY

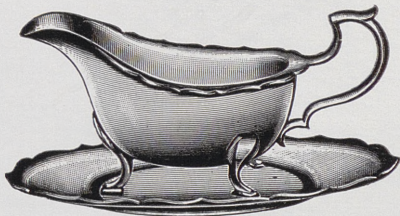


6081



Beverley

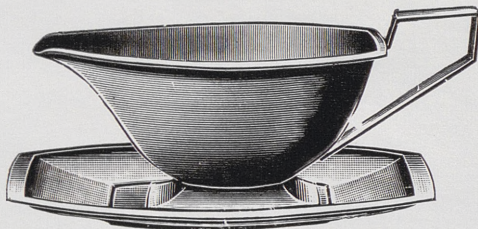
SAUCE BOATS AND TRAYS



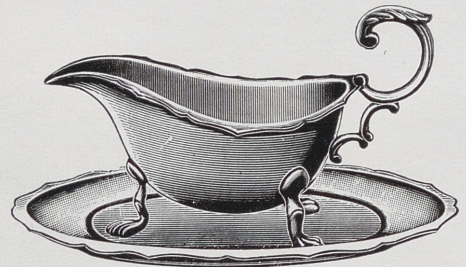
6573
 $\frac{1}{4}$ pint $\frac{1}{2}$ pint



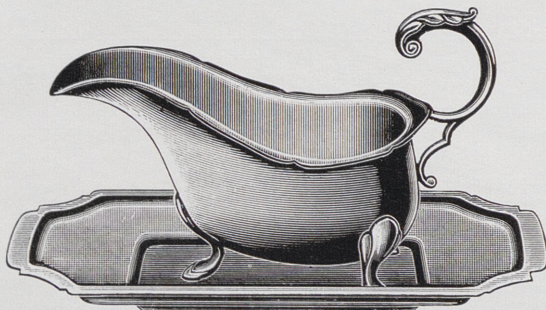
6307
 $\frac{1}{4}$ pint



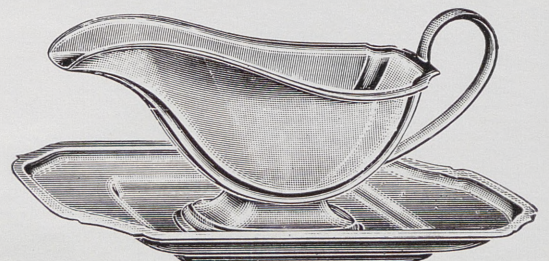
5232
 $\frac{1}{6}$ pint $\frac{1}{4}$ pint $\frac{1}{2}$ pint



6101
 $\frac{1}{6}$ pint $\frac{1}{4}$ pint



6192
 $\frac{1}{4}$ pint

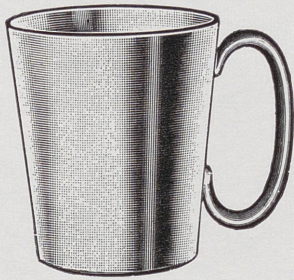


6167
 $\frac{1}{4}$ pint $\frac{1}{2}$ pint



Beverley

TANKARDS



$\frac{1}{2}$ pint 1 pint
6304 Plain
6726 Engine turned
Bright Inside



6407 $\frac{1}{2}$ pint 1 pint
6407ET Engine turned $\frac{1}{2}$ pint 1 pint
Dull Inside



6737 $\frac{1}{2}$ pint 1 pint
Bright Inside



8041 1 pint



8027ET Engine turned 1 pint



8021
LAGER TANKARD



8022
LAGER TANKARD

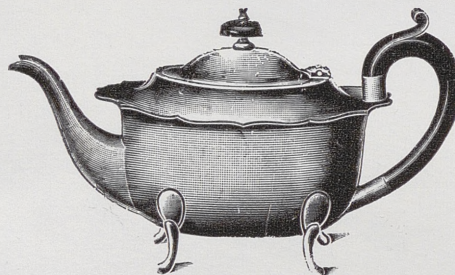


Beverley

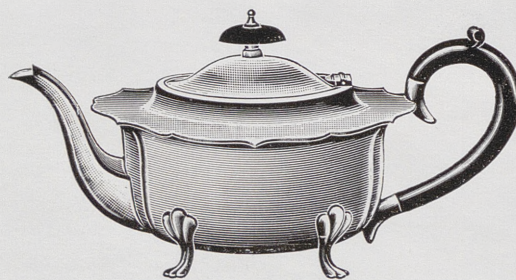
TEA SETS



6990
" JACOBEAN "
SUGAR AND CREAM BRIGHT INSIDE



7172
" KING JAMES "
Oval
SUGAR AND CREAM BRIGHT INSIDE



6839
" KING JAMES "
SUGAR AND CREAM BRIGHT INSIDE



Beverley

TEA SETS



6974
SUGAR AND CREAM DULL INSIDE



7000
SUGAR AND CREAM DULL INSIDE

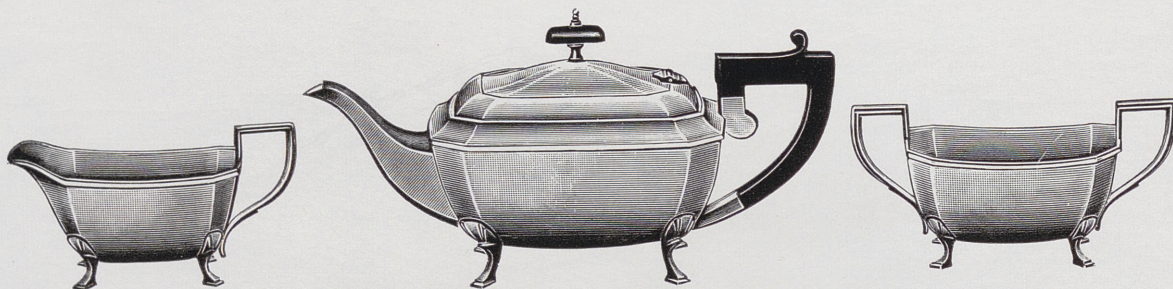


6765
SUGAR AND CREAM BRIGHT INSIDE



Beverley

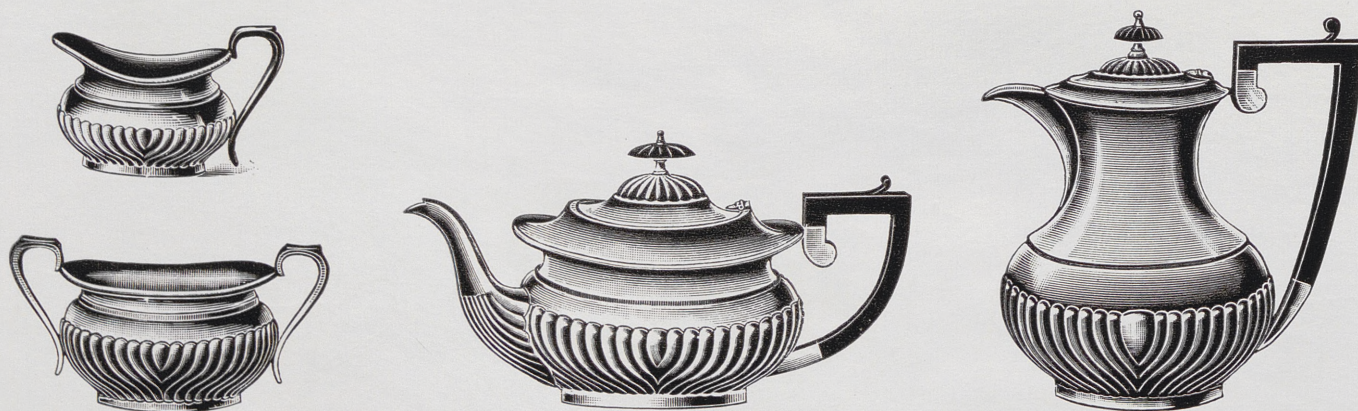
TEA SETS



7055
SUGAR AND CREAM BRIGHT INSIDE



7023
"PLAIN GEORGIAN"
SUGAR AND CREAM BRIGHT INSIDE

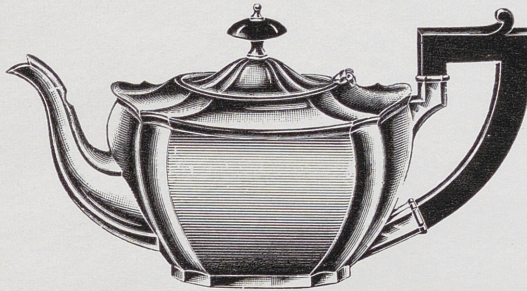
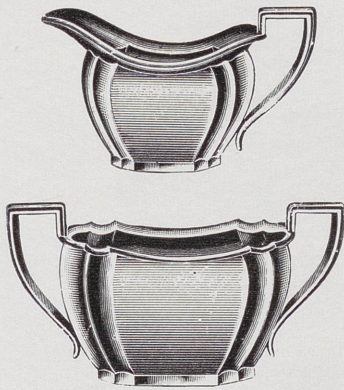


6688
"FLUTED GEORGIAN"
SUGAR AND CREAM DULL INSIDE



Beverley

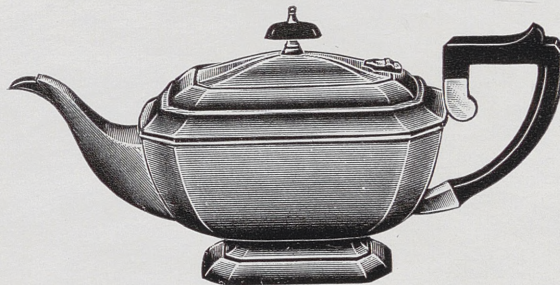
TEA SETS



6736

“NORFOLK”

SUGAR AND CREAM BRIGHT INSIDE



7059

“STAFFORD”

SUGAR AND CREAM BRIGHT INSIDE



“HOTEL” TEA SETS



7060

SUGAR AND CREAM DULL INSIDE



Beverley

TEA SET

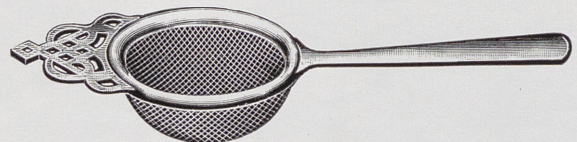


8040 ROUND SPUN TEA SET
SUGAR AND CREAM DULL INSIDE

TEA AND COFFEE STRAINERS

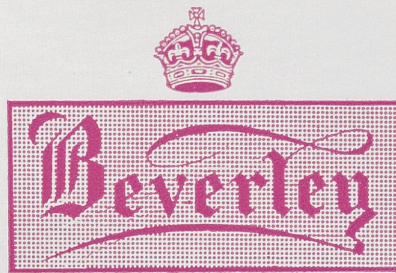


6642
6642S With Stand



6641
6641S With Stand

ALSO TEA STRAINERS WITH DOUBLE END OR LONG HANDLE



To our Mutual Advantage

When you have looked through this book we hope you will place it where you can find it again easily when the occasion arises for you to refer to it. Before doing so, may we ask you to **destroy our old catalogue.**



306/ H: 600 1877

