

902
IX

FA. 125

A MANUAL
OF
GOTHIC MOULDINGS

BY
F. A. PALEY, M. A.



New Edition

ARCHITECTURAL BOOK PUBLISHING Co.
31 East 12th Street, New York

colorchecker CLASSIC

x-rite

A MANUAL
OF
GOTHIC MOULDINGS

BY
F. A. PALEY, M. A.

50

3902
IX

FA. 125

A MANUAL
OF
GOTHIC MOULDINGS

BY
F. A. PALEY, M. A.



New Edition

ARCHITECTURAL BOOK PUBLISHING Co.
31 East 12th Street, New York

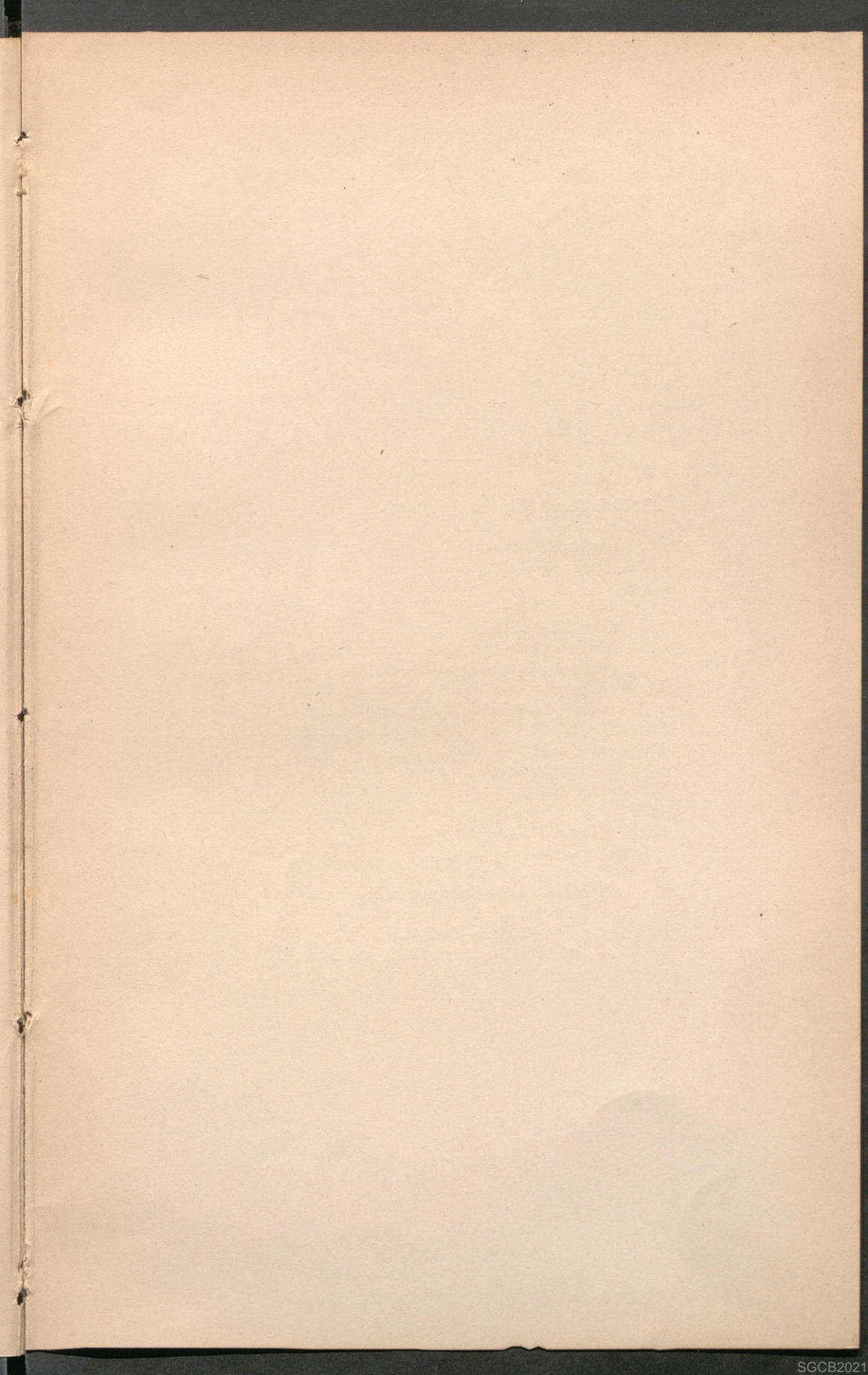
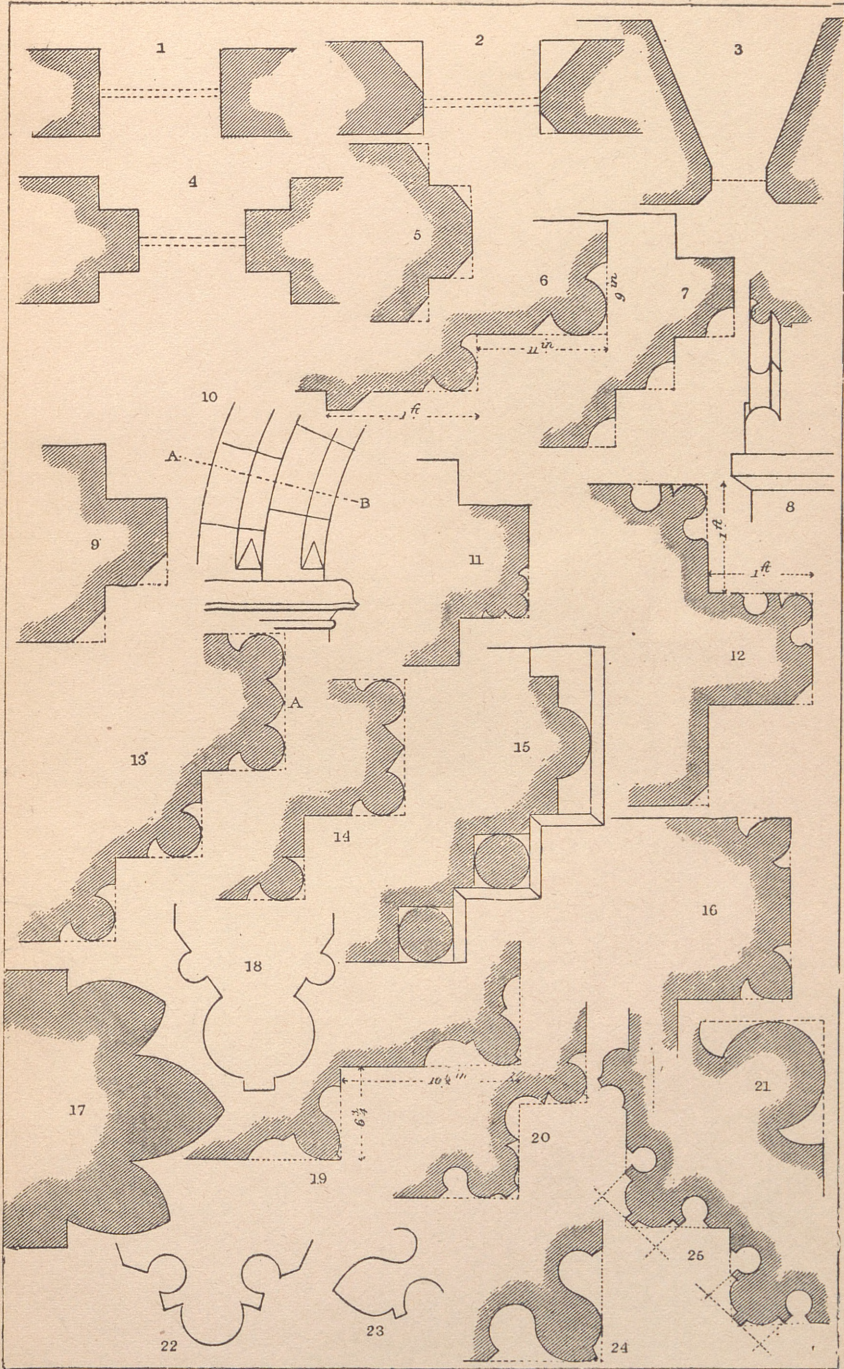


PLATE I.

1. Plain Saxon Window (Diagram).
2. Example of Chamfer.
3. Example of Thirteenth-Century Chamfered Window.
4. Diagram of Sub-arch.
5. Do. do. Chamfered.
6. Little Casterton—Arch Mold.
7. Cherry Hinton—Cambridgeshire—Chancel Arch.
8. Little Casterton—Transition Norman Arch.
9. Horningsea, Cambridgeshire—c. 1190.
10. Waterbeach, do. Broach Stop.
11. Friesland, Lincolnshire—Norman Pier Arch.
12. Skirbeck, do. Early English Pier Arch.
13. Great Grimsby.
14. Clee, Lincolnshire.
15. Adel, near Leeds.
16. St. Mary's, Ely.
17. Clee, Lincolnshire—Respond.
18. Tintern Abbey—Groin Rib.
19. St. Benet's, Lincoln.
20. Lincoln Cathedral—Doorway in Precincts.
21. Fig. 6 enlarged.
22. Robertsbridge Abbey—Groin Rib.
23. Diagram of Pointed and Side Filleted Bowtell.
24. Fig. 19 enlarged.
25. Little Casterton, Rutland.





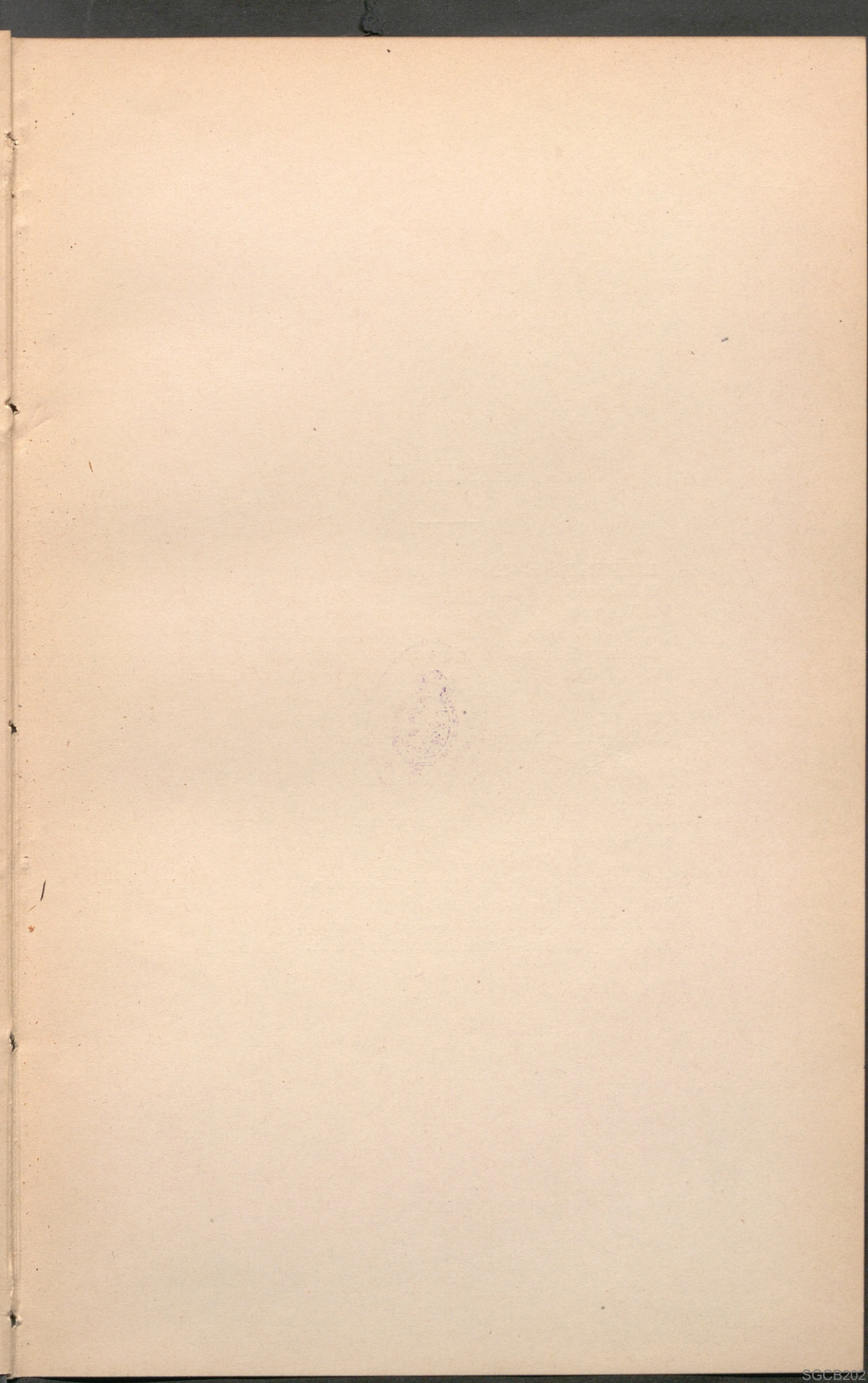
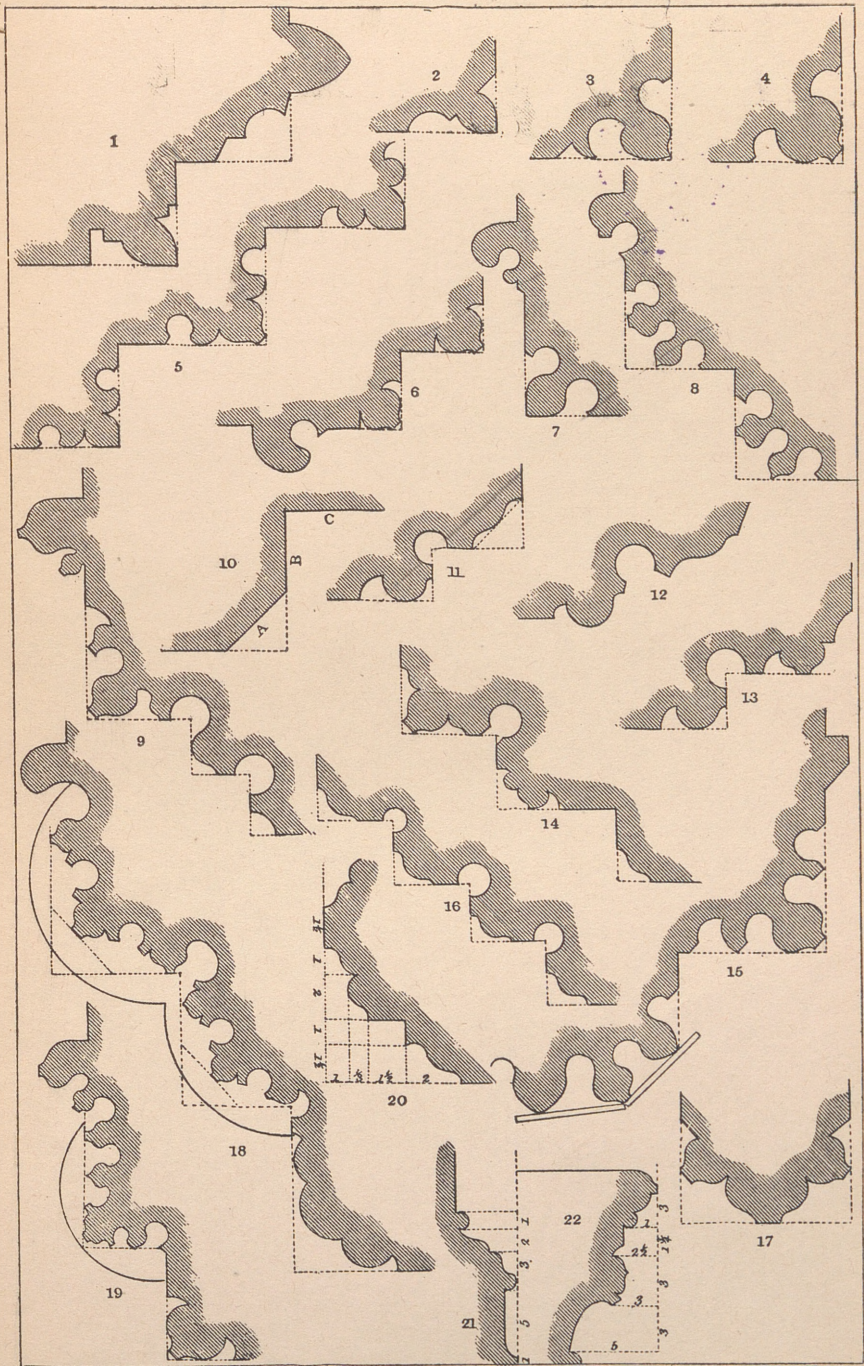




PLATE II.

1. Middle Rasen—Early English Pier Arch.
2. Ludborough, Lincolnshire—Doorway.
3. Langtoft, do. Chancel Arch.
5. Great Grimsby, do. South Porch, Jamb.
6. Cherry Hinton, Cambridgeshire—North Door.
7. Do. do. Chancel Door, Interior.
8. Do. do. Pier Arch.
9. Over, do. Doorway.
10. Diagram of Planes—A Chamfer Plane.
B Soffit Plane.
C Wall Plane.
11. Over, Cambridgeshire.
13. Do. do. Window Jamb.
14. Madingley, do. do.
15. Stamford, All Saints'—Pier Arch.
16. Trumpington, Cambridgeshire—Doorway.
17. Tintern Abbey—Groin Rib.
18. Cambridge, St. Clement's—South Doorway.
19. Cherry Hinton—Inner Door, South Porch.





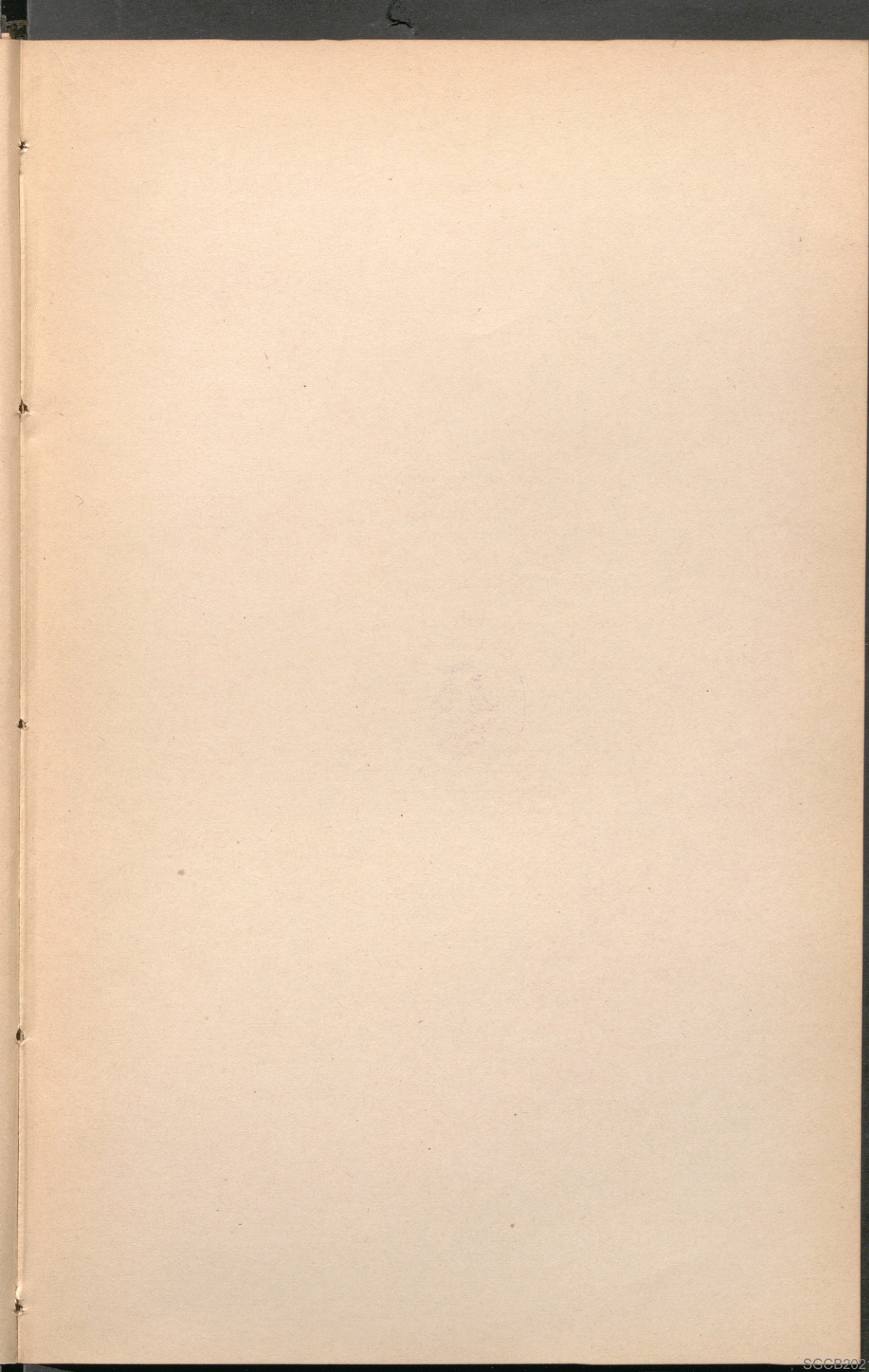
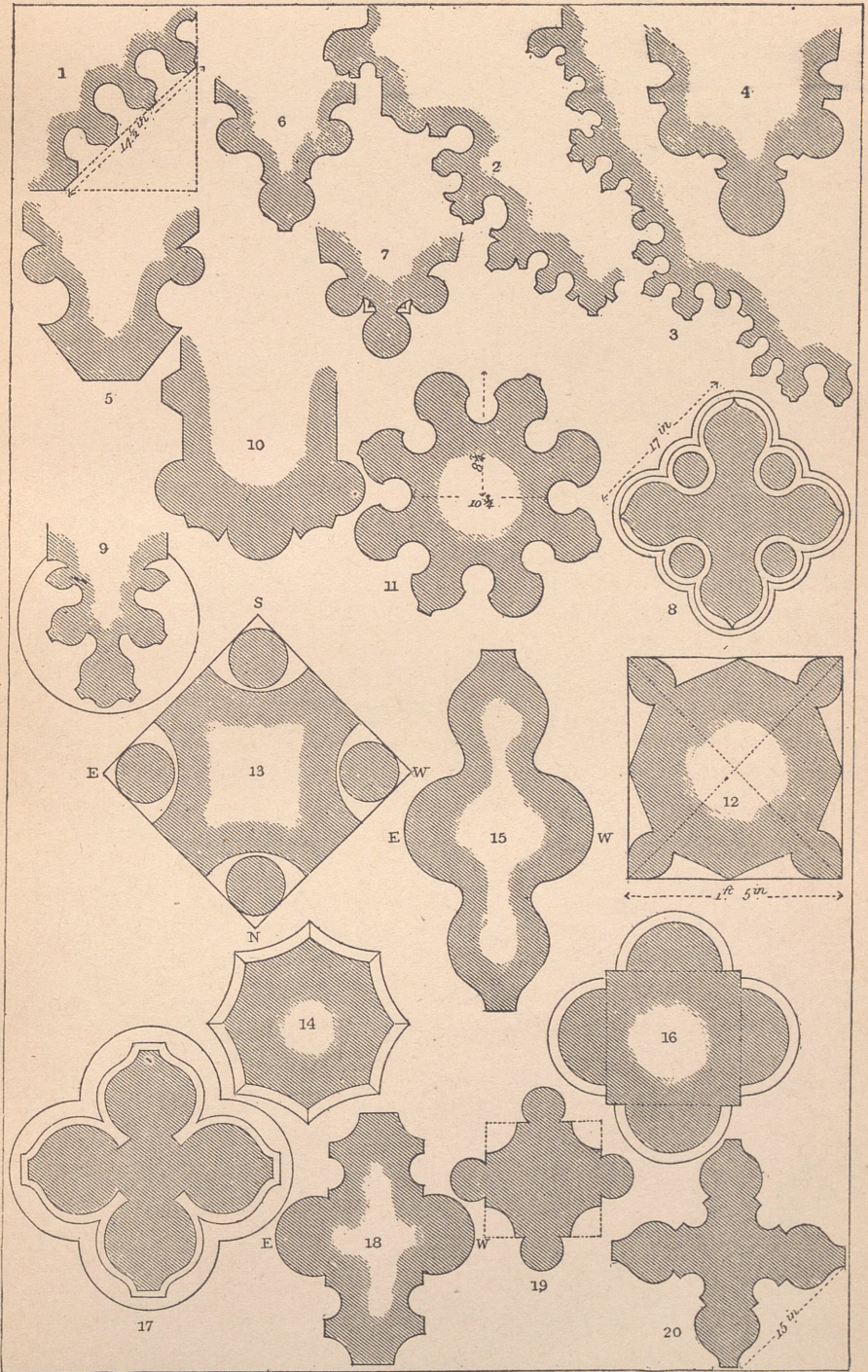


PLATE III.

1. Louth—Early English Doorway.
2. Plymouth—Belfry Arch.
3. Ely Cathedral—Pier Arches, Choir.
4. Robertsbridge Abbey—Groin Rib.
5. Tintern Abbey—Fragment.
6. St. Mary's Abbey, York—Fragment.
7. Robertsbridge Abbey—Groin Rib.
8. All Saints', Stamford.
9. Histon, Cambridgeshire—Arch over Piscina and Capital.
10. Wittering, Northants—Chancel Arch.
11. Furness Abbey—Chapter House.
12. St. Peter Gowts, Lincoln.
13. Ruskington, Lincolnshire.
14. Utterby, do.
15. Attleborough, Norfolk.
16. Common form of Decorated Pier.
17. Skelton, near York.
18. St. John's, Stamford.
19. St. Martin's, do.
20. St. Mary's, do.



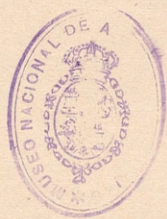
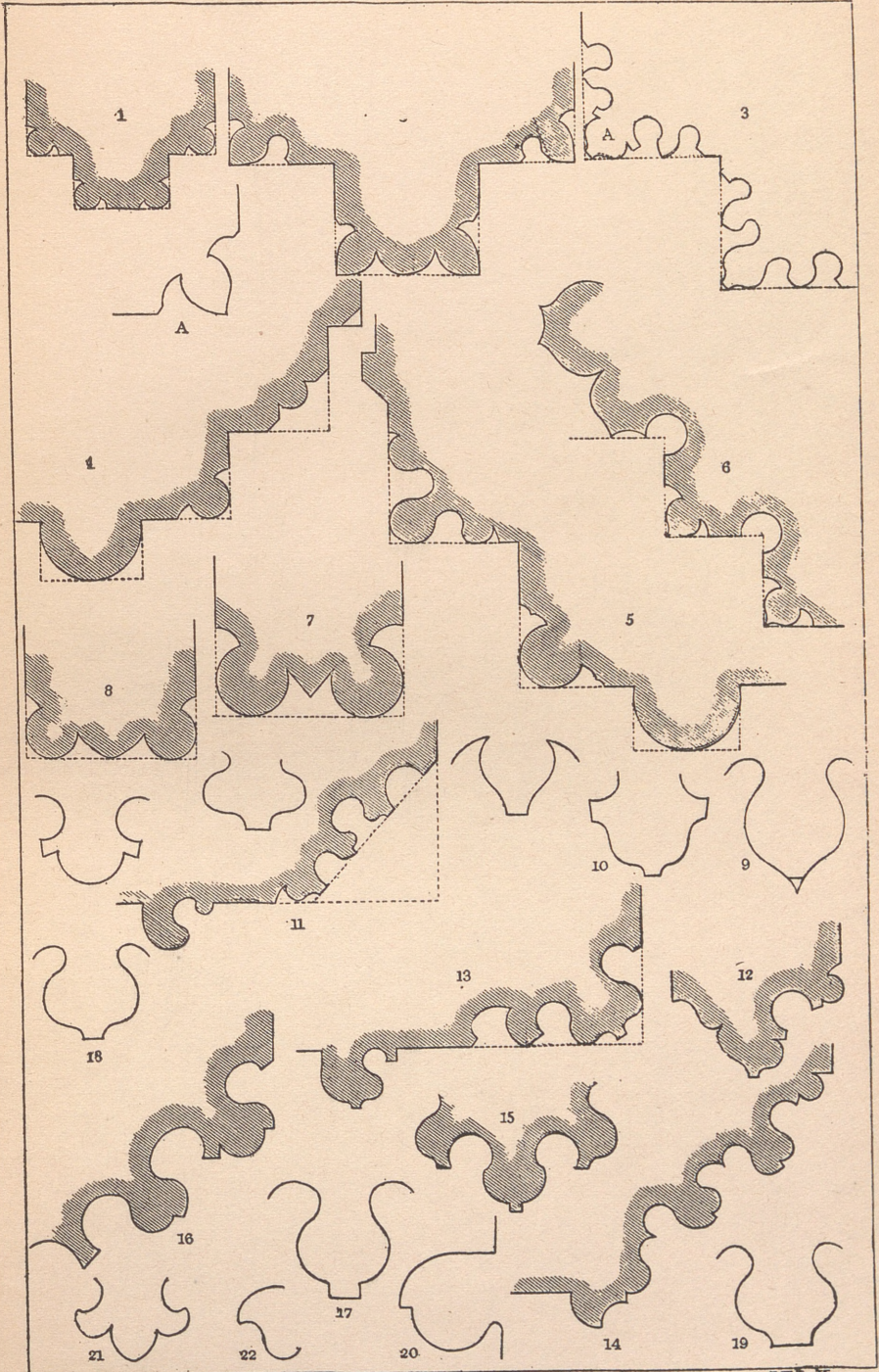


PLATE IV.

1. Diagram of Roll Molding.
2. Reymerton, Norfolk.
3. Diagram of first sketch of Mold.
4. Barholme—semi-Norman Arch.
5. Barnack—Early English Arch.
6. Trumpington—Belfry Arch.
7. Glastonbury—c. 1200—Groin Rib.
8. Peterborough Cathedral—Groin Rib.
9. Diagram of possible first formation of Fillet.
10. Diagram of common form, Roll and Triple Fillet.
11. Ludborough, Lincolnshire—Chancel Doorway.
12. } Lincoln Cathedral.
13. }
14. Yaxley, Hunts—Doorway.
15. Furness Abbey—Groin Rib.
16. Lincoln Cathedral—Arcade.
17. Diagram of Roll and Fillet.
18. Do. do.
19. Do. Broad Fillet.
20. Do. Scroll Molding.
21. Do. Fleur-de-lis Molding.
22. Do. variety of Scroll Molding.





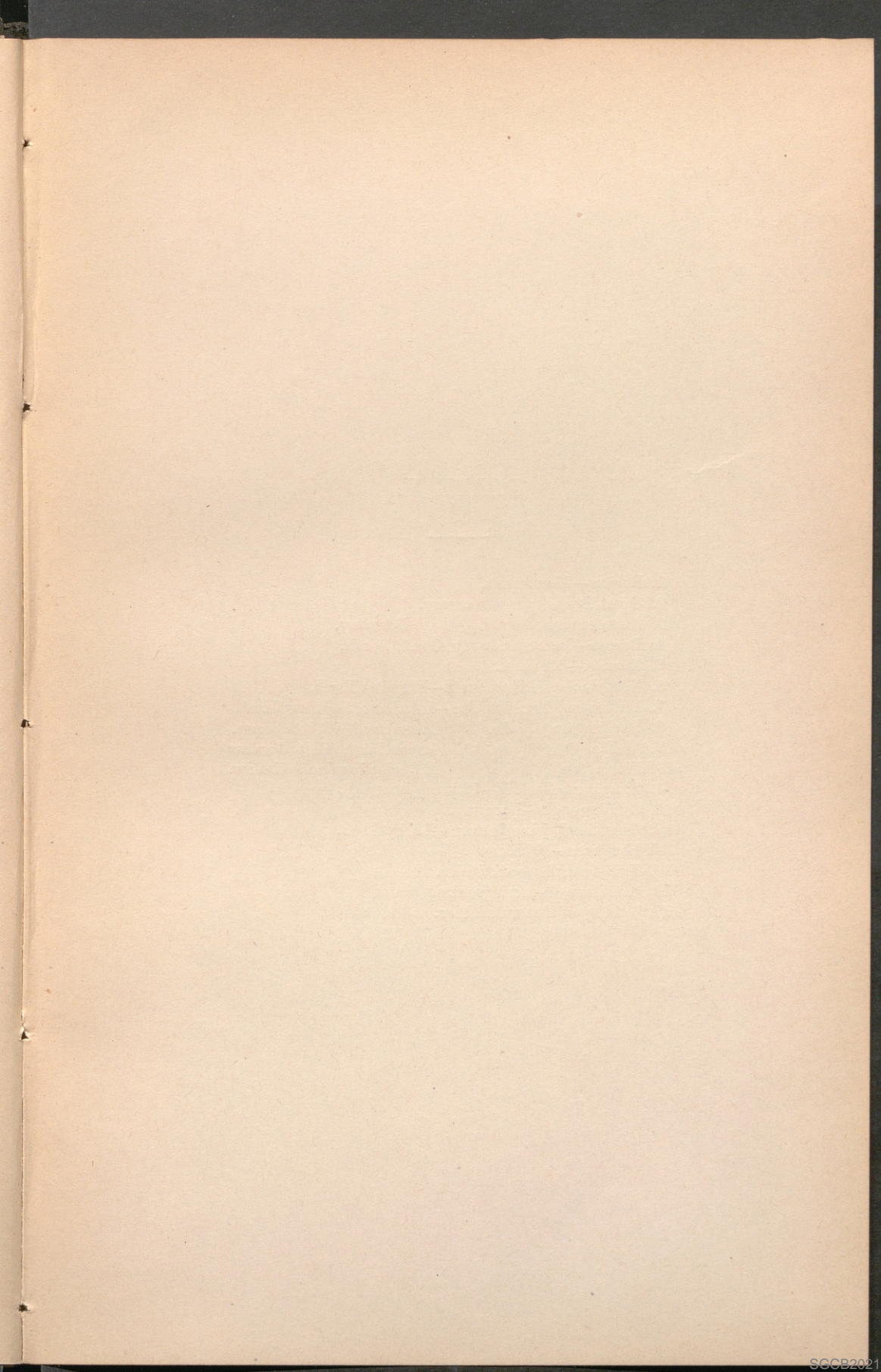
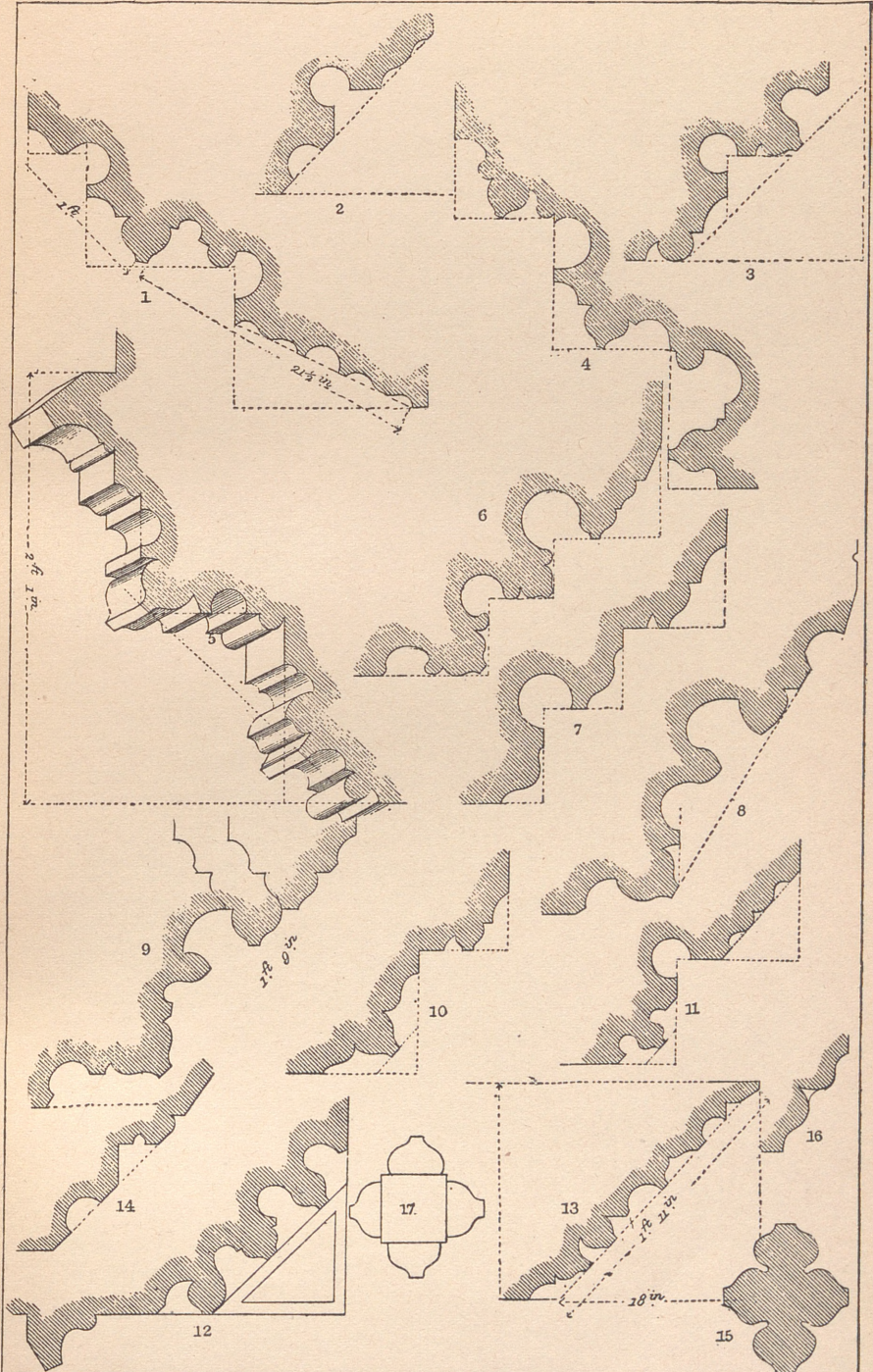


PLATE V.

1. Boston—Monument.
2. Great Ellingham—Doorway.
3. Attleborough, Norfolk—West Doorway.
4. Boston—Inner Doorway, South Porch.
5. Ewerby—Monument.
6. Northborough, Northants—Window Jamb.
7. Benington, Lincolnshire—Interior of Window Jamb.
8. Heckington, do. Interior of Window Jamb.
9. Do. do. Inner Jamb, East Window
10. Benington, do. Exterior Jamb of Window.
11. Hingham, Norfolk—Chancel Doorway.
12. Attleborough—Doorway.
13. West Keal, Lincolnshire—Belfry Arch.
14. Hingham—Window.
15. Variety of Decorated Pier.
16. Stretham, Cambridgeshire.
17. Variety of Decorated Pier.





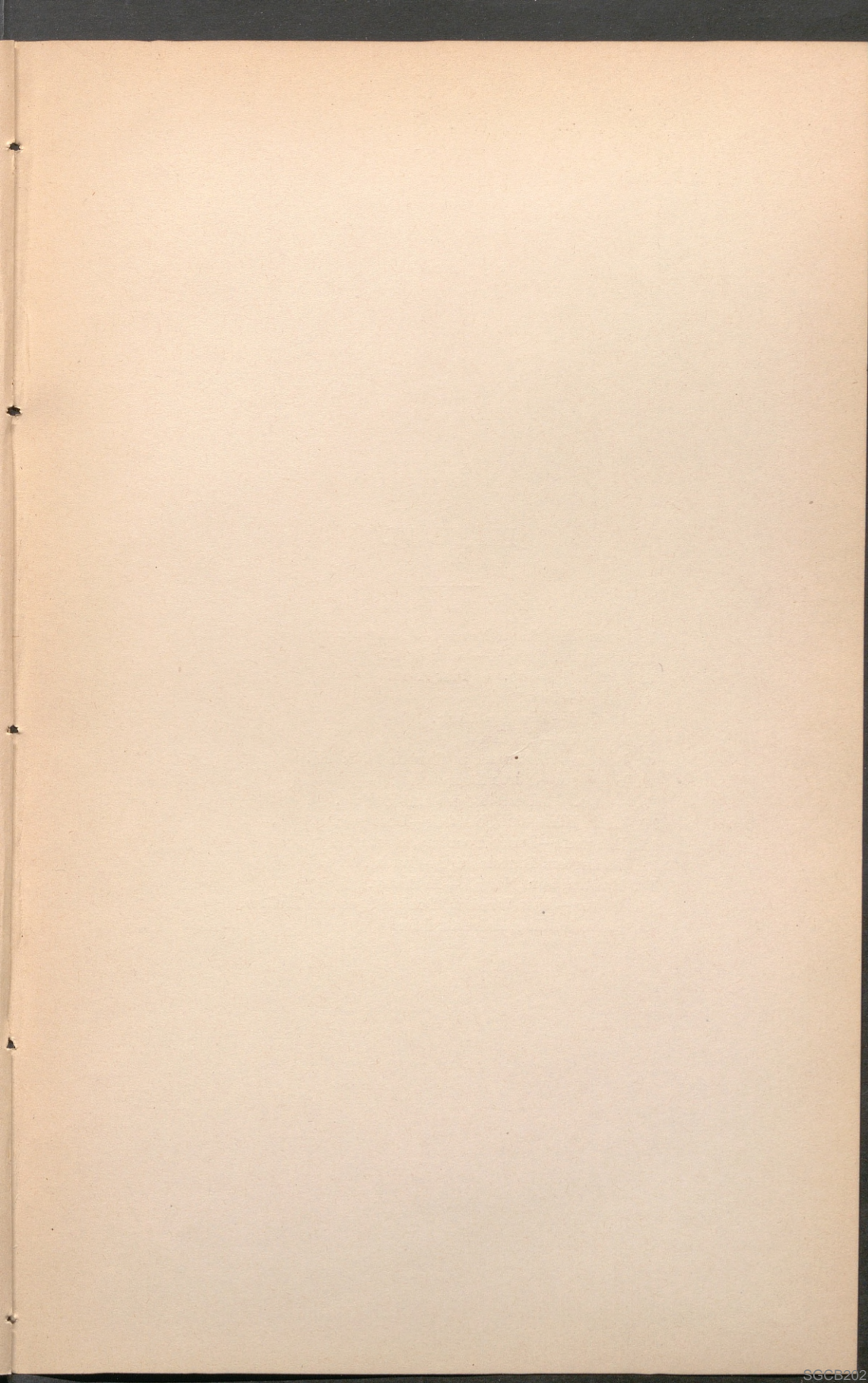
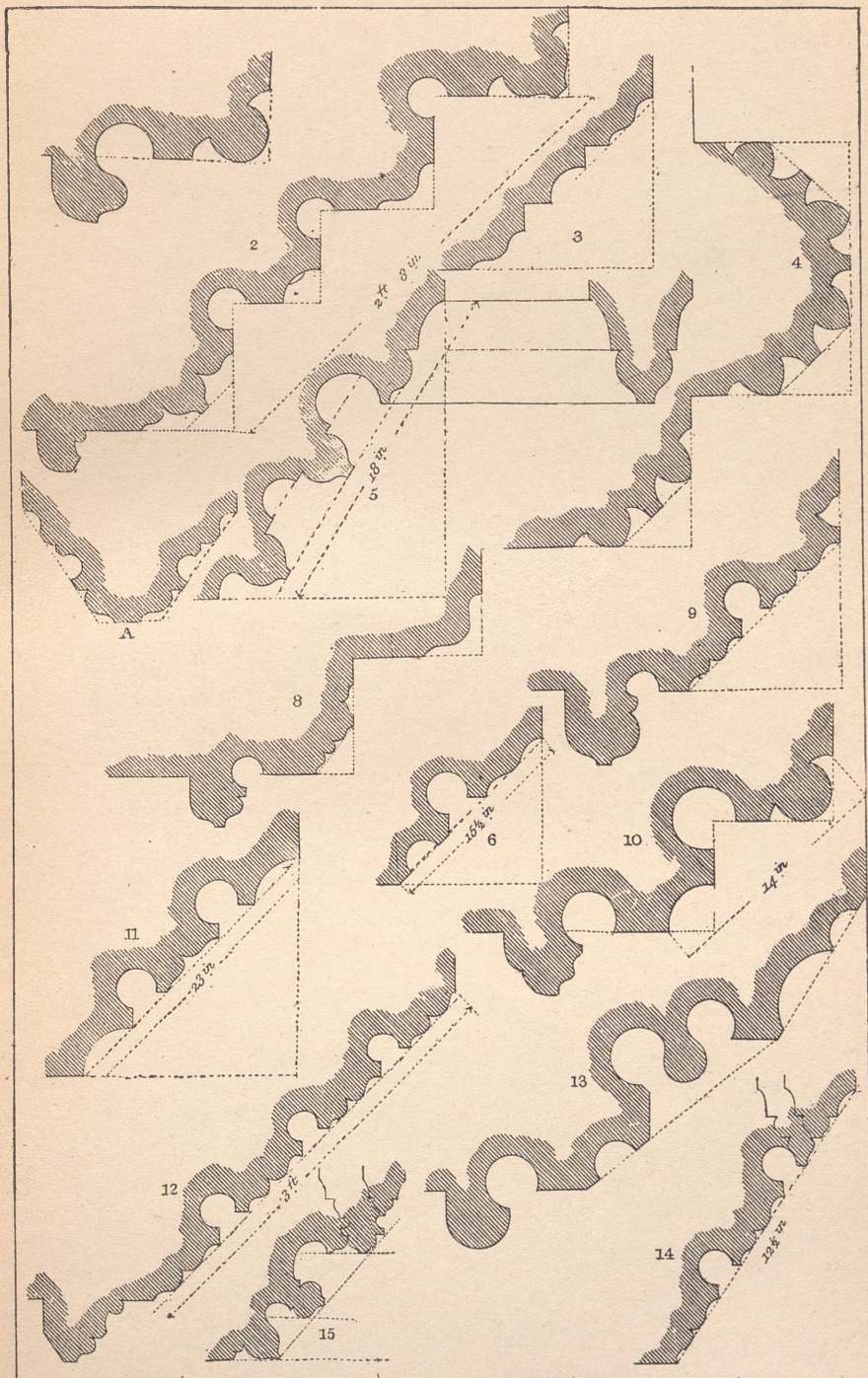




PLATE VI.

1. Little Ellingham, Norfolk—Doorway.
2. Hingham, Norfolk—West Door.
3. Do. do. Pier Arch.
4. Boston—Pier Arch.
5. Sleaford—Window Jamb.
6. Deopham—Doorway.
7. Boston—Monument in Church (A, Soffit).
8. Hingham—North Doorway.
9. Do. Double Ogee and Hollow.
10. Little Ellingham, Norfolk—Doorway.
11. Deopham—Inner Doorway, South Porch.
12. Benington, Lincolnshire—South Porch.
13. Hardingham, Norfolk—Archway.
14. Boston—East Window, Double Ogee and Hollow.
15. Stoke Golding, Leicestershire.





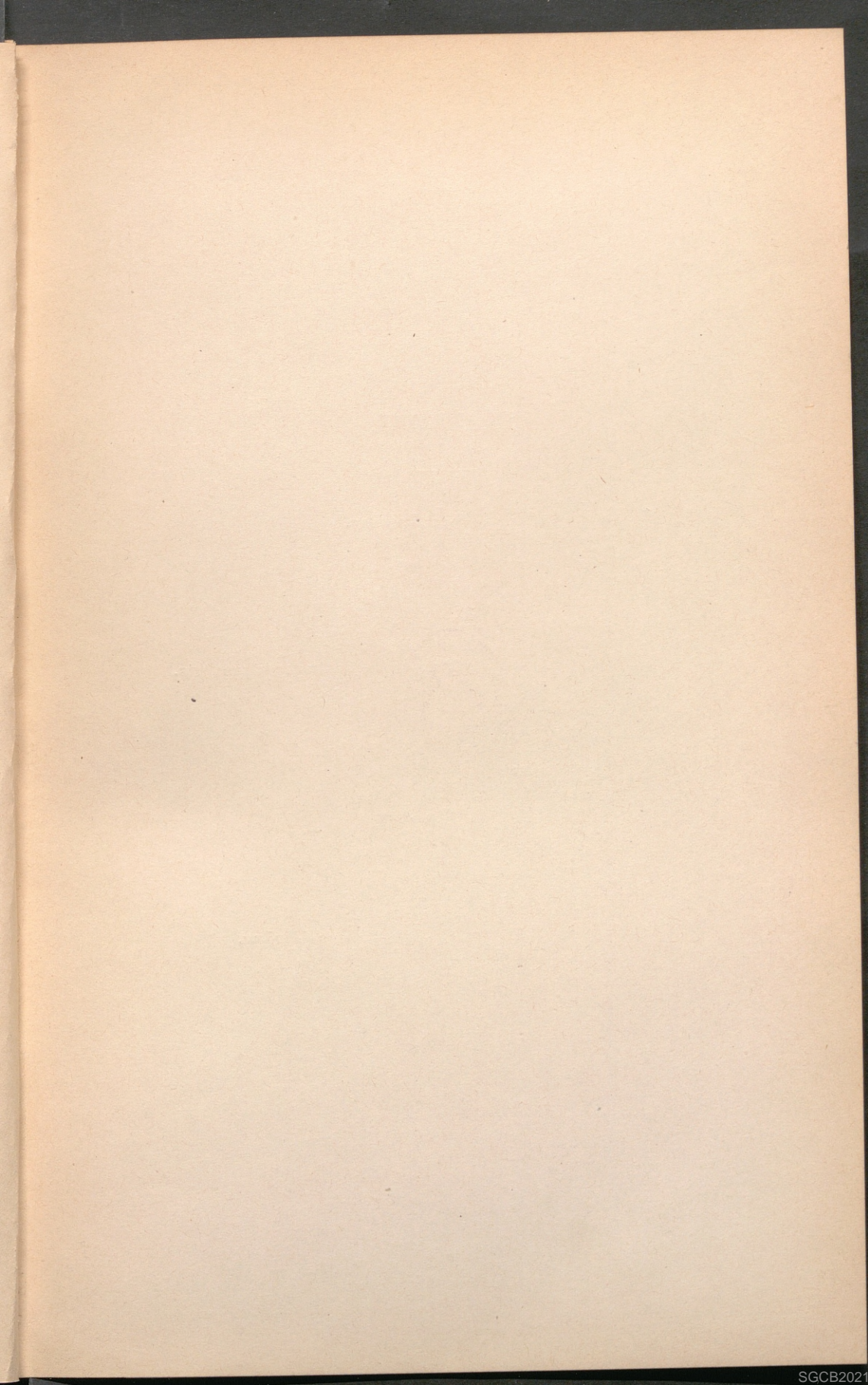
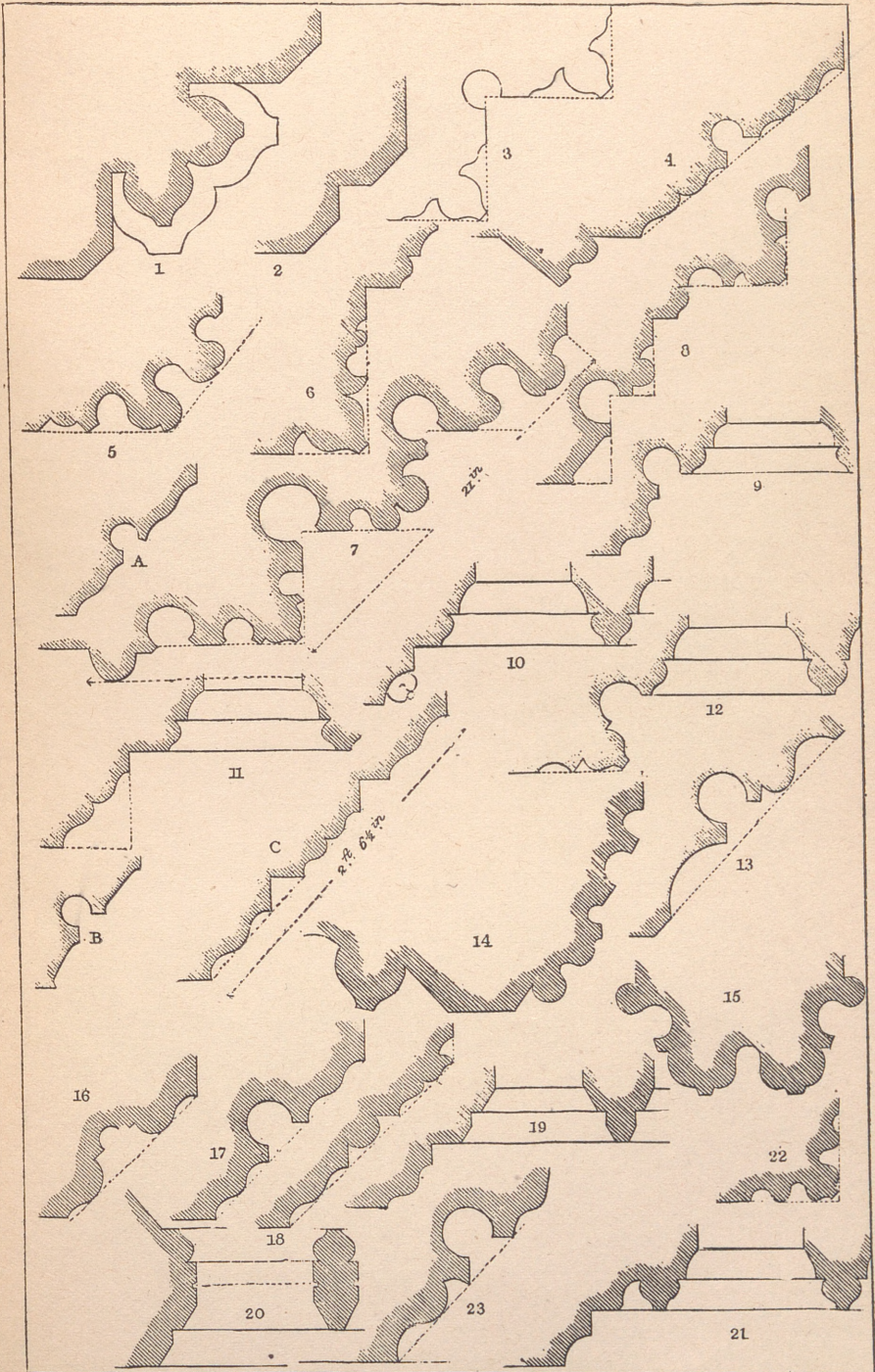


PLATE VII.

1. Llandaff Cathedral—West Doorway.
2. Diagram, Double Chamfer.
3. Trumpington—West Doorway.
4. Do. Pier Arch.
5. Rivaulx—Fragment.
6. Fen Stanton, Hunts—Window.
7. Northborough, Northants—Doorway.
8. Peterborough—Outer Archway, west entrance to precincts.
9. Yaxley, Hunts—Window.
10. Clipsham, Rutland.
11. Horbling, Lincolnshire.
12. Over, Cambridgeshire—Window in Chancel.
13. Northborough—Outer Porch Doorway.
14. Rivaulx, Yorkshire—Fragment.
15. Do. do. Groin Rib.
16. West Keal—Doorway.
17. Wave Molds and Hollow.
18. Swanton Morley, Norfolk.
19. Hingham, do. Window.
20. Trumpington—East Window.
21. Keddington (or Ketton), Suffolk—Chancel Window.
22. Thurlby, Lincolnshire—Piscina.
23. Langtoft, Lincolnshire—South Doorway.
 - A Shallow Wave Mold.
 - B Sunken Chamfer.
 - C Deopham—Belfry Arch.





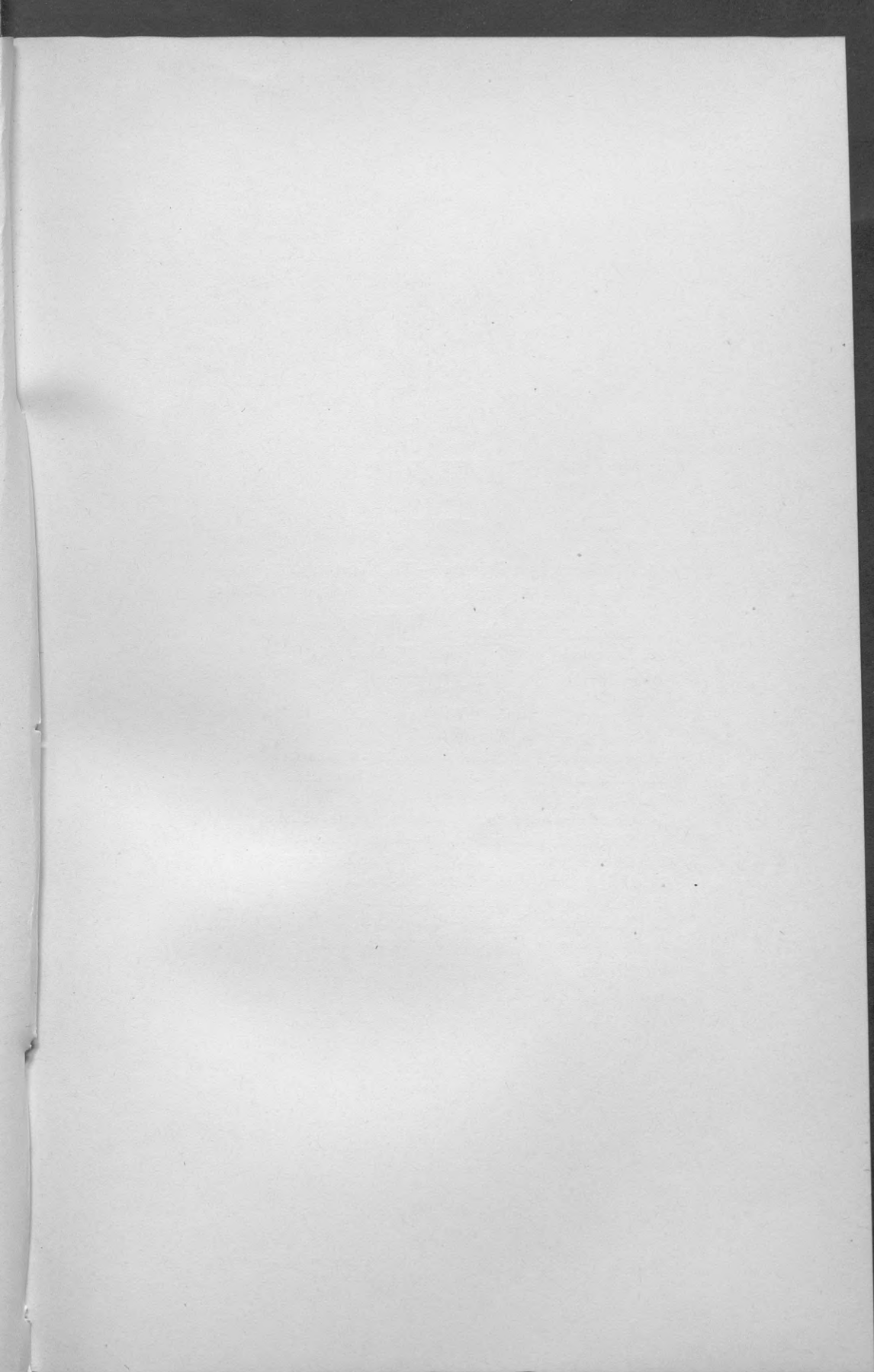
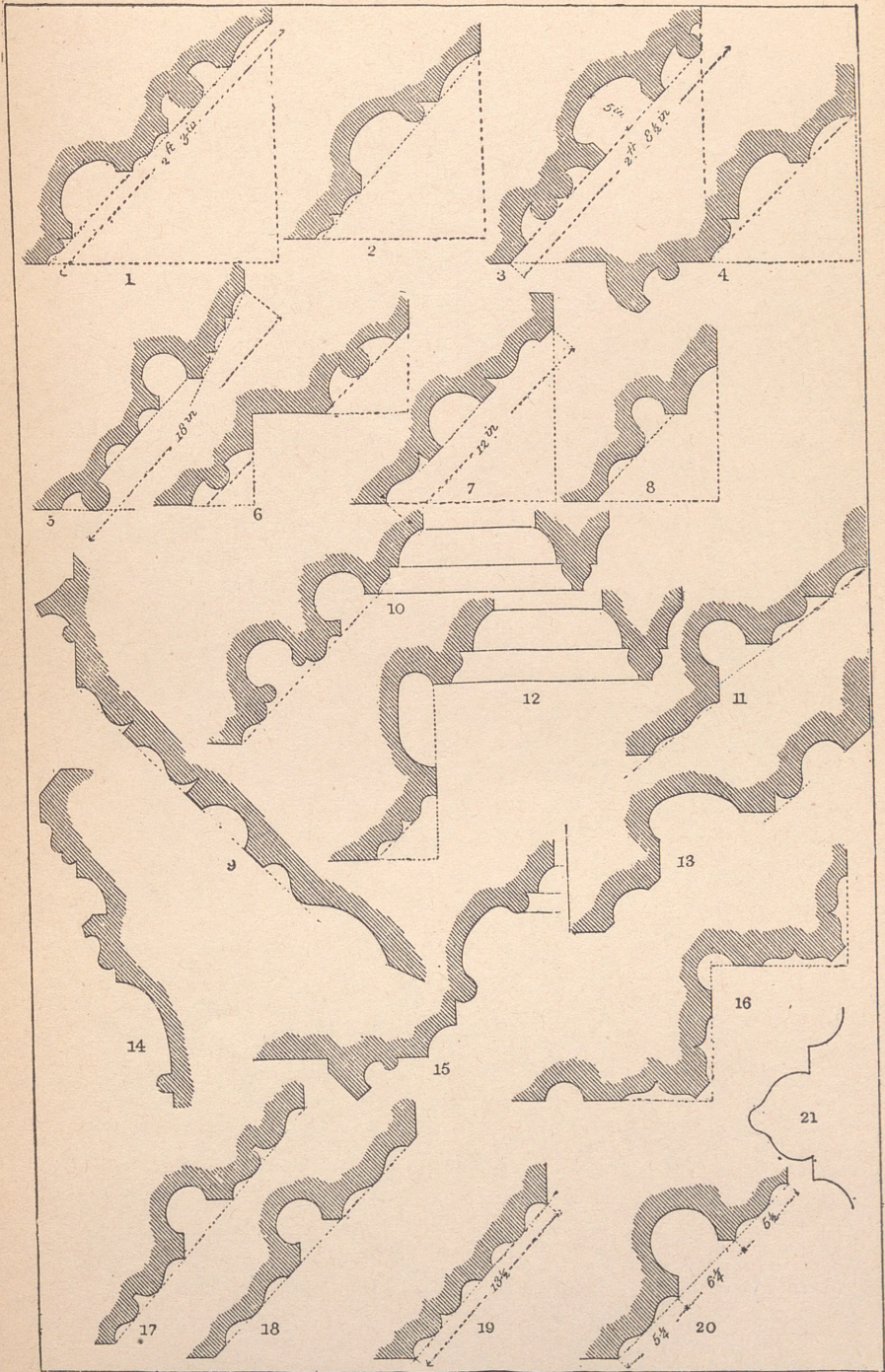


PLATE VIII.

1. Uffington, near Stamford—West Doorway.
2. Dereham, Norfolk—West Doorway in isolated Tower.
3. Saham Toney, do.—West Doorway.
4. Fishtoft, Lincolnshire.
5. Leverton, do. East Window.
6. Partney, do. Doorway.
7. Louth, do. Doorway.
8. Stewton, do. Window Jamb.
9. Lincoln—Oriel Window.
10. Chesterton, Cambridgeshire—East Window.
12. Lincoln Cathedral—South Choir Chapel.
13. St. Sepulchre's, Cambridge—Arch.
14. Great Gransden, near St. Neots, Hunts—Niche.
15. Stapleford, Cambridgeshire—East Window.
16. Great Shelford, do. Inner Doorway, South Porch.
17. Holy Trinity, Colchester—Pier Arch.
18. Long Melford, Suffolk—Pier Arch.
19. St. Martin's, Stamford—Doorway.
20. Do. do. Pier Arch.
21. Louth.

PERPENDICULAR.





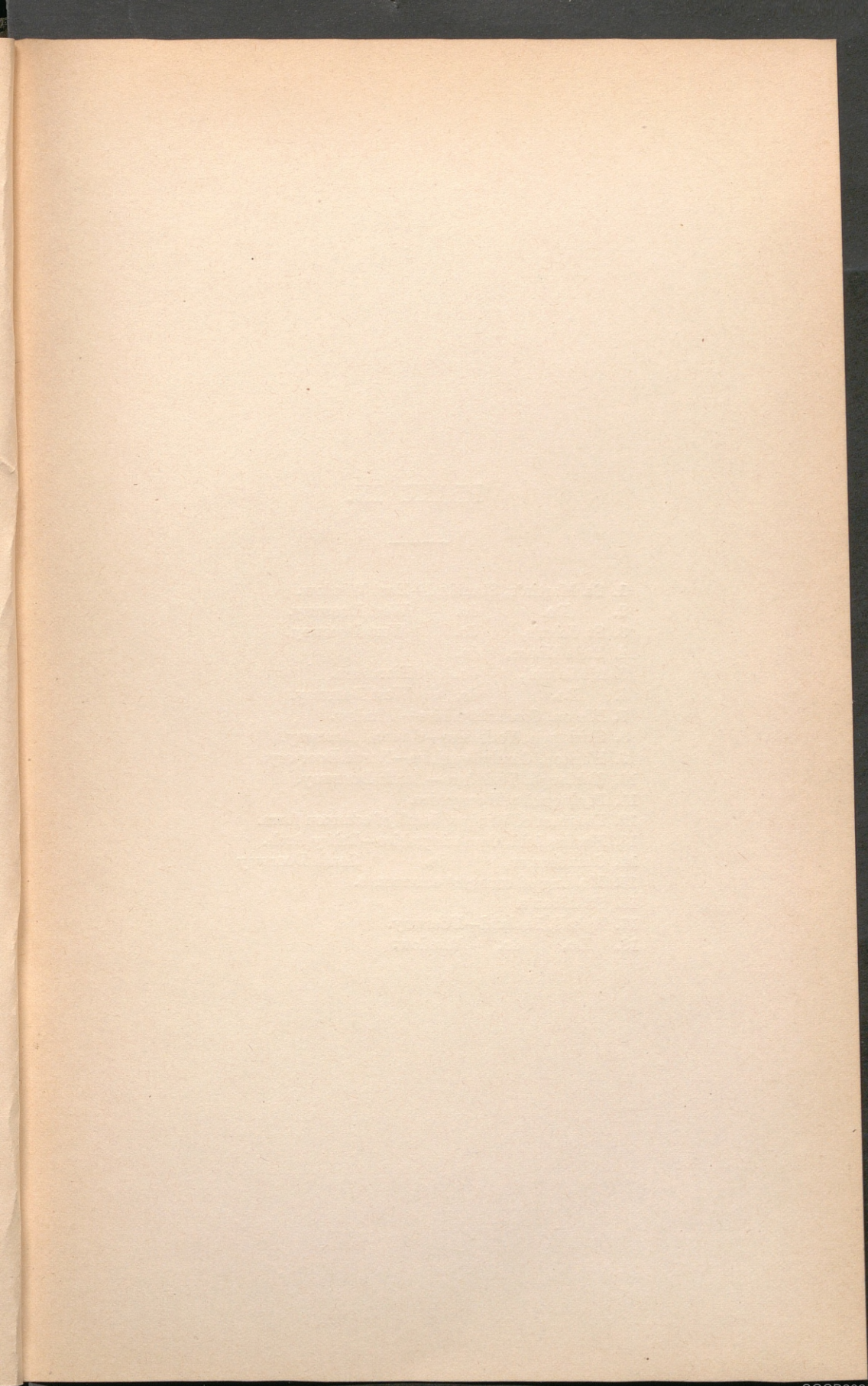


PLATE IX.

1. St. Martin's, Stamford—East Window.
2. Do. do. West Doorway.
3. St. John's, do. West Doorway.
4. Bede House, do.
5. All Saints', do. Pier Arch.
6. Do. do. West Doorway.
7. Histon, Cambridgeshire—Window.
8. Skirlaugh, Yorkshire—Chancel Doorway.
9. Harlton, Cambridgeshire—North Doorway.
10. Skirlaugh, Yorkshire—South Doorway.
11. Basingstoke, Hampshire.
12. Diagram of Window Jamb of common form.
13. Haslingfield, Cambridgeshire—Belfry Arch.
14. Granchester, do. South Doorway.
15. Molding of constant occurrence.
16. St. Alban's.
17. Ryhall, Rutland—Doorway.
18. Do. do. Window.

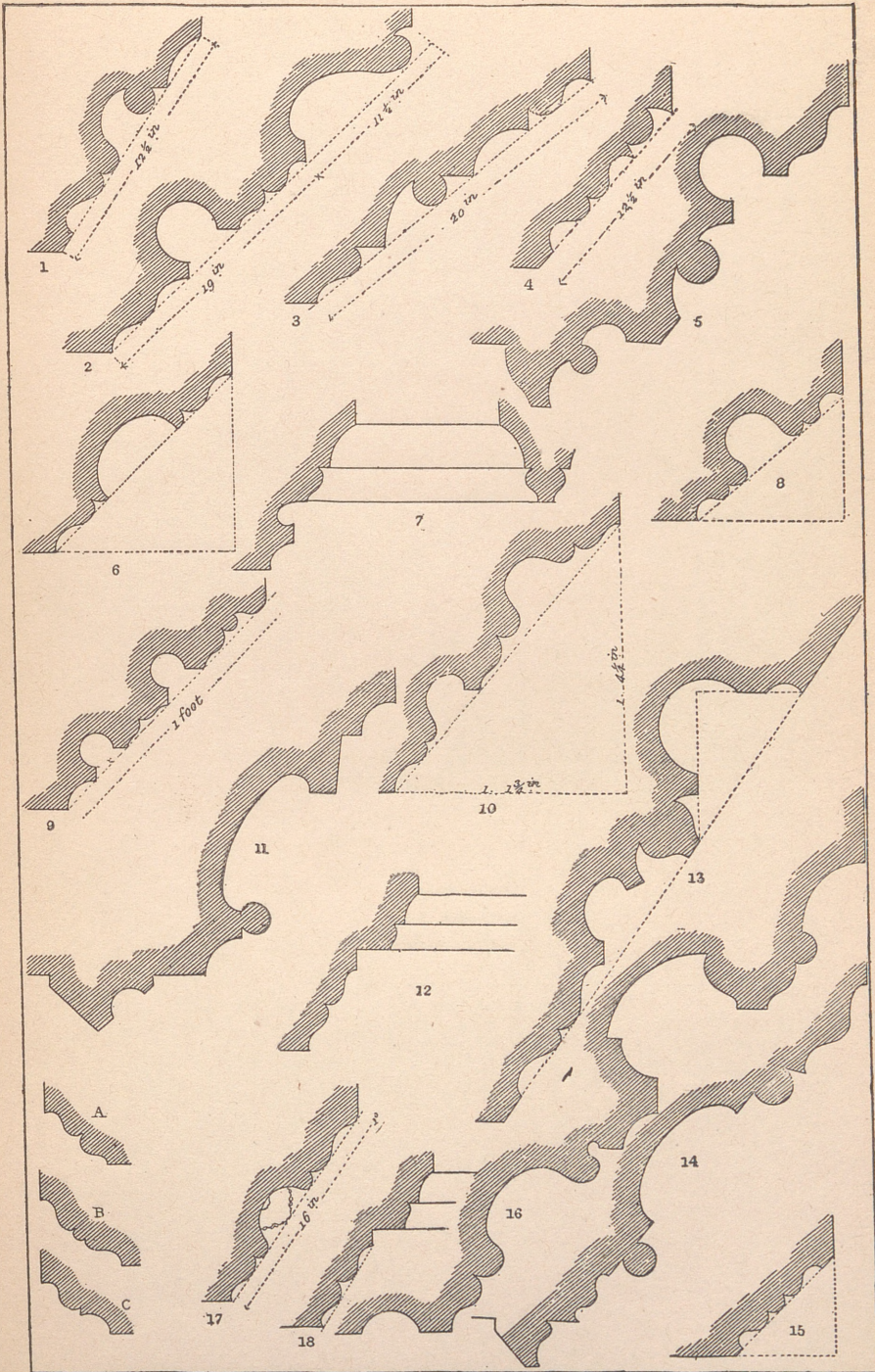
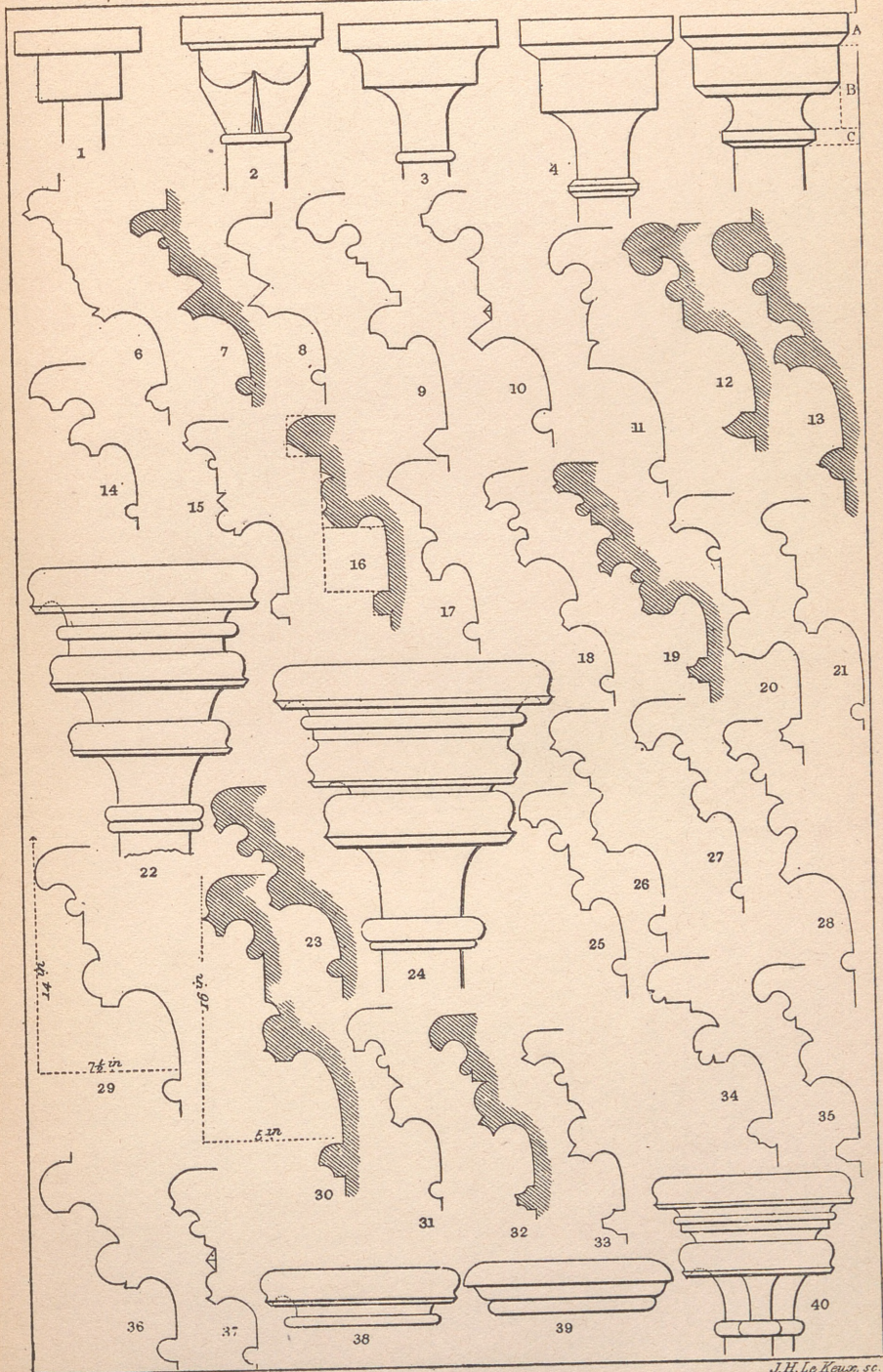




PLATE X.

1. Diagram of rudimentary Capital.
3. Laceby, Lincolnshire.
4. Middle Rasen, do.
5. Walesby, do.
7. Frieston, do.
8. Do. do.
9. Stickney, do.
10. Do. do.
12. Lincoln Cathedral.
13. Ruskington.
16. Great Abington, Cambridgeshire.
17. Thurlby, Lincolnshire.
18. Furness Abbey, Chapter House.
19. Tintern Abbey.
22. Furness Abbey.
23. Bolton Abbey, Yorkshire.
24. Do. do.
26. Do. do.
28. Tintern Abbey.
29. Arreton, Isle of Wight.
30. Saffron Walden, Essex.
37. Bolton Abbey.
38. Early English Abacus.
39. Decorated Abacus.
40. Early English Capital.





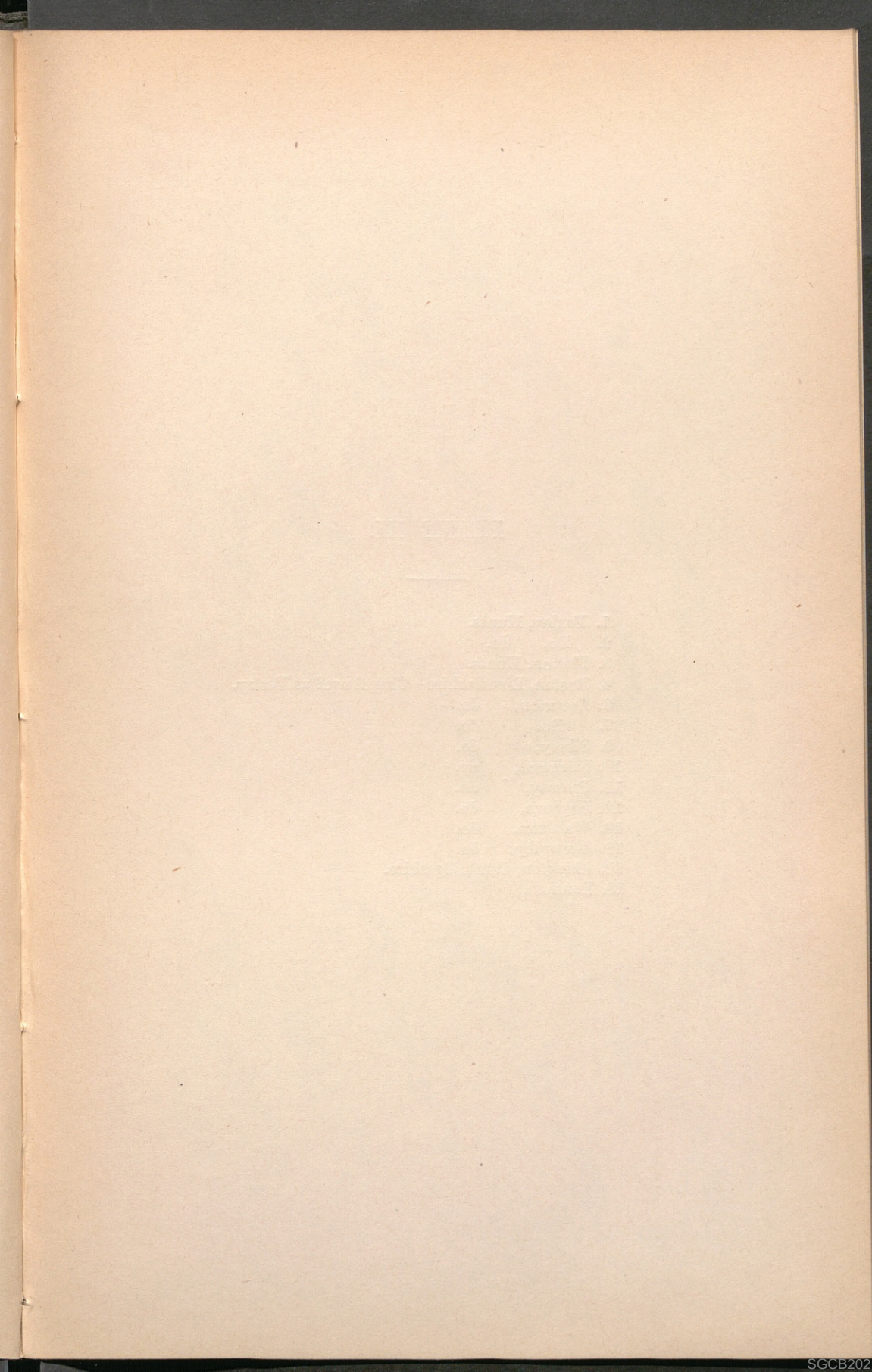
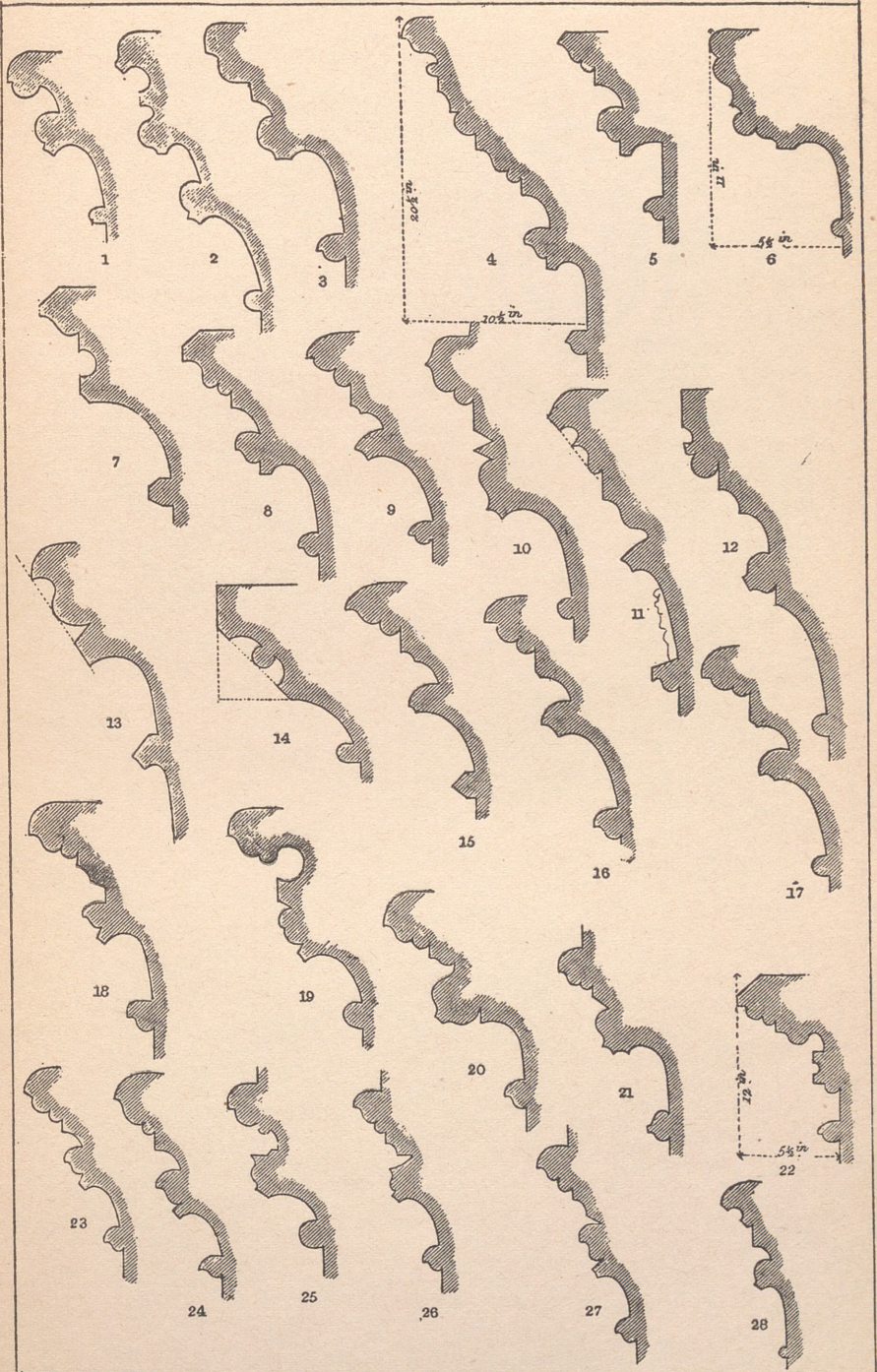


PLATE XI.

1. Yaxley, Hunts.
2. Do. do.
3. Fletton, Hunts.
4. Boston, Lincolnshire—Chapel used as Vestry.
6. Leverton, do.
7. Do. do.
9. Sibsey, do.
10. Stickford, do.
11. Partney, do.
12. Legburn, do.
13. Waltham, do.
18. Aswardby, do.
22. Abington, Cambridgeshire.
28. Louth.

DECORATED CAPITALS.

Plate XI.



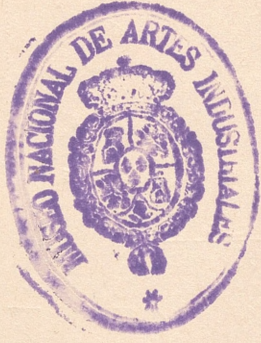
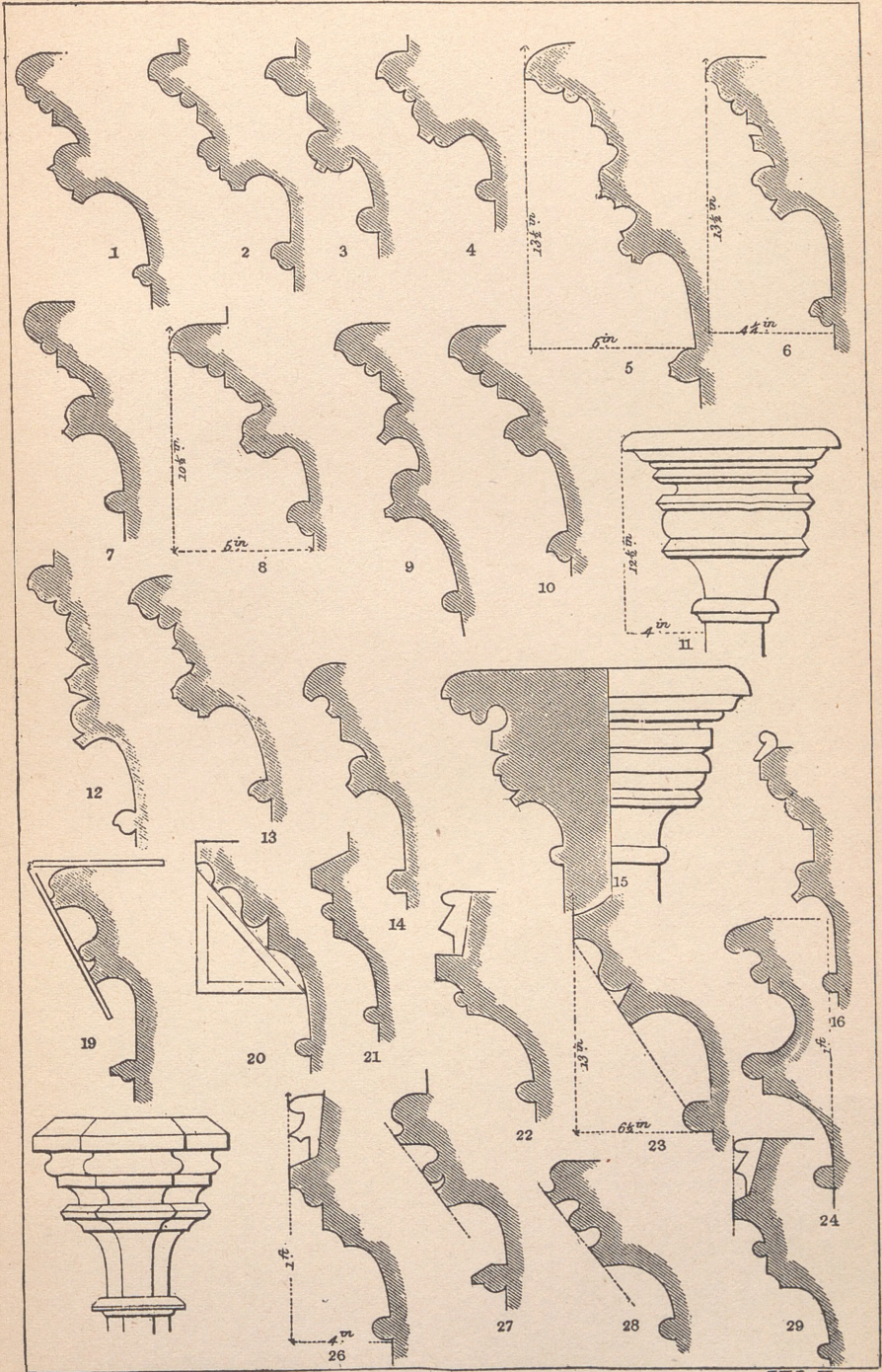


PLATE XII.

11. Trumpington, Cambridgeshire—Capital of Nave Pie
13. Little Shelford, do. Monument.
14. Maxey, Northamptonshire.
15. Hingham, Norfolk—Nave Piers.
16. Careby, Lincolnshire.
19. Uffington, do.
22. }
23. } St. Martin's, Stamford.
24. }
26. }
27. } St. John's, do.
28. St. George's, do.
29. Bede House, do.





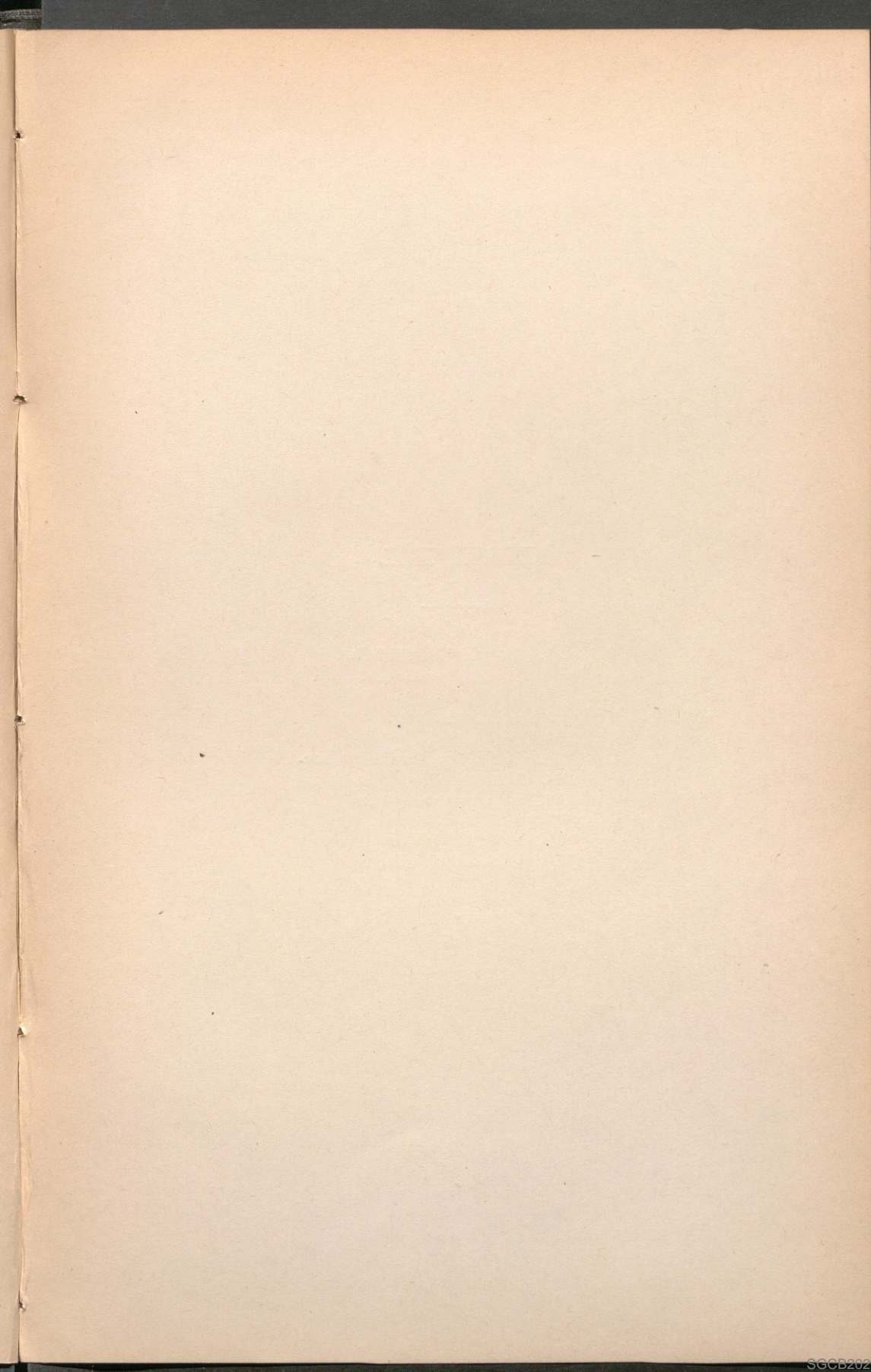
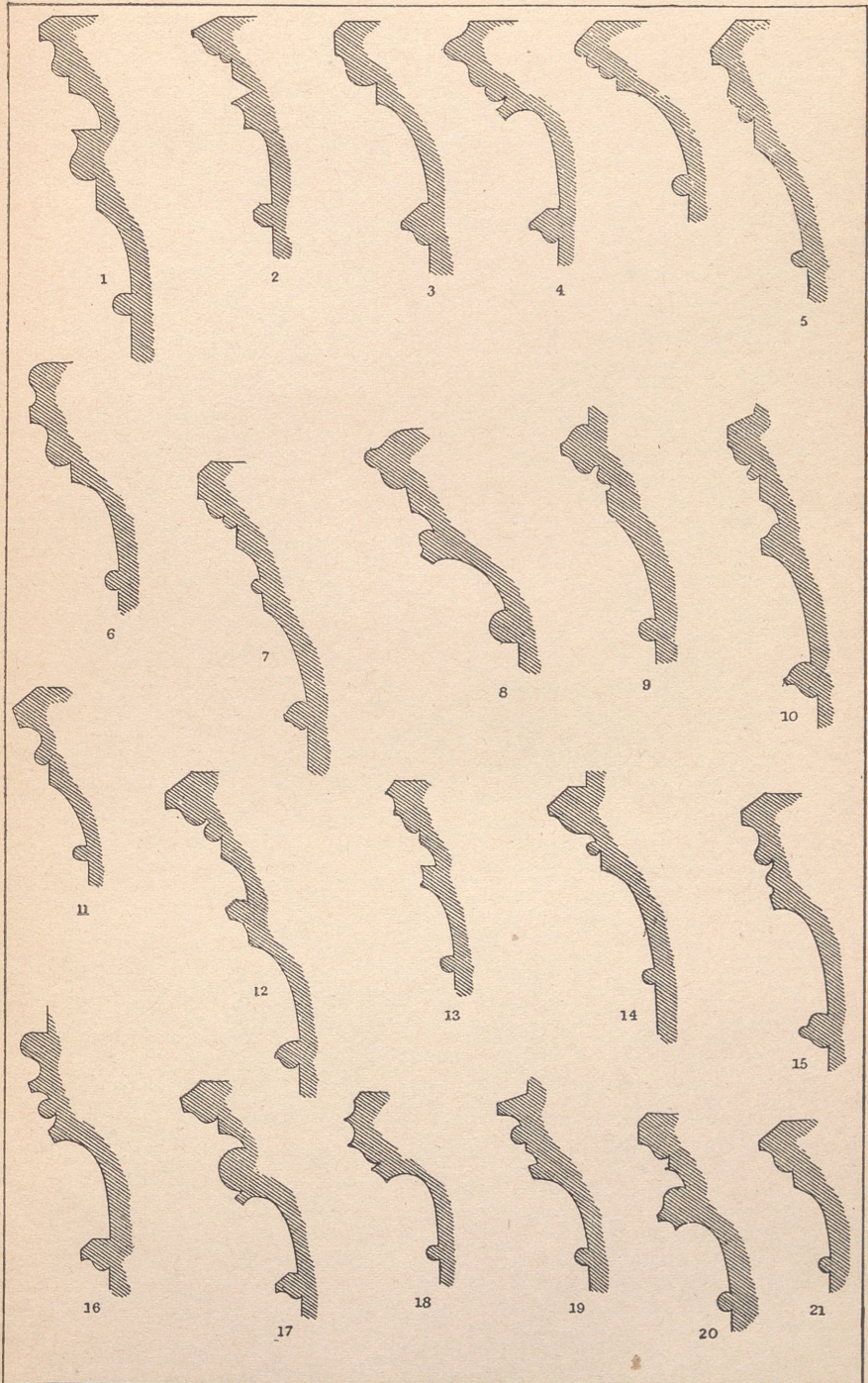


PLATE XIII.

1. Long Melford, Suffolk.
4. Louth, Lincolnshire.
8.)
9.) Colchester.
12.)
13. Fen Ditton, Cambridgeshire.
14. Harston, do.
16. Dry Drayton, do.
17. Mattishall, Norfolk.
18. Elsworth Hall, do.
19. Saham Toney, do.

PERPENDICULAR CAPITALS

Plate XIII



J.H. Lo Koux sc.



PLATE XIV.

1. } Attick Base.
2. }
3. } Italian Gothic Bases. from Willis's Architecture of the Middle
4. } Ages.
5. Canterbury Cathedral.
6. Byland Abbey—Central Piers.
7. Peterborough Cathedral.
8. Do. do.
9. Rivaulx Abbey—Choir Columns.
16. Ely Cathedral.
17. Lincoln Cathedral—Base of Great Piers.
18. Do. do.
20. Furness Abbey.
26. Ely Cathedral—Galilee.
27. Skelton, near York.
28. Tintern Abbey.
29. Furness Abbey.
30. Do. do.
33. Tintern Abbey—Nave Piers.
35. Coton, Cambridgeshire.
36. Ely Cathedral—Lady Chapel.
37. St. Mary's Abbey, York.
38. Ely Cathedral—Lady Chapel.
39. Wells Cathedral—Doorway.
40. Do. do. Central Column, Chapter House.
41. Over and Histon, Cambridgeshire.
42. Trumpington—Nave Pier.
43. Bottisham, Cambridgeshire—Nave Piers.
44. Boston, Lincolnshire.
45. Fishtoft, do.

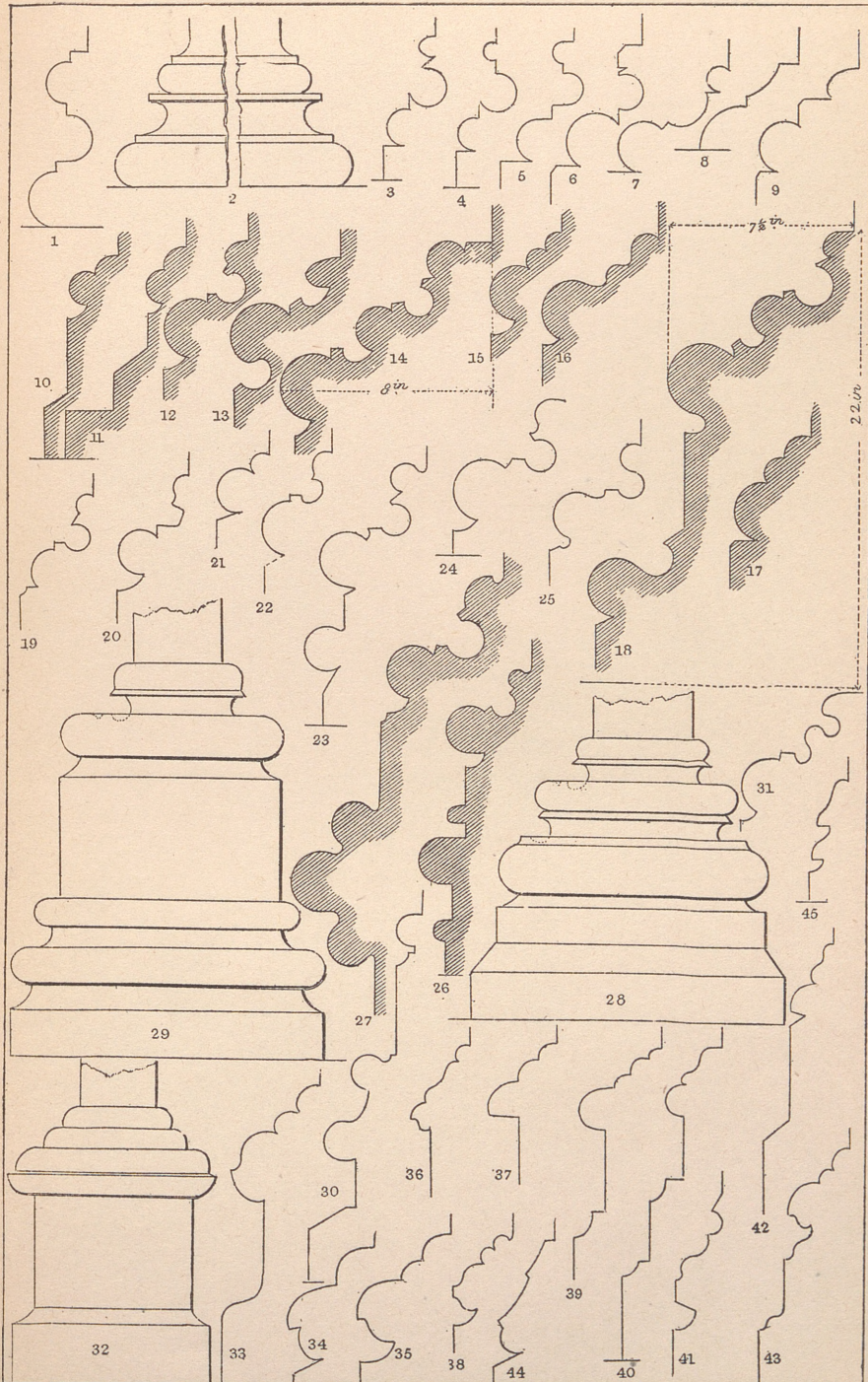
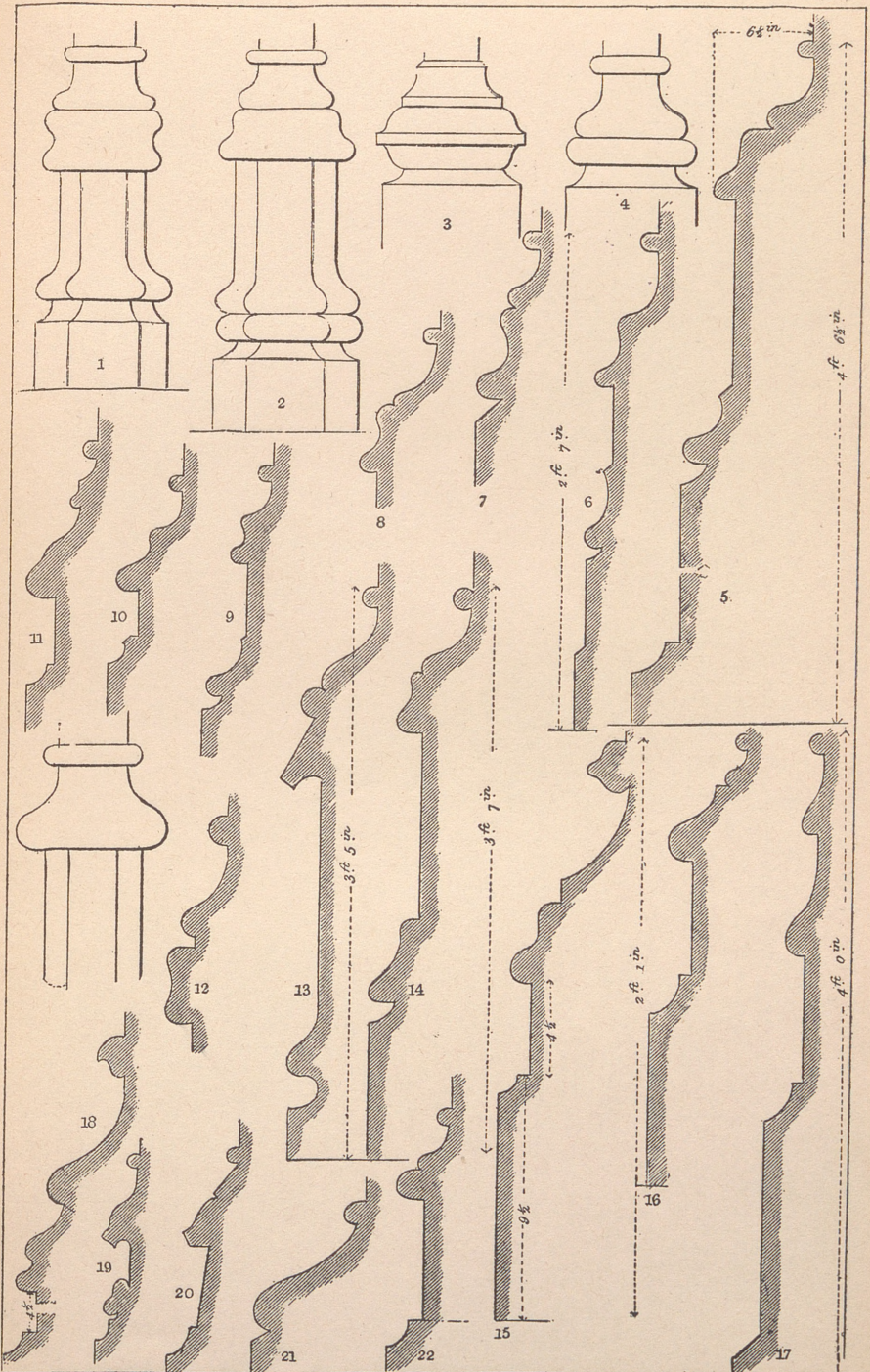






PLATE XV.

1. Crosby Hall.
2. Do. do.
3. Over, Cambridgeshire—Chancel.
4. Peterborough Cathedral—Lady Chapel
5. Louth.
6. Carbrook, Norfolk.
7. Saham, do.
8. Dereham, do.
9. Norwich Cathedral.
10. Mattishall, Norfolk.
11. Swanton Morley, do.
12. Colchester.
13. All Saints', Stamford.
14. St. John's, do.
15. Colchester.
16. St. Alban's Abbey.
17. Haslingfield, Cambridgeshire.
18. Holy Trinity, Colchester.
20. St. Edward's, Cambridge.
21. Herne, Kent.
22. Saffron Walden, Essex.





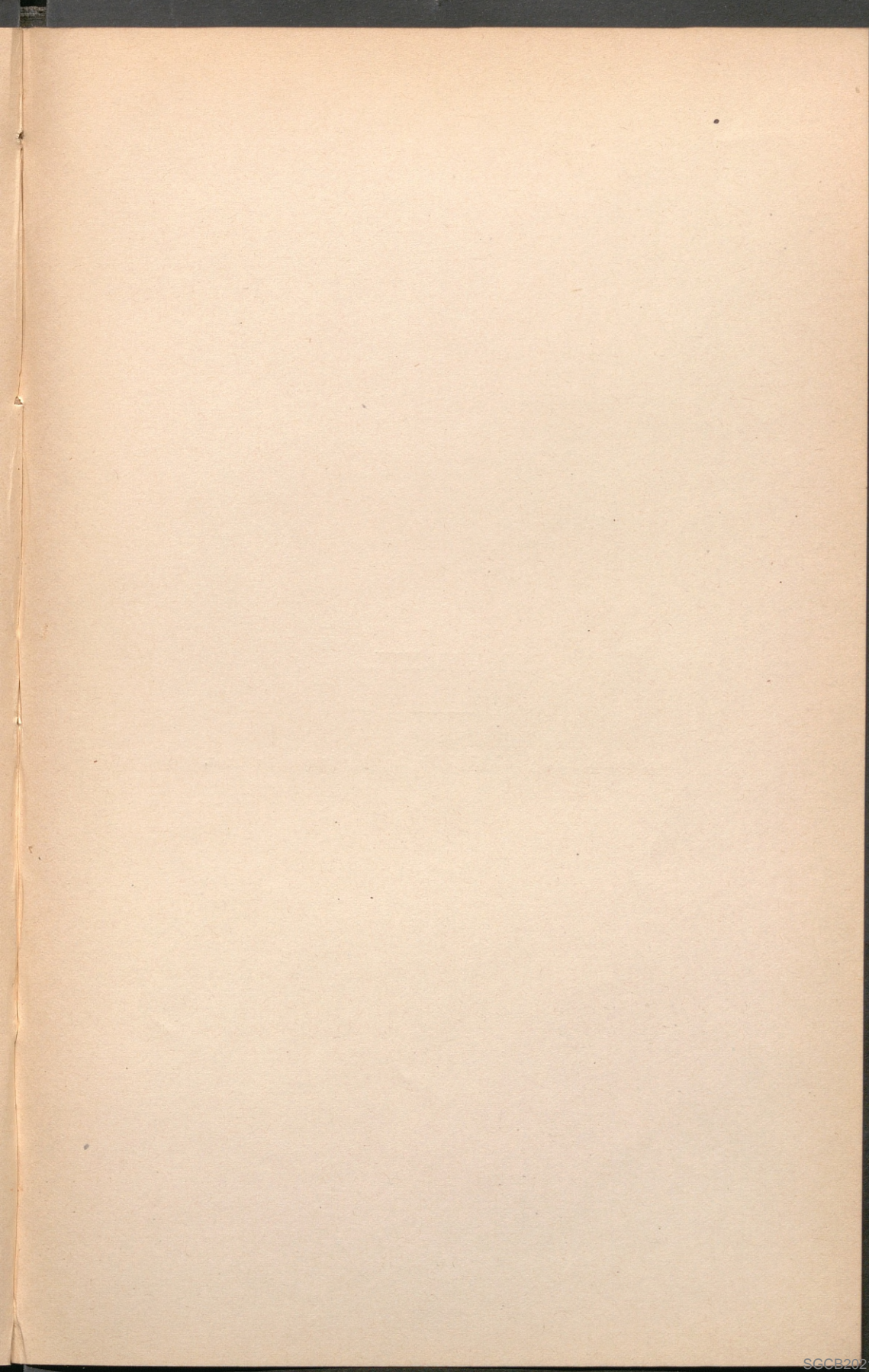
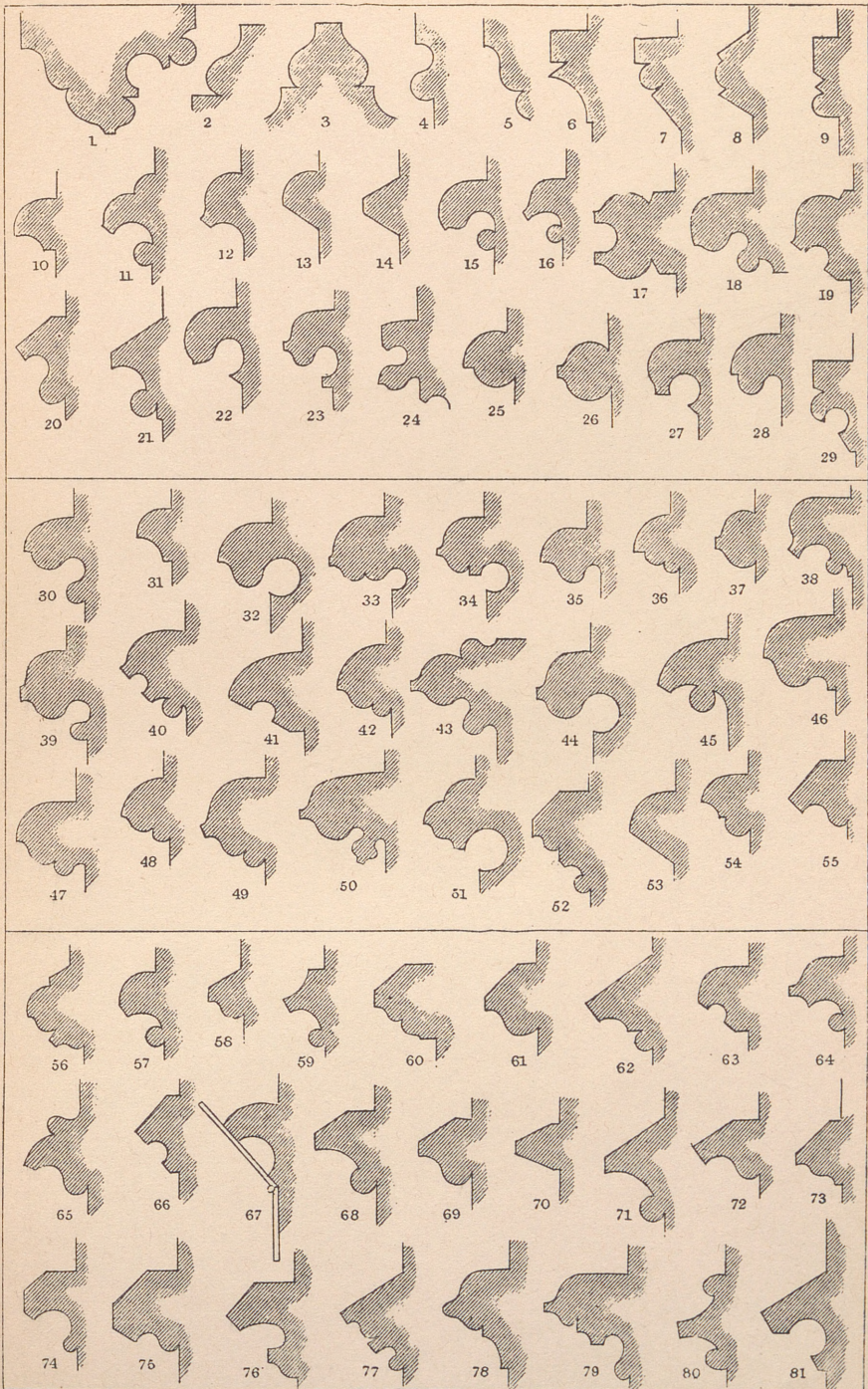


PLATE XVI.

Examples of Strings, Hood Molds, &c., from various sources.

STRINGS AND LABELS.



J.H. Le Cour. sc



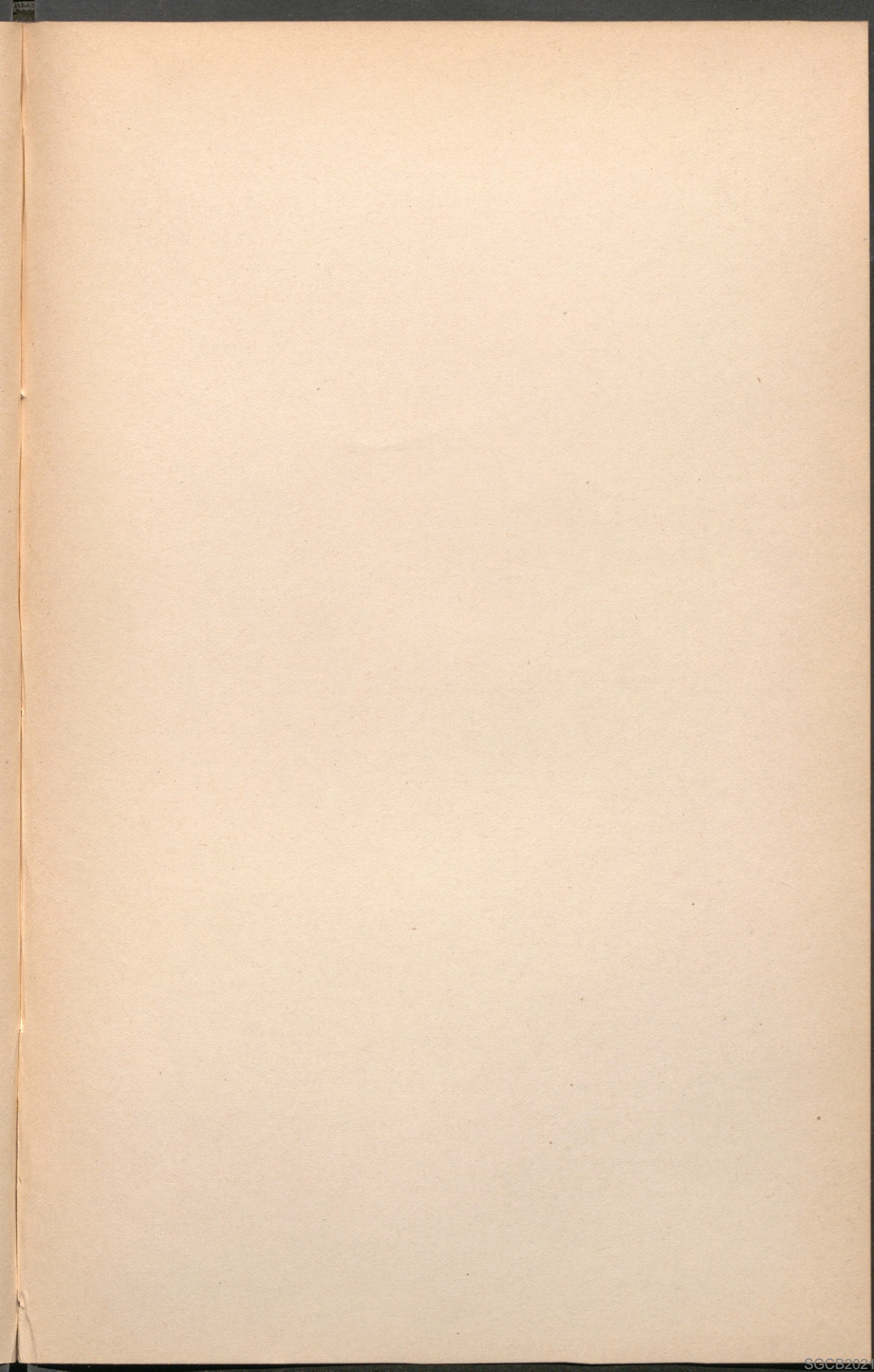
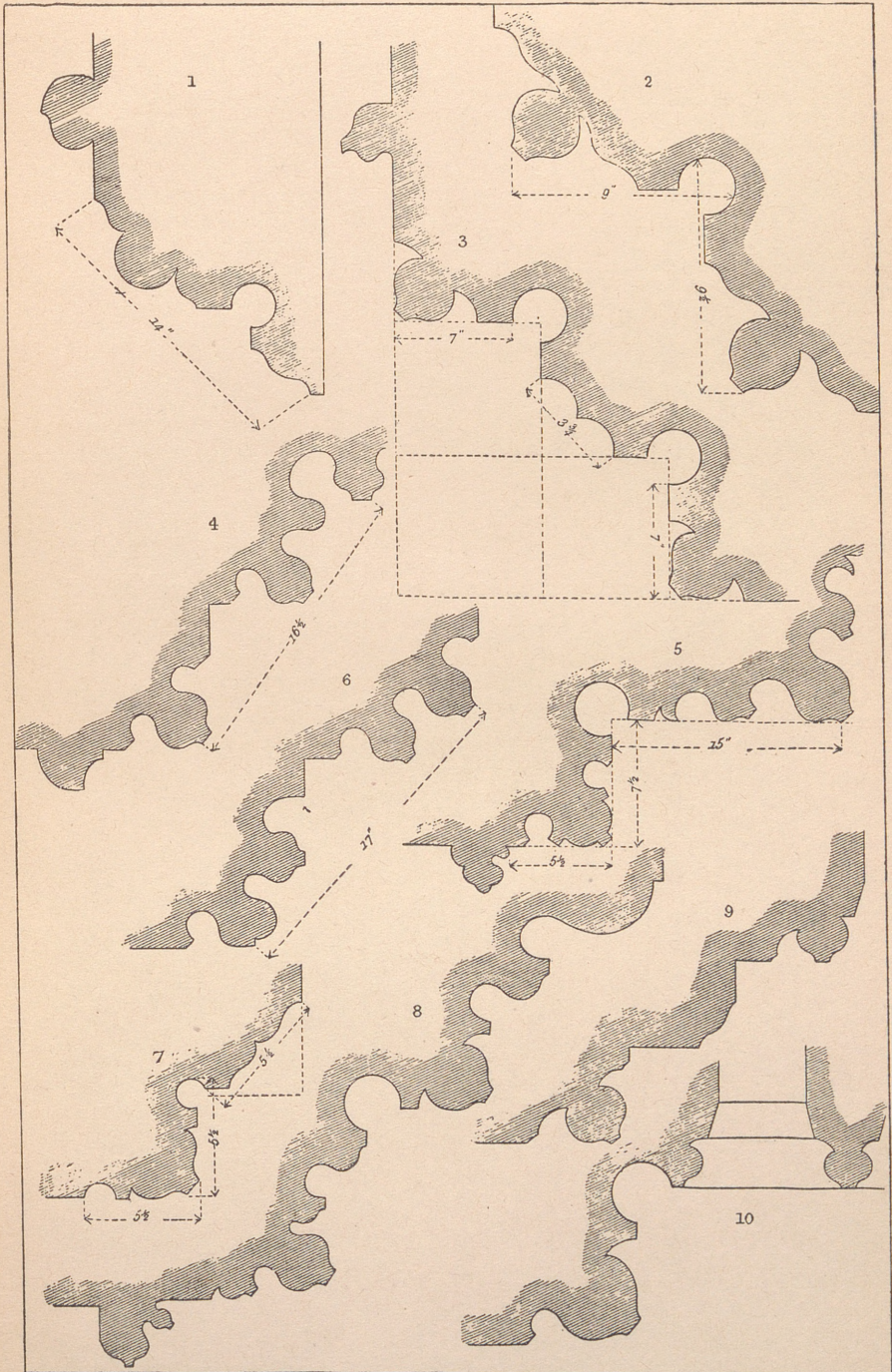


PLATE XVII.

1. Bottisham, Cambridgeshire—South Porch.
2. Do. do. North Porch.
3. Do. do. South Porch, Inner Doorway.
4. Grantham, Lincolnshire—South Aisle Window.
5. Langham, Rutland—Doorway.
6. Grantham, Lincolnshire—South Aisle Window.
8. Over, Cambridgeshire—South Porch.
9. Grantham—South Aisle Window.
10. Grantham—Window Jamb.





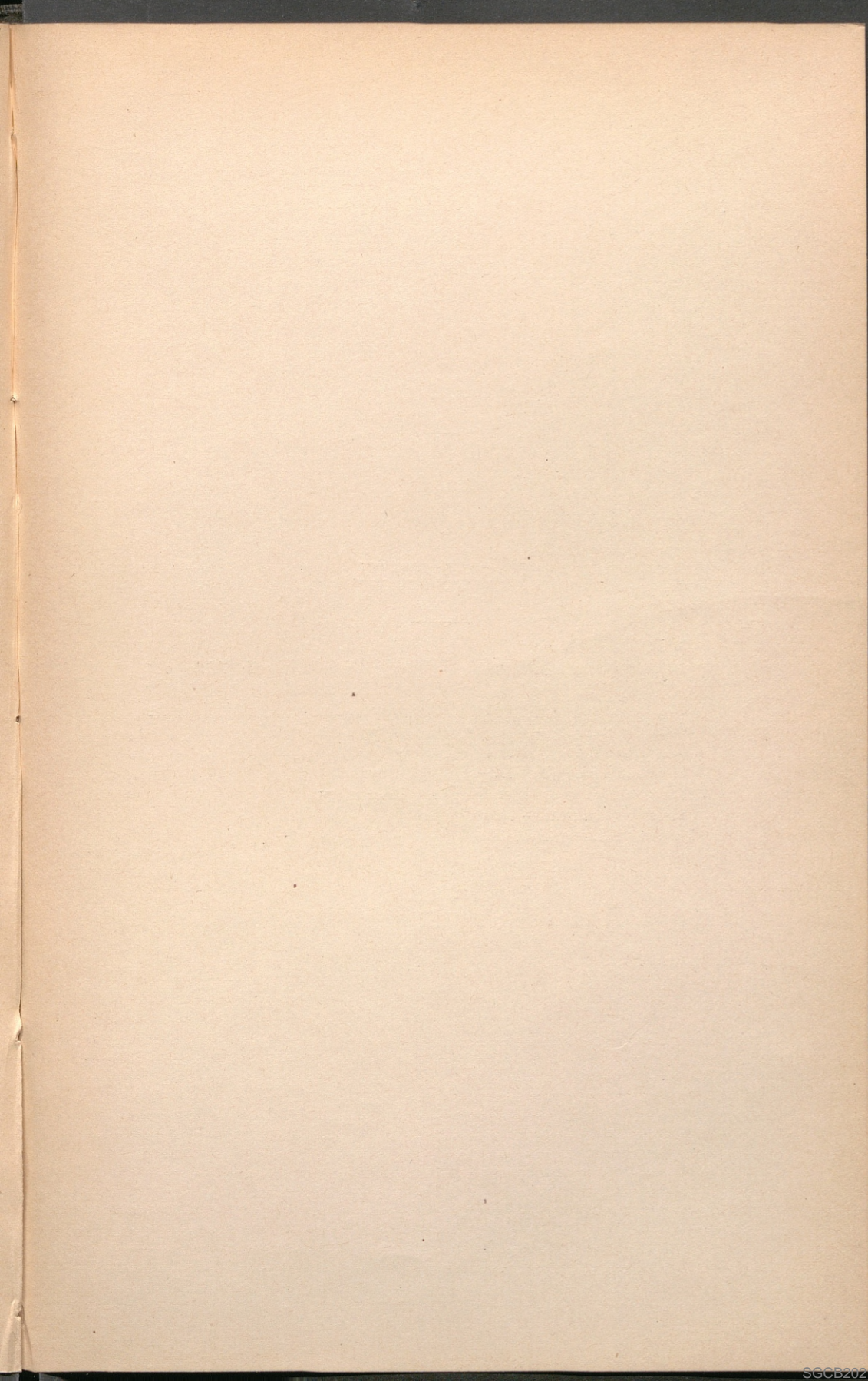
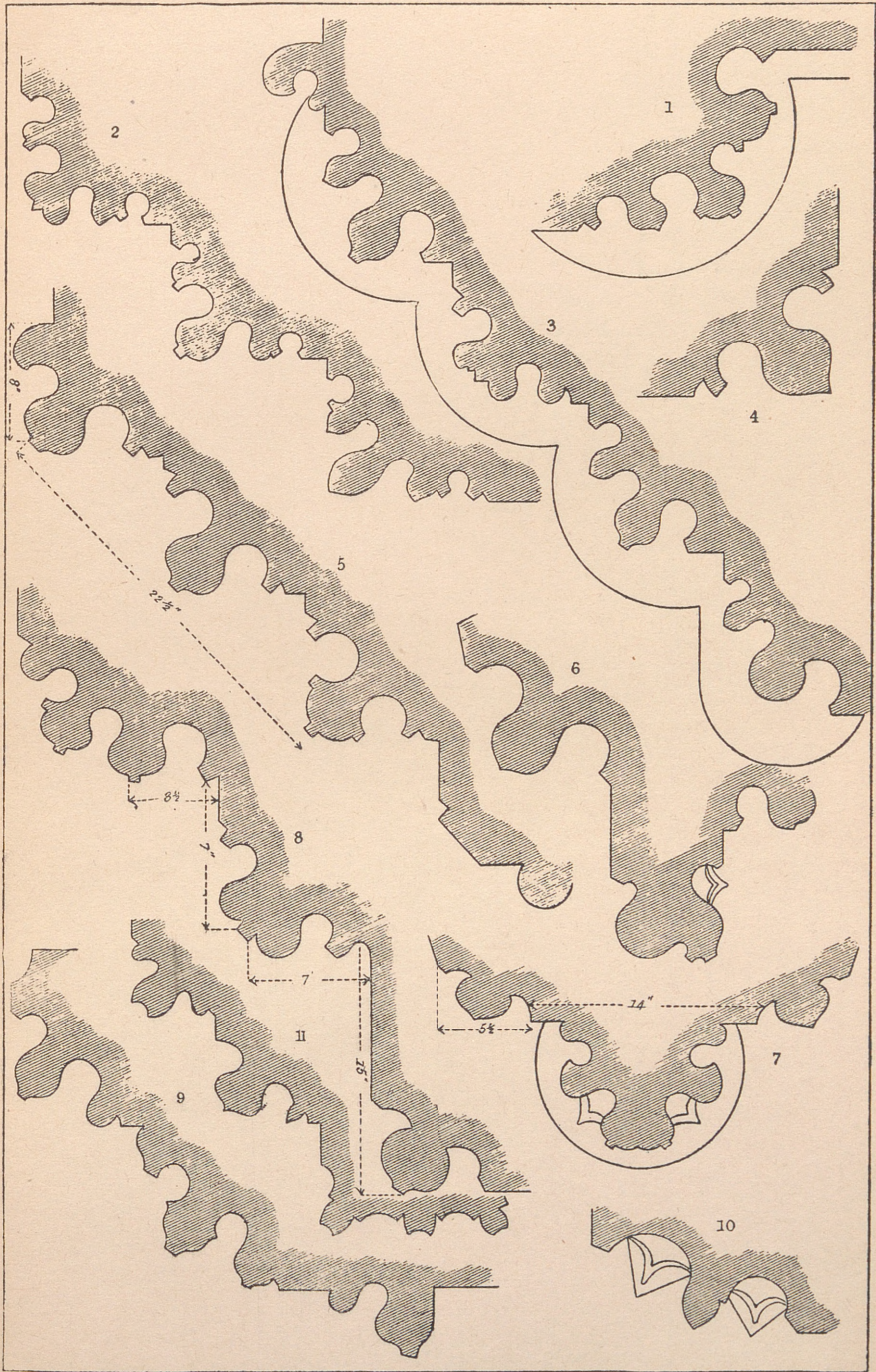


PLATE XVIII.

1. Rivaulx Abbey.
2. Peterborough Cathedral—Doorway opposite South Aisle of Nave: half-inch scale.
3. Do. do. Doorway in Cloister: half-inch scale.
4. Rivaulx Abbey—Window Jamb.
5. Do. do. Ruined Doorway
6. Castle Rising, Norfolk—East Window.
7. Beaulieu Abbey—South Transept Refectory.
8. Ripon Cathedral—Choir.
10. Castle Rising, Norfolk.



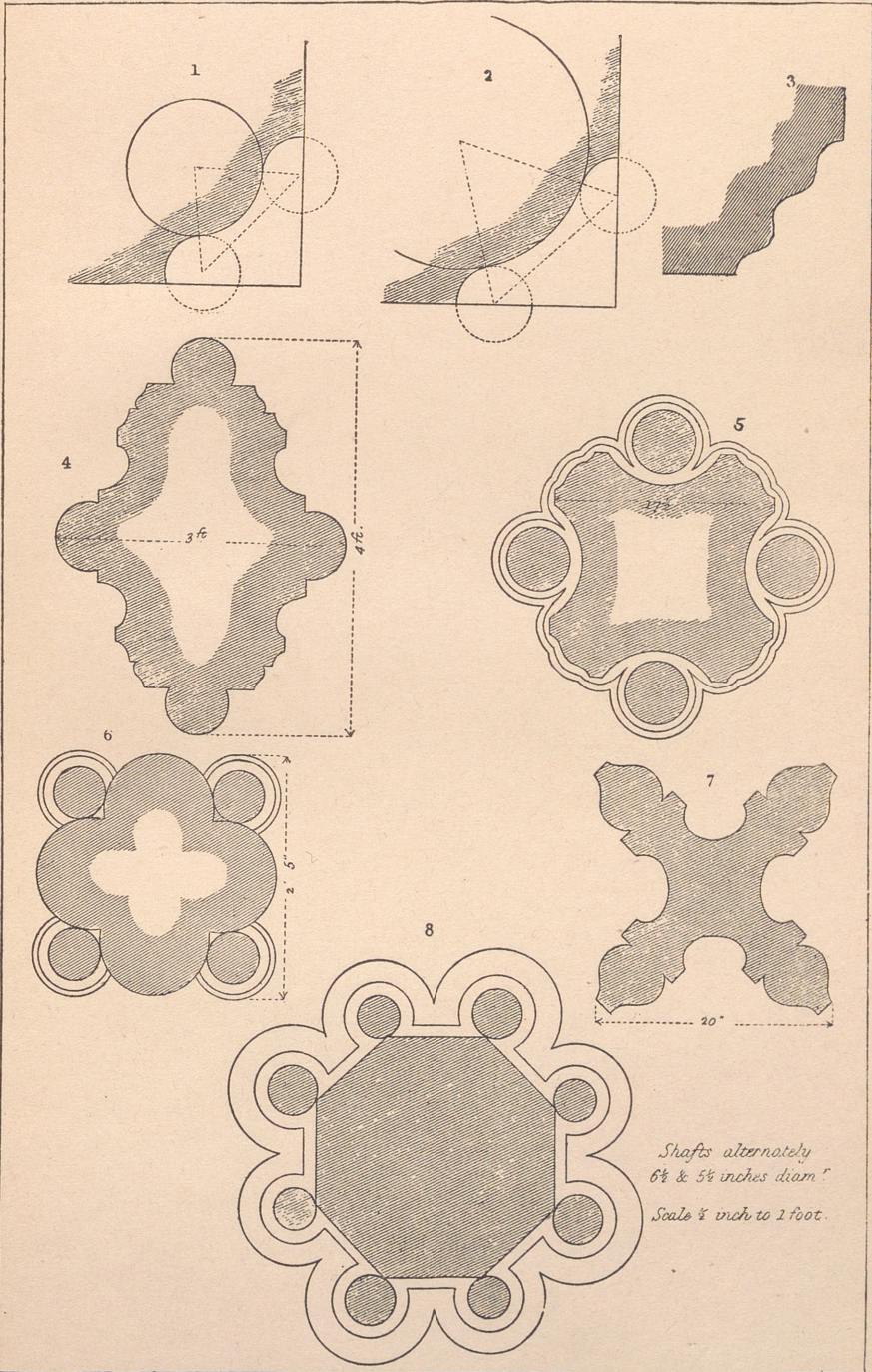
J. T. Woodruff sc.





PLATE XIX.

1. } Diagrams showing the formation of the Wave Molding.
2. }
3. Bottisham, Cambridgeshire—East Window, South Aisle.
4. Saffron Walden, Essex.
5. Stretton, Rutland.
6. Grantham, Lincolnshire.
7. Do. do. Crypt.
8. Fountains Abbey—Lady Chapel.



Shafts alternately
 6 1/2 & 5 1/2 inches diam.
 Scale 1/2 inch to 1 foot.



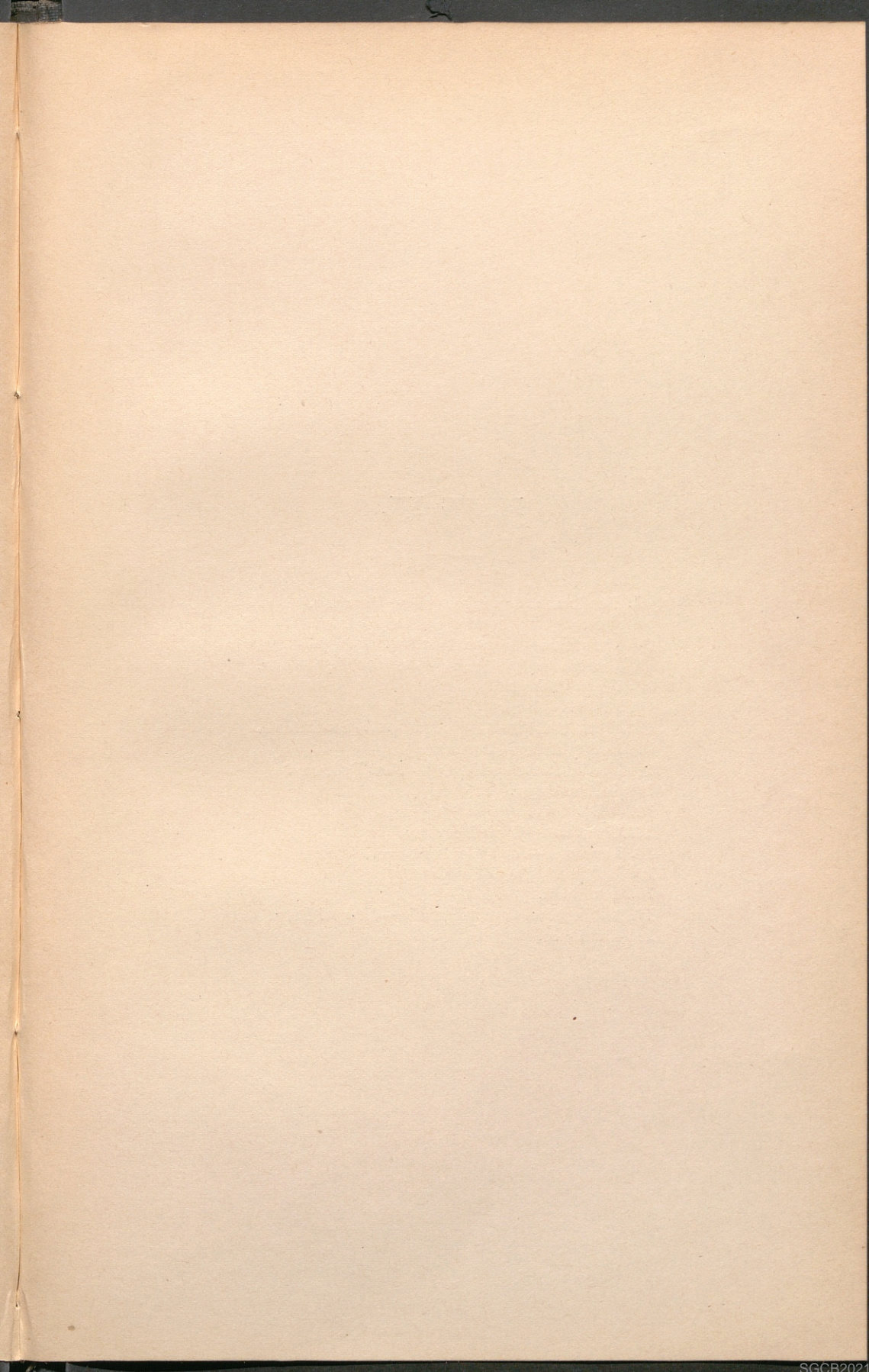




PLATE XX.

1. Landbeach, Cambridgeshire—Doorway.
2. Quy, do. Window.
3. Grantham—Chancel Window.
Peterborough Cathedral—Archway in Cloister.
5. Ripon Cathedral.
6. Rivaulx Abbey.
7. Ripon Cathedral—Window Jamb, South Aisle.
9. Bolton Abbey—Doorway.
10. Newton, near Cambridge—West Doorway.
11. Bolton Abbey.
12. Do. do.
13. Grantham—Choir Doorway
14. Lancaster—Arch Mold of Nave.
15. Bolton Abbey—Monument.
16. Grantham.
17. Willingham, Cambridgeshire—Chancel Door.
18. Grantham.

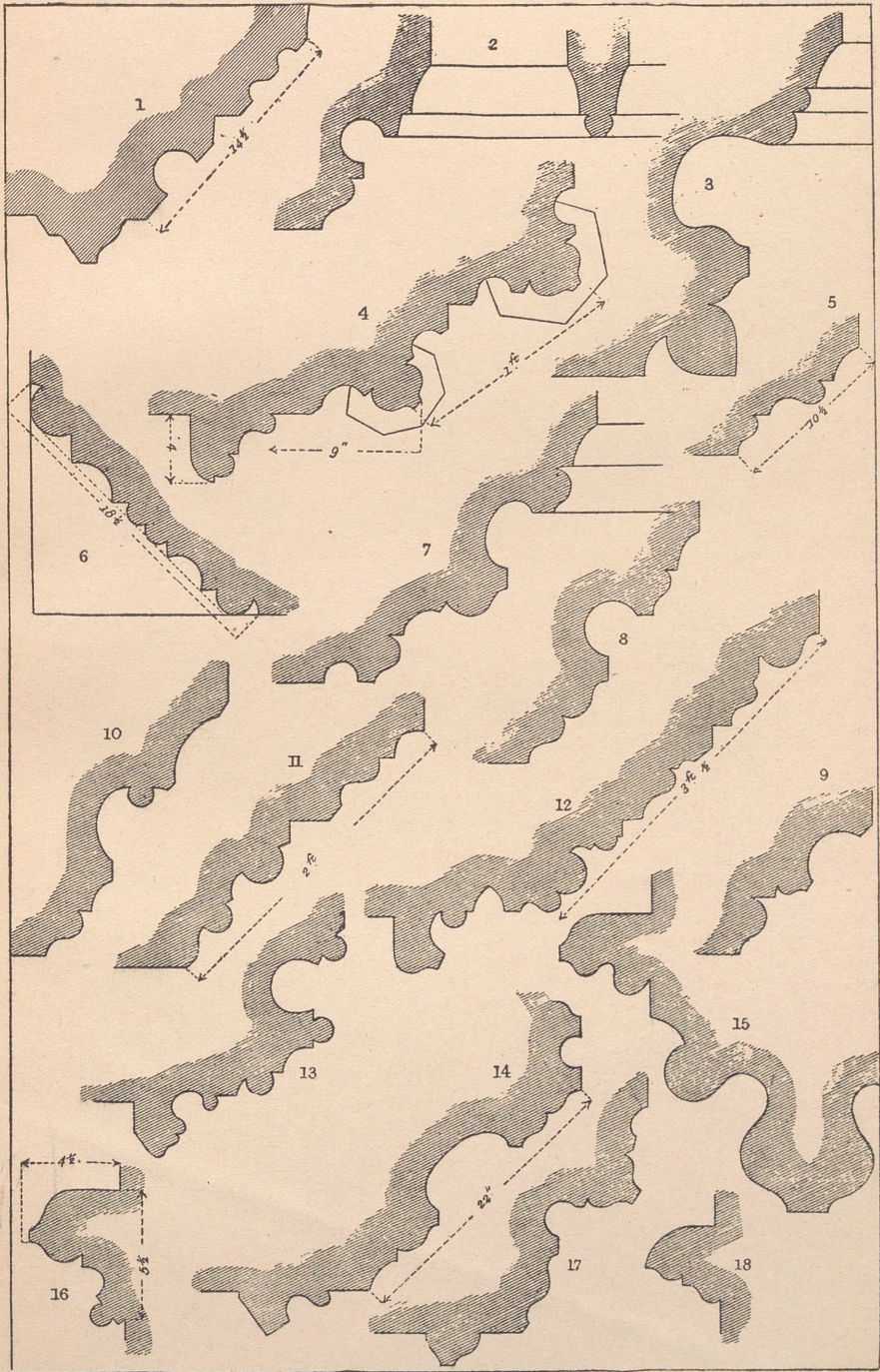
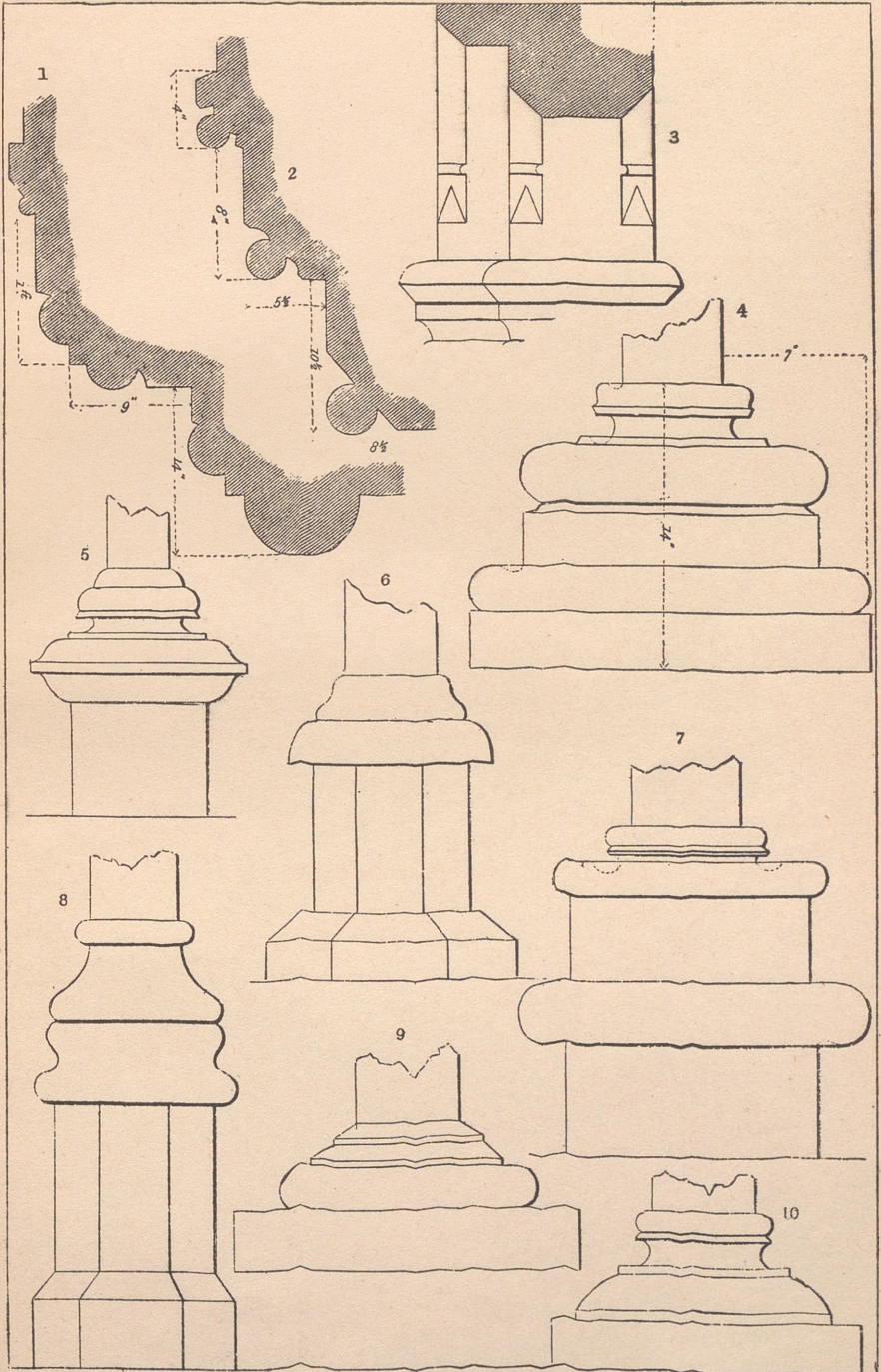




PLATE XXI.

1. Morcot, Rutland.
2. Seaton, do.
4. Ripon Cathedral—Revestry or Chapter Room.
5. York Cathedral—Library.
6. Do. do. Nave.
7. Do. do.
8. Ripon Cathedral.
9. Fountains Abbey.
10. Do. do. Chapter House.



W. L. Bull sc.



