

STUDIES FROM THE MUSEUMS.



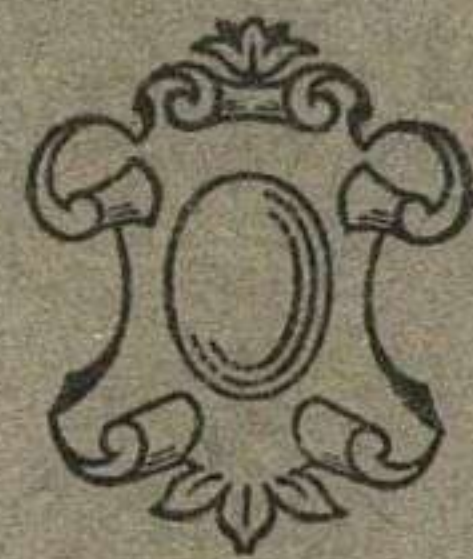
EMBROIDERY

FROM

The South Kensington Museum.

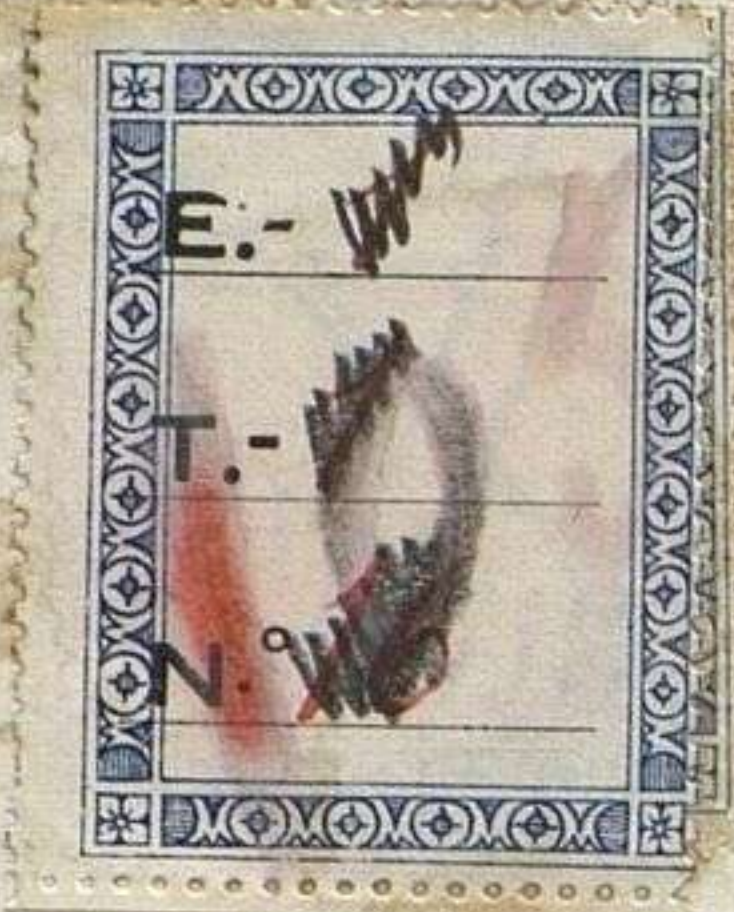
EDITED BY

ALAN S. COLE.



J. TIRANTI, 13, MAPLE STREET, LONDON, W.





105  
G. 133

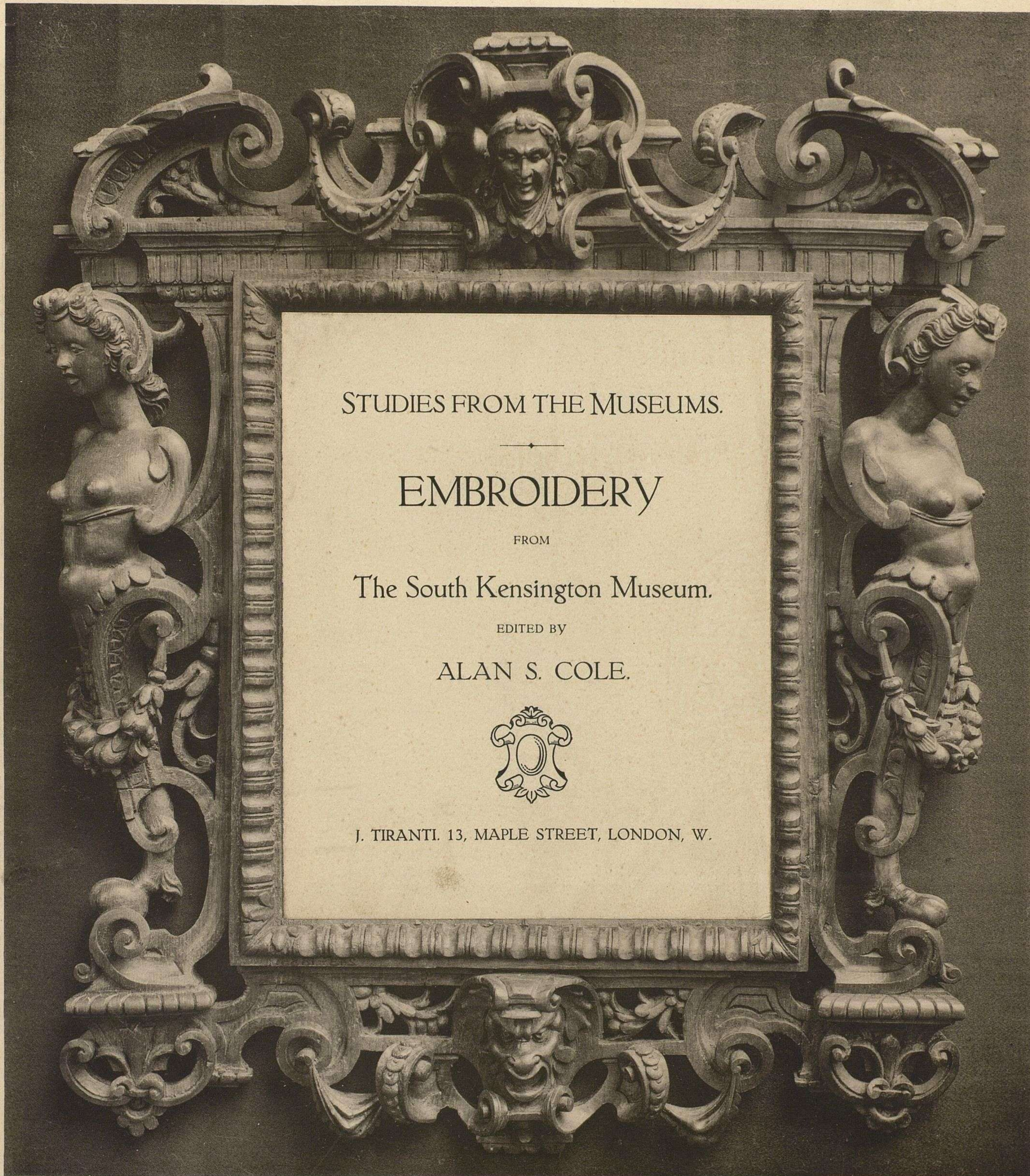
### EMBROIDERY.

PLATE.				COUNTRY.	REG. No.	S.K.M.
I	Lectern · Cloth	....	....	German	8358	1863
II	Altar Cover	....	....	"	4457	1858
III	Coverlet	....	....	German or Swiss	851	1884
IV	Bands for Table Linen	....	....	Italian	( 502 504 500 503 505 )	1877
V	Table Cloth	....	....	"	386	1888
VI	" "	....	....	"	384	1888
VII	Apron	....	....	Levantine	550	1884
VIII	Border for Petticoat	....	....	Cretan	2045	1876
IX	" "	....	....	"	2057	1876
X	" "	....	....	"	2052	1876
XI	" "	....	....	"	2043	1876
XII	Band	....	....	Italian	575	1888
XIII	Cover	....	....	German	4646	1859
XIV	Border and Vallance	....	....	Spanish	{ 851 4894	{ 1875 1858
XV	Part of an Apron	....	....	French or Italian	1150	1877





R - 013



STUDIES FROM THE MUSEUMS.

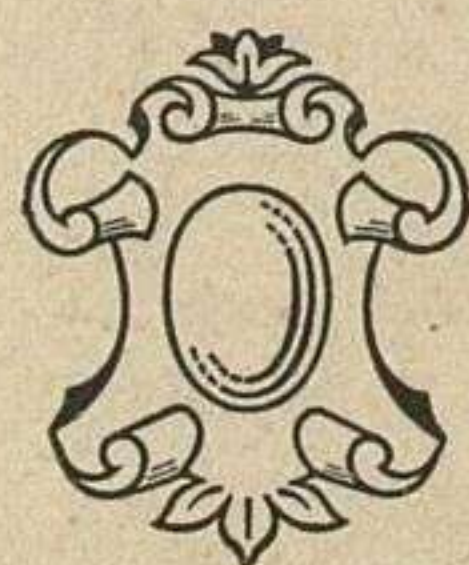
—  
EMBROIDERY

FROM

The South Kensington Museum.

EDITED BY

ALAN S. COLE.



J. TIRANTI. 13, MAPLE STREET, LONDON, W.



## GERMAN—14th Century.



LECTERN CLOTH of faded linen, embroidered chiefly in chain stitch with coarse thread, with a vertically arranged pattern divided into two parts (of which one only is here shown); the one to hang one way, the shorter to hang in the reverse way. At the lower end of the cloth above the fringe is a series of figures, bordered by an intertwining bramble set with blossoms. Above is a large quatrefoil, with a roundel encircled by the words—*Magnificat Anima Mea Dominum*—containing the Visitation; the figures stand amid lily-bearing stems; in each of the petals of the quatrefoil is an angel ringing bells or swinging a censer. Along the two sides of the cloth are circles, also inclosing figures of female saints.

Length, 10 ft. Width, 3 ft. South Kensington Museum.

Reg. No. 8,358.—'63.



## GERMAN—15th Century.



ALTAR COVER of white linen, embroidered with stem and short stitches with white thread, with a pattern consisting of a centre roundel with the "Agnus Dei" or "Holy Lamb;" and four same sized roundels, one at each corner, containing the symbolic animals of the four Evangelists; springing from the roundels in corresponding scrolls are thin stems with passion-flower blossoms, vine leaves, tendrils, and other plant devices. Amongst these scrolls appear dogs, harts, rampant unicorns, a bird of the stork kind preening its feathers, and stag looking at the hound behind.

Length, 6 ft. 3 in. Width, 5 ft. 8 in. South Kensington Museum.

Reg. No, 4,457.—'58.



## GERMAN or SWISS—16th Century.



COVERLET or CLOTH of light red linen, worked in white threads (the forms outlined with blue and red threads) in short and stem stitches. The design consists of a central wreath, within which is seated a figure "Tactus." At each of the four corners of the cloth are similarly seated female figures, with emblematic birds and animals, representing the senses "Visus," "Auditus," "Gustus," and the fourth "Olfactus." Springing at equal distances from the centre wreath, and scrolling over the spaces between the emblematic figures, are formal stems with flower and fruit devices. Dated 1580.

Length, 5 ft. 2 in. Width, 4 ft. 2 in. South Kensington Museum.  
Reg. No. 851.—'84.



Length, 15 in.  
Width, 3 in.  
South Kensington Museum.  
Reg. No. 502.—'77



Length, 18½ in.  
Width, 1½ in.  
South Kensington Museum.  
Reg. No. 504.—'77.



Length, 2 ft. 4 in.  
Width, 3 in.  
South Kensington Museum.  
Reg. No. 500.—'77



Length, 17 in.  
Width, 1½ in.  
South Kensington Museum.  
Reg. No. 503.—'77.



Length, 2 ft. 4 in.  
Width, 3½ in.  
South Kensington Museum.  
Reg. No. 505.—'77.



ITALIAN—16th Century.

BANDS of White Linen for table cloths, napkins, &c. The embroidery is done with red silk, in short and cross stitches, and gives the same effect on both sides of the linen. Trimmings to skirts, collars and cuffs were also made in this class of embroidery, many patterns for which were published in Italian and German pattern books of the 16th and 17th Centuries.



ITALIAN—Early 17th Century.



TABLE CLOTH, of fine white linen, embroidered along the border, and at the ends in satin stitches with gold thread. Insertions of needlepoint lace "punto in aria" are freely used. The edging consists of Vandykes of point lace, wrought in white and gold threads.

Length, 6 ft. 6 in. Width, 3 ft. South Kensington Museum.  
Reg. No. 376.—'88.



ITALIAN—17th Century.



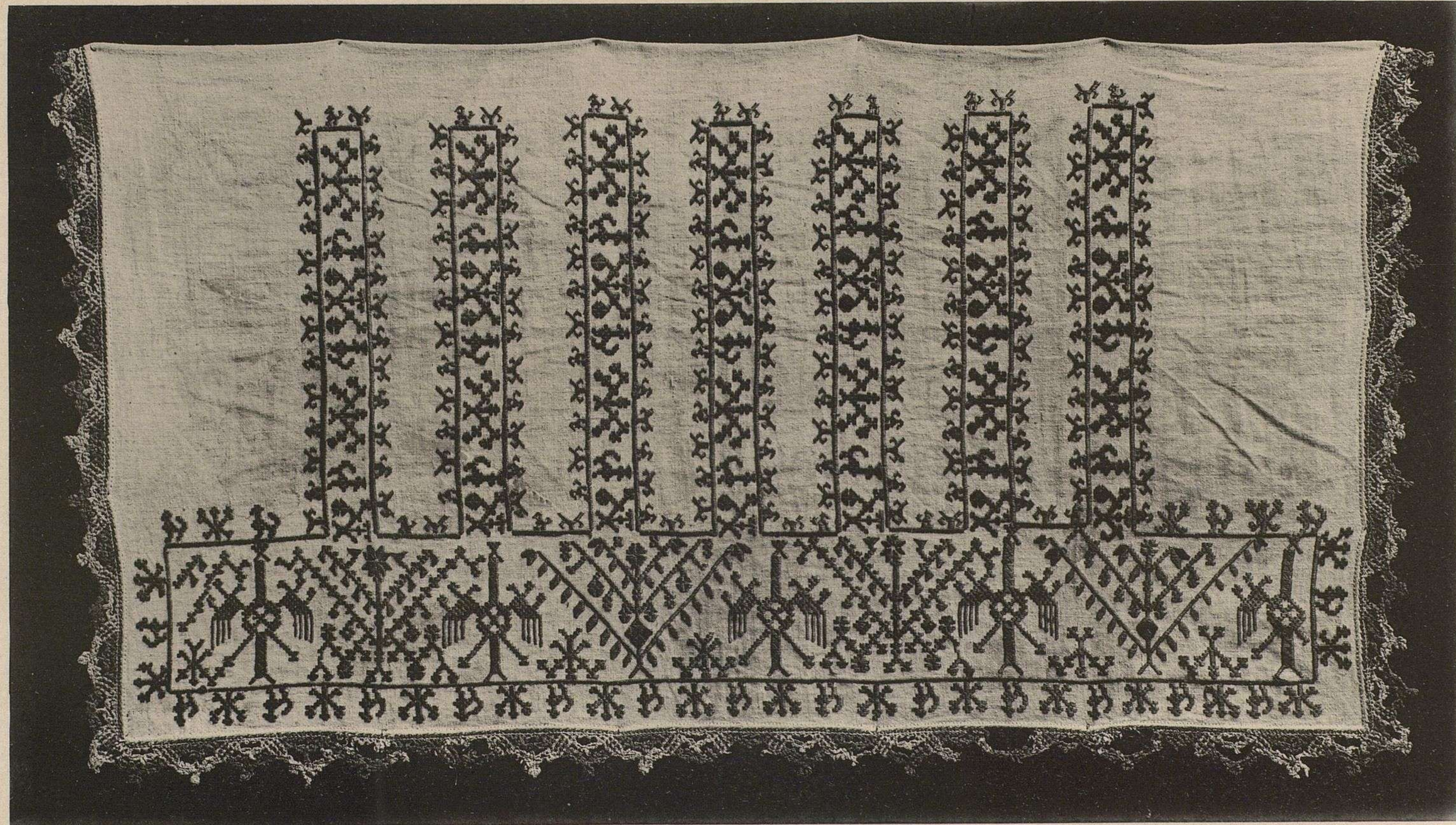
Corner of a TABLE CLOTH, of linen, embroidered with colored silks, in cross and satin stitches, and edged with a pillow-made lace "Merletti a Piombini," of thread and silk.

Length, 4 ft. 8 in. Width, 3 ft. South Kensington Museum.

Reg. No. 384-'88.



LEVANTINE—17th Century.



APRON<sup>p</sup> of linen, worked with red silk in satin, and tent stitched (both sides alike), in a pattern consisting of a horizontal band, containing alternations of eagles and formally arranged branch devices; with seven smaller vertical bands containing bird and debased plant forms.

Length, 2 ft. 2 in. Width, 1 ft. 7½ in. South Kensington Museum.

Reg. No. 550.—'84.



CRETAN—18th Century.



Part of a BORDER for a petticoat, of stout linen, embroidered with dark blue silk, chiefly in satin stitches; between these are closely drawn twisted thread cross stitches, and occasional knottings. The pattern consists of repetitions of orderly arrangements of flowering scrolls and animals, springing from each side of a double-headed eagle; below the eagle are two human figures, who with one hand respectively hold the lower twists of the adjacent scroll.

Length, 2 ft. 2 in. Width, 1 ft. South Kensington Museum.  
Reg. 2,045.—'76.



CRETAN—18th Century.



Part of a BORDER for a petticoat, of stout linen, embroidered with black, blue, green, yellow, and red silk, chiefly in long-cross and chain stitches. The pattern consists of a lower band of leafy scroll devices, above which are arranged alternately, vertical series of (1) two birds surmounted by a sunflower device; and (2) of bunches of three carnations, between which are palmettes, in two series, placed obliquely at regular intervals, and producing a sort of trellis-work effect.

Length, 2 ft. Width, 1 ft. 8 in. South Kensington Museum.

Reg. No. 2,057.—'76.



## CRETAN—18th Century.



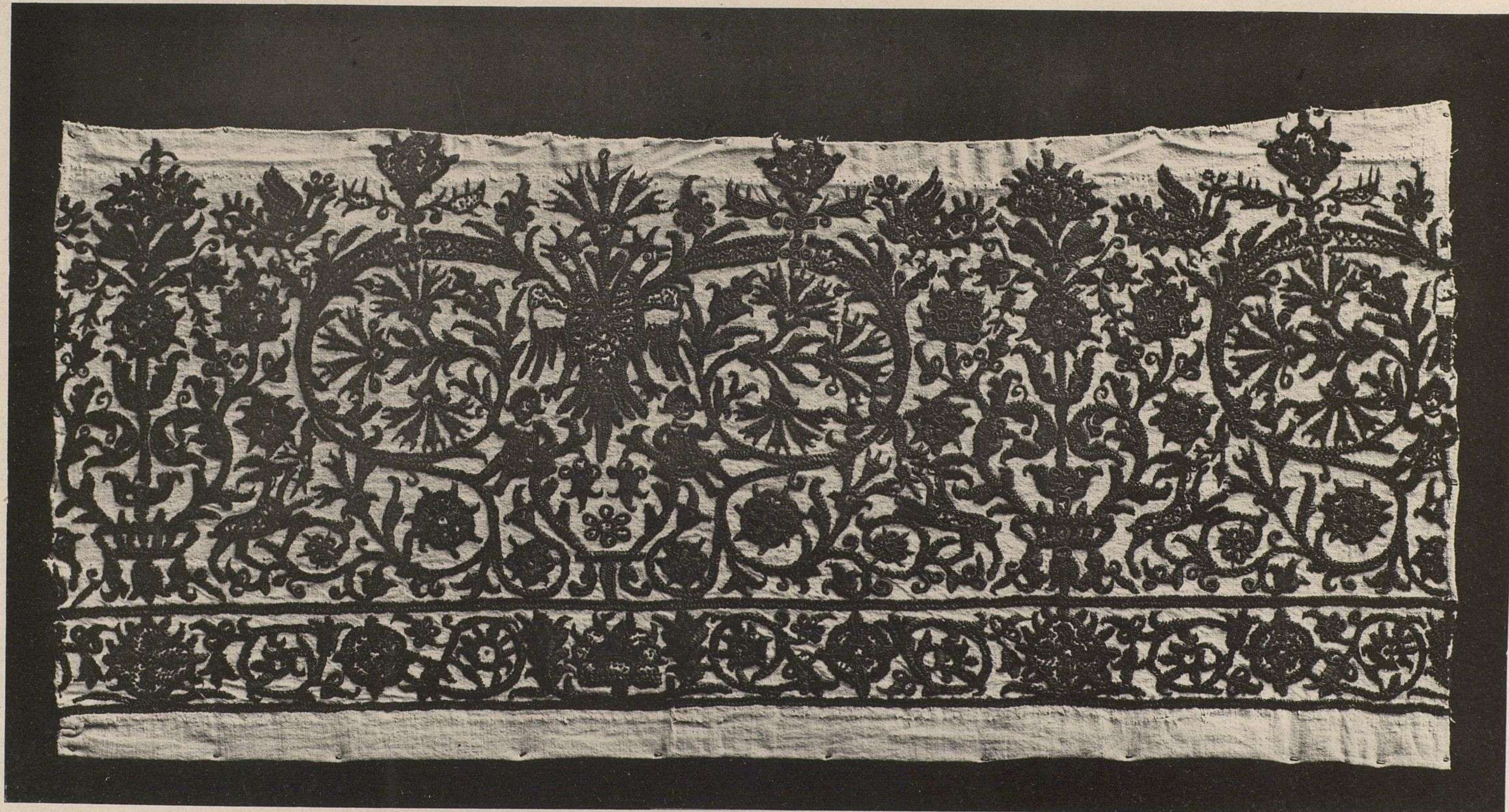
Part of a BORDER for a petticoat, of stout linen, embroidered with red, yellow and green silks, in chain, satin, and twisted thread cross stitches. The forms are outlined in chain and stem stitches. The pattern consists of a lower band with floriated scroll of three twists springing from each side of a central device, repeated; above which is a series of repeated vase or basket devices, out of which come bunches of conventional carnations; between these appear double-headed eagles, surmounted with carnation ornament.

Length, 2 ft. Width, 1 ft. 7 in. South Kensington Museum.

Reg. No. 2,052.—'76.



CRETAN—18th Century.

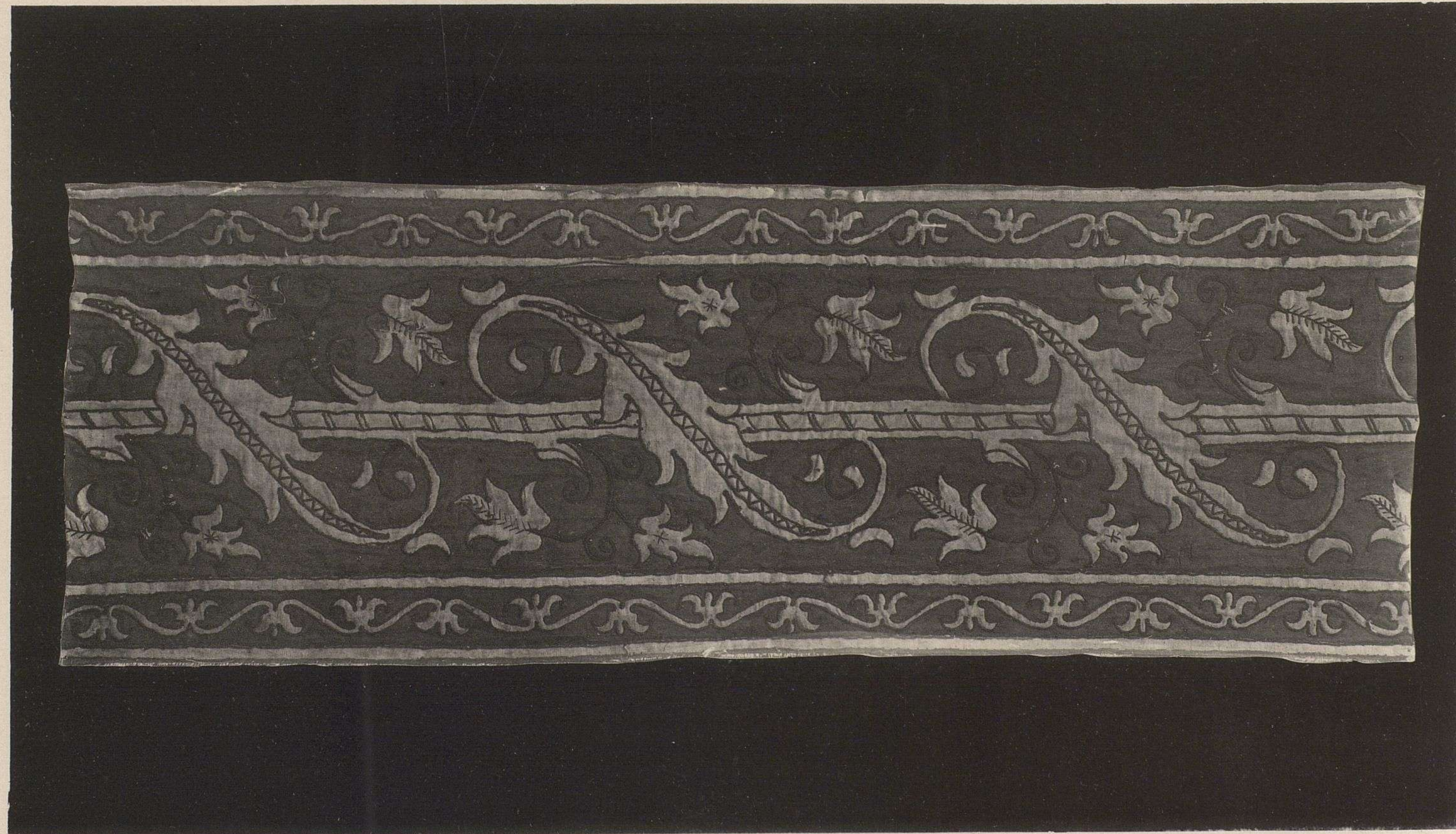


Part of a BORDER for a petticoat, of stout linen, embroidered in dark blue silk, chiefly with cross and satin stitches; the pattern consists of a lower band with repeated scrolls, ending in a sort of palmette and blossom, interchanged with birds; above is a well distributed ornament of scrolls springing alternately from two different shaped vases.

Length, 2 ft. 3 in. Width, 1 ft. 2½ in. South Kensington Museum.  
Reg. No. 2,043.—'76.



ITALIAN—17th Century.



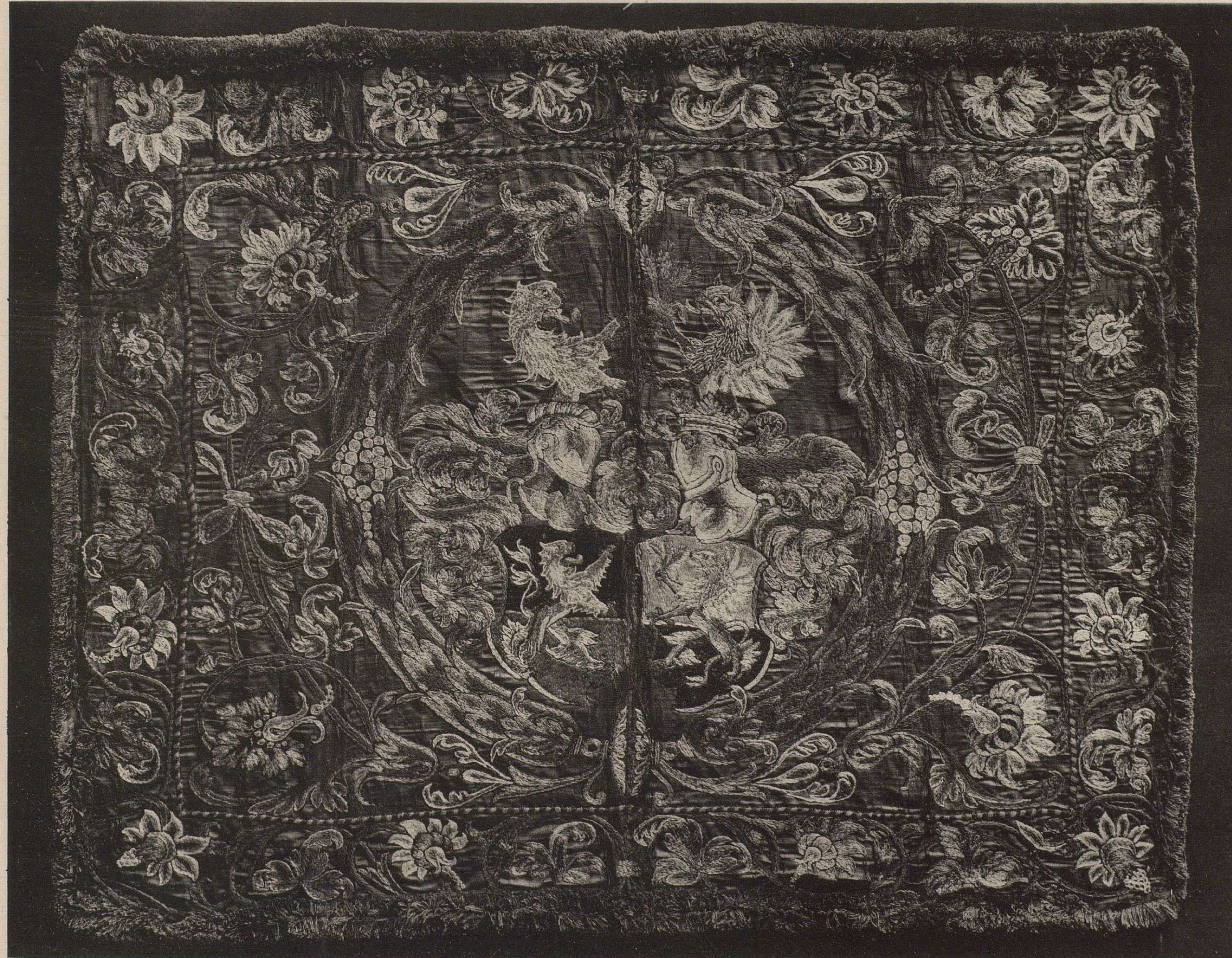
Part of a BAND of Appliqué work, wrought in white linen, edged with yellow silk cord upon a ground of faded purple silk.

Length, 2 ft. Width, 10 in. South Kensington Museum.

Reg. No. 575.—'88.



GERMAN—Late 16th or Early 17th Century.



COVER (for a cushion) of brown silk, embroidered with coloured silks in chain and short stitches. This character of design, in which the armorial bearings of the person for whom the embroidery was made were introduced, was in vogue with Nuremberg families of the late 16th and early 17th centuries.

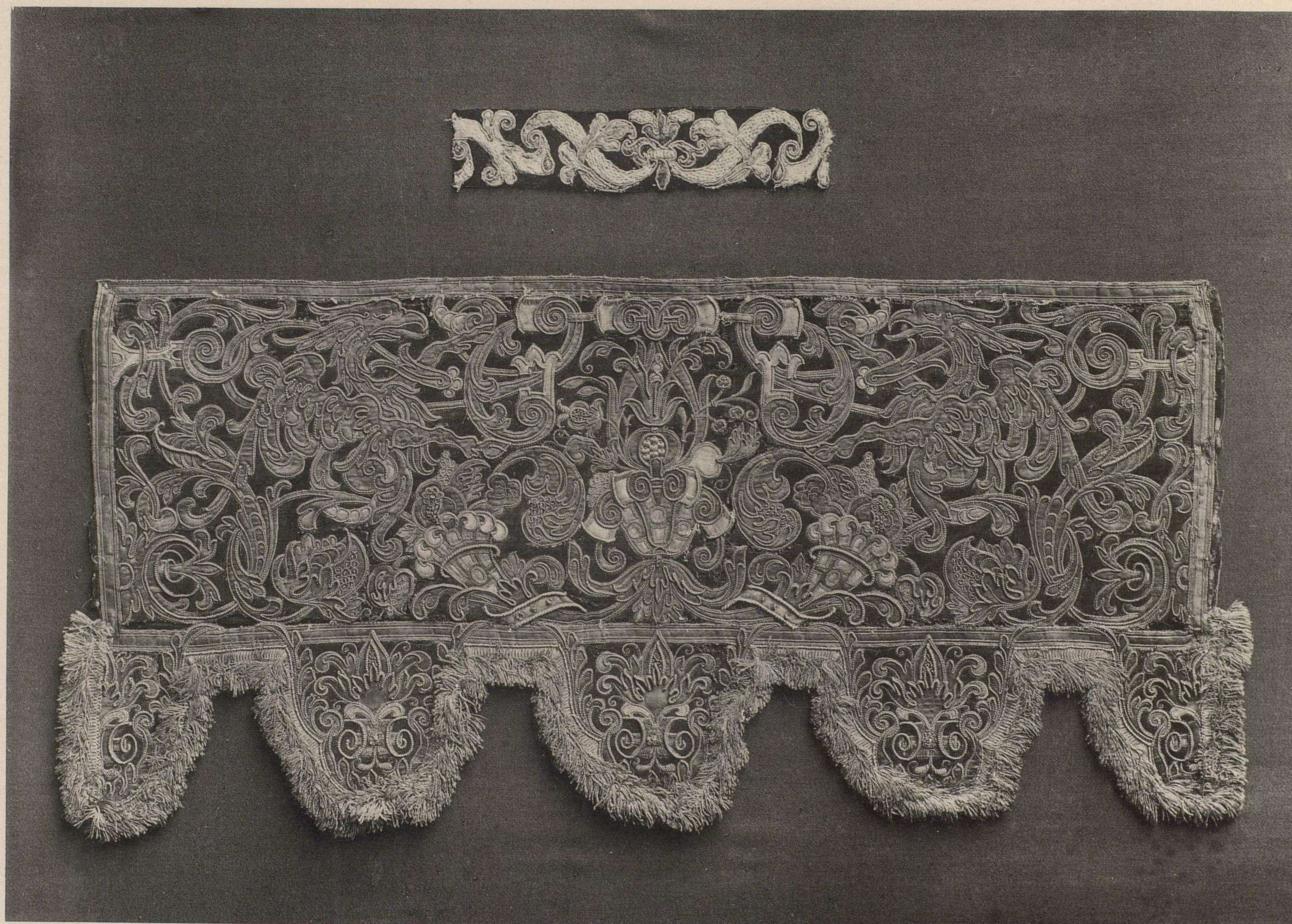
Covers, quilts, and table cloths were frequently so ornamented.

Length, 3 ft. in. Width, 2 ft. 5 in. South Kensington Museum.

Reg. No. 4,646.—'59.



SPANISH—16th Century.



Fragment of a BORDER, of black velvet, the ornament worked in coloured silks, edged with gold thread.

Length, 8½ in. Width, 1½ in. South Kensington Museum.

Reg. No. 851—'75.

FURNITURE TRIMMING or Scalloped Valance of black velvet, with a pattern of a flower-bearing scrolled vase, between two horns of plenty, with fruits and acanthus scrolls, amongst which, and vis-a-vis to one another, are two griffins with red tongues, wings displayed, and cloven-footed legs, cut out chiefly of yellow and blue satins applied (appliqué) and outlined with gold, silver, and silk gimp threads stitched down.

Length, 1 ft. 1 in. Width, 12 in. South Kensington Museum.

Reg. No. 4,894.—'58.



FRENCH or ITALIAN—Late 17th Century.



Part of an APRON, of white silk, worked in chain and satin stitch with light coloured silks, and in gold thread layings, with a pattern of repeated vertical arrangements of conventional and naturalistic forms.

Length, 2 ft. 1½ in. Width, 1 ft. 8 in. South Kensington Museum.

Reg. No. 1,150.—'77.



## EMBROIDERY.

PLATE.				COUNTRY.	REG. No.	S.K.M.
I	Lectern Cloth	....	....	German	8358	1863
II	Altar Cover	....	....	"	4457	1858
III	Coverlet	....	....	German or Swiss	851	1884
IV	Bands for Table Linen	....	....	Italian	( 502 504 500 503 505 )	1877
V	Table Cloth	....	....	"	386	1888
VI	" "	....	....	"	384	1888
VII	Apron	....	....	Levantine	550	1884
VIII	Border for Petticoat	....	....	Cretan	2045	1876
IX	" "	....	....	"	2057	1876
X	" "	....	....	"	2052	1876
XI	" "	....	....	"	2043	1876
XII	Band	....	....	Italian	575	1888
XIII	Cover	....	....	German	4646	1859
XIV	Border and Vallance	....	....	Spanish	{ 851 4894	1875 1858
XV	Part of an Apron	....	....	French or Italian	1150	1877













16th Century.



ads (the forms outlined with blue and red threads)  
 wreath, within which is seated a figure "Tactus."  
 male figures, with emblematic birds and animals,  
 fourth "Olfactus." Springing at equal distances  
 in the emblematic figures, are formal stems with  
 Dated 1580.

with Kensington Museum.  
 84.