

Las mujeres de la cueva

Director

Schotis.

Letra Ant: Pado (hija) y F. Zuygumi

En 1^{ro} Guerrero

Lucinda y Teobaldo (Bailan el número.) Doce "Botolones" (que tocan los cascabeles)

Epo: de Schotis

f Totti

coll

mf

Lucinda (Dándole caracter de canción)

Ep Schotis de a

mf

P

qui se bai-laa-si un pequi-toa lo "pe-ra"

Teob: (Dándole carácter muy cholo)

¡Oy! que me harma-tao rics que el cho-tis lo ha-beis fal-si-fi-

Lucinda

cao ero han por que apre-tar pa-ra bai-

Teob:

lar ni mo ver la ca. de-ra — tu di-ja-mea

Detailed description: This system contains the first three measures of the Teob. part. The top staff has a treble clef and a key signature of one sharp (F#). It features a melodic line with triplets and slurs. The bottom staff has a bass clef and contains chordal accompaniment with some triplets.

Lucinda

ni que a. Nam Madrid es-to se Bai-la a-si. El Schotis

Detailed description: This system contains the first three measures of the Lucinda part. The top staff has a treble clef and a key signature of one sharp (F#). It features a melodic line with slurs and accents. The bottom staff has a bass clef and contains chordal accompaniment with slurs and accents.

Se-ne Se-ne. ciano no se Bai-la sin co-uer la

Detailed description: This system contains the next three measures of the Teob. part. The top staff has a treble clef and a key signature of one sharp (F#). It features a melodic line with slurs and accents. The bottom staff has a bass clef and contains chordal accompaniment with slurs and accents.

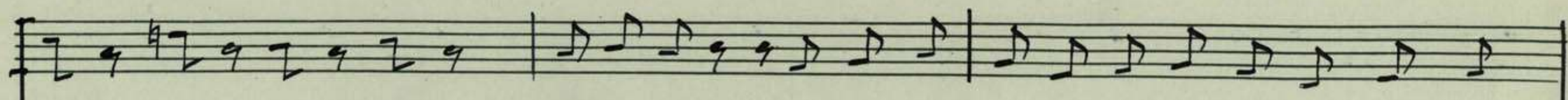
ma. no no con dis-tin-ción y con fi. m-ra ra jun to a un ca.

Teob:

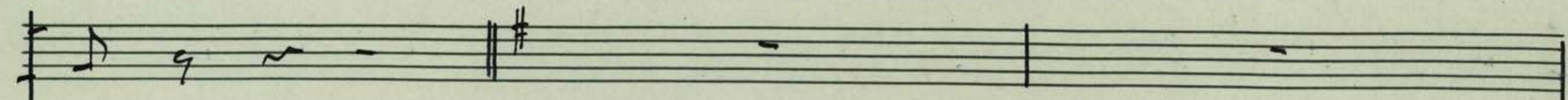
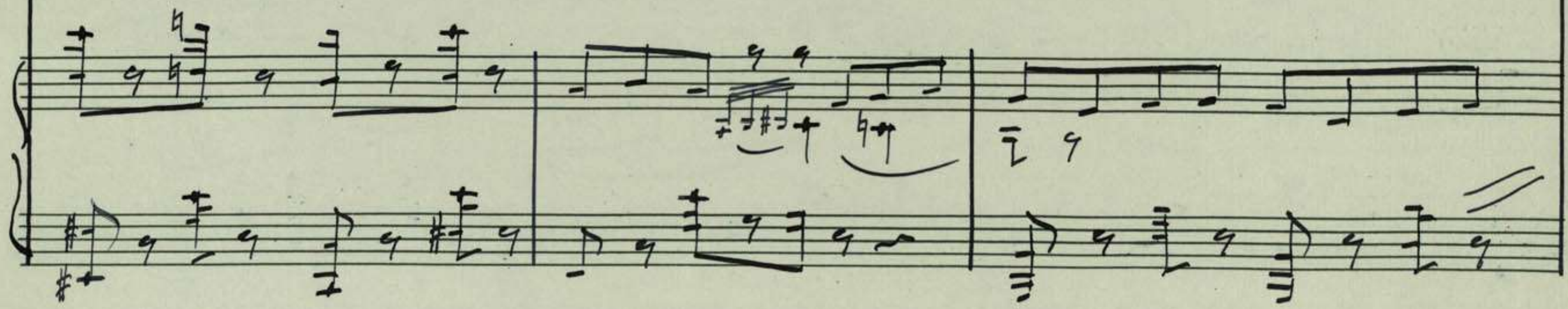
mal mientras te arrenllam tu sa - dor El Schotis Ma. dri Ma. dri.

le - ño ño se - ra de to. dos siempre el sueño ño por que al ha -

BIBLIOTECA DE ESPAÑA

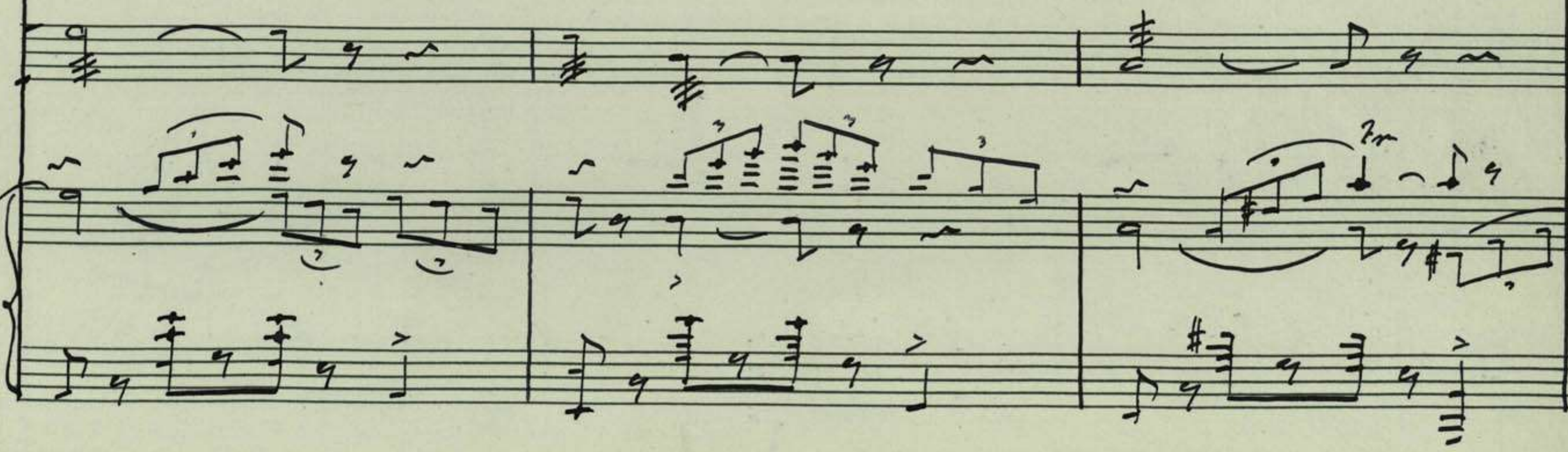
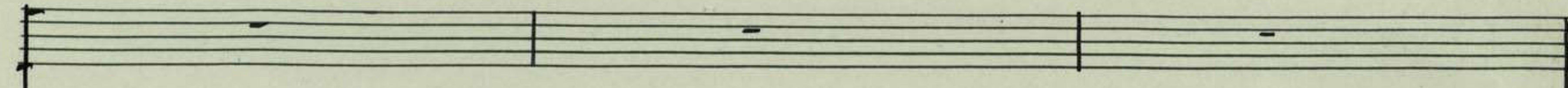
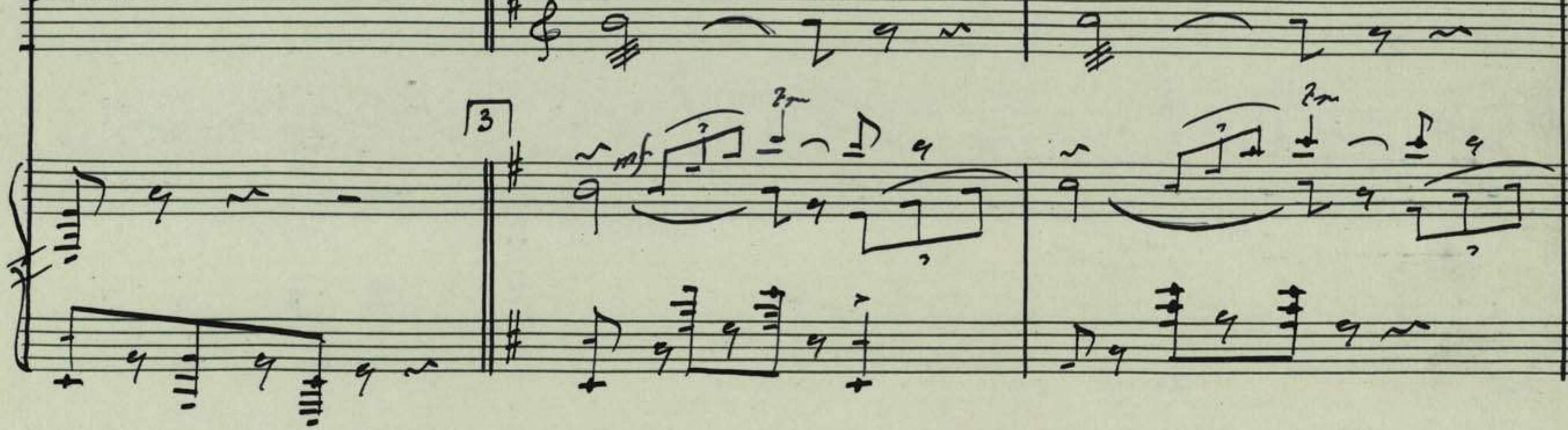


cer la sol. ca. dura ra te pones como el chico de los qui-la-



voz

cascabeles



Handwritten musical score for the first system, consisting of three staves. The top staff is a vocal line with a treble clef and a key signature of one sharp (F#). The middle and bottom staves are piano accompaniment. The piano part features a complex texture with many beamed sixteenth notes and chords. The first measure of the piano accompaniment includes the annotation *2^{ma}* above the staff.

Handwritten musical score for the second system, consisting of three staves. The top staff is a vocal line with a treble clef and a key signature of one sharp (F#). The middle and bottom staves are piano accompaniment. The piano part continues with complex textures, including beamed sixteenth notes and chords. The first measure of the piano accompaniment includes the annotation *loco* above the staff.

Handwritten musical score for the third system, consisting of three staves. The top staff is a vocal line with a treble clef and a key signature of one sharp (F#). The middle and bottom staves are piano accompaniment. The piano part continues with complex textures, including beamed sixteenth notes and chords. The first measure of the piano accompaniment includes the annotation *2^{na}* above the staff.

Cascabeles

Musical staff with notes and rests, including a treble clef and a key signature of one sharp (F#).

Lucinda

Musical staff with notes and rests, including a treble clef and a key signature of one sharp (F#).

El Schotis ve-ne ve-ne.

Piano accompaniment for the first system, including a grand staff with treble and bass clefs, a key signature of one sharp (F#), and a measure rest marked with the number 4.

(como antes)

Musical staff with notes and rests, including a treble clef and a key signature of one sharp (F#).

Musical staff with notes and rests, including a treble clef and a key signature of one sharp (F#).

ciano no se baila sin co-rrez la mano no con distin-

Piano accompaniment for the second system, including a grand staff with treble and bass clefs, a key signature of one sharp (F#).

Handwritten musical score for the first system. It consists of a vocal line on a single staff and a piano accompaniment on two staves. The vocal line begins with a treble clef and a key signature of one sharp (F#). The lyrics are: *ción y con fi- mura ra junto am ca . na l mientra ste ar en llan to sa .*

Handwritten musical score for the second system. It consists of a vocal line on a single staff and a piano accompaniment on two staves. The vocal line begins with a treble clef and a key signature of one sharp (F#). The lyrics are: *doz .*

SOLEDAD GENERAL DE AUTORES DE ESPAÑA

Handwritten musical notation on a single staff, featuring a treble clef, a key signature of one sharp (F#), and a series of eighth and sixteenth notes with slurs and ties.

Two empty musical staves.

Handwritten musical notation for a grand staff (treble and bass clefs), including chords, slurs, and various note values.

Handwritten musical notation on a single staff, featuring a treble clef and a series of eighth notes with slurs.

Two empty musical staves.

Handwritten musical notation for a grand staff, including chords, slurs, and various note values.

Two empty musical staves.

Handwritten musical notation for a grand staff, including chords, slurs, and various note values.

SOCIEDAD GENERAL DE AUTORES DE MÚSICA

