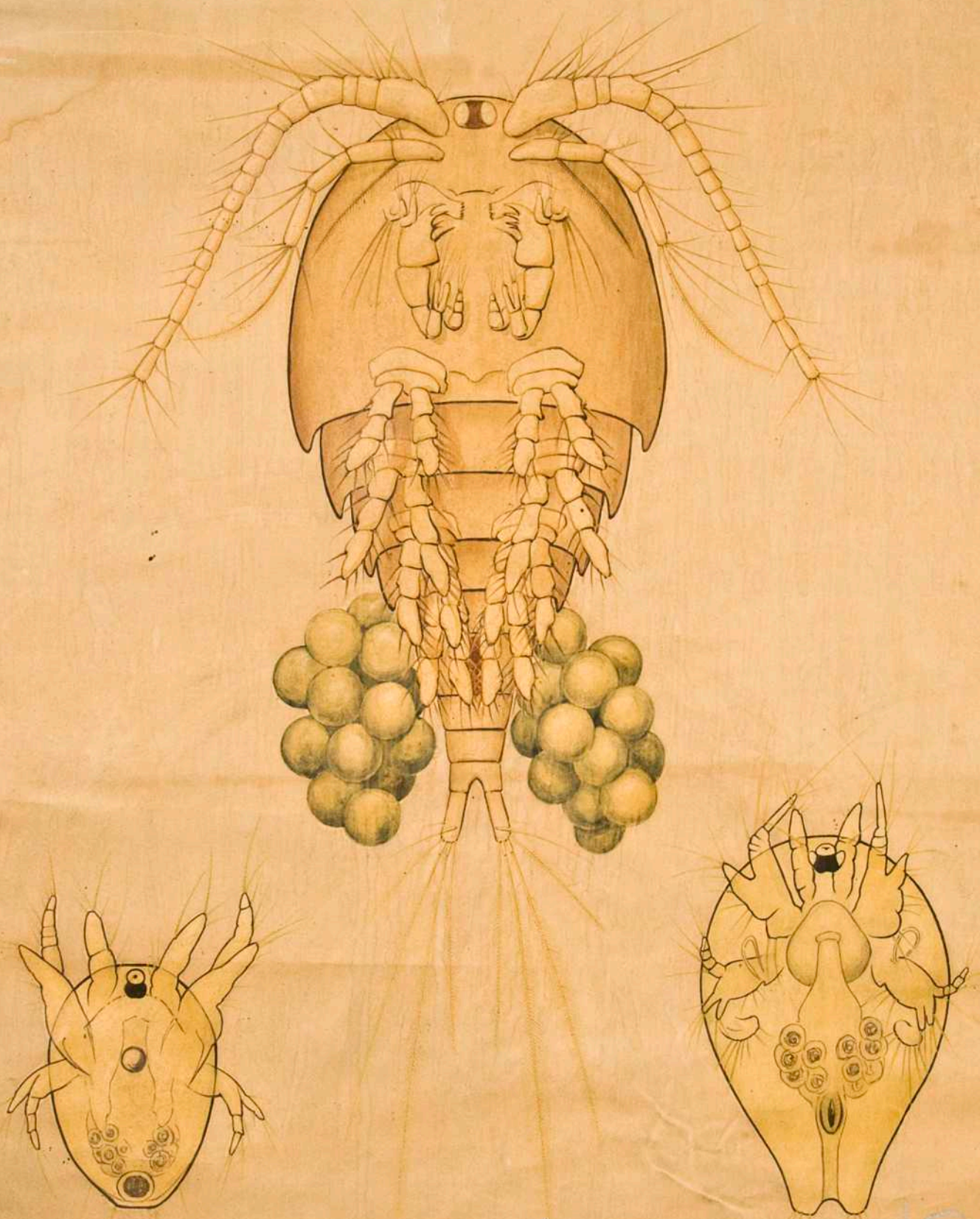
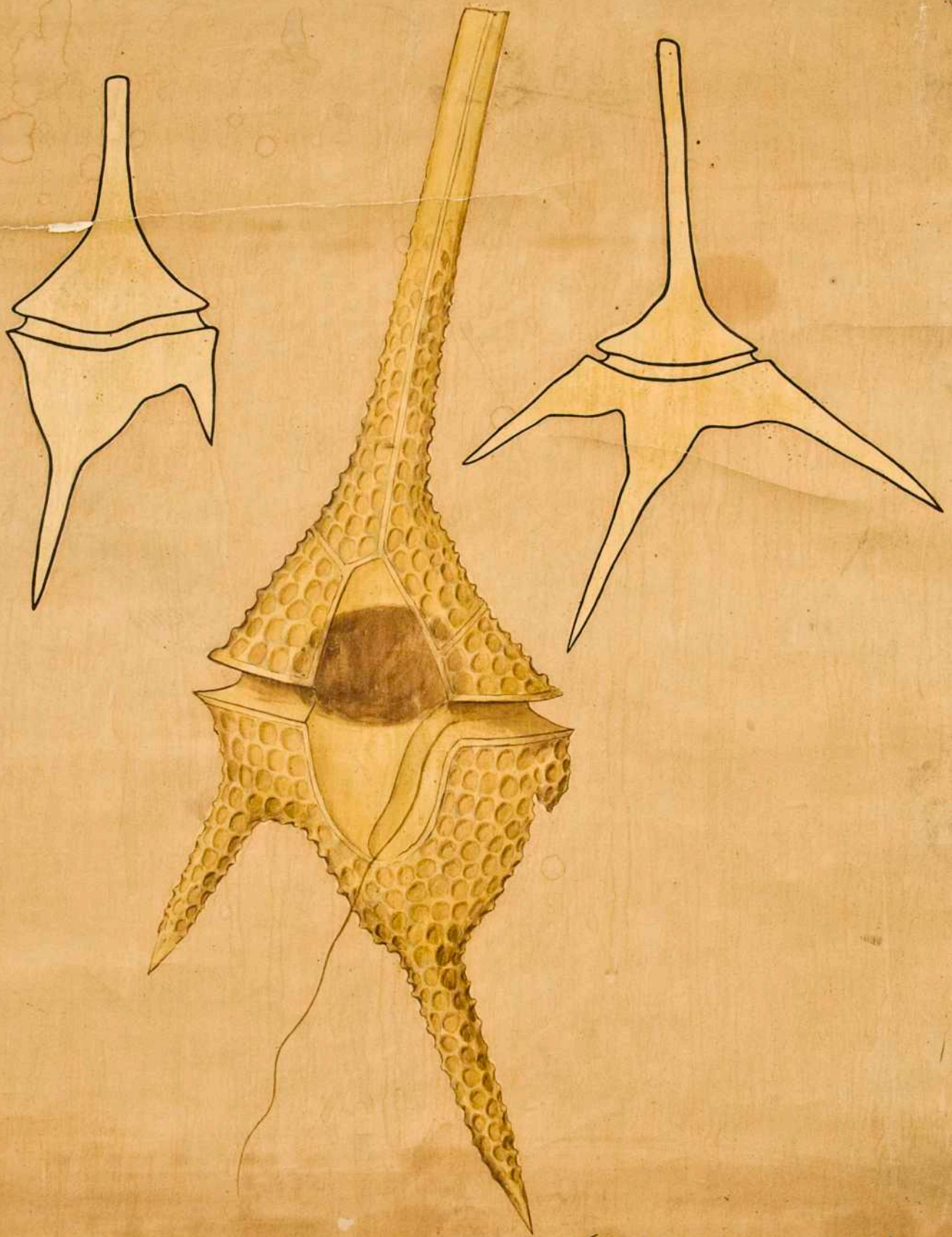


# COPÉPODOS



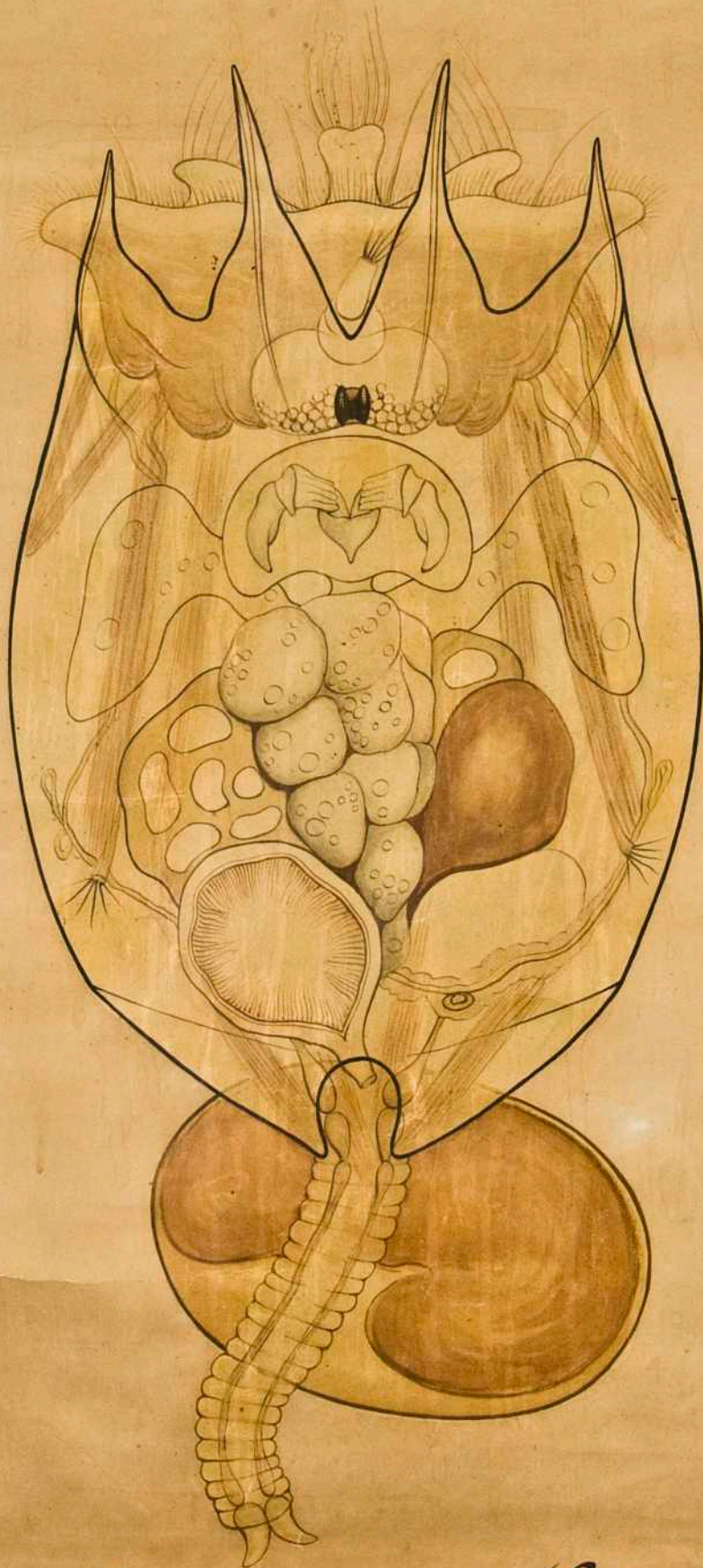
*Cyclops albidus* (Jurine) ♀  
*Albufera de Valencia*

# DINOFLAGELADOS



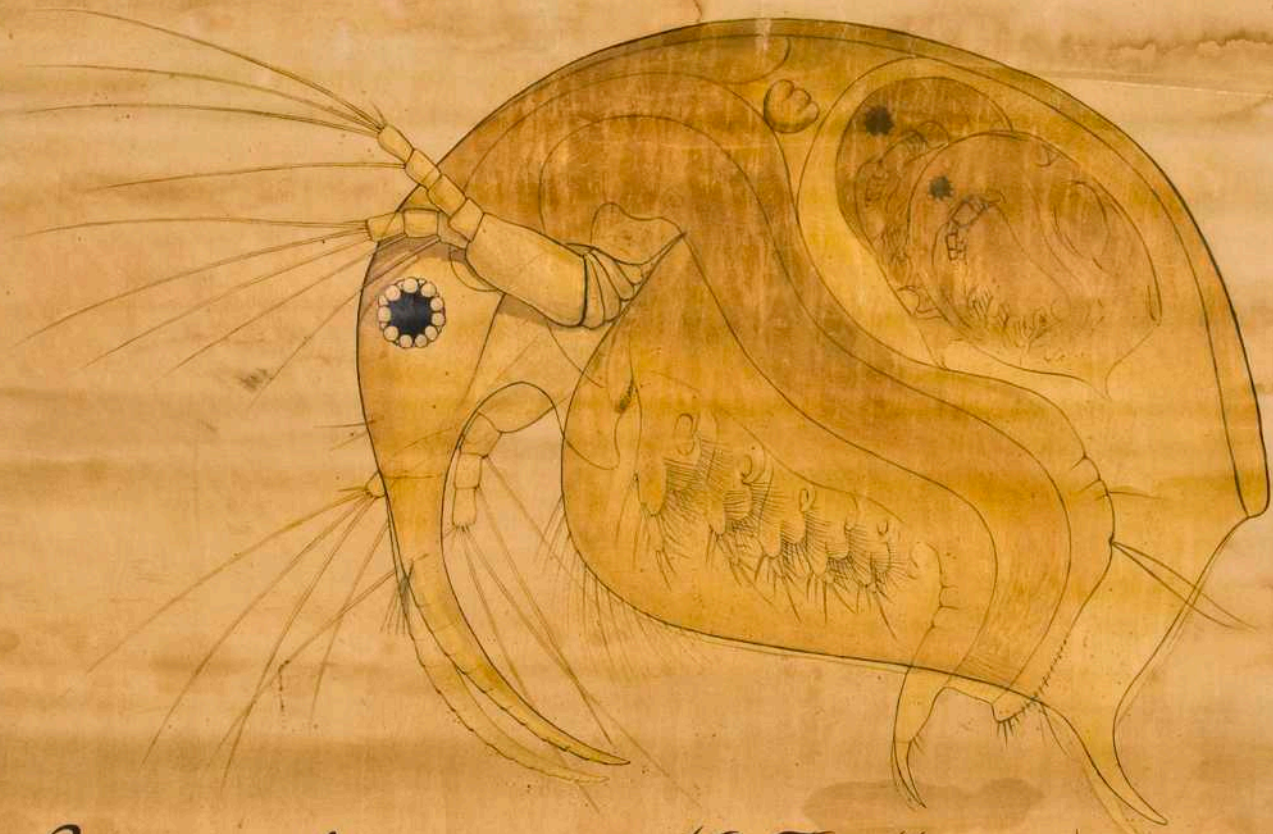
*Ceratium hirundinella* (O. F. Müller)  
*Albufera de Valencia*

# ROTÍFEROS



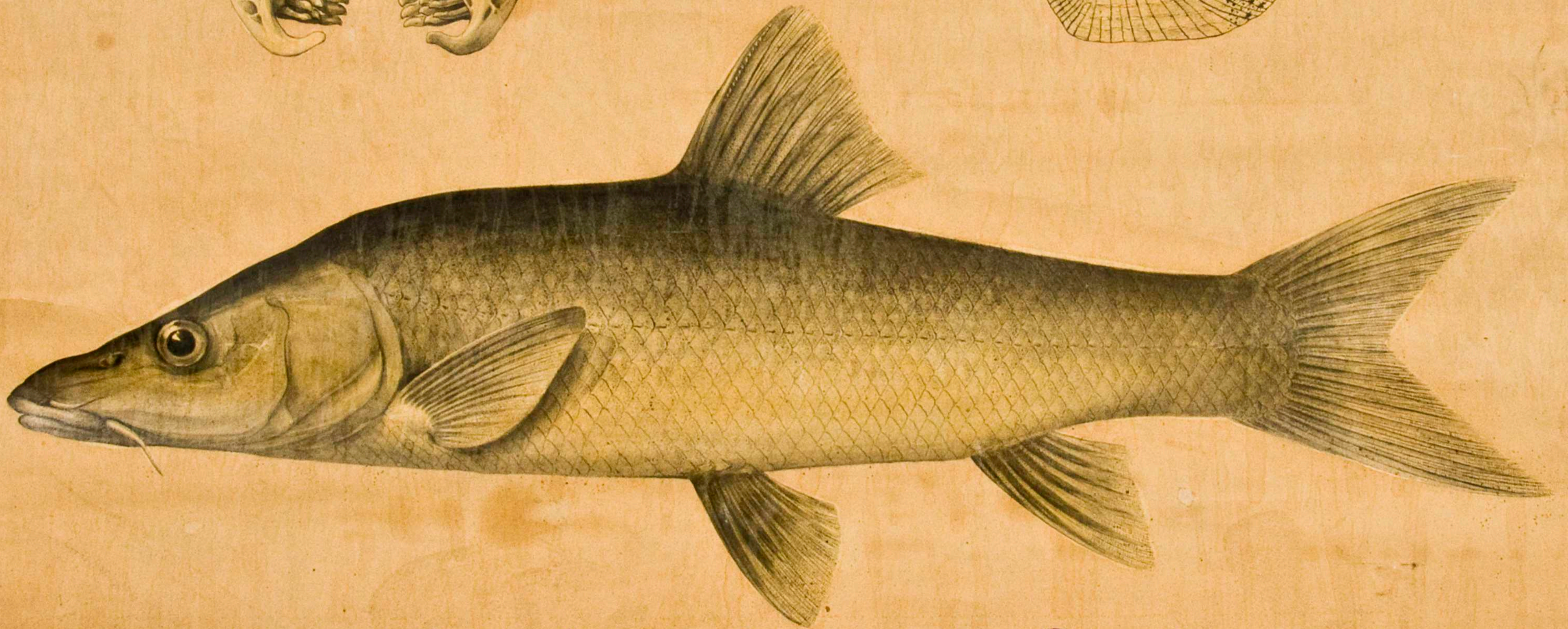
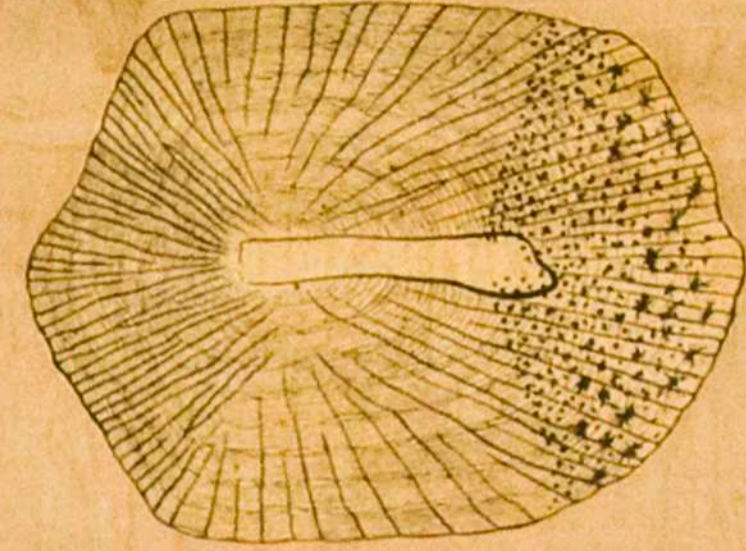
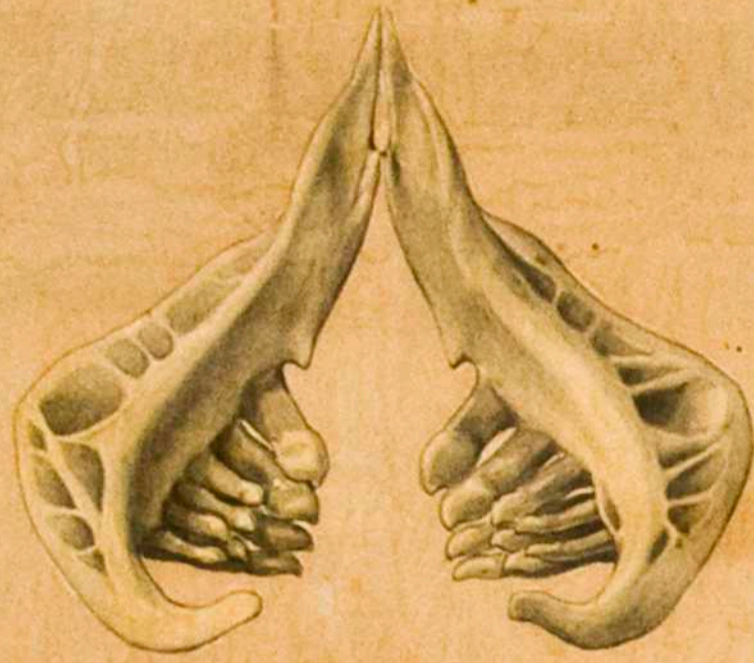
*Brachionus pala* (Ehrbg) ♀  
Estanque del Retiro (Madrid)

# CLADOCEROS



*Bosmina longirostris* (O. F. Müller) ♀ partenogenética  
Estanque del Retiro (Madrid)

CIPRINIDOS



*Barbus Comiza. Steind*  
*Daimiel (Guadiana)*

# HIDRÁCNIDOS



*Eylais hamata* (Koenike)

*Naualayegua. Cantalejo. (Segovia)*