

Corydalis.



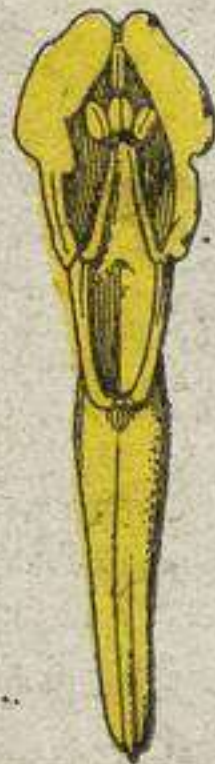
R



G



D



P

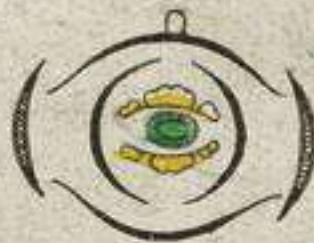
Fumariacées.

Fumeterre.

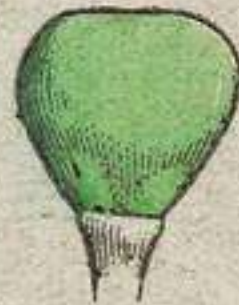


A

Rameau fleuri.



D



Fr



G

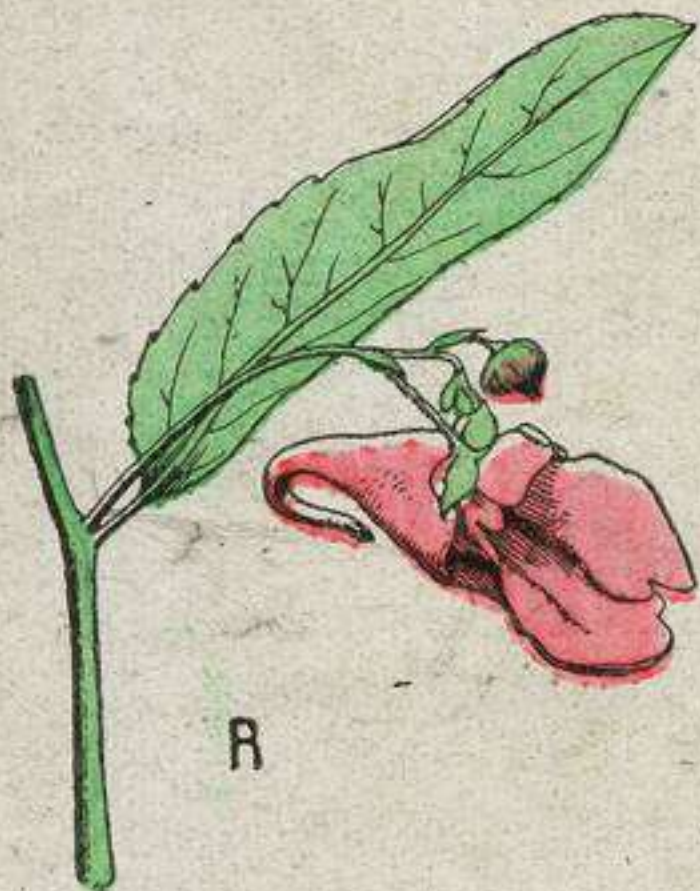


Gc

Fumariacées.

Impatiente.

E. MAZO. PARIS



R



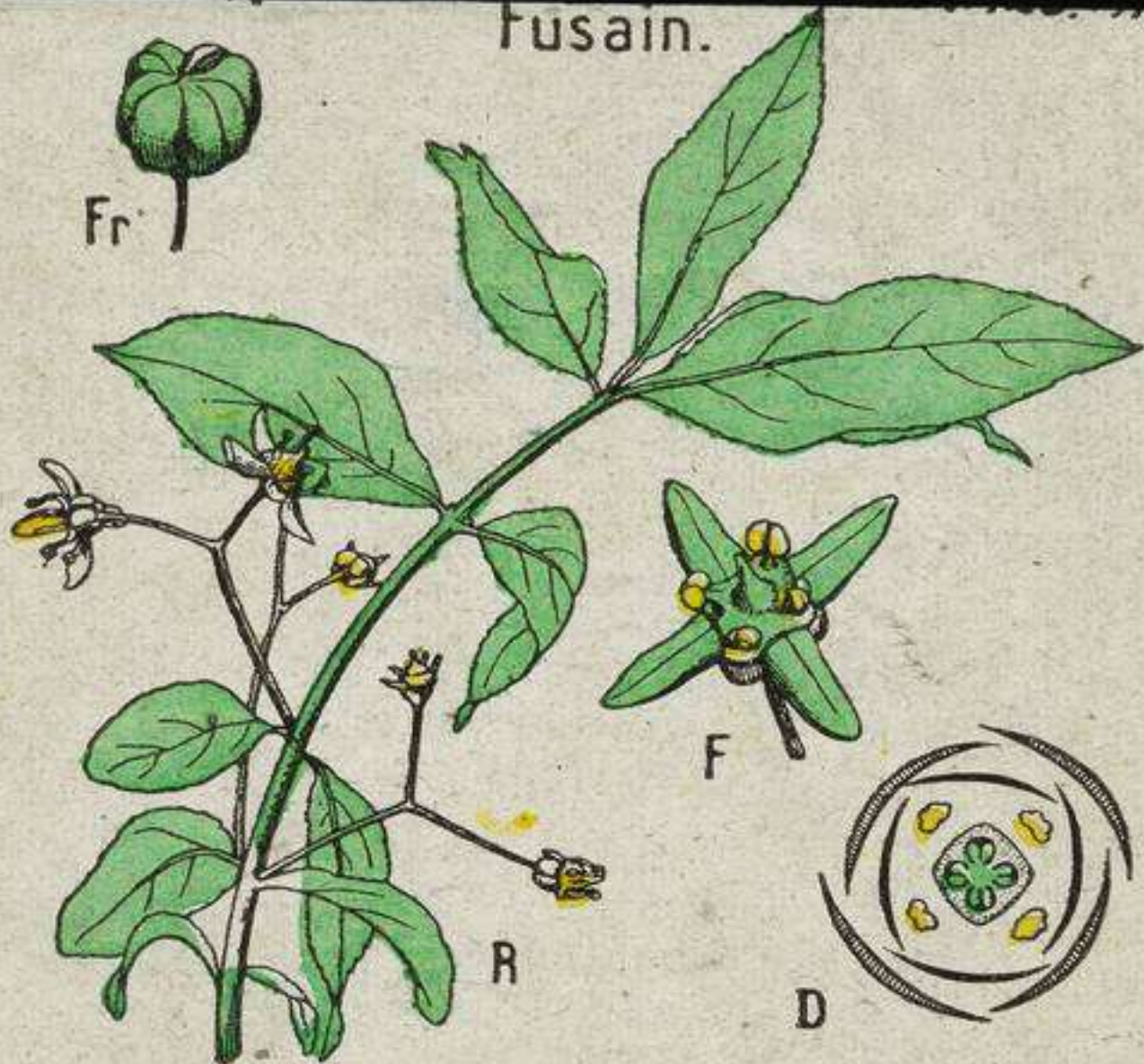
D



Fr

Balsáminées.

Fusain.



Célastrinées.

6

Bourdaine.



Rhamnées.

8

Myrte.

E. MAZO. PARIS



R



C



D

Myrtacées.

9

Melon.



Cucurbitacées.

Melon.

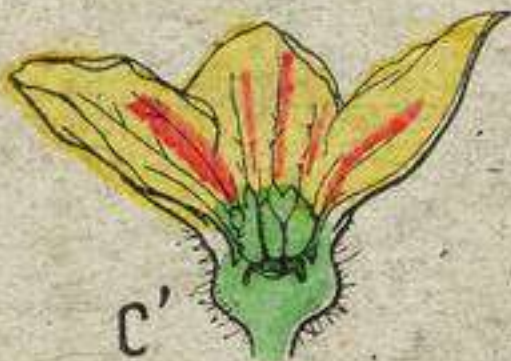
E. MAZO. PARIS



C



D



C'



D'

Cucurbitacées.