

Trompeta - 1^a

185

"La Dolores"

Jota

Breton

LA DOLORES

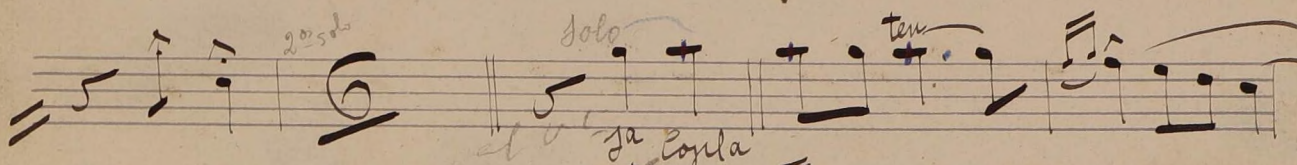
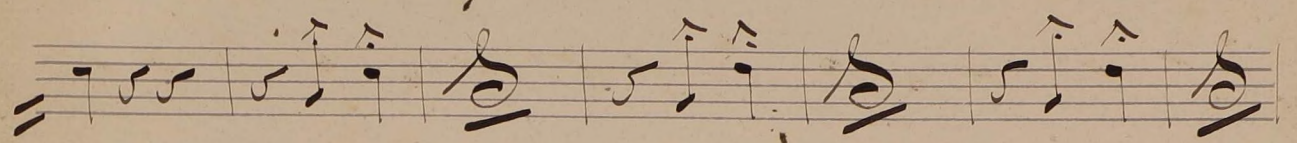
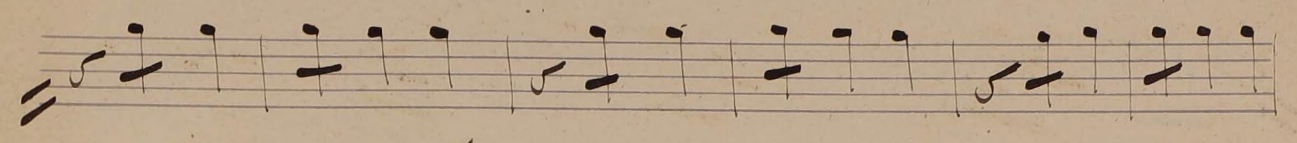
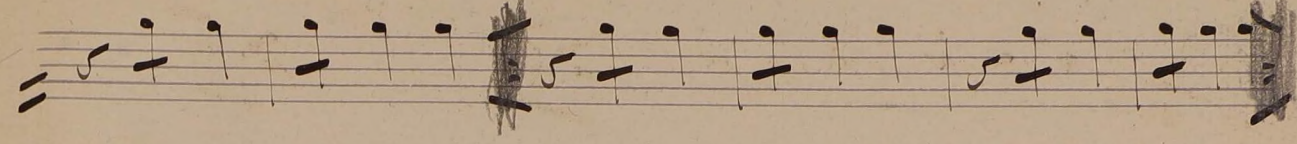
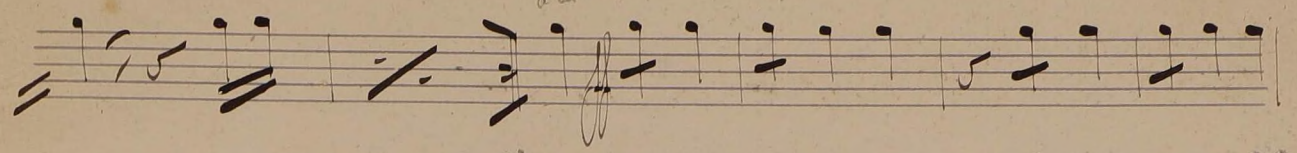
trumpeta 1^a
eula

Opus de Sota // - in La -

Handwritten musical score for trumpet 1^a. The score consists of ten staves of music. The first staff begins with a treble clef, a key signature of one flat (B-flat), and a time signature of 2/4. The music is marked with *a 2* and includes dynamic markings such as *ff* and *mf*. The score is divided into sections labeled *1^a variation*, *2^a variation*, *3^a variation*, *4^a variation*, and *5^a variation*. The notation includes various rhythmic values, including eighth and sixteenth notes, and rests. The final staff concludes with a double bar line and a *crue* marking.

2 -

al

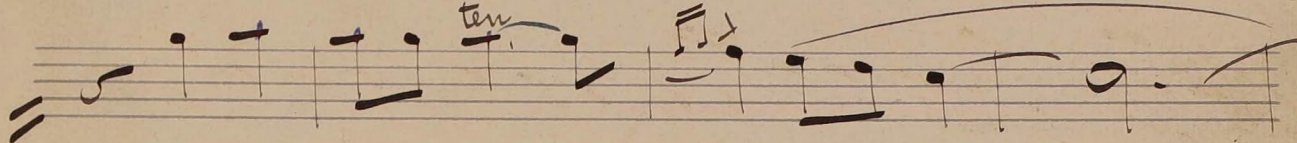
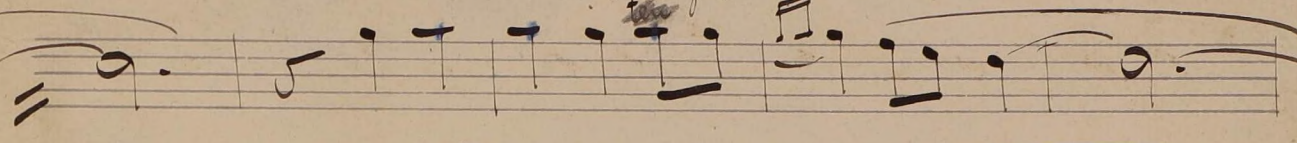


2^{da} solo

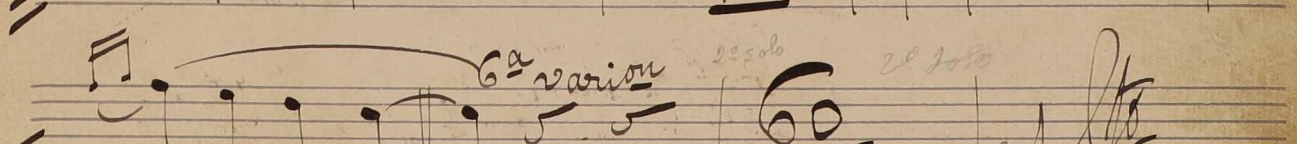
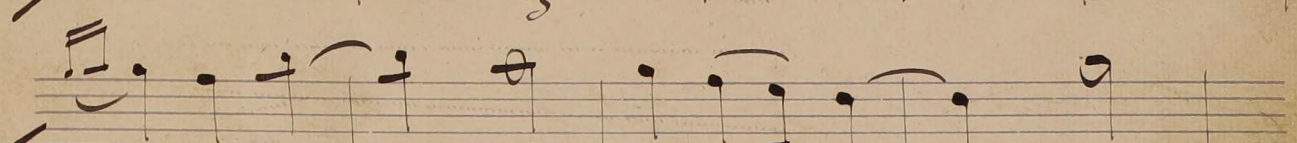
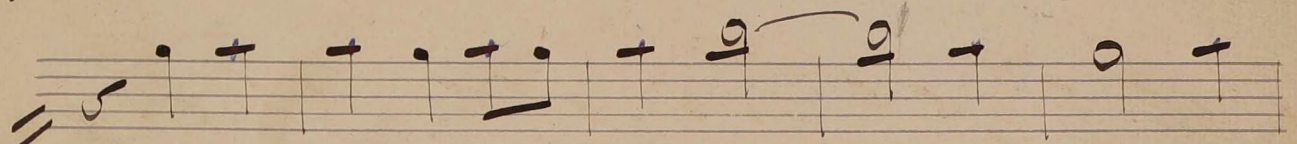
solo

ten

1^{da} copia
ten



ten

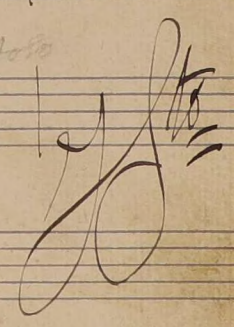


6^a varion

2^{da} solo

2^{da} solo

60



60+
4 solo

- 3 -

2^a Copla

x

2^a Copla

dolce

Handwritten musical score on ten staves. The notation includes various note values, rests, and dynamic markings. The score concludes with a large, decorative flourish on the final staff.

- Staff 1: Melodic line with a sharp sign and a slur. A handwritten 'x' is above the final note.
- Staff 2: Continuation of the melodic line with a slur and a handwritten 'x' above the final note.
- Staff 3: Continuation of the melodic line with a slur and a handwritten '12 sol' above the final note.
- Staff 4: Continuation of the melodic line with a slur and a handwritten '2 over 2 = min' above the first measure.
- Staff 5: Continuation of the melodic line with a slur and a handwritten '2 in 8' above the first measure.
- Staff 6: Continuation of the melodic line with a slur and a handwritten 'x' above the first measure.
- Staff 7: Continuation of the melodic line with a slur and a handwritten 'x' above the first measure. The staff contains notes with numbers 1 through 5 written above them.
- Staff 8: Continuation of the melodic line with a slur and a handwritten 'x' above the first measure. The staff contains notes with numbers 6 through 12 written above them.
- Staff 9: Continuation of the melodic line with a slur and a handwritten 'x' above the first measure.
- Staff 10: Continuation of the melodic line with a slur and a handwritten 'x' above the first measure. The staff concludes with a large, decorative flourish.