



Johannes
de Regiomonte
Calendarium



Nº 668

R-717

In laudem operis Calendarij a Jobanne demon-
te regio Germanorum decoris nostre etatis Astro-
nomoz principis editi Jacobi Sentini Ricinensis
Carmina.



Esperides hortum vatun
tenuisse puellas.

Omnis z hesperia gra-
iaq; turba canit.

In quo fulua simul ramis
fulgentibus arbor

Prebebat dominis
aurea poma suis.

Hortulus ille mihi liber
est hic (crede) latinis

Nam nō est toto hoc
ditior orbe liber

Luius si flava cupies ex arboze lector

Una poma leges aurea mille die.

Aureus hic numerus quod tanto nomine dignum

Effecit cesar iulius auctor opus.

Tempora Romanis gentes quibus era ferebant

Que proprium nomen inditionis habent.

Intervalla cyclis sunt hic z Apollinis alti

Monstratq; z domini littera certa diem.

Hinc pbe teos poteris cognoscere motus

Motus z pbebes hinc tibi nosse licet.

Adde etiam pbebi pariter luneq; labores

Quos qui scire volent hinc bene scire queunt

Hic tibi uel titani cum iungitur ipse sozori

Oppositusve manet conspiciendus adest.

Hic quibus in signis pbebus uel luna vehatur

Edocet: ambobus dat sua lora liber.

Hic tibi horiçonte ⁊ descendant horrida signa
Ascendant ve quibus monstat in arte modis.
Hic q̄ queq; dies p̄bebo fulgente trabatur
Quãq; brevis maneat stat tibi queq; dies
Hic modo inequalis nec non equalis habetur
Hora: quod ⁊ quadrans noscere posse docet.
Hic etiam tabula est qua constant omnia cunctis
Urbibus europæ hec datq; trahitq; gradus
Hoc germanus opus regio de monte Jobannes
Composuit: patrie nomen honosq; sue
Qui fuit ⁊ rethor summus qui solus ⁊ alta
Astrozum doctor verus in arte fuit.
Qui fuit ⁊ vates celebris: cui semp abunde
Et latia eloquium gratiaq; lingua dedit.
Multa viris latis iuuenis monumenta reliquit
Scribere sed nobis dum meliora parat:
Ha scelus infandum secuit sua fila sorozum.
Una trium celeri vipera seua manu
Notus in Italia est ⁊ qua regione potentes
Mergit equos p̄bebus nascitur vnde simul.

L. Joannes Lucilius sanctritter Helbronnenfis
Lectori. S.

Lui dedit ingenium diuina potentia: ⁊ artes
Qui benedalias solus in orbe tenet.
Hoc Augustensis ratdolt Germanus Erhardus
dispositis signis vndiq; pressit opus.
Viuat ut hic: semp voluentes fata sorozes.
Nam prodest multis lector amice roga.
Anno. S. 1485. Idus Octobrj Venetijs.

Tabula regionum.

D m g

D m g

Hybernia	m	1	16	59	Madebergum	a	0	16	54
Scotia	m	0	36	59	Erfordia	a	0	4	51
Oronium	m	0	52	53	Lips	a	0	16	51
Compostellum	m	1	40	45	Ingelstadium	a	0	4	49
Lyfbona	m	1	40	41	Nurenberga	a	0	0	49
Toletum	m	1	24	41	Katisbona	a	0	6	49
Lozduba	m	1	27	38	Ulma	a	0	0	47
Cesar Augusta	m	1	6	41	Praga	a	0	24	50
Rotbomagus	m	0	43	50	Uratiflauia	a	0	40	51
Parifus	m	0	30	48	Lracouia	a	0	56	51
Lugdunum	m	0	31	45	Lafchouia	a	0	56	50
Burdigalia	m	0	52	45	Buda	a	0	50	47
Quinio	m	0	32	44	Segnia	a	0	32	45
Itholofa	m	0	43	43	Vienna Panonie	a	0	15	48
Vienna prouincie	m	0	30	44	Natauia	a	0	10	48
Massilia	m	0	28	43	Salceburgum	a	0	12	48
Prugis	m	0	36	52	Judeburgum	a	0	14	47
Bandauum	m	0	24	52	Villacum	a	0	13	46
Traiectum	m	0	12	53	Brixina	a	0	8	45
Colonia agrippina	m	0	13	51	Venetie	a	0	10	45
Machilina	m	0	24	51	Ancon	a	0	14	44
Maguntia	m	0	15	50	Roma	a	0	20	42
Verbipolis	m	0	4	50	Larentum	a	0	44	40
Argentina	m	0	12	47	Brundufium	a	0	40	39
Conftantia	m	0	10	46	Neapolis	a	0	36	41
Augusta vindelicorum	a	0	10	46	Florentia	a	0	10	43
Dacia	a	0	36	58	Mediolanum	a	0	0	44
Suetia	a	0	28	62	Laurinum	m	0	2	43
Lubeca	a	0	16	56	Genua	m	0	4	43
Dantifcum	a	0	56	56	Sardinia	a	0	2	38
Prunfuiga	a	0	0	53	Sicilia	a	0	30	37

1475

1494

1513

	1475			1494			1513											
	Con.	Oppō.		Con.	Oppō.		Con.	Oppō.										
1	12	13			4	11	48	4	12	11								
2			12	8	29	8	4	30	12	22	5	8	3	38	12	19	19	
3	16	21	52			16	5	28				16	16	32				
4			1	18	41				1	2	51				1	11	59	
5	5	14	46			5	0	23	9	21	42	5	8	17				
6			9	9	56							13	18	27	9	5	18	
7	13	6	17	17	21	53	13	4	2	17	21	26			17	14	31	
8	2	13	19				2	13	58				2	9	39			
9	16	20	52	6	4	55	10	21	25	6	5	53	10	21	3	6	3	58
10			14	20	41				14	13	27				14	12	51	
11	18	16	48				18	6	51				18	4	37	3	20	28
12			3	13	40		7	20	27	3	1	10	7	13	6			
13	7	11	1						11	16	36				11	6	32	
14	15	18	34	11	8	32							15	13	29			
15			19	12	56		15	5	55						19	10	50	
16	4	6	18	8	23	2	4	23	0	19	2	58	4	8	23			
17	12	15	2							8	18	17			8	5	43	
18	1	22	25	16	5	58	12	12	37	16	6	38	12	2	36			
19			5	15	35		1	22	3	5	13	37	1	22	38	16	6	0
20	9	9	47				8	5	32						5	14	35	1
21			13	19	7					13	4	53	9	6	12	13	22	1
22	17	16	35				17	0	54	2	21	39	17	15	18	2	9	29
23			2	14	3		6	18	56				6	4	34			
24	6	11	3							10	16	26			10	0	40	
25			10	7	21								14	13	50			
26	14	8	1				14	2	48	18	20	18			18	10	49	
27	3	15	47	18	0	8	3	14	52				8	7	6			
28	11	22	44	7	7	7	11	23	41	7	7	36	11	20	57	7	2	30
29	19	13	17	15	18	22				15	14	34			15	15	20	
30			4	9	8		19	6	56				19	6	49	4	22	16
31		5	46				8	18	2	4	0	3	8	14	7			

KL**Januario****Solis****Lune****Ascendēs.**

		Circūcisio dñi		Solis		Lune		Ascendēs.						
Die	Let	Die	Let	h	m	h	m	h	m					
1	A		Circūcisio dñi	b	20	3	0	13	0	13	1	24	8	8
2	b	4	noñ	Octava sci stephani	21	4	0	26	0	26	1	24	10	
3	c	3	noñ	Octava sci ioannis	22	6	1	10	1	9	1	32	11	
4	d	2	noñ	Octa scōꝝ innocentiū	23	7	1	23	1	22	1	36	13	
5	e		Noñ	Uigilia	24	8	2	6	2	5	1	40	15	
6	f	8	id ^o	Epiphanie dñi	25	9	2	19	2	18	1	44	16	
7	g	7	id ^o	Clavis. lxx.	26	11	3	2	3	1	1	48	18	
8	H	6	id ^o	Erhardi epi	27	12	3	15	3	15	1	52	19	
9	b	5	id ^o	Juliani ⁊ socioꝝ ei ^o	28	13	3	29	3	28	1	56	20	
10	c	4	id ^o	Pauli primi heremite	29	14	4	12	4	11	2	0	22	
11	d	3	id ^o		III	0	16	4	25	4	24	2	4	24
12	e	2	id ^o		1	17	5	8	5	7	2	8	25	
13	f		Jous	Octava epiphanie	2	18	5	21	5	20	2	12	27	
14	g	19	kal	Febuarij. Felic/ i pincis	3	19	6	4	6	3	2	16	28	
15	H	18	kal		4	20	6	18	6	16	2	20	30	
16	b	17	kal	Marcelli pape	5	21	7	1	6	29	2	24	II	1
17	c	16	kal	Antonij monachi	6	22	7	14	7	12	2	28	2	
18	d	15	kal	Prisce virginis	7	23	7	27	7	25	2	32	4	
19	e	14	kal		8	24	8	10	8	8	2	36	5	
20	f	13	kal	Sabiāi ⁊ Sebastiaī mīꝝ	9	25	8	24	8	21	2	40	6	
21	g	12	kal	Agnētis virginis	10	26	9	7	9	4	2	44	7	
22	H	11	kal	Vincentij martyris	11	27	9	20	9	17	2	48	9	
23	b	10	kal		12	28	10	3	10	0	2	52	10	
24	c	9	kal	Timothei apli	13	29	10	16	10	14	2	56	11	
25	d	8	kal	Pauli conuersio	14	30	10	29	10	27	3	0	13	
26	e	7	kal		15	31	11	13	11	10	3	4	14	
27	f	6	kal		16	31	11	26	11	23	3	8	15	
28	g	5	kal	Clavis. xl.	17	32	0	9	0	6	3	12	16	
29	H	4	kal		18	33	0	22	0	19	3	16	18	
30	b	3	kal		19	33	1	5	1	2	3	20	19	
31	c	2	kal		20	34	1	18	1	15	3	24	20	

1 4 7 5				1 4 9 4				1 5 1 3			
Lon.		Oppō.		Lon.		Oppō.		Lon.		Oppō.	
1		12	2 59			12	13 0			12	6 32
2	16	15	39			16	0 28	1	21 55	16	8 52
3		1	11 16			5	18 58			1	5 27
4	5	5	56	9	23 40			9	15 24	5	2 46
5	13	16	20			13	16 31			13	10 47
6	2	23	34	7	7 50			17	8 44	2	23 16
7			6 15 49			2	0 25	6	15 52		6 16 6
8	10	8	46			10	7 20			10	8 15
9			14 13 52			18	21 23	14	2 35	18	15 24
10	8	10	58					3	17 5		3 8 23
11			3 8 25			7	13 37			7	2 15
12	7	5	54					11	10 44		
13	15	8	23	11	3 3	15	23 36			15	7 56
14	4	17	45	19	1 23			19	19 18		19 5 39
15			8 9 26			4	14 6	8	7 58	4	2 47
16	12	0	55	16	17 28	12	0 54	16	16 22	12	19 0
17	1	11	7			1	8 21				16 17 12
18			5 5 41			9	17 2	5	0 11	1	9 0
19	9	1	13					13	21 35	9	15 52
20			13 13 45			17	18 37			17	5 20
21	17	10	58					2	16 2	6	21 19
22			2 7 41			6	13 31				10 18 21
23	6	3	33	10	22 33			10	10 43		
24	14	18	22			14	16 33			14	7 22
25			18 9 53					18	9 40	3	22 9
26	3	1	19	7	16 56	3	2 3	7	17 53		7 16 8
27	11	8	59	15	9 18	11	9 21			11	9 14
28	19	5	30			19	19 10	15	1 39	19	16 25
								4	13 36		

KL**Februarius**

Solis

Lune

Ascendēs.

g	m	o	g	o	g	v	m	g
---	---	---	---	---	---	---	---	---

1	d		Brigide virginis	ec	21	34	2	2	1	28	3	28	II	21
2	e	4 non	Purificatio marie		22	35	2	15	2	11	3	32		22
3	f	3 non	Blasij episcopi		23	36	2	28	2	24	3	36		23
4	g	2 non			24	36	3	11	3	7	3	40		24
5	H	Non	Agathe virginis		25	37	3	24	3	20	3	44		25
6	b	8 id	Dorothee virginis		26	37	4	8	4	3	3	48		26
7	c	7 id			27	38	4	21	4	16	3	52		27
8	d	6 id			28	36	5	4	5	0	3	55		28
9	e	5 id	Apollonie virginis		29	38	5	17	5	13	4	0		29
10	f	4 id	Scolastice virginis	K	0	39	6	0	5	26	4	4		30
11	g	3 id			1	39	6	13	6	9	4	8	sp	1
12	H	2 id			2	39	6	27	6	22	4	12		2
13	b	Idus			3	39	7	10	7	5	4	16		3
14	c	16 kal	Mar. Valentini mris		4	39	7	23	7	18	4	20		4
15	d	15 kal			5	40	8	6	8	1	4	24		5
16	e	14 kal	Juliane virginis		6	40	8	19	8	14	4	28		6
17	f	13 kal			7	40	9	2	8	27	4	32		7
18	g	12 kal			8	40	9	16	9	10	4	36		8
19	H	11 kal			9	40	9	29	9	23	4	40		9
20	b	10 kal			10	40	10	12	10	6	4	44		10
21	c	9 kal			11	40	10	25	10	19	4	48		11
22	d	8 kal	Cathedra Petri		12	40	11	8	11	2	4	52		12
23	e	7 kal	Vigilia		13	40	11	22	11	16	4	56		13
24	f	6 kal	Matthie apostoli		14	39	0	5	11	29	5	0		14
25	g	5 kal			15	39	0	18	0	12	5	4		14
26	H	4 kal			16	39	1	1	0	25	5	8		15
27	b	3 kal			17	38	1	14	1	8	5	12		16
28	c	2 kal			18	38	1	27	1	21	5	16		17
					19	37								

1 4 7 5

1 4 9 4

1 5 1 3

	1 4 7 5			1 4 9 4			1 5 1 3											
	Lon.	Oppō.		Lon.	Oppō.	Lon.	Oppō.											
1	8	23	46	4	2	25	8	8	58				4	8	30			
2				12	21	15				12	5	12	8	1	11	12	18	44
3							16	18	31				10	2	7	1	13	9
4	16	6	48							1	15	19	5	20	58			
5	5	18	17	1	1	1	5	11	18							9	18	14
6				9	10	48				9	6	25						
7	13	1	45	17	17	41	13	2	41	17	18	15	13	0	33	17	17	50
8	2	10	13				2	9	40				2	10	17			
9	10	21	46	6	3	31	10	17	9	6	1	13	10	17	41	6	2	10
10				14	7	24				14	16	58				14	9	42
11	18	4	54				18	13	2				18	3	7	3	21	21
12	7	23	7	3	2	12				3	9	39	7	22	22			
13				11	19	16	7	7	7							11	12	40
14	15	19	27				15	14	33	11	4	36						
15				19	11	26				19	8	53	15	1	55	19	22	46
16	4	3	2	8	18	26	4	2	18	8	18	55	4	18	54			
17	12	9	56				12	10	54				12	8	26	8	14	9
18				16	5	54	1	18	13	16	1	47	1	17	51	16	2	27
19	1	0	53	5	20	45				5	11	25				5	9	22
20	6	17	27				9	5	28				9	1	15			
21										13	14	38	17	20	25	13	0	29
22				13	6	42	17	12	6							2	17	5
23	17	3	6	2	22	35				2	9	26	6	14	18			
24	6	17	5	10	10	41	6	6	25							10	13	46
25	14	3	8	18	18	37				10	2	42	14	22	8			
26	3	10	22				14	3	27	18	19	33				18	16	37
27	11	19	37	7	2	38	3	11	9	7	19	25	3	10	10			
28							11	18	2	15	13	32	11	18	57	7	2	54
29	19	22	6	15	1	0	19	8	20							15	9	49
30				4	19	29				4	4	5	19	2	6	4	19	7
31	8	16	54				8	0	36	12	21	45	8	13	1			

KL**Martius****Solis****Lune****Ascendens.**

				Solis		Lune		Ascendens.					
				h ^m	h ^m	h ^m	h ^m	g					
1	d			X	20	37	2	11	2	4	5	20	18
2	e	6 non	Simplicis pape		21	36	2	24	2	17	5	24	19
3	f	5 non			22	36	3	7	3	0	5	28	20
4	g	4 non	Adriani martyris		23	35	3	20	3	13	5	32	20
5	A	3 non			24	35	4	3	3	26	5	36	21
6	b	2 non	Victoris martyris		25	34	4	16	4	9	5	40	22
7	c	Non	Perpetue & Felicitatis		26	33	5	0	4	22	5	44	23
8	d	8 id ^o			27	32	5	13	5	5	5	48	24
9	e	7 id ^o			28	31	5	26	5	18	5	52	25
10	f	6 id ^o			29	30	6	9	6	1	5	55	26
11	g	5 id ^o	Clavis pasce	Y	0	29	6	22	6	15	6	0	26
12	A	4 id ^o	Gregorij pape		1	28	7	6	6	28	6	4	27
13	b	3 id ^o			2	27	7	19	7	11	6	8	28
14	c	2 id ^o			3	26	8	2	7	24	6	12	29
15	d	Idus			4	25	8	15	8	7	6	16	29
16	e	17 kal	Aprilis		5	24	8	28	8	20	6	20	30
17	f	16 kal	Gertrudis virginis		6	23	9	11	9	3	6	24	1
18	g	15 kal			7	22	9	25	9	16	6	28	2
19	A	14 kal			8	21	10	8	9	29	6	32	3
20	b	13 kal			9	20	10	21	10	12	6	36	3
21	c	12 kal	Benedicti abbatis		10	18	11	4	10	25	6	40	4
22	d	11 kal			11	17	11	17	11	8	6	44	5
23	e	10 kal			12	16	0	0	11	21	6	48	6
24	f	9 kal			13	15	0	14	0	4	6	52	6
25	g	8 kal	Annunciatio marie		14	13	0	27	0	17	6	56	7
26	A	7 kal			15	12	1	10	1	1	7	0	8
27	b	6 kal			16	10	1	23	1	14	7	4	9
28	c	5 kal			17	9	2	6	1	27	7	8	9
29	d	4 kal			18	8	2	20	2	10	7	13	10
30	e	3 kal			19	7	3	3	2	23	7	16	11
31	f	2 kal			20	6	3	16	3	6	7	20	12

1 4 7 5

1 4 9 4

1 5 1 3

	Lon.			Oppō.				Lon.			Oppō.				Lon.			Oppō.			
1				12	13	58										16	19	8	12	7	54
2	16	18	55				16	10	23										1	16	32
3				1	11	50				1	6	0				5	13	35			
4	5	4	4	9	19	45	5	0	41	9	18	25							9	9	58
5	13	11	1				13	11	12							13	11	16			
6	2	21	33	17	3	51	2	18	19	17	2	35				2	19	10	17	3	28
7				6	16	8				6	10	28							6	10	35
8	10	11	41				10	3	20							10	2	3	14	1	1
9	18	21	24	4	0	14				14	8	2				18	15	40			
10				3	17	58	18	5	4										3	11	16
11	7	13	46				7	23	52	3	2	27				7	7	40			
12				11	8	38				11	20	59							11	4	41
13	15	4	15	19	19	43	15	2	33	19	19	34				15	17	31			
14	4	11	6				4	11	53										19	13	16
15	2	18	45	8	2	42	2	19	6	8	3	38				4	8	7	8	1	59
16				16	19	15				16	11	25				12	19	0	16	10	29
17	1	15	26				1	4	57	5	23	22				1	2	8	5	18	8
18				5	12	40	9	18	46							9	11	51			
19	9	9	37													0			13	14	59
20				13	21	20				13	7	3				17	11	53			
21	17	16	25				17	4	13										2	9	13
22	6	3	44	2	10	31	6	20	51	2	0	56				6	6	38			
23	14	11	5	9	20	11				10	15	53							10	3	49
24	3	19	30	18	3	0	14	12	1							14	9	57			
25				7	12	49	3	18	53	18	3	31				3	10	32	18	3	7
26	11	7	1				1	2	21	7	10	26							7	11	22
27				5	16	43	19	22	15	5	2	13				11	2	51	15	18	54
28	19	14	7							4	19	3				19	12	12			
29				4	11	24	8	16	17										4	6	32
30	8	8	2							12	13	42				8	2	43	12	21	48

KL**Aprilis****Solis****Lune****Ascendēs.**

			g	m	h	g	m	h	g	m	h	
1	g		v	21	4	3	29	3	19	7	24 kl	13
2	A	4 noni		22	3	4	12	4	2	7	28	13
3	b	3 noni		23	1	4	25	4	15	7	32	14
4	c	2 noni	Ambrosij archiepi	23	59	5	9	4	28	7	35	14
5	d	Idi		24	58	5	22	5	11	7	39	15
6	e	8 idus		25	56	6	5	5	24	7	43	16
7	f	7 idus		26	54	6	18	6	7	7	46	16
8	g	6 idus	Marie egyptiace	27	52	7	1	6	20	7	49	17
9	A	5 idus		28	50	7	14	7	3	7	53	18
10	b	4 idus		29	48	7	28	7	16	7	57	18
11	c	3 idus	8	0	47	8	11	8	0	8	0	19
12	d	2 idus		1	45	8	24	8	13	8	4	20
13	e	Idus		2	43	9	7	8	26	8	8	21
14	f	18 kal	Maij Tyburtij z Valeriai	3	41	9	20	9	9	8	12	22
15	g	17 kal	Clavis rogationu	4	38	10	4	9	22	8	16	22
16	A	16 kal		5	36	10	17	10	5	8	20	23
17	b	15 kal		6	34	11	0	10	18	8	24	24
18	c	14 kal		7	32	11	13	11	1	8	28	25
19	d	13 kal		8	30	11	26	11	14	8	32	26
20	e	12 kal		9	28	0	9	11	27	8	36	26
21	f	11 kal		10	25	0	23	0	10	8	40	27
22	g	10 kal		11	23	1	6	0	23	8	44	28
23	A	9 kal	Georgij martyris	12	21	1	19	1	6	8	48	28
24	b	8 kal		13	18	2	2	1	19	8	52	29
25	c	7 kal	Marci euangeliste	14	16	2	15	2	2	8	56	29
26	d	6 kal		15	14	2	28	2	16	9	0	30
27	e	5 kal		16	11	3	12	2	29	9	4	30
28	f	4 kal	Ulricus martyris	17	8	3	25	3	12	9	8 iii	1
29	g	3 kal	Clavis pentecostes	18	6	4	8	3	25	9	12	2
30	A	2 kal		19	4	4	21	4	8	9	16	2

1 4 7 5
 Lon. Oppō.

1 4 9 4
 Lon. Oppō.

1 5 1 3
 Lon. Oppō.

1				12	4	18		16	23	35					16	20	56				
2	16	4	23	1	20	20					1	17	49					1	7	44	
3	5	11	53					5	10	12					5	3	48	9	23	1	
4	13	20	42	9	3	13		13	18	44	9	3	54		13	19	41				
5				17	14	42					17	10	32					17	11	12	
6	2	9	40					2	2	57	6	20	6		2	2	35	6	18	4	
7				6	5	32		10	14	8					10	9	54				
8	10	2	9	14	15	23					14	23	18					14	9	8	
9	18	11	41					18	20	42					18	5	2				
10				3	7	5					3	18	0		7	22	51	3	1	40	
11	7	1	34	11	19	6		7	14	55								11	20	15	
12	15	11	33					15	11	50	11	11	9								
13	4	18	42	19	2	59		4	19	29	19	3	53		15	6	33				
14				8	10	57					8	10	52		4	18	30	19	0	58	
15	12	3	55					12	2	18	16	21	44		12	3	14	7	8	11	11
16				16	9	13		1	16	32					1	10	20	16	18	2	
17	1	6	17								5	12	15		9	21	11	5	3	20	
18				5	3	40		9	8	44											
19	9	0	59								13	22	0					13	5	48	
20				13	9	13		17	19	23					17	3	2				
21	17	2	57	2	19	51					2	13	59		6	21	30	2	0	31	
22	6	12	2	10	3	43		6	8	41								10	17	53	
23	14	18	57	18	11	44		14	19	8	10	2	21		14	19	11				
24	3	5	22	7	23	55					18	10	31					18	11	22	
25	11	19	24					3	2	10	7	18	16		3	3	1	7	18	27	
26								11	11	5	15	15	44		11	9	49				
27				15	7	53		19	12	42					19	23	20	15	4	46	
28	19	4	59								4	9	53					4	18	52	
29	8	21	19	4	1	34		8	7	42					8	15	14				
30				12	16	11					12	4	30		10			12	12	13	
31	16	11	54					16	10	6					16	1	2	1	20	45	

KL**Maïus**

Solis

Lune

Ascendēs.

			g̃m̃	ḡ	ḡ	ḡ	ḡ	D̃m̃	ḡ				
1	b		Philippi z iacobi ap̃toꝝ	20	1	5	4	4	21	9	19	mp	3
2	c	6 noñ		20	59	5	18	5	4	0	23		4
3	d	5 noñ	Inuentio sc̃e crucis	21	56	6	1	5	17	9	27		4
4	e	4 noñ		22	54	6	14	6	0	9	30		5
5	f	3 noñ		23	51	6	27	6	13	9	33		5
6	g	2 noñ	Joānis añ portā latinā	24	48	7	10	6	26	9	37		6
7	H	Noñ		25	46	7	23	7	9	9	40		7
8	b	8 id̃	Appitio sc̃i michaelis	26	43	8	7	7	22	9	44		7
9	c	7 id̃		27	41	8	20	8	5	9	48		8
10	d	6 id̃	Epimachi z socioꝝ eĩ	28	38	9	3	8	19	9	52		9
11	e	5 id̃		29	35	9	16	9	2	9	56		10
12	f	4 id̃	Pancratij martiris II	0	32	9	29	9	15	10	0		10
13	g	3 id̃	Seruatij epi	1	30	10	12	9	28	10	4		11
14	H	2 id̃		2	27	10	26	10	11	10	8		11
15	b	Idus	Sophie virginis	3	24	11	9	10	24	10	12		12
16	c	17 kal̃	Junij	4	21	11	22	11	7	10	15		13
17	d	16 kal̃		5	19	0	5	11	20	10	19		13
18	e	15 kal̃		6	16	0	18	0	3	10	23		14
19	f	14 kal̃	Potentiane virginis	7	13	1	2	0	16	10	26		15
20	g	13 kal̃		8	10	1	15	0	29	10	30		15
21	H	12 kal̃		9	7	1	28	1	12	10	34		16
22	b	11 kal̃	Helene regine	10	4	2	11	1	25	10	38		17
23	c	10 kal̃		11	1	2	24	2	8	10	42		18
24	d	9 kal̃		11	58	3	7	2	21	10	46		18
25	e	8 kal̃	Urbani pape	12	55	3	21	3	4	10	50		19
26	f	7 kal̃		13	53	4	4	3	17	10	53		19
27	g	6 kal̃		14	50	4	17	4	1	10	57		20
28	H	5 kal̃		15	47	5	0	4	14	11	1		20
29	b	4 kal̃		16	44	5	13	4	27	11	5		21
30	c	3 kal̃		17	41	5	26	5	10	11	8		22
31	d	2 kal̃	Petronelle virginis	18	38	6	10	5	23	11	12		22

1 4 7 5

1 4 9 4

1 5 1 3

	1 4 7 5			1 4 9 4			1 5 1 3											
	Con.	Oppō.		Con.	Oppō.		Con.	Oppō.										
1	5	18	42	1	3	21	5	19	26	1	3	9	5	15	35			
2				9	10	6				9	11	11				5	9	30
3	13	7	19				13	2	15	17	18	54	13	2	39	17	17	59
4	2	22	45	17	2	37	2	12	23				2	9	36			
5				6	19	36				6	6	44	10	18	16	6	1	35
6	10	16	51				10	2	5							14	22	13
7	18	23	42	14	4	44				14	14	16	18	19	6			
8				3	17	48	18	11	26							3	16	22
9	7	11	3				7	4	7	3	8	7	7	13	47			
10	15	18	23	11	3	29	15	19	20	11	23	5				11	10	57
11				19	10	17				19	10	50	15	17	9			
12	4	2	44	8	20	2	4	2	10	8	17	22				19	10	21
13	12	14	11				12	9	35				4	2	48	8	18	37
14				10	23	42				16	9	18	12	10	7	16	2	6
15	1	21	8				1	5	18				1	19	24	5	3	36
16				5	18	22	9	23	12	5	2	2	9	8	45			
17	9	15	11													13	20	38
18				13	18	53				13	11	18	17	17	52			
19	17	11	30				17	6	33							3	14	40
20	6	19	1	2	3	28	6	18	14	2	0	51	6	10	45			
21	14	3	43	10	10	23				10	10	50				10	5	59
22	3	16	33	18	21	40	14	1	49	18	17	36	14	2	46	18	18	18
23				7	12	22	7	9	57				3	9	36			
24	11	8	56				11	21	3	7	3	4	11	17	3	7	1	7
25				15	22	12				15	6	6				15	16	0
26	19	18	30				19	3	28				19	11	49			
27				4	13	58	8	21	42	4	0	51				4	8	27
28	8	8	27							12	17	58	8	5	36			
29	16	18	34	12	2	4	16	18	47				6	13	23	12	3	0
30				1	9	59				1	10	51				1	7	51

KL**Junius****Solis****Lune****Ascendēs.**

		Solis		Lune		Ascendēs.						
		3	4	5	6	7	8					
1	e	Nicomedis martyris	II	19	35	6	23	6	6	11	16	23
2	f	4 noni	Marcellini z Petri	20	32	7	6	6	19	11	20	24
3	g	3 noni	Erasmi episcopi	21	29	7	19	7	2	11	24	24
4	H	2 noni		22	26	8	2	7	15	11	28	25
5	b	1 noni	Bonifacii pape	23	23	8	16	7	28	11	33	25
6	c	8 idus		24	20	8	29	8	11	11	38	26
7	d	7 idus		25	17	9	12	8	24	11	41	27
8	e	6 idus		26	14	9	25	9	7	11	46	27
9	f	5 idus	Primi z Feliciani	27	11	10	8	9	20	11	50	28
10	g	4 idus		28	8	10	21	10	3	11	54	29
11	H	3 idus	Barnabe apostoli	29	5	11	5	10	17	11	57	29
12	b	2 idus		30	2	11	18	11	0	12	0	30
13	c	Idus		0	59	0	1	11	13	12	4	30
14	d	18 Kal	Julij	1	56	0	14	1	26	12	7	1
15	e	17 Kal	Uini martyris	2	53	0	27	0	9	12	10	1
16	f	16 Kal		3	50	1	10	0	22	12	14	2
17	g	15 Kal		4	47	1	24	1	5	12	17	3
18	H	14 Kal	Marci z Marcelliani	5	44	2	7	1	18	12	20	2
19	b	13 Kal	Bervasij z Protasij	6	41	2	20	2	1	12	24	4
20	c	12 Kal		7	38	3	3	2	14	12	28	5
21	d	11 Kal	Albani martyris	8	35	3	16	2	27	12	32	6
22	e	10 Kal	Achacij z Sociozei	9	32	4	0	3	10	12	36	6
23	f	9 Kal	Uigilia	10	29	4	13	3	23	12	40	7
24	g	8 Kal	Johannis baptiste	11	26	4	26	4	6	12	44	8
25	H	7 Kal		12	23	5	9	4	19	12	47	8
26	b	6 Kal	Johannis z Pauli	13	21	5	22	5	3	12	51	9
27	c	5 Kal	Septem dormientiu	14	18	6	5	5	16	12	55	10
28	d	4 Kal	Leonis pape Uigilia	15	15	6	19	5	29	12	59	10
29	e	3 Kal	Petri z Pauli aplos	16	12	7	2	6	12	13	3	11
30	f	2 Kal	Comemoratio sci Pauli	17	9	7	15	6	25	13		11

		1 4 7 5				1 4 9 4				1 5 1 3								
		Lon.	Oppö.	Lon.	Oppö.	Lon.	Oppö.	Lon.	Oppö.	Lon.	Oppö.							
1	5	142	9	17	54	5	2	30	9	17	52	5	1	26	9	18	9	
2	13	19	31			13	10	50				13	9	18				
3			17	15	56	2	23	20	17	4	41	2	17	15	17	1	0	
4	2	12	58						6	18	58				6	10	12	
5			6	10	29	10	15	27				10	4	0				
6	10	7	41	14	16	7									14	12	29	
7	18	9	52						14	4	43	18	9	52				
8	7	18	52	3	2	46	18	1	9	3	20	46			3	7	12	
9			1	10	41	7	15	28	11	9	13	7	7	4	13			
10	15	1	53	19	18	38	15	2	6	19	17	31			11	0	37	
11	4	12	13				4	9	7				15	2	7	19	18	19
12			8	6	42	12	18	0	8	1	18	4	10	0	8	1	26	7
13	12	2	12						16	22	30	12	16	50	16	11	39	1
14			16	14	38	1	19	26				1	6	11				
15	1	11	46						5	16	46	9	22	3	5	1	41	
16			5	8	21	9	14	10										
17	9	4	8						13	23	6				13	11	18	
18	17	18	55	13	3	8	17	17	4			17	7	50				
19	6	1	46	7	2	10	24		2	10	9	6	22	32	2	3	39	1
20	14	14	15	0	17	20	6	2	31	10	18	16			10	16	28	1
21			8	9	32	14	9	18				14	9	43				
22	3	5	39				3	19	21	18	1	55	3	16	40	18	1	6
23	11	23	46	7	2	28			7	13	43				7	8	40	
24							11	9	1	15	21	10	11	1	18			
25			15	11	35	19	18	24							15	5	11	
26	19	6	44						4	15	6	19	2	6	4	23	19	
27	8	18	11	4	0	53	8	11	5			8	20	45				
28			12	10	50				12	6	10				12	17	58	
29	16	1	37	1	17	28	16	2	33	1	18	4	16	0	20	1	17	35
30	5	9	57				5	9	27				5	10	3			
31			9	3	11	13	21	21	9	0	58	13	16	51	9	1	49	

KL**Julius****Solis****Lune****Ascendēs.**

			g	m	o	g	o	g	D	m	g
1	g	Octā sci ioānis baptiste	18	6	7	28	7	8	13	12	12
2	H	6 noni	19	3	8	11	7	21	13	15	13
3	b	5 noni	20	0	8	24	8	4	13	19	14
4	c	4 noni	20	57	9	8	8	17	13	23	14
5	d	3 noni	21	54	9	21	9	0	23	27	15
6	e	2 noni	22	51	10	4	9	13	13	30	15
7	f	Noni	23	48	10	17	9	26	13	34	16
8	g	8 id ^o	24	45	11	0	10	9	13	30	16
9	H	7 id ^o	25	42	11	14	10	22	13	41	17
10	b	6 id ^o	26	40	11	27	11	5	13	44	18
11	c	5 id ^o	27	37	0	10	11	18	13	48	18
12	d	4 id ^o	28	34	0	23	0	2	13	52	16
13	e	3 id ^o	29	31	1	6	0	15	13	56	20
14	f	2 id ^o	0	28	1	19	0	28	13	59	20
15	g	Idus	1	26	2	3	1	11	14	3	21
16	H	17 kal	2	23	2	16	1	24	14	7	21
17	b	16 kal	3	21	2	29	2	7	14	11	22
18	c	15 kal	4	18	3	12	2	20	14	14	23
19	d	14 kal	5	15	3	25	3	3	14	18	24
20	e	13 kal	6	12	4	8	3	16	14	22	24
21	f	12 kal	7	9	4	22	3	29	14	25	25
22	g	11 kal	8	6	5	5	4	12	14	29	26
23	H	10 kal	9	4	5	18	4	25	14	33	26
24	b	9 kal	10	2	6	1	5	8	14	37	27
25	c	8 kal	11	0	6	14	5	21	14	41	28
26	d	7 kal	11	57	6	28	6	4	14	45	28
27	e	6 kal	12	55	7	11	6	18	14	49	29
28	f	5 kal	13	52	7	24	7	1	14	53	29
29	g	4 kal	14	50	8	7	7	14	14	57	30
30	H	3 kal	15	47	8	20	7	27	15	0	30
31	b	2 kal	16	45	9	3	8	10	15	3	m

1 4 7 5
Lon. Oppō.

1 4 9 4
Lon. Oppō.

1 4 1 3
Lon. Oppō.

1	13	9	37							17	16	26								17	9	20				
2				17	6	49				2	12	26								2	2	38	6	20	48	
3	2	4	13										6	9	10					10	15	51	1			
4	10	22	22	6	1	31				10	6	23														
5	18	18	53	14	2	12							14	18	32								14	3	47	
6				3	10	56				18	13	51								18	1	6	3	21	56	
7	7	2	29	11	17	51				7	1	38	7	3	8	12				7	18	4				
8	15	11	7							15	9	18		11	18	16							11	13	16	
9	4	23	53	19	5	3				4	17	26		19	1	6				15	10	14				
10				8	19	48								8	10	33				4	17	12	19	1	50	
11	12	16	23							12	4	32								12	0	29	7	8	8	41
12														16	13	33				1	19	20	16	23	30	1
13				16	5	42				1	10	58											5	15	59	
14	1	2	2	5	21	34								5	8	18				9	13	9				
15	9	16	7							9	4	17														
16				13	10	56								13	9	46				12	21	4	13	1	36	
17	17	2	19	2	17	47				17	2	32		2	18	41							2	15	37	
18	6	9	29	10	1	43	7			6	10	29								6	9	13	10	1	59	
19	14	3	19	15	23	45				14	18	38		10	1	43				14	17	10				
20	3	20	50											18	12	27							18	8	45	
21				7	18	14				3	7	12								3	1	8	7	18	7	
22	11	15	38											7	2	54				11	11	57				
23										11	22	23	1	15	12	42							15	20	27	
24	19	17	57	15	0	5				19	9	11								19	17	53				
25				4	10	54				8	23	37		4	4	53							4	15	16	
26	8	3	8	12	18	53								12	17	24				8	12	20				
27	16	10	5							16	10	19								16	10	20	12	8	46	
28	5	20	29	1	2	51				5	17	24		1	1	44				5	18	18	1	2	34	
29				9	15	1								9	9	31							9	9	44	
30										13	10	32								13	2	20	17	20	0	
31	13	1	35	17	23	2								17	6	53				2	14	35				

KL**Augustus**

Solis

Lune

Ascendēs.

g̃|m̃ | | ē| g̃l | ē| g̃l | | m̃ | g̃

			Solis	Lune	Ascendēs.
1	c	Petri ad vincula	17 43	9 17	8 23
2	d	Stephani pape	18 40	10 0	9 6
3	e	Inuentio sci Stephani	19 38	10 13	9 19
4	f		20 36	10 26	10 2
5	g	Non	21 33	11 9	10 15
6	A	Sixti pape	22 31	11 22	10 28
7	b	Afre martyris	23 29	0 6	11 11
8	c	Lyriaci 2 socioꝝ eiꝝ	24 26	0 19	11 24
9	d	Vigilia	25 24	1 2	0 7
10	e	Laurentij martyris	26 22	1 15	0 20
11	f	Lyburtij martyris	27 20	1 28	1 3
12	g	Clare virginis	28 18	2 12	1 17
13	A	Idus Dippoliti martyris	29 16	2 25	2 0
14	b	Septembꝛis Vigilia	0 14	3 8	2 13
15	c	Assumptio marie	1 12	3 21	2 26
16	d		2 10	4 4	3 9
17	e	Octaua sci laurentij	3 8	4 17	3 22
18	f	Agapiti martyris	4 6	5 1	4 5
19	g		5 4	5 14	4 18
20	A	Bernardi confessoris	6 3	5 27	5 1
21	b		7 1	6 10	5 14
22	c	Timothei 2 Symphoniāi	7 59	6 23	5 27
23	d	Vigilia	8 58	7 6	6 10
24	e	Bartholomei ap̃li	9 56	7 20	6 23
25	f		10 55	8 3	7 6
26	g		11 53	8 16	7 19
27	A	Ruffi martyris	12 51	8 29	8 3
28	b	Augustini epi	13 50	9 12	8 16
29	c	Decollatio Jo. baptiste	14 48	9 26	8 29
30	d	Felicitis 2 Audacti	15 47	10 9	9 12
31	e		16 46	10 22	9 25

1 4 7 5				1 4 9 4				1 5 1 3													
Lon.		Oppō.		Lon.		Oppō.		Lon.		Oppō.											
1	2	20	14			2	10	53			10	6	31	6	10	7					
2				6	16	52	10	22	41	6	1	14									
3	10	12	42	14	11	40								14	19	49					
4	18	3	30	3	19	1			14	7	38	15	16	28							
5	7	10	24				15	1	39	3	18	27			3	12	17				
6	15	22	59	11	2	0	7	11	7			7	7	11							
7				19	18	19	15	18	1	11	2	58	15	18	47	11	11	11	7		
8	4	14	29				4	4	10	19	10	41			19	9	51				
9				8	11	24	2	17	57	8	22	33	4	1	26	8	17	29	7		
10	12	8	43										15	10	11	7	16	14	9	1	
11				16	20	36				16	6	12	1	11	4						
12	1	15	45				1	3	26							5	8	24			
13				5	9	57	9	20	12	5	0	13	9	5	53						
14	9	3	14	13	19	9				13	19	45				13	15	20			
15	17	10	41				17	11	38				17	9	28						
16	6	19	18	7	2	37	6	18	36	2	3	12	6	19	13	2	2	46			
17	14	19	1	10	12	26				10	10	9				10	11	6			
18				18	16	18	14	6	39				14	2	4	18	18	39			
19	3	13	47				3	21	55	15	1	51	3	12	0						
20				7	11	7				7	18	43				7	6	15			
21	11	8	0				11	16	2												
22				15	11	45	19	23	29	15	4	10	11	1	30	15	13	31			
23	19	4	25	4	20	25				4	17	50	19	10	50						
24	8	12	1				8	11	17				8	3	50	4	7	42			
25	16	20	52	12	3	26	16	18	58	12	3	54	16	19	55	12	23	7	7		
26				1	14	53				1	10	48				1	11	29			
27	5	9	54				5	3	14				5	2	55	7	9	18	26		
28				9	5	48				9	20	26	13	14	30						
29	15	18	53				13	2	31	17	23	44				17	9	33			
30				17	15	53	2	21	13				2	5	30						
													10	23	29						

KL**September**

Solis

Lune

Ascendēs.

				g m	ā g	ā g	h m	g
1	f	Egidij abbas	mp	17 44	11 5	10 8	17 8	m 24
2	g	4 non		18 43	11 18	10 21	17 12	24
3	H	3 non		19 42	0 1	11 4	17 16	25
4	b	2 non		20 40	0 15	11 17	17 20	26
5	c	Non		21 39	0 28	0 0	17 24	27
6	d	8 id		22 38	1 11	0 13	17 28	28
7	e	7 id		23 37	1 24	0 26	17 32	28
8	f	6 id	Natalis marie	24 36	2 7	1 9	17 36	29
9	g	5 id	Borgonij martyris	25 34	2 20	1 22	17 40	30
10	H	4 id		26 33	3 4	2 5	17 44	30
11	b	3 id	Protii & Hyacinthi	27 32	3 17	2 19	17 48	† 1
12	c	2 id		28 31	4 0	3 2	17 32	2
13	d	Idus		29 30	4 13	3 15	17 56	3
14	e	18 kal	Octobr' Exalt' s. cruc' ☩	0 29	4 26	3 28	18 0	4
15	f	17 kal		1 28	5 10	4 11	18 4	4
16	g	16 kal		2 28	5 23	4 24	18 8	5
17	H	15 kal		3 27	6 6	5 7	18 12	5
18	b	14 kal		4 26	6 19	5 20	18 16	6
19	c	13 kal		5 25	7 2	6 3	18 20	7
20	d	12 kal	Vigilia	6 25	7 15	6 16	18 24	8
21	e	11 kal	Matthaei ap'li	7 24	7 29	6 29	18 28	9
22	f	10 kal	Mauritij & socioꝝ ei'	8 24	8 12	7 12	18 32	10
23	g	9 kal		9 23	8 25	7 25	18 36	11
24	H	8 kal		10 23	9 8	8 8	18 40	11
25	b	7 kal		11 22	9 21	8 21	18 44	12
26	c	6 kal		12 22	10 4	9 4	18 48	13
27	d	5 kal	Colme & Damiani	13 21	10 18	9 18	18 52	14
28	e	4 kal		14 21	11 1	10 1	18 56	15
29	f	3 kal	Michaelis archangeli	15 20	11 14	10 14	19 0	16
30	g	2 kal	Hieronimi confessoris	16 20	11 27	10 27	19 4	17

1 4 7 5
 Lon. Oppō.

1 4 9 4
 Lon. Oppō.

1 5 1 3
 Lon. Oppō.

1	2	12	13	6	7	43	7					6	18	36					6	2	13
2	10	2	17	7	14	20	57		10	15	36										
3	18	12	23									14	19	55					14	11	55
4	7	19	37	3	3	51		18	12	40					18	7	22				
5				11	11	56		7	20	25	3	4	49		7	19	27	3	1	53	
6	15	13	49					15	4	57	11	11	52					11	12	12	
7				19	10	24		4	17	45	19	22	52		15	3	21	19	19	10	
8	14	7	34								8	13	33		4	11	29				
9				8	5	2		12	10	8					12	22	30	8	4	33	
10	12	2	28								16	23	34					16	7	20	
11				16	10	45		1	20	2					1	4	48				
12	1	4	31	5	21	28					5	15	40		9	23	17	5	2	14	
13	9	13	41					9	10	22											
14	17	20	42	13	4	32		17	20	53	13	5	25		17	21	2	13	4	7	
15				2	14	38					2	12	20					2	13	13	
16	6	7	23					6	4	5	10	20	18		6	4	56	10	20	25	
17	14	12	56	10	2	4		14	21	44					14	13	14				
18				18	10	24					18	18	15					18	7	2	
19	3	7	37					3	15	16					3	1	47	7	21	26	
20				5	4	13					7	12	43								
21	11	0	2	19	22	40		11	10	12	15	18	57		11	17	57				
22	19	14	29					19	12	52								15	7	23	
23	8	21	25	4	5	59		8	22	14	4	5	53		19	3	58	4	23	43	
24				12	13	3					12	14	2		8	18	35	12	12	29	
25	16	10	30					16	5	13	1	21	59		16	5	31	1	16	57	
26				1	5	57		5	15	38					5	12	38				
27	5	2	17	9	23	18					9	10	11					9	4	47	
28								13	20	42					13	5	41				
29	13	12	25								17	18	14					17	2	2	
30				17	8	24		2	15	29					2	23	6	6	20	31	
31	2	2	28	6	21	36					6	12	11		10	18	2				

KL**October****Solis****Lune****Ascendēs.**

			g̃ ñ	ō g̃	ō ā	h̃ h̃	h̃ g̃	
1	A	Remigij epi	17 20	0 10	11 10	19 8	18	
2	b	6 noñ	Leodegarij epi	18 19	0 24	11 23	19 12	19
3	c	5 noñ		19 19	1 7	0 6	19 16	29
4	d	4 noñ	Francisci cōfessoris	20 19	1 20	0 19	19 20	20
5	e	3 noñ		21 19	2 3	1 2	19 24	21
6	f	2 noñ	Magni confessoris	22 19	2 16	1 15	19 28	22
7	g	Noñ		23 19	2 29	1 28	19 32	23
8	A	8 id̃		24 19	3 13	2 11	19 36	24
9	b	7 id̃	Dionysij z socioꝝ ei⁹	25 19	3 26	2 24	19 40	25
10	c	6 id̃		26 19	4 9	3 7	19 44	26
11	d	5 id̃		26 19	4 22	3 20	19 48	27
12	e	4 id̃		28 20	5 5	4 4	19 52	28
13	f	3 id̃		29 20	5 18	4 17	19 56	29
14	g	2 id̃	Salixti pape m	0 20	6 2	5 0	20 0	30
15	A	Idus		1 20	6 15	5 13	20 4	h 1
16	b	17 kal̃	Novēbris Galli cōffor̃	2 21	6 28	5 26	20 8	2
17	c	16 kal̃	Martbe hospite xpi	3 21	7 11	6 9	20 12	3
18	d	15 kal̃	Luce euangeliste	4 21	7 24	6 22	20 16	4
19	e	14 kal̃		5 22	8 8	7 5	20 20	5
20	f	13 kal̃		6 22	8 21	7 18	20 24	6
21	g	12 kal̃	Undecim miliū virginū	7 23	9 4	8 1	20 28	7
22	A	11 kal̃	Seueri episcopi	8 23	9 17	8 14	20 32	8
23	b	10 kal̃	Seuerini epi	9 24	10 0	8 27	20 36	9
24	c	9 kal̃		10 25	10 13	9 10	20 40	10
25	d	8 kal̃	Crispini z Crispiniani	11 25	10 27	9 23	20 44	11
26	e	7 kal̃		12 26	11 10	10 6	20 48	13
27	f	6 kal̃	Vigilia	13 27	11 23	10 19	20 52	14
28	g	5 kal̃	Symonis z iude apłoz	14 27	0 6	11 3	20 56	13
29	A	4 kal̃		15 28	0 19	11 16	21 0	16
30	b	3 kal̃		16 29	1 2	11 29	21 4	17
31	c	2 kal̃		17 29	1 16	0 12	21 8	18

		1 4 7 5			1 4 9 4			1 5 1 3											
		Lon. Oppō.			Lon. Oppō.			Lon. Oppō.											
1	10	14	48	14	6	32	10	8	8										
2	18	22	9	3	14	10	18	23	8	14	7	15	18	21	13	14	3	11	
3	7	6	49				7	6	3	7	3	14	40				3	14	24
4				11	0	19	15	18	42	11	21	42	7	6	49				
5	15	7	23							19	14	2	15	13	44	11	22	40	
6				19	4	47	4	10	16				4	23	57	19	6	26	
7	4	2	17	8	23	39				8	7	13				8	18	24	
8	12	20	28				12	4	36				12	13	38	7			
9				16	23	43				16	16	33	1	23	26	16	2	18	
10	1	16	17				1	11	46							5	20	16	
11	9	23	52	5	8	17	9	23	20	5	6	1	9	16	19				
12				13	15	46				13	15	17				13	15	54	
13	17	9	5				17	6	52	2	22	47	17	7	49	2	23	23	
14	6	22	27	2	3	3	6	15	23				6	14	50				
15				10	18	35				10	8	44				10	6	25	
16	14	7	50				14	15	24				14	3	0	18	22	13	
17				18	4	46				18	12	44	3	18	23				
18	3	1	2	7	20	24	3	10	17							7	15	14	
19	11	14	48							7	7	40							
20				15	9	3	11	4	35	15	8	18	11	12	36				
21	19	0	31	4	16	2	19	0	58	4	17	0	19	20	7	15	0	47	
22	8	7	54				8	8	38				8	7	56	7	4	14	27
23				12	0	21	16	17	34	12	0	4	16	15	37	12	0	32	7
24	16	2	55	1	23	38				1	11	40	5	23	58	1	7	29	
25	5	20	55				5	7	4							9	17	12	
26				9	18	25				9	2	42	13	23	27				
27							13	15	52							17	20	45	
28	13	5	0	7	23	35				17	12	54	2	18	15				
29	2	17	13	6	10	27	2	9	13							6	15	52	
30				14	17	4	10	23	15	6	4	45	10	12	42				

KL**November****Solis****Lune****Ascendēs.**

			g̃ m̃	ḡ	ḡ	ḡ	ḡ	ḡ	ḡ			
1	D		Omniū sanctorū	18	30	1	29	0	25	21	12	b 19
2	e	4 noñ	Comemoratio aiaz	19	31	2	12	1	8	21	16	21
3	f	3 noñ		20	32	2	25	1	21	21	20	32
4	g	2 noñ		21	33	3	8	2	4	21	24	23
5	H	Noñ		22	34	3	22	2	17	21	28	25
6	b	8 id̃	Leonardi cōfessoris	23	35	4	5	3	0	21	32	26
7	c	7 id̃		24	36	4	18	3	13	21	37	27
8	d	6 id̃	Quattuor coronatorū	25	37	3	5	3	26	21	41	28
9	e	5 id̃		26	38	5	14	4	9	21	45	30
10	f	4 id̃	Martini pape	27	39	5	27	4	22	21	49	1
11	g	3 id̃	Martini episcopi	28	40	6	11	5	5	21	53	2
12	H	2 id̃		29	41	6	24	5	19	21	57	4
13	b	Idus	Bricij ep̃i	0	42	7	7	6	2	22	1	5
14	c	18 kal̃	Decembrie	1	44	7	20	6	15	22	5	7
15	d	17 kal̃		2	45	8	3	6	28	22	10	8
16	e	16 kal̃		3	46	8	16	7	11	22	14	10
17	f	15 kal̃		4	48	9	0	7	24	22	18	11
18	g	14 kal̃		5	49	9	13	8	7	22	22	13
19	H	13 kal̃	Elizabeth vidue	6	50	9	26	8	20	22	26	15
20	b	12 kal̃		7	51	10	9	9	3	22	30	17
21	c	11 kal̃		8	52	10	22	9	16	22	35	19
22	d	10 kal̃	Lecilie virginis	9	54	11	6	9	29	22	39	20
23	e	9 kal̃	Clementis pape	10	55	11	19	10	12	22	43	22
24	f	8 kal̃	Chrysogoni martyris	11	56	0	2	10	25	22	47	24
25	g	7 kal̃	Catherine virginis	12	57	0	15	11	8	22	51	26
26	H	6 kal̃	Lini pape	13	59	0	28	11	21	22	55	28
27	b	5 kal̃		15	0	1	11	0	5	22	59	30
28	c	4 kal̃		16	1	1	25	0	18	23	3	X 1
29	d	3 kal̃	Vigilia	17	2	2	8	1	1	23	8	3
30	e	2 kal̃	Andree apostoli	18	4	2	21	1	14	23	12	5

1 4 7 5

1 4 9 4

1 5 1 3

	1 4 7 5			1 4 9 4			1 5 1 3												
	Con.			Oppō.			Con.			Oppō.									
1	10	2	18				14	17	49			14	16	51					
2	18	9	22	3	2	25	18	9	17			18	9	37					
3	7	20	22	11	15	25	7	16	36	3	0	48	7	17	24	3	1	46	
4							15	11	6	11	8	55				11	8	51	
5	15	2	36							19	7	44	15	2	4	19	20	4	
6	4	21	11	19	0	4	4	4	55				4	14	57				
7				8	17	41	12	23	55	8	2	27				8	10	54	
8	12	13	17										12	7	32	16	21	1	
9				16	11	21				16	8	2	1	17	27				
10	1	3	5	5	18	32	1	1	49	5	18	44				5	7	3	6
11	9	10	3				9	10	57				9	7	43				
12	17	23	51	13	5	7	17	18	2	13	1	46	17	18	8	13	2	3	9
13				2	19	31				2	10	59				2	9	3	7
14	6	16	3				6	4	51	10	23	36	6	1	23	10	17	3	9
15				10	13	10							14	19	19				
16	14	2	8	18	21	57	14	10	40							18	15	5	0
17	3	16	46							18	8	10	3	13	1				
18				7	10	45	3	5	15	7	1	56	7			7	10	3	1
19	11	3	48	15	19	17	11	21	42	15	20	7							
20	10	10	59				19	11	55				11	8	0	15	16	3	1
21	8	19	57	4	3	8	8	18	52	4	3	24	19	10	26				
22				12	13	38				12	10	33	8	19	43	4	3	2	5
23	16	21	24				16	8	14				16	2	45	21	11	2	8
24				1	18	47				1	3	48	5	15	18	1	19	3	4
25	5	16	23				5	0	11	9	21	15				9	7	5	8
26				9	13	39							13	18	43				
27	13	19	37				13	10	21							17	16	1	5
28				17	12	50				17	6	16	2	13	29				
29	2	5	15	6	21	8	2	1	16	6	19	18				6	10	8	
30	10	12	38	14	4	54	10	12	27				10	6	1				
31	18	22	23	3	16	49	18	19	43	14	4	6	18	20	40	14	4	5	2

KL

December

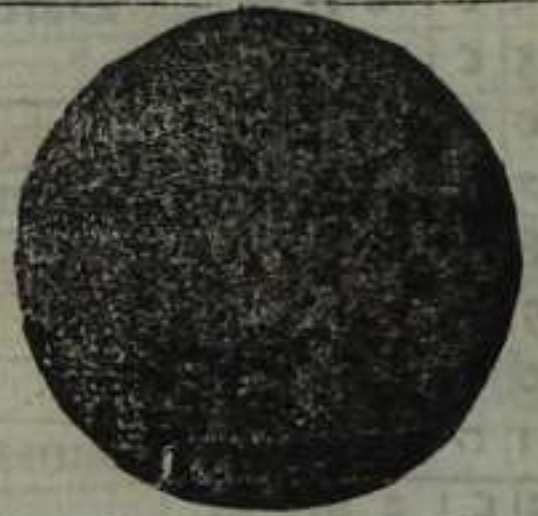
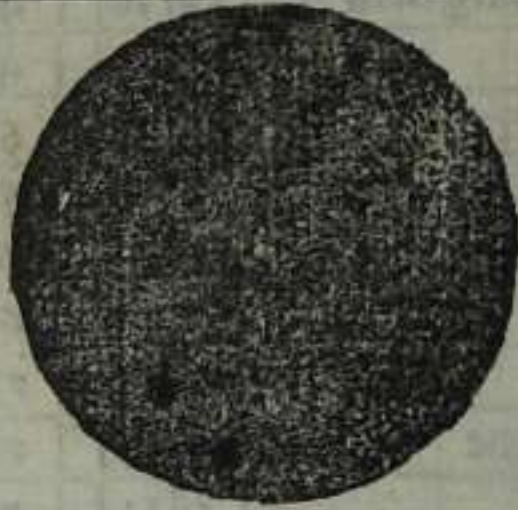
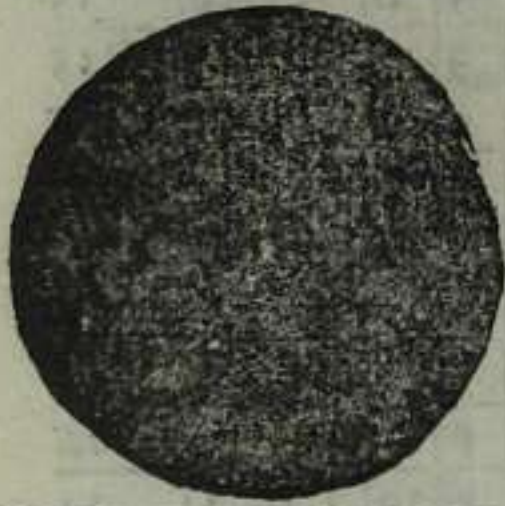
Solis

Lune

Ascendēs.

			q̄ m̄	q̄ q̄	q̄ q̄	h̄ m̄	q̄	
1	f		19 5	3 4	1 27	23 16	7	
2	g	4 non̄	20 7	3 17	2 10	23 20	9	
3	H	3 non̄	21 8	4 0	2 23	23 24	11	
4	b	2 non̄	Barbare virginis	22 10	4 14	3 6	23 28	13
5	c	Non̄		23 11	4 27	3 19	23 32	15
6	d	8 id̄	Nicholai ep̄i	24 12	5 10	4 2	23 36	16
7	e	7 id̄	Octava sci Andree	25 14	5 23	4 15	23 41	18
8	f	6 id̄	Conceptio marie	26 15	6 6	4 28	23 45	20
9	g	5 id̄		27 17	6 20	5 11	23 49	22
10	H	4 id̄		28 18	7 3	5 24	23 53	24
11	b	3 id̄	Damasi pape	29 20	7 16	6 7	23 57	26
12	c	2 id̄		3 0 21	7 29	6 20	0 1	21
13	d	Idus	Lucie virginis	1 23	8 12	7 4	0 5	30
14	e	19 kal̄	Januarij. Nicasij ep̄i	2 24	8 25	7 17	0 9	v 2
15	f	18 kal̄		3 27	9 9	8 0	0 14	4
16	g	17 kal̄		4 28	9 22	8 13	0 18	6
17	H	16 kal̄	Ignacij ep̄i	5 29	10 5	8 26	0 22	8
18	b	15 kal̄		6 30	10 18	9 9	0 26	10
19	c	14 kal̄		7 32	11 1	9 22	0 30	13
20	d	13 kal̄	Vigilia	8 33	11 14	10 5	0 34	15
21	e	12 kal̄	Thome apostoli	9 35	11 28	10 18	0 39	17
22	f	11 kal̄		10 36	0 11	11 1	0 43	19
23	g	10 kal̄		11 38	0 24	11 14	0 47	21
24	H	9 kal̄	Vigilia	12 39	1 7	11 27	0 51	22
25	b	8 kal̄	Natalis domini	13 40	1 20	0 10	0 55	25
26	c	7 kal̄	Stephani p̄thomartyri	14 42	2 4	0 23	1 0	26
27	d	6 kal̄	Johannis euangeliste	15 43	2 17	1 6	1 4	28
28	e	5 kal̄	Innocentium	16 45	3 0	1 20	1 8	30
29	f	4 kal̄	Thome episcopi	17 46	3 13	2 3	1 12	8 1
30	g	3 kal̄		18 47	3 26	2 16	1 16	3
31	H	2 kal̄	Siluestri pape	19 49	4 9	2 29	1 2	6

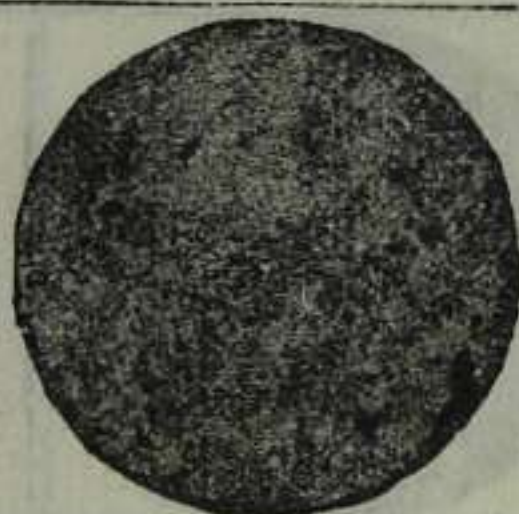
1 4 8 3	1 4 8 3	1 4 8 5
Eclypsis lune	Eclypsis lune	Eclypsis Solis
22 10 31	15 14 38	16 4 35
Aprilis	Octobris	Martij
Dimidia duratio	Dimidia duratio	Dimidia duratio
1 47	1 51	1 0



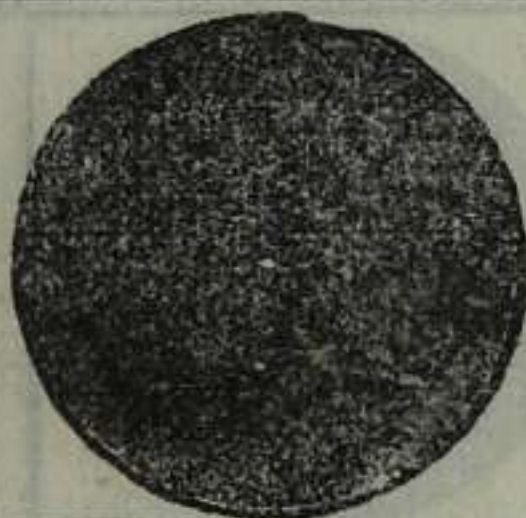
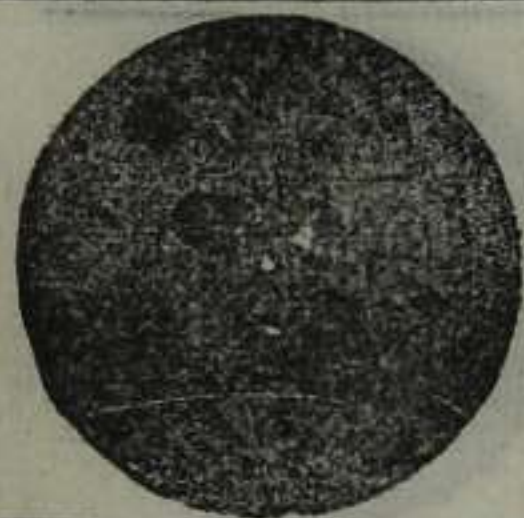
1 4 8 6	1 4 8 6	1 4 8 7
Eclypsis lune	Eclypsis Solis	Eclypsis lune
18 5 41	5 17 43	7 15 49
Februarij	Martij	Februarij
Dimidia duratio	Dimidia duratio	Dimidia duratio
1 47	1 0	1 46
	Puncta nouem	



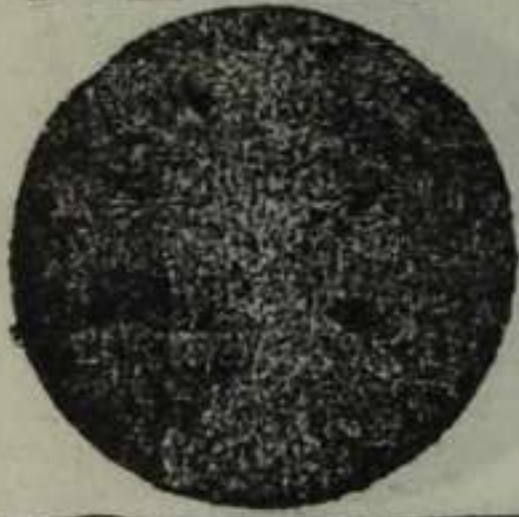
1487	1488	1489
Eclypsis Solis	Eclypsis Solis	Eclypsis lune
20 2 6	8 17 30	7 17 41
Julij	Julij	Decembzis
Dimidia duratio	Dimidia duratio	Dimidia duratio
0 51	0 41	1 45
Puncta septem	Puncta quattuor	



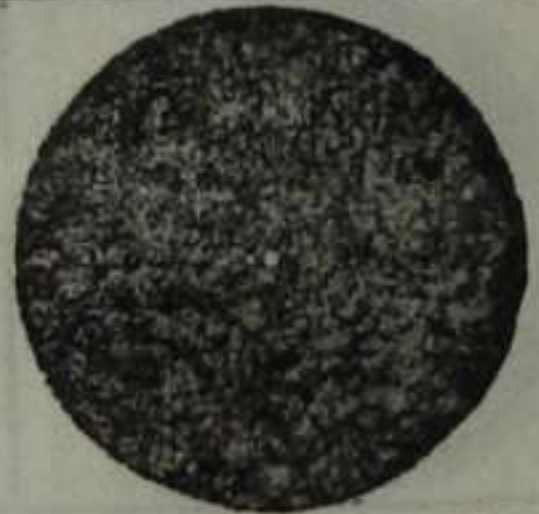
1490	1490	1491
Eclypsis lune	Eclypsis lune	Eclypsis Solis
2 10 6	26 18 25	8 3 18
Junij	Novembzis	Maij
Dimidia duratio	Dimidia duratio	Dimidia duratio
1 55	1 47	1 5
		Puncta nouem



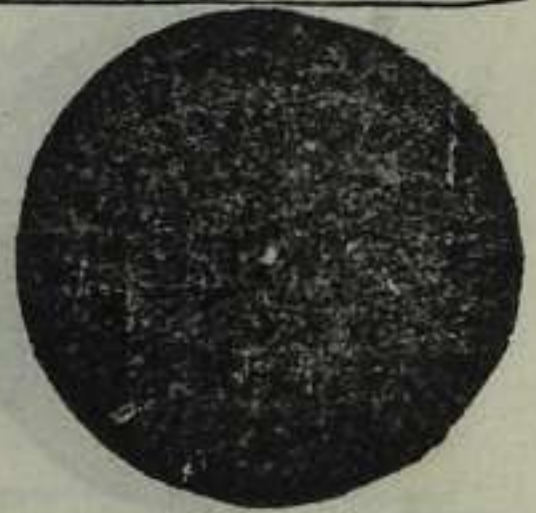
1493	1493	1494
Eclypsis lune	Eclypsis Solis	Eclypsis Solis
1 13 58	10 2 38	7 4 12
Aprilis	Octobris	Martij
Dimidia duratio	Dimidia duratio	Dimidia duratio
1 49	1 4	0 44
	Puncta octo	Puncta quattuor



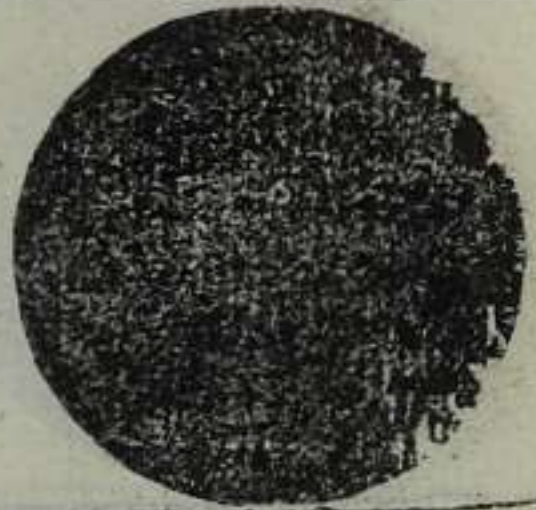
1494	1494	1497
Eclypsis lune	Eclypsis lune	Eclypsis lune
21 14 38	14 19 45	18 6 38
Martij	Septembriis	Januarij
Dimidia duratio	Dimidia duratio	Dimidia duratio
1 46	1 48	1 46



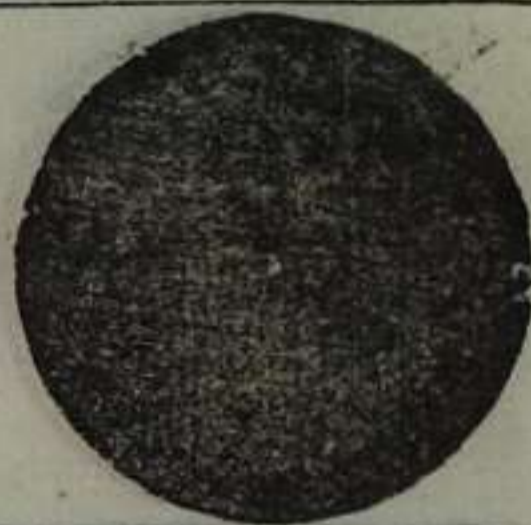
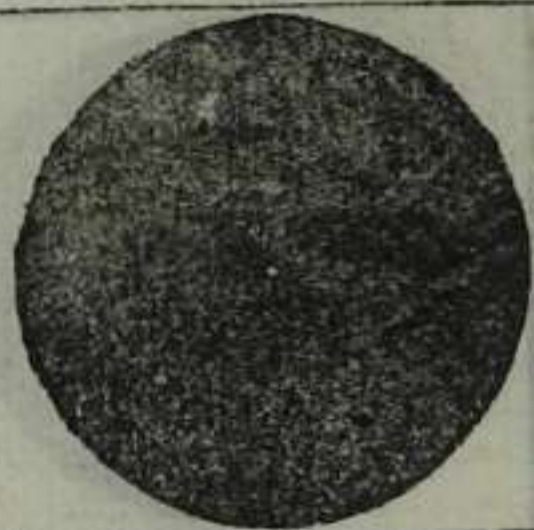
1497	1500	1501
Eclypsis Solis	Eclypsis lune	Eclypsis lune
29 3 2	5 14 2	2 17 49
Julij	Novembzis	Maij
Dimidia duratio	Dimidia duratio	Dimidia duratio
0 36	1 37	1 52
Puncta tria	Puncta decem	



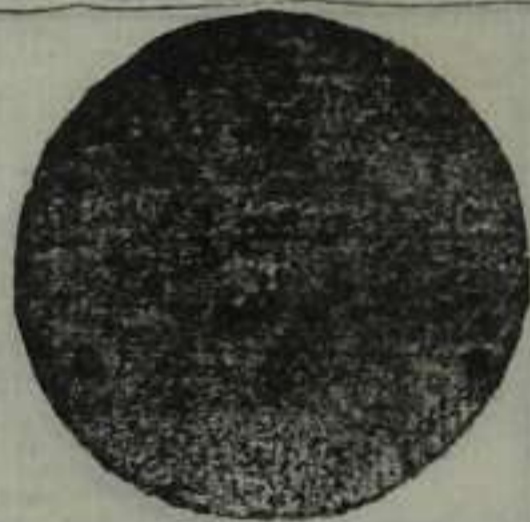
1502	1502	1504
Eclypsis Solis	Eclypsis lune	Eclypsis lune
30 19 45	15 12 20	29 13 36
Septembzis	Octobzis	Februarij
Dimidia duratio	Dimidia duratio	Dimidia duratio
1 7	1 1	1 46
Puncta decem	Puncta tria	



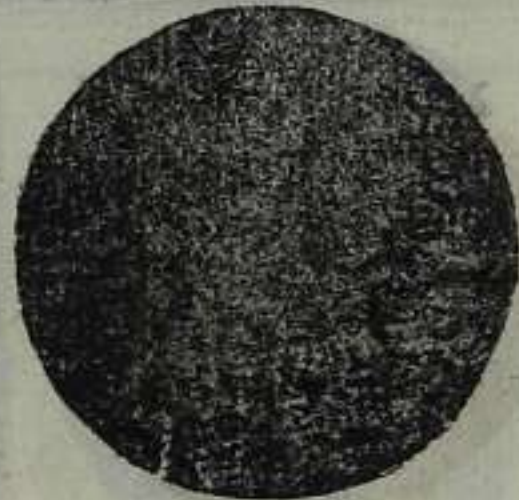
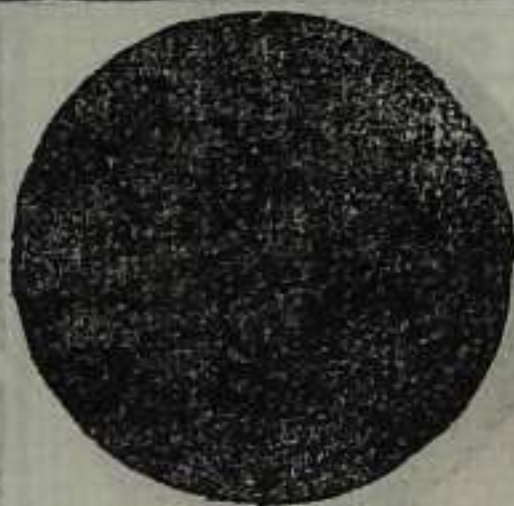
1505	1506	1508
Eclypsis lune	Eclypsis Solis	Eclypsis lune
14 8 18	20 3 11	12 17 22
Augusti	Julij	Junij
Dimidia duratio	Dimidia duratio	Dimidia duratio
1 43	0 29	1 53
	Puncta duo	



1509	1511	1513
Eclypsis lune	Eclypsis lune	Eclypsis Solis
2 11 11	6 11 52	7 1 33
Junij	Octobris	Martij
Dimidia duratio	Dimidia duratio	Dimidia duratio
1 26	1 40	0 59
Puncta septem		Puncta septem



1515	1516	1516
Eclypsis lune	Eclypsis lune	Eclypsis lune
29 15 20	19 6 0	13 11 39
Januarij	Januarij	Julij
Dimidia duratio	Dimidia duratio	Dimidia duratio
1 47	1 45	1 42



1516	1518	1518
Eclypsis Solis	Eclypsis lune	Eclypsis Solis
23 3 59	24 11 22	7 17 54
Decembrijs	Maij	Junij
Dimidia duratio	Dimidia duratio	Dimidia duratio
0 40	1 34	1 6
Puncta tria	Puncta nouem	Puncta vndecim



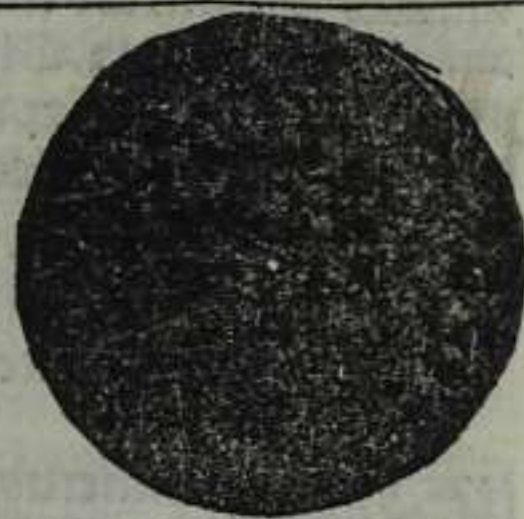
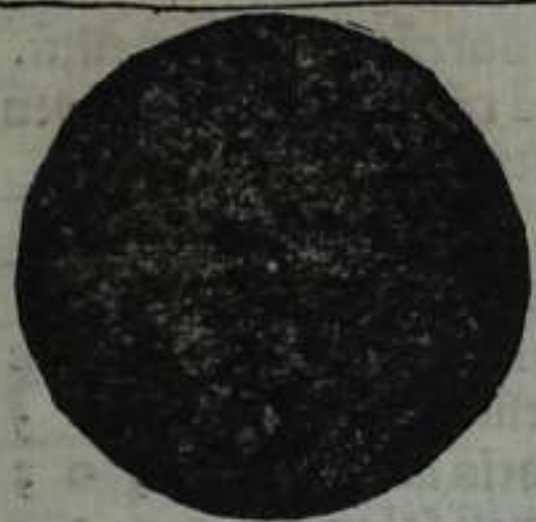
1519	1519	1520
Eclypsis Solis	Eclypsis lune	Eclypsis Solis
23 4 37	6 6 26	11 5 26
Octobris	Novembzris	Octobzris
Dimidia duratio	Dimidia duratio	Dimidia duratio
0 58	1 50	0 47
Puncta sex		Puncta tria



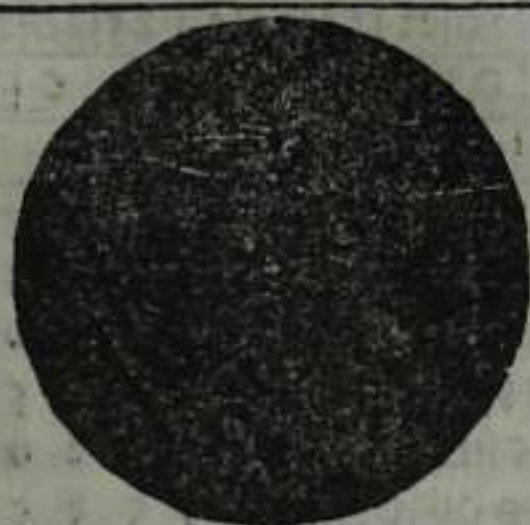
1520	1522	1523
Eclypsis lune	Eclypsis lune	Eclypsis lune
25 16 57	5 12 17	1 8 30
Octobzris	Septembzris	Martij
Dimidia duratio	Dimidia duratio	Dimidia duratio
1 2	1 44	1 48
Puncta tria		



1 5 2 3	1 5 2 5	1 5 2 5
Eclypsis lune	Eclypsis lune	Eclypsis lune
25 15 16	4 10 12	29 10 8
Augusti	Julij	Decembzris
Dimidia duratio	Dimidia duratio	Dimidia duratio
1 47	0 50	1 44
	Puncta duo	



1 5 2 6	1 5 2 7	1 5 3 0
Eclypsis lune	Eclypsis lune	Eclypsis lune
18 10 31	7 10 45	7 12 12
Decembzris	Decembzris	Octobris
Dimidia duratio	Dimidia duratio	Dimidia duratio
1 48	0 58	1 50
	Puncta tria	



De aureo numero.



Aureū numerū cuiusuis anni sic iuenies. Uide quot^o fit ann^o pposit^o a pmo āno christi dñi: quē numerū si offendes in tabella bic apposita aure^o numer^o est. 13. Si non: numero primo minori illic expresso da. 13. sequēti. 14. et itez succedēti. 15. sicq; de

13	14	15	16	17	18	19	1	2	3	4	5	6	7	8	9	10	11	12
14	33	22	11	30	19	38	26	15	34	23	12	31	20	39	28	17	36	25

De cyclo solari et littera dñicali.



Numerus cycli solaris simili cōputo deprehēditur p suā tabellā bic positā. Nā si numerus anni ppositi script^o est in ea tabella: cycli solaris numer^o est. 28. Si nō est illic expressus: da primo minori ibidem scripto 28. sequēti. 1. ac rursus succedenti. 2. sicq; deinceps quēadmodū de aureo numero p̄cipiebāt donec ad annum

28	1	2	3	4	5	6	7	8	9	10	11	12	13	14	15	16	17	18	19	20	21	22	23	24	25	26	27
A	g	e	d	c	b	g	f	e	d	b	A	g	f	d	c	b	A	f	e	d	c	A	g	f	e	c	b
f			A			c			e			g			b			d									

De inditione.



Ordo ut breuiter res vulgatas pcurram^o haud dissimiliter colligetur numer^o cycli inditionalis assumpta p̄senti tabella annorū xpi dñi

8	9	10	11	12	13	14	15	1	2	3	4	5	6	7
---	---	----	----	----	----	----	----	---	---	---	---	---	---	---

inceps donec pducere ad numerum anni ppositi: hoc ē singulis annis singulos aureos nūeros ac cōmoda incipiēdo ab anno q̄ apparet in tabella: et a. 13. pmo scz in serie aurei numeri subscripta. Nā ubi ann^o tu^o sedē inueniet illic habebis aureū numerū questū. Sub quo etiā cōtinuo clavis festozū mobiliū cōmunis apparebit.

ppositū puenies. Nā ubi talis ānoꝝ supputatio desinet: illic i serie cycli solaris subscripta numerū cycli solaris questū agnosces. Sub eo aut numero cycli solaris continuo habebis litterā dñicalē anni tui: que si vnica occurrat: annū eē cōmunē intelliges: si duplex bissextilē. P̄rior id est superior ad festū vsq; Matthe apli vtilis erit Inferior autē ad reliquā anni partē accōmodabitur.

quoz vnusquisq; habet. S. id est: cycli inditionalis octauus est Ceteri autē anni in tabella nō apparētes fm inditionis seriem hic subiunctā distributi suos quicq; numeros inuenient.

De Interuallo ⁊ festis mobilibus.

Interuallum carnis priuiale festaq; mobilia q̄ libet anno sic facile dignosces. Animaduerte aureū numerū āni propositi in primo ordine tabule festozū mobilium. sub quo in sequenti ordine videlicet litterarū dñicalium accipe litteram dñicalez anni tui proximo occurrentē: que erit index omnium p̄ banc tabulā p̄missozū. Nam in versu qui ab ea littera dñicali dextrosūm porrigit primo videbis interuallum: id est tempus a natali saluatoris nostri ad dñicam q̄ cantatur: *Esto mihi.* deinde diem septuagesime ⁊ cetera quecūq; fronti tabule inscripta sunt. Sed interuallum duos habet ordines: quozū prior docet hebdomadas integras. posterior aut cōcurrentes si qui anno quopiam fuerint. id est dies septenario pauciores qui septemanis integris adnumerant quos quidē accedē oportet quotiens natalis Christi dñi preter diē dominicā agit. Itaq; interualluz carnis priuiale semp duozū annoz pars est: appellationē sumens a posteriori: qm̄ in eo finem habet: quous concurrentes sint āni prioris. dies scilicet a natali ad dominicā primo sequentē qm̄ natalis ipse alia q̄ dominica die peragitur. Quāobrem recte precipit̄ in anno bissextili quum duplex sit littera dñicalis hebdomadas quidē integras per posteriorē: concurrentes v̄o per priorē queri debē. Nectemere iussimus sub aureo numero litterā dñicalem in suo ordine accipi. Nam si aliquando lra dñicalis e directo aurei numeri appa-

reat: ea nō erit cōueniens nūcia festozū mobilium. sed ad sequentem proximo descendendū est. Sic enī: qd̄ patribus placuit: nunq; pascalis celebritas cum hebraica coincidet obstinatione modo pascalis computus rite tractet̄. ¶ Est ⁊ alia via inueniendi quinq; festa mobilia quozū clauēs in calendario posite sunt ad hunc modum. Quot sunt vnitates in clauē festozū mobilium cōmuni superius p̄ aureū numerum innuente: tot dies computa in calendario a loco clauis cuiuscūq; festi mobilis. Postremus enī dies vocatur terminus festi questi. Ipsum autē festum peragi solet dñica die que primo succedit. Verū i anno bissextili cautelis quibusdā opus est. Tunc enī nō solū concurrentes sed ⁊ septuagesima ac quadragesima p̄ priorē litteram dominicā accipi debent. reliqua v̄o oia p̄ posteriorē. Attamen quadragesima retrahēda erit p̄ diem vnū si iuxta hāc cautelā ad vigesimā quartam diem Februarij aut post eam peruenerit. Qd̄ si p̄ clauem libeat inuestigare memorata festa: clauis ipsi addēda ē vnitas quotiens in anno bissextili septuagesima aut quadragesima querit̄ retracta itē quadragesima p̄ vnū diem si in vigesima quarta Februarij aut post eam inuenta fuerit.

Sequit̄ tabula festozū mobilium.

Marcus numerus	Littera dominical	Intervallū ad Eflo	Concurrentes	Jan. Septuagesima	Feb. Quadragesima	Martij. Pasca	April. Rogatiōes	Maij Pentecostes	Junij Corpis xpi	Deb. a pē. ad. io. ba.	Dies superflui.	Deb. a pē. ad adu. d.	Novēbr. Aduēt. d.	Deb. ab adu. ad na.	Dies superflui.
16	d	5	3	18	8	22	26	10	21	6	3	29	29	3	5
5	e	5	4	19	9	23	27	11	22	6	2	29	30	3	4
13	f	5	5	20	10	24	28	12	23	6	1	29	1	3	3
2	g	5	6	21	11	25	29	13	24	6	0	29	2	3	2
	H	6	0	22	12	26	30	14	25	5	6	29	3	3	1
10	b	6	1	23	13	27	1	15	26	5	5	28	27	4	0
	c	6	2	24	14	28	2	16	27	5	4	28	28	3	6
18	d	6	3	25	15	29	3	17	28	5	3	28	29	3	5
7	e	6	4	26	16	30	4	18	29	5	2	28	30	3	4
	f	6	5	27	17	31	5	19	30	5	1	28	1	3	3
15	g	6	6	28	18		6	20	31	5	0	28	2	3	2
4	H	7	0	29	19	2	7	21		4	6	28	3	3	1
	b	7	1	30	20	3	8	22	2	4	5	27	27	4	0
12	c	7	2	31	21	4	9	23	3	4	4	27	28	3	6
1	d	7	3	1	22	5	10	24	4	4	3	27	29	3	5
	e	7	4	2	23	6	11	25	5	4	2	27	30	3	4
9	f	7	5	3	24	7	12	26	6	4	1	27	1	3	3
	g	7	6	4	25	8	13	27	7	4	0	27	2	3	2
17	H	8	0	5	26	9	14	28	8	3	6	27	3	3	1
6	b	8	1	6	27	10	15	29	9	3	5	26	27	4	0
	c	8	2	7	28	11	16	30	10	3	4	26	28	3	6
14	d	8	3	8	29	12	17	31	11	3	3	26	29	3	5
3	e	8	4	9	2	13	18	1	12	3	2	26	30	3	4
	f	8	5	10	3	14	19	2	13	3	1	26	1	3	3
11	g	8	6	11	4	15	20	3	14	3	0	26	2	3	2
	H	9	0	12	5	16	21	4	15	2	6	26	3	3	1
19	b	9	1	13	6	17	22	5	16	2	5	25	27	4	0
8	c	9	2	14	7	18	23	6	17	2	4	25	28	3	6
	d	9	3	15	8	19	24	7	18	2	3	25	29	3	5
	e	9	4	16	9	20	25	8	19	2	2	25	30	3	4
	f	9	5	17	10	21	26	9	20	2	1	25	1	3	3
	g	9	6	18	11	22	27	10	21	2	0	25	2	3	2
	H	10	0	19	12	23	28	11	22	1	6	25	3	3	1
	b	10	1	20	13	24	29	12	23	1	5	24	27	4	0
	c	10	2	21	14	25	30	13	24	1	4	24	28	3	6

De coniunctionibus ac
oppositionib⁹ luminariū.



Conjunctiones atq; op-
positiones luminariū
vere haud difficulter de-
prehendēt p̄ambulis
quibusdā pri⁹ expositis.
Unusq; igit̄ duodeci-
mensū anni duas habet partes aut fa-
cies: quarū dextra quidē ad calenda-
rium attinet. Eius prim⁹ ordo habet
numerum dierū mensis cuiuslibet qui
3 1. usq; supat. Sequēs ordo septenis
constat litteris: quarū quelibet ad cer-
tam septimane diem refetur. 2 que ad
dñicā spectat diem lra dñicalis vulgo
nuncupāt. Succedunt itē triplices nu-
meri nonarū: iduū: atq; calendarum.
Cuiuslibet nempe mensis dies tripha-
riam distinguūt: in calendas videlicet
nonas 2 idus: ita ut primi singulorum
mensū dies calende nūcupent: sequē-
tibus quaternis aut senis qñq; diebus
qui dicunt̄ none. itē ottonis in quoli-
bet mense idib⁹. dies autē reliq; oēs ca-
lende numerate vocant̄: numeris tam
earū q̄ p̄cedentiū appellatiōnū conti-
nue decrecentib⁹. Quāuis autē calen-
de initiales none itē atq; idus a mēse
in quo scribunt̄ denotiatiōnē sumant:
calende tñ numerate ad sequentē refe-
runt̄ menses: quāobrem 2 iuxta supre-
mam earū nomē mēsis succedētis ad-
notat̄. Deinde occurrūt noīa scōz quo-
rundā quib⁹ dies mensiū dicatī sunt.
Postremo loco sunt tres colūnule nu-
merozū binis distincte lineis: quarum
prima est Solis veluti inscriptio ad-
monet: cui⁹ priores quidē numeri gra-
dus integros veri motus solis: poste-

riores autē minutias graduū continē
Suntq; gradus illi atq; minutie ei⁹ si-
gni quod proxime supra scribit̄. Reli-
quas duas colūnulas luna sibi vendi-
cat: quarum vtracq; duplices habet nu-
meros: priorib⁹ quidem signa: postero-
ribus aut gradus significantibus. Si-
nistra deniq; facies post numerū die-
rum attramēto scriptum sex habet co-
lumnas quinq; vacuis interstitijs sepa-
ratas: quarū vnaqueq; triplici nume-
rozum constat ordine non quidē con-
tinue vbiq; sed saltim nōnunq; succe-
dentium. Primus ordo habet aureū
numerū rubro scriptum: secundus ho-
ras: tertius minuta horarū cōmplecti-
tur. De colonne tribus cyclis decēno-
ualibus accōmodant̄: quozum videli-
cet quivis decēnouem annos cōtinet.
Primus initium sumit ab āno chrisli
domini. 1475. secūdus ab anno. 1494
2 tertius anno. 1513. quos etiam an-
nos numeri sui supra binas colūnas
positi representant. Horum autem cy-
clorū cuilibet due ex predictis sex co-
lumnis adaptant̄. Prior cuiuslibet cy-
cli columna coniunctionibus: poste-
rior autē oppositionib⁹ luminariū ve-
ris inseruit veluti inscriptiōes que sūt
in capitibus columnarū admonent.

¶ Quando itaq; libet scire tempus cō-
iunctionis vere luminariū mense quo-
piam vsuali: quere aureum numerum
anni p̄positi in columna coniunctio-
nū cycli currentis (currentez vocamus
in quo annus p̄positus cōtinetur) 2
e directo ipsius a dextris quidem vide-
bis horas 2 minutias si que sint. a fini-
stris autem in extremo ordine nume-
rum diei a cuius meridie computare
debent hore cuz minutijs pri⁹ accepte

quibus exactis fit talis cōiunctio. Quid si velis diē huiusmodi insigni quadam appellatiōe pronunciare quere numerū eius i primo ordine calendarij. Iuxta enī apparebit quota fit septimane dies aut cui celebritati dicata vicina ve sit. Nō aliter inuenies tempus oppositionis vere si aureū numerum in colūna oppositionuz animaduertas. Sed hec quidē simpliciter accipienda sunt si cuti monuim⁹ si a minutis. Nō prominet gnomuncul⁹ aliqs: id est signuz quoddā huiusmodi, 7 J. siue sursū vergat siue deorsū. Nā si tale signū apparuerit in interstitio columnarum: hore dudū accepte ad aliuz diē trabunt eū scz iuxta quē definit huiuscemodi gnomuncul⁹. Verbi gratia: cōiunctio que in tertio cyclo notat iuxta vigesimā secundā Januarij diē ad vigesimā primā eiusdē attinet: hoc est: hore. 15. cum minutis. 18. nō a meridie vigesime secundē diei quā indicat aure⁹ numer⁹. 17 sed a meridie vigesime prime sunt numerande: qm̄ gnomuncul⁹ sursū porrectus illic definit. Sic oppositio secundī cycli q̄ iuxta nonā diē Septembr̄ scribit ad octauam reuertet. 7 que iuxta octauā ponit ad septimā reduci debet. Pari rōne oppositio tertij cycli q̄ 5. 23 diē Nouemb̄ris statuit ad. 25. eiusdē spectat gnomunculo illic ad tertiū descendere versū. Itē cōiunctio p̄mi cycli iuxta tertiā decēbris diē apparens ad secundā eiusdem. 7 que secundē diei adscribit ad primā attinet gnomunculis illic duobus quēadmodū in Septēbri coherentib⁹. Sic autē numer⁹ quosdā alienis sistere sedib⁹ ratio opificij cogebat. Verū oēm hanc supputationez horarū cū minutis suis ad meridianū

oppidi Nurembergensis referri voluimus q̄ locus ille dignus videbat quē nouo litterarū genere celebrazemus. Hoc etiā accedēte q̄ in ea habitatiōe nostra p̄sens opusculum condidimus. Nec tamē idcirco alios quosuis locos vsu calendarij nostri fraudauimus. s. d ipsū quasi mun⁹ cōe toti ferme europe impartiam⁹. Preposita regionū tabula que docet quantū quouis alius loc⁹ numeris scriptis addē debeat aut detrabere. Namq̄ in ea post ordinē provinciarū ac ciuitatuz insigniorū ad sinistra eunti mox alterutra l̄ra p. m. 7. a occurrit. m. qdē significans q̄ numer⁹ sequēs minui debet a tpe p aureū numerū super⁹ accepto. a. vō q̄ talis numerus addi debet siue habeat horam aliquā cū minutis: siue t̄mmodo minuta. Prior enim ordo colūnule litteras m. 7. a. sequentis horariā habet inscriptionē. posterior autē minutias exhibet. Facta igitur additione aut minutione put nota occurrens admonet: habebit temp⁹ coniunctionis aut oppositionis vere ad locū ppositum ac si ois supputatio ad meridianuz eiusdē loci directa foret. Scribere autē oia loca q̄ n̄ra tempestate habitant imensuz erat quocirca paucas insigniores habitations exarauimus: que vō in vicinis singularū iacent ad scriptas tanq̄ primarias reducēt: pauxillo quoq̄ iam in interuallo nullaz differentiam notatu dignā importate. Porro ut sit vniuersum hui⁹ tabule tenorē interpretemur postremus ordo simplex ostēdit quot gradibus polus mundi Aquiloni⁹ supra Horizontē cuiusuis loci adnotat; extollit. Is autē numer⁹ quēadmodū vsu veniat inferius aperiet.

De eclipſibus luminariū.



Eclipſis ſolis aut lūe oī
eo anno futura eſt cui⁹
numerus a p̄mo anno
chriſti domini coeptus
in capite cuiuſplam co
lumne eclipſalis appa
ret. Tempus autē eclipſis numero ſuc
cedenti deprehendit̄ tribus conſtante
particulis ſeparatim ſcriptis: quarum
prima diem menſis qui mox etiā ſub
iungit̄ oſtendit. ſecunda horas. tertia
minutias: quibus a meridie talis diei
computatis medium eclipſis euenit.
Sequit̄ dimidia duratio q̄ duplici ple
rūq; cōſtat numero hore videlicet vni⁹
ac minutoꝝ: nōnunq; vō minutis dun
taxat contenta eſt. Vocamus autē di
midiam durationē id temp⁹ quod eſt
ab initio eclipſis vſq; ad mediuz eius
aut ab eo medio vſq; ad finem. Qua
propter ſi talis dimidia duratio a me
dio eclipſis dematur: reſtabit initium
eclipſis: eademq; ad medium eclipſis
appoſita finem eclipſis cōmonſtrabit
Poſtremo ſiqua eclipſis particularis
fuerit pūcta eius adnotant̄: id eſt quot
duodecime ex diametro luminaris de
ficientis occultabunt̄. Que res etiā fi
guratiōe haud incōmoda representaſt
Nam quanta pars circuli luminare ſi
gnificantis atramento tincta eſt: tan
tam ex ſupficie ipſius lumiaris nobis
obuerſa defecturam eſſe pronūciabis
ſitu etiā deficientis partis innotescen
te. Inferior q̄ppe luminaris pars defi
ciet ſi inferior pars circuli nigella ſit. ſu
perior autem ſi ſuperior circuli portio
atra fuerit. Eclipſi vō vniuerſalem cir

culus oīno niger ſignificat. Sz huc q̄z
ſpectat tabula regionuz ſi aliubi q̄z in
oppido Nurebergenſi degas. Quam ū
enim ſuperius addidiſti tempoꝝi con
iunctionis ul' oppoſitiōis vere aut ab
eo detraxiſti: tantuz hic quoq; ad me
diū eclipſis adde aut ex eo minue put
nota. a. uel. m. in tabula regionum ap
parens admonet.

De loco ſolis v̄ero.



Erum ſolis locum hoc
pacto cognosces Intra
tabulā ſolis ſubſcriptaz
cum numero anni p̄o
poſiti: ⁊ quod iuxta eū
apparebit adde ei nu
mero qui ſcribit̄ in colūnula ſolis ad
diem propoſitam: p̄iorē videlicet nu
merum p̄iori: ⁊ poſteriozem qui ē mi
nutoꝝum poſteriori. At ſi ſūma minu
toꝝum vltra. 60. euaserit: p̄o. 60. abla
tis adde gradum vnum: reliquis in lo
co ſuo dimiſſis. Verū i anno cōmuni
poſt diez ſancti Matthei apoſtoli vſq;
ad finem anni facta additiōe huiusce
modi demendus eſt gradus vnus. Qd̄
enim relinquetur oſtendet verū locuz
ſolis in gradibus ⁊ minutis ad meri
diem diei propoſite. Quantū autē ad
di ul' minui oporteat propter meridia
noꝝum differentiā: quoniaz illud per
exiguū eſt conſulto preterimus.

Tabula Solis.

Anni	g	m	Anni	g	m	Anni	g	m	Anni	g	m
1475	0	16	1490	0	38	1505	1	0	1520	0	21
1476	0	2	1491	0	23	1506	0	45	1521	1	7
1477	0	28	1492	0	9	1507	0	30	1522	0	52
1478	0	33	1493	0	55	1508	0	16	1523	0	37
1479	0	18	1494	0	40	1509	1	2	1524	0	23
1480	0	3	1495	0	25	1510	0	47	1525	1	9
1481	0	49	1496	0	11	1511	0	32	1526	0	54
1482	0	34	1497	0	57	1512	0	18	1527	0	39
1483	0	19	1498	0	42	1513	1	4	1528	0	25
1484	0	5	1499	0	27	1514	0	49	1529	1	11
1485	0	51	1500	0	12	1515	0	34	1530	0	56
1486	0	36	1501	0	58	1516	0	20	1531	0	41
1487	0	21	1502	0	43	1517	1	6	1532	0	27
1488	0	7	1503	0	28	1518	0	51	1533	1	13
1489	0	53	1504	0	14	1519	0	36	1534	0	58

De loco lune vero.

Locus lune verus facile deprehendet si pri^o instrumenti lunaris partes dignoscet. Est itaq; in eo instrumēto çodiacus duodecim signorū suis caracterib^o distinctor. Signa trigenos habent grad^o. hic autē vrgente loci angustia, vnūquodq; spaciolum duas representat gradus. Intra çodiacum ē equator lune numeros ab vno ad sex vltro citroq; gestas. Ad sūt etiā due rotule mobiles duobus numeris lunaribus i calendario positis respōdentes: duobusq; qui i tabula radicū lune iuxta numeros annorū scribunt quorū prior signa: posterior autē gra-

das representat. His cognitis statuēde sunt radices lune at semel inuente p totum quēuis annū i promptu sint. Intra itaq; tabulā radicū lune cū numero āni ppositi: z numerū lune priorē qui signis z gradibus constat cōputa in çodiaco ab ariete vbi crux est incipiendo: ita ut aries habeat. 1. taurus. 2. gemini. 3. z sic deinceps. vbi autē numerus ille desinet pone filū instrumenti. rotulamq; maiorem volue do nec caput eius. id est crux sub filo iaceat. z ita manentē rotulā fige intrinsecus cum cera. talis enī erit situs eius p totū annū. Siliter posteriori numero fm signa çodiaci computato: filoq; ad finez talis numeri tracto volue

rotulā minorē donec caput eius filo occultet: i eoq; fitu fige rotulā ut p totū ānū illic māeat. Quotiēs itaq; locū lune i zodiaco scire cupis nūmēz lune priorē q in calendario ad diez ppositā scriptū ē cōputa a capite maioris rotule. ad finēq; ei⁹ pone filiū instrumenti. mox enī sub ipso filo habebit i zodiaco loc⁹ lune medi⁹. Unde r⁹ ver⁹ cōtinuo emerget si numerū lune posteriorē i calēdario positū cōpu

taueris a capite minoris rotule. nā sub filo ad exitū talis nūeri translato in eq̄toze lune offerent grad⁹ addēdi ad mediū lune locū supra inuētur si i inferiori semicirculo eq̄tozis accipiant. aut minuendi ab eodē si in superiori. Semicirculos autē noto eos q iuxta arietē ac libzā incipiūt desinūtq;. Verū in āno bissextili a festo s̄cti Mathie apli vsq; ad exituz anni vtriq; numero lunari grad⁹ 13. supaddi oportebit.

Tabula radicum lune

Anni	ḡ	ḡ	ḡ	ḡ	Anni	ḡ	ḡ	ḡ	ḡ	Anni	ḡ	ḡ	ḡ	ḡ	Anni	ḡ	ḡ	ḡ	ḡ
1475	6	23	2	1	1490	1	7	0	3	1505	7	20	10	6	1520	1	20	7	26
1478	11	2	4	29	1491	5	16	3	2	1506	11	29	1	5	1521	6	13	11	8
1476	3	25	8	11	1492	9	25	6	1	1407	4	9	4	4	1522	10	22	2	7
1478	8	4	11	10	1493	2	18	9	13	1508	8	18	7	3	1523	3	2	5	6
1479	0	14	2	9	1494	6	27	0	11	1509	1	11	10	14	1524	7	11	8	4
1480	4	23	5	7	1495	11	7	3	10	1510	5	20	1	13	1525	0	4	11	16
1481	9	16	8	19	1496	3	16	7	9	1511	10	0	4	12	1526	4	13	2	15
1482	1	25	11	18	1497	8	9	9	21	1512	2	9	7	11	1527	8	22	5	14
1483	6	4	2	16	1498	0	18	0	19	1513	7	1	10	22	1528	1	2	8	12
1484	10	14	5	15	1499	4	27	3	18	1514	11	11	1	21	1529	5	24	11	24
1485	3	6	8	27	1500	9	7	6	17	1515	3	20	4	20	1530	10	4	2	23
1486	7	16	11	26	1501	1	29	9	29	1516	8	0	7	18	1531	2	13	5	22
1487	11	25	2	24	1502	6	9	0	27	1517	0	22	11	0	1532	6	22	8	20
1488	4	5	5	23	1503	10	18	3	26	1518	5	2	1	29	1533	11	15	0	2
1489	8	27	9	5	1504	2	27	6	25	1519	9	11	4	28	1534	3	24	3	1



Uoniā aut nōnulli q̄ritant tpa incisioni venarum apta: habetq; luna plurimū potestatis in ea re alijs atq; alijs recepta signis: non absentaneū v. deī hic atterere generales quasdā signozū pprietates: quibusq; partibus humani corpis singula ac cōmodari soleant: ut q̄uis breui ac crasso quodā argumēto signa apta in eptaq; internoscant. Pleniorē nanq; hui⁹ rei tractatū alibi reddemus. Igit

aries ut phibent auctores calid⁹ & siccus est atq; igneus. caput hoīs totum sibi vendicans. aptus incisioni vene. Laur⁹ frigid⁹ ficc⁹ terreusq; ad colū spectat: inept⁹ sanguini fundendo. Gemini calidi humidī & aerei: humeros brachia manusq; tutātur inutilis venis aperiendis. Cancer frigidus humidus aqueus: pectori stomacho pulmoniq; accōmodat. varius in minutiōe sanguis. Leonē calidū & ficcū igneūq; eē phibēt: dorsū ac lassa respiciētē piculosū sanguini emittēdo

Uirginis signū frigidus siccū terreūq;
 ad ventrē ac intestina spectat: indiffe-
 rens vene secande. Libra calida hu-
 mida aerea: umbilicū lumbos inferio-
 raq; vētris sortitur: utilis sanguini mi-
 nuendo. Scorpio frigidus humidus
 aquaticusq; pudenda gubernat: incer-
 tus ad venam incidendam. Sagi-
 ctario calido sicco et igneo: core adscri-
 bunr. utili ad incisionem vene. La-
 puzicornus frigidus siccus ac terreus: ha-
 bet genua: ad sanguinis autem minu-
 tionē inutilis existit. Aquarius cali-
 dus humidus et aereus: ad crura referē
 indifferens vene incidende. Pisces
 quoq; indifferentes sūt frigidi humidi
 et aquatici: pedesq; in tutelā recipiunt.

Illud autē non est obliuioni preter-
 eundū qd et si luna in signo quopiā fue-
 rit ad minutionez sanguinis electo nō
 tamen attingi debet pars corporis ei-
 dem signo allegata. Preterea iuuetu-
 ti quidē luna crescēs: senibus autem
 decrescens eligi consuevit.

De magnitudine diei.



Ad quantitatem diei vbi
 vis agnoscedā propria
 exposita ē tabula: i cuius
 fronte numeri quidam
 statuūt elevationē poli
 borealis significantes.

in laterib⁹ aut extremis signa zodiaci
 cū ternis gradibus suis adiacēt. Illic
 ergo ad quāuis diē accipe signū et gra-
 dum solis. Nā e directo ipsius sub nu-
 mero elevationis polaris apparebit
 quantitas tēporis semidiurni i horis
 et minutis suis si sol in aliquo signozū
 borealiū fuerit: aut quantitas tēpis se-
 minocturni si in australi quopiā exti-
 terit: qd tempus seminocturnuz ex. i z:
 horis ablatū relinquit quantitātē tēpis
 semidiurni. Ea autē quātitate duplica-
 ta totū tempus diurnū conflabit. Quū
 aut dies cū nocte sua simul viginti q̄t-
 tuoz horis consistit: si quantitātē diei
 ex viginti q̄tuoz horis demas quanti-
 tas noctis relinquet. Qd si grad⁹ solis
 nō appareat in alterutro extremoz or-
 dinū: considerabis duos iuxta eū vici-
 niores. Nam penes sitū eius ad illos
 proportionaliter coniectabis quanti-
 tatē tēpis semidiurni mediam quodaz
 modo inter duas quantitates dierum
 duobus illis vicinioribus gradib⁹ re-
 spondētes. Porro semidiurni tēporis
 quātitas indicat qua hora sol occidit
 sicut et seminocturnum tempus ortum
 solis declarat. Ut autē signoz caracte-
 res agnosces hic apposita est tabella
 ostendens etiam que borealia queve
 australia nuncupentur.

Borealia		Australia	
♈	Aries	♎	Libra
♉	Taurus	♏	Scorpio
♊	Gemini	♐	Sagittarius
♌	Lancer	♑	Capricornus
♍	Leo	♒	Aquarius
♎	Virgo	♓	Pisces

Tabula quantitatis dierum.

	36	37	38	39	40	41	42	43	44	45	
6	h m	h m	h m	h m	h m	h m	h m	h m	h m	h m	6
27	6 0	6 0	6 0	6 0	6 0	6 0	6 0	6 0	6 0	6 0	30
3	6 3	6 4	6 4	6 4	6 4	6 4	6 4	6 4	6 5	6 5	27
6	6 7	6 7	6 8	6 8	6 8	6 8	6 9	6 9	6 9	6 10	24
9	6 10	6 11	6 11	6 12	6 12	6 12	6 13	6 13	6 14	6 14	21
12	6 14	6 14	6 15	6 15	6 16	6 17	6 17	6 18	6 18	6 19	18
15	6 17	6 18	6 19	6 19	6 20	6 21	6 21	6 22	6 23	6 24	15
18	6 21	6 22	6 22	6 23	6 24	6 25	6 26	6 27	6 27	6 19	12
21	6 24	6 25	6 26	6 27	6 28	6 29	6 30	6 31	6 32	6 33	9
24	6 27	6 28	6 30	6 31	6 32	6 33	6 34	6 35	6 36	6 38	6
27	6 31	6 32	6 33	6 34	6 36	6 7	6 38	6 40	6 41	6 43	3
m 8	6 34	6 35	6 37	6 38	6 39	6 41	6 42	6 44	6 45	6 47	mp
3	6 37	6 39	6 40	6 41	6 43	6 45	6 46	6 48	6 50	6 51	27
6	6 40	6 42	6 43	6 45	6 47	6 48	6 50	6 52	6 54	6 56	24
9	6 43	6 45	6 47	6 48	6 51	6 52	6 54	6 56	6 58	7 0	31
12	6 46	6 48	6 50	6 52	6 54	6 56	6 58	7 0	7 2	7 4	18
15	6 49	6 51	6 53	6 55	6 58	6 59	7 1	7 4	7 6	7 8	15
18	6 52	6 54	6 56	6 58	7 0	7 3	7 5	7 7	7 10	7 12	12
21	6 55	6 57	6 59	7 1	7 3	7 6	7 8	7 11	7 13	7 16	9
24	6 57	7 0	7 2	7 4	7 6	7 9	7 11	7 14	7 17	7 20	6
27	7 0	7 2	7 4	7 7	7 9	7 12	7 15	7 17	7 20	7 23	3
7 II	7 2	7 4	7 7	7 9	7 12	7 15	7 17	7 20	7 23	7 26	8
3	7 4	7 7	7 9	7 12	7 14	7 17	7 20	7 23	7 26	7 29	27
6	7 6	7 9	7 11	7 14	7 17	7 19	7 25	7 26	7 29	7 32	24
9	7 8	7 10	7 13	7 16	7 19	7 22	7 25	7 28	7 31	7 35	21
12	7 9	7 12	7 15	7 17	7 20	7 23	7 27	7 30	7 33	7 37	18
15	7 11	7 13	7 16	7 19	7 22	7 25	7 28	7 32	7 35	7 39	15
18	7 12	7 14	7 17	7 20	7 23	7 26	7 30	7 33	7 37	7 40	12
21	7 13	7 15	7 18	7 21	7 24	7 27	7 31	7 34	7 38	7 42	9
24	7 13	7 16	7 19	7 22	7 25	7 28	7 32	7 35	7 39	7 42	6
27	7 14	7 16	7 19	7 22	7 25	7 29	7 32	7 35	7 39	7 43	3
30	7 14	7 17	7 19	7 22	7 26	7 30	7 32	7 36	7 39	7 43	9

Tabula quantitatis dierum.

	46	47	48	49	50	51	52	53	54	55	
♁	♁	♁	♁	♁	♁	♁	♁	♁	♁	♁	♁
♁	6 0	6 0	6 0	6 0	6 0	6 0	6 0	6 0	6 0	6 0	30
3	6 5	6 5	6 5	6 6	6 6	6 6	6 6	6 6	6 7	6 7	27
6	6 10	6 10	6 11	6 11	6 11	6 12	6 12	6 13	6 13	6 14	24
9	6 15	6 15	6 16	6 16	6 17	6 18	6 18	6 19	6 20	6 20	21
12	6 20	6 20	6 21	6 22	6 23	6 24	6 24	6 25	6 26	6 27	18
15	6 25	6 26	6 26	6 27	6 28	6 29	6 31	6 32	6 33	6 34	15
18	6 30	6 31	6 32	6 33	6 34	6 35	6 37	6 38	6 39	6 41	12
21	6 34	6 36	6 37	6 38	6 40	6 41	6 43	6 44	6 46	6 48	9
24	6 39	6 41	6 42	6 44	6 45	6 47	6 49	6 50	6 52	6 54	6
27	6 44	6 46	6 47	6 49	6 51	6 53	6 55	6 57	6 5	7 1	3
♁	6 49	6 50	6 52	6 54	6 56	6 58	7 0	7 3	7 50	7 8	♁
3	6 53	6 55	6 57	6 59	7 1	7 4	7 6	7 9	7 11	7 14	27
6	6 57	7 0	7 2	7 4	7 7	7 9	7 12	7 15	7 17	7 21	24
9	7 2	7 5	7 7	7 9	7 12	7 15	7 17	7 20	7 24	7 27	21
13	7 7	7 9	7 12	7 15	7 17	7 20	7 23	7 26	7 30	7 33	18
15	7 11	7 13	7 17	7 19	7 22	7 25	7 28	7 32	7 35	7 39	15
18	7 15	7 18	7 21	7 24	7 27	7 30	7 34	7 37	7 41	7 45	12
21	7 19	7 22	7 25	7 28	7 31	7 35	7 39	7 42	7 47	7 51	9
24	7 23	7 26	7 29	7 32	7 36	7 39	7 43	7 48	7 52	7 56	6
27	7 26	7 29	7 33	7 36	7 40	7 44	7 48	7 52	7 57	8 2	3
♁	7 30	7 33	7 36	7 40	7 44	7 48	7 52	7 57	7 2	8 7	♁
3	7 33	7 36	7 40	7 44	7 48	7 52	7 56	8 1	8 6	8 12	27
6	7 36	7 39	7 43	7 47	7 51	7 56	8 0	8 5	8 10	8 16	24
9	7 38	7 42	7 46	7 50	7 54	7 59	8 4	8 9	8 14	8 20	21
12	7 40	7 44	7 48	7 53	7 57	8 2	8 7	8 12	8 17	8 23	18
15	7 42	7 46	7 50	7 55	7 59	8 4	8 9	8 15	8 20	8 26	15
18	7 44	7 48	7 52	7 57	8 1	8 6	8 11	8 17	8 23	8 29	12
21	7 45	7 49	7 54	7 58	8 3	8 8	8 13	8 19	8 25	8 31	9
24	7 46	7 50	7 55	7 59	8 4	8 9	8 14	8 20	8 26	8 32	6
27	7 47	7 51	7 56	8 0	8 4	8 10	8 15	8 21	8 27	8 33	3
30	7 47	7 51	7 56	8 0	8 5	8 10	8 15	8 22	8 27	8 34	♁

De horologio horizontali.



Horologiū horiçõtale i
quavis habitatiõe hoc
modo conficiet. Disten
sis pedib⁹ circini ad la
rus quadrantis horolo
gij horiçontalis in pla
nitie quadã circulū describe: cui⁹ dia
metro designata alterū semicirculozū
spacijs horarijs designandis accõmo
da. Eius itaq; semicirculi arcū diuide
p mediuz. ⁊ a puncto medie incisionis
ad centrū circuli duc lineaz rectã: que
erit hore duodecime: diameter autem
circuli dudum lineata duplici hore se
xte videlic; antemeridiane ⁊ postme
ridiane inseruiet. Que res ut de initi⁹
exponi possit: arcum semicirculi oppo
ne pectori tuo ita ut linea hore duode
cime aduersus te porrigatur. Sic ergo
diameter circuli in duas semidia
metros resoluta: dextra quidem semidia
meter horã sextã ante meridianã rep
sentabit. sinistra aut sextã p⁹ meridia
nam. Reliquas aut horaz lineas hoc
pacto inscribes. Pone filū quadrãtis
ad scalam latitudinū ⁊ moue indicem
id est nodulum filo adberentē ad ele
uationē poli in scala signatã. Deinde
translato indice ad lineaz hore prime
habebis in arcu quadrantis extremo
inter filuz extensū ⁊ latus sinistrū qua
drantis distantiam vnius hore a meri
die: quam distantia circino acceptam
traduc ad semicirculū horologij futu
ri figendo scilicet alterū pedem circini
in extremo puncto linee hore duode
cime. alterius autē circumducti vtrinç

uestigium nota in arcu semicircull.
duoq; puncta sic facta cum centro ho
rologij continua p duas rectas: quaz
dextra quidē vndecimã horam signifi
cabit: sinistra autē primam post meri
diem. Rursus pone indicem ad lineaz
hore secunde: ⁊ habebis distantia dua
rum horarū a meridie inter filū exten
sum latusq; quadrantis. Hanc distan
tiam transfer sicut antea ad circūferen
tiam horologij. factisq; duobus pun
ctis. ac ipsis cum centro horologij co
pulatis: dextra quidem linea erit hore
decime: sinistra autem hore secunde.
Non aliter efficies reliqs horologij li
neas posito indice sup ceteras horarū
lineas in quadrante. Ad hunc modum
semicirculus horologij duodecim ho
rarum spacijs distinguit. Quum autē
dies estiuī pluribus q̄ duodenis con
sistent horis: reliquas horarū distãtias
hac via deprehēdes. Quanta est inter
capedo quinte ⁊ sexte horarū in circū
ferentia horologij: tantū officio circi
ni adiunge vtriq; hore sexte: factisq; p
pedem circini vaguz duobus punctis:
ac eis cum centro per lineas rectas co
pulatis: dextra quidem horam quintã
antemeridianam: sinistra v⁹ septimã
postmeridianã representabit. Itē sum
pta similiter intercapedine duarū ho
rarum quarte sexteq; ac ea vtrinç ad
horam sextã adiuncta: si ut prius duas
rectas duxeris: dextra quidem horam
quartam antemeridianã: sinistra octa
nam postmeridianam monstrabit. Ceterum descriptis iam lineis ho
rarijs pone filum quadrantis ad nu
merum eleuationis poli i habitatiõe

tua: qui p̄ tabulā regionuz deprehēdit̄
 mox enī apparebit angul⁹ quidaꝝ filo
 ipso ⁊ latere quadrantis graduato cō-
 tent⁹: cui equales fac ex tabula lignea:
 aut ex lamina ferrea: eūq; anguluz ad
 lineam hore duodecime sic applica ut
 cuspi eius cū centro horalogij cōue-
 niat. superficies autē anguli rectissime i-
 nitat̄ planitie horalogij neutrosū vi-
 delicet declinās. Poteris etiā si libeat
 ex centro horalogij educere filum fer-
 reum. fm quātitatē anguli memorati
 eritq; vsus ei⁹ idem cū vsu anguli: vtri-
 usq; vmbra horas indicante. Dacten⁹
 de fabrica. nūc de positione horalogij
 tractandum que haud cōmode sine li-
 nea meridiana comparat̄. Est autem
 vulgaris linee meridiane inuentio ad
 hunc fere modū. In plano ad equidi-
 stantiā horizontis posito describe cir-
 culū quātūlibet. in cui⁹ centro fige sti-
 lū teretē sicut cacumen eius quaquer-
 sū equaliter distet a circumferentia cir-
 culi. Ea auteꝝ longitudine sit stilus ut
 vmbra eius breuissima que fit i meri-
 die intra circulum terminet̄. Obserua
 itaq; duas stili vmbzas equales ante
 meridianā ⁊ post meridianā: quarum
 videlicet vtraq; ad circūferentiā circuli
 desinat: factisq; duobus punctis ad ter-
 minos vmbzaruz arcus interceptus p̄
 equa diuidat̄: punctasq; medie incisio-
 nis cum centro circuli copulet̄: q̄ quan-
 tūcunq; etiā vtrinq; extensa erit linea
 meridiana quam querebas. Cui iam
 sup̄imponē lineā hore duodecime ho-
 rologij: ita ut semicirculus horari⁹ ad
 septētriōes spectet. Sole itaq; radian-
 te vmbra anguli sup̄a memorati aut
 fili ferrei horas indicabit. Poteris autē

ex vna linea meridiana q̄ facillime i-
 numeras alias elicere. Nā in ipso pun-
 cto hore duodecime vbi cunq; ppendi-
 culum ex manu demiseris: si in vmbra
 fili duo pūcta vbilibet sumpta p̄ rectā
 copulaueris: ea noua erit linea meri-
 diana. Punctū autē hore duodecime
 minister tuus ad horologij adstans
 tibi q̄uis absentis pronunciabit.

De noticia horarū equinoctialiū.



Er quadratū horarium
 huic libello insertū ho-
 ras dierū in quauis ha-
 bitatione facile discer-
 nes si prius officia par-
 tiū instrumētū p̄sperer̄.

Est itaq; scala latitudinuz cancellatis
 strata lineis quarū que inuicē equidi-
 stant eleuationes poli definiūt: nume-
 ris suis ad dextram adnotatis: que vō
 ad angustiam descendūt quasi cōcur-
 sum petētes signa zodiaci denosq; eo-
 rum gradus distinguunt: litteris signo-
 rum initialibus opportune subnota-
 tis. Discretiōis autem gratia quelibet
 equidistantiū vocet̄ zodiacus habita-
 tionis: quoniā vnaqueq; earum in si-
 gna gradusq; secta est per lineas incli-
 natas deorsū venientes. Sub hac sca-
 la est numerus horarum duplex: ante
 meridianus quidem superior: postme-
 ridianus autem inferior: iuxta suam
 quisq; horariam lineā. Extreme autē
 linee videlicet hore duodecime adia-
 cet scala breuib⁹ quibusdam distincta
 spaciolis: quorū singula denos grad⁹
 representāt. Gradus inquam signorū
 que iuxta etiā litteris suis primarijs
 adscribuntur. Talem autem signoruz

graduūq; contextū haud iniuria ꝑodi-
 acum meridiei quispiā appellauerit.
 ꝑredictis lineis supincūbit brachio-
 lum quoddā mobile. ex cuius fine que
 vocet manus demissū est perpendicu-
 lū: cuiꝑ filo adberet nodulus quidam
 hozarū index. ꝑorro i suprema linea
 instrumenti aut e directo eius ad fini-
 stram figendus est aliqd qđ vmbzā ia-
 ciat soli oppositū: quale poterit eē gra-
 nū cereū uel nodulus aut aliqd huius-
 cemodi. In quacūq; igit̃ habitatione
 fueris diligent̃ animaduerte ꝑodiacuz
 tuū. nā in eo semp manꝑ predicta vltro
 citroq; decurret. Eā ergo manuz pone
 ad gradū solis in ꝑodiaco habitatiōis
 tue. filoq; ꝑpendiculi libere demissi ad
 graduz solis in ꝑodiaco meridiei apta-
 to transfer noduluz filo adberentē ad
 eundē solis gradū. Quibus sic disposi-
 tis finistrū instrumenti latꝑ oppone so-
 li radianti ita ut vmbza cerei grani ad
 supremā instrumenti lineā ꝑozrigatur
 Mox enim situs noduli inter lineas
 hozarias quesitā indicabit hozam.

De hozis temporalibus.



Hactenus omnē hozarū
 cōputū retulimꝑ ad me-
 ridianum: hoc est: uel a
 meridie uel a media no-
 cte initiuz supputatiōis
 fecimꝑ. Nam si libet ad
 hozicōntē referre (qm̃ plerisq; mos est
 ab occasu solis hozas cōputare: non-
 nulli etiam ab oriente sole hozis diur-
 nis initiū facere cōsueuerūt) ad occa-
 sum hoc modo reduces hozas a meri-
 die ceptas. Subtrabe tempꝑ semidiur-
 nū ex numero hozaruz a meridie inci-
 pientiuꝑ supadditis viginq̃ttuoz hozis
 si alias subtractio fieri nequeat. Si vō

a media nocte fuerint cōputate: deme
 semidiurnū duodecim hozis supaddi-
 tis. Sic enī relinquet̃ numerus hozarū
 a ꝑincipio noctis computandarum.
 Ad ortuz autē rediges hozas a medio
 noctis exorsas si ex eis tēpus semino-
 cturnū detraxeris cū suplemēto etiaz
 viginq̃ttuoz hozarū si aliogn detra-
 ctio fieri nō possit. A meridie vō inci-
 pientiuꝑ subtrabe seminocturnū duode-
 cim supadditis hozis. Et bactenꝑ qdez
 oia de hozis equinoctialibꝑ quas vul-
 go equales vocāt: accipienda sūt. Eas
 aut̃ facile cōuerteres in hozas tempales
 quez inequales hodie nuncupantur si
 vsū instrumenti ad hanc rem expositi
 addiscas. ꝑone igit̃ filuz instrumenti
 sup numerū tēporis semidiurni i lim-
 bo deꝑrehensū: ꝑmoue nodulum ad
 arcū hozē duodecime. Deinde transfer
 filū in eodem limbo ad hozas equino-
 ctiales ꝑpositas: sed a meridiano hac
 uel illac: id est: ad orientem versus uel
 occidentē ꝑut res admonet computa-
 tas. Mox enim inter arcus hozarios
 hozam temporalē nodulus indicabit
 Verū cū duplex illic numerorū series
 appareat: superior quidez ab. 1. ad. 6.
 antemeridianis hozis debet̃: inferior
 aut̃ a. 7. ad. 12. postmeridianis. Erant
 autē hozē tempales antemeridiane
 si equinoctiales antemeridiane fuerit
 ꝑ si has postmeridianas supposueris:
 ille quoq; postmeridiane erunt. Non
 aliter de hozis nocturnis te expedies
 si filo ad tempꝑ seminocturnum ꝑosito
 nodulū ut antea ad arcū hozē duode-
 cime ꝑduxeris: hozasq; equinoctiales ꝑ-
 positas a medio noctis hac ul̃ illac cō-
 putaueris. De sūt hozē qbꝑ ꝑrisci vte-
 banꝑ q dies quoscūq; ac etiam noctes

duodenis horis cōstituebāt. Sz z eas horas gubernamento luminariuz ac planetarū distribuebāt incipientes a prima hora diei saturni: quā saturno ipsi supremā obtinenti sedez dicauere secundā ioui. tertiam marti: z sic deinceps ordine seruato tā horarū q̄z planetarū. nocturnas etiā horas diurnis subiungentes: ita ut p̄cursis viginti quatuor horis: planetisq̄ quotiēs oportet repetitis vigesima hora: id ē prima postere diei quartū ex ordine planetā asciscat. Sic prima hora sequētis diei: id est dñice ad solē attinet. z que deinde succediūt ut prius planetis suis accōmodant̄. ¶ Sz ne in re p̄ualgata diē teramus: si libet scire cui planete debeat hora quelibet p̄posita: scias in primis cuius planete fit dies presens. Talē aut̄ planete habēt successionem per dies septenos: Saturn⁹ Sol Luna Mars Mercurius Iuppiter Venus. diem sabbati saturno assumente: ceterisq̄ dieb⁹ ad ceteros planetas ex ordine relatis. Quo cognito statue primaz horā diei in nota interiori primi articuli indicis: secundā in nota secūdi articuli: tertiam in nota tertij: quartā in cacumine indicis: quintā in nota exteriori tertij articuli: sextam in secundo septimā in primo articulo extrinsecus reliquas aut̄ horas si que sint: similiter ad articulos sequētiū digitorū adapta digitūq̄ qui horā p̄positā suscipit animaduerte. Nā si in primo articulo talis digitus intrinsec⁹ planetā diei fistes z sequentib⁹ articulis sequētes planetas addicabis donec ad sedē hore p̄posite venies: illic planetaz hore dñm deprehendes. Nec quāticūq̄ sint momenti adnotasse nō fuerit alienuz qm̄ quidē horarū tractatu ad hāc fere scri

ptionē adducti sum⁹ quous hoc quoq̄ simul innotescat cur septenis diebus a septenario planetarū numero appellationē mutantibus nō seruet̄ planetarum ordo qualis in celo est: sz a saturno verbi gratia ad solem a quo ad lunā: z ita deinceps binaria semp̄ intercalatione saltus fiat. Id enim vigene quaterne hore quibus singuli dies noctesq̄ constant facta p̄ eas planetarū distributione exigūt. Quippe hoc successu vigesime quinte hore: id est exordio postere diei quart⁹ a priori planeta duobus iam preteritis allegat̄.

De ascendente.



St colūnula i extremo faciei dextre calendarij nup̄ addita cui⁹ ē ascendēs inscriptio: trinis distincta numeris: habentibus. D. g. m̄. in fronte

In quavltimo numerorum in ordine oriens siue ascendens signū suusq̄ gradus sup̄ horizonta quibuscūq̄ diebus mensuraz in meridie deprehenditur. ex aduerso in celo occidens: Gradus e directo in solis colūnula medium celi: i eius aduersa parte angul⁹ terre: si recte ai aduerteris in celi circulo euidenter inueniunt̄. Quot autē horas uel post uel añ meridiē idē cupis scire: horas post meridianas p̄teritas addere antemeridianas futuras demere oportebit ex horis z minutis in suo ordine ad diez p̄positū positis. Si autē ex additiōe h⁹ cemodi hore. 24. superexrescerent. illas abijce. Uel si subtrahi neqrēt hor⁹ sup̄ addit⁹. 24. Numer⁹ ex alterutro restās horarū: ei i serie horarū z minutoz est quereud⁹ dñm: at vqi ille inuētus fuerit iuxta a dextris gradus ad horā p̄positā ostendit̄ gradus signi orientis.

Hic calendarij nri clauderemus vsuz nisi quorundam de celebritate paschali dubitatio succurreret: qua de re non nihil ex psenti opusculo colligi pot. Na quu diuino pcepto iustum sit pascha celebrari quartadecima die mensis primi. Primu aut mensis dicitur cuius initiu aut mediu in ipso egnocitio verno est: uel initiu vicinius eidem equinoctio: pspiciu est huius rei obseruatione e duobus pendere principis. egnocitio videlicet verno et nouilunio primo: quorum neutri stabilis perpetuo sedes concessa est in calendario romanensi quo ecclesia etiam xpiana vtitur. Quippe ratio supplementi bissextilis non recte quadrat quin: quatuor anni ecclesie paucillo quodam superent quatuor annos solares. Quo fieri oportet ut si hoc anno verbi gratia equinoctium vernalis fuerit ad vngue in meridie vndecime diei Martij quatuor annis vsualibus exactis egnocitium fite iam non erit in meridie vndecime diei sed tanto prius quantus est excessus quatuor annorum vsualium super quatuor annos solares. Veru huiusmodi anticipatio paucis quidem annis admodum parua existens multorum successu annorum paulatim sensibilis redditur adeo ut a tpe Dionysij abbatis cuius paschali computo adhuc vtimur: ad nostram vsque etatem memorata equinoctij vernalis anticipatio dies ferme decem complexa sit. Pari rone nouilunia quoque firmos in calendario locos habere nequeunt: quoniam septuagesimennis vsualibus annis lunationes singule ad senas prope horas anticipant. Quas ob res ut quibus breuissime

dicatur: quu his annis equinoctium vernalis fiat vndecima Martij quod tpe Dionysij fiebat vigesima prima eiusdem: si quod plenilunium in hoc decem dierum intervallo euenerit: id pro ecto paschale erit secundum institutionem primariam quibus computo Dionysij discrepate. Qui ergo sciunt egnocitium vernalis hoc nostro tpe ad vndecimam Martij fieri. sed nemo fere ignorat quu iam pridem diuisi Gregorij dies videlicet duodecima Martij eidem concessa sit egnocitio: qui denique in celo aut alias plenilunium agnoscunt: quod iam purgatum est: quod rursus diuini tenore precepti de celebritate paschali didicerunt: quod pene in ppatulo est popularibus: iam dudum lingua vernacula litteras legentibus sacrasque certe omnes mirari possunt cur indictum intervallo decem dierum plenilunio incidente non eo ipso aut saltem prima dominica sequenti paschale fiat sacrum: sed per mensem totum eo quocumque amplius ecclesia iubente differatur. Hinc quodam oriri solet questione de luna paschali quibus mota fuit Bessarioni cardinali dum legatum in Venetiam ageret. Quales etiam mihi a multis et quibusdam hebreis sepe numero obiectate sunt. Talis denique ambiguitas videtur quodam sacerdotibus verasse premisses ut paschalem diem agerent mense fere toto priusquam ecclesia vsus celebraret: durante idcirco in hodiernum vsque diem verbo in eos ludifico. Maxima autem ac nimis pudenda est contumelia quam nobis hebraica durities: fuisse istud peccatum inferre non erubescit: nunquam in nos cauillandi finem faciens: ut quod a se non minus sacre litterature parte mutuati sumus ne prima quidem diuine legis monimentum suare studeamus. sed vel ignorantiam nobis vel incostantiam impingens. Quamobrem ope precium est quosdam futuros proferre annos quibus vera paschalis

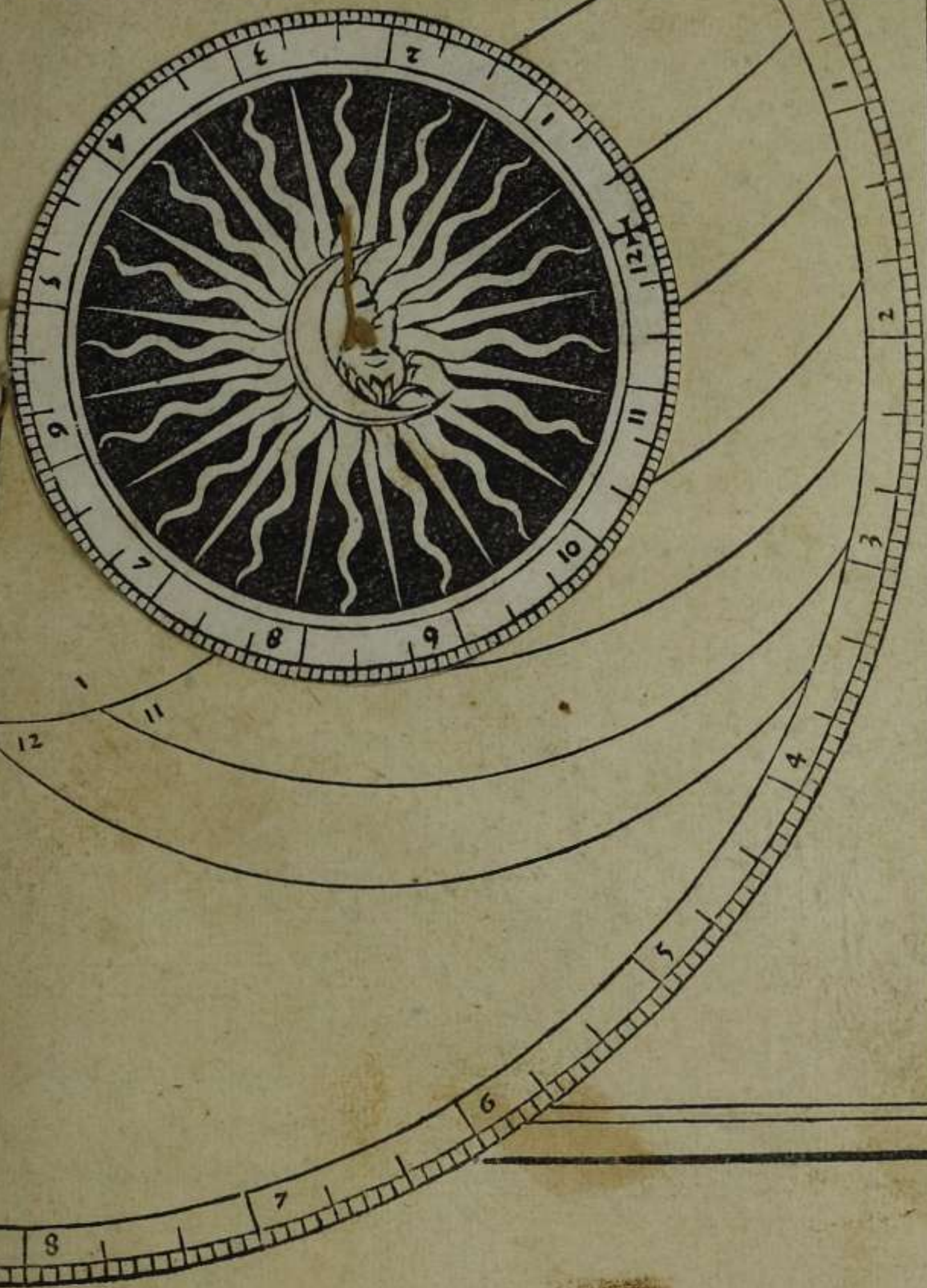
ratio discrepat a prisca illa supputa-
tione Dionysiaca quā adhuc ecclesia
vniuersalis p̄ auctoritate sua tolerat.
Hoc aut̄ prefabor nō animo reprehē-
dendi me id facturū: quā nō penes ar-
bitriū meū sita est huiuscemodi nego-

cij precipua tractatio: sed quo cautio-
res fiant nostri hoīes siquādo impia
quantis obiectatiōe verentur. Naud
enī facile ē tela reputeare improuisa.
Jam vō fas sit huiuscemodi discre-
pantiā tabulari numero cōmōstrare.

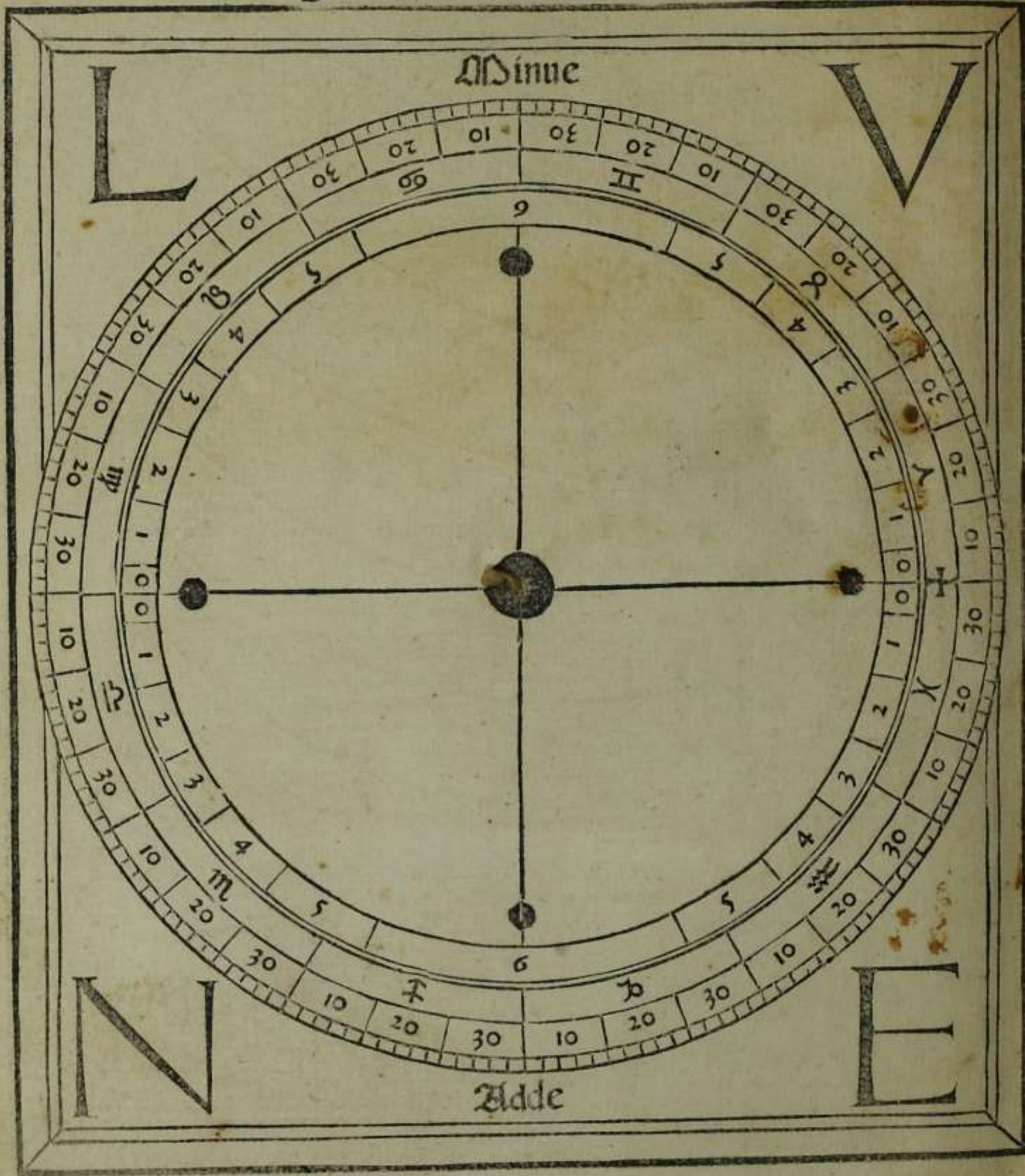
¶ Dies paschalis.

Anni Christi	Juxta vsum ecclesie	Juxta decre- ta patrum	Dñia
1477	6 Aprilis	30 Martij	7
1481	22 Aprilis	18 Martij	35
1484	18 Aprilis	14 Martij	35
1488	6 Aprilis	30 Martij	7
1489	19 Aprilis	22 Martij	28
1491	3 Aprilis	27 Martij	7
1492	22 Aprilis	18 Martij	35
1494	30 Martij	23 Martij	7
1495	19 Aprilis	12 Aprilis	7
1497	26 Martij	19 Martij	7
1498	15 Aprilis	8 Aprilis	7
1500	19 Aprilis	22 Martij	28
1501	11 Aprilis	4 Aprilis	7
1503	16 Aprilis	19 Martij	28
1504	7 Aprilis	31 Martij	7
1508	23 Aprilis	19 Martij	35
1511	20 Aprilis	16 Martij	35
1512	11 Aprilis	4 Aprilis	7
1514	16 Aprilis	9 Aprilis	7
1515	8 Aprilis	1 Aprilis	7
1518	4 Aprilis	28 Martij	7
1519	24 Aprilis	20 Martij	35
1521	31 Martij	24 Martij	7
1522	20 Aprilis	16 Martij	35
1524	27 Martij	20 Martij	7
1525	16 Aprilis	9 Aprilis	7
1527	21 Aprilis	24 Martij	28
1528	12 Aprilis	5 Aprilis	7
1530	17 Aprilis	10 Martij	28
1531	9 Aprilis	2 Aprilis	7

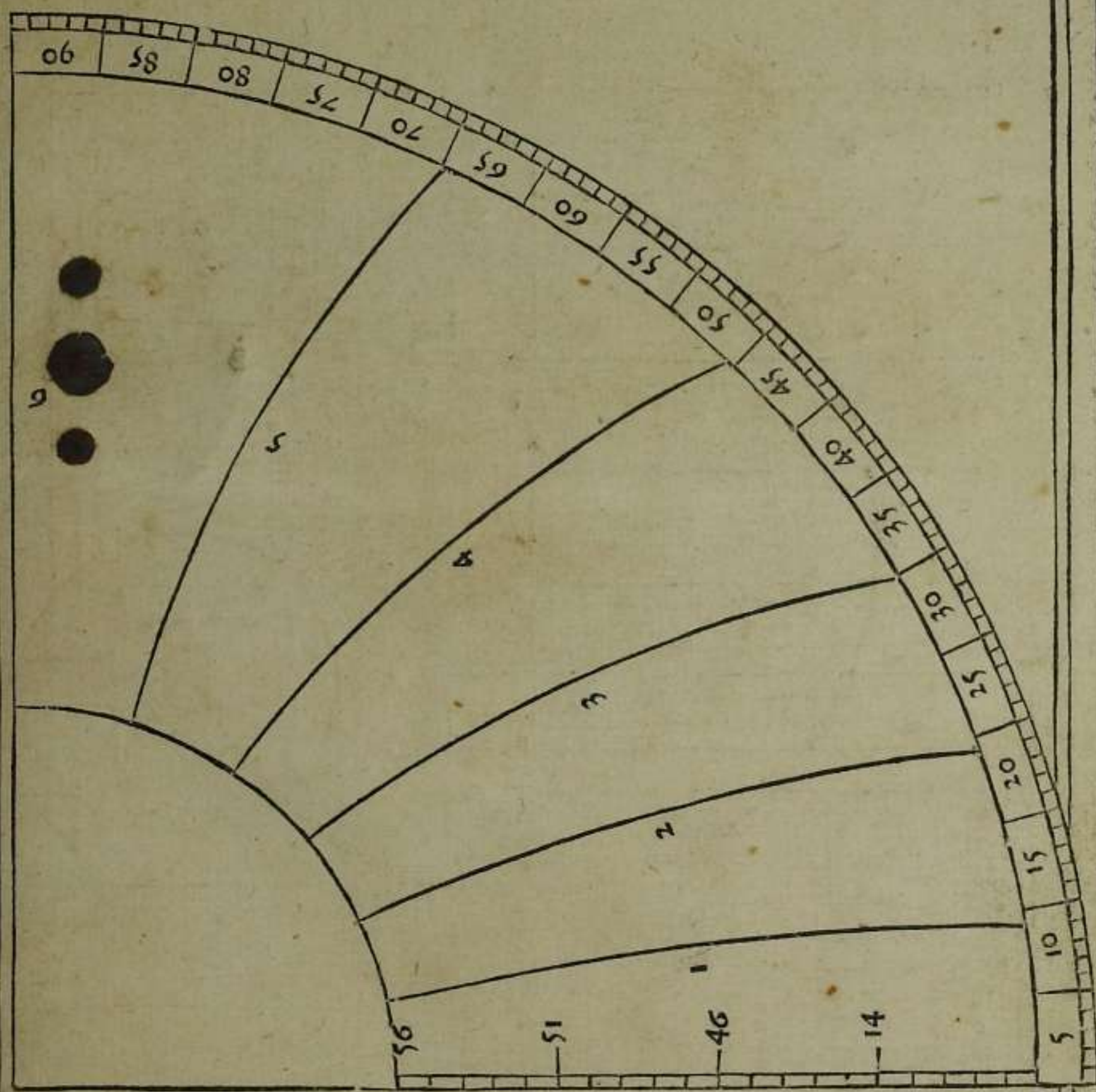
Instrumentum horarū inequalium



Instrumentū veri motus lune



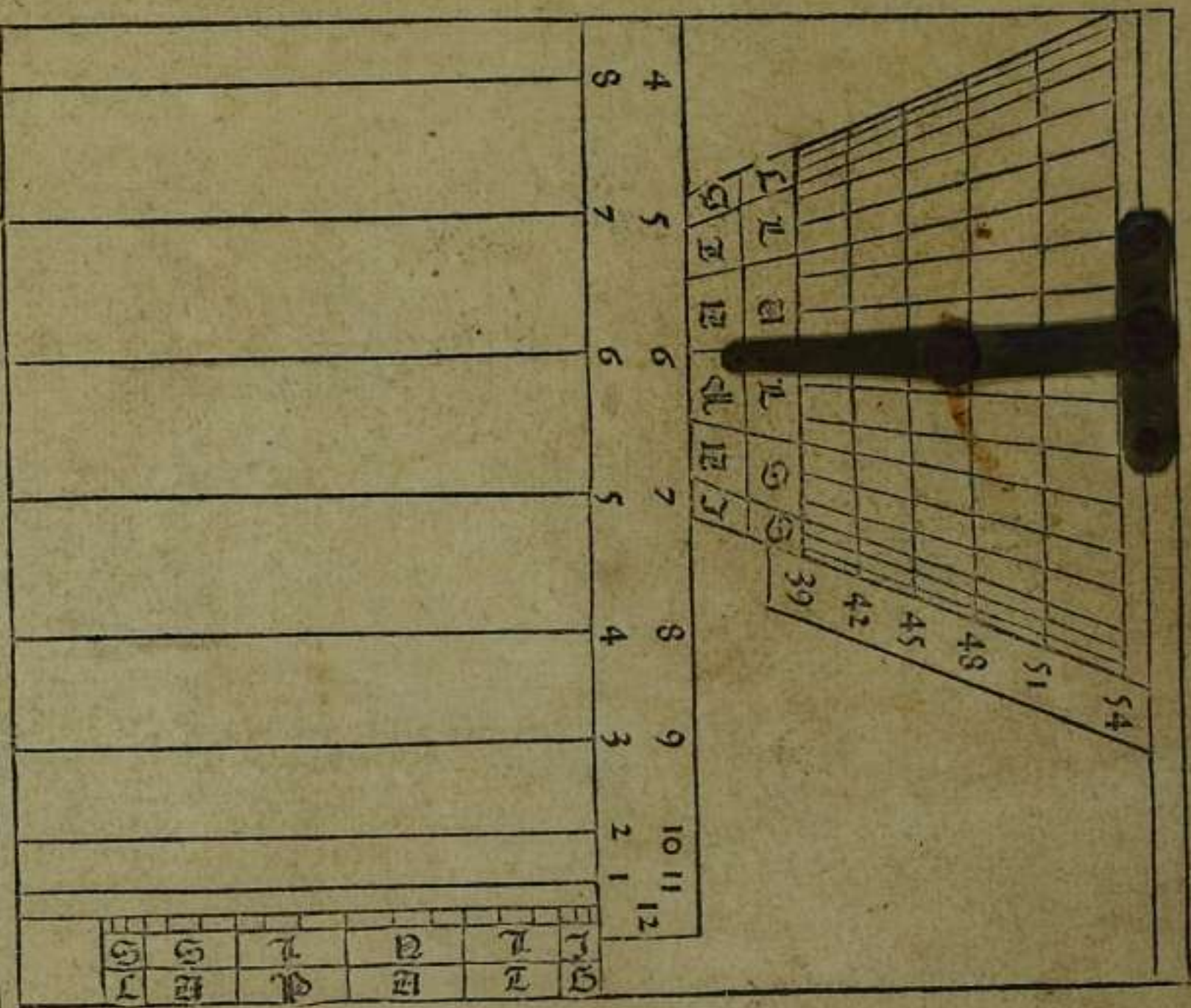
Quadrans horologii horizontis



Scala latitudinum

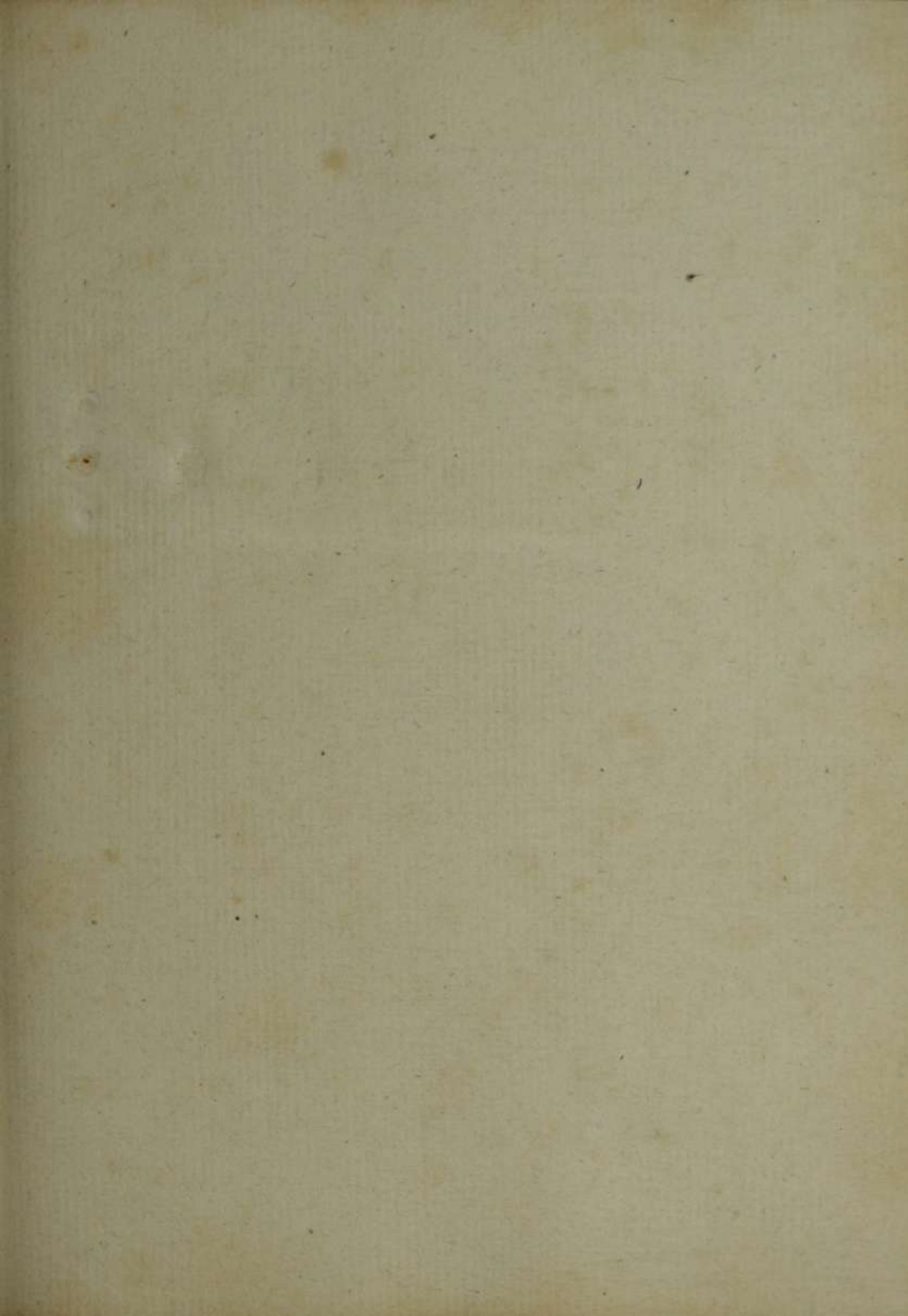
Quadratū horariū generale

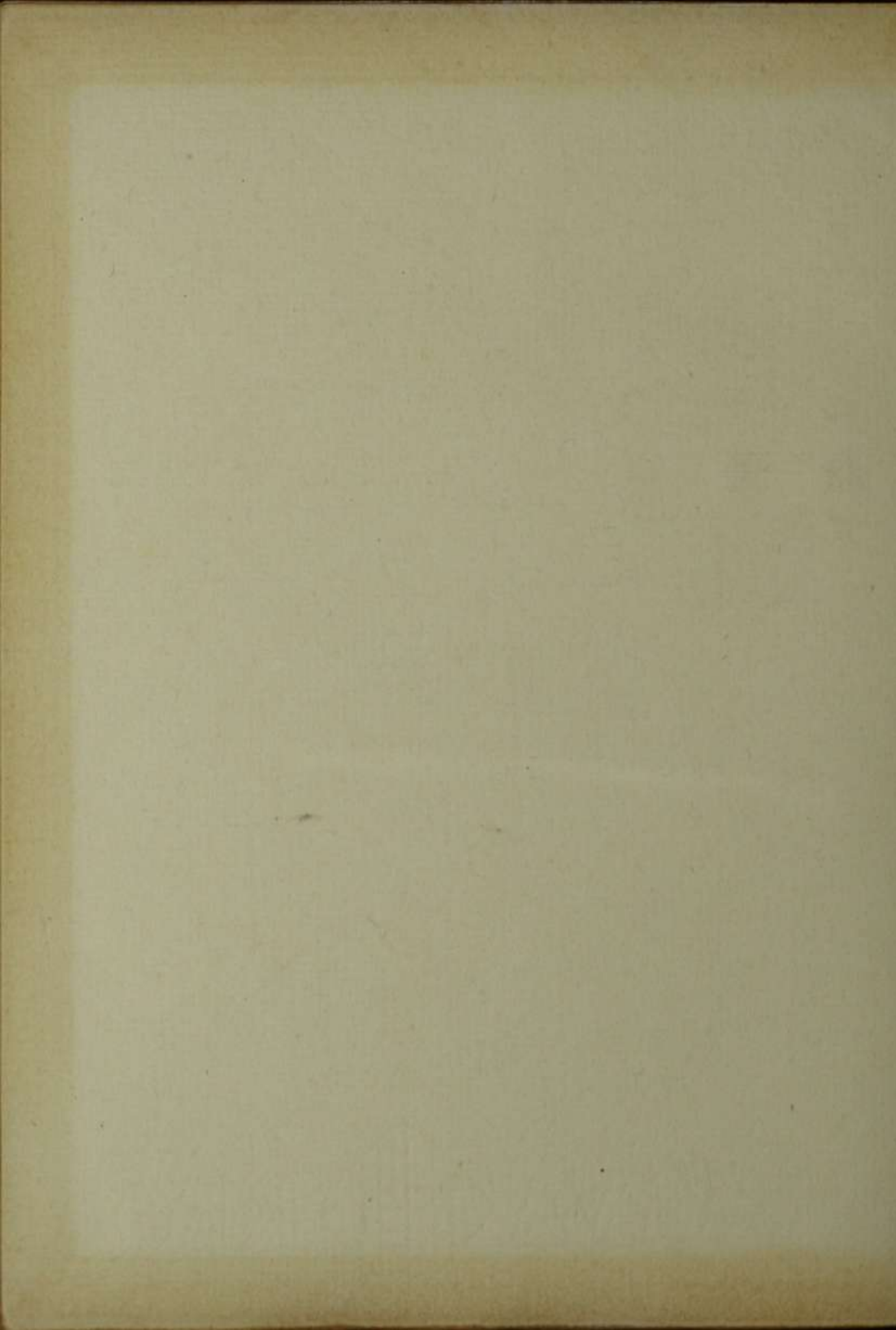
Scala latitudinū

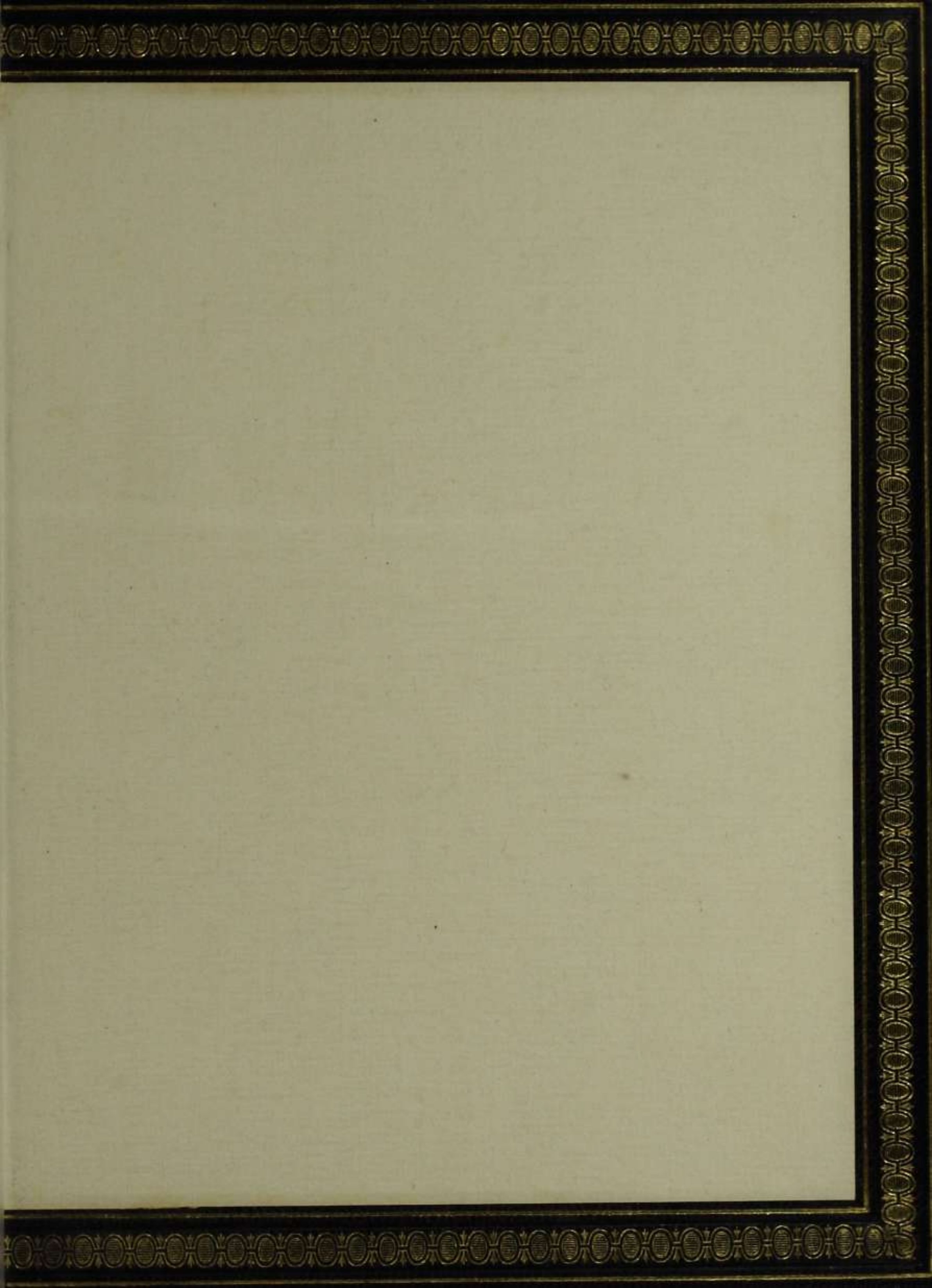


Signa meridiei

X







Venetis
1485

