

HAMLET.

OUVERTURE-FANTASIE.

P. Tschaikowsky, Op. 67.

TROMBA II IN B.

Lento lugubre.

1 7 9 A 15

mf *ff*

cre - - scen - - do sempre

Pochissimo più mosso.

1 13

ff >> G. P.

Tempo I.

Andante non troppo.

2

fff un poco string.

Moderato.

fff

Allegro vivace.

6 2 D 3

ff *ff*

Poco meno Allegro.

1 1 1

p *mf* *ff*

E 1 1

ff *p* *p*

TROMBA II IN B.

poco animato

mf *ff* *ff* *ff*

Più Allegro.

mf G. P.

Andante.

Moderato con moto.

Animando poco a poco.

9 F 9 10 G 10 *sfpp* *sfp* *sf*

sfp *sfp* *sf* *ff* *f*

Allegro vivace.

un poco cresc.

pp *mf* *f*

fff *ff* *ff*

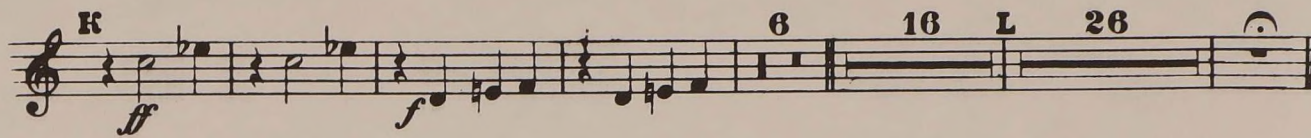
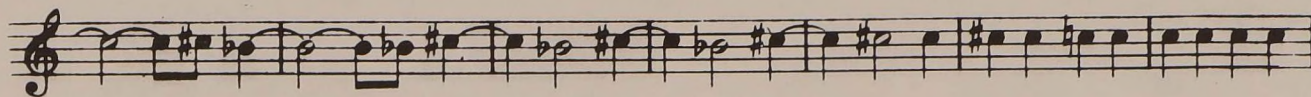
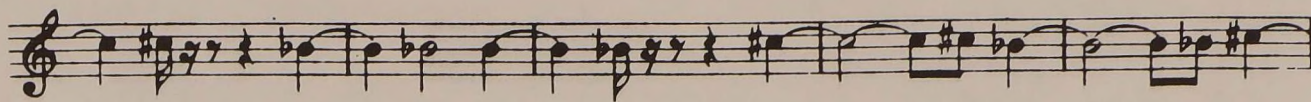
Non si cambia il tempo.

fff *ff*

fff

fff

TROMBA II IN B.

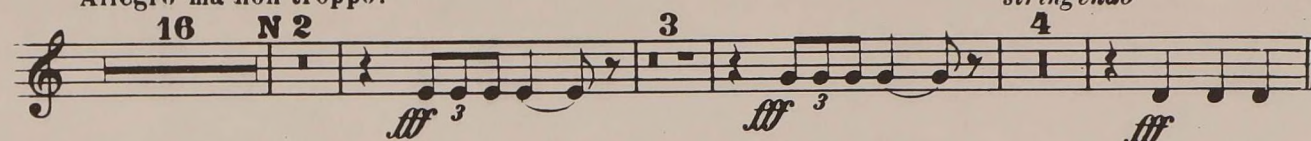


Moderato con moto, come sopra.

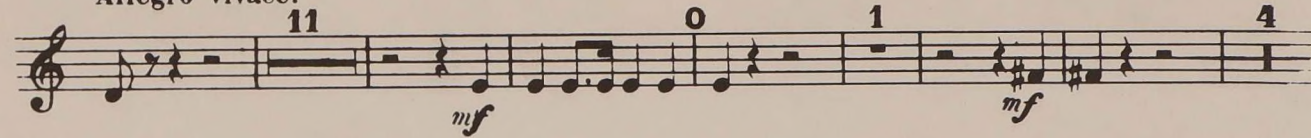


Poco animato.

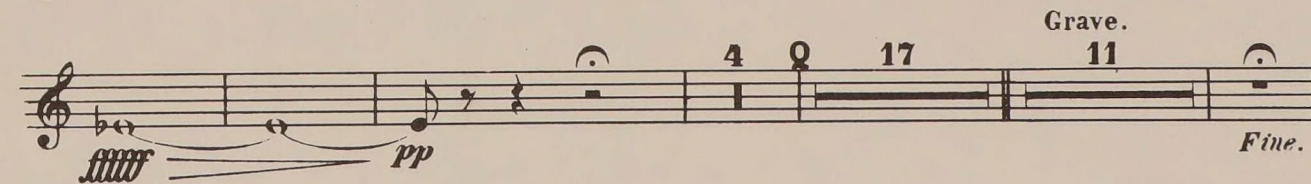
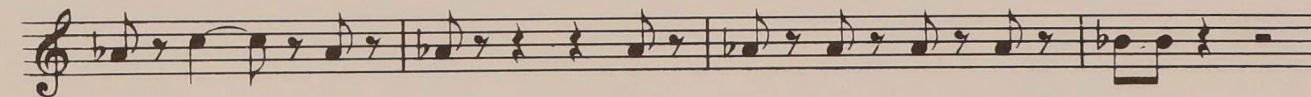
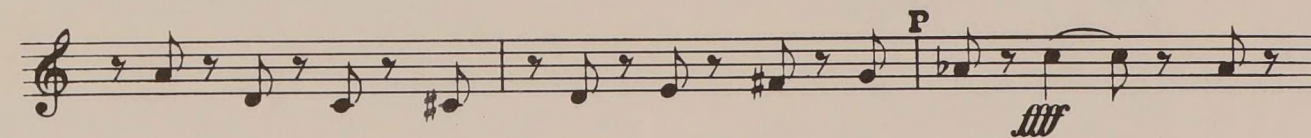
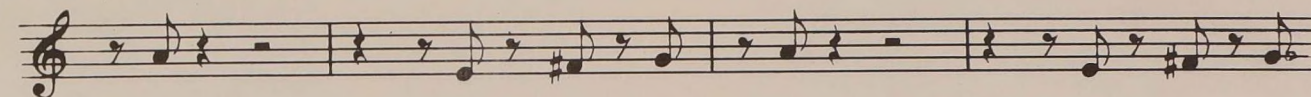
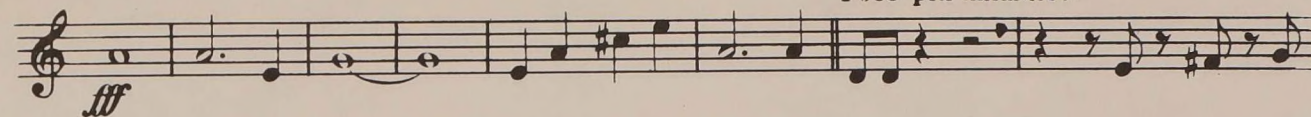
Allegro ma non troppo.



Allegro vivace.



Poco più animato.



Grave.

Fine.