

Cello.

5

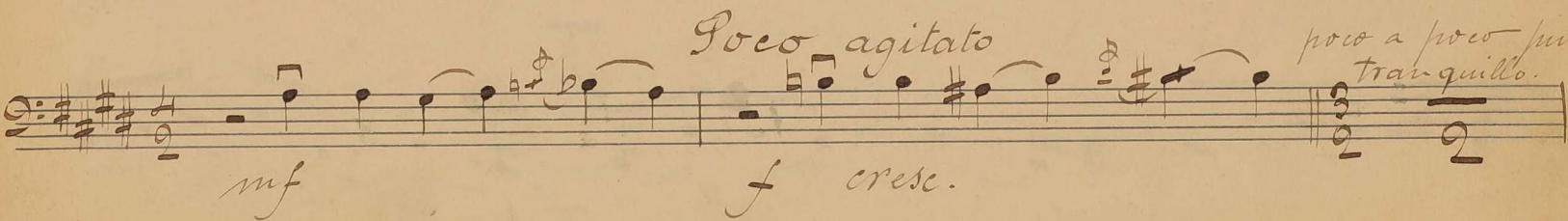
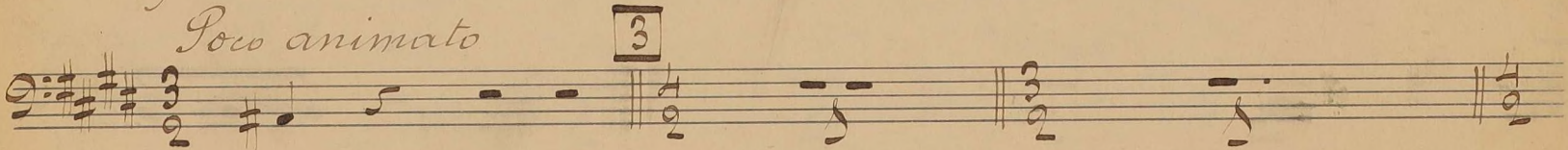
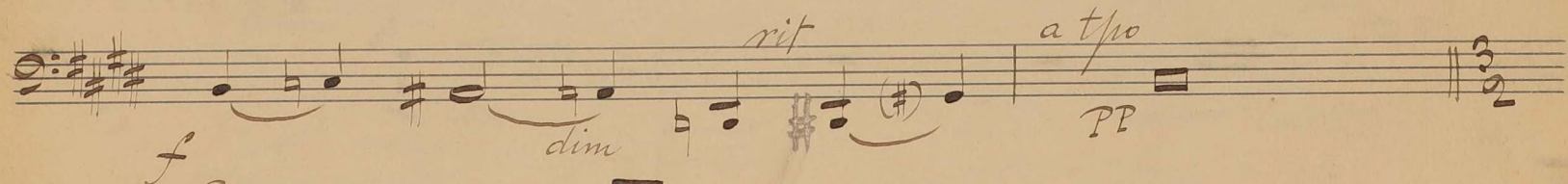
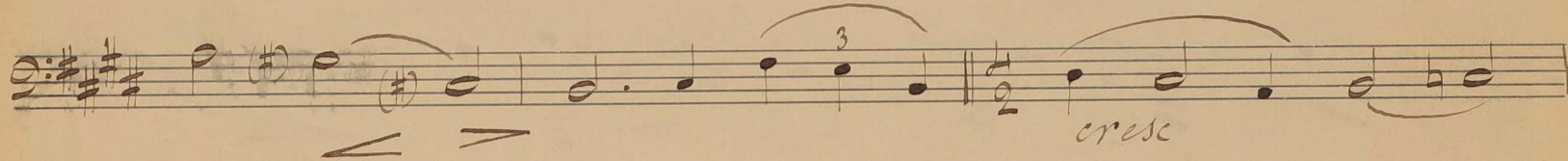
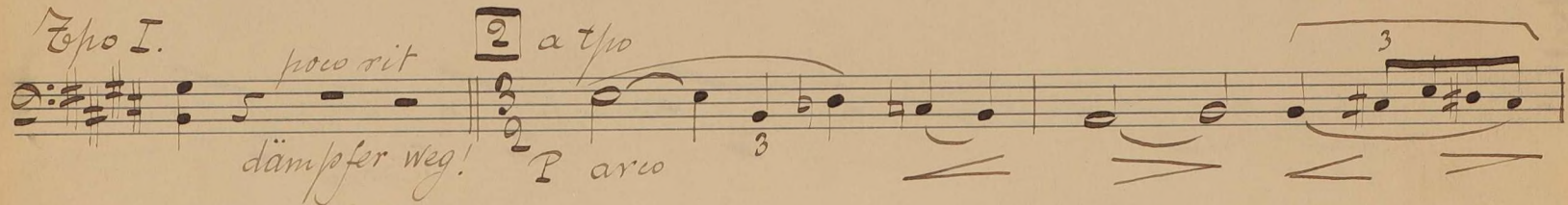
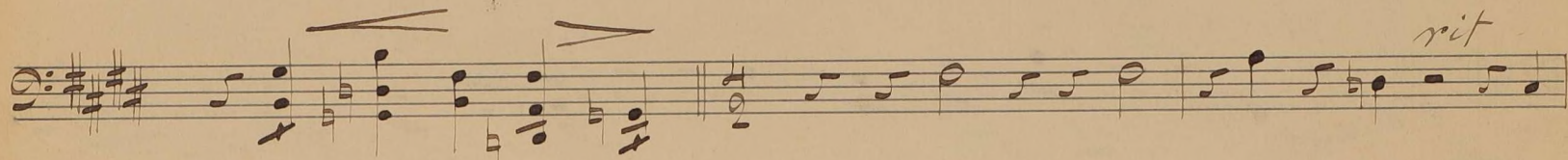
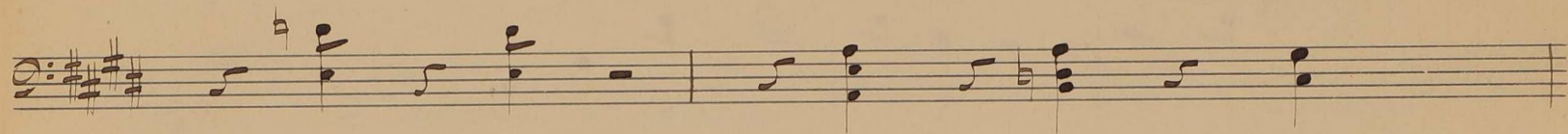
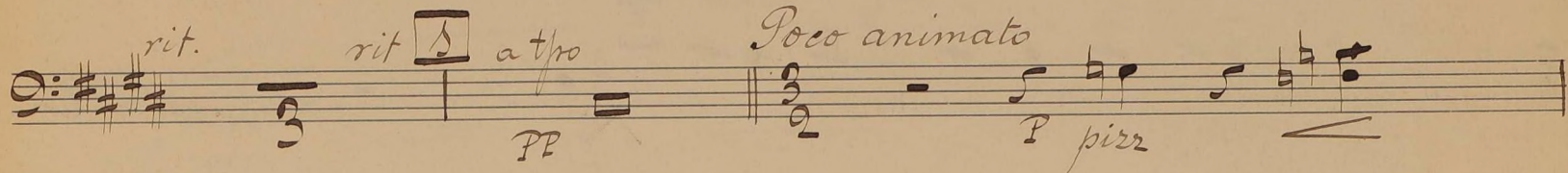
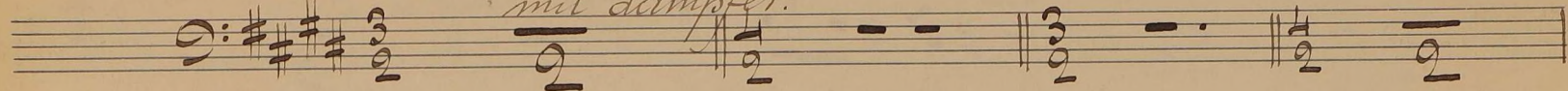


351

And. Ysasi, Op.

Adagio, con sentimento un poco austero.

mit dämpfer.



cello.

Tempo I.

rit

4

Poco animato
a tpo

cello.

rit *pp* 9 *a tpo*

crese rit *a tpo. ritenuto*

P 10 *ritenuto* *in tpo*
crese. f dim P

pp *P* *crese.*

rit. - molto *Adagio* 11 *rit*

rallent
PPP

a tpo 12 *Andte express:*
PPP *diviss* *P*

crese.

f *dim rit* *dim rit* *dim*

a tpo *P* *mol*

cello

83

Handwritten musical notation for measures 83-85. The score is written for cello in a key with three sharps (F#, C#, G#) and a common time signature. The notation includes a treble clef and a bass clef. Measure 83 features a melodic line in the treble and a bass line in the bass. Measure 84 continues the melodic line with a crescendo hairpin. Measure 85 is marked with a forte 'f' dynamic and a crescendo hairpin.

Handwritten musical notation for measures 86-88. The notation includes a treble clef and a bass clef. Measure 86 has a melodic line in the treble and a bass line in the bass. Measure 87 is marked with 'rit' (ritardando) and 'a tpo' (ad tempus), with a 'cresc' (crescendo) hairpin. Measure 88 is also marked with 'rit' and 'a tpo', with a 'cresc' hairpin.

Handwritten musical notation for measures 89-91. The notation includes a treble clef and a bass clef. Measure 89 is marked with 'dim' (diminuendo). Measure 90 is marked with a piano 'p' dynamic and a 'rit' hairpin. Measure 91 is marked with 'rit' and 'a tpo', with 'express' and 'miss' markings.

Handwritten musical notation for measures 92-93. The notation includes a treble clef and a bass clef. Measure 92 is marked with 'rit' and 'a tpo'. Measure 93 is marked with 'a tpo' and '84' in a box.

Handwritten musical notation for measures 94-95. The notation includes a treble clef and a bass clef. Measure 94 is marked with 'rit' and 'a tpo'. Measure 95 is marked with 'f' (forte) and 'express'.

Handwritten musical notation for measures 96-97. The notation includes a treble clef and a bass clef. Measure 96 is marked with a 'rit' hairpin. Measure 97 is marked with a 'rit' hairpin.

Handwritten musical notation for measures 98-100. The notation includes a treble clef and a bass clef. Measure 98 is marked with a 'rit' hairpin. Measure 99 is marked with a 'rit' hairpin. Measure 100 is marked with 'dim' (diminuendo).

35

a tpo

Handwritten musical notation for measures 35-36. The top staff is in treble clef with a 3/4 time signature and a key signature of one flat. The bottom staff is in bass clef with a 3/4 time signature and a key signature of one flat. Both staves begin with a dynamic marking of *P* (piano). The music consists of eighth and quarter notes with some slurs and accents.

a tpo

Continuation of the handwritten musical notation for measures 35-36. The notation continues with eighth and quarter notes, maintaining the *P* dynamic.

36

All^o molto mod^{to}

cresc

dim

rit

Handwritten musical notation for measures 36-37. Measure 36 ends with a *rit* (ritardando) marking. Measure 37 begins with a new key signature of two sharps and a dynamic marking of *f* (forte). The notation includes eighth and quarter notes with slurs.

P

Handwritten musical notation for measures 37-38. The top staff continues with eighth and quarter notes. The bottom staff begins with a dynamic marking of *P* (piano).

37

a tpo

mf

cresc

ff

Handwritten musical notation for measures 37-38. Measure 37 includes a *rit* marking and a dynamic of *mf*. Measure 38 includes a dynamic of *ff* and a *>* (accent) marking. The notation features eighth and quarter notes with slurs.

38

a tpo tranquillo

dim

P

Handwritten musical notation for measures 38-39. Measure 38 includes a *rit* marking and a dynamic of *P*. Measure 39 includes a dynamic of *P* and a *>* marking. The notation features eighth and quarter notes with slurs.

rit. - molto

Adagio

dim

pp

Handwritten musical notation for measures 39-40. Measure 39 includes a *rit. - molto* marking and a dynamic of *pp*. Measure 40 includes a dynamic of *pp*. The notation features eighth and quarter notes with slurs.

flöte I

Handwritten musical notation for measures 39-40, specifically for the flute I part. The notation includes eighth and quarter notes with slurs.

cello.

Andante

39 *f* *express* *dim*

mf *mf* *rit molto* *rit molto*

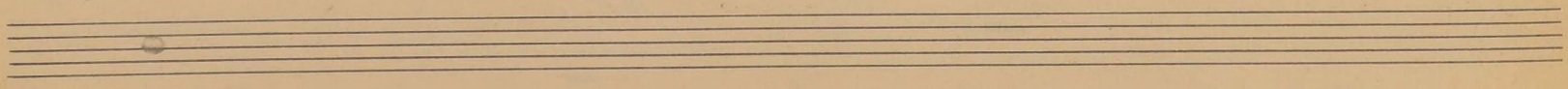
40 *atp* *pp* *express* *tr* *rit* *atp*

rit *atp* *P*

poco rit *atp* *dim* *PP* *P* *PP* *poco rit*

a tpo *P* *2* *ritard* *mit dämpfer*

41 *a tpo* *P* *a tpo* *P*



cello

Musical score for cello, measures 1-22. The score is written in treble clef with a key signature of two sharps (F# and C#). It consists of two staves. The upper staff features a melodic line with eighth-note patterns and slurs. The lower staff provides harmonic accompaniment with chords and moving lines. The time signature is 4/2.

23

Musical score for cello, measures 23-26. The score is written in treble clef with a key signature of two sharps. It consists of two staves. Measure 23 is marked with *crese* (crescendo) and *dim* (diminuendo). Measure 24 is marked with *crese*. Measure 25 is marked with *dim*. Measure 26 is marked with *P* (piano) and *Piu lento* (more slowly). The time signature is 4/2.

cello

P *assai* *PP*

24

P *rallent e dim*
~~*Piu mosso*~~
rallent e dim

a tpo tranquillo *cantabile* *PPP* *rit* *express* *a tpo*

PP *PPP*