

5

Cello-

Princine Igor //

| Danras

// Borodin //

*Pizz*  
**Presto** ||  $\text{F} \flat$   $\frac{6}{8}$  *ff* 7 5 7 2 3 4 5 6

8 9 10 11 12 13 14

15 16 17 18 19 20 21 22

23 24 25 26 27 28  $\text{A} = \text{b} = \text{a}$

*mf*

*Oreg*

Handwritten musical notation on a five-line staff. The key signature has one sharp (F#) and the time signature is 3/4. The notation includes several measures with slurs and dynamic markings: *cres* and *poco*.

Handwritten musical notation on a five-line staff. The key signature has one sharp (F#) and the time signature is 3/4. The notation includes several measures with slurs and dynamic markings: *f marcato*.

Handwritten musical notation on a five-line staff. The key signature has one sharp (F#) and the time signature is 3/4. The notation includes several measures with slurs and dynamic markings.

Handwritten musical notation on a five-line staff. The key signature has one sharp (F#) and the time signature is 3/4. The notation includes several measures with slurs and dynamic markings: *sempre ff*.

Handwritten musical notation on a five-line staff. The key signature has one sharp (F#) and the time signature is 3/4. The notation includes several measures with slurs and dynamic markings.

Handwritten musical notation on a five-line staff. The key signature has one sharp (F#) and the time signature is 3/4. The notation includes several measures with slurs and dynamic markings: *p dolce*.

Handwritten musical notation on a five-line staff. The key signature has one sharp (F#) and the time signature is 3/4. The notation includes several measures with slurs and dynamic markings.

Handwritten musical notation on a five-line staff. The key signature has one sharp (F#) and the time signature is 3/4. The notation includes several measures with slurs and dynamic markings: *crescend.*

Handwritten musical notation on a five-line staff. The key signature has one sharp (F#) and the time signature is 3/4. The notation includes several measures with slurs and dynamic markings.

Four empty five-line musical staves at the bottom of the page.

*Allegro*

Handwritten musical notation on a five-line staff. It begins with a treble clef, a key signature of one flat (B-flat), and a common time signature (C). The notes are mostly quarter notes and eighth notes, with some slurs and accents. Above the staff, the word "Arco" is written, followed by a dynamic marking "pp".

Handwritten musical notation on a five-line staff, continuing the piece. It features a treble clef, a key signature of one flat, and a common time signature. The notation includes various rhythmic values and slurs.

Handwritten musical notation on a five-line staff, continuing the piece. It features a treble clef, a key signature of one flat, and a common time signature. The notation includes various rhythmic values and slurs.

Handwritten musical notation on a five-line staff, continuing the piece. It features a treble clef, a key signature of one flat, and a common time signature. The notation includes various rhythmic values and slurs.

Handwritten musical notation on a five-line staff, continuing the piece. It features a treble clef, a key signature of one flat, and a common time signature. The notation includes various rhythmic values and slurs.

Handwritten musical notation on a five-line staff, continuing the piece. It features a treble clef, a key signature of one flat, and a common time signature. The notation includes various rhythmic values and slurs.

Handwritten musical notation on a five-line staff, continuing the piece. It features a treble clef, a key signature of one flat, and a common time signature. The notation includes various rhythmic values and slurs.

Handwritten musical notation on a five-line staff, continuing the piece. It features a treble clef, a key signature of one flat, and a common time signature. The notation includes various rhythmic values and slurs.

Handwritten musical notation on a five-line staff, continuing the piece. It features a treble clef, a key signature of one flat, and a common time signature. The notation includes various rhythmic values and slurs.

Handwritten musical notation on a five-line staff, continuing the piece. It features a treble clef, a key signature of one flat, and a common time signature. The notation includes various rhythmic values and slurs.

Handwritten musical notation on a five-line staff, continuing the piece. It features a treble clef, a key signature of one flat, and a common time signature. The notation includes various rhythmic values and slurs.

Handwritten musical notation on a five-line staff, continuing the piece. It features a treble clef, a key signature of one flat, and a common time signature. The notation includes various rhythmic values and slurs.

*Allegro*

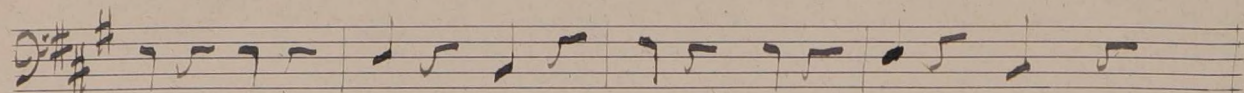
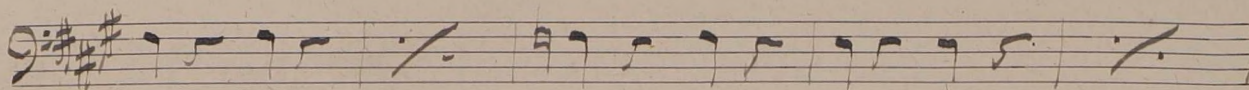
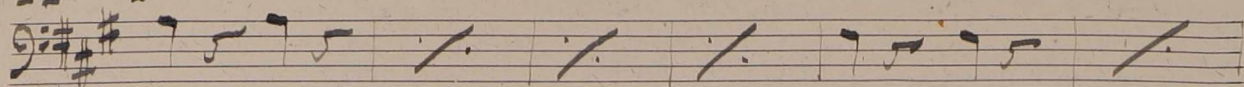
*Loes arco*

# Introduccion //

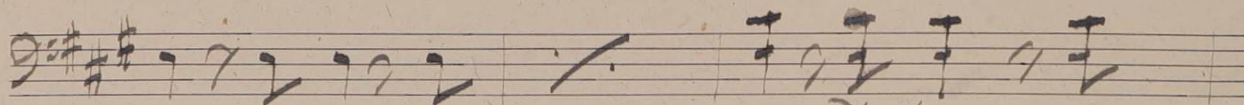
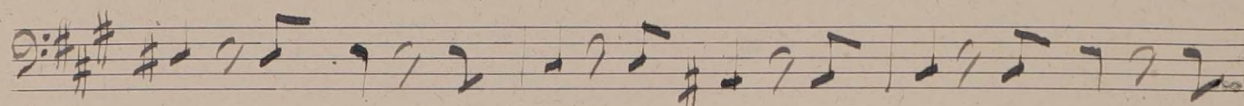
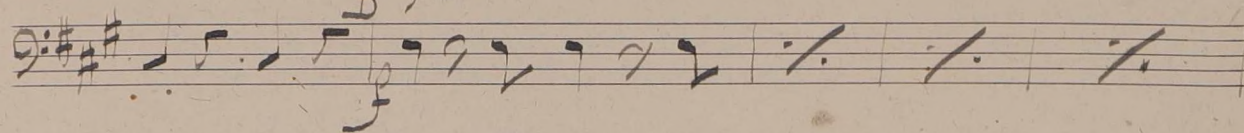
*Andantino*

*3 soli*  
*arco pp*

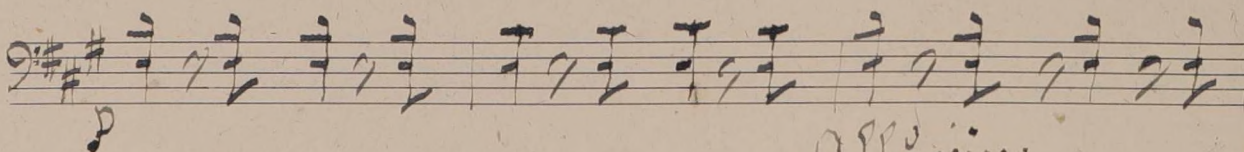
A *vivo*



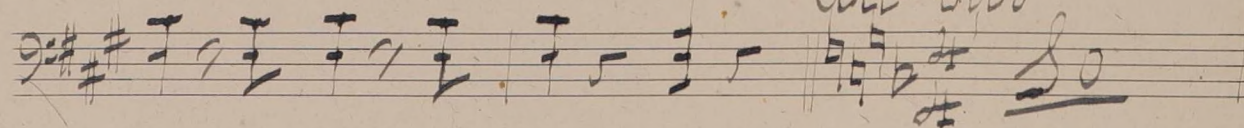
B *vivo*



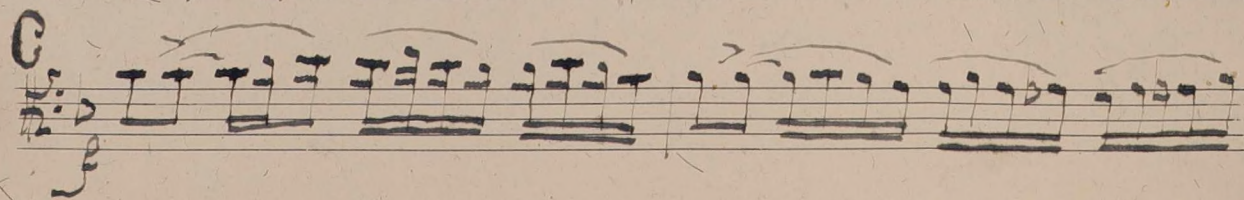
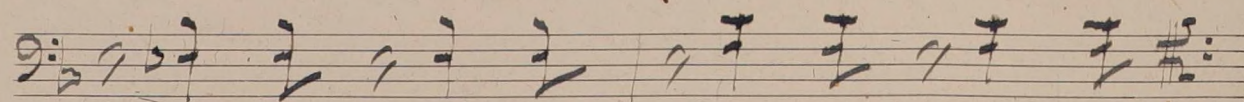
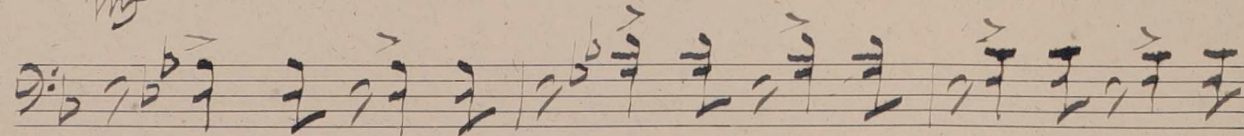
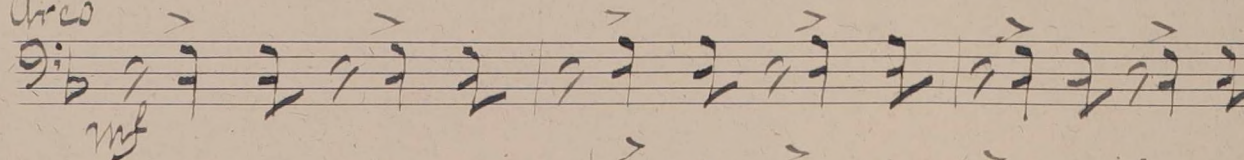
*dim.*



*all. vivo*



*Arco*



Handwritten musical notation on a single staff, featuring a series of eighth notes with accents.

Handwritten musical notation on a single staff, featuring a series of eighth notes with accents.

Handwritten musical notation on a single staff, featuring a series of eighth notes with accents.

Handwritten musical notation on a single staff, featuring a series of eighth notes with accents.

*sempre non divisi*

Handwritten musical notation on a single staff, featuring a series of eighth notes with accents.

Handwritten musical notation on a single staff, featuring a series of eighth notes with accents.

*mf*

Handwritten musical notation on a single staff, featuring a series of eighth notes with accents.

Handwritten musical notation on a single staff, featuring a series of eighth notes with accents.

Handwritten musical notation on a single staff, featuring a series of eighth notes with accents.

*pp*

*cres - - poco - a - poco - - -*

Handwritten signature or initials.

Four empty musical staves at the bottom of the page.

Handwritten musical notation on a five-line staff. The key signature has three sharps (F#, C#, G#) and the time signature is 3/4. The notation includes a treble clef, a common time signature, and a series of notes with stems and beams.

Handwritten musical notation on a five-line staff, continuing the piece. It features a bass clef and a key signature of three sharps.

Handwritten musical notation on a five-line staff, continuing the piece. It features a bass clef and a key signature of three sharps.

Handwritten musical notation on a five-line staff, continuing the piece. It features a bass clef and a key signature of three sharps.

Handwritten musical notation on a five-line staff, continuing the piece. It features a bass clef and a key signature of three sharps.

Handwritten musical notation on a five-line staff, continuing the piece. It features a bass clef and a key signature of three sharps.

Handwritten musical notation on a five-line staff, continuing the piece. It features a bass clef and a key signature of three sharps.

Handwritten musical notation on a five-line staff, continuing the piece. It features a bass clef and a key signature of three sharps.

Handwritten musical notation on a five-line staff, continuing the piece. It features a bass clef and a key signature of three sharps.

Handwritten musical notation on a five-line staff, continuing the piece. It features a bass clef and a key signature of three sharps.

Handwritten musical notation on a five-line staff, continuing the piece. It features a bass clef and a key signature of three sharps.

Handwritten musical notation on a five-line staff, continuing the piece. It features a bass clef and a key signature of three sharps. The word "divis" is written above the staff and "cres" is written below it.



*cres*

*cres* *p*

*cres* *p*

*unis*

Handwritten musical notation on a five-line staff, featuring a treble clef, a key signature of two sharps (F# and C#), and a 9/8 time signature. The notation includes various note values and rests.

Handwritten musical notation on a five-line staff, continuing the piece with similar notation and a trill-like flourish above the final note.

Handwritten musical notation on a five-line staff, including a double bar line and a fermata over a note. Above the staff, there are handwritten annotations: "12 >" and "4 24 >".

Handwritten musical notation on a five-line staff, showing a sequence of notes and rests.

Handwritten musical notation on a five-line staff, featuring a treble clef, a key signature of two sharps, and a 9/8 time signature.

Handwritten musical notation on a five-line staff, continuing the melodic line.

Handwritten musical notation on a five-line staff, including a trill-like flourish above the first note.

Handwritten musical notation on a five-line staff, showing a sequence of notes and rests.

Handwritten musical notation on a five-line staff, including a trill-like flourish above a note and a fermata over the final note.

Handwritten musical notation on a five-line staff, featuring a double bar line and a fermata over a note.

Handwritten musical notation on a five-line staff, showing a sequence of notes and rests.

Handwritten musical notation on a five-line staff, including a double bar line and a fermata over a note. At the bottom right, the text "divis 9." is written.

Musical notation for the first system, featuring a treble clef with a key signature of two sharps (F# and C#) and a series of whole notes on a single pitch.

**Presto** *pur* *ff*

Musical notation for the second system, starting with a treble clef, a key signature of two sharps, and a 6/8 time signature. It contains rhythmic patterns with slurs and dynamic markings.

Musical notation for the third system, continuing the rhythmic patterns from the previous system.

Musical notation for the fourth system, continuing the rhythmic patterns.

Musical notation for the fifth system, continuing the rhythmic patterns.

Musical notation for the sixth system, continuing the rhythmic patterns.

Musical notation for the seventh system, continuing the rhythmic patterns.

Musical notation for the eighth system, continuing the rhythmic patterns.

Musical notation for the ninth system, featuring a key signature change to one sharp (F#) and a 'K' marking above the staff.

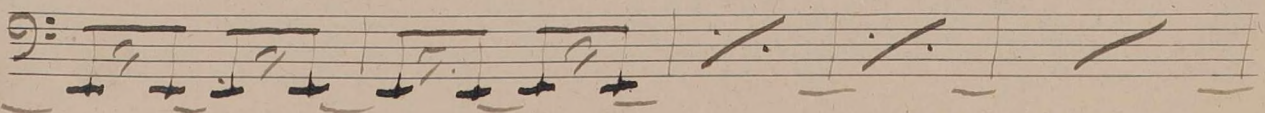
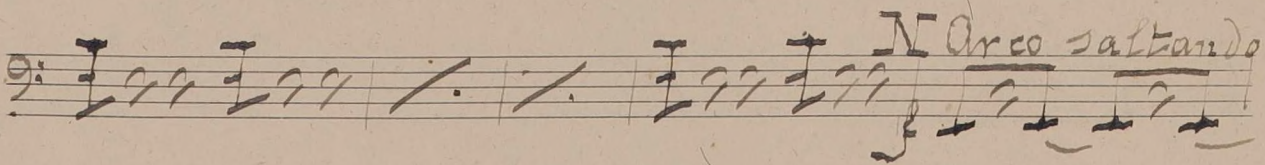
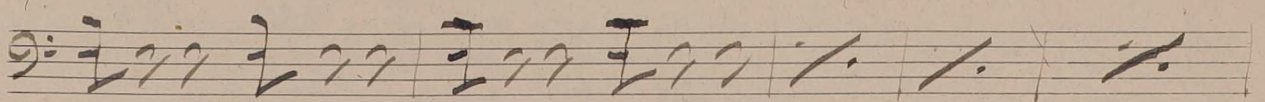
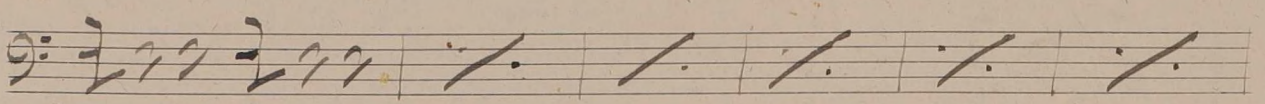
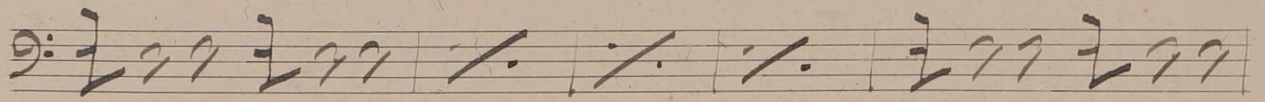
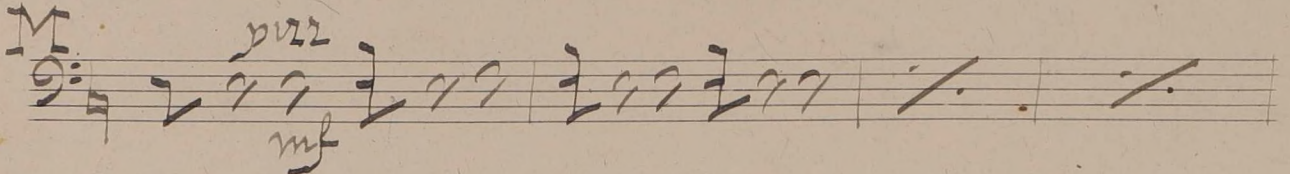
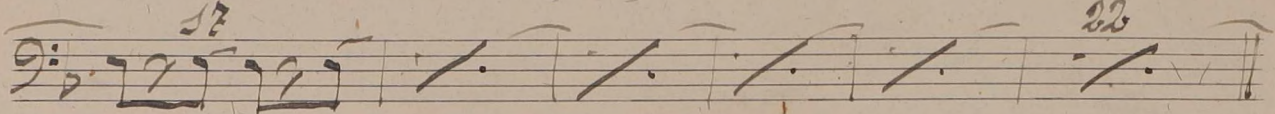
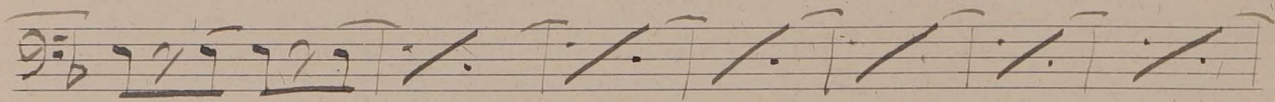
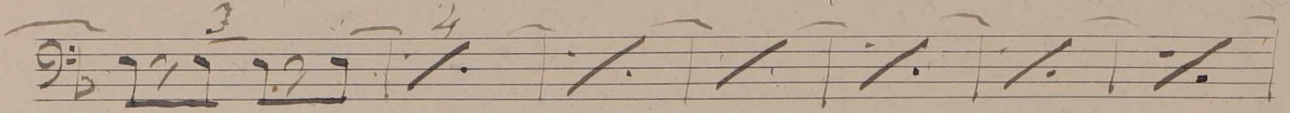
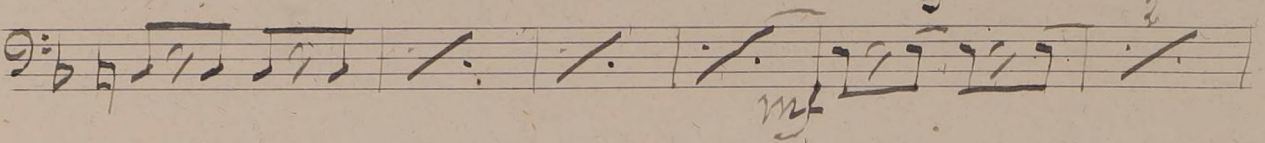
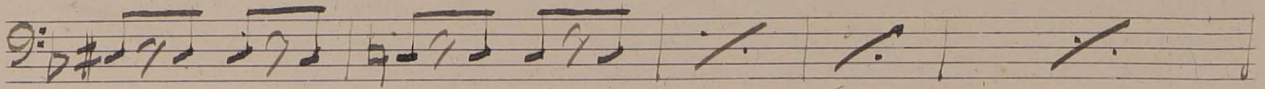
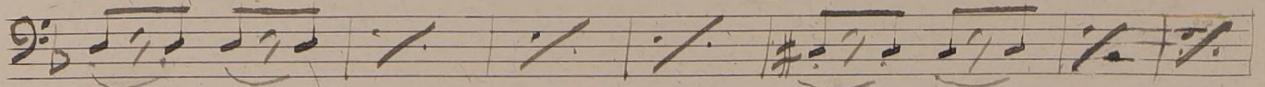
Musical notation for the tenth system, featuring rhythmic patterns with slurs and dynamic markings.

Musical notation for the eleventh system, featuring rhythmic patterns with slurs and dynamic markings.

*mf - - cres -*

Handwritten signature or initials.

2



Modrato alla breve *2/2* *p dolce*

*cantabile*

*Dimin.*

(P)

8

*mus*

*divis*

*mus*

*Arco*

*Presto*  $\frac{9}{8}$  *pizz* *ff*

*Handwritten signature*

Handwritten musical notation on a single staff, featuring rhythmic patterns of eighth and sixteenth notes.

Handwritten musical notation on a single staff, including the dynamic marking *mf* and the instruction *arco* with a bow hair symbol.

Handwritten musical notation on a single staff, showing a sequence of notes with slurs and fermatas.

Handwritten musical notation on a single staff, featuring notes with slurs and fermatas.

Handwritten musical notation on a single staff, showing notes with slurs and fermatas.

Handwritten musical notation on a single staff, including a clef change to a soprano clef and notes with slurs and fermatas.

Handwritten musical notation on a single staff, showing notes with slurs and fermatas.

Handwritten musical notation on a single staff, featuring notes with slurs and fermatas.

Handwritten musical notation on a single staff, showing notes with slurs and fermatas.

Handwritten musical notation on a single staff, featuring notes with slurs and fermatas.

Handwritten musical notation on a single staff, including the dynamic marking *mf* and the instruction *piu*.

Handwritten musical notation on a single staff, showing notes with slurs and fermatas.



Handwritten musical notation on a single staff, featuring rhythmic patterns of eighth and sixteenth notes.

Handwritten musical notation on a single staff, starting with a measure number '15' above the first measure.

Handwritten musical notation on a single staff, including a measure number '8' and the instruction 'arco' written above the staff.

Handwritten musical notation on a single staff, showing a melodic line with slurs and accents.

Handwritten musical notation on a single staff, continuing the melodic line with various articulations.

Handwritten musical notation on a single staff, featuring a series of rhythmic figures.

Handwritten musical notation on a single staff, showing a continuation of the rhythmic patterns.

Handwritten musical notation on a single staff, concluding a section with a double bar line.

Handwritten musical notation on a single staff, beginning with the instruction 'All<sup>o</sup> con spirito' and a key signature change to two sharps.

Handwritten musical notation on a single staff, showing a series of rhythmic figures in the new key signature.

Handwritten musical notation on a single staff, continuing the rhythmic patterns in the new key signature.

Handwritten musical notation on a single staff, concluding the piece with a final cadence.

Handwritten signature or initials at the bottom right corner of the page.

Handwritten musical notation on a five-line staff. The key signature has three sharps (F#, C#, G#). The notation includes eighth and sixteenth notes with various accents and slurs. A handwritten 'V' is above the first measure.

Handwritten musical notation on a five-line staff. The key signature has three sharps. The notation includes eighth and sixteenth notes with accents and slurs. A handwritten 'V' is above the last measure.

Handwritten musical notation on a five-line staff. The key signature has three sharps. The notation includes eighth and sixteenth notes with accents and slurs. A handwritten 'W' is above the first measure, and 'mf' is written below the staff.

Handwritten musical notation on a five-line staff. The key signature has three sharps. The notation includes eighth and sixteenth notes with accents and slurs.

Handwritten musical notation on a five-line staff. The key signature has three sharps. The notation includes eighth and sixteenth notes with accents and slurs.

Handwritten musical notation on a five-line staff. The key signature has three sharps. The notation includes eighth and sixteenth notes with accents and slurs. A handwritten 'Arco' is above the first measure, and 'mf' and 'X' are written below the staff.

Handwritten musical notation on a five-line staff. The key signature has three sharps. The notation includes eighth and sixteenth notes with accents and slurs. A handwritten 'cres.' is written below the staff.

Handwritten musical notation on a five-line staff. The key signature has three sharps. The notation includes eighth and sixteenth notes with accents and slurs.

Handwritten musical notation on a five-line staff. The key signature has three sharps. The notation includes eighth and sixteenth notes with accents and slurs. A handwritten 'V' is above the first measure, and 'ff' is written below the staff.

Handwritten musical notation on a five-line staff. The key signature has three sharps. The notation includes eighth and sixteenth notes with accents and slurs.

Handwritten musical notation on a five-line staff. The key signature has three sharps. The notation includes eighth and sixteenth notes with accents and slurs.

Handwritten musical notation on a five-line staff. The key signature has three sharps. The notation includes eighth and sixteenth notes with accents and slurs. A handwritten 'ff' is written below the first measure.

Handwritten musical notation on three staves. The first staff shows a sequence of eighth notes. The second and third staves contain chords with accents and a final double bar line.

Ten empty musical staves for writing.