

Fagot III

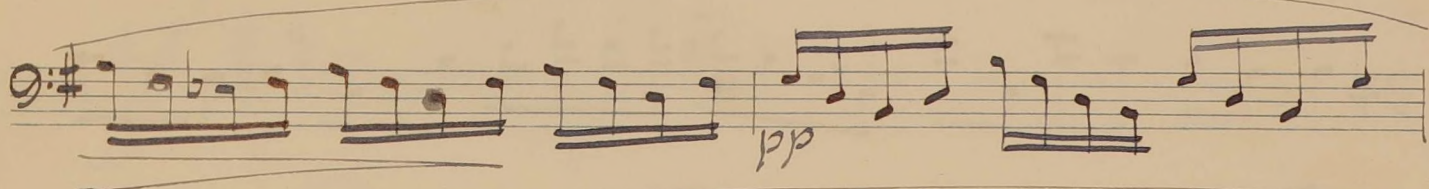
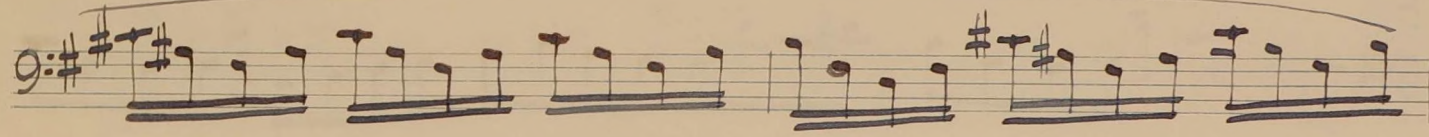
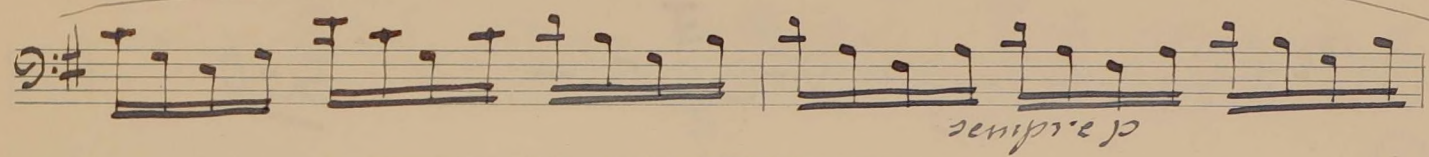
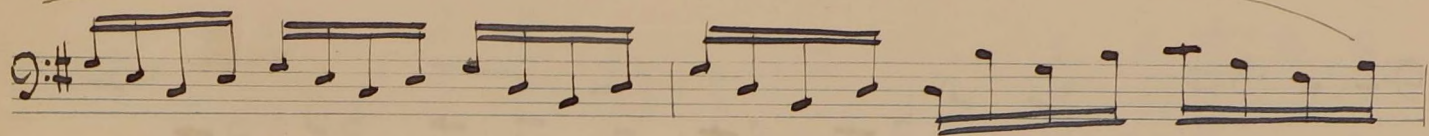
Benvenuto Cellini -

(Overture)

Beethoven //

All^o deciso con impeto

Larghetto



Handwritten musical notation on a single staff. The key signature is G major (one sharp). The notation includes a half note G4, followed by a series of eighth notes: A4, B4, C5, B4, A4, G4, F4, E4, D4. Dynamic markings include *sf* (sforzando) and *mp* (mezzo-piano).

Handwritten musical notation on a single staff. The key signature is G major. The notation includes a half note G4, followed by a series of eighth notes: A4, B4, C5, B4, A4, G4, F4, E4, D4. A circled sharp sign (#) is present above the staff.

Handwritten musical notation on a single staff. The key signature is G major. The notation includes a half note G4, followed by a series of eighth notes: A4, B4, C5, B4, A4, G4, F4, E4, D4. A circled sharp sign (#) is present above the staff.

Handwritten musical notation on a single staff. The key signature is G major. The notation includes a half note G4, followed by a series of eighth notes: A4, B4, C5, B4, A4, G4, F4, E4, D4. The word *mes* is written below the staff.

Handwritten musical notation on a single staff. The key signature is G major. The notation includes a half note G4, followed by a series of eighth notes: A4, B4, C5, B4, A4, G4, F4, E4, D4. The text *All' deciso con impeto* is written above the staff, and the number 20 is written below the staff.

Handwritten musical notation on a single staff. The key signature is G major. The notation includes a half note G4, followed by a series of eighth notes: A4, B4, C5, B4, A4, G4, F4, E4, D4. A circled number 5 is written above the staff.

Handwritten musical notation on a single staff. The key signature is G major. The notation includes a half note G4, followed by a series of eighth notes: A4, B4, C5, B4, A4, G4, F4, E4, D4.

Handwritten musical notation on a single staff. The key signature is G major. The notation includes a half note G4, followed by a series of eighth notes: A4, B4, C5, B4, A4, G4, F4, E4, D4.

Handwritten musical notation on a single staff. The key signature is G major. The notation includes a half note G4, followed by a series of eighth notes: A4, B4, C5, B4, A4, G4, F4, E4, D4.

Handwritten musical notation on a single staff. The key signature is G major. The notation includes a half note G4, followed by a series of eighth notes: A4, B4, C5, B4, A4, G4, F4, E4, D4. The word *sf* (sforzando) is written below the staff.

Handwritten musical notation on a five-line staff. The key signature is one sharp (F#). The notation includes various rhythmic values and dynamic markings such as *mf*.

Handwritten musical notation on a five-line staff. The key signature is one sharp (F#). A circled number '6' is present above the staff. Dynamic markings include *mf*.

Handwritten musical notation on a five-line staff. The key signature is one sharp (F#). Dynamic markings include *mf*.

Handwritten musical notation on a five-line staff. The key signature is one sharp (F#). Dynamic markings include *mf*.

Handwritten musical notation on a five-line staff. The key signature is one sharp (F#). Dynamic markings include *mf*.

Handwritten musical notation on a five-line staff. The key signature is one sharp (F#). Dynamic markings include *mf*.

Handwritten musical notation on a five-line staff. The key signature is one sharp (F#). The staff concludes with a double bar line and a fermata.

Handwritten musical notation on a five-line staff. The key signature is one sharp (F#). Dynamic markings include *ff*.

Handwritten musical notation on a five-line staff. The key signature is one sharp (F#). It features circled numbers '7' and '8' above the staff, and dynamic markings *ff*.

Handwritten musical notation on a five-line staff. The key signature is one sharp (F#). It features a circled number '8' above the staff and dynamic markings *ff*. The notation includes a large, decorative flourish.

Handwritten musical notation on a single staff, starting with a treble clef and a key signature of one sharp (F#). The music consists of a sequence of eighth and sixteenth notes. A Roman numeral 'II' is written above the first measure.

Handwritten musical notation on a single staff, starting with a treble clef and a key signature of one sharp (F#). The music features a series of chords and intervals. A circled number '9' is written above the first measure.

Handwritten musical notation on a single staff, starting with a treble clef and a key signature of one sharp (F#). The music features a series of chords and intervals. A circled number '9' is written above the first measure.

Handwritten musical notation on a single staff, starting with a treble clef and a key signature of one sharp (F#). The music features a series of chords and intervals. A circled number '10' is written above the first measure.

Handwritten musical notation on a single staff, starting with a treble clef and a key signature of one sharp (F#). The music features a series of chords and intervals. A circled number '10' is written above the first measure.

Handwritten musical notation on a single staff, starting with a treble clef and a key signature of one sharp (F#). The music features a series of chords and intervals. A circled number '11' is written above the first measure.

Handwritten musical notation on a single staff, starting with a treble clef and a key signature of one sharp (F#). The music features a series of chords and intervals. A circled number '12' is written above the first measure. The word 'ritar' is written above the first measure, and 'rall' is written above the second measure.

Handwritten musical notation on a single staff, starting with a treble clef and a key signature of one sharp (F#). The music features a series of chords and intervals. A circled number '13' is written above the first measure. The word 'mf cres' is written below the first measure.

Handwritten musical notation on a single staff, starting with a treble clef and a key signature of one sharp (F#). The music features a series of chords and intervals. A circled number '13' is written above the first measure. The word 'III' is written above the first measure.

Handwritten musical notation on a single staff, starting with a treble clef and a key signature of one sharp (F#). The music features a series of chords and intervals. A circled number '13' is written above the first measure.

Musical notation on two staves. The first staff begins with a treble clef, a key signature of one sharp (F#), and a 2/4 time signature. It contains several measures of eighth and sixteenth notes with accents. The second staff continues the melody with similar rhythmic patterns and includes some chordal textures.

Musical notation on a single staff. It starts with a treble clef, a key signature of one sharp (F#), and a 6/8 time signature. The notes are mostly whole and half notes. A circled measure number '14' is present, followed by the number '58' written below the staff. The word 'dim.' is written below the first few notes.

Musical notation on a single staff. It begins with a treble clef, a key signature of one sharp (F#), and a 9/8 time signature. A circled measure number '15' is at the start. The notation includes eighth and sixteenth notes with various dynamics and accents.

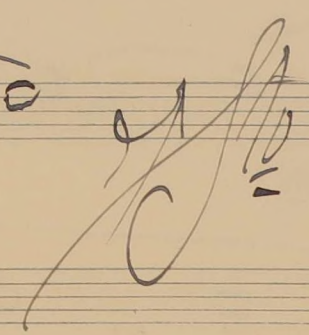
Musical notation on a single staff. It starts with a treble clef, a key signature of one sharp (F#), and a 9/8 time signature. The notes are mostly eighth and sixteenth notes with accents.

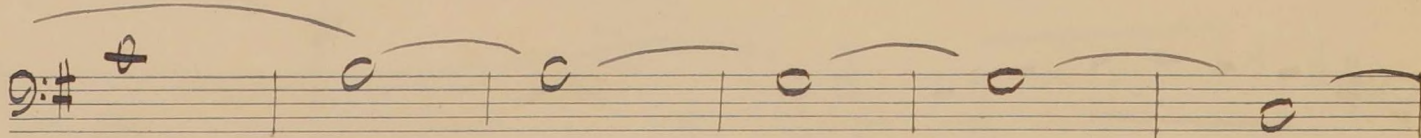
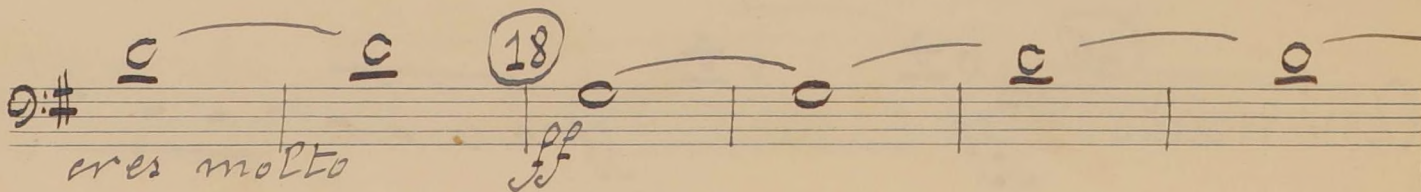
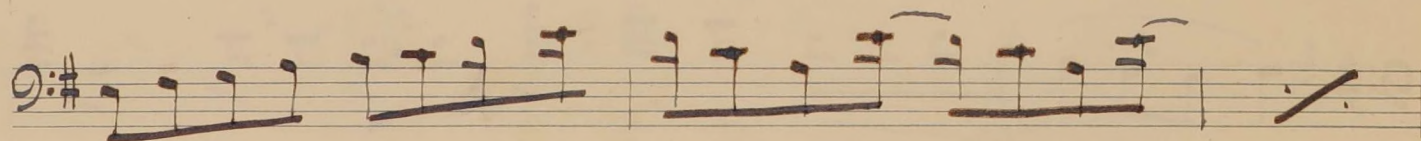
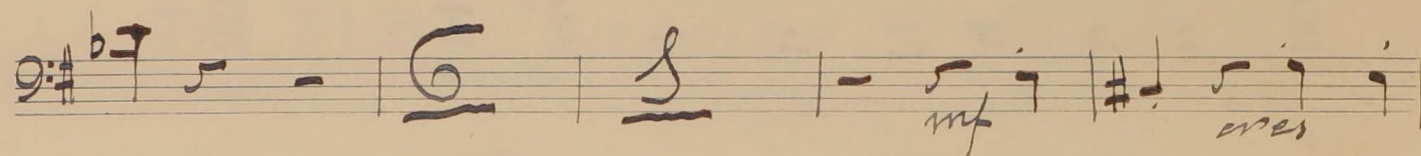
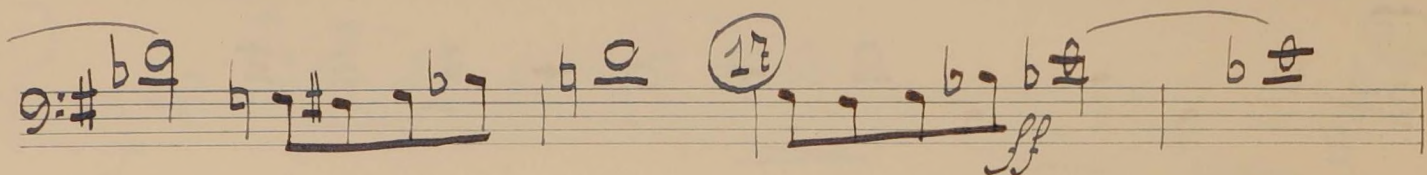
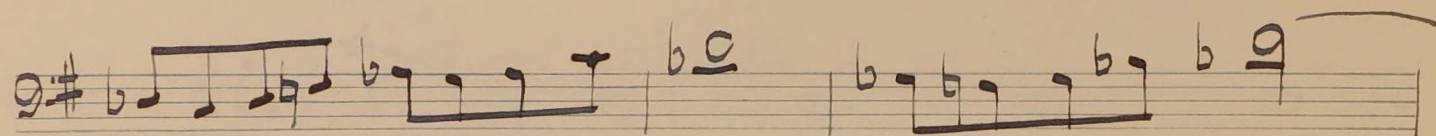
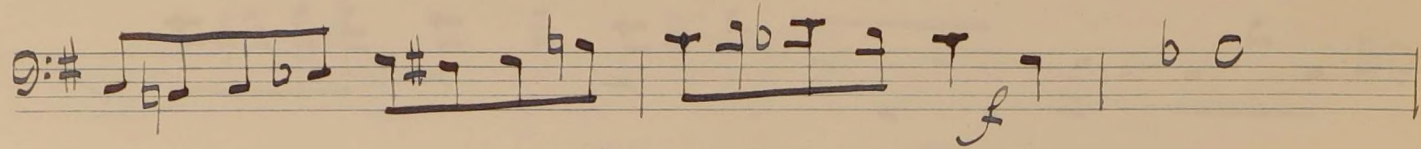
Musical notation on a single staff. It begins with a treble clef, a key signature of one sharp (F#), and a 9/8 time signature. The notation features eighth and sixteenth notes with accents and dynamic markings.

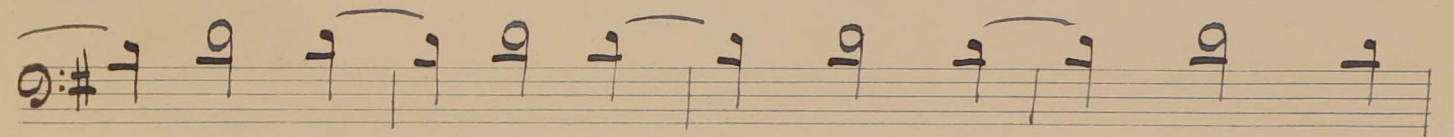
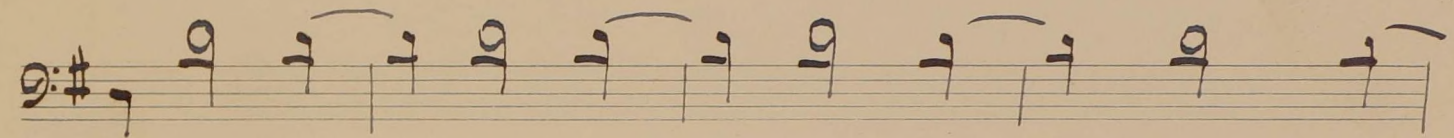
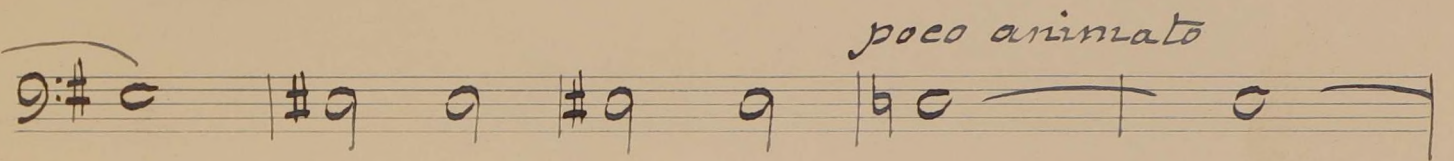
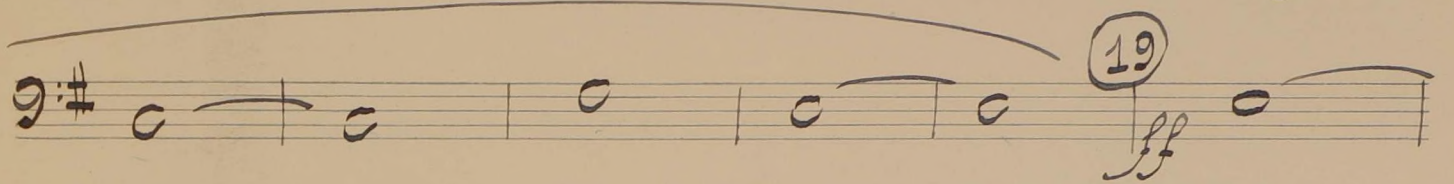
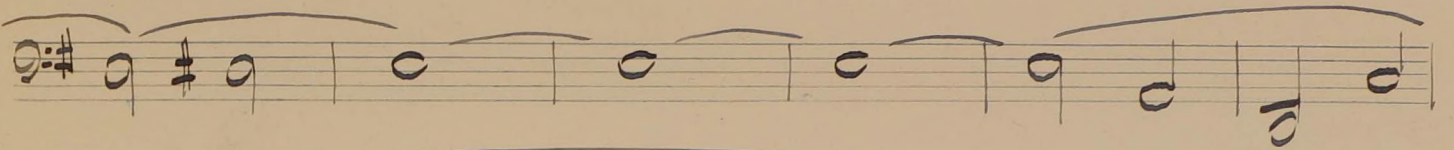
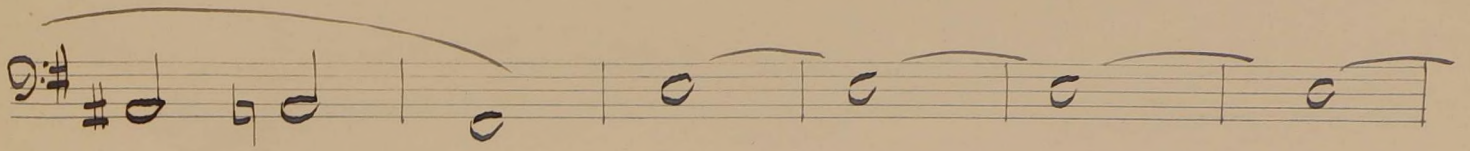
Musical notation on a single staff. It starts with a treble clef, a key signature of one sharp (F#), and a 9/8 time signature. It includes a triplet of eighth notes and other rhythmic patterns.

Musical notation on a single staff. It begins with a treble clef, a key signature of one sharp (F#), and a 9/8 time signature. A circled measure number '16' is at the start. The word 'Animato' is written to the left of the staff. The notation includes eighth and sixteenth notes with dynamic markings.

Musical notation on a single staff. It starts with a treble clef, a key signature of one sharp (F#), and a 9/8 time signature. The notes are mostly eighth and sixteenth notes with dynamic markings. A blue 'f' is written below the first few notes.







cello

Basson II



senza ritard

