

Oboe 2^o

202

Suite

de

Lully.



No. 1. Introduccion.

allegretto || $\text{F} : \text{C}$

A

B

D

Handwritten musical notation for the first piece, consisting of three staves. The first staff has a treble clef and a key signature of one sharp (F#). The second staff has a bass clef. The third staff has a treble clef and ends with the word "Fin".

poco riten
 Più mosso [E 8] [F 2] D.C. hasta el Fin

No. 2. Nocturno.

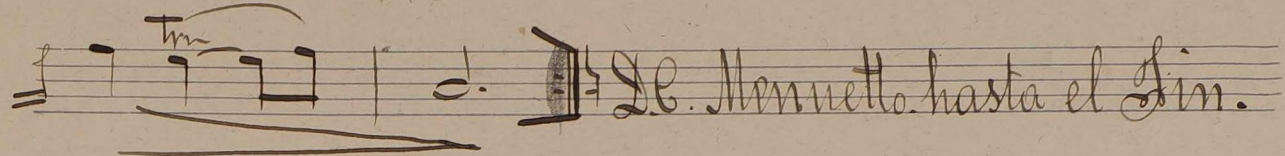
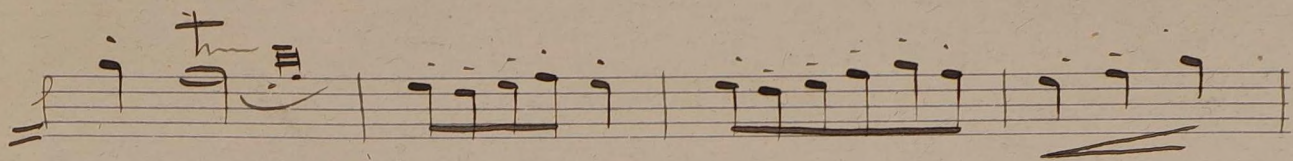
Poco Adagio | $\text{F} \text{ } \frac{3}{2}$ SO | **A** - *p* 9. 9. |

Handwritten musical notation for the second piece, Nocturno, consisting of five staves. The first staff has a treble clef and a key signature of two flats (Bb, Eb). The second staff has a bass clef. The third staff has a treble clef and a key signature of one sharp (F#). The fourth staff has a bass clef and a key signature of one sharp (F#). The fifth staff has a treble clef and a key signature of one sharp (F#). The piece ends with the word "Fin".

SS

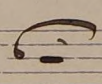
No. 3. Menuetto.

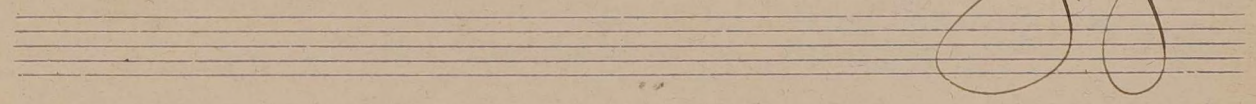
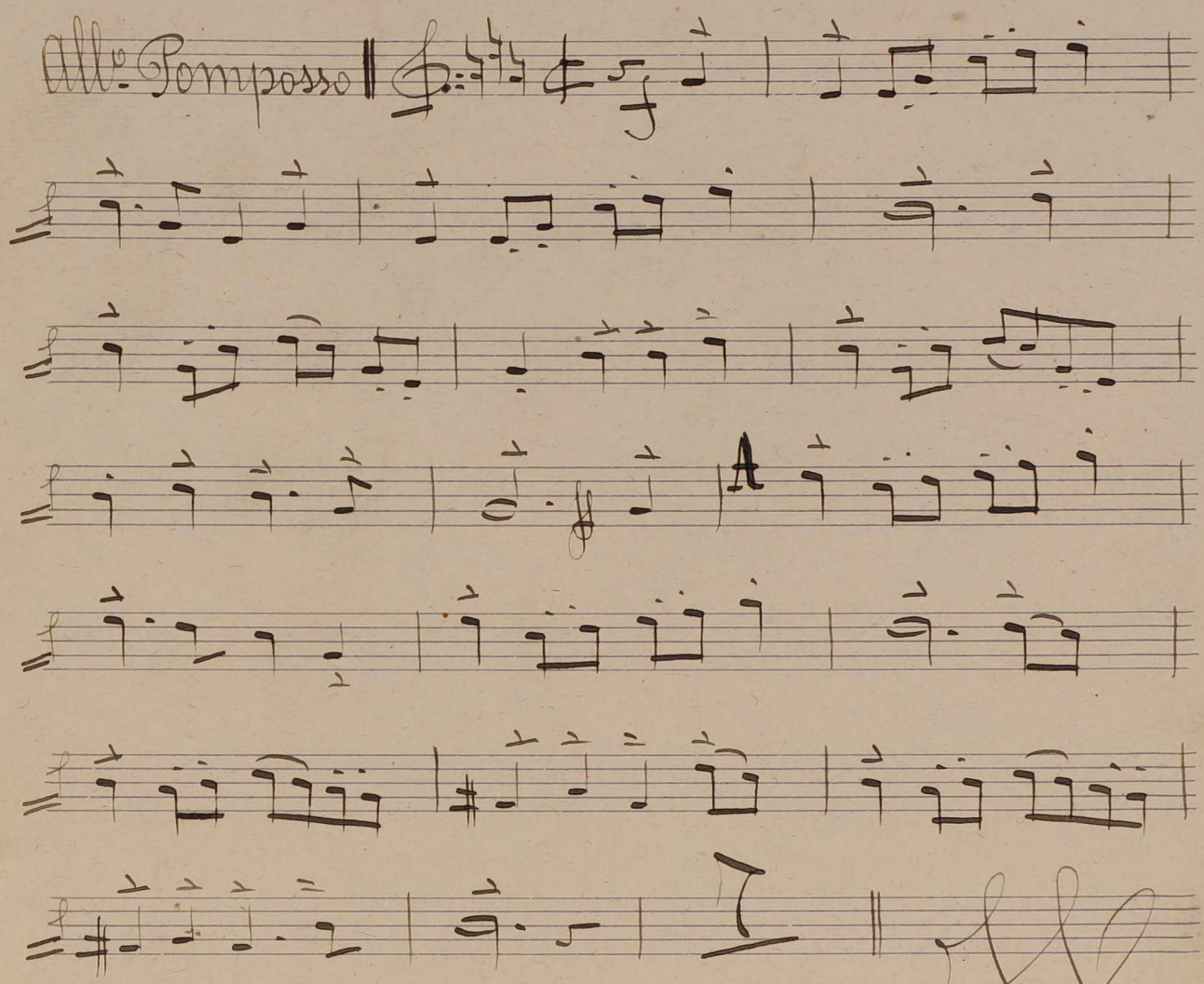
Le Temple de la paix.



Allegretto hasta el Fin.

No. 4. Prelude. Marcha.

Grave | $\text{F}:\flat\flat\ 3/2$ 25 |  | *ataca* Marcha.



This is a handwritten musical score for a piece titled "Les Vents". The score is written on ten staves. The first staff begins with a treble clef, a key signature of one flat (B-flat), and a common time signature (C). The music consists of rhythmic patterns of eighth and sixteenth notes. The fourth staff contains the title "Les Vents" in French, followed by a new key signature of one sharp (F-sharp) and a common time signature (C). Below the title, there are several musical symbols: a large '2' in a box, a treble clef, and various rhythmic notations. The fifth staff features a large '10' in a box, a treble clef, and a large '20' in a box, indicating measure numbers. The rest of the score continues with rhythmic notation on the remaining staves.

