

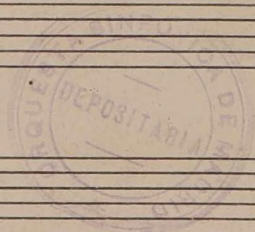
Trombon 2^e

187

Siesta Gaditana.

Intro

Bretón.



No. 1. Bolero.

all: moderato $\text{F}\sharp\text{C}$ $\frac{3}{4}$ *vnuota*

vnuota

eres - - -

5 *Tpo de Bolero* **18** **A**

B

C **23**

D **8** *poco - eres* - - -

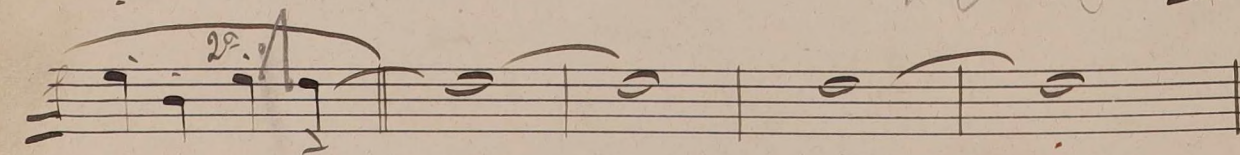
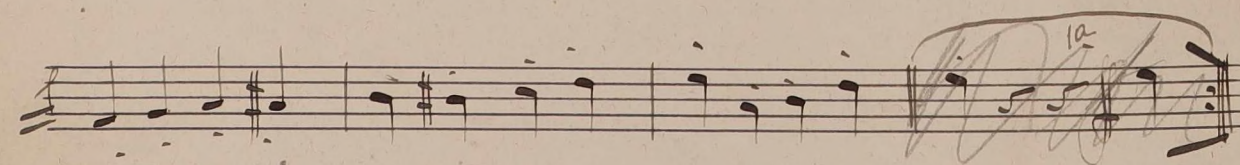
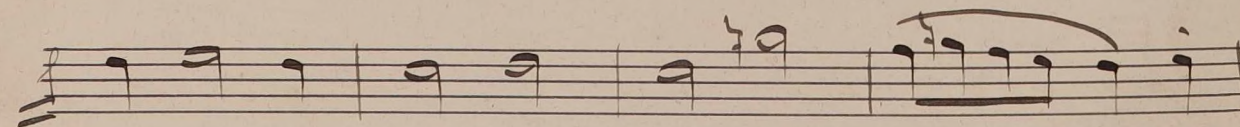
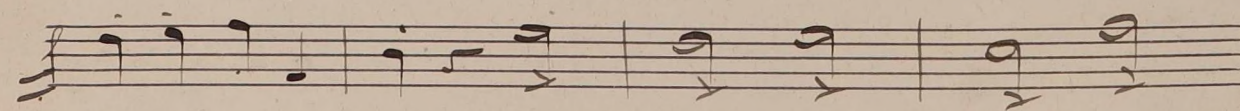
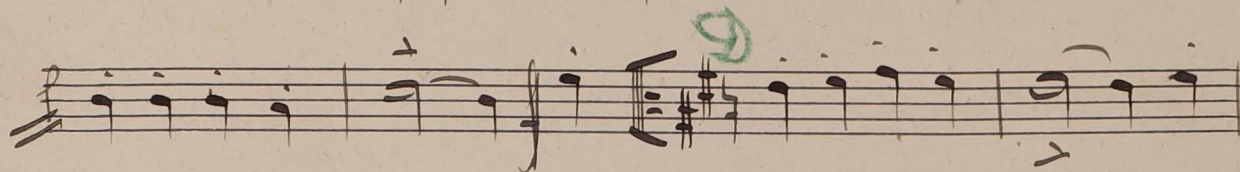
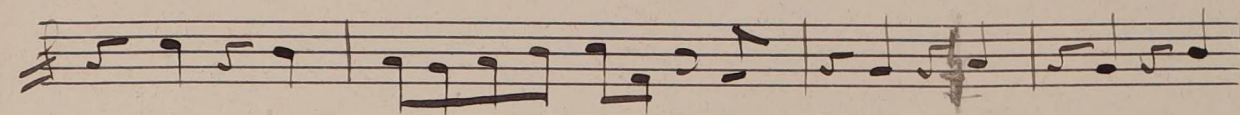
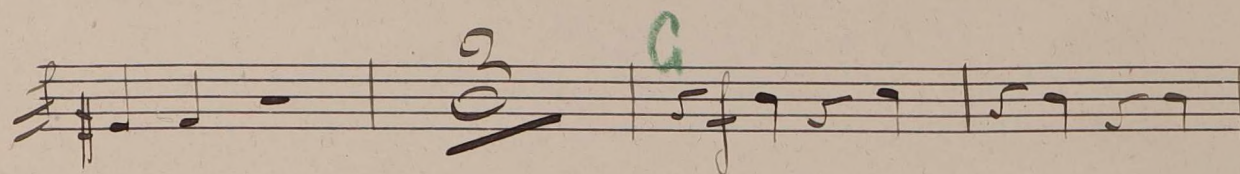
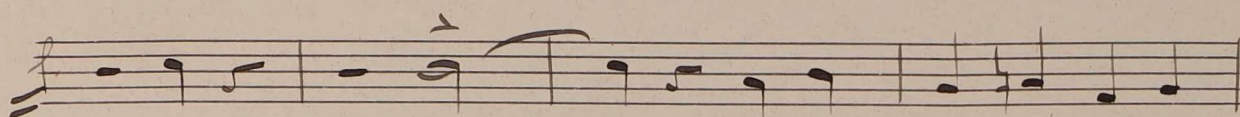
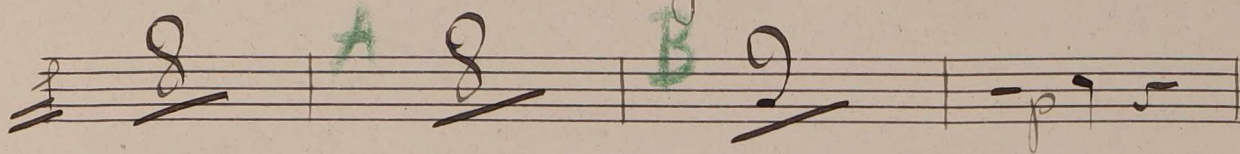
E **2**

Handwritten musical score for a piece titled "No. 2. Facet". The score consists of ten staves of music. The first staff begins with a treble clef, a key signature of one flat (B-flat), and a 2/4 time signature. The tempo is marked "S. Tempo". The second staff is marked "atpno" and contains a green "F" dynamic marking. The third staff has a green "S" dynamic marking. The fourth staff has a green "H" dynamic marking and a "cres-" marking. The fifth staff has a green "I" dynamic marking. The sixth staff has a green "S" dynamic marking. The seventh staff has a "p" dynamic marking and a "cres-" marking. The eighth staff has a green "S" dynamic marking. The ninth staff has a "p" dynamic marking and a "cres-" marking. The tenth staff ends with a double bar line and a sharp sign. The score includes various musical notations such as notes, rests, slurs, and dynamic markings.

No. 2. Facet.

Nº 3. Marcha y Gaeta.

Tempo de Marcha. Magestuoso $\sharp \sharp \sharp \text{C}$



Handwritten musical notation on a five-line staff. It begins with a treble clef and a 2/4 time signature. The music consists of a series of eighth and sixteenth notes, some beamed together. A green letter 'E' is written above the staff. Below the staff, there is a handwritten '22' and the word 'sim'.

Handwritten musical notation on a five-line staff. It starts with a treble clef and a 2/4 time signature. The music features a triplet of eighth notes. A green letter 'F' is written above the staff. Below the staff, there is a handwritten '3' and the word 'sim'.

Handwritten musical notation on a five-line staff. It begins with a treble clef and a 2/4 time signature. The music includes a double bar line followed by the word 'Largo' and a key signature change to two sharps (F# and C#). The notation continues with eighth and sixteenth notes.

Handwritten musical notation on a five-line staff. It starts with a treble clef and a 2/4 time signature. The music features a double bar line followed by the word 'So' and a key signature change to one sharp (F#). The notation continues with eighth and sixteenth notes.

Handwritten musical notation on a five-line staff. It begins with a treble clef and a 2/4 time signature. The music includes a double bar line followed by the word 'Pendentes'. A green letter 'G' is written above the staff.

Handwritten musical notation on a five-line staff. It starts with a treble clef and a 2/4 time signature. The music includes a double bar line followed by the word 'Tempo' and a key signature change to one sharp (F#). The notation continues with eighth and sixteenth notes.

Handwritten musical notation on a five-line staff. It begins with a treble clef and a 2/4 time signature. The music consists of a series of eighth and sixteenth notes.

Handwritten musical notation on a five-line staff. It starts with a treble clef and a 2/4 time signature. The music includes a double bar line followed by the word 'sim'. A green letter 'H' is written above the staff.

Handwritten musical notation on a five-line staff. It begins with a treble clef and a 2/4 time signature. The music consists of a series of eighth and sixteenth notes.

Handwritten musical notation on a five-line staff. It starts with a treble clef and a 2/4 time signature. The music includes a double bar line followed by the word 'sim'.

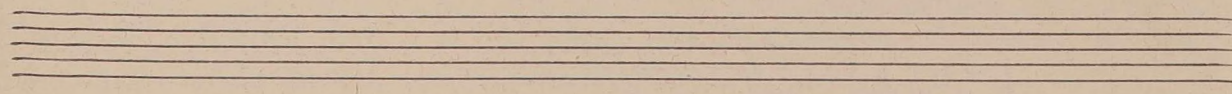
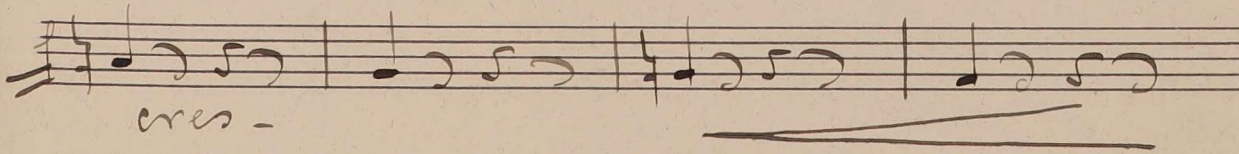
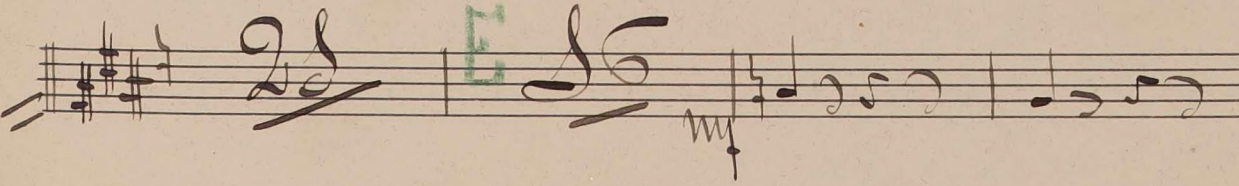
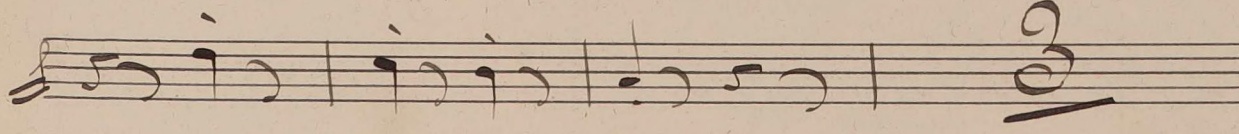
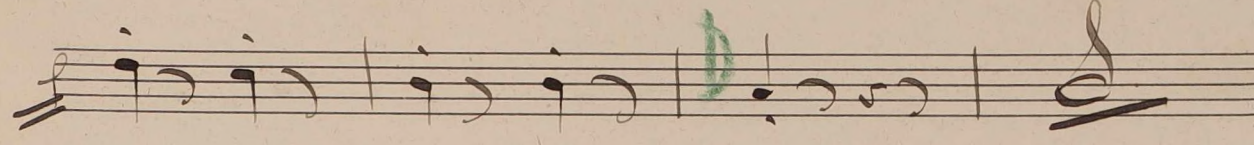
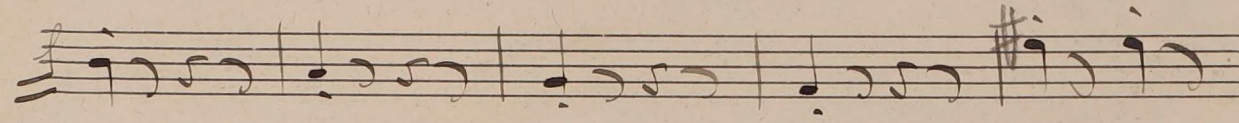
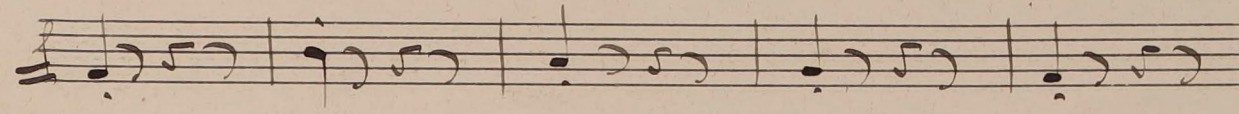
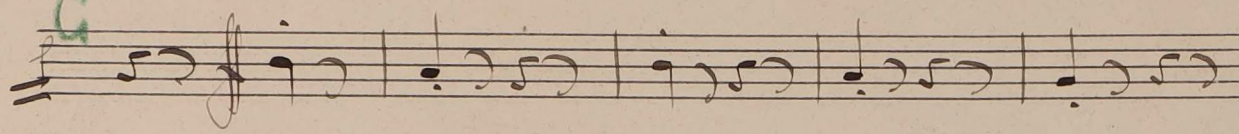
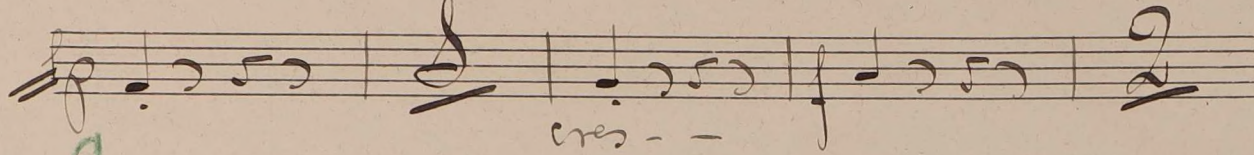
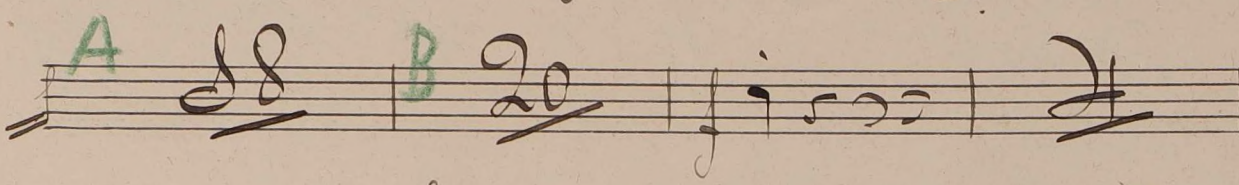
Handwritten musical notation on a five-line staff. It begins with a treble clef and a 2/4 time signature. The music includes a double bar line followed by the number '17' and a key signature change to one sharp (F#). A green letter 'I' is written above the staff.

Handwritten musical notation on a five-line staff. It starts with a treble clef and a 2/4 time signature. The music includes a double bar line followed by a key signature change to one sharp (F#).

No. 2 Kapateado.

alle-molto. $\sharp\sharp\sharp$ $\frac{6}{8}$ 23

A 28 **B** 20



F

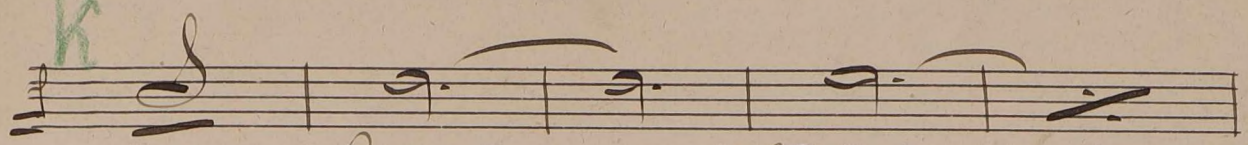
8

H **25** **18**

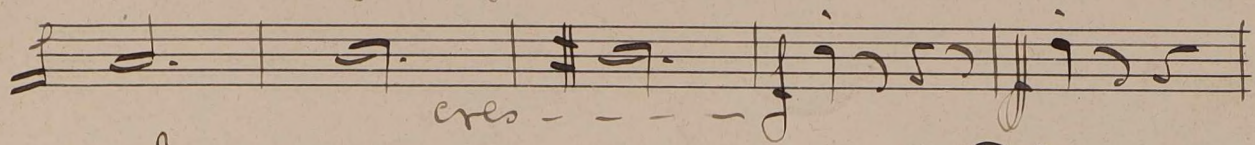
cres

3

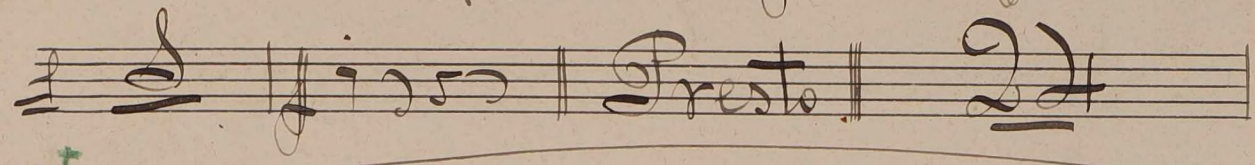
K



po p. - - - cres - - -



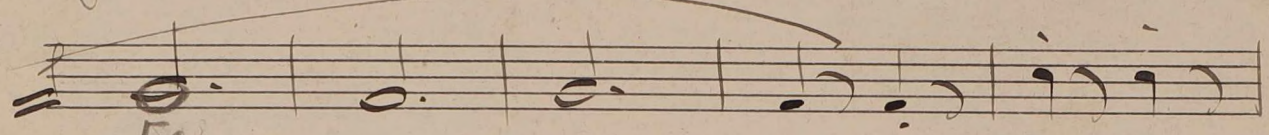
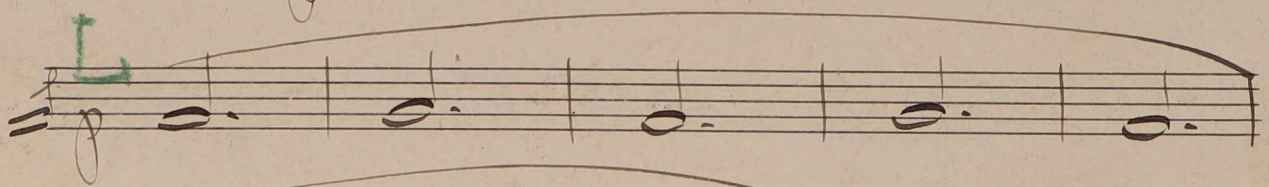
cres - - -



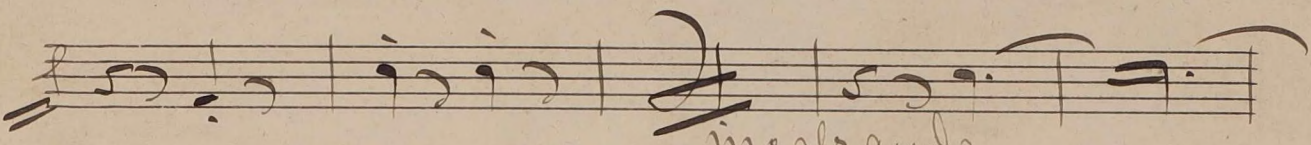
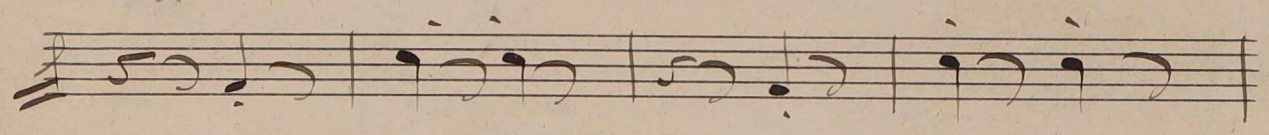
Presto

24

L



FA



in crescendo

