

Trompa 3^a

=112

Cleopatra

overtura



Mancinelli

En Fa

A *Marcato*

b b

Handwritten musical notation on a five-line staff. It begins with a treble clef, a key signature of two flats (B-flat and E-flat), and a common time signature (C). The first measure contains a whole note chord consisting of a G4, a B-flat4, and an E-flat4. A red vertical line is drawn through the first measure. The second measure contains a whole note G4. The third measure contains a whole note B-flat4. The fourth measure contains a whole note E-flat4.

Handwritten musical notation on a five-line staff. It contains a sequence of notes: G4, A4, B-flat4, C5, B-flat4, A4, G4.

Handwritten musical notation on a five-line staff. It contains a sequence of notes: G4, A4, B-flat4, C5, B-flat4, A4, G4.

Handwritten musical notation on a five-line staff. It contains a sequence of notes: G4, A4, B-flat4, C5, B-flat4, A4, G4.

Handwritten musical notation on a five-line staff. It contains a sequence of notes: G4, A4, B-flat4, C5, B-flat4, A4, G4.

Handwritten musical notation on a five-line staff. It contains a sequence of notes: G4, A4, B-flat4, C5, B-flat4, A4, G4.

Handwritten musical notation on a five-line staff. It contains a sequence of notes: G4, A4, B-flat4, C5, B-flat4, A4, G4.

Handwritten musical notation on a five-line staff. It contains a sequence of notes: G4, A4, B-flat4, C5, B-flat4, A4, G4.

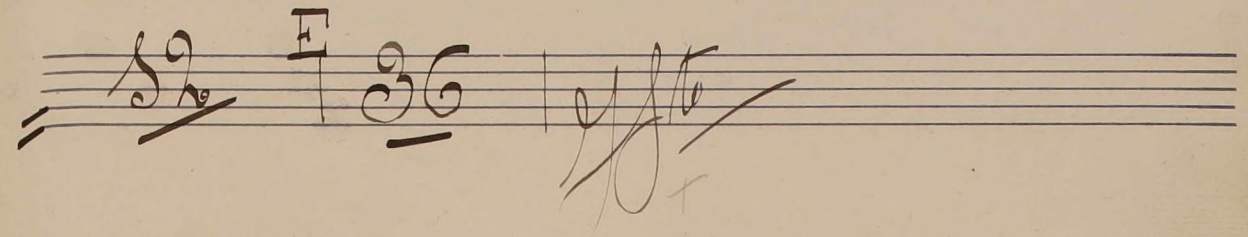
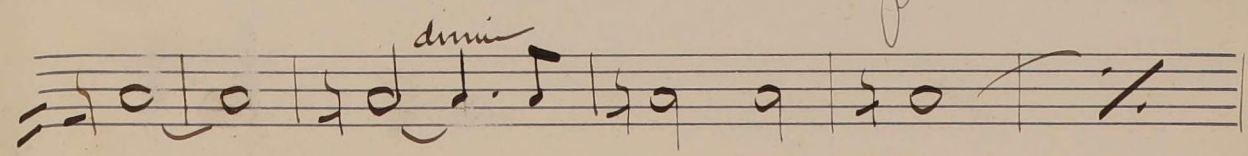
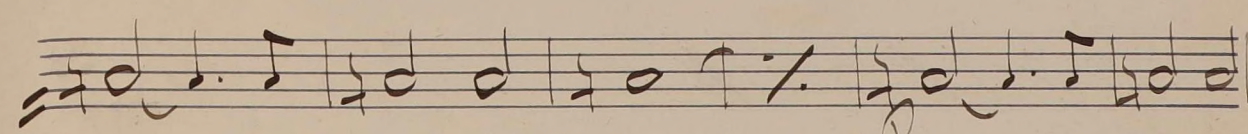
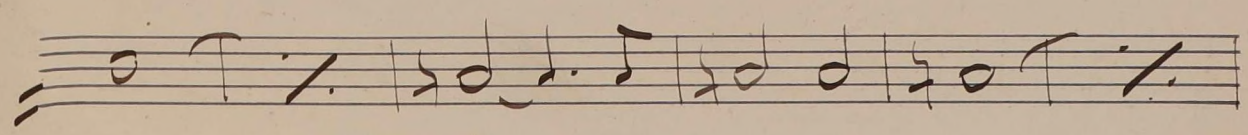
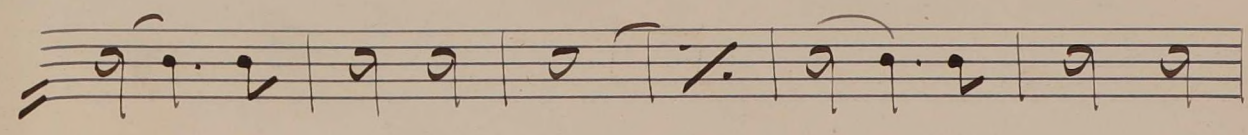
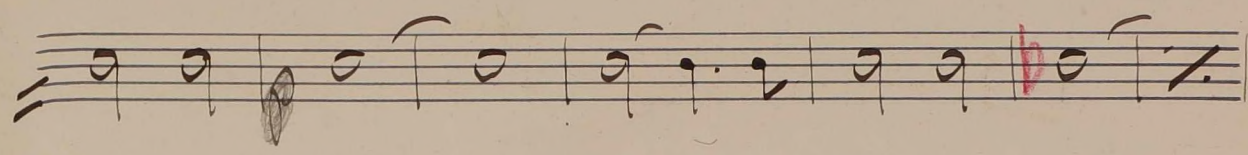
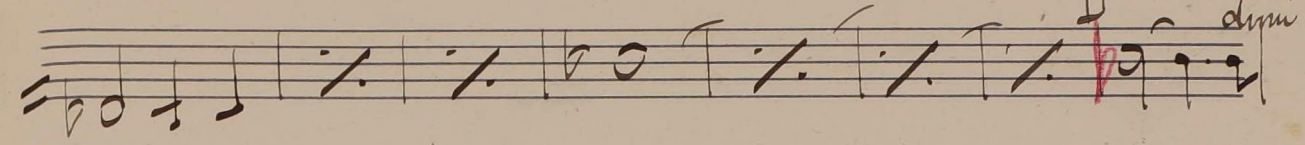
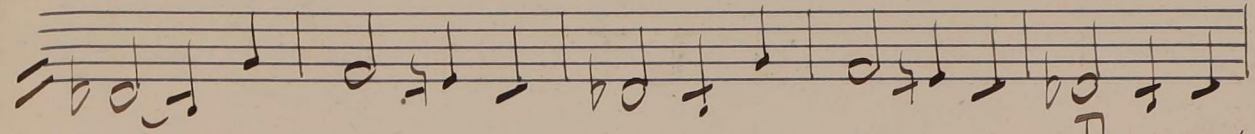
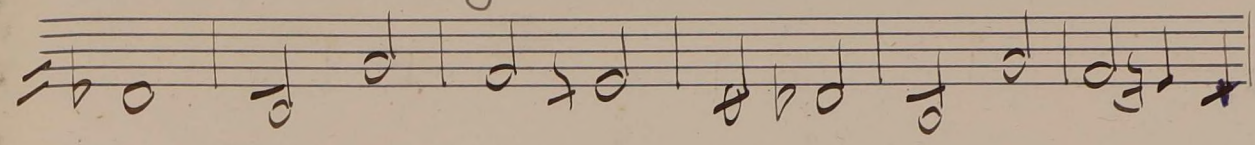
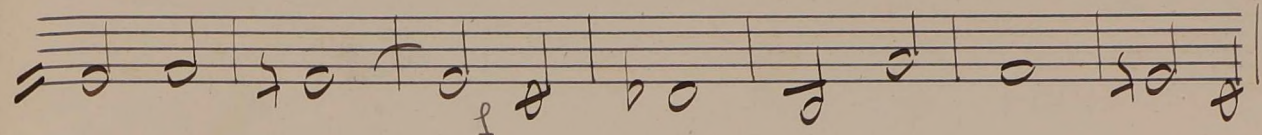
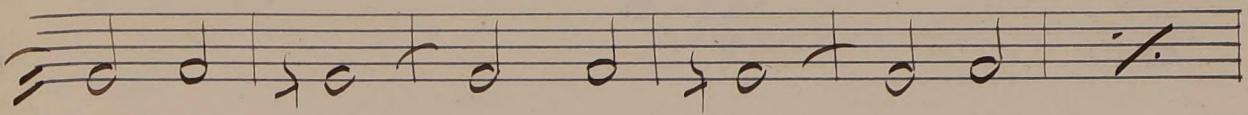
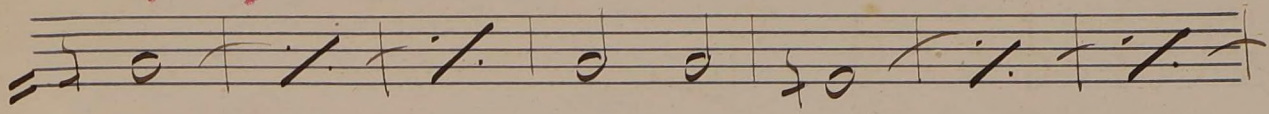
Handwritten musical notation on a five-line staff. It contains a sequence of notes: G4, A4, B-flat4, C5, B-flat4, A4, G4. A red handwritten note "(ojopp)" is written above the staff, and a red scribble is written below it.

Handwritten musical notation on a five-line staff. It contains a sequence of notes: G4, A4, B-flat4, C5, B-flat4, A4, G4.

Handwritten musical notation on a five-line staff. It contains a sequence of notes: G4, A4, B-flat4, C5, B-flat4, A4, G4.

Handwritten musical notation on a five-line staff. It contains a sequence of notes: G4, A4, B-flat4, C5, B-flat4, A4, G4.

999



12
36

1 2 3 4 5 6 7 8 9 10 HL

Handwritten musical staff with notes and fingerings 1, 2, 4, 5, 6, 7, 1, 2.

Handwritten musical staff with notes and fingerings 1, 2, 4, 5, 6, 1, 2.

Handwritten musical staff with notes and fingerings 1, 2, 4, 5, 6, 7, 8, 9, 10.

Handwritten musical staff with notes and fingerings 1, 2, 3, 4, 5, 6, 7.

Handwritten musical staff with notes and a 'M' marking.

Handwritten musical staff with notes.

Handwritten musical staff with notes.

Handwritten musical staff with notes.

Handwritten musical staff with notes.

Handwritten musical staff with notes.

Handwritten musical staff with notes and a signature.

Empty musical staff.