



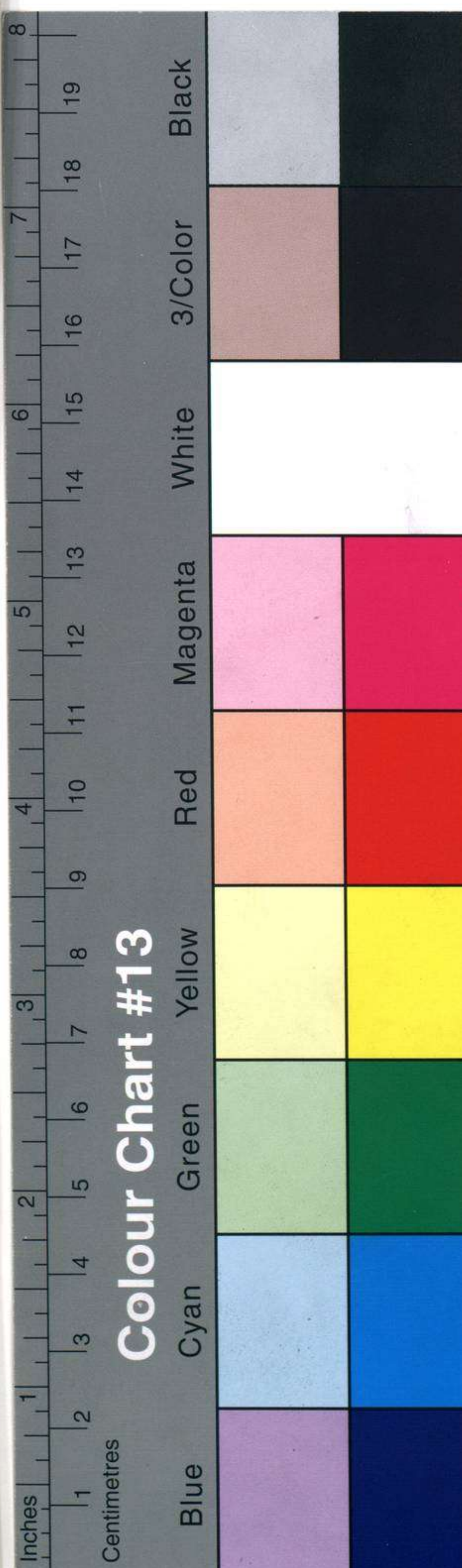
AN ACTUAL
 TOPOGRAPHICAL
 SURVEY
 OF THE
 ENVIRONS
 OF
KE SWICK.
 BY
THO: DONALD
 Surveyor.

Latitude of Keswick $54^{\circ} 32' 4''$ North.
 Longitude of D^o $3^{\circ} 1'$ West

Published according to Act of Parliament Jan^y 29th 1830, by W^m Faden
 Geographer to His Majesty, Charing Cross, London.

Furlongs 0 1 2 3 4 Miles

Engraved by John Haywood
 No 7, Ludlow Ave.



Colour Chart #13