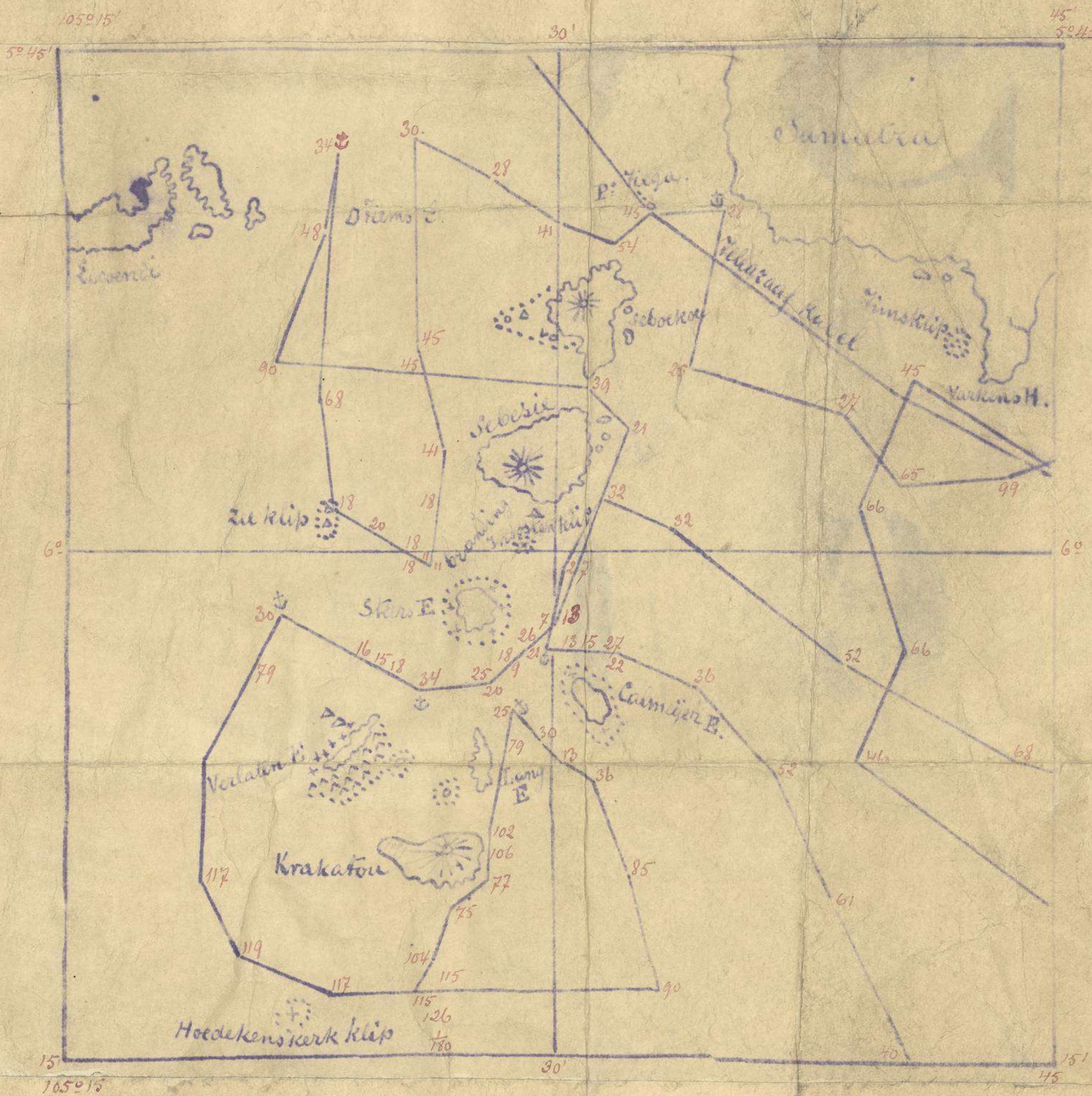


Map of the Straits of Santa Blommestein 1823
 Provisional examination - Depth in meters - Survey
 will follow? - Navigable passage through the Straits
 East of Krakaton unchanged.



Light of Java head and "vlakte hoek" in good
 order - On the 4th point (vande punts) a temporary
 light of the 6th order will be visible by middle of
 October, at 2 1/2 miles (germ. geogr.)

Batavia 13 September 1823

Chief of Hydrographer's Dept
 signed: Edsmay.

for true copy
 & translations
 Yokohama 4 October 1883

Yonvande Polder.
 Surveyor G.N.N.'s Dept.



2905

21

MAPA DE LOS ESTRECHOS DE LA SONDA, RECONOCI -
MIENTO PROVISIONAL, PROFUNDIDADES EN METROS, EL
LEVANTAMIENTO SEGUIRÁ, LOS PASOS NAVEGABLES DE -
LOS ESTRECHOS AL LESTE DE KRAKATOA NO HAN CAMBIA -
DO.

LA LUZ DE JAVA EN BUEN ESTADO.

FIRMADO, 13 SEP. 1883. EDELING.



MUSEO NAVAL

Catalogación de cartas.

1942.

INVENTARIO
SIGNATURA

2618

86-27

F. 287-225-644.1000

86-27