



Fougère. (Polypode).

Cordons vasculaires

Sclérenchyme



Sclérenchyme

Cordons vasculaires

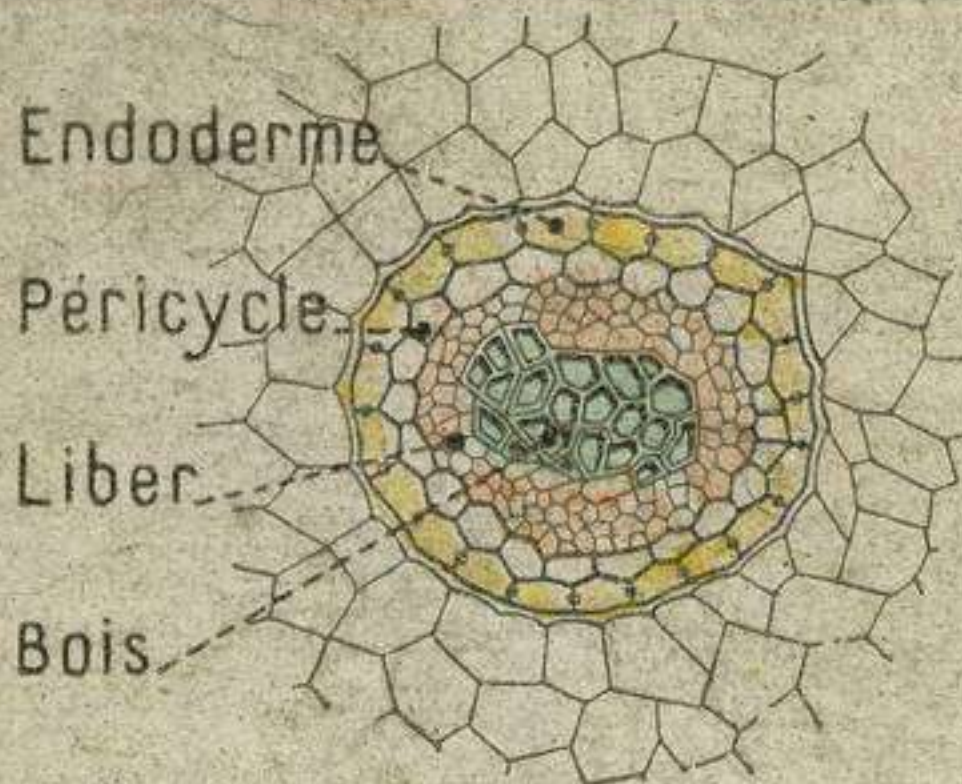
A

B

Coupes transversales  
de tiges de fougère

2

E. MAZO. PARIS



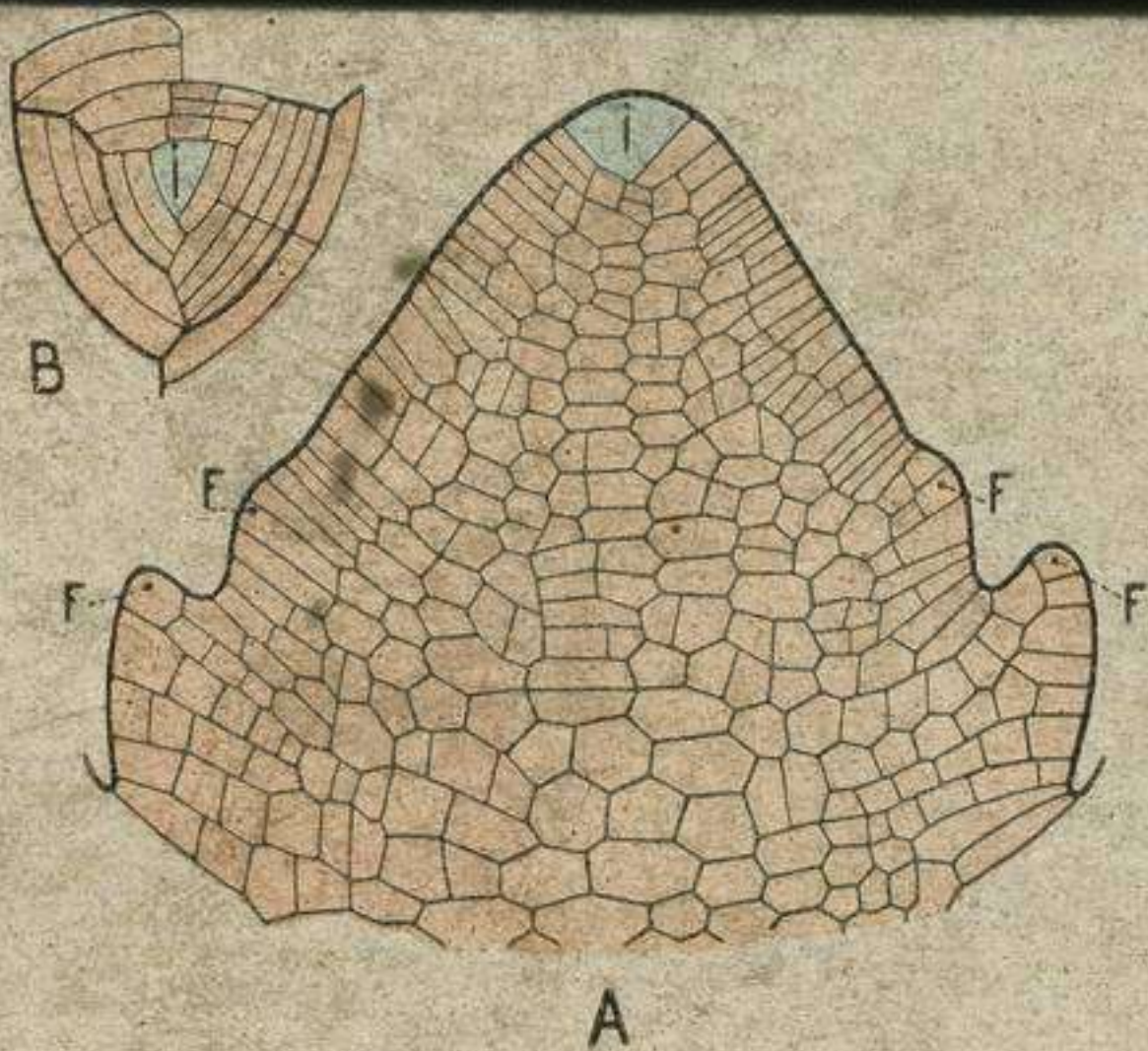
Endoderme  
Péricycle  
Liber  
Bois



*Vaisseaux  
scalariformes.*

Cordon vasculaire  
d'une tige de Fougère.

3



Croissance d'une tige de Fougère

4

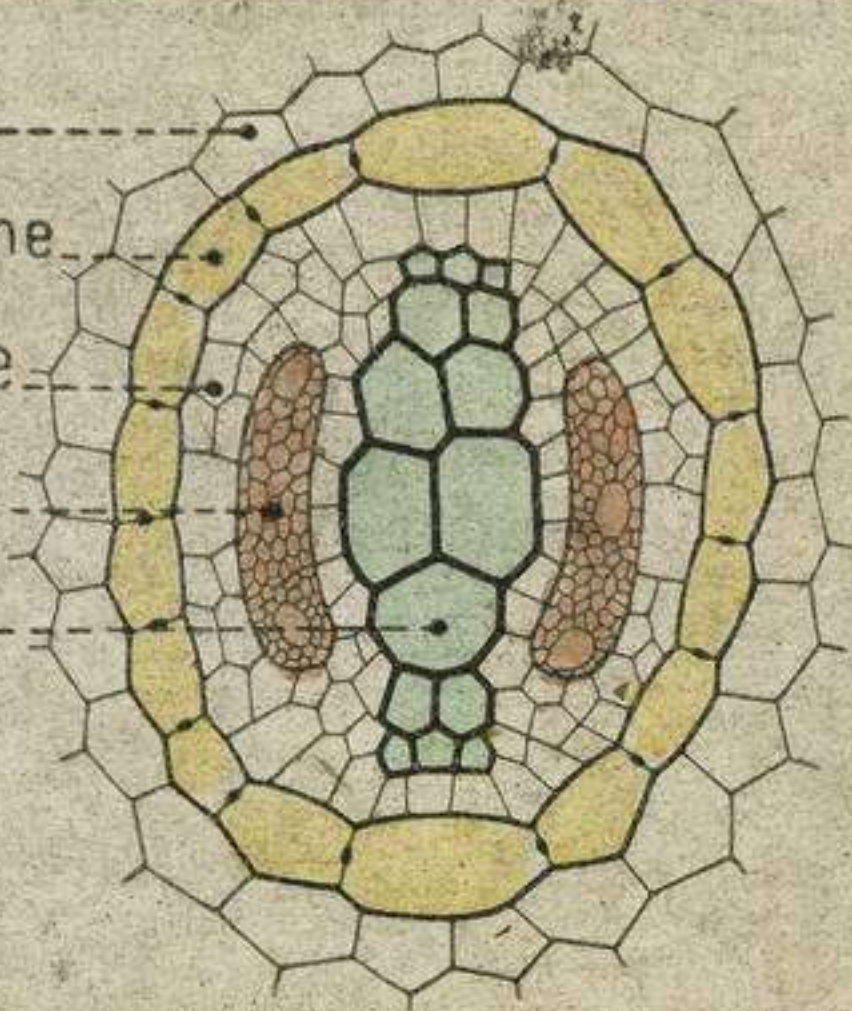
Ecorce.....

Endoderme.....

Péricycle.....

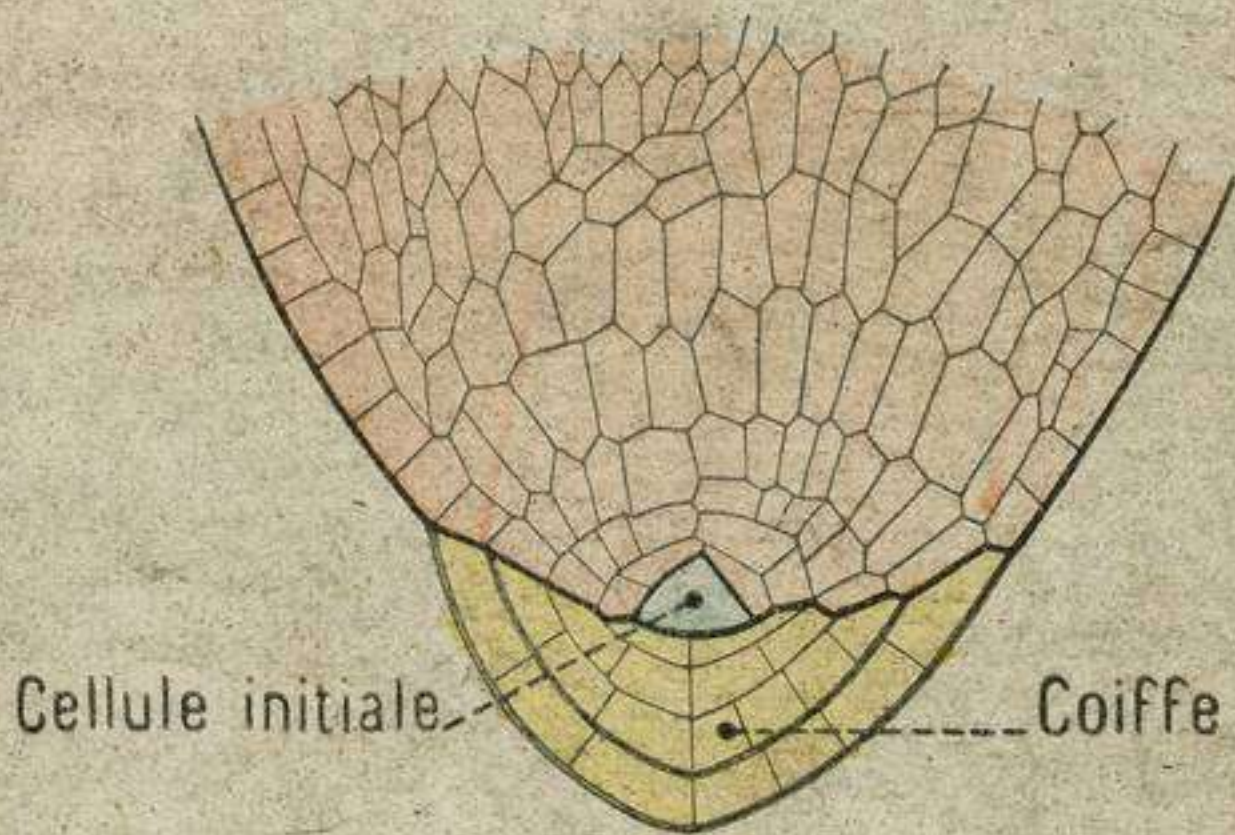
Liber.....

Bois.....



Cylindre central  
d'une racine de fougère. (Coupe tran<sup>le</sup>).

5



Sommet d'une racine. (Coupe longitud<sup>le</sup>).

6

A



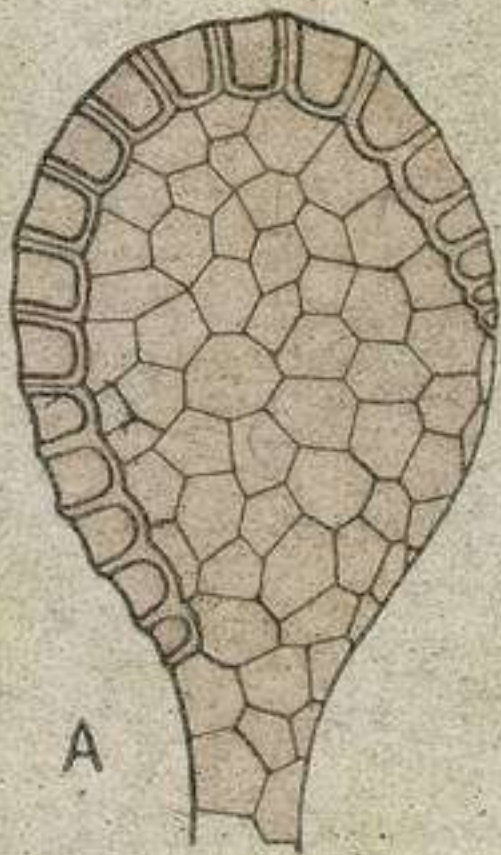
B



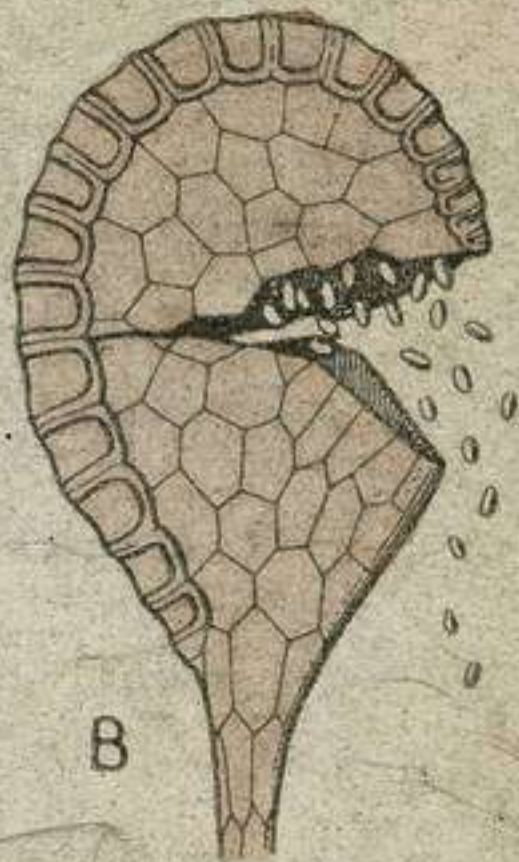
C

Sores de fougère

7



A

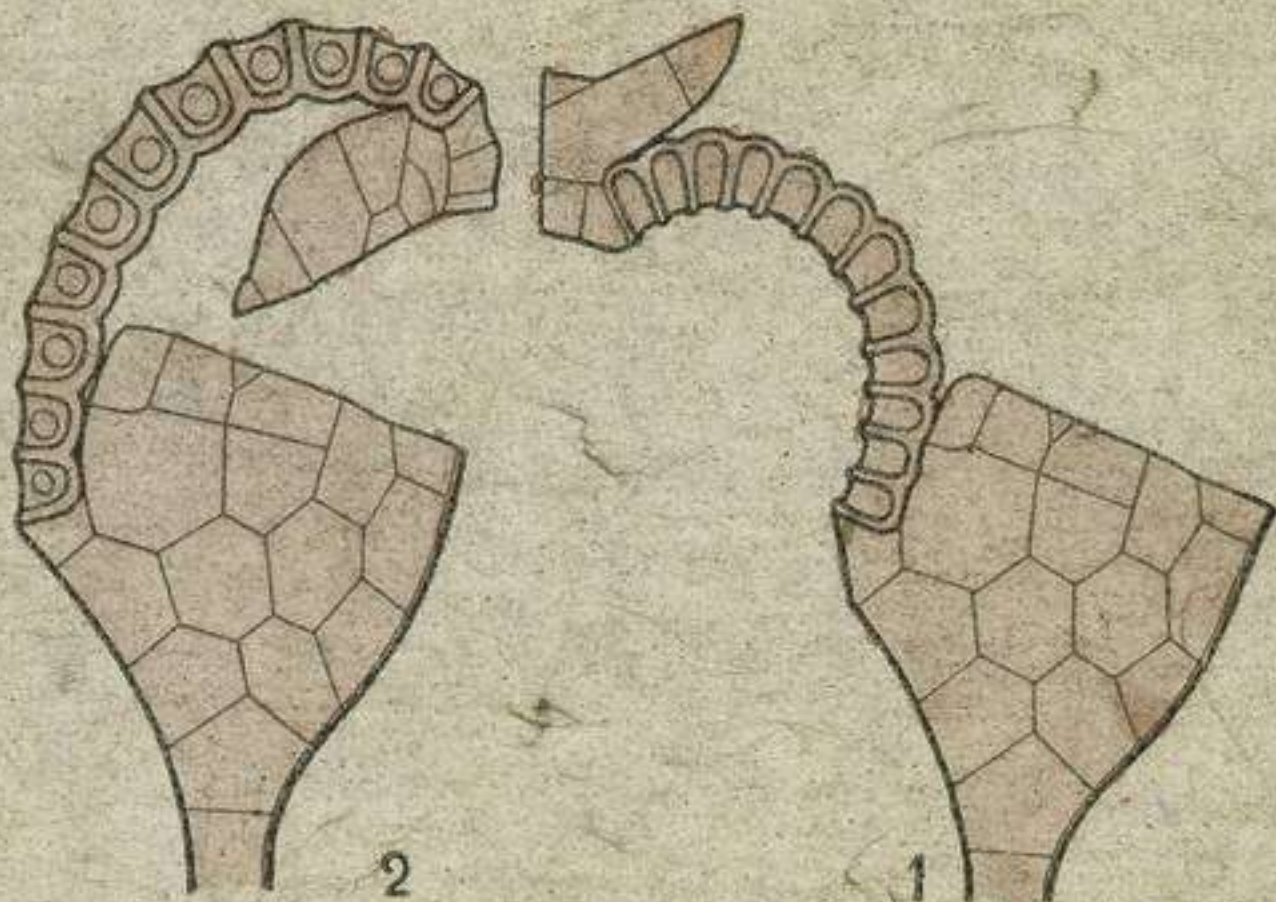


B

Sporange de fougère.

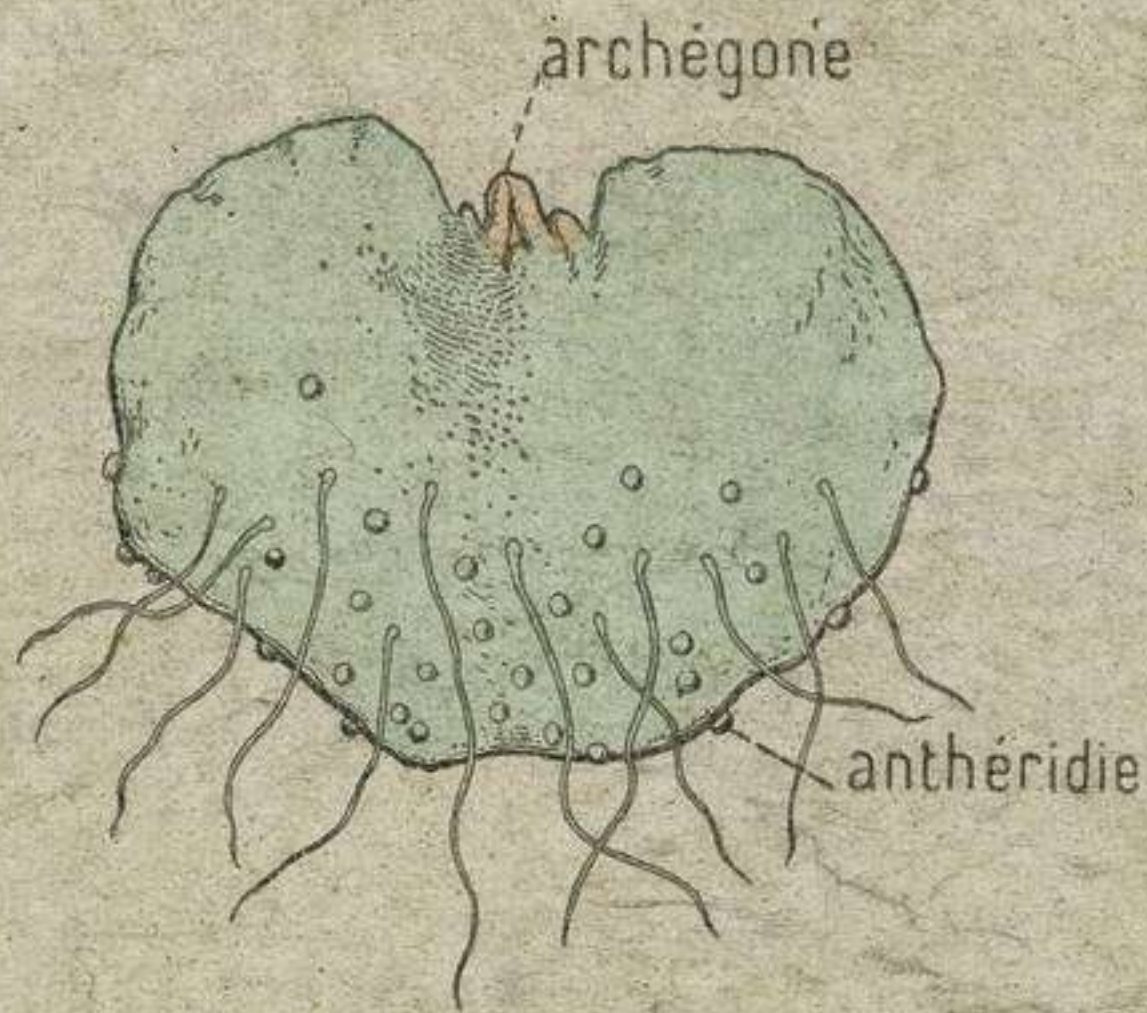
8





Déhiscence d'un sporange.

9



Un prothalle de fougère

10

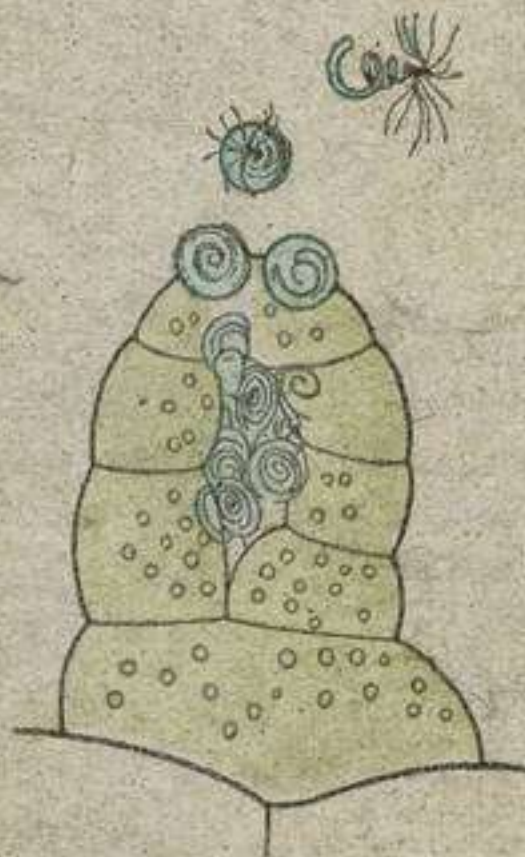
DE FONGIFERIS

Anthelidie

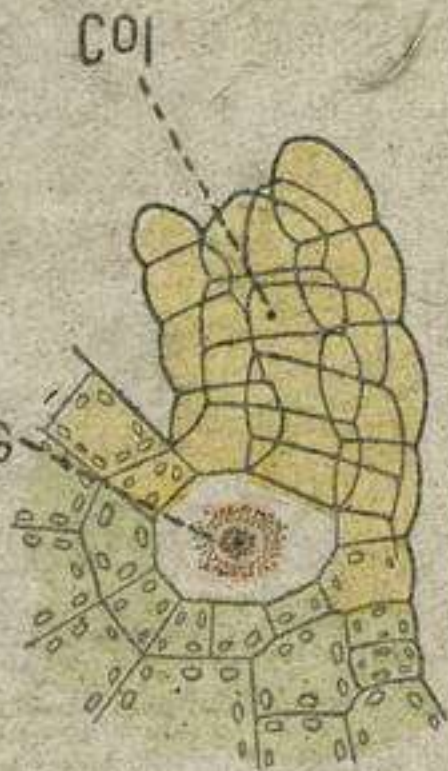
Archegonia

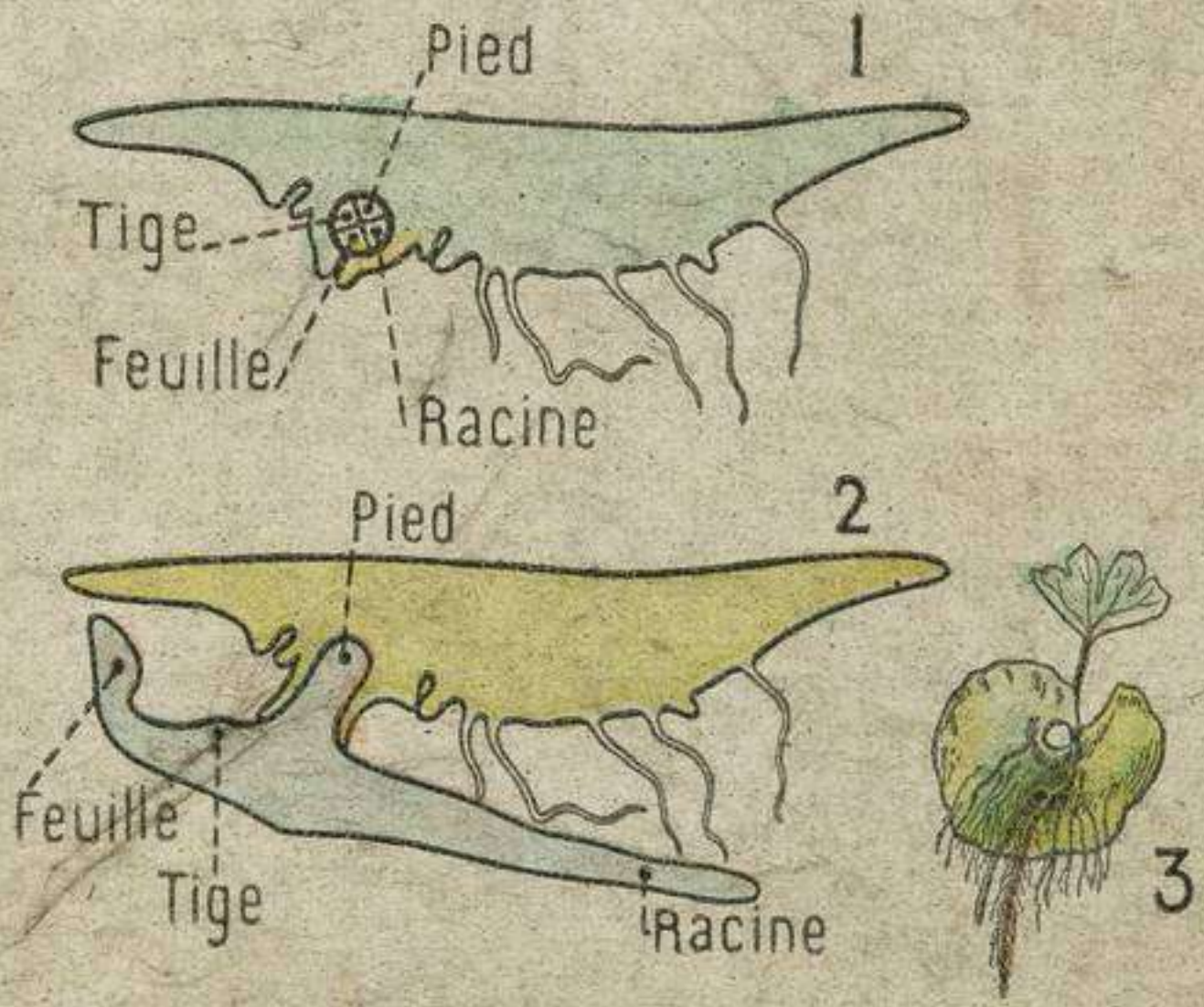
A

B



Oospores





Développement de l'œuf.