

1

Cello

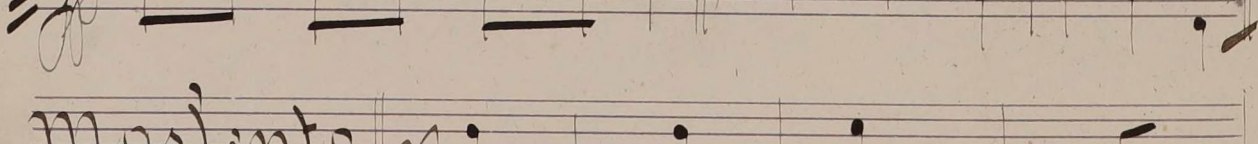
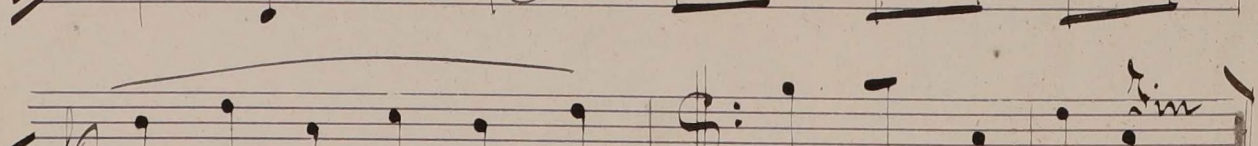
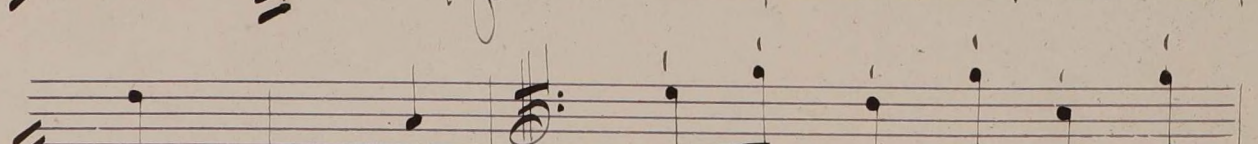
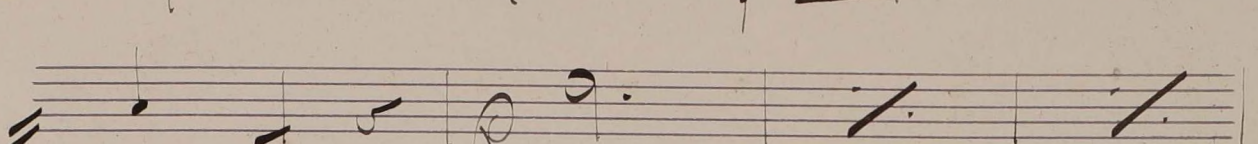
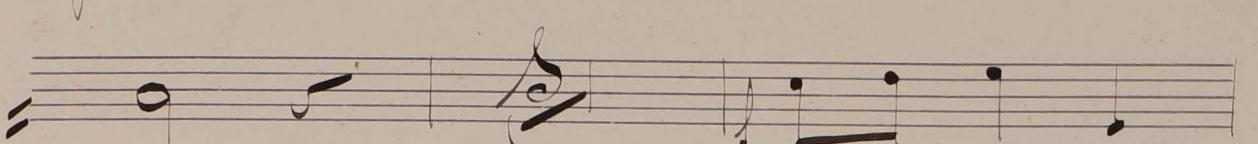
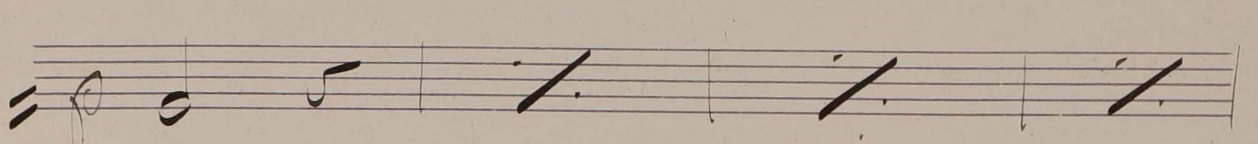
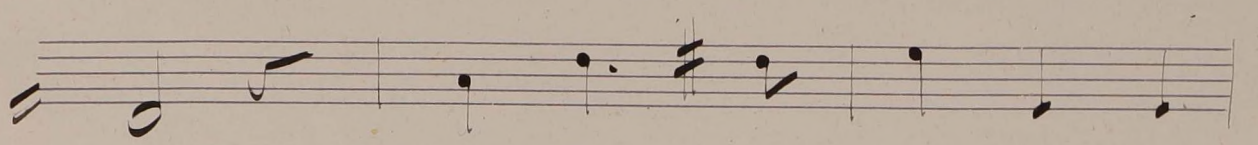
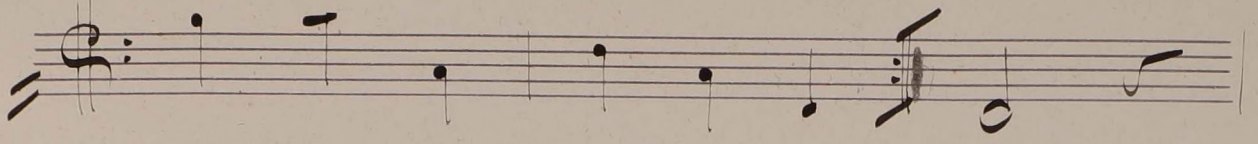
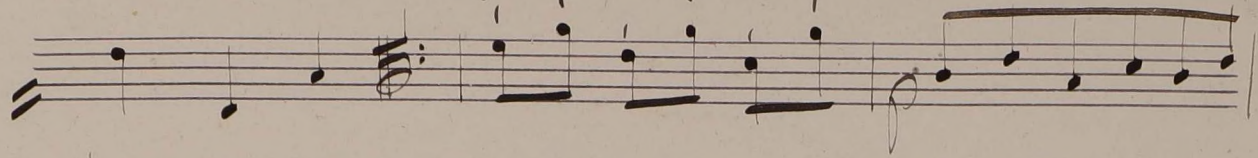


--66

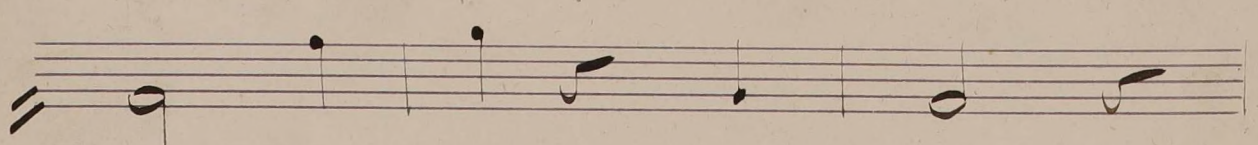
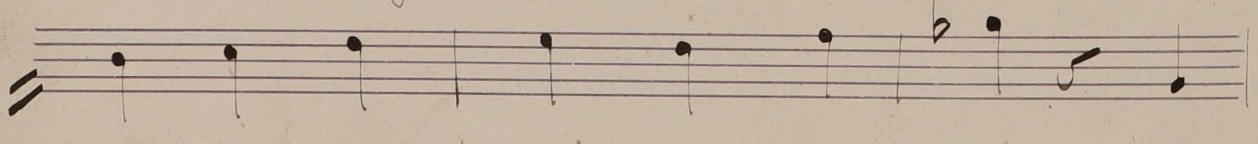
Minuetto "Orfeo",

Gluk

And^{no} *G* *3*



Mas linto *pp*



Handwritten musical score consisting of ten staves. The notation includes various note values (quarter, eighth, and sixteenth notes), rests, and accidentals (sharps). The first nine staves contain the main body of the piece, with some staves featuring slurs and dynamic markings. The tenth staff begins with a double bar line and the instruction "D.C. sin repetit" written in cursive. Below this staff are four empty staves.