

5

OBOE 2<sup>do</sup>

Orquesta Sinfónica de Madrid

Número 296

LA FETE DIEU A SEVILLE

ALBENIZ ARBOS



Oboe 2<sup>o</sup>

La Fête d'au a. Seville =

All<sup>o</sup> grazioso ||  $\text{F}\#\#\text{C}$   $\frac{2}{4}$  2.5 <sup>A</sup>  $\text{pp}$   $\text{mf}$   $\text{mf}$

$\text{F}\#\#\text{C}$   $\text{mf}$   $\text{mf}$   $\text{mf}$   $\text{mf}$   $\text{mf}$

$\text{F}\#\#\text{C}$   $\text{p}$   $\text{mf}$   $\text{mf}$   $\text{mf}$   $\text{mf}$

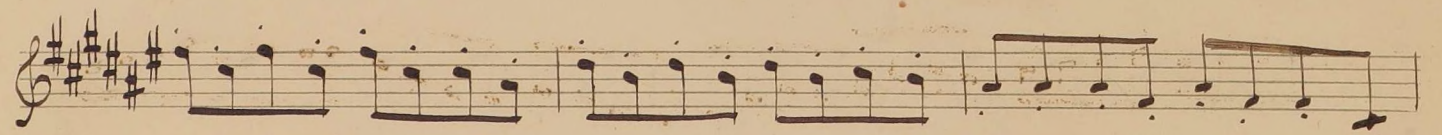
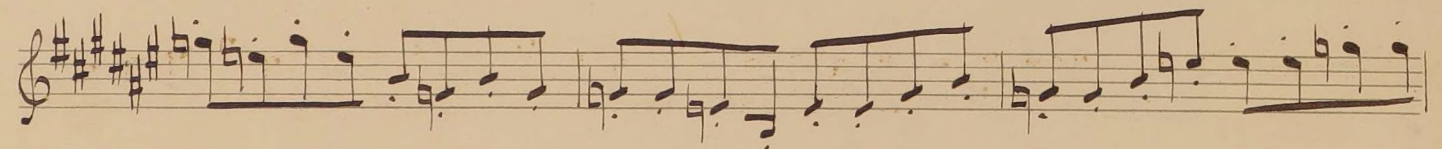
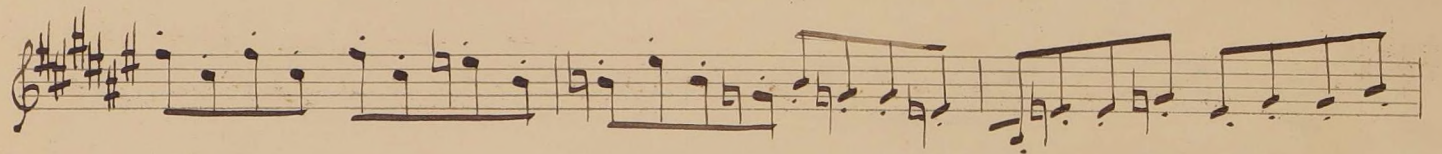
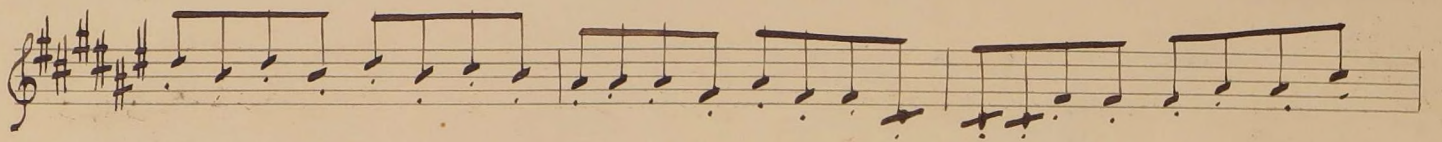
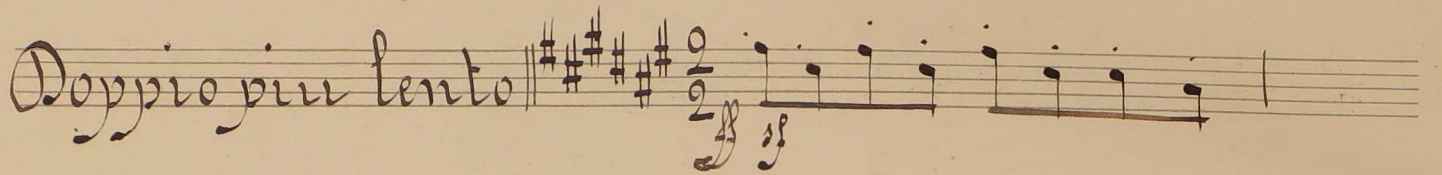
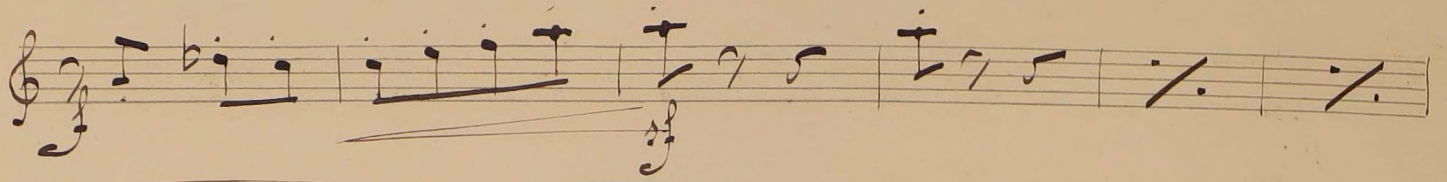
$\text{F}\#\#\text{C}$  <sup>B</sup>  $\text{p}$   $\text{mf}$   $\text{mf}$   $\text{mf}$   $\text{mf}$   $\text{mf}$   $\text{mf}$

$\text{F}\#\#\text{C}$   $\text{mf}$   $\text{mf}$   $\text{mf}$   $\text{mf}$   $\text{mf}$   $\text{mf}$   $\text{mf}$

$\text{F}\#\#\text{C}$   $\text{mf}$   $\text{mf}$   $\text{mf}$   $\text{mf}$   $\text{mf}$   $\text{mf}$   $\text{mf}$   $\text{mf}$   $\text{mf}$

$\text{F}\#\#\text{C}$  <sup>C</sup>  $\text{mf}$   $\text{mf}$   $\text{mf}$   $\text{mf}$   $\text{mf}$   $\text{mf}$   $\text{mf}$   $\text{mf}$   $\text{mf}$

$\text{F}\#\#\text{C}$   $\text{mf}$   $\text{mf}$   $\text{mf}$   $\text{mf}$   $\text{mf}$   $\text{mf}$   $\text{mf}$   $\text{mf}$   $\text{mf}$



Plus calme

*p* Più lento - **E** *pp* *ritard* *lento*

**8** *pp* *tempo 1°*

*cres* *mf*

**F**

*ti*

**G**

*cres* *Poco lento*

*segno*

**H** *tempo 1°*

Musical notation, first staff, treble clef, key signature of three sharps (F#, C#, G#), time signature of 3/4. The staff contains a series of quarter notes and eighth notes. A Roman numeral 'I' is written above the staff.

Musical notation, second staff, treble clef, key signature of three sharps. The staff contains a series of quarter notes and eighth notes with accents.

Musical notation, third staff, treble clef, key signature of three sharps. The staff contains a series of quarter notes and eighth notes. Roman numerals 'J', 'K', '1', and '6' are written above the staff.

Musical notation, fourth staff, treble clef, key signature of three sharps. The staff contains a series of quarter notes and eighth notes with accents and dynamic markings.

Musical notation, fifth staff, treble clef, key signature of three sharps. The staff contains a series of quarter notes and eighth notes with accents and dynamic markings.

Musical notation, sixth staff, treble clef, key signature of three sharps. The staff contains a series of quarter notes and eighth notes with accents and dynamic markings. Roman numeral 'M' is written above the staff.

Musical notation, seventh staff, treble clef, key signature of three sharps. The staff contains a series of quarter notes and eighth notes. Dynamic markings *p*, *cres*, *molto*, *ritar*, and *e* are written below the staff.

Musical notation, eighth staff, treble clef, key signature of three sharps. The staff contains a series of quarter notes and eighth notes. The word *pesante* is written below the staff, and *vivo* is written above the staff. A dynamic marking *fff* is written below the staff.

Musical notation, ninth staff, treble clef, key signature of three sharps. The staff contains a series of quarter notes and eighth notes with dynamic markings.

Musical notation, tenth staff, treble clef, key signature of three sharps. The staff contains a series of quarter notes and eighth notes with dynamic markings.

Musical notation on a single staff, treble clef, key signature of three sharps (F#, C#, G#), and common time. The piece begins with a dynamic marking of *N* (Niente) and features a series of eighth notes with accents.

Musical notation on a single staff, treble clef, key signature of three sharps, and common time. The piece continues with eighth notes and accents.

Musical notation on a single staff, treble clef, key signature of three sharps, and common time. The piece continues with eighth notes and accents, ending with a dynamic marking of *0*.

Musical notation on a single staff, treble clef, key signature of three sharps, and common time. The piece continues with dotted eighth notes and accents.

Musical notation on a single staff, treble clef, key signature of three sharps, and common time. The piece continues with eighth notes and accents, ending with a dynamic marking of *P* (Piano). Handwritten annotations include *mf* and *cres molto*.

Musical notation on a single staff, treble clef, key signature of three sharps, and common time. The piece continues with dotted eighth notes and accents.

Handwritten musical notation: *Andte* followed by a key signature of three sharps, a common time signature, a repeat sign, and a first ending bracket labeled *10* with a *Q* above it. This is followed by a second ending bracket labeled *10* with an *R* above it, and a final double bar line with a sharp sign.

Three empty musical staves for notation.