

13

1^{ra}
TROMPETA

Orquesta Sinfónica de Madrid

Número 20

LEONORA OVERTURA N° 3

BEETHOVEN



Ouverture Nr.3 zur Oper Leonore (Fidelio).

L. van Beethoven, Op. 72.

Tromba I.

in C. ↓
Allegro.

25

2

a 6

ff fff ff f f f

Allegro.

28 *mf* *sempre ff* *mf*

1 1

fp

3

1 2 3 4 5 6

p *f* *p* *f*

5 16 B 74 C 3

ff *ff* *p*

8 4 12

ff *ff* *ff*

11 D 2 4

ff *p* *f*

8 Tromba in B auf dem Theater.
Solo

ff

Tempo I. 16 Tromba auf dem Theater.
Solo.

Tempo I. E 70

in C. 53

Tromba I.

p cresc. *ff* *sempre ff* **F**

sf

sf sf sf sf sf sf sf

G **47** **H** *ff* **54** **Presto.** **Viol. I.** **18** **13**

ff

I **23** *ff* **15**

1 **2** **3** **4** **5** **6** **7** **8**

K *f* *fff* **16**

1 **1** **1** **1** **1**

Trompeta en Do.

Leonora Nº3. = Obertura. (Interno)

8

Cuerda

Madera

Adagio Trompeta Solo

Allegro

mf

poco rit

16

Solo Adagio

Allegro

ff

Poco rit...

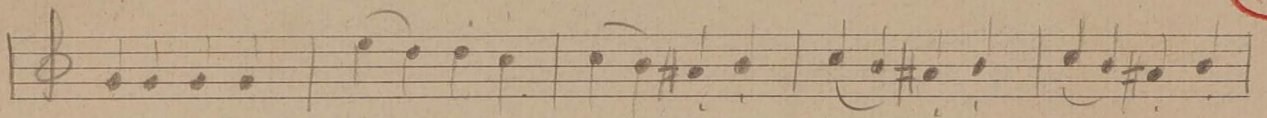
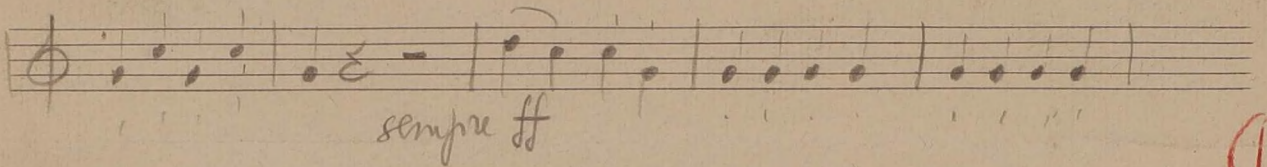
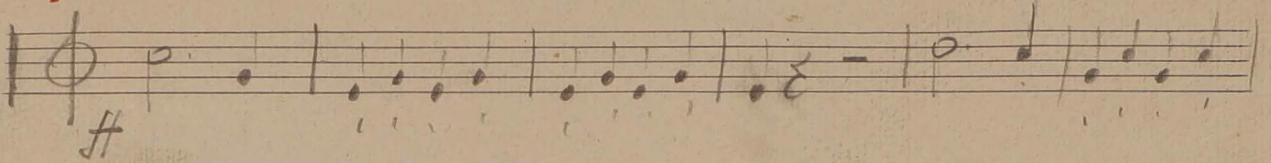
erquera 1959

Leonore N. 3

La Tromba

in F

I



14