



M.E.C.D. 2015



EXCMA. DIPUTACION PROVINCIAL



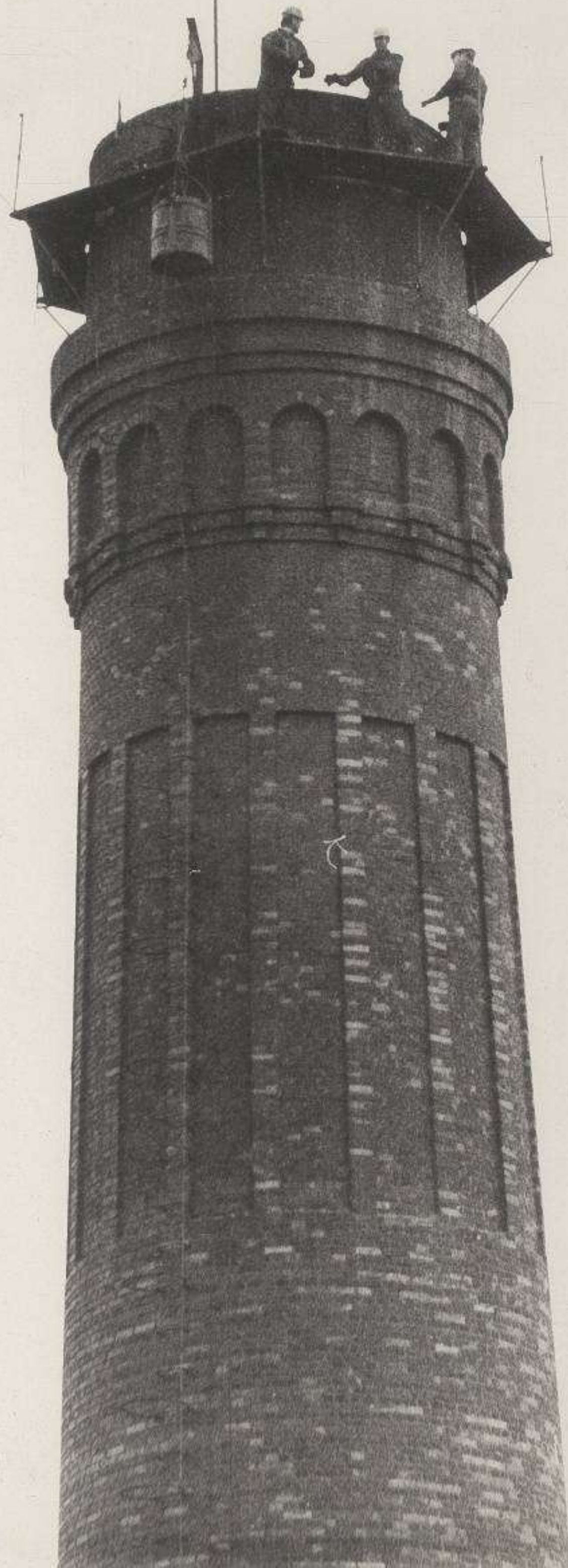
El Oriente de Asturias
IMPRESA REDACCION Y ADMINISTRACION

FORO ASESORIA
GESTORIA

P

S-47974











HOSPITAL PSIQUIATRICO

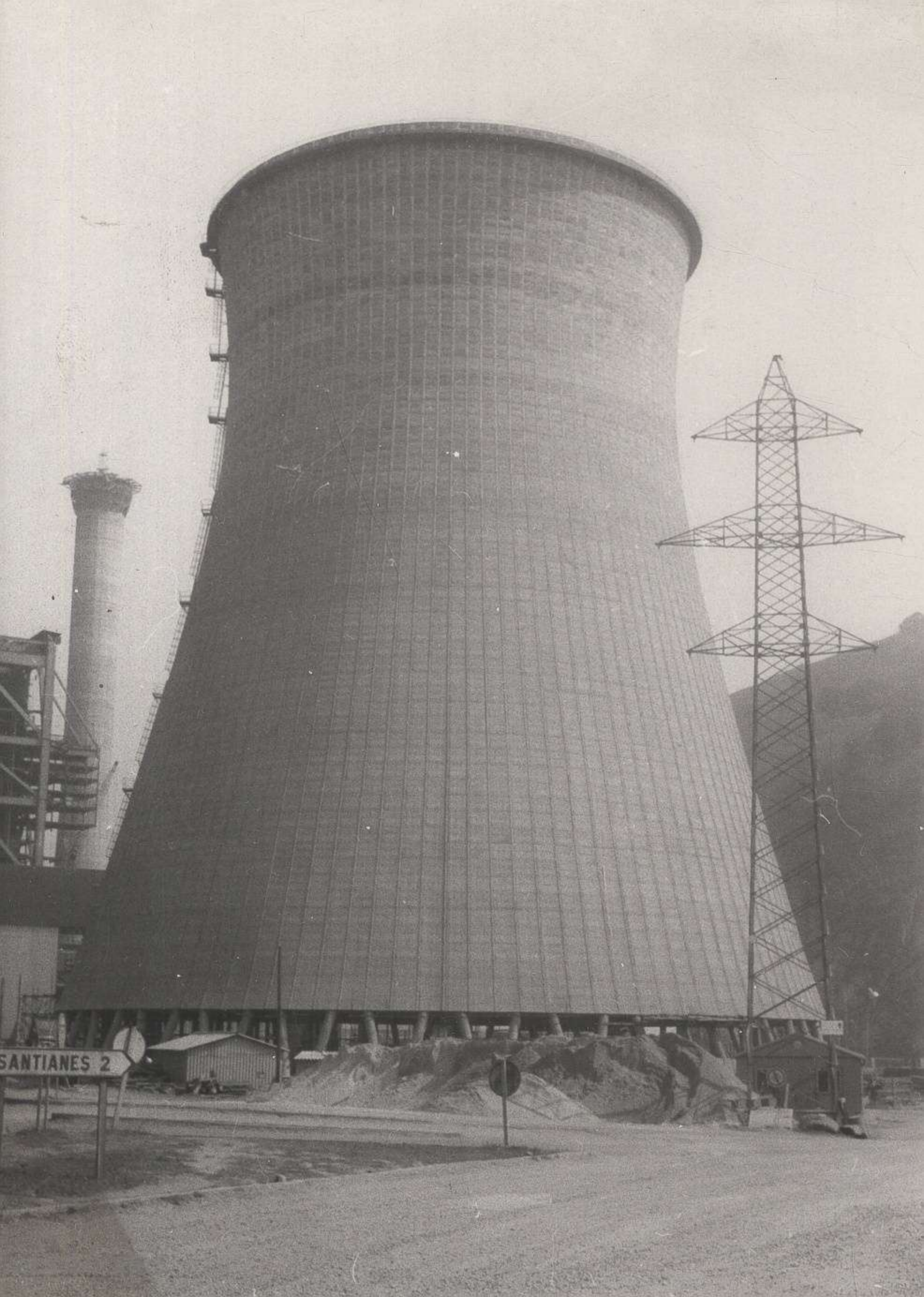
20

M. E. O'D. 1915





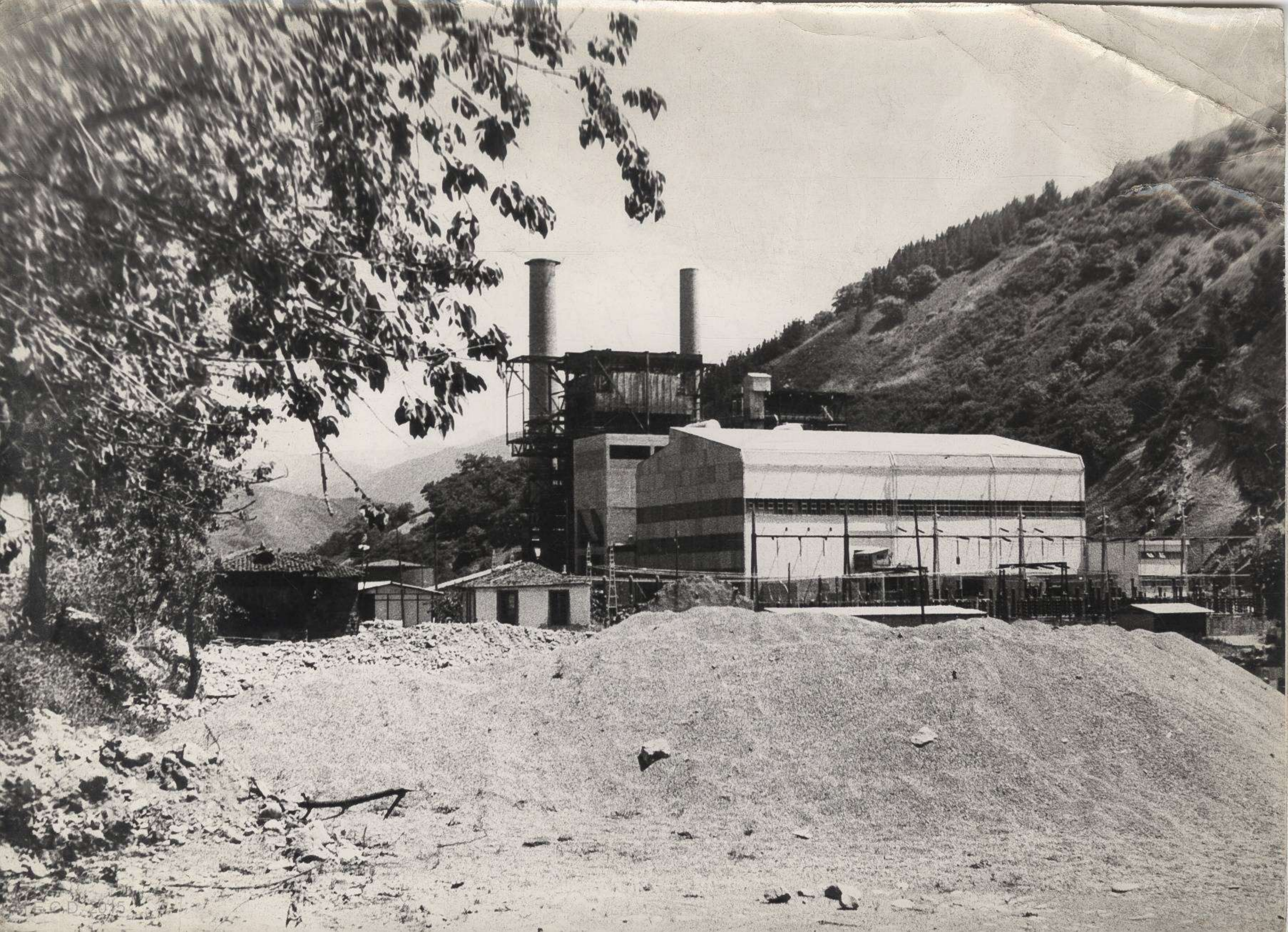
M.F.C.D. 21



SANTIANES 2







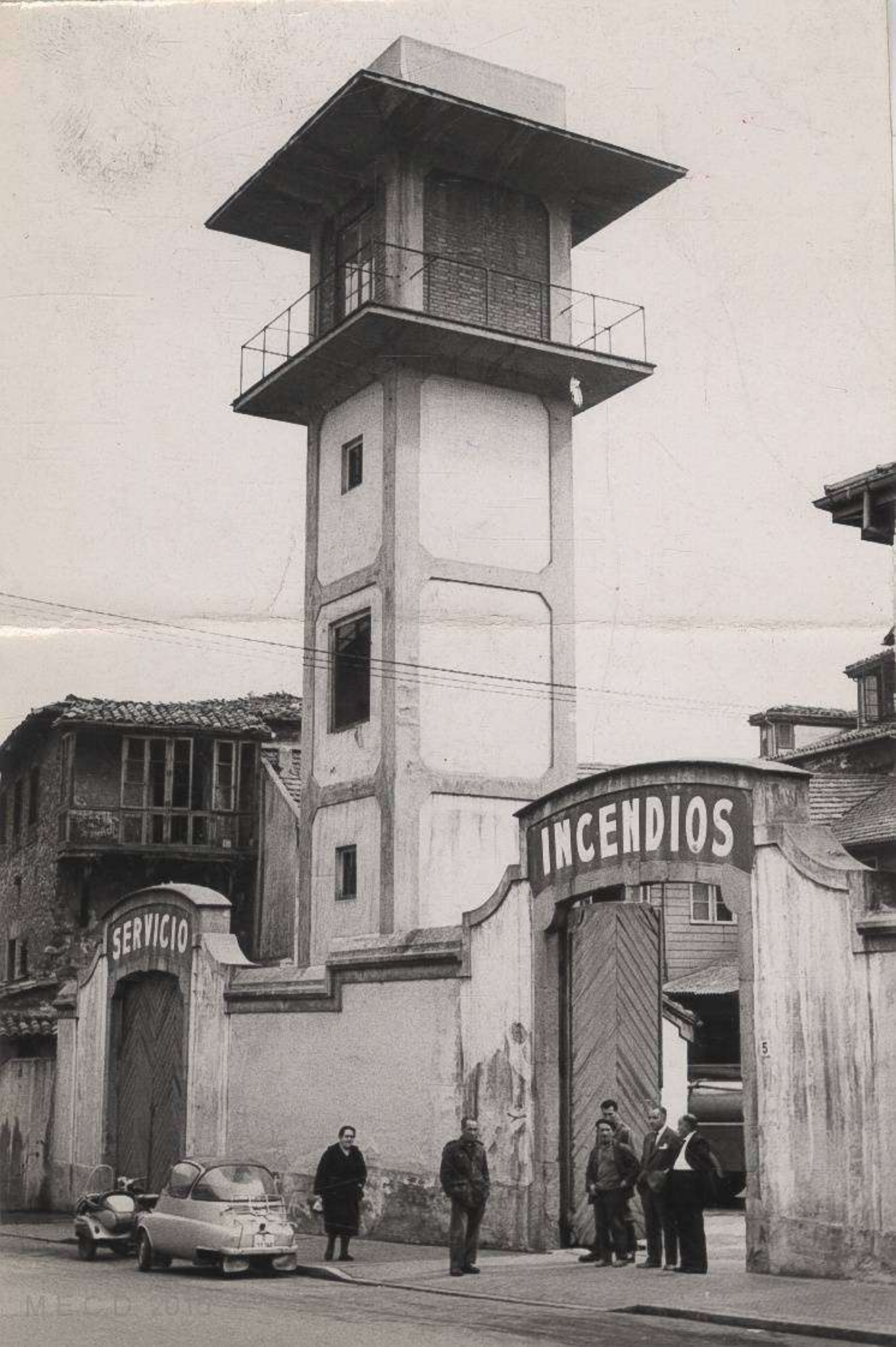




REIVE

R





SERVICIO

INCENDIOS

5









Fernando Pelaez
Chevrolet de Arona

OPAL
FILON
Parquetes
Cebollitas
Industriales
Revestimientos

DILAC DECORACION

s modernos C.D. 2015



A.N.I.C.

ASOCIACION NACIONAL DE INVADIDOS CIVILES





FOMENTO DE OBRAS Y
CONSTRUCCIONES S.A.
OSWALDO GUILLERMO LAMARCA







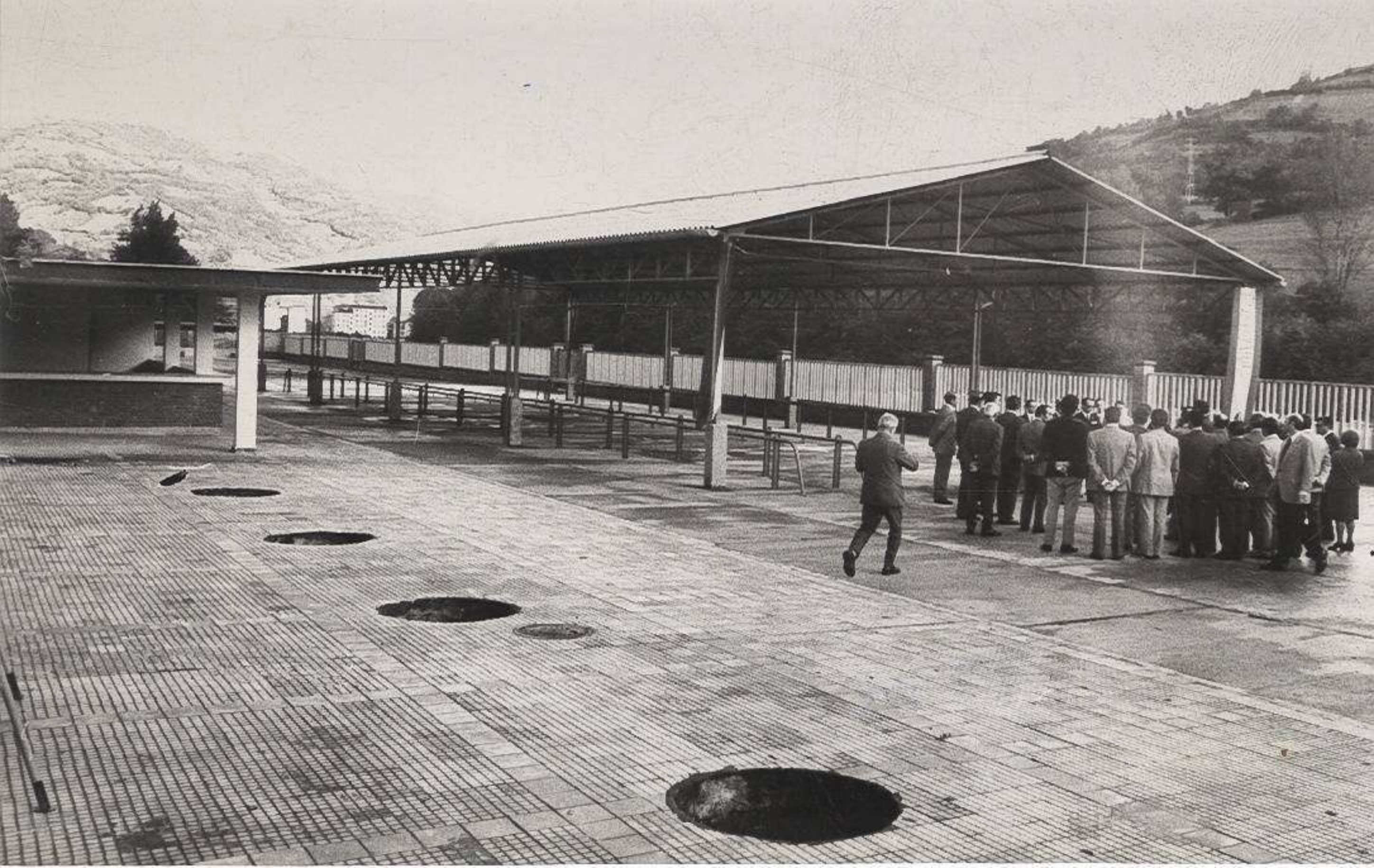
CAJA DE AHORROS DE ASURU

CASINO





M.E.C.D. 2015





HOTEL



OFICINA

DE

TURISMO





OFICINA

DE

TURISMO







J. VALDES-80