

Trombon 2^{no}

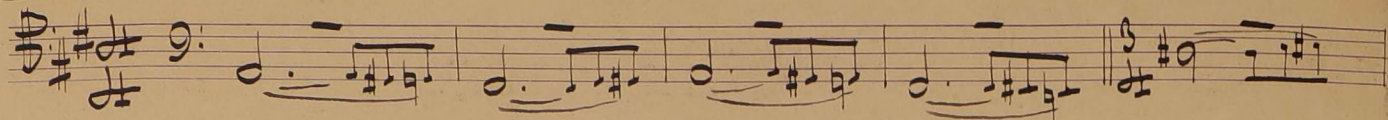
213

Daphnis et Chlor //

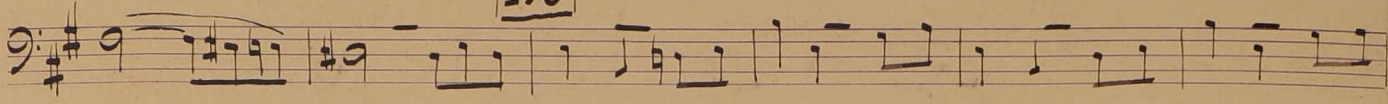
// M. Bravil //



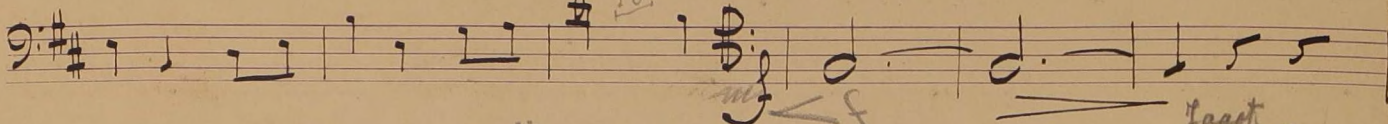
155



156



157 Trombon



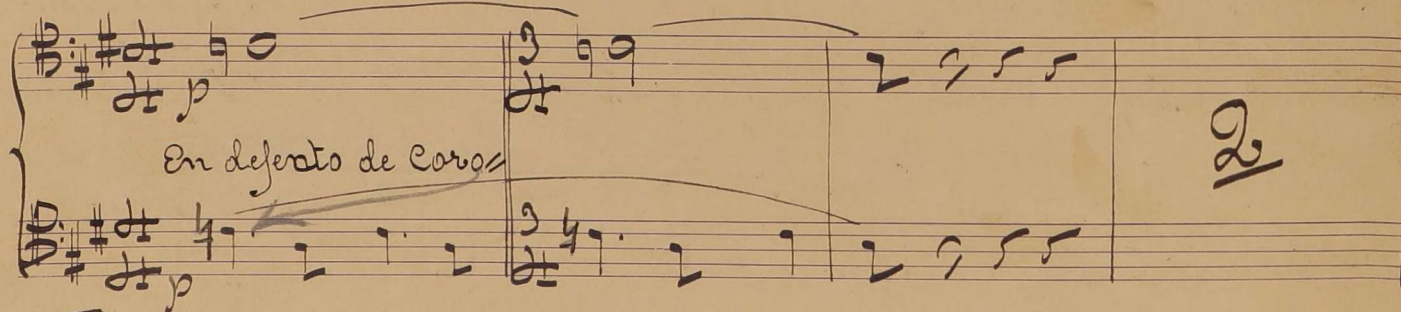
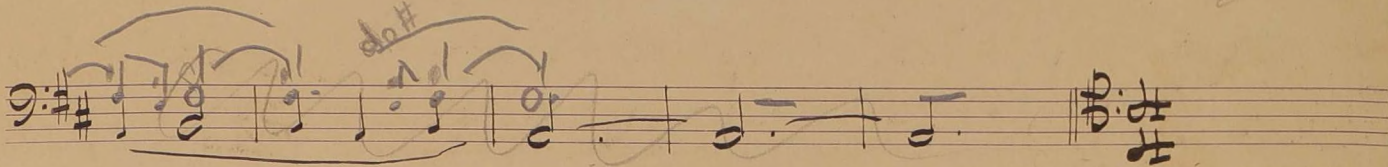
158

159 Flutini

160 Repuinto

161

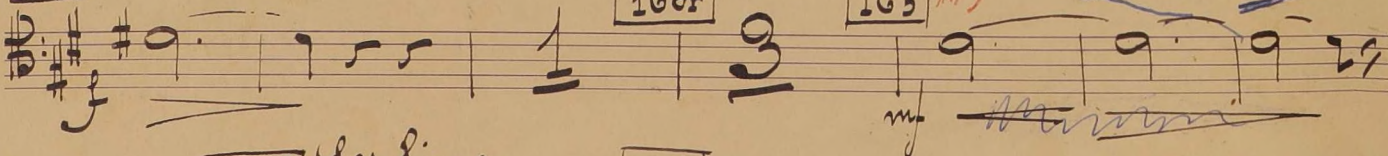
Fagot Vlnes



163

164 in 6

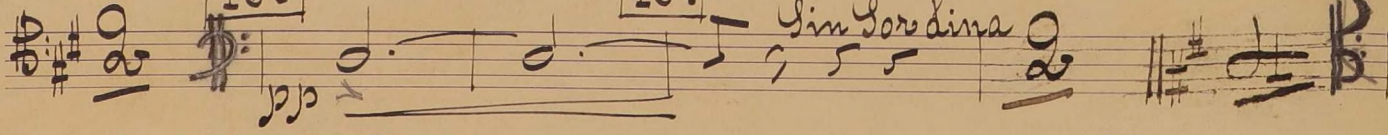
165 in 3



166 Sordina

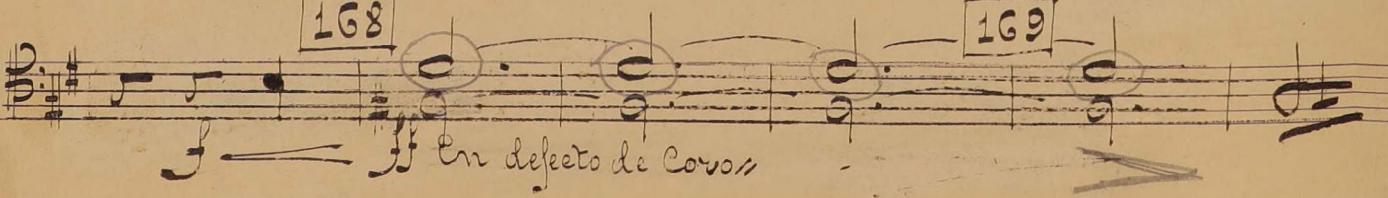
167

sin Sordina



168

169



170 171 172 173

rall 174 175 176

177 178

Retenu légèrement = rall =

179 180 181

Vif

182 183

Un peu plus animé En animant toujours davantage

184 185

Au 1er Mouvt. vif Avec un peu plus de langueros

186 187

En animant toujours Moins animé

188 189

Alanta Tres lent = Alanta Cede tres per

Plus lent = 190 Alanta

Plus lent = 191 Memie mouvt. plus lent =

Retener peu à peu [192] au Mount - Flauta

[193] Lento =

[194] Animi

[195]

Animi

[196]

[197]

[198]

[199]

[200]

[201]

Flauta

[202]

[203]

Handwritten musical notation on a single staff. The key signature is three sharps (F#, C#, G#). The notation includes eighth and sixteenth notes with beams. A box containing the number "204" is located at the top right of the staff.

Handwritten musical notation on a single staff. The key signature is three sharps. The notation includes eighth notes with accents. A box containing the number "205" is at the top left, and another box with "206" is at the top right. The word "Sordina" is written above the staff, and "mf p" is written below it.

Handwritten musical notation on a single staff. The key signature is three sharps. The notation includes quarter notes with accents. A box containing the number "207" is at the top right. The words "Sin Sordina" are written above the staff, and "mp" is written below it.

Handwritten musical notation on a single staff. The key signature is three sharps. The notation includes quarter notes with accents. The dynamic marking "mf" is written below the staff.

Handwritten musical notation on a single staff. The key signature is three sharps. The notation includes quarter notes with accents. A box containing the number "208" is at the top left. The dynamic marking "mf" is written below the staff.

Handwritten musical notation on a single staff. The key signature is three sharps. The notation includes quarter notes with accents. A box containing the number "209" is at the top left. The dynamic marking "mp" is written below the staff.

Handwritten musical notation on a single staff. The key signature is three sharps. The notation includes quarter notes with accents. The dynamic marking "ff" is written below the staff.

Handwritten musical notation on a single staff. The key signature is three sharps. The notation includes quarter notes with accents. A box containing the number "210" is at the top left, and another box with "211" is at the top right. The dynamic marking "ff" is written below the staff.

Handwritten signature or initials in the bottom right corner of the page.

Handwritten number "1715" in the bottom right corner of the page.

Handwritten musical notation on a five-line staff. The key signature has three sharps (F#, C#, G#). The music begins with a dynamic marking *mp*. A handwritten number '9' is written above the first measure. The piece concludes with a double bar line and a final chord. A handwritten number '212' is written above the final measure.

Handwritten musical notation on a five-line staff. The key signature has three sharps. The music begins with a dynamic marking *mf*. A handwritten number '213' is written above the final measure. The piece concludes with a double bar line and a final chord.

Handwritten musical notation on a five-line staff. The key signature has three sharps. The music begins with a dynamic marking *mf*. A handwritten number '214' is written above the first measure. The piece concludes with a double bar line and a final chord. A handwritten number '213' is written above the final measure.

Handwritten musical notation on a five-line staff. The key signature has three sharps. The music begins with a dynamic marking *mf*. A handwritten number '215' is written above the first measure. The piece concludes with a double bar line and a final chord. A handwritten number '14' is written above the final measure.

Handwritten musical notation on a five-line staff. The key signature has three sharps. The music begins with a dynamic marking *mf*. A handwritten number '216' is written above the first measure. The piece concludes with a double bar line and a final chord.

Handwritten musical notation on a five-line staff. The key signature has three sharps. The music begins with a dynamic marking *mp*. A handwritten number '217' is written above the first measure. The piece concludes with a double bar line and a final chord.

Handwritten musical notation on a five-line staff. The key signature has three sharps. The music begins with a dynamic marking *ff*. A handwritten number '218' is written above the first measure. The piece concludes with a double bar line and a final chord.

Handwritten musical notation on a five-line staff. The key signature has three sharps. The music begins with a dynamic marking *ff*. A handwritten number '219' is written above the first measure. The piece concludes with a double bar line and a final chord.

Handwritten musical notation on a five-line staff. The key signature has three sharps. The music begins with a dynamic marking *ff*. A handwritten number '218' is written above the first measure. The piece concludes with a double bar line and a final chord.

Handwritten musical notation on a five-line staff. The key signature has three sharps. The music begins with a dynamic marking *ff*. A handwritten number '219' is written above the first measure. The piece concludes with a double bar line and a final chord. The word 'Oboe' is written below the staff. A handwritten number '218' is written above the first measure.

220

Handwritten musical notation for measure 220, first staff. The key signature is three sharps (F#, C#, G#). The notation includes a treble clef, a common time signature, and a series of eighth notes with slurs and accents.

221

Handwritten musical notation for measure 221, second staff. The key signature is three sharps. The notation includes a treble clef, a common time signature, and notes with slurs and accents. A dynamic marking 'pp' is present below the staff.

Handwritten musical notation for measure 221, third staff. The key signature is three sharps. The notation includes a treble clef and notes with slurs and accents.

Handwritten musical notation for measure 221, fourth staff. The key signature is three sharps. The notation includes a treble clef and notes with slurs and accents, ending with a double bar line and a flourish.

218

Handwritten musical notation for measure 218, first staff. The key signature is three sharps. The notation includes a treble clef, a 3/4 time signature, and notes with slurs and accents. A dynamic marking 'p' is present below the staff.

Handwritten musical notation for measure 218, second staff. The key signature is three sharps. The notation includes a treble clef and notes with slurs and accents.

219

Handwritten musical notation for measure 219, first staff. The key signature is three sharps. The notation includes a treble clef, a 4/4 time signature, and notes with slurs and accents.

Handwritten musical notation for measure 219, second staff. The key signature is three sharps. The notation includes a treble clef and notes with slurs and accents.

220

Handwritten musical notation for measure 220, third staff. The key signature is three sharps. The notation includes a treble clef and notes with slurs and accents.