

Flauta 2^a

y
Flautin (Solo)

DEPOSITARIA
1880
230

Dardanus.

airs de Ballet.

La Suite.

de

Rameau.

No. 1. Entrée.

Majestueusement

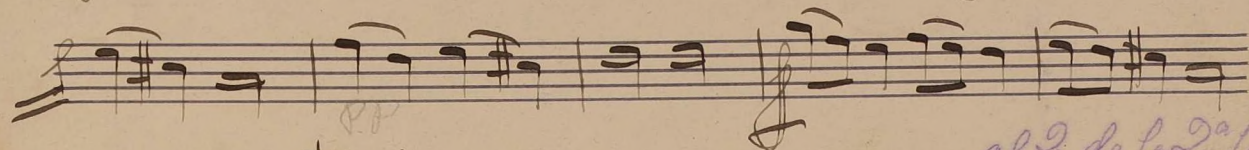
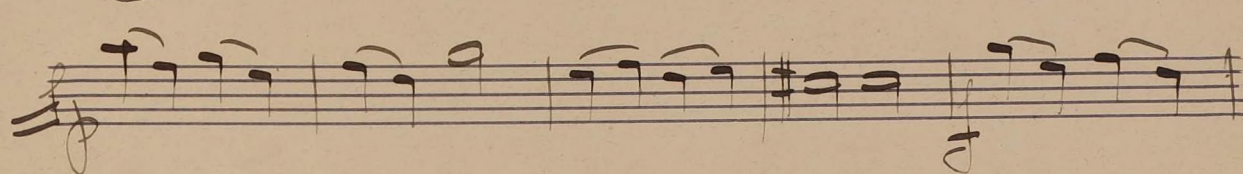
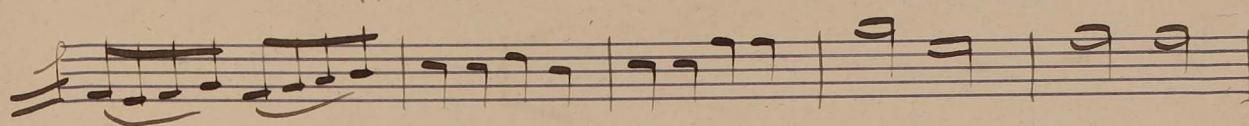
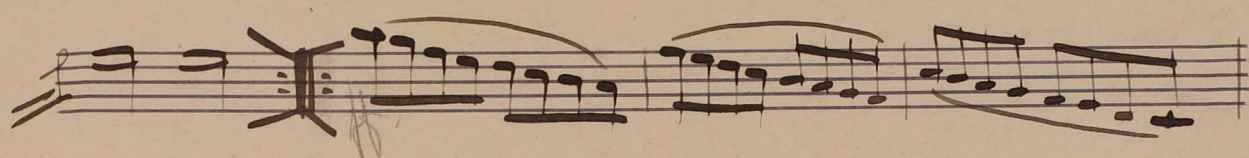
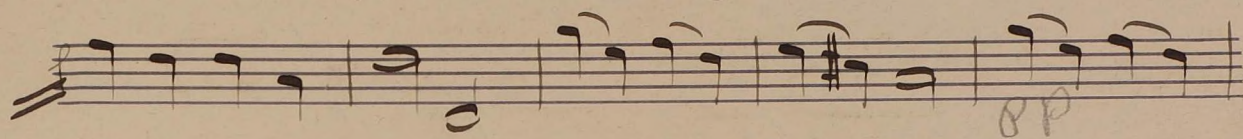
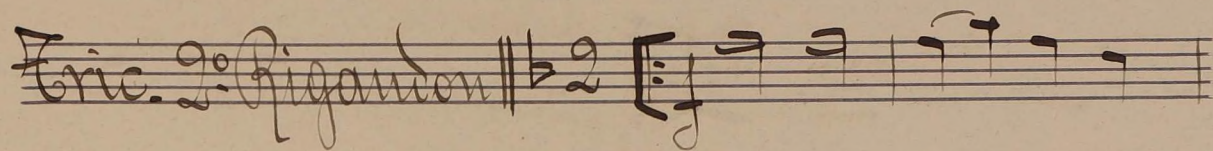
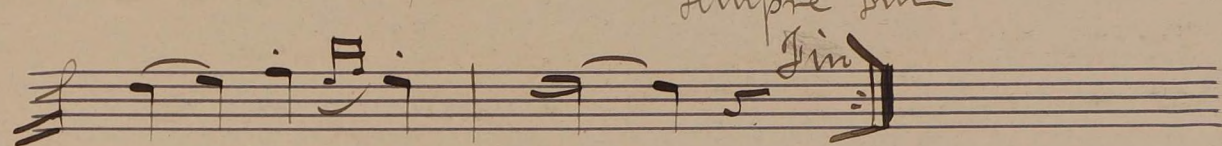
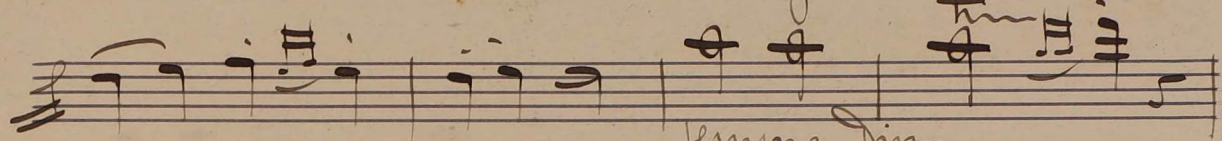
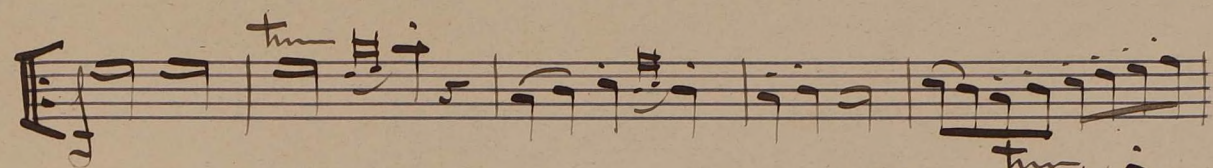
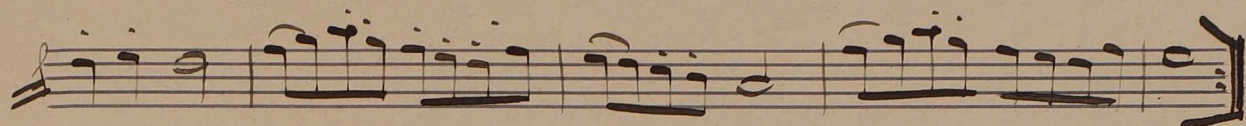
Handwritten musical score for 'No. 1. Entrée'. The score is written on ten staves. It begins with a treble clef, a key signature of one flat (B-flat), and a 2/2 time signature. The tempo/mood is 'Majestueusement'. The music features a variety of rhythmic patterns, including eighth and sixteenth notes, and rests. There are several dynamic markings: 'p' (piano) and 'f' (forte). A 'tr' (trill) is indicated above a note on the seventh staff. A 'cresc' (crescendo) marking is above the eighth staff. A 'dim' (diminuendo) marking is above the first staff of the second section. A purple vertical line is drawn through the first staff of the second section. The score ends with a double bar line.

No. 2. Tambourin.

Asser Vif.

Handwritten musical score for 'No. 2. Tambourin'. The score is written on one staff. It begins with a treble clef, a key signature of two sharps (D major), and a 2/2 time signature. The tempo/mood is 'Asser Vif.'. The music features a variety of rhythmic patterns, including eighth and sixteenth notes, and rests. The score ends with a double bar line.

2. Pettes Flautas



al 3 de la 2^a suite
Facet

calm. P. sur répétition

No. 3. Facet.

No. 2.

(Alta) assez vif.

Handwritten musical score for No. 2, featuring multiple staves with notes, rests, and dynamic markings such as "cresc", "mf", "si", "dim", and "ppp". The score includes various musical notations like beams, slurs, and clefs.

No. 5. Rondeau Gai - Facet.

No. 5. Rondeau Gai - Facet.

Flauta 2^a.

Dardanus.

2^a Suite.

de

Rameau.

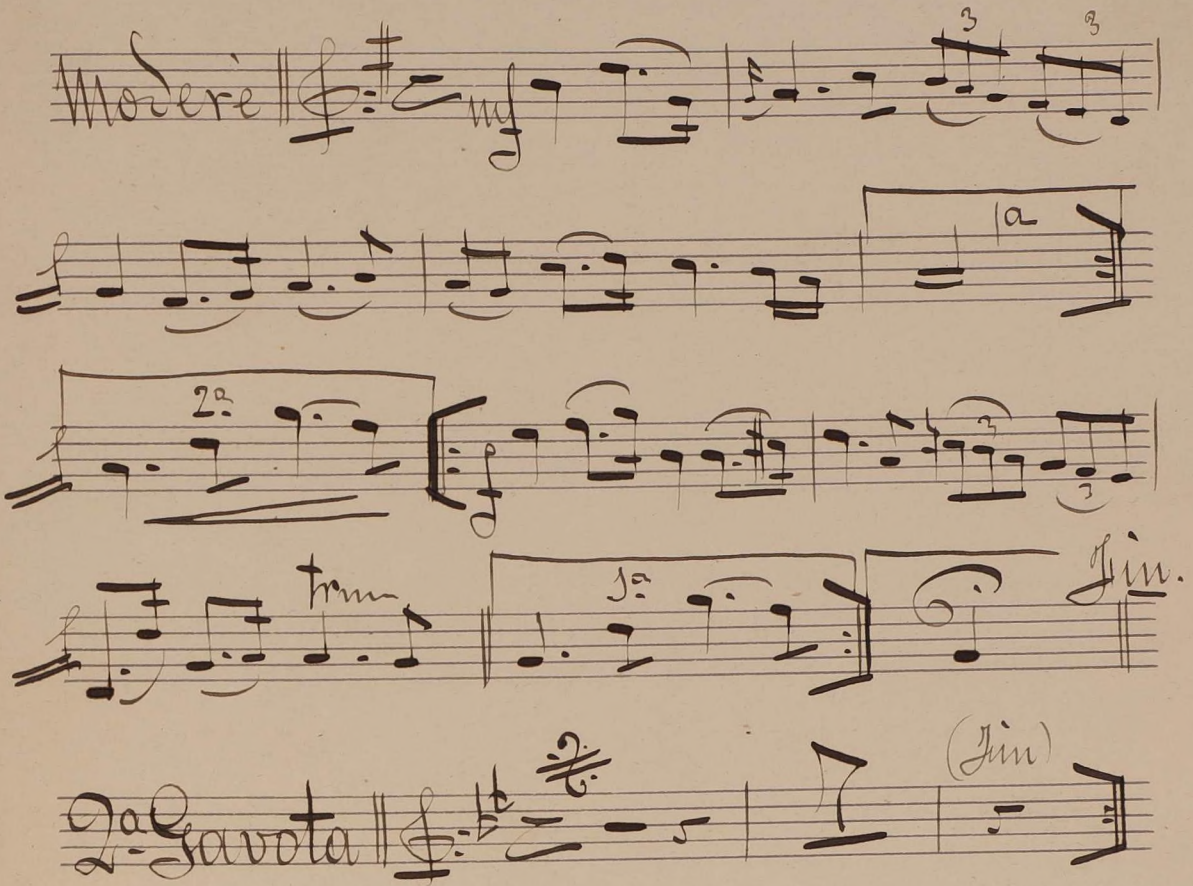
I.

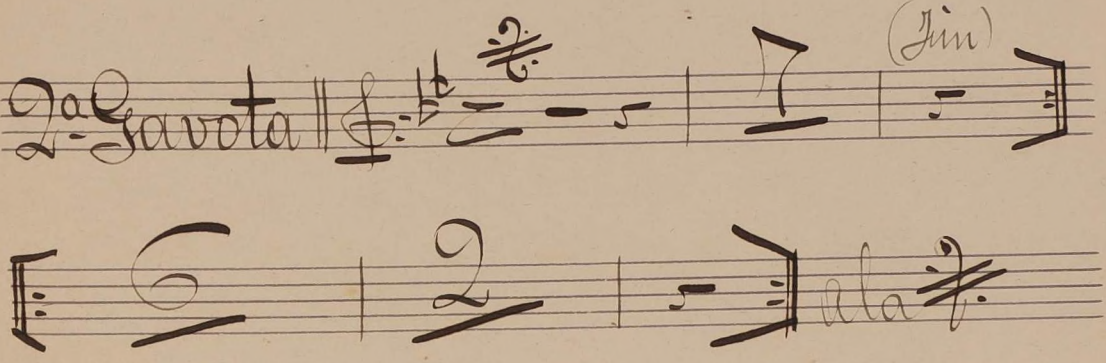
Gracieusement et un peu gai

♩:♭♭ 2

II. Facet.

III.

Moderé  Moderé piece in G major, 3/4 time. The notation includes a treble clef, a key signature of one sharp (F#), and a common time signature. The piece features several measures with triplets and a trill. The tempo marking 'Moderé' is written in a cursive hand. The piece concludes with a double bar line and repeat dots.

2a Gavota  2a Gavota piece in B-flat major, 3/4 time. The notation includes a treble clef, a key signature of two flats (Bb and Eb), and a common time signature. The piece features a trill and a 'Fin.' marking. The tempo marking '2a Gavota' is written in a cursive hand. The piece concludes with a double bar line and repeat dots.

Nº 2. Facet.

