

5

CLARINETE 1^{ro}

Orquesta Sinfónica de Madrid

Número 20

LEONORA OVERTURA N^o 8

BEETHOVEN



Ouverture Nr.3 zur Oper Leonore (Fidelio).

ENDO

Adagio.

Clarinetto I in C.

L.van Beethoven, Op.72.

Handwritten: *a6*, *5*, *9*, *6/1/3*

Allegro.

Handwritten: *12*, *14*, *15*, *16*, *3*, *4*, *5*, *6*, *7*, *8*, *9*, *10*, *11*, *12*, *13*, *14*, *15*, *16*, *17*, *18*, *19*, *20*, *21*, *22*, *23*, *24*, *25*, *26*, *27*, *28*, *29*, *30*, *31*, *32*, *33*, *34*, *35*, *36*, *37*, *38*, *39*, *40*, *41*, *42*, *43*, *44*, *45*, *46*, *47*, *48*, *49*, *50*, *51*, *52*, *53*, *54*, *55*, *56*, *57*, *58*, *59*, *60*, *61*, *62*, *63*, *64*, *65*, *66*, *67*, *68*, *69*, *70*, *71*, *72*, *73*, *74*, *75*, *76*, *77*, *78*, *79*, *80*, *81*, *82*, *83*, *84*, *85*, *86*, *87*, *88*, *89*, *90*, *91*, *92*, *93*, *94*, *95*, *96*, *97*, *98*, *99*, *100*

colla parte 4

Tempo I.

Handwritten: *70*

Clarinetto I.

3
AQUILA
DEPOS

9

peresc. *ff* *sempre ff* **F**

sf sf sf sf sf sf sf **G** *2 sf sf* *pdolce*

cresc. p *cresc.* *sempre pp*

pp *pp* **H**

Presto. *ff* **Viol. I.**

54 18 **73**

sf sf sf sf sf sf sf sf sf sf sf sf

sf sf sf sf **I**

p **74**

ff

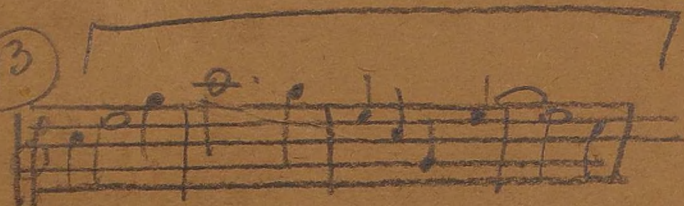
45 **K** *f*

cresc. **76**

fff sf sf sf sf

1 **1**

13



f