

1
Trompa H^{ta}

189

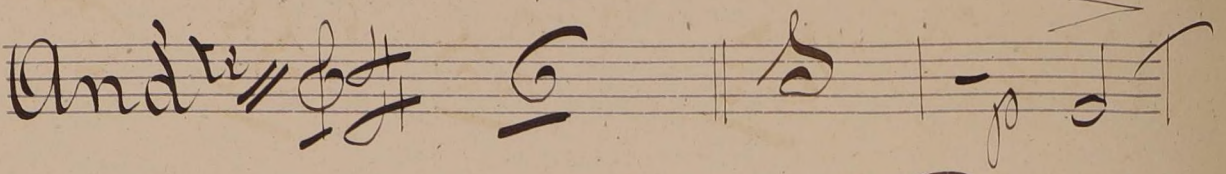
Variaciones

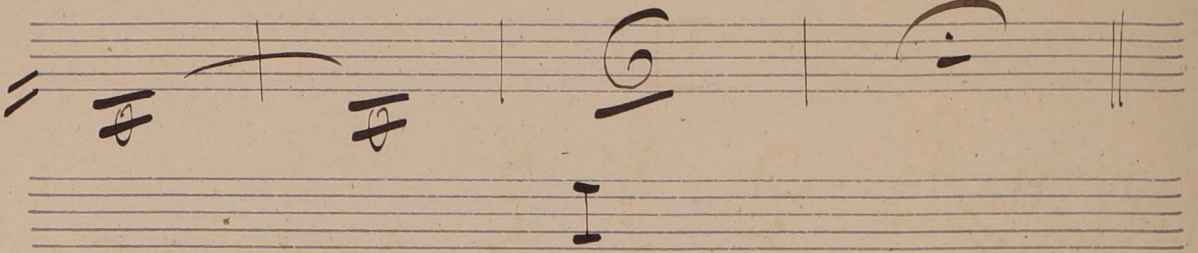
Sinfónicas

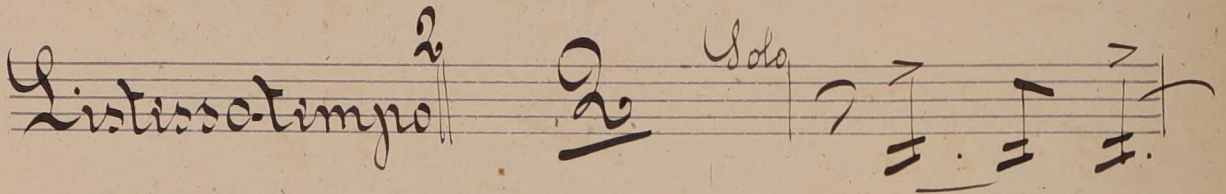
Elgar

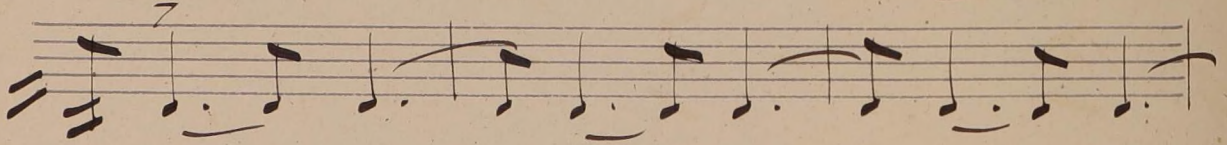


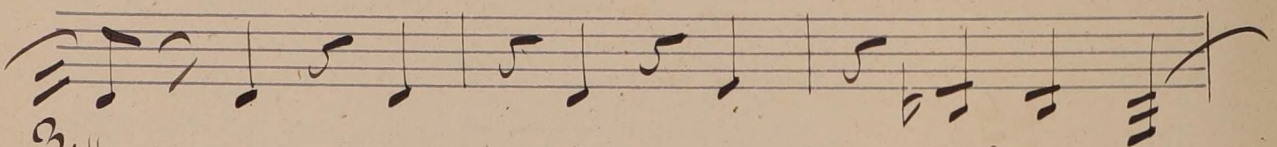
FA Enigma

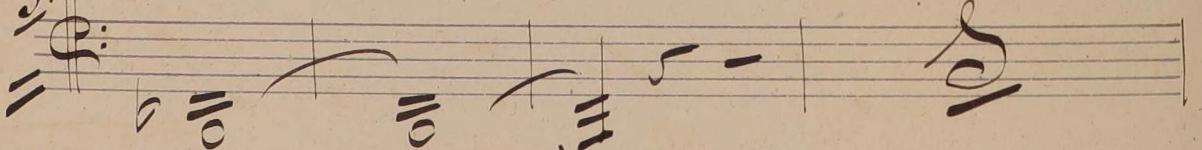
And^{te} // 

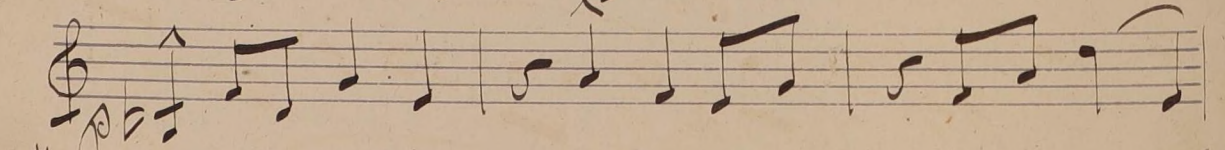


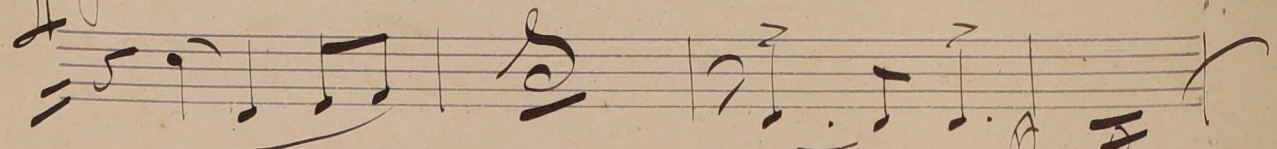
Distesso tempo ²  Solo

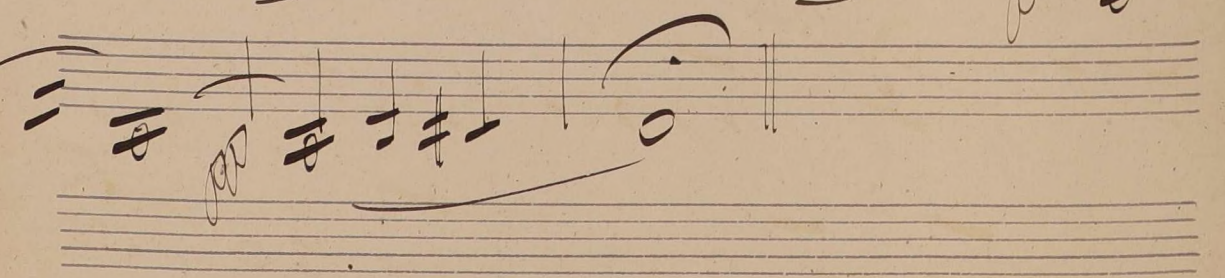












II *no se dice*

Airio $\frac{5}{8}$

III

Airio $\frac{8}{8}$

IV

Airio $\frac{5}{8}$

Finis

V no se die

Mod^{ro} ⁵⁵ ⁵² ⁵⁶ ⁵⁷

VI

And^{no} ¹⁹ ²⁰ ²⁵ ²²

VII

Presto ²³ ²⁴ ²⁵

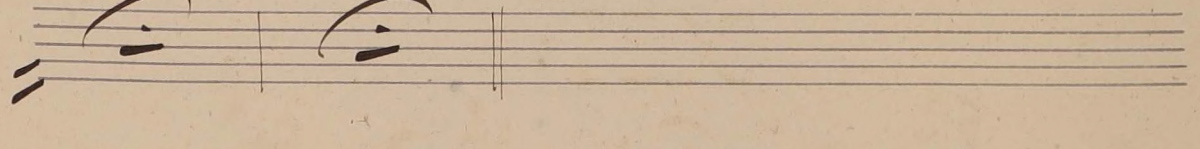
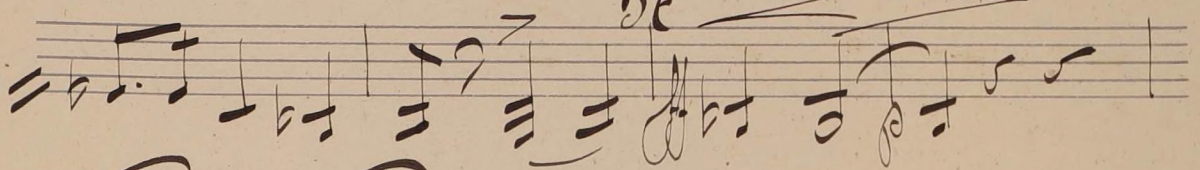
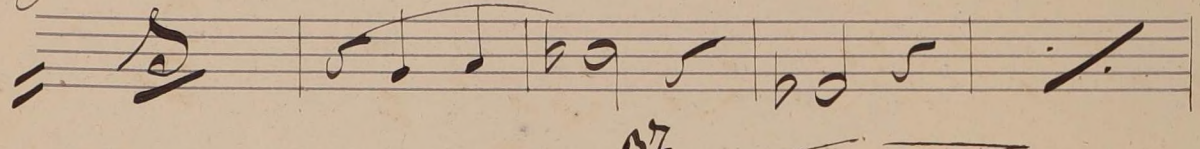
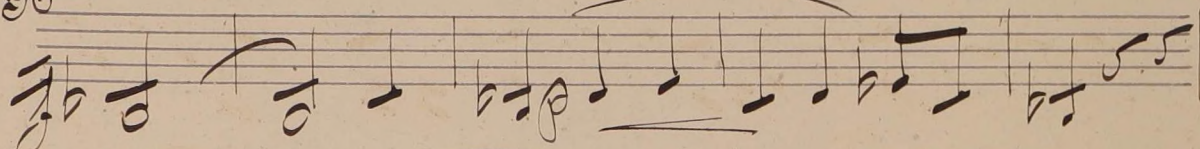
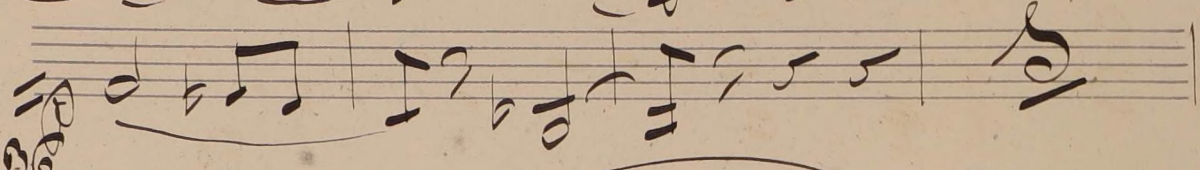
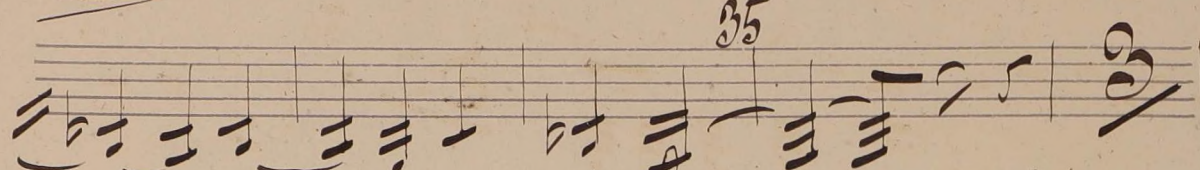
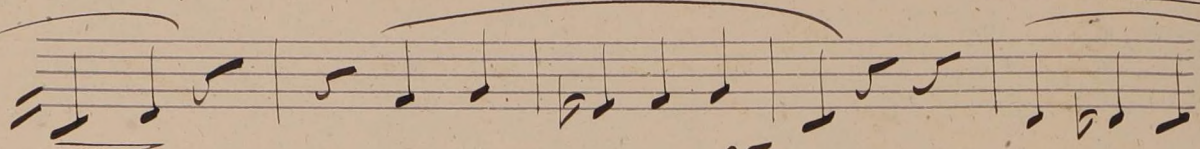
Handwritten musical score for measures 26-29. The notation includes various note values, rests, and clefs. Measure numbers 26, 27, 28, and 29 are clearly marked above the staves.

VIII *no se dice*

Handwritten musical score for measures 30-32. The first staff is marked with 'Allegro' and '30'. The second staff is marked with '31' and '32'. The notation includes various note values and rests.

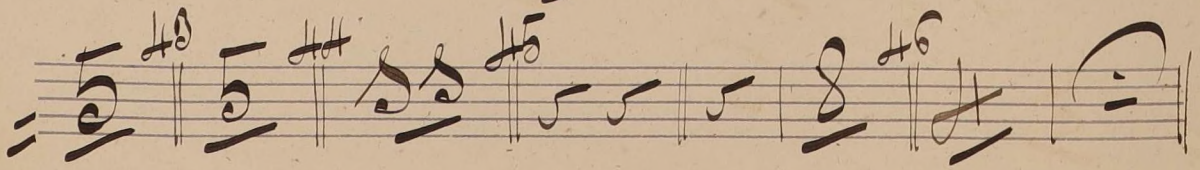
IX

Adagio ³³ $\frac{3}{4}$ $\frac{8}{4}$ ³⁴ $\frac{2}{4}$



X

All^o ³⁸ $\frac{2}{4}$ $\frac{2}{4}$ ³⁹ $\frac{2}{4}$ ⁴⁰ $\frac{2}{4}$ ⁴¹ $\frac{2}{4}$ ⁴² $\frac{2}{4}$



Anda

XI

Handwritten musical score for section XI. It consists of seven staves of music. The first staff begins with the tempo marking *And^{te}* and the number 47. The music is written in treble clef with a 9/8 time signature. The score includes various rhythmic values such as eighth and sixteenth notes, rests, and dynamic markings like *ff* and *mf*. Measure numbers 47, 48, 49, 50, and 55 are indicated above the staves.

Se dice

XII

Handwritten musical score for section XII. It consists of two staves. The first staff begins with the tempo marking *And^{te}* and the number 52. The music is written in treble clef with a 4/4 time signature. The score includes notes, rests, and dynamic markings like *ff*. Measure numbers 52, 53, and 54 are indicated above the staff. The second staff begins with the word *Solo* and contains a melodic line with a large slur. The word *ataca* is written below the second staff.

XIII

Moderato

55 56 57 58 59 60

ritar

XIV

All^o

61 62 63 64

Handwritten musical score on ten staves. The notation includes various notes, rests, and accidentals. Measure numbers 65, 66, 67, 68, 69, and 70 are written above the staves. A diagonal line is drawn across the lower half of the page, starting from the left margin and extending towards the right. At the bottom, there is a signature and the word "Fin".

Fin
[Signature]

This image shows a page of handwritten musical notation on ten staves. The notation is written in a cursive style and includes various musical symbols such as notes, rests, and accidentals. The score is annotated with several numbers and symbols:

- A "my" signature is written in the top left corner.
- The number "72" is written above the first staff.
- The number "73" is written above the third staff.
- The number "74" is written above the sixth staff.
- The number "75" is written below the seventh staff.
- Vertical lines with numbers "151" and "152" are drawn across the staves, possibly indicating measure numbers or section markers.
- There are several large, stylized symbols or flourishes interspersed within the musical notation.

Handwritten musical notation on three staves. The first staff contains a series of notes with accidentals (sharps and naturals) and a fermata above it. The second and third staves continue the melodic line with various note values and accidentals.

Handwritten musical notation on three staves. The word "Accelerando" is written above the second staff. The notation includes notes with accidentals and a fermata. A diagonal line is drawn across the staves from the middle of the first staff to the middle of the third staff.

Handwritten musical notation on three staves. The word "Presto" is written above the second staff. The notation includes notes with accidentals and a fermata. A diagonal line is drawn across the staves from the middle of the first staff to the middle of the third staff.

Handwritten musical notation on three staves. The number "83." is written above the first staff. The notation includes notes with accidentals and a fermata. A diagonal line is drawn across the staves from the middle of the first staff to the middle of the third staff.

