

1

VIOLONCELLO

Orquesta Sinfónica de Madrid

Núm -158

DEUXIEME SYMPHONIE

BORODIN

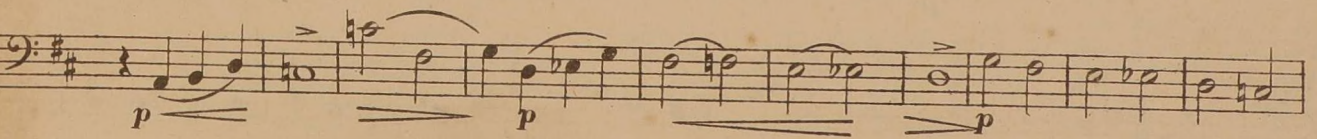
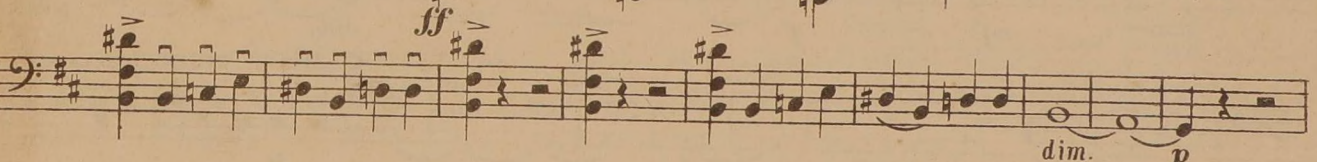
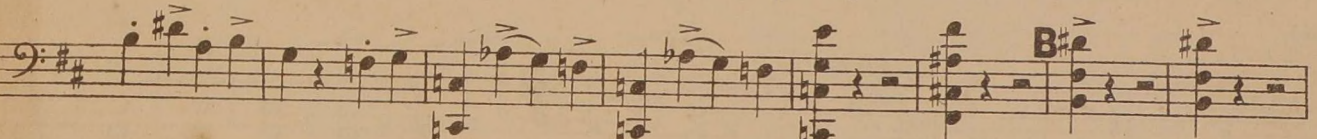
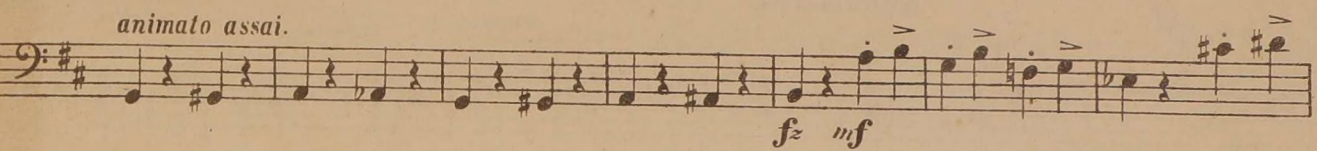
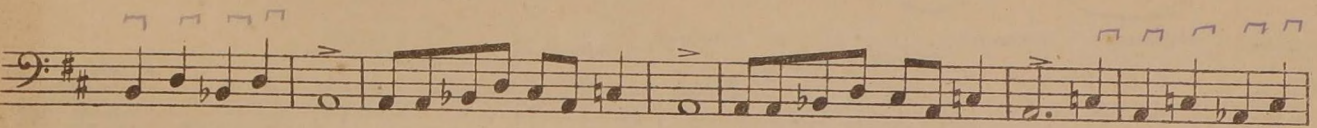
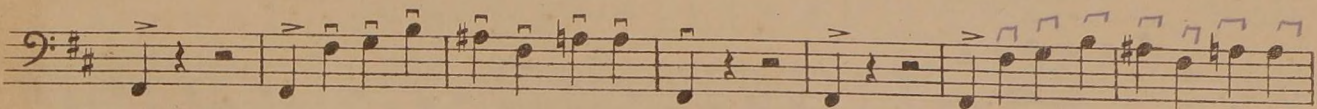
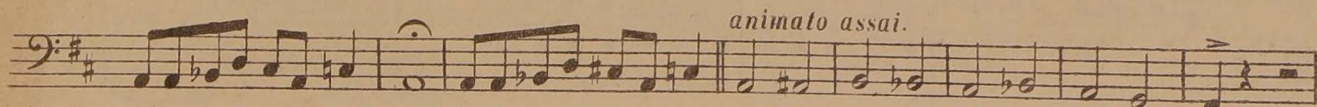


DEUXIÈME SYMPHONIE.

VIOLONCELLO.

A. BORODINE.

Allegro.



Handwritten number '175' in the bottom right corner.

VIOLONCELLO.

Poco meno mosso.

rit. dolce

Violoncello staff with notes and dynamics. The staff begins with a whole rest followed by a quarter note G4, then a series of eighth notes: A4, B4, C5, B4, A4, G4, F4, E4, D4, C4. There are fermatas over the first G4 and the final C4. The dynamic is *rit. dolce*.

Piano accompaniment staves. The right hand plays chords and single notes, while the left hand plays a steady eighth-note accompaniment. Dynamics include *p* and *mf*.

cresc. poco accel.

Piano accompaniment staves. The right hand plays chords and single notes, while the left hand plays a steady eighth-note accompaniment. The dynamic is *cresc. poco accel.*

animato assai

ff marcato cresc.

Violoncello staff with notes and dynamics. The staff begins with a whole rest followed by a quarter note G4, then a series of eighth notes: A4, B4, C5, B4, A4, G4, F4, E4, D4, C4. There are fermatas over the first G4 and the final C4. The dynamic is *ff* and the tempo is *animato assai*. The instruction *marcato cresc.* is also present.

ff marcato cresc.

Violoncello staff with notes and dynamics. The staff begins with a whole rest followed by a quarter note G4, then a series of eighth notes: A4, B4, C5, B4, A4, G4, F4, E4, D4, C4. There are fermatas over the first G4 and the final C4. The dynamic is *ff* and the instruction *marcato cresc.* is present.

7 pesante

mf *f* dim. *pdim.*

Violoncello staff with notes and dynamics. The staff begins with a whole rest followed by a quarter note G4, then a series of eighth notes: A4, B4, C5, B4, A4, G4, F4, E4, D4, C4. There are fermatas over the first G4 and the final C4. The dynamic is *mf* and the tempo is *pesante*. The instruction *f* is also present. The dynamic *dim.* and *pdim.* are also present.

5

p *p* **E** Poco meno mosso.

Violoncello staff with notes and dynamics. The staff begins with a whole rest followed by a quarter note G4, then a series of eighth notes: A4, B4, C5, B4, A4, G4, F4, E4, D4, C4. There are fermatas over the first G4 and the final C4. The dynamic is *p* and the tempo is *Poco meno mosso*. The instruction **E** is also present.

1

p

Violoncello staff with notes and dynamics. The staff begins with a whole rest followed by a quarter note G4, then a series of eighth notes: A4, B4, C5, B4, A4, G4, F4, E4, D4, C4. There are fermatas over the first G4 and the final C4. The dynamic is *p*.

Violoncello staff with notes and dynamics. The staff begins with a whole rest followed by a quarter note G4, then a series of eighth notes: A4, B4, C5, B4, A4, G4, F4, E4, D4, C4. There are fermatas over the first G4 and the final C4.

VIOLONCELLO.

F Animato assai. 2

p *f* *p* *cresc.*

f

f *pizz.* *p* *arco* *mf*

Animato assai. *H* *f dim.* *p*

ff *p*

VIOLONCELLO.

ff *rall.*

K Allegro. (Tempo I.)

fff

L

fz *mf*

Poco meno mosso. *ff* *fz* poco rit.

p pizz. *mf* *mf* *pp* arco **M**

p

N Animato assai.

p *f* *f* *fcresc.* *ff*

poco a poco piu animato

fp *cresc.* *mf* *f* *ff*

0 1 2 3 4 5 6 7

8 9 10 poco a poco allarg e pesante *ff* a tempo

SCHERZO.

Prestissimo.
pizz.

VIOLONCELLO.

dim. *mf* 3 *p* *cresc.* *f* 1

pizz.

mf 3 *mf* *cresc.*

1 A 5 arco 3 pizz. 1

f *mf* *f* *p* *f*

arco 2 pizz. 3 B 1 arco

mf *p* *f* *f* *appass. e energico*

3 *ff*

C 3 *ppizz.* *cresc.*

f 1 *mf* 3

VIOLONCELLO.

1

p *cresc.* *f*

D *arco* *mf*

cresc. *ff*

E *poco cresc.* *poco cresc.*

dim. *pp* *4 pdim.* *pprall.* **2** **13** *p*

cresc. *dim.* *mf pizz.* *p* *f*

F *arco* *p* *cresc.*

Detailed description of the musical score: The score is for a cello part. It begins with a first ending bracket labeled '1'. The first staff starts with a piano (*p*) dynamic, followed by a crescendo (*cresc.*) and a fortissimo (*f*) dynamic. The second staff is marked 'D' and 'arco', starting with mezzo-forte (*mf*). The third staff continues with a crescendo (*cresc.*) and fortissimo (*ff*). The fourth staff is marked 'E' and 'poco cresc.', with a piano (*p*) dynamic. The fifth system is a double bar with two staves, marked 'Allegretto.' and containing performance instructions: *dim.*, *pp*, *4 pdim.*, *pprall.*, **2**, **13**, and *p*. The sixth staff has dynamics *cresc.*, *dim.*, *mf pizz.*, *p*, and *f*. The seventh staff is marked 'F' and 'arco', starting with piano (*p*) and a crescendo (*cresc.*).

VIOLONCELLO.

The musical score for Violoncello and Piano consists of the following sections:

- Section 1:** Cello line with a triplet of eighth notes and a dynamic marking of *mf*.
- Section 2:** Piano accompaniment with dynamic markings *cresc.*, *dim.*, *mf*, and *p*. It includes performance instructions *pizz.* and *arco*.
- Section 3:** Cello line with a dynamic marking of *p*.
- Section 4:** Cello line with a 4/4 time signature, dynamic markings *mf* and *p*, and a performance instruction *pizz.*.
- Section 5:** Cello line with dynamic markings *f*, *mf*, and *cresc.*.
- Section 6:** Cello line with dynamic markings *f*, *mf*, and *f*, and performance instructions *arco* and *pizz.*.
- Section 7:** Cello line with dynamic markings *p*, *f*, *mf*, and *p*, and performance instructions *arco* and *pizz.*.
- Section 8:** Cello line with a dynamic marking of *f* and the instruction *f appass e energico*.
- Section 9:** Cello line with a dynamic marking of *ff*.
- Section 10:** Cello line with a key signature change to *K*, dynamic markings *p*, *cresc.*, and *f*, and performance instructions *pizz.* and *arco*.

VIOLONCELLO.

Musical score for Violoncello, page 8. The score consists of ten staves of music. The key signature has one flat (B-flat). The time signature is 3/4. The score includes various dynamics and performance instructions:

- Staff 1: *mf*, *p*, *dim.*, *cresc.*, **3**
- Staff 2: *f*, *mf*, *mf*, **1**, **L** arco
- Staff 3: *cresc.*
- Staff 4: *ff*, *p*, *cresc.*, **M**
- Staff 5: *dim.*, *p poco cresc.*, *dim.*
- Staff 6: *sempre piu animato.*, *mf*
- Staff 7: *p*
- Staff 8: *cresc.*, *ff*, *pizz.*, *arco*, *p*, **N**, **3**
- Staff 9: *p*, *dim.*, **01**, **4**, *ppp*

III.

VIOLONCELLO.

Andante.

4 *pp* *ppp* 2

2 2 2 B 1 1 C *pesante* *f* *Poco animato.* 5

pesante D *mf* *p*

E *mf* *ff* *dim.*

F *Poco piu animato.* *f* *p*

1 *p* 1 *p*

G *mf* *pesante cresc.* *f* 7

VIOLONCELLO.

Violoncello staff with dynamics *f*, *p*, and *cresc*. Includes blue checkmarks and accents.

Piano accompaniment (H) with dynamics *ff* and *fff*. Includes blue checkmarks and accents.

Tempo I. ma piu animato.

Violoncello staff with dynamics *dim.*, *poco rit.*, *poco meno mosso.*, and *cantabile.*. Includes blue checkmarks and accents.

Violoncello staff with dynamics *mf* and *f*. Includes blue checkmarks and accents.

Piano accompaniment (L) with dynamics *dim.* and *p*. Includes blue checkmarks and accents.

Violoncello staff (M) with dynamics *p*, *mf*, *f*, and *p*. Includes blue checkmarks and accents.

Poco piu animato.

Tempo I.

Violoncello staff (N) with dynamics *p*, *mf*, *f*, *pp*, and *attacca*. Includes blue checkmarks and accents.

Piano accompaniment (O) with dynamics *pp* and *attacca*. Includes blue checkmarks and accents.

FINALE.

VIOLONCELLO.

Allegro.

The musical score for the Violoncello part consists of ten staves of music. The key signature is three sharps (F#, C#, G#) and the time signature is 3/4. The piece begins with a *p* dynamic and a *poco cresc.* marking. The first staff contains a continuous eighth-note pattern. The second staff introduces a *cresc.* marking and features a *fz* dynamic. The third staff includes a *f* dynamic and a *tr* (trill) marking. The fourth staff has a *f* dynamic and a *3 A* marking. The fifth staff features a *p* dynamic and a *4* marking. The sixth staff has a *pp* dynamic and a *4* marking. The seventh staff includes a *fz* dynamic, a *B* marking, and a *ff* dynamic. The eighth staff has a *p* dynamic. The ninth staff features a *cresc.* marking, a *f* dynamic, and a *C* marking. The tenth staff has a *p* dynamic and a *1* marking.

VIOLONCELLO.

pizz. *ff* *poed allarg.*

a tempo
arco *mf* arco *cresc.* *f* *p*

pp

f *rall.* **2** **E** *Lento. Allegro.* **1** *Lento. Allegro.* **1** *rall.* **2** **1** *rall.*

a tempo *p*

cresc.

ff **F** *ff* *cresc.* *marcato*

G *f* *f pesante* *cresc.*

VIOLONCELLO.

simile
fz f
allarg. *a tempo*
fz ff f
ff
f p
poco cresc. *cresc.*
f
tr
f
p
pp *pp spiccato*
K
mf

Handwritten signature or initials in blue ink, possibly reading 'L. B. T.'

VIOLONCELLO.

tranquillo
L 3 *p* 2 2

M arco *p* pizz. *mf*

f *ff* arco *dim.*

ff poco a poco piu animato

allarg. *a tempo*

N *Animato* *ff*

O *Tempo I.* *fz p* *cresc. poco a poco piu animato*

cresc. molto *Vivo.* *f*

ff *fz* *Fine.*