

Symphonie E moll. -143

in E, D e A.

Largo. (♩ = 48)

Timpani.

I.

S. Rachmaninow, Op. 27.



1 2 3 8 9 10 * 11 4 1 1 Ob. I.
Vcl. e Basso Viol. I. 2

3 4 5 6 7 8 *trm trm trm*
p dim.

Poco più mosso. (♩ = 58)
trm trm trm 4 1 1 1 1 2 1 1 1 1 1
p dim. rit.

Viol. I. a tempo *trm* 1 6 3 2 3 1
f > p dim. rit.

a tempo Allegro moderato. (♩ = 63)
Solo 1 2 3 4 5 15 4 6 7 8 1
Cor. ingl. Ob. I.

Ob. II. Ob. I. 2 3 4 5 6 1 2 3 4 5 6

Poco a poco più vivo. (♩ = 72)
2 3 4 5 6 1 2 3 4 6 1 2
Viol. I.

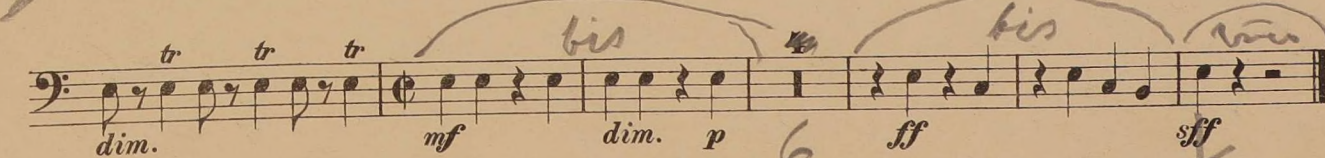
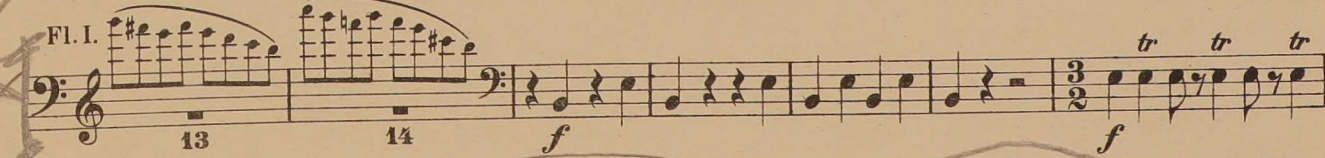
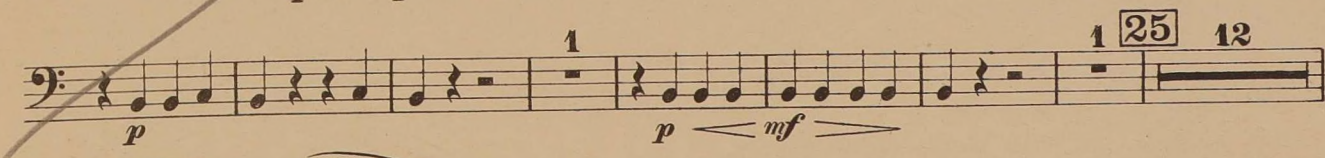
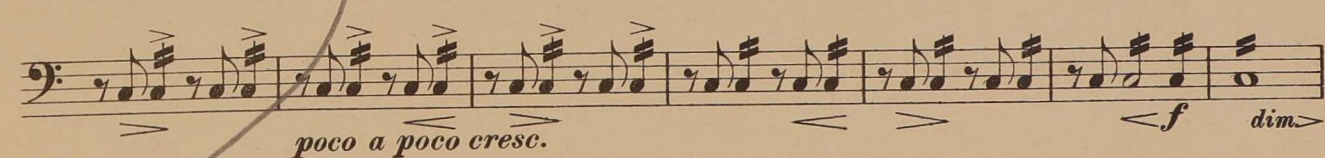
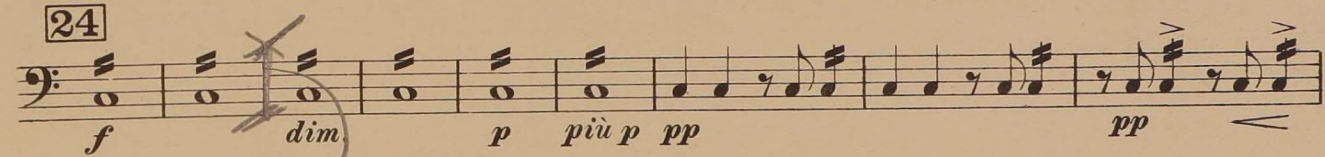
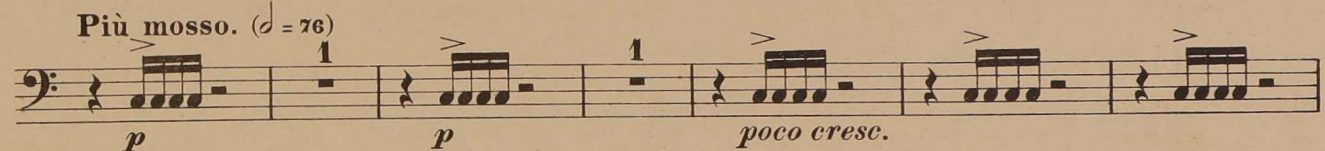
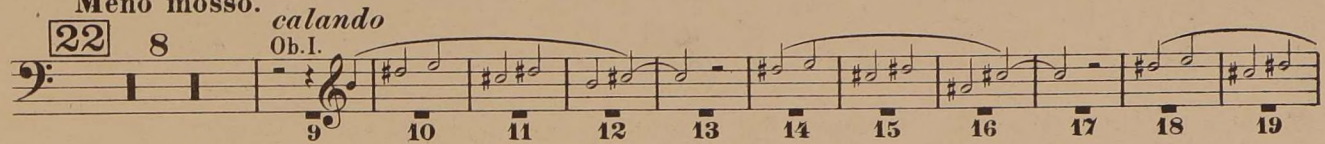
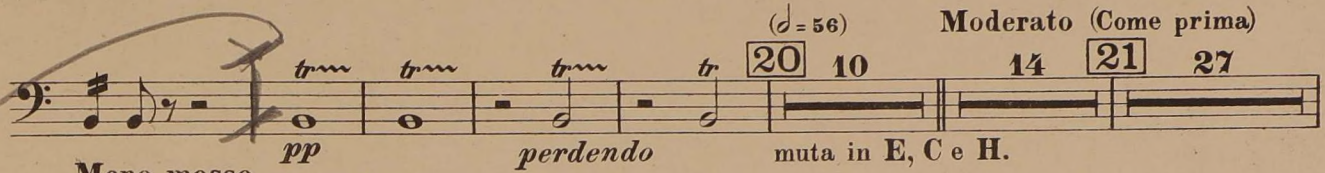
3 4 5 6 7 8 9

Meno mosso. (♩ = 80) 3 7 2 *rit.* 1 10 8 10 9 15
f p dim. pp

a tempo poco a poco calando *rit.* - Tempo I. (♩ = 60-63)
3 1 4 2 6 7 8
Clar. I.

10 Viol. Solo 1 1 2 2 2 3 4 5 6 7
muta in C, G e Fis.

Timpani.



tenida
3 compas



Timpani.

in A, D e E.

II.

Allegro molto. (♩ = 126) 26

14 *Vel. Basso* 26 15 16 *f* 17 *Vel. Basso* 27 22

28 *Viol. I.*

poco a poco dim. *perdendo* *rit.* 3

Moderato. 29 8 29 1 2 3 4 5 8 *Tr. I.* *Con moto.* 9 10 11 *ppp*

pp *accel.* 4 1

30 *Tempo I.* 11 *f* *f* *marcato*

Meno mosso. (♩ = 104) 5 31 18 32 13 11 33 17 *Tr. I.* 18 19 20 1

trm trm 1 *trm trm* 12 3 34 35 20 *p* *p* *mf* *dim.* *p* *p* *sf*

Tr. I. Tromb I. 36 21 22 23 24 25 26 27 28 *pp*

1 4 7 *sf*

Timpani.

III.

in C e A.

Adagio.

(♩ = 50)

poco rit. a tempo

Poco più mosso.

rit.

4 1 6 46 17 47 8 48 4

(Tromb. Tuba)

a tempo 2 rit. - - Tempo I. 4 49 50 12 51 Tromb. III.

(Tuba) 1 2 3 4 5

Tempo I. Cor. I. Viol. I.

5 52 14 53 12 54

mf dim. pp dim. pp

55

1 2 3 4 5 6 7

p cresc.

poco accel. rallent. -

56 2 6 Viol. I. Tempo I. 1 57 11

mf dim. pp pp

IV.

in Gis, H e Dis.

Allegro vivace. (♩ = 84 - 92)

18 19 58

f Tromb. III. Tuba f

2 9 59

sf dim. p

mf dim. p

60

p 5

61 2 17 62 5

p sf

Timpani.

79

pp

80 4

dim. p

81 10

f

82

mf < sff p

Glockenspiel

83

15

84

7

8

9

85

p Vel. pizz. pp.

mf dim.

p

poco cresc.

mf

cresc.

ff

rall

Clar. I. II.
Cor. I.

89

p cresc. f

Più mosso. 1

sf

90

sf

sf ff