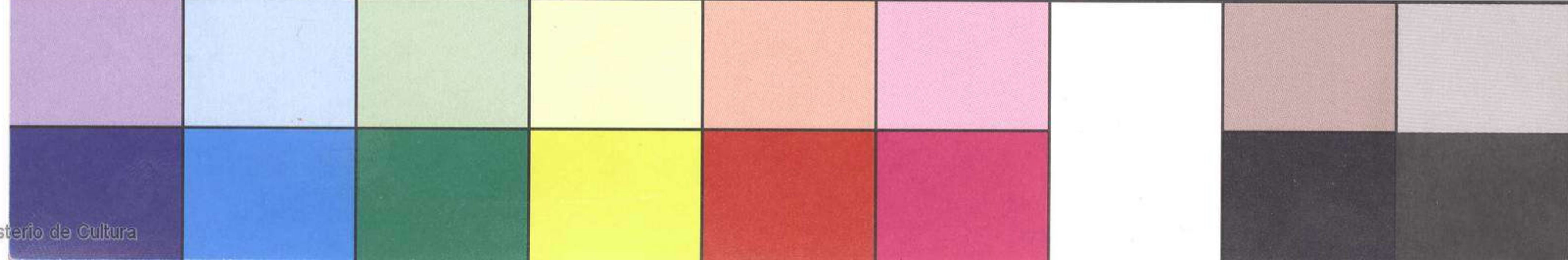
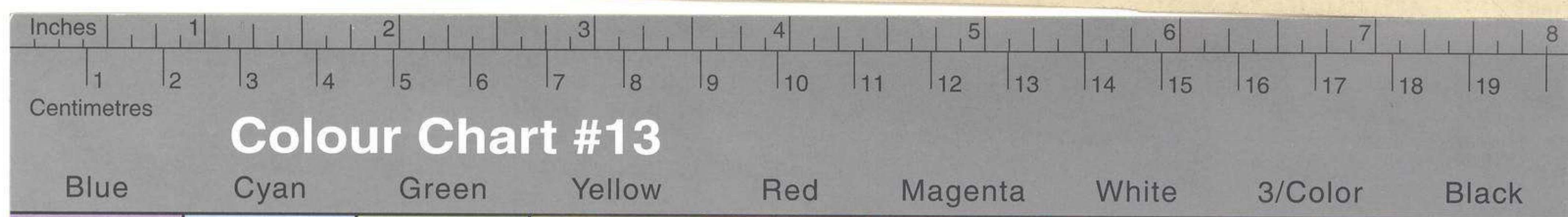


London Printed for Rob. Sayer & J. Bennett, Map & Print-sellers, N^o 53 in Fleet Street. Published as the Act directs 10 June 1775.



A MAP OF PENNSYLVANIA

EXHIBITING

not only THE IMPROVED PARTS of that PROVINCE, but also ITS EXTENSIVE FRONTIERS:

Laid down FROM ACTUAL SURVEYS, and Chiefly FROM THE LATE MAP of W. Scull Published in 1770;

And Humbly Inscribed

TO THE HONOURABLE THOMAS PENN AND RICHARD PENN ESQUIRES

TRUE AND ABSOLUTE PROPRIETARIES & GOVERNORS OF THE

PROVINCE OF PENNSYLVANIA

and the TERRITORIES thereunto belonging.

English Miles 69½ to a Degree.



