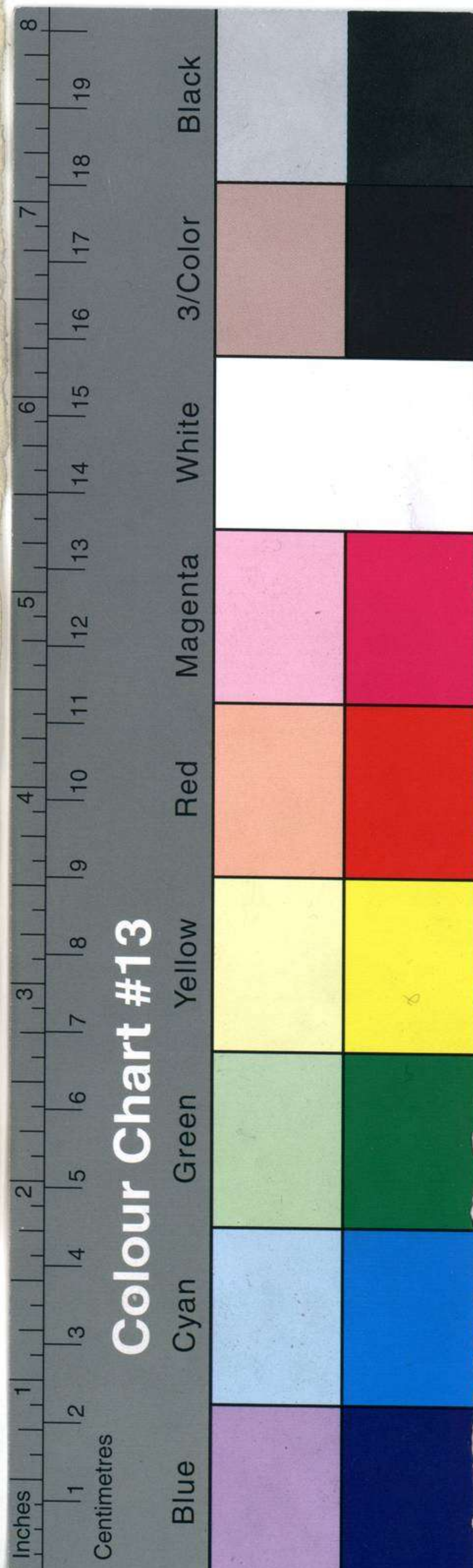
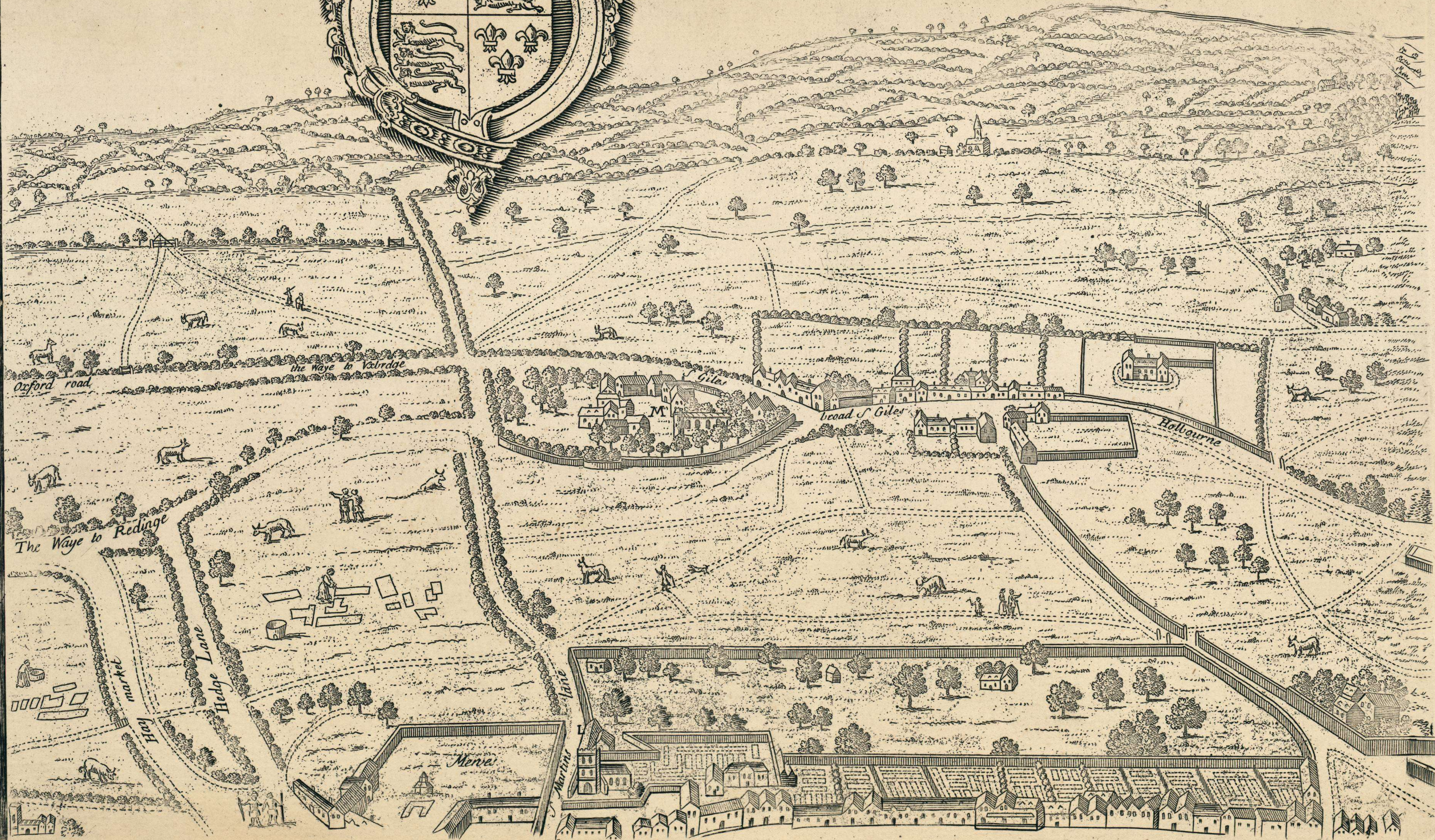
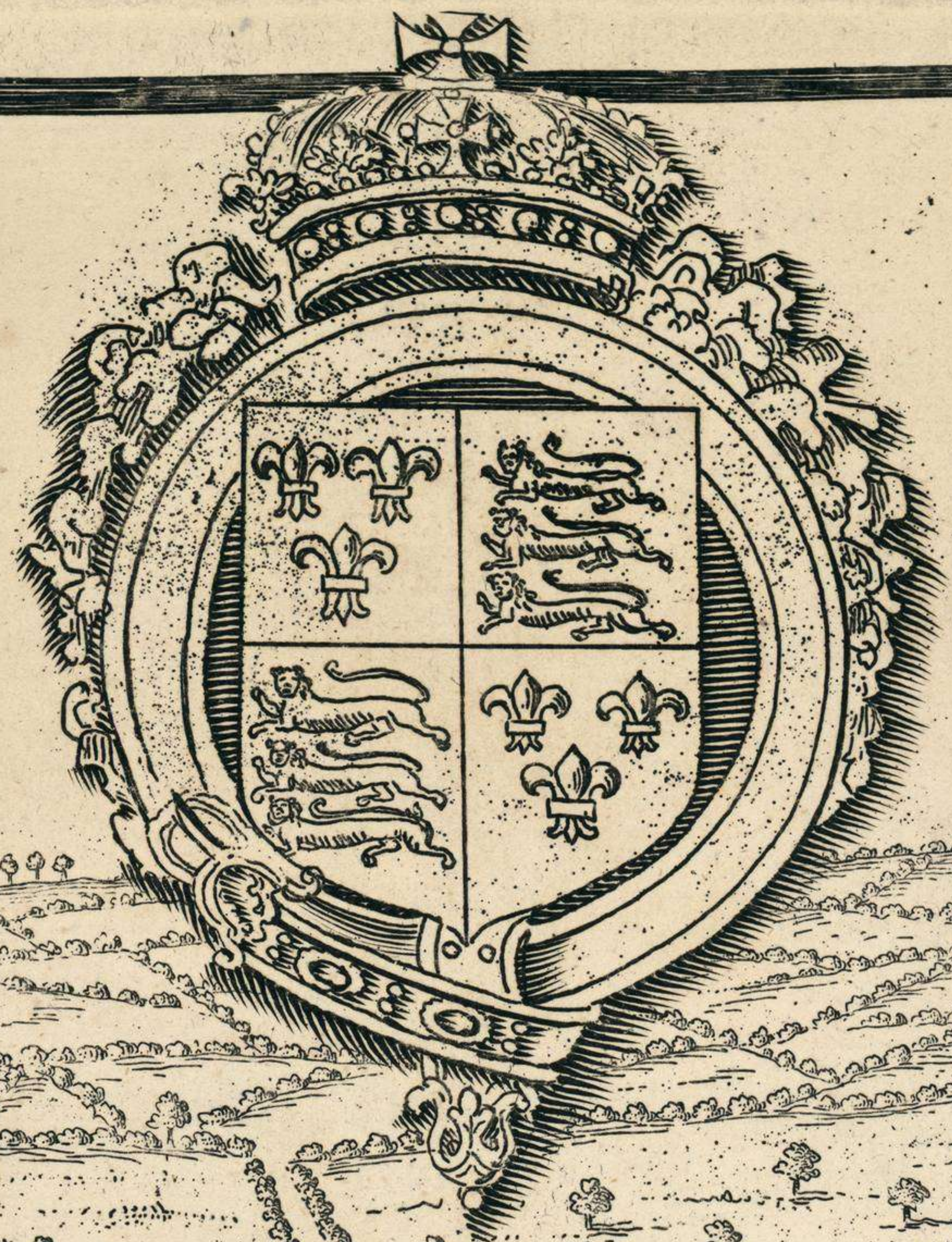


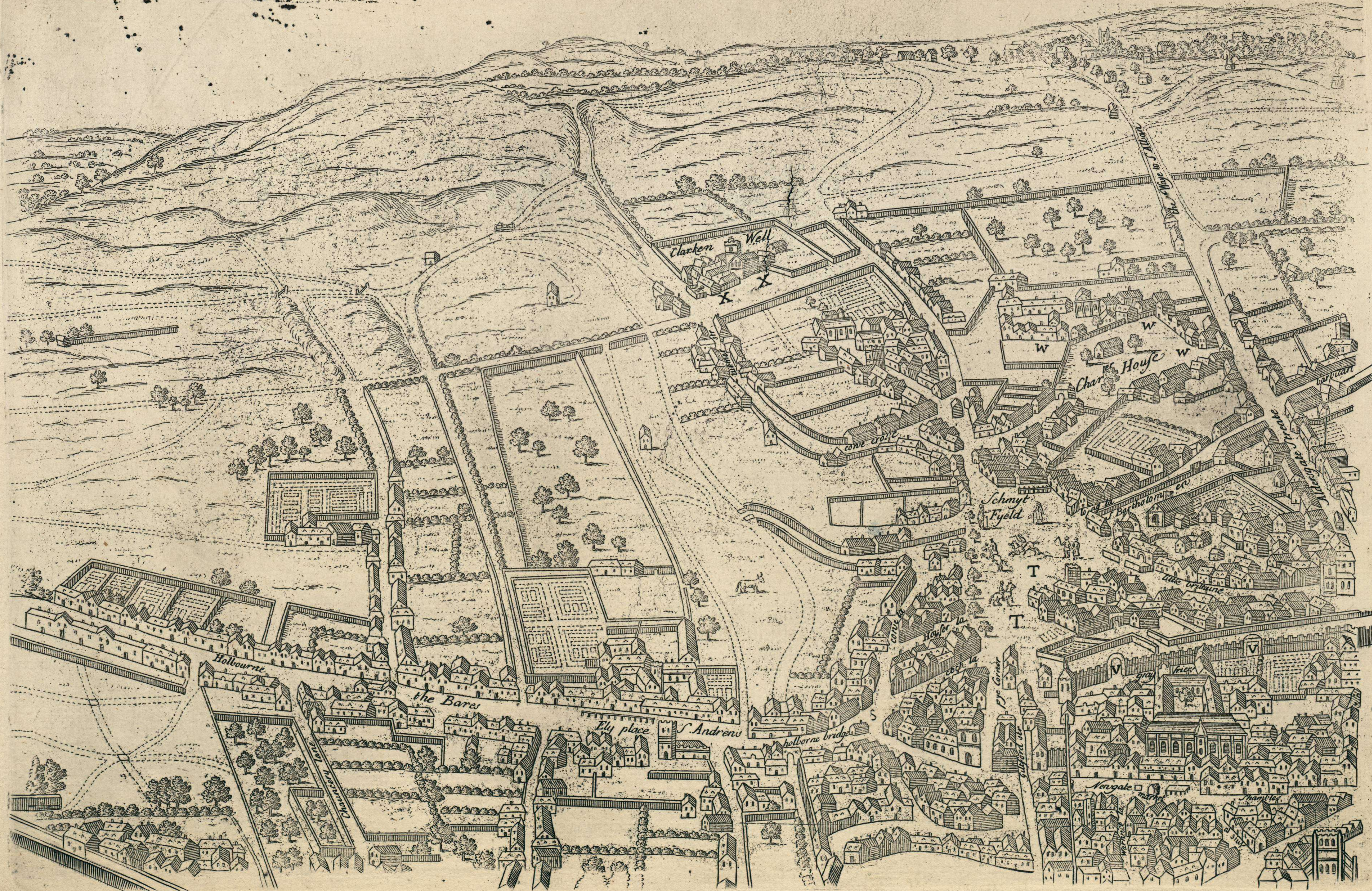
C. I. V. I



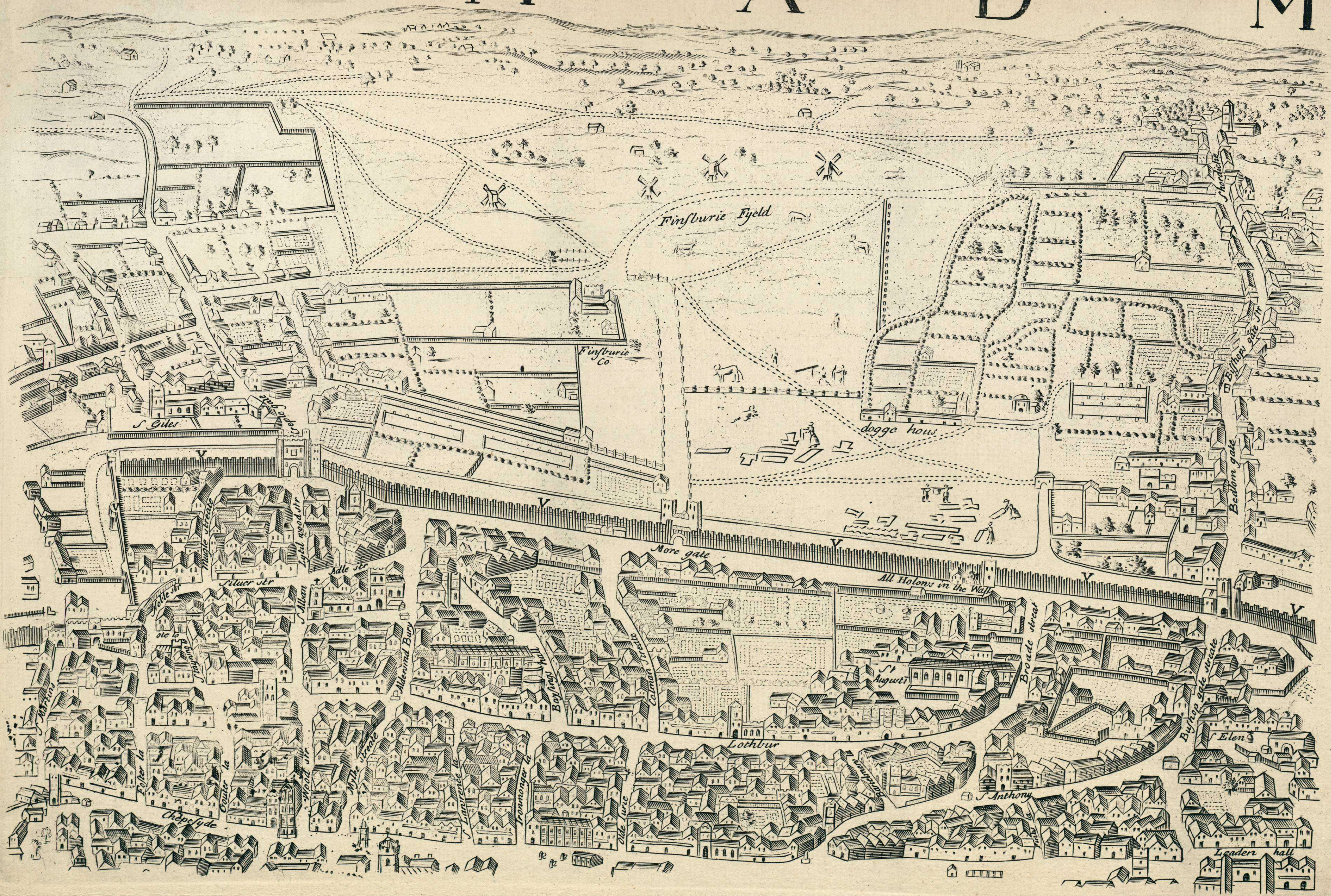
P. Shear

Colour Chart #13

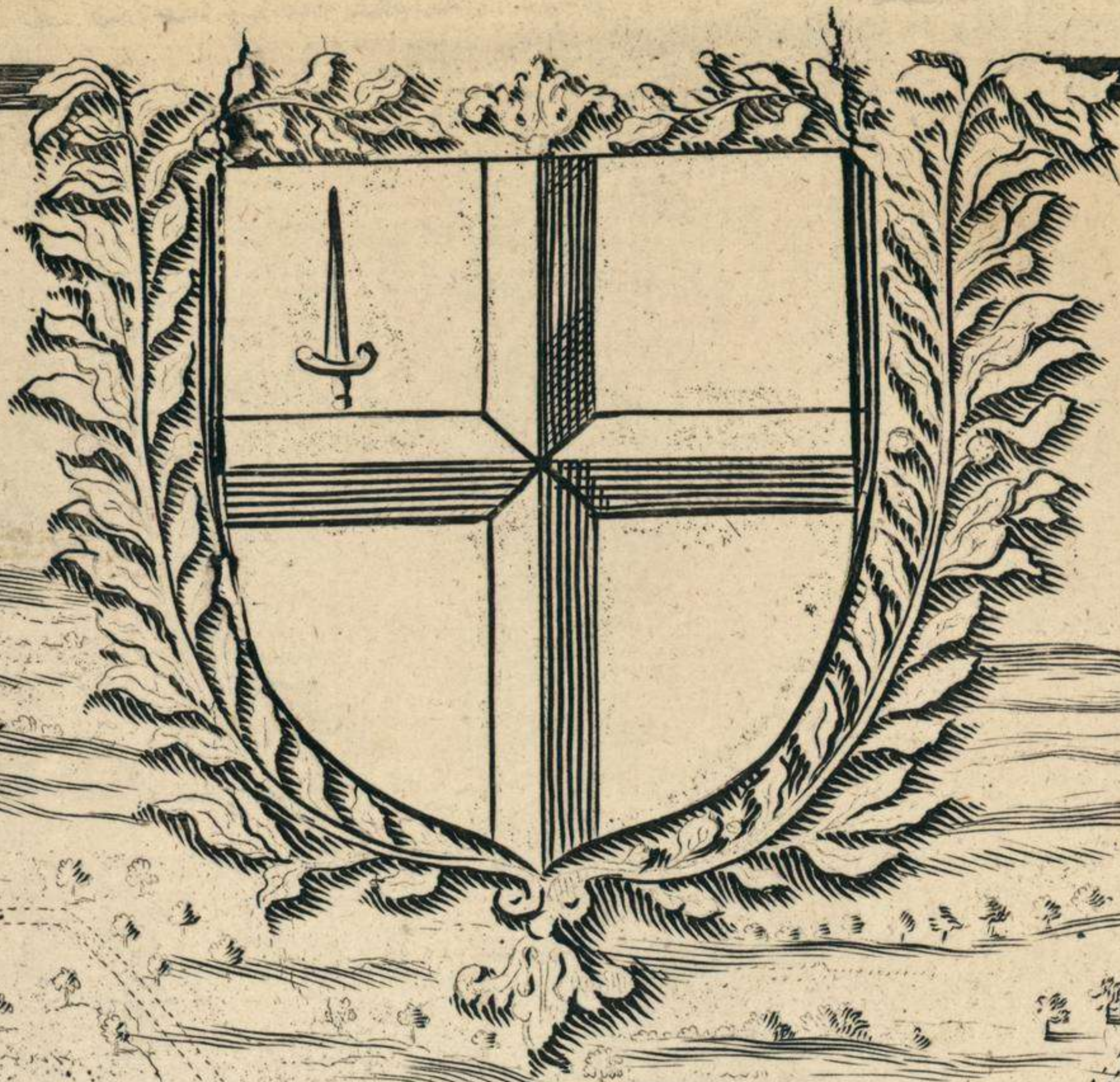
T A S L O N D I



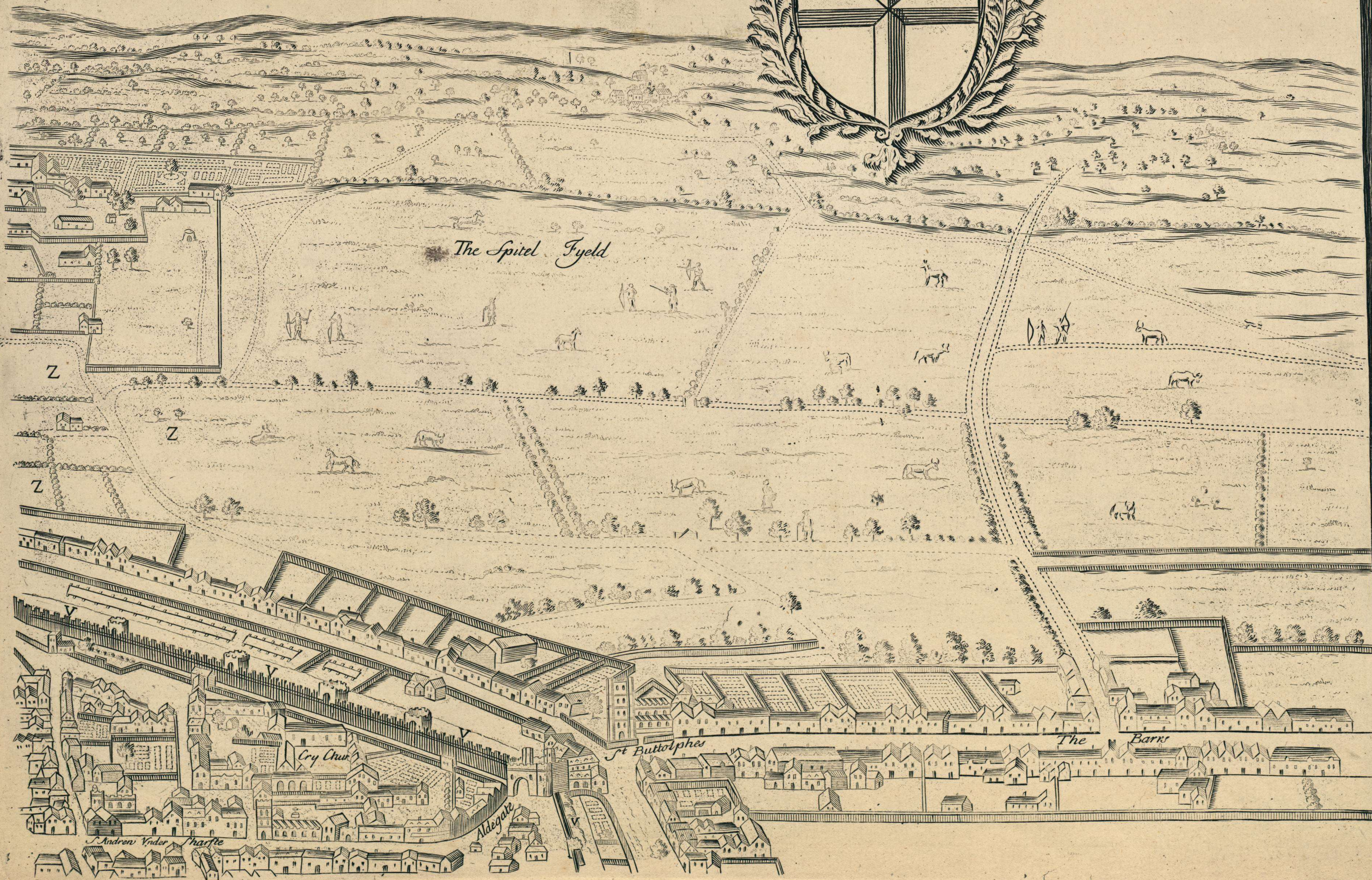
N V M A^{no} Dⁿⁱ CIRCITER M



D L X .



The Spitel Fyeld



Z

Z

Z

Cry Chur

St Buttolphes

The Barre

St Andrew Under Tharffe

Ale gate

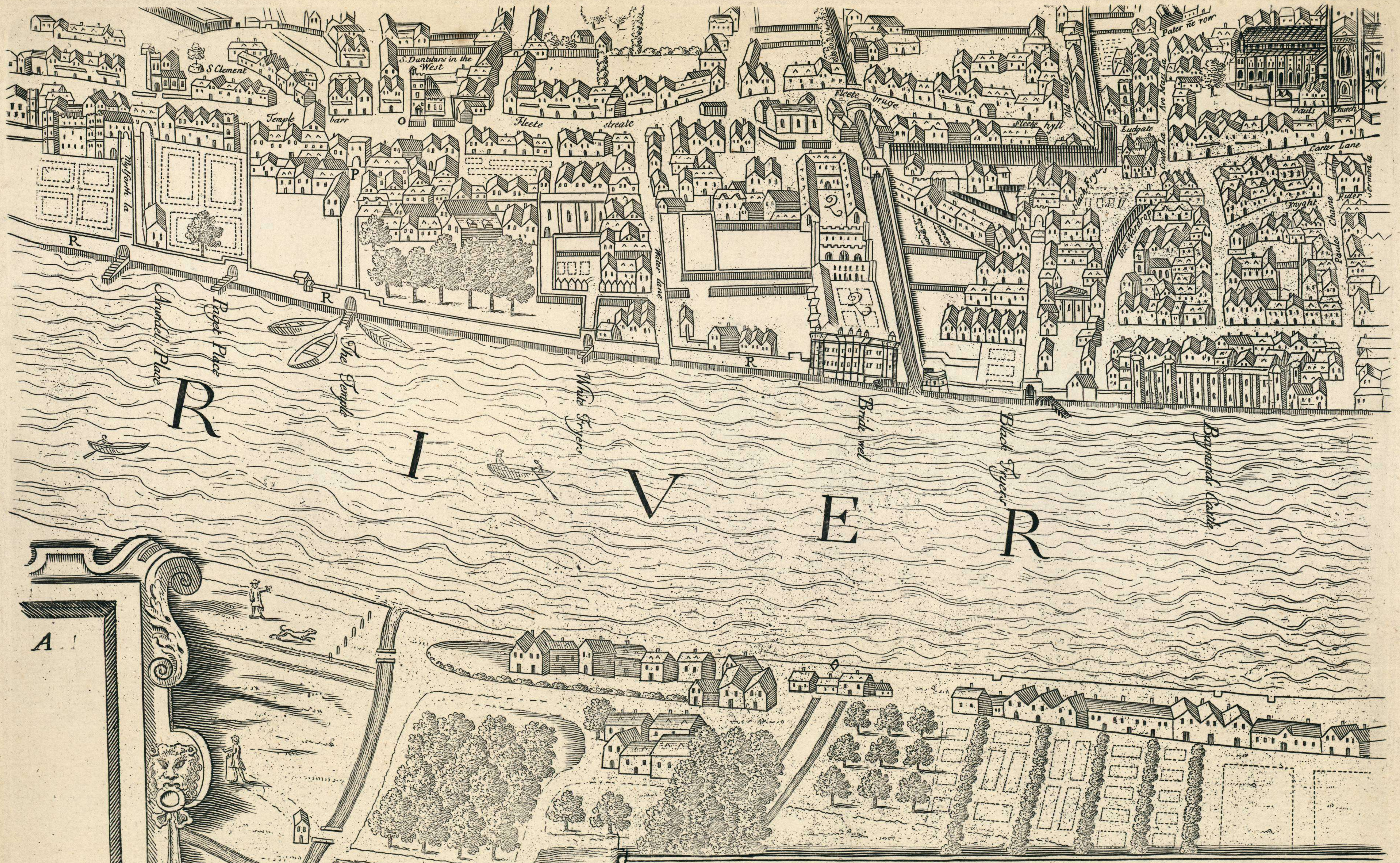


LONDINVM ANTIQV

This PLAN shewes the ancient extent of the famous Cities of LONDON and WESTMINSTER as it was near the beginning of the Reign of Queen Elisabeth these Plates for their great scarcity are re-ingrav'd to Oblidge the Curious and to hand to Posterity this Old Prospect Whereby at one vein may be seen how Much was built of this populow CITY and parts adjacent at that time

Radulphus Aggas in his *Osonie Antiqua* published A.D. 1578 says Near ten years past the Author made a doubt whether to print or lay this work aside Untill he first had LONDON platted out

- These Remarkable Buildings were not Erected when y^e plan was taken
- * The Whitehall Banqueting House y^e 1st Build^g was of Timber A^{no}
 - * The Royal Exchange (not built) before 1570
 - * Moor Feilds not divided nor planted
 - * Lambs Conduit on Iron hill about 1580
 - * Paget Place so called till the Death of Lord Paget An^o 1563



Verue Soc. Antiq. Lond.
excudit 1737.

To Observe the Remarkable Places Buildings Streets Ways &c in this Old Map

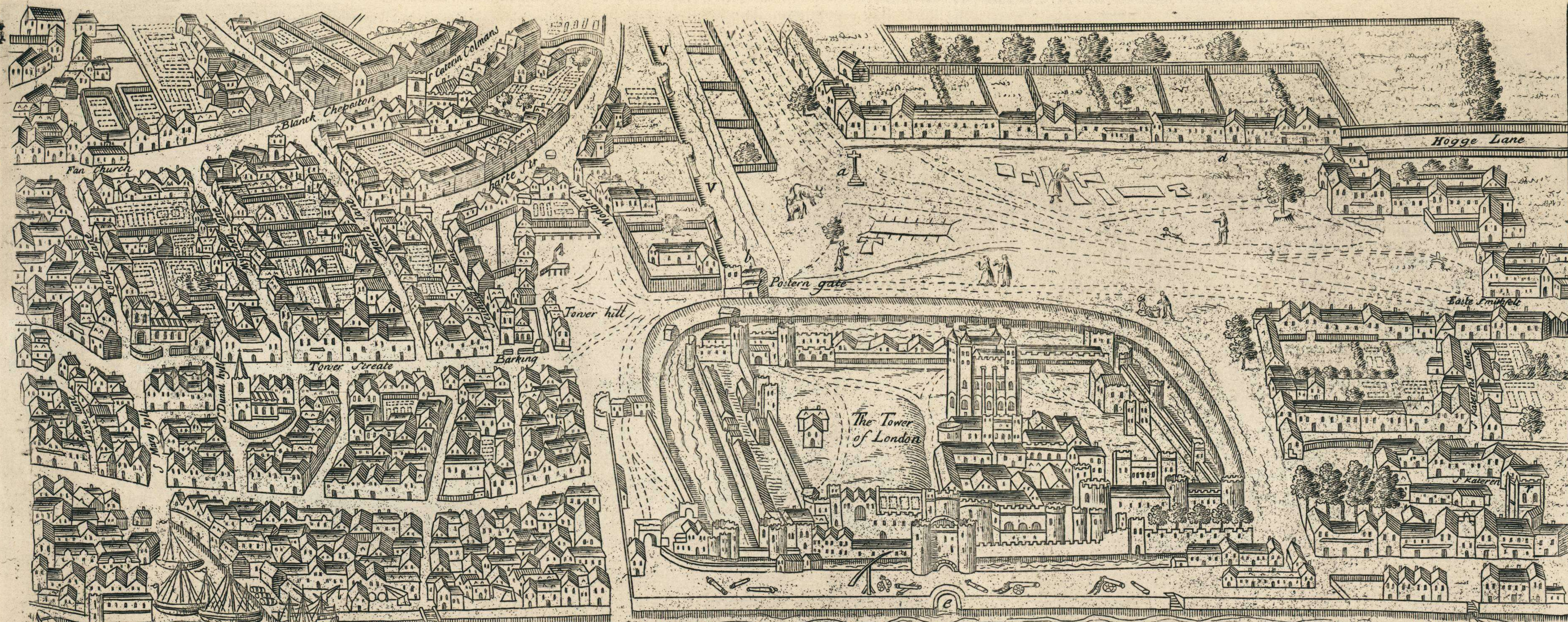
- | | | | | |
|--------------------|-----------------|----------------------|--------------------|-------------------------|
| A St. Margarets | E PALACE Gates | I St. Mary Rouncival | N Strand bridge | RRR Walls along y river |
| B Fountain | F Gates | K Spring Garden | O St. Dunstons | S Snow hill |
| C Clock Tower | G Cock pit | L St. Martins | P Temple Gate | T Smith Feild |
| D Parliament House | H Queens Garden | M St. Giles | Q Bridewell Palace | VVV City Walls |



see Letter . A . B . C . D . E .

- | | |
|------------------|---------------------------------|
| W Charter House | a Minorias Croft |
| X Clerken Well | b Tower Hill Postern |
| Y Barbican Croft | c S ^t Katherins Gate |
| Z Spittle Feild | d East Minster |





Tower Bridge
 London Bridge
 Nonsuch House
 St Mary Overys
 St Tonles
 Battle Bridge
 Winchester Pl.
 Bear Baiting
 Bull Baiting
 Paris Garden
 Arch. Bp. Palace
 Lambeth Church and Marsh
 St Kathrines Ch.

