



KALMUS ORCHESTRA LIBRARY

DONIZETTI

LA FILLE DU REGIMENT

BASSOON II

EDWIN F. KALMUS
PUBLISHER OF MUSIC
NEW YORK, N. Y.

La Fille du Regiment

DONIZETTI

OUVERTURE

Larghetto 4 1 3

4 2 VLN. I

Allegro 2 1 f f

3 18

4 *Allegro* 15 VLN. I p rit. 5

5 19 FAG. I p cresc.

6

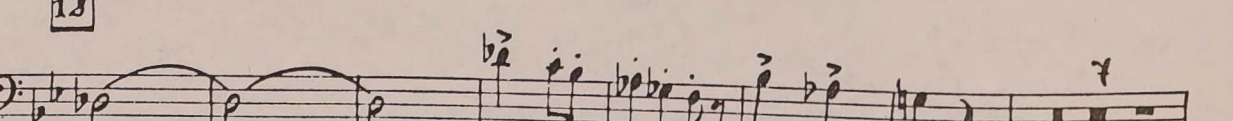
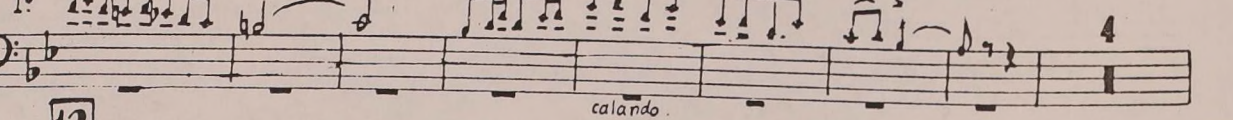
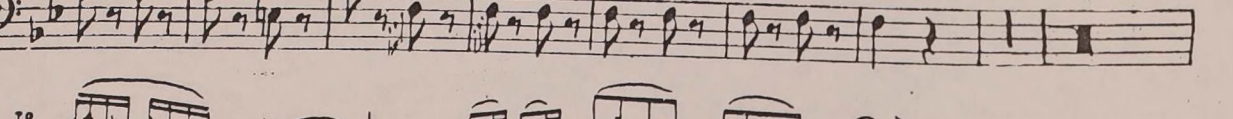
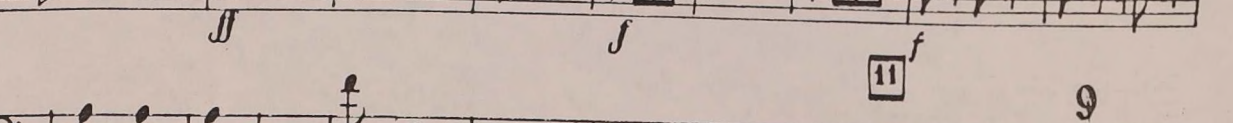
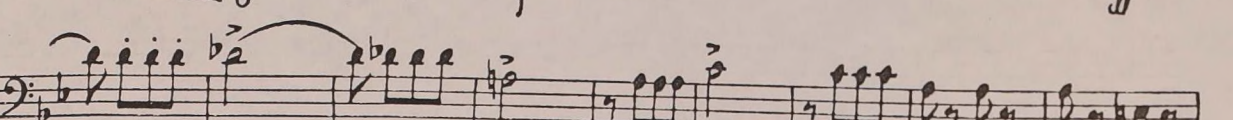
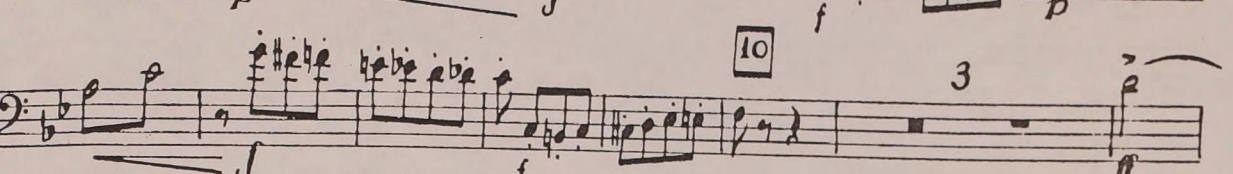
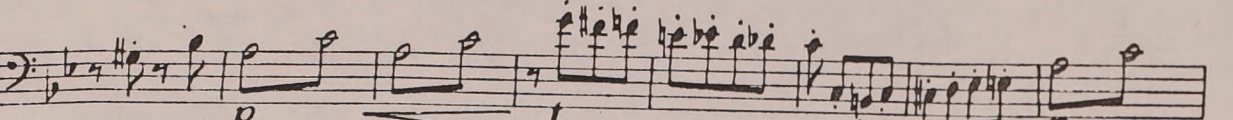
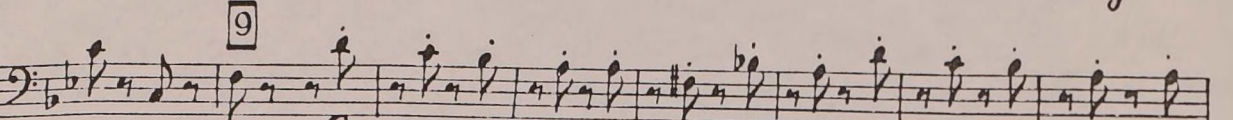
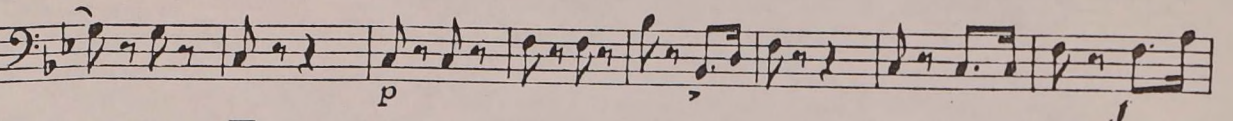
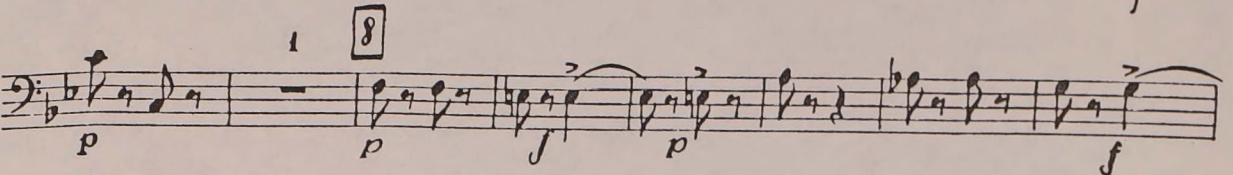
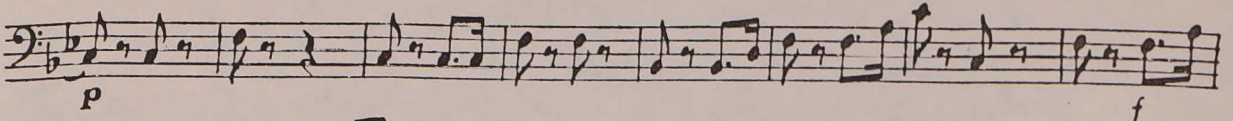
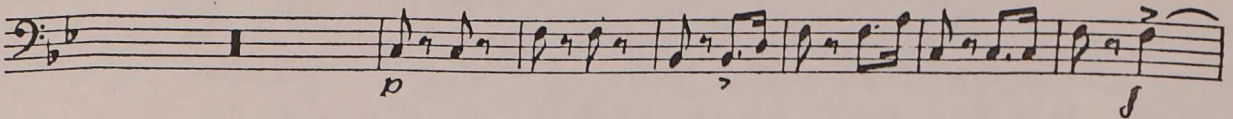
FP

7

EDWIN F. KALMUS

PUBLISHER OF MUSIC
NEW YORK, N. Y.

4



First staff of music, bass clef, key signature of two flats. Dynamics: *f* (forte) at the beginning and end of the staff.

Second staff of music, bass clef, key signature of two flats. Dynamics: *f* (forte) at the beginning.

Third staff of music, bass clef, key signature of two flats. Includes a boxed measure number **13** and a dynamic marking *p* (piano).

Fourth staff of music, bass clef, key signature of two flats. Dynamics: *f* (forte) and *p* (piano) markings.

Fifth staff of music, bass clef, key signature of two flats. Dynamics: *f* (forte) and *p* (piano) markings. Includes a boxed measure number **14**.

Sixth staff of music, bass clef, key signature of two flats. Dynamics: *f* (forte) and *p* (piano) markings.

Seventh staff of music, bass clef, key signature of two flats. Dynamics: *f* (forte) and *p* (piano) markings. Includes a boxed measure number **15**.

Eighth staff of music, bass clef, key signature of two flats. Dynamics: *p* (piano) and *sim* (sustained) markings.

Ninth staff of music, bass clef, key signature of two flats. Dynamics: *p* (piano) marking.

Tenth staff of music, bass clef, key signature of two flats. Includes a boxed measure number **16**, a triplet marking **3**, and a *v.s.* (ritardando) marking at the end.

4

pp **17** *f*

p

cresc

ff **18** *Più mosso* *f*

ff

f

19

ff *Bub*

No 1 PRELUDE

Andante mosso 29

20 *Larghetto*

al *al* *FAG. I*

calancio *fz > p* 8

presez