

S

Violin S^o

185

Doloris =

Sota

Bretton



(5)

LA DOLORES

Fizz

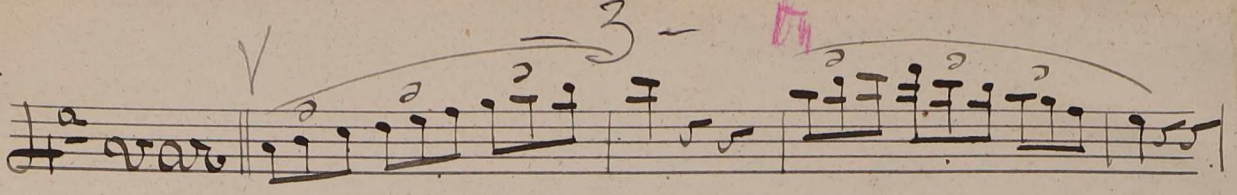
VE 1°

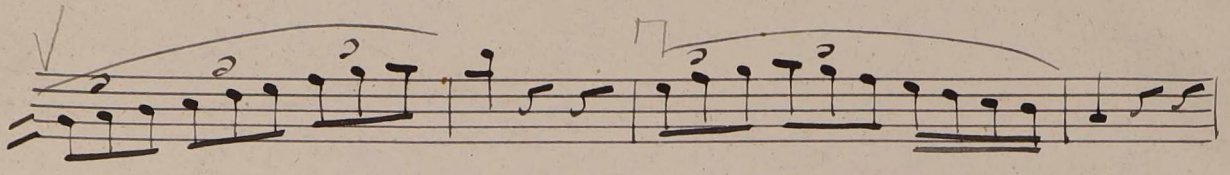
Tempo di Sota //

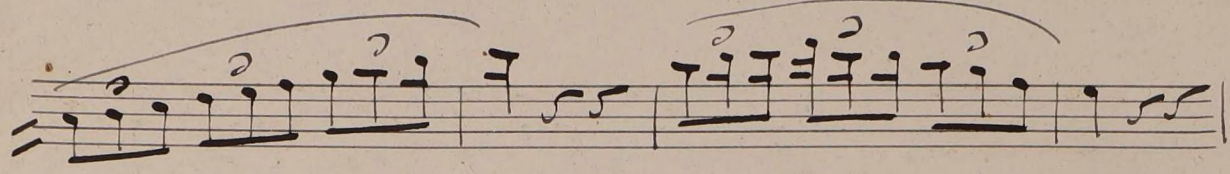
Arco

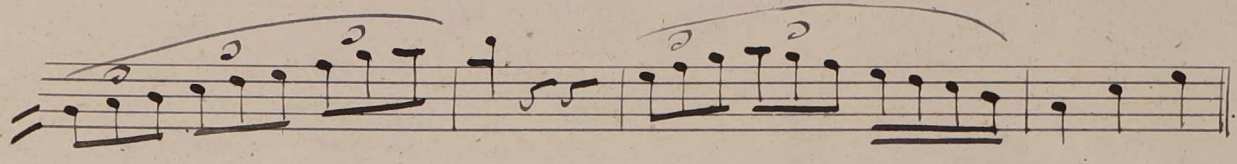
eres - en - na - do

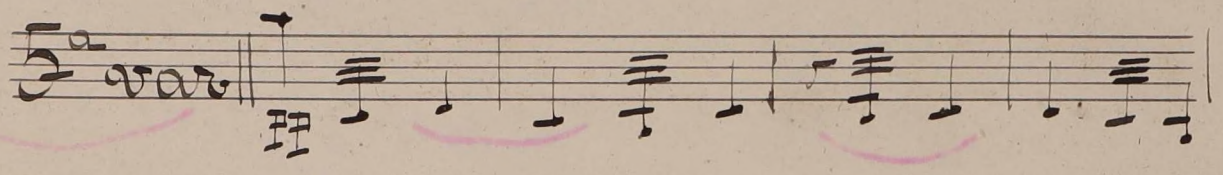
La var

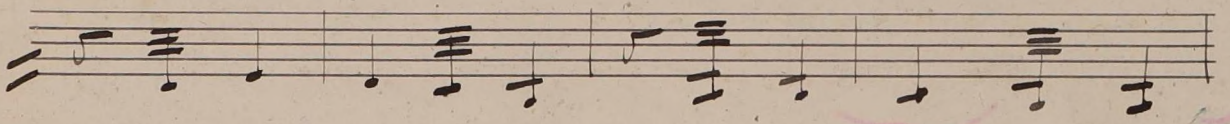
1^a var 

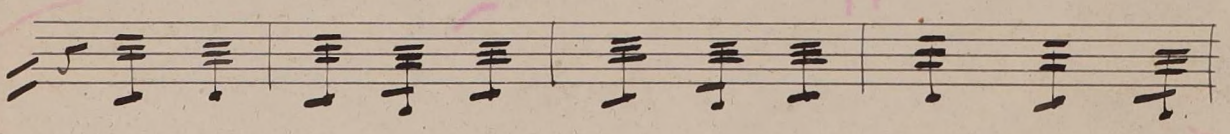


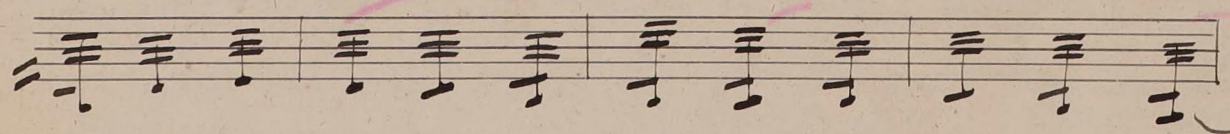


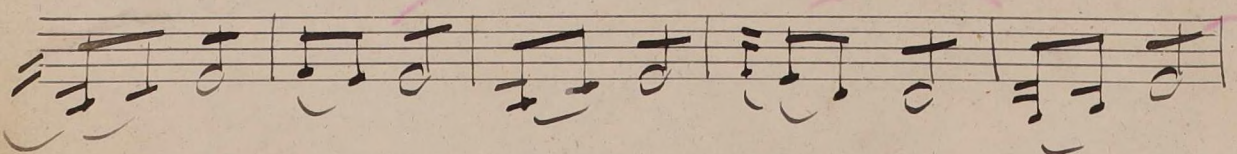


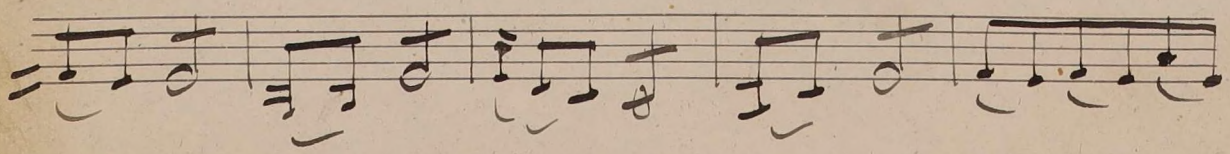
5^a var 

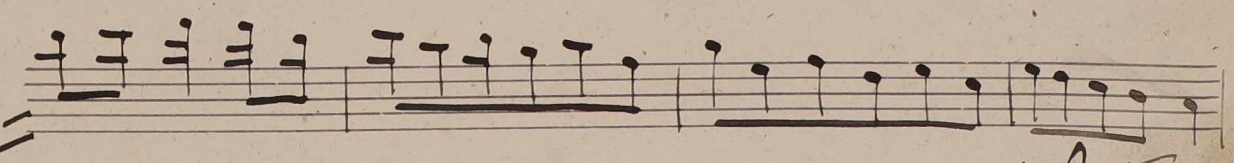
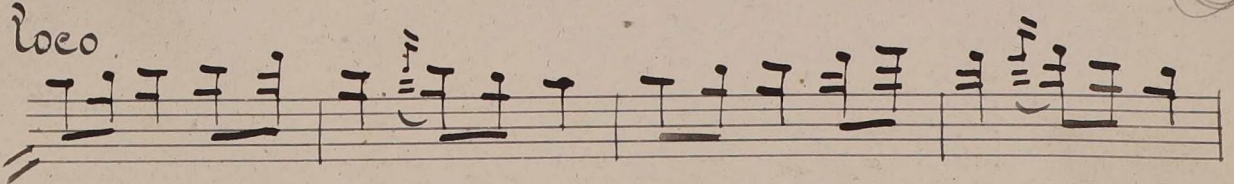
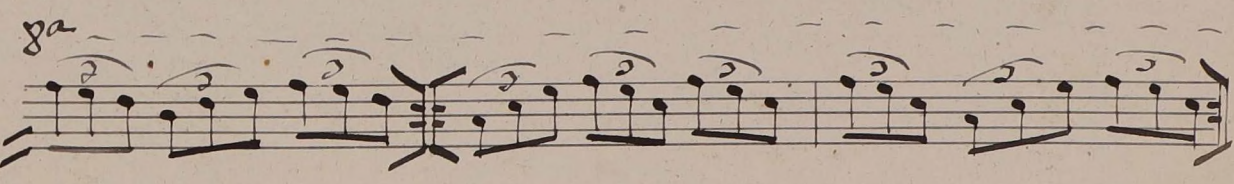
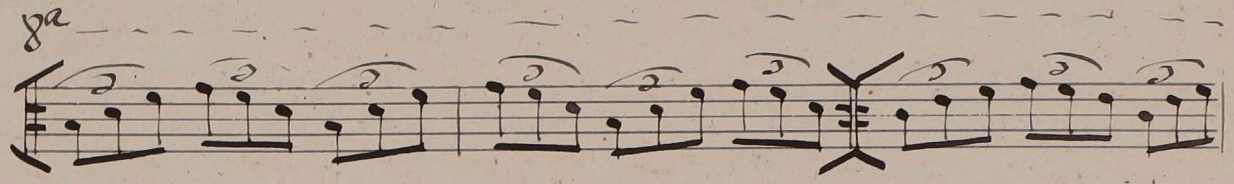
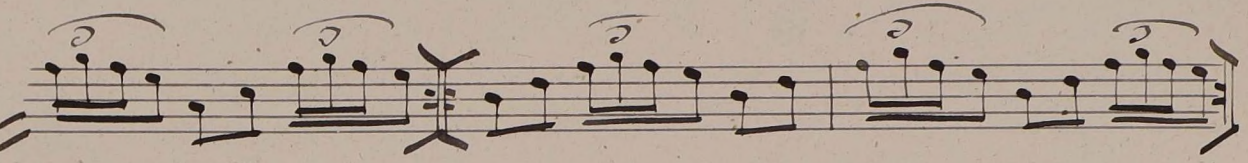
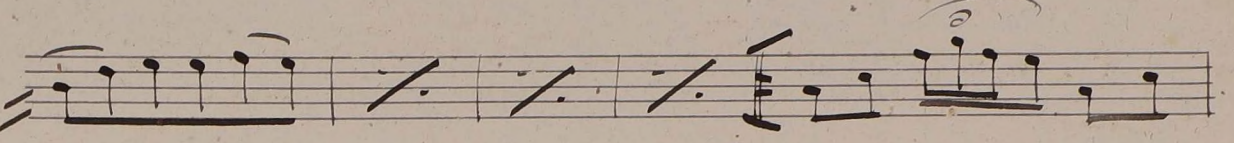
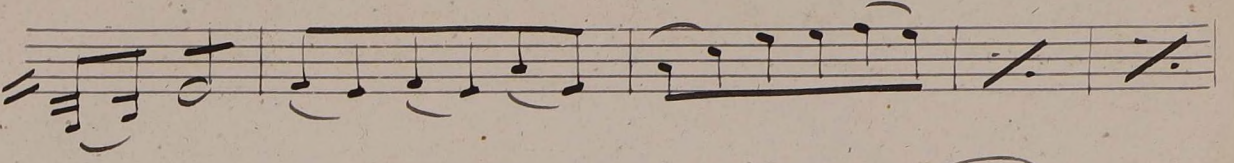
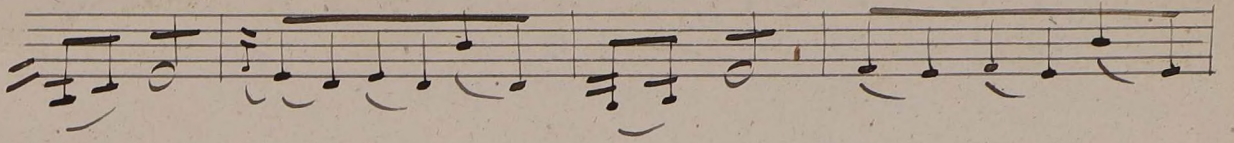












Ysto

Handwritten musical notation on a five-line staff. It features a sequence of notes, some beamed together. A circled section contains the notes G, A, B, C, D, E, F, G, with the letters 'G A B C' written below it. Above the staff, there is a handwritten number '5' with a line pointing to the circled section.

Handwritten musical notation on a five-line staff, continuing the sequence of notes from the previous staff.

Handwritten musical notation on a five-line staff. It includes a dynamic marking 'ga' and a red checkmark above a note.

Handwritten musical notation on a five-line staff. It includes a dynamic marking 'ga' and a red checkmark above a note.

Handwritten musical notation on a five-line staff. It includes a dynamic marking 'ga' and a red checkmark above a note.

Handwritten text: *es* and *du* written below the staff.

Handwritten musical notation on a five-line staff. It begins with the word 'Copla' in a large, decorative script. Above the word is the marking 'loco' and below it is 'pizz'. The notation consists of a series of notes, some of which are slanted.

Handwritten musical notation on a five-line staff, featuring a series of slanted notes.

Handwritten musical notation on a five-line staff, featuring a series of slanted notes.

Handwritten musical notation on a five-line staff, featuring a series of slanted notes.

Handwritten musical notation on a five-line staff. It includes the word 'arco' above the staff and '6^a var' below it. The notation shows a series of notes, some of which are slanted.

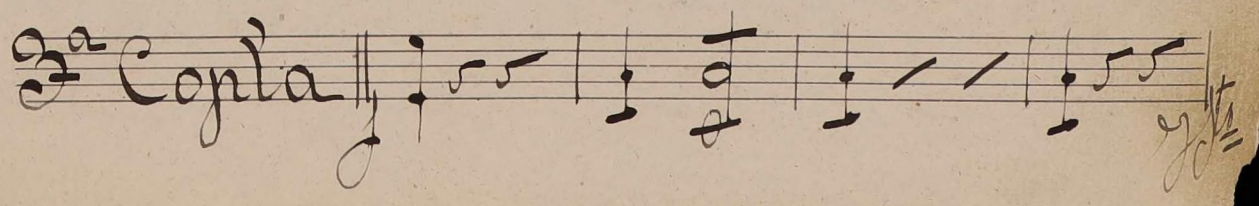
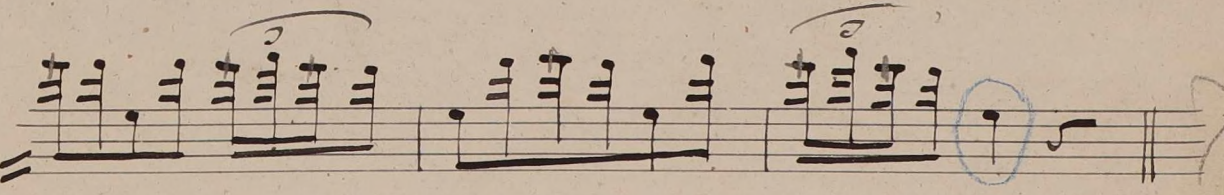
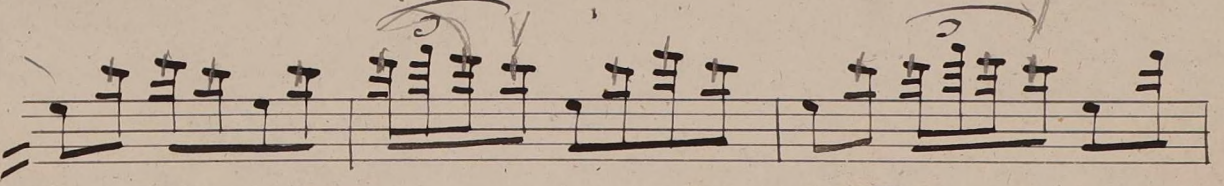
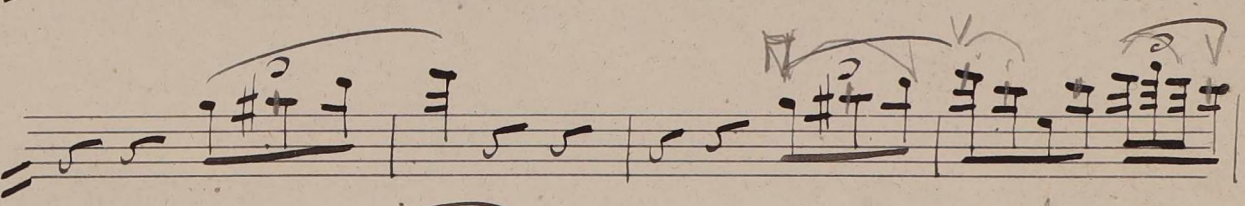
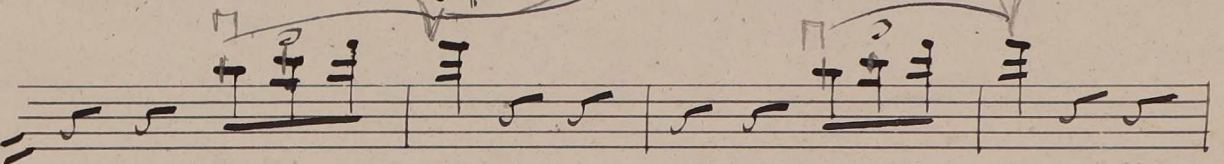
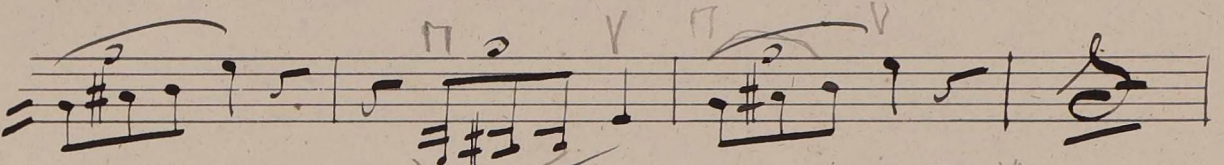
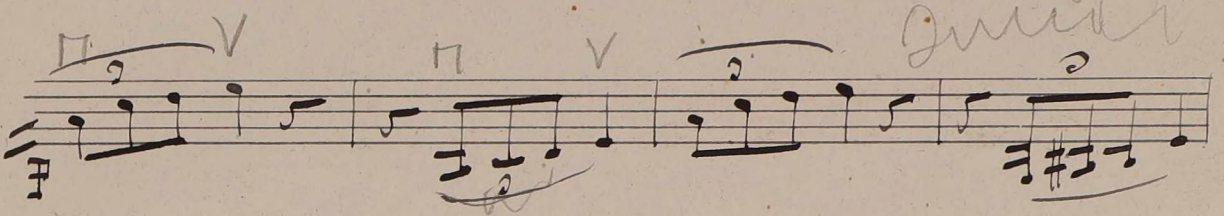
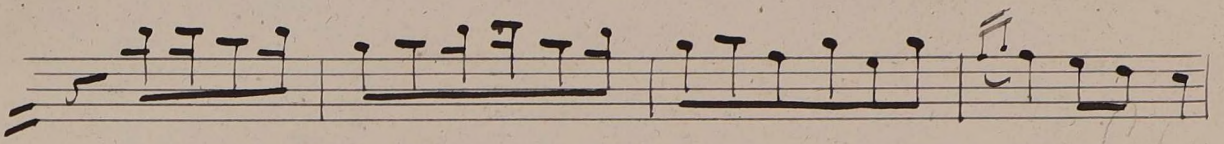
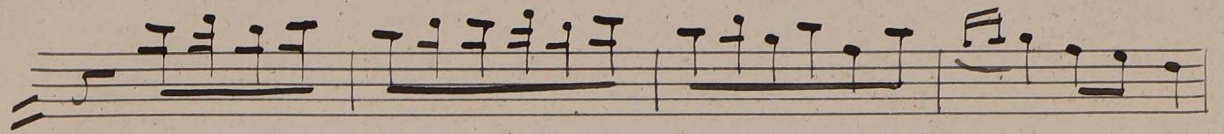
muy ligado

[Handwritten signature]

Handwritten musical score consisting of four staves. The first staff features a melodic line with a fermata over a measure and a '+' sign above it. The second and third staves contain melodic lines with slurs and accents. The fourth staff shows a bass line with chords and a final double bar line.

Handwritten musical score for the second system, starting with the text "2^a Copla" and "Ficc" above the first staff. The first staff begins with a treble clef, a key signature of one flat, and a common time signature. The subsequent staves contain rhythmic patterns, including slurs and accents, with some notes marked with dots.

Handwritten musical score for the third system, starting with the text "Arco" above the first staff. The first staff contains a melodic line with slurs and accents, followed by a double bar line. The second staff continues the melodic line with slurs and accents.



Handwritten musical notation on a single staff, featuring various note values and rests.

Handwritten musical notation on a single staff, including a dynamic marking *ten* above the staff.

Handwritten musical notation on a single staff, showing rhythmic patterns and note placement.

Handwritten musical notation on a single staff, featuring a dynamic marking *al* above the staff.

Handwritten musical notation on a single staff, including a dynamic marking *subito* below the staff.

Handwritten musical notation on a single staff, showing a sequence of notes and rests.

Handwritten musical notation on a single staff, featuring a melodic line with slurs.

Handwritten musical notation on a single staff, including a dynamic marking *cresc* below the staff.

Handwritten musical notation on a single staff, showing rhythmic patterns and note placement.

Handwritten musical notation on a single staff, featuring a complex rhythmic pattern with slurs and accents.

ga = 10 =

Handwritten musical staff with notes and slurs. The notes are mostly eighth and sixteenth notes, with some beamed together. There are several slurs over the notes.

Handwritten musical staff with notes and slurs. Similar to the first staff, it contains eighth and sixteenth notes with various slurs.

Handwritten musical staff with notes and slurs. Continues the melodic line with eighth and sixteenth notes.

Handwritten musical staff with notes and slurs. The notation includes some rests and slurs.

Handwritten musical staff with notes and slurs. The notes are more widely spaced, possibly indicating a change in tempo or a different rhythmic pattern.

Handwritten musical staff with notes and slurs. This staff shows some scribbled-out or heavily crossed-out notation, possibly indicating a correction or deletion.

Handwritten musical staff with notes and slurs. The notation is clearer here, showing eighth and sixteenth notes.

Handwritten musical staff with notes and slurs. The staff begins with a treble clef and a key signature of one sharp (F#).

Empty musical staff.

Empty musical staff.

Empty musical staff.