



(RM)

Site

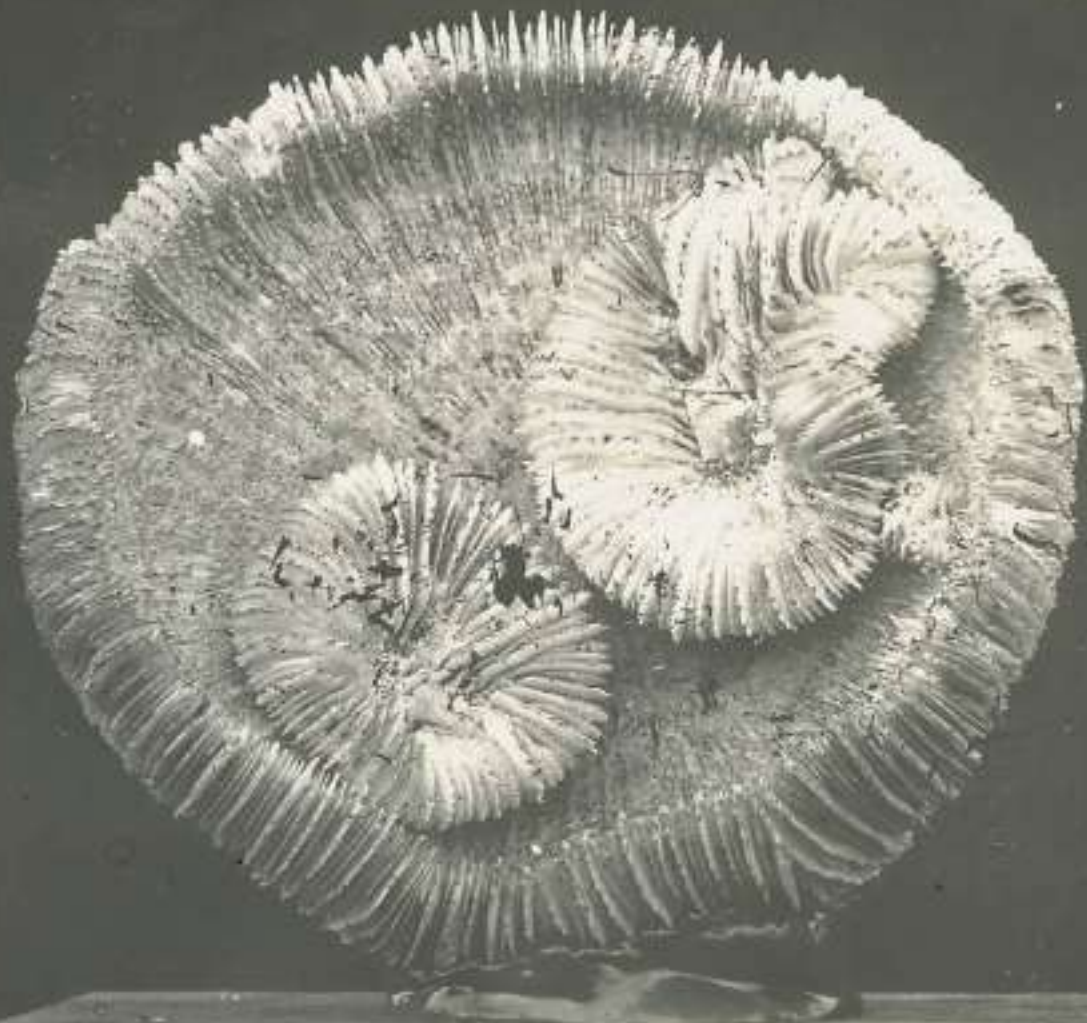
N°

96

*Vijahomayaloo*

N°

(RM)

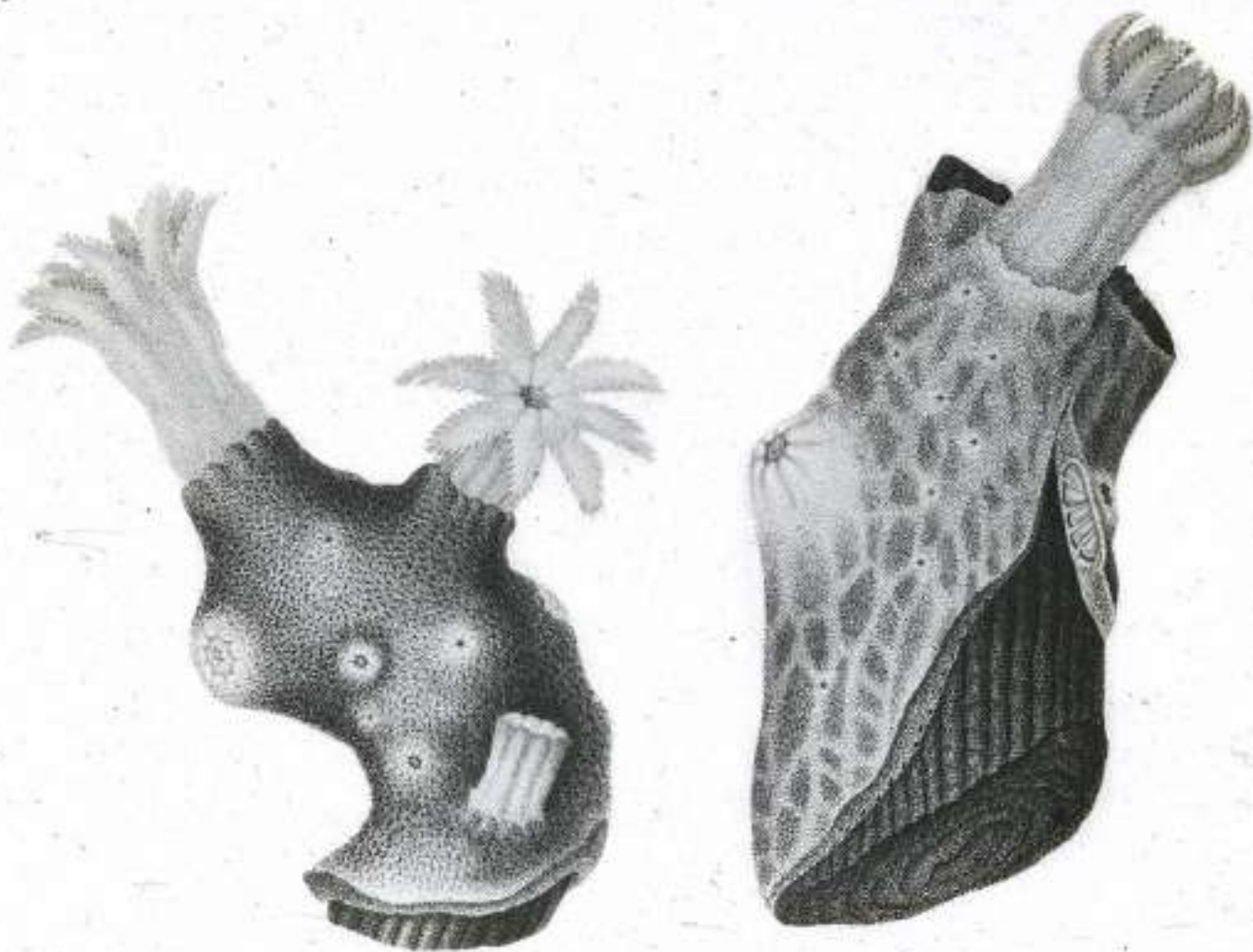


*Junqia confertifolia*.  
Müll. Arg. in J. Hb. Meis.  
*Junqia agariciformis* (Coll. Lam.)  
Lam.

RM

Sl.  
N<sup>o</sup> 19

Maddyson

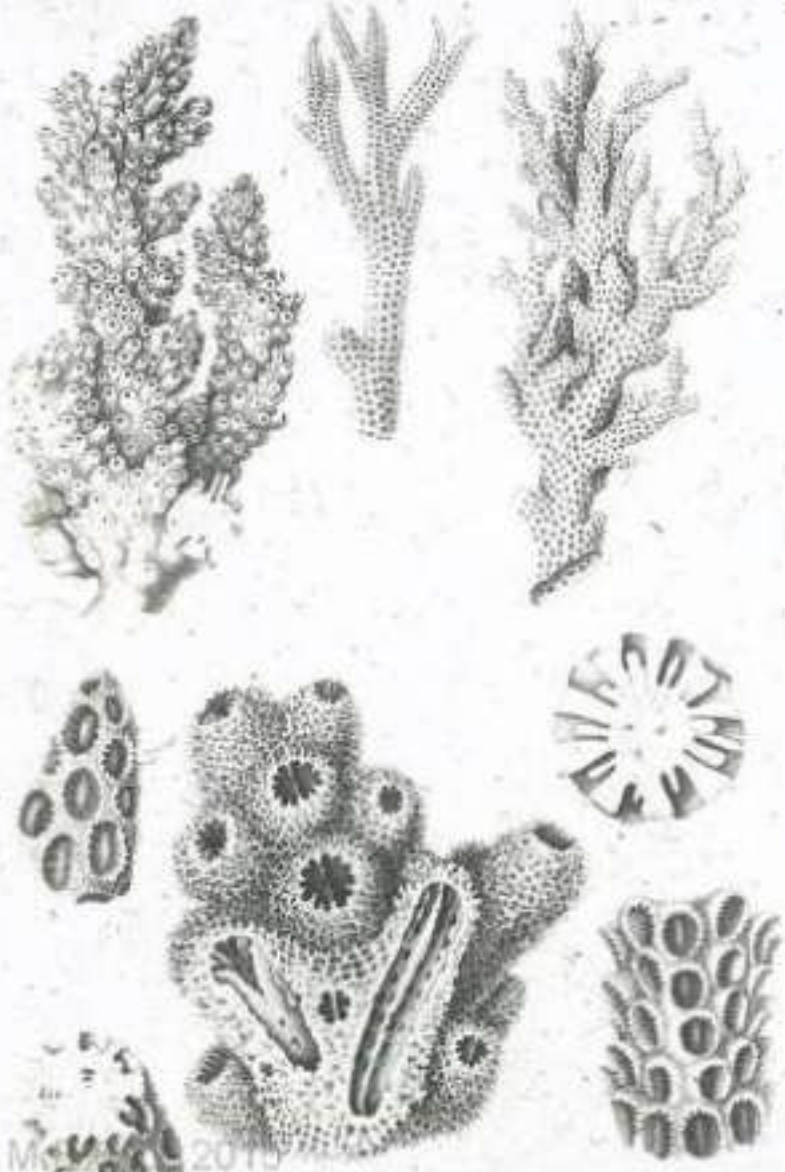


RM

S<sup>to</sup> 9  
M<sup>o</sup> 1

Cornell





RM

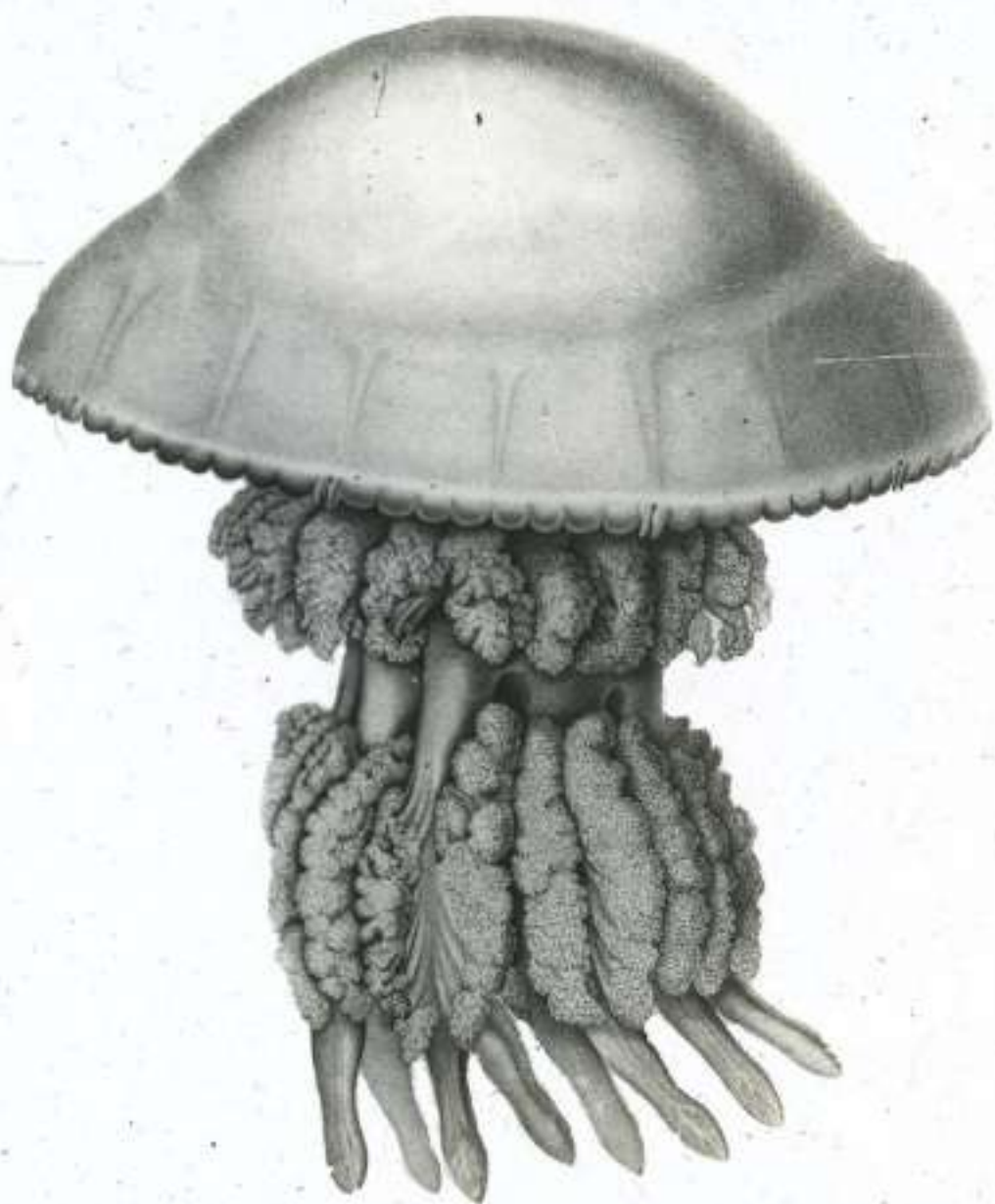
Sl.  
No.

2

Madhyama

S: 2N° 2 M





R M

Sia

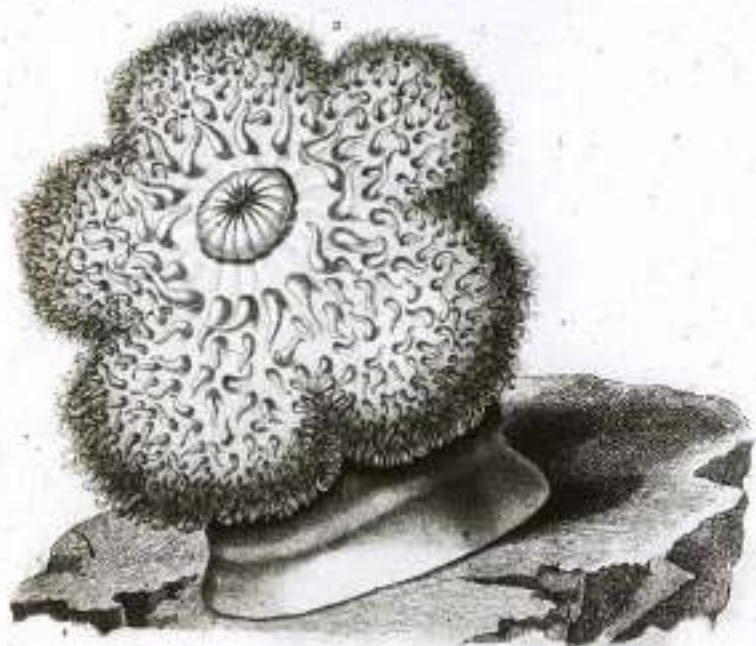
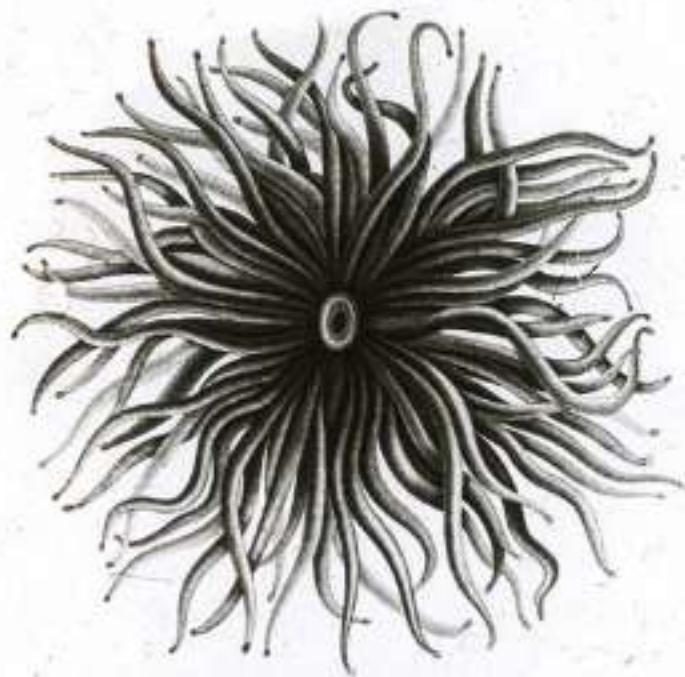
9

N<sup>o</sup>

7

*Medusa*

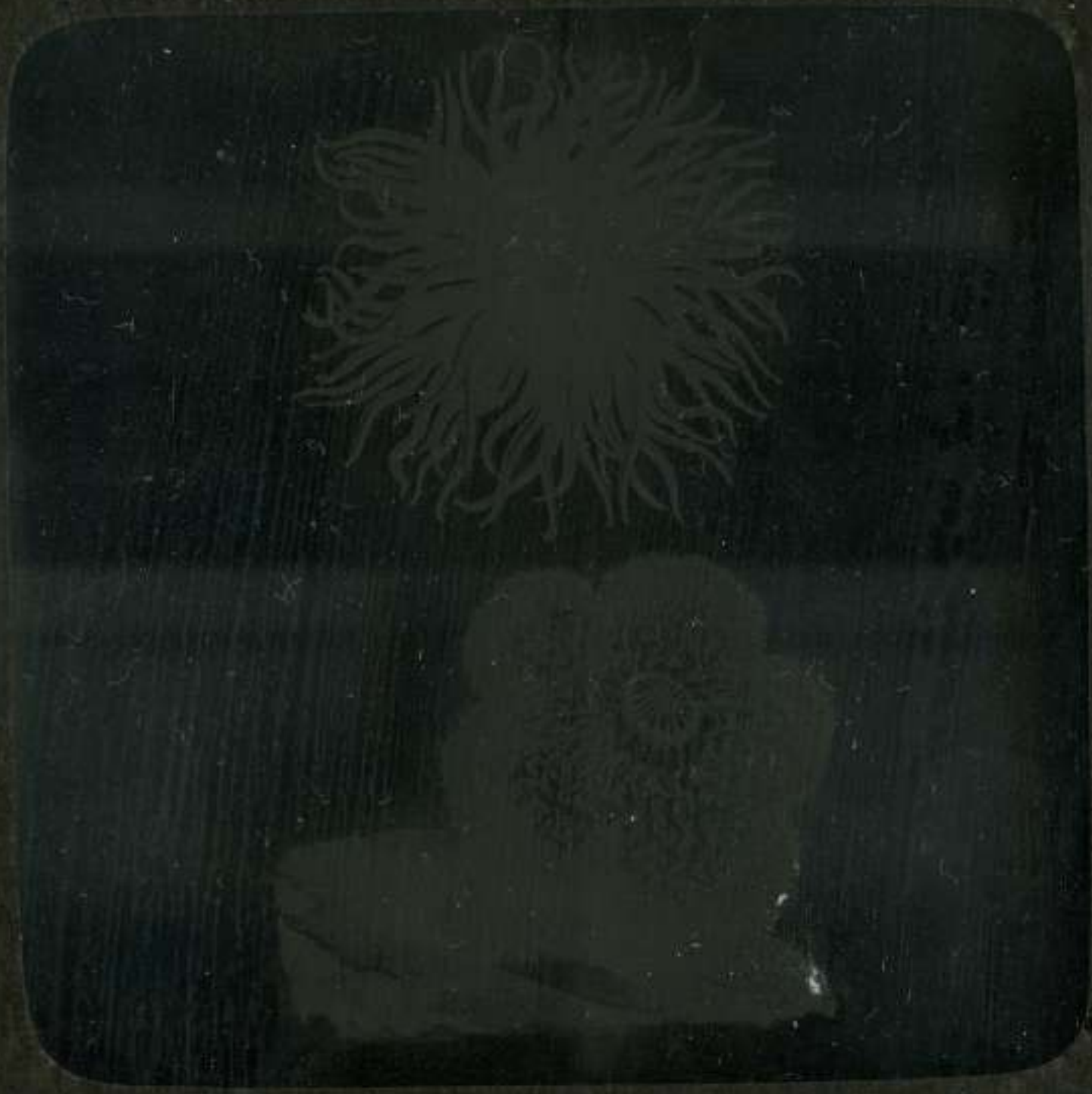


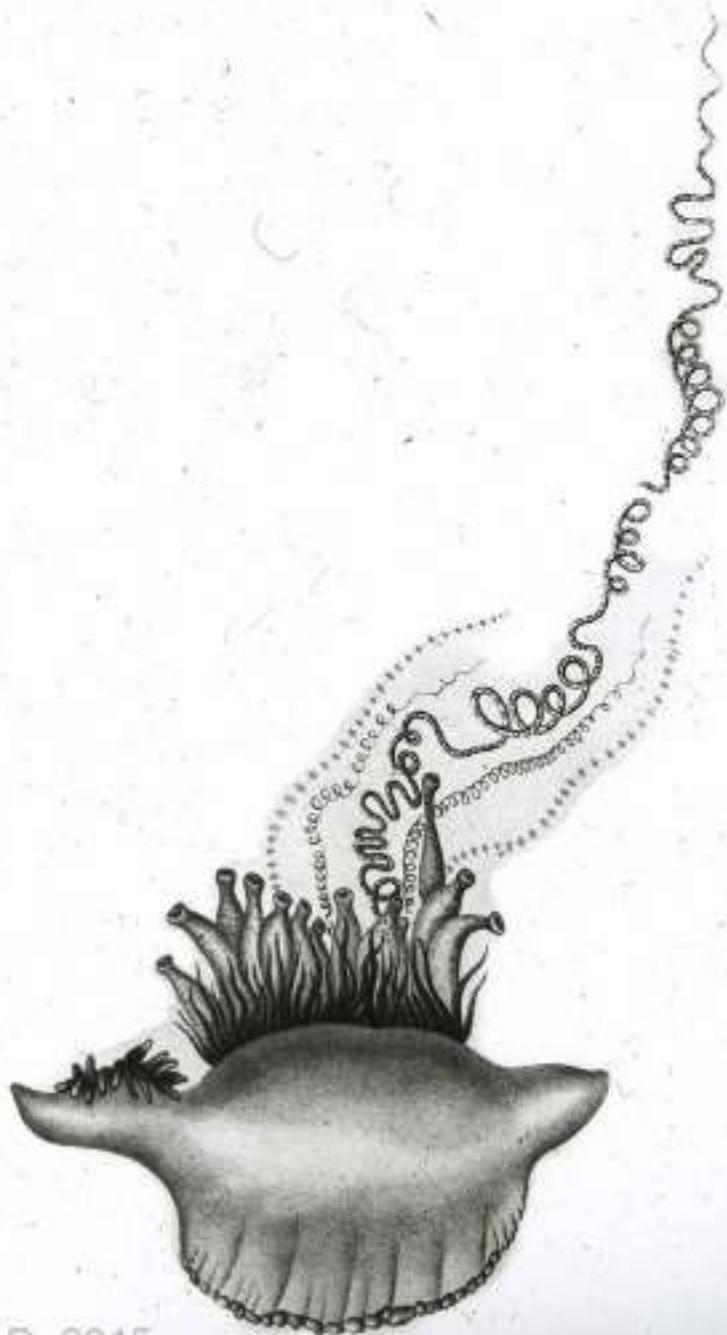


R.M.

S<sup>ie</sup> *g*  
N<sup>o</sup> *H*

*Amimora de port*





R M

Sle

N<sup>o</sup>

9-5-

Galvez