

(IV)

TROMPETA IIII

Orquesta Sinfónica de Madrid

Nim --- 52

FRANCESCA DA RIMINI



TSCHAIKOWSKY

Bo

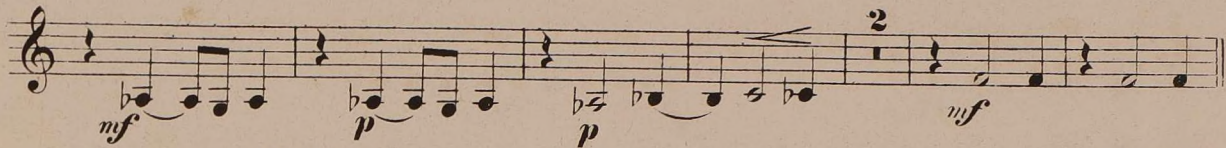
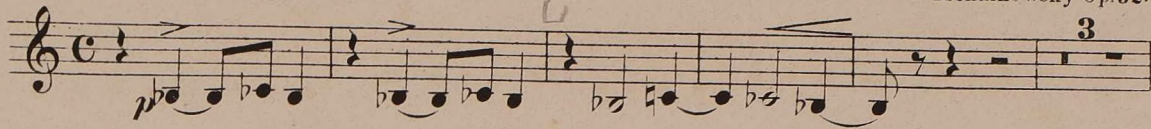
Tromba 2 IN E. FRANCESCA DA RIMINI.

FANTAISIE D'APRÈS DANTE

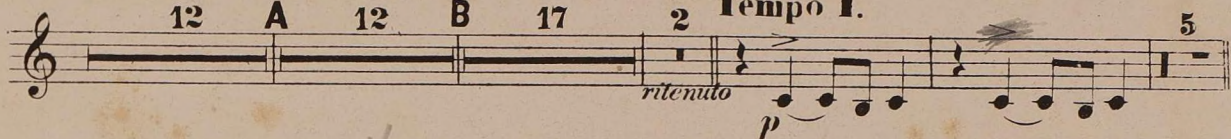


P. Tchaikowsky Op. 32.

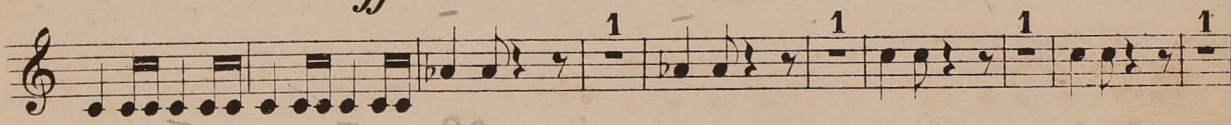
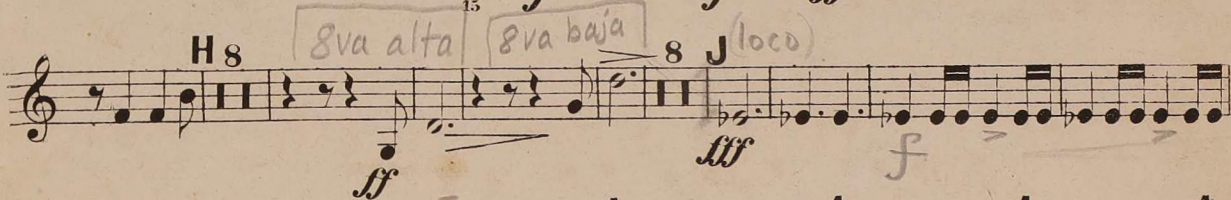
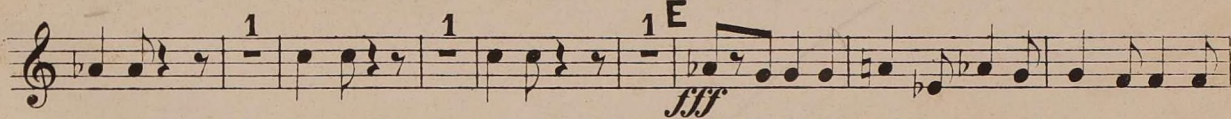
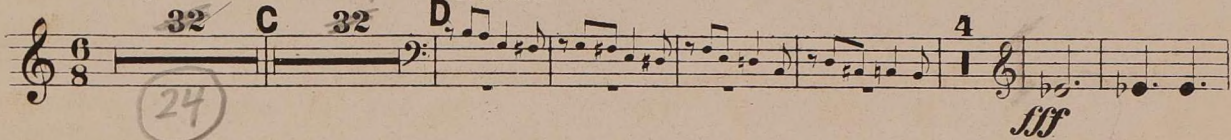
Andante lugubre.



Piu mosso. Moderato.



Allegro vivo.



Tromba 2 IN E.

1

K 4

L

ff mf cresc.

3

f mf cresc. f

2 1 1 1 1 M

p p

8 1

f mf p

Piston 29

ritenuto

Andante cantabile non troppo. Listesso tempo.

35 N 20 O 26 20 P 23 Q 6 R 7

Fl. y oboe subito p. trompa

ff

1 S

cant. fff

Emmit

3 3 3

meno f

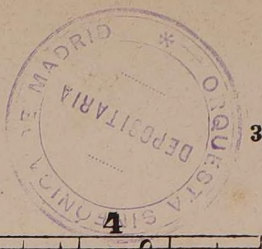
9

mf cresc.

Allegro vivace.

1 3

ff



Tromba 2 IN E:

Allegro vivo.

32 T 32 U Tromboni

24

8/8

24

4

fff

f

f

1

1

1

1 X

4

1

fff

mf

cresc.

f

mf

4

cresc.

f

2

1

1

Poco piu mosso.

1

1

1

7

8

f

ff

fff

(P)

1

ff

meno

1

rit

fff

Mib